

<b><i>Setup Bluetooth USB for Internet and Intranet Sharing</i></b> _____	<b>2</b>
<b>Hardware Installation</b> _____	<b>2</b>
<b>Software Installation and Configuration</b> _____	<b>2</b>
Windows 98, Windows 98SE and Windows ME _____	2
Server Configuration under Windows 98 and Windows ME _____	6
Windows 2000 and Windows XP _____	7
Server Configuration under Windows XP _____	11
<b>How to use Bluetooth Internet and Intranet Sharing</b> _____	<b>13</b>
Enable Security _____	13
Create the trusted pair of devices _____	15
Connect and disconnect Personnel Area Network _____	18
Important Note _____	18
<b><i>Setup the Bluetooth PC Card and USB for Bluetooth V.92 Modem</i></b> _____	<b>19</b>
<b>Installation of the driver and application software</b> _____	<b>19</b>
<b>Discover and Configure your Notebook or Desktop for Dial-up networking</b> _____	<b>19</b>
<b>Set up Dial-up networking to access ISP</b> _____	<b>23</b>

## **FEDERAL COMMUNICATIONS COMMISSION INTERFERENCE STATEMENT**

This equipment has been tested and found to comply with the limits for a Class B digital device, pursuant to Part 15 of the FCC Rules. These limits are designed to provide reasonable protection against harmful interference in a residential installation. This equipment generates, uses and can radiate radio frequency energy and, if not installed and used in accordance with the instructions, may cause harmful interference to radio communications. However, there is no guarantee that interference will not occur in a particular installation. If this equipment does cause harmful interference to radio or television reception, which can be determined by turning the equipment off and on, the user is encouraged to try to correct the interference by one or more of the following measures:

- Reorient or relocate the receiving antenna.
- Increase the separation between the equipment and receiver.
- Connect the equipment into an outlet on a circuit different from that to which the receiver is connected.
- Consult the dealer or an experienced radio/TV technician for help.

### **CAUTION:**

Any changes or modifications not expressly approved by the grantee of this device could void the user's authority to operate the equipment.

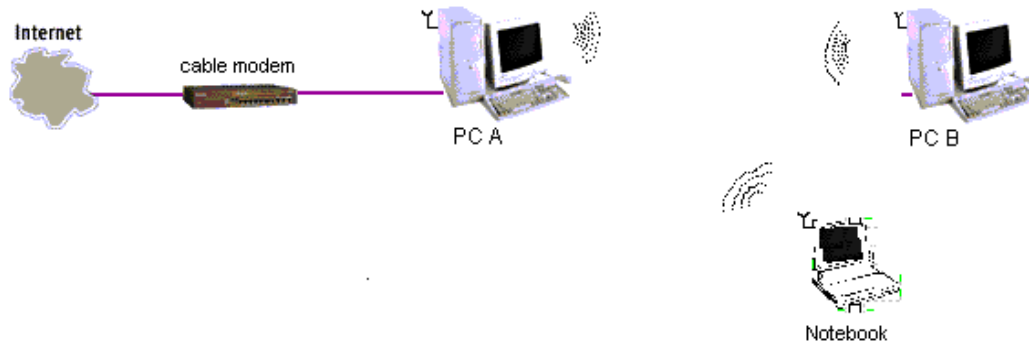
### **FCC RF Radiation Exposure Statement**

This equipment complies with FCC RF radiation exposure limits set forth for an uncontrolled environment. This equipment should be installed and operated with a minimum distance of 2.0cm between the radiator and your body.

## Setup Bluetooth USB for Internet and Intranet Sharing

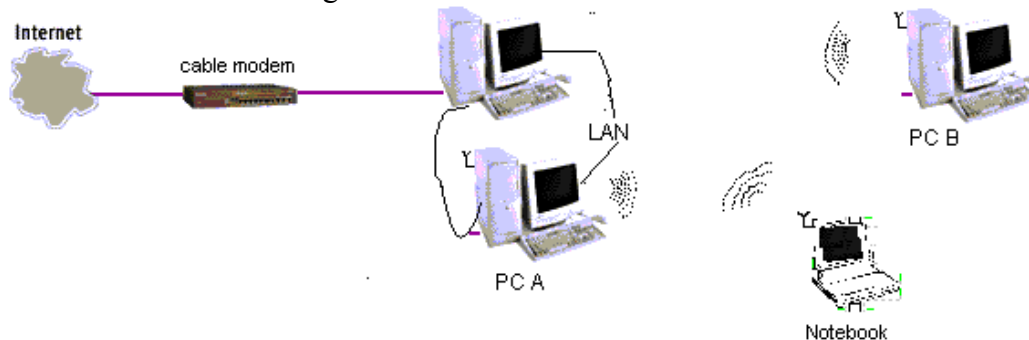
This section contains the guide for setting up the Broadband Internet Sharing with Bluetooth USB Dongles.

### Hardware Installation



#### Home Scenario

PC A is connected with cable or ADSL modem, and it is able to access the broadband from this PC. We called this PC as the server of BIS. PC A, PC B and notebook have installed our Bluetooth USB Dongle. PC B and notebook will communicate with PC A Via Bluetooth in order to gain the internet access and network resources.



#### Office Scenario

PC A can be one node that can access internet in the office environment. We called this PC as the server of BIS.

### Software Installation and Configuration

#### Windows 98, Windows 98SE and Windows ME

Once you insert the Bluetooth USB Dongle, the following dialog box appears.



Press “Next”, the following dialog box is shown on the screen.



Select “Search for the best driver for your device” and press “Next”

Select “Floppy disk drives”, if the driver of Bluetooth USB Dongle resides in floppy.  
Select “Specify a location” or CD-ROM, if it resides in other place.



Press "Next"

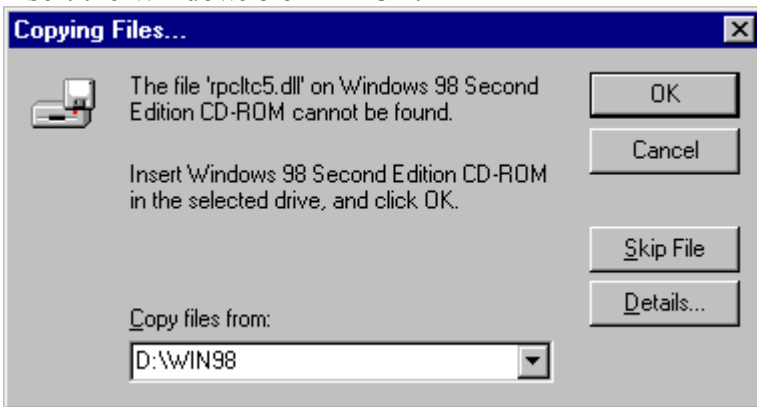


Press "Next" to continue

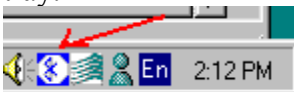


Press “Finish” to start enumeration of bluetooth device for profiles. If some systems prompt for reboot, please press “No” to let it continue enumeration.

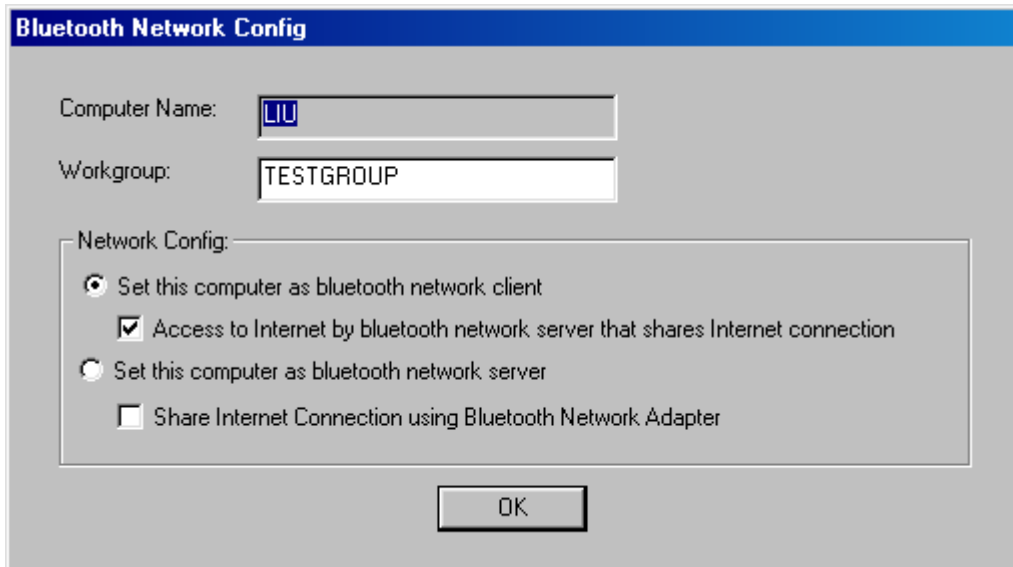
During the enumeration, Windows OS CD is needed for copy of system files. Please insert the Window98 or ME CD.



After finishing enumeration, you can see an icon with Bluetooth logo in the system tray.

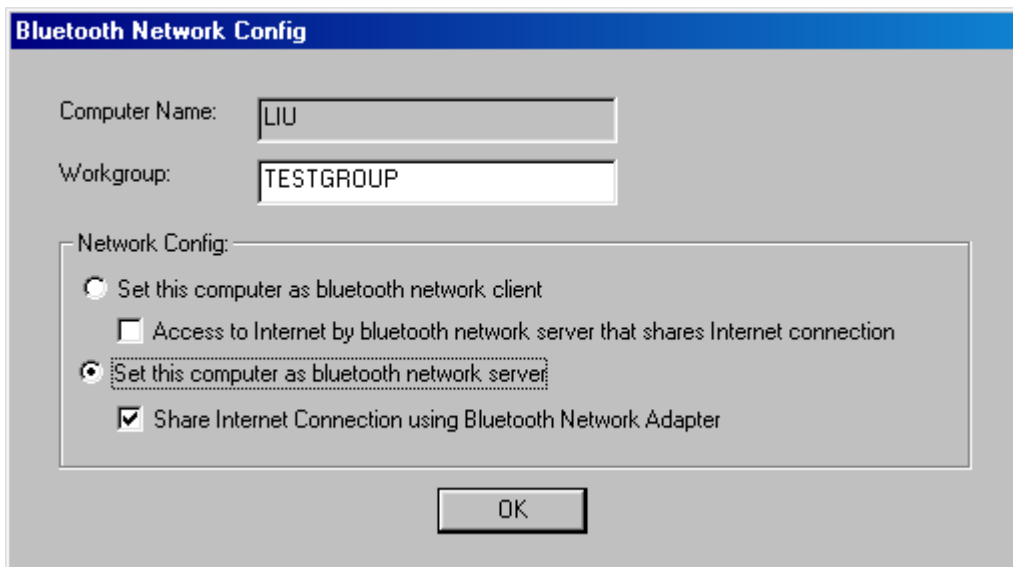


You may need to wait for around one minute under Window98, the following dialog box will appear:

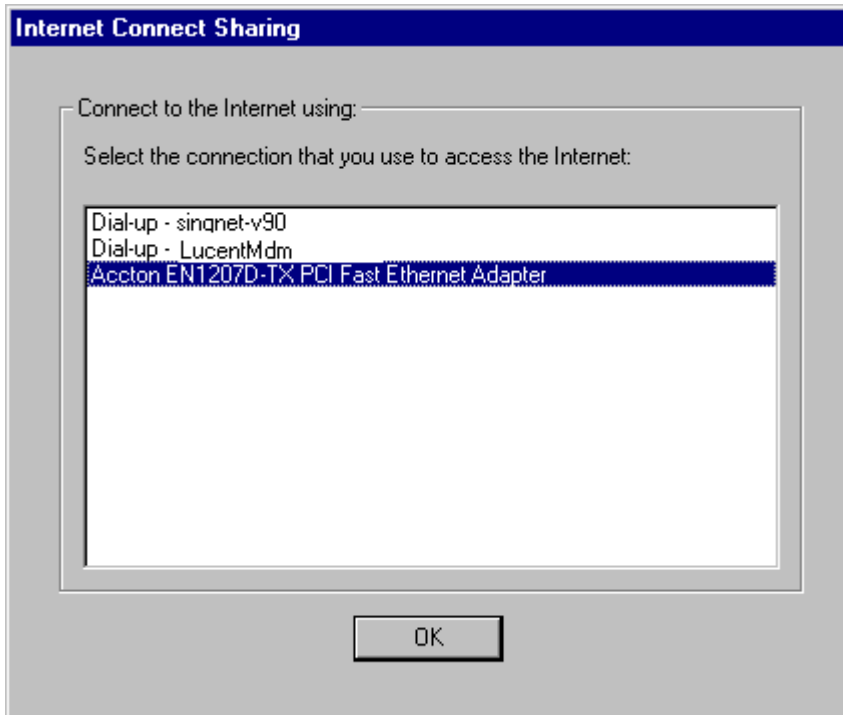


If you use this PC as bluetooth network client and access to internet via bluetooth network server, you can press “OK” to finish installation and configuration. If you use this PC as bluetooth network server and access point of internet sharing, you can continue the following section “Server Configuration”. The setting of Workgroup is read from your system, this dialog allows you to change the name of Workgroup. Please make sure that the client and server have the same Workgroup in order to share Folders and Printers.

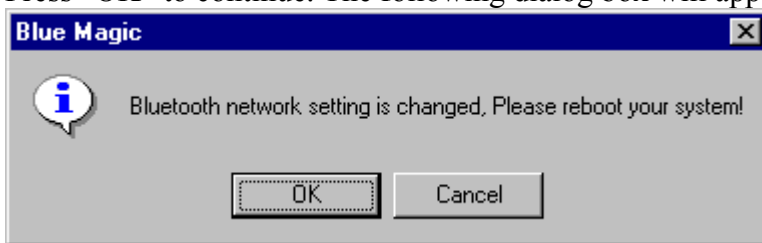
### Server Configuration under Windows 98 and Windows ME



Press “OK” to continue, the following dialog box will appear:



Please select your method to access internet. It can be Ethernet Adapter, if this PC is in office environment. It can also be dial-up Analog, ISDN, ADSL and Cable modem. Press “OK” to continue. The following dialog box will appear:



Please press “OK” to finish the bluetooth server installation

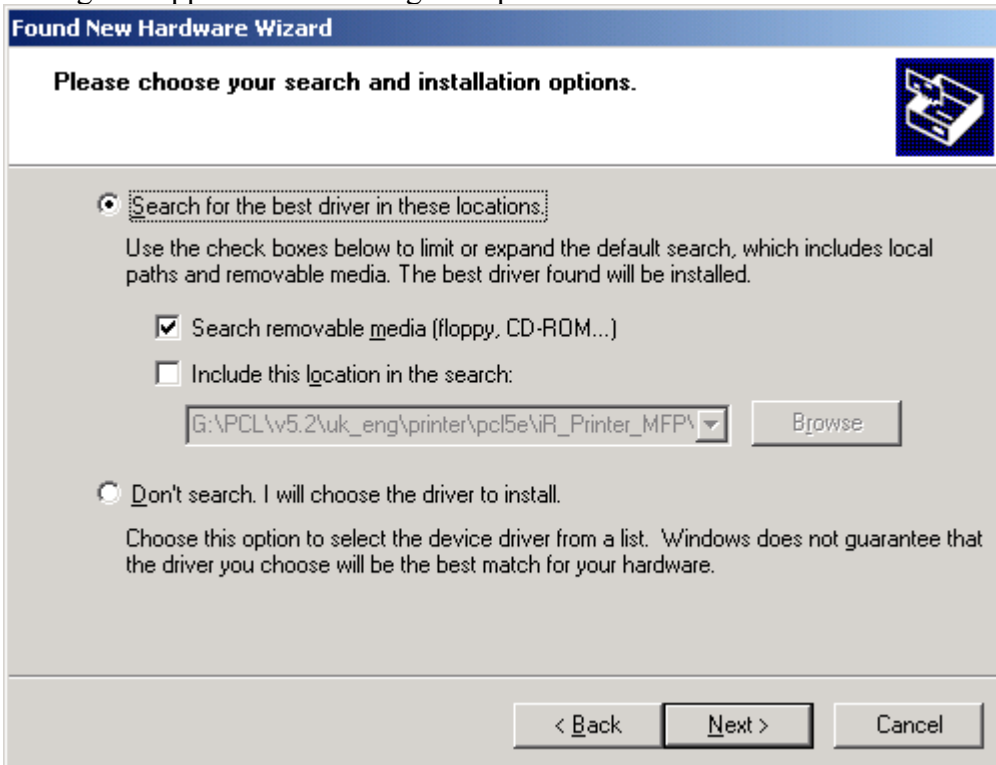
## **Windows 2000 and Windows XP**

Once you insert our Bluetooth USB Dongle, and the following dialog box appears. Please select “Install from a list or specific location (Advanced)”, and press “Next”

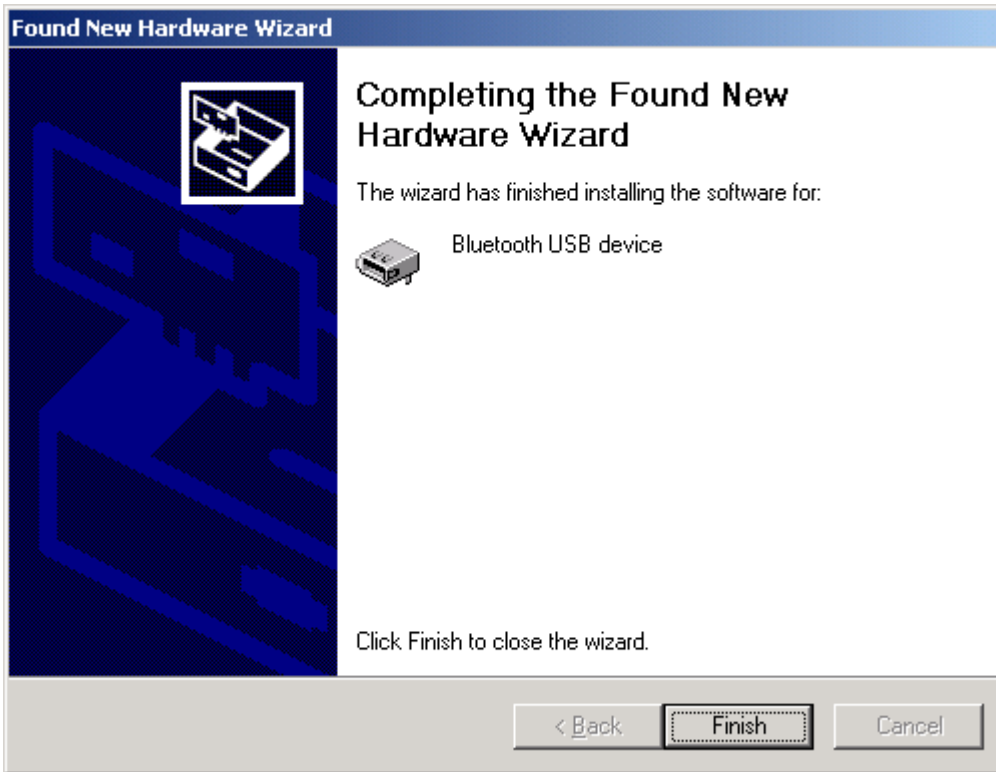




The dialog box appears as following after press “Next”:



Press “Next” to copy the files from CD-ROM to your PC. The following dialog box appears after finishing copy.



Press “Finish” to start enumeration of devices for the variety of application profiles. The first device is “USB Bluetooth port for Dial-up Networking Profile”, and the dialog box appears as below:



Press “Next” to continue, and the dialog box appears as below:

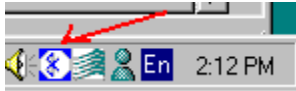


Press "Continue Anyway" to continue installation, and the dialog box appear as below:

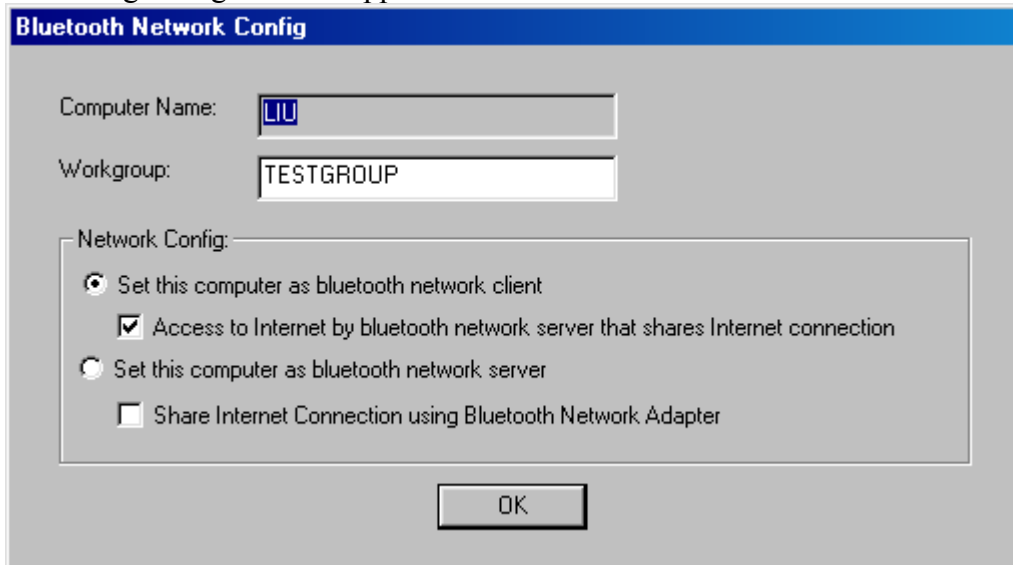


Press "Finish" to finish adding this application profile. Please follow the same method to add the rest.

After finishing enumeration, you can see an icon with Bluetooth logo in the system tray.



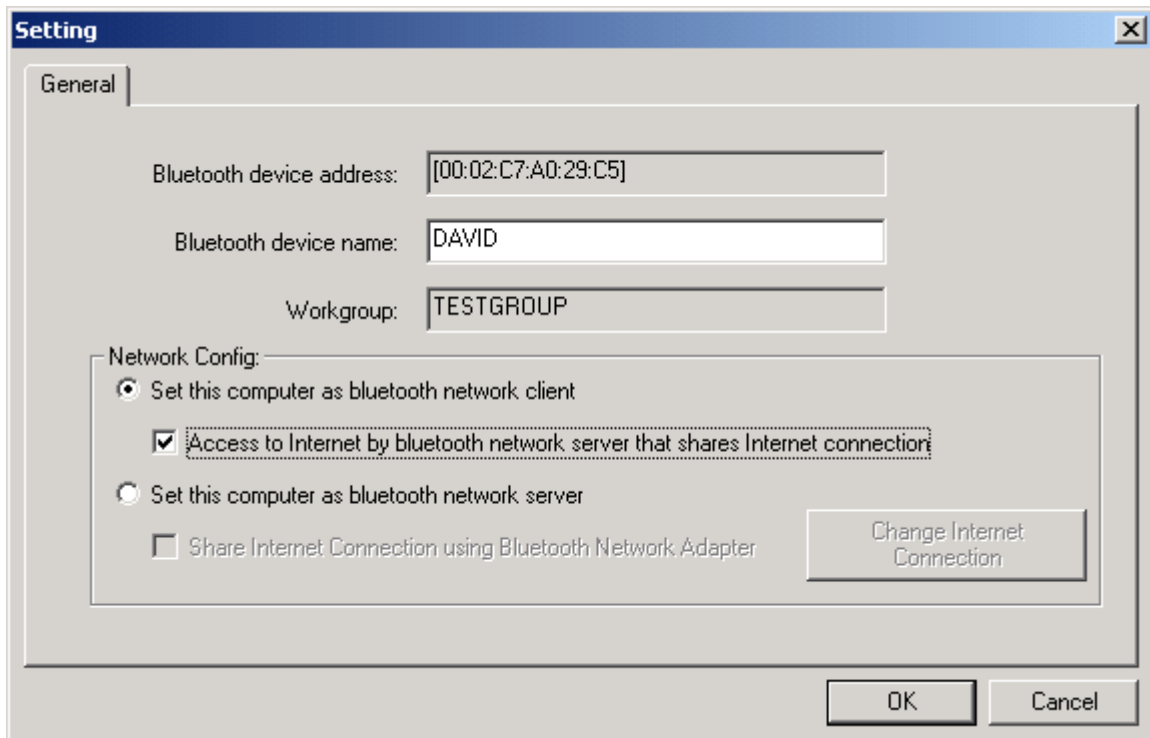
The following dialog box will appear:



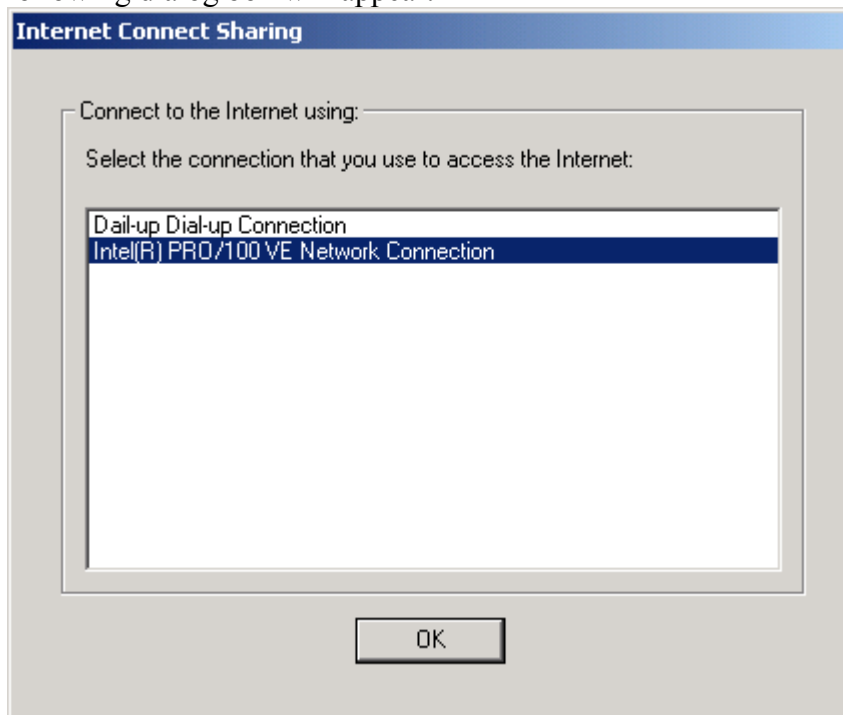
If you use this PC as bluetooth network client and access to internet via bluetooth network server, you can check “Access to Internet by bluetooth network server that shares Internet connection” and press “OK” to finish installation and configuration. If you use this PC as bluetooth network server and access point of internet sharing, you can continue the following section “Server Configuration”.

The setting of Workgroup is read from your system, this dialog allows you to change the name of Workgroup. Please make sure that the client and server have the same Workgroup in order to share Folders and Printers.

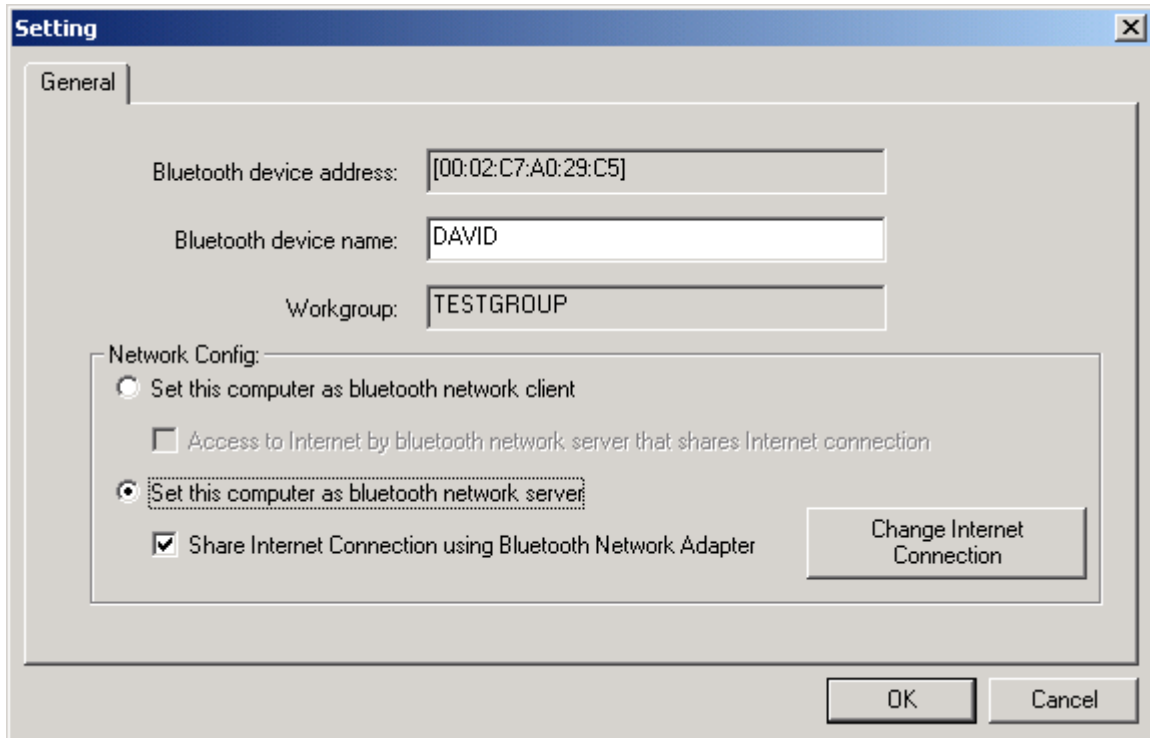
## **Server Configuration under Windows XP**



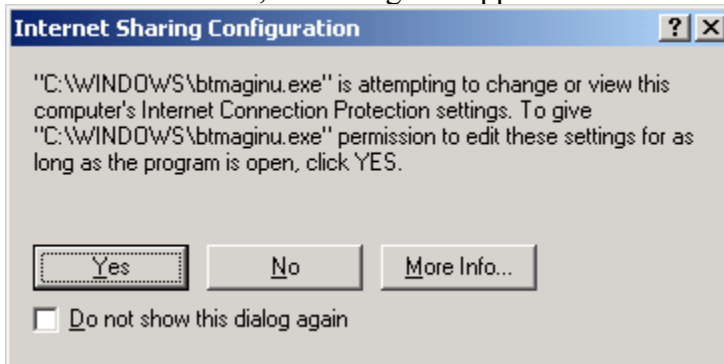
Select “Set this computer as bluetooth network server that shares Internet connection”, the following dialog box will appear:



Please select your method to access internet. It can be Ethernet Adapter, if this PC is in office environment. It can also be dial-up Analog, ISDN, ADSL and Cable modem. Press “OK” to continue. The following dialog box will appear:



Press “OK” to continue, the dialog box appears as below:



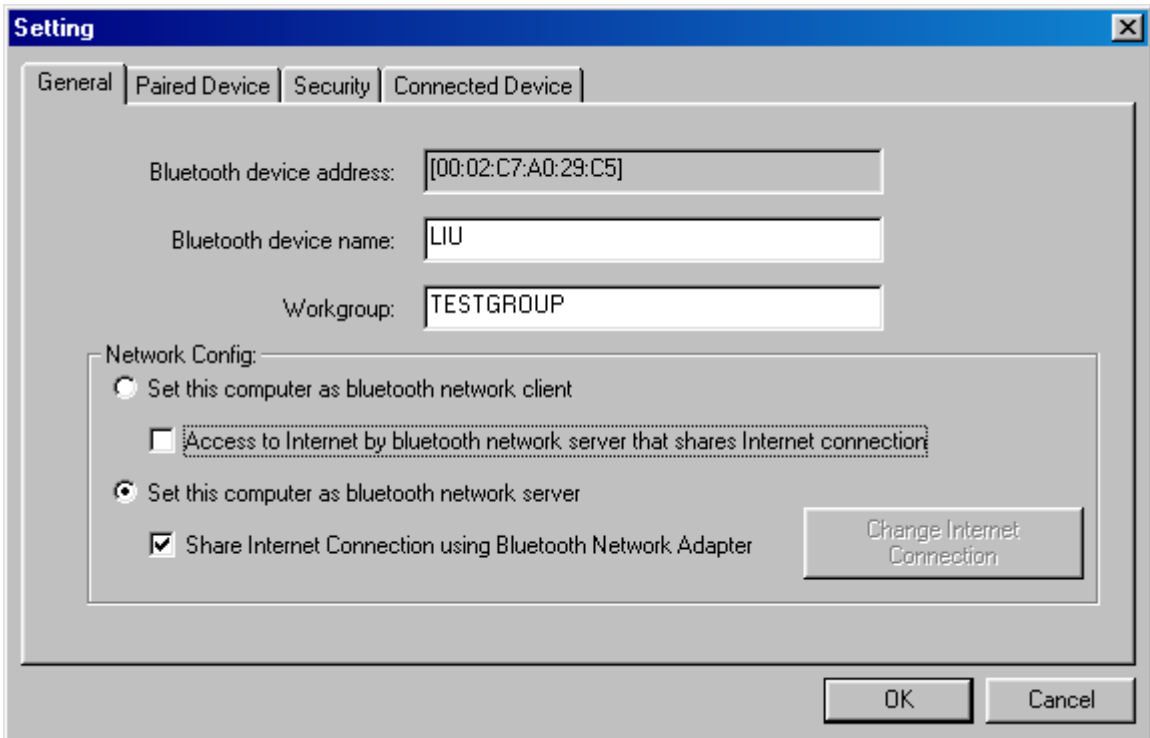
Press “Yes” to continue and reboot the system.

## ***How to use Bluetooth Internet and Intranet Sharing***

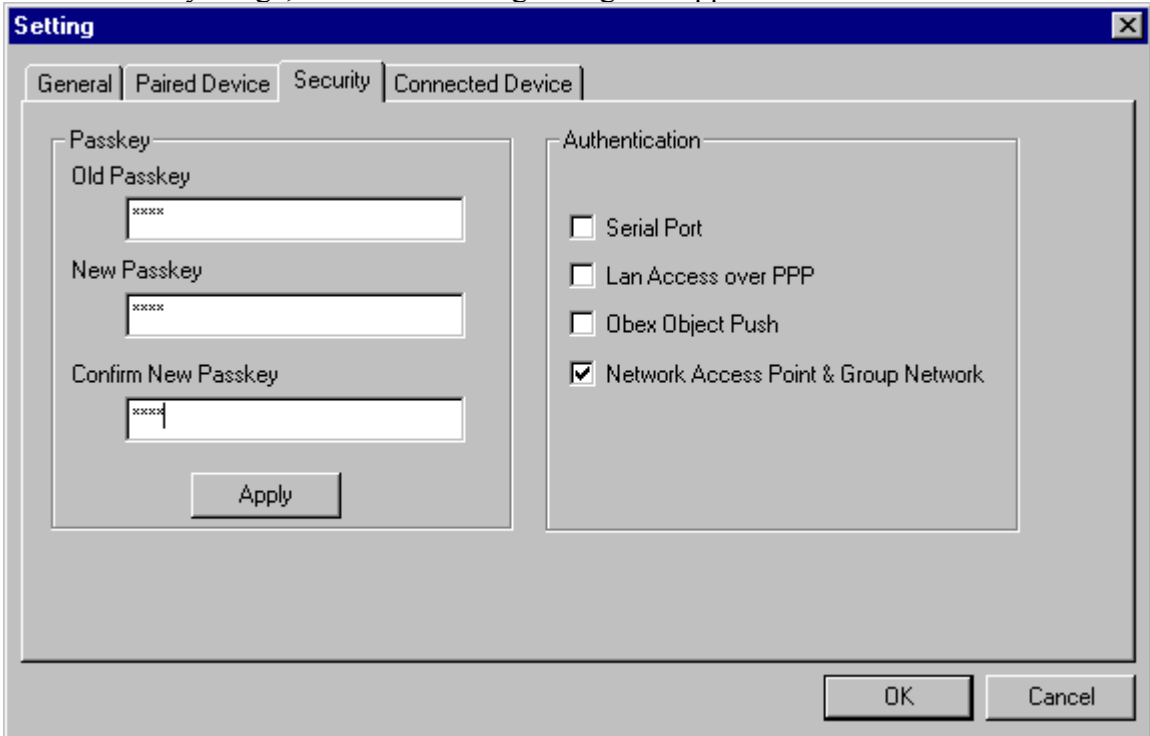
### **Enable Security**

User can select enable and disable security of Bluetooth Internet and Intranet Sharing. The default setting is disable. In order to enable security, please follow the steps below:

At the bluetooth server PC such PC A, right click this icon, and click “Setting” in the pop-up menu. The following dialog box appears:



Click “Security” Page, and the following dialog box appears:

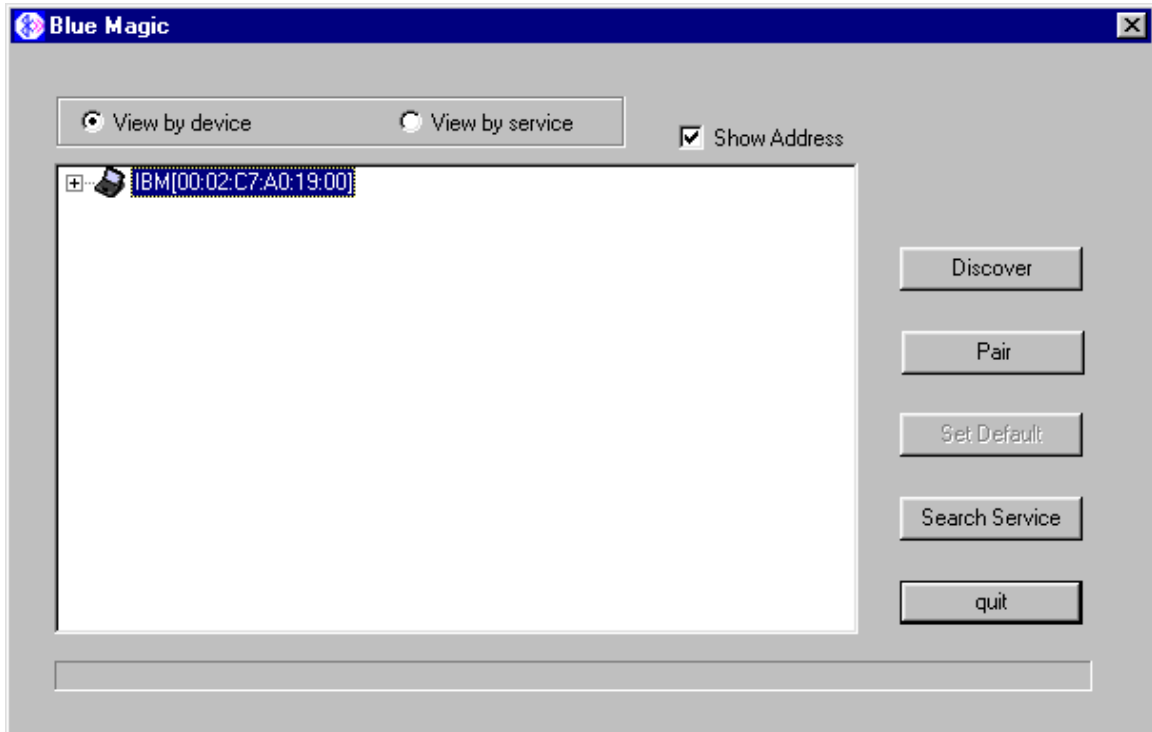


Under Authentication, user can select to enable the incoming authentication of Network Access Point by check this box. If user enables this option, they need to provide Passkey in the page for authentication. The client PC gains access to the server PC at the first time, user needs to pair the server PC with the same passkey.

**The old Passkey for PC Card and USB Dongle is 1234, and it allows user to change into the new one.**

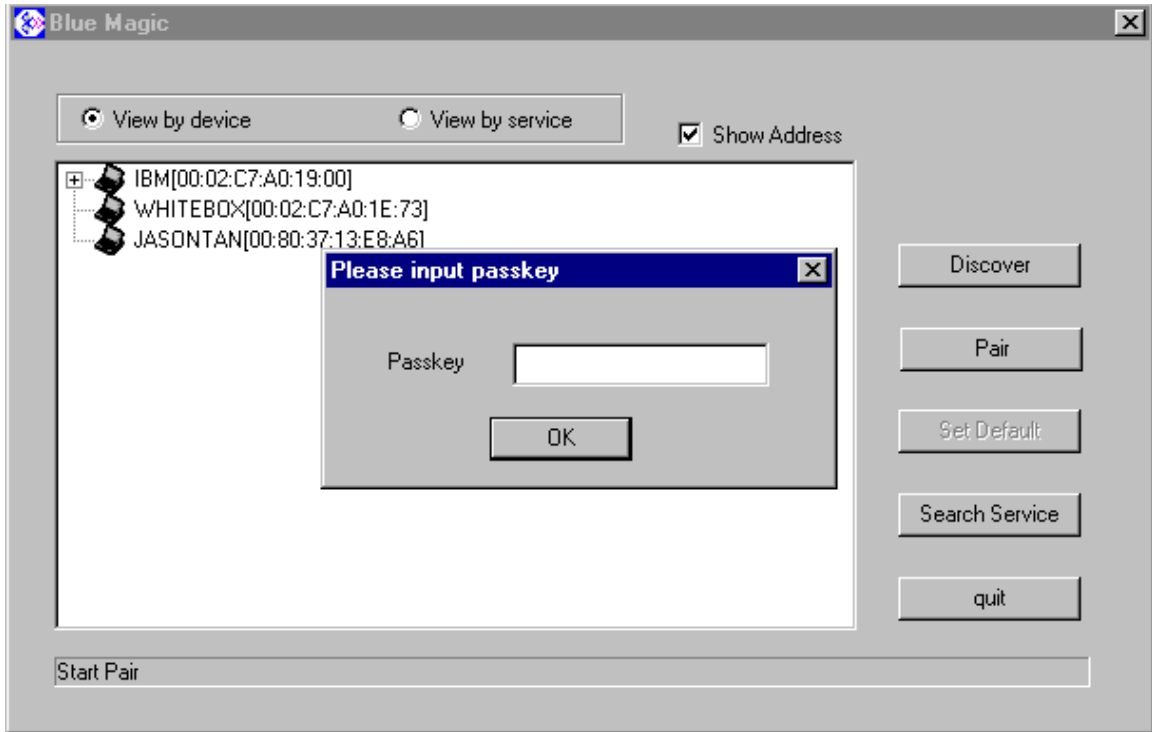
### **Create the trusted pair of devices**

At Bluetooth client PC such PC B right click this icon, right click the icon of Blue Magic in the system tray, and click “Open” in the pop-up menu. The following dialog appears.



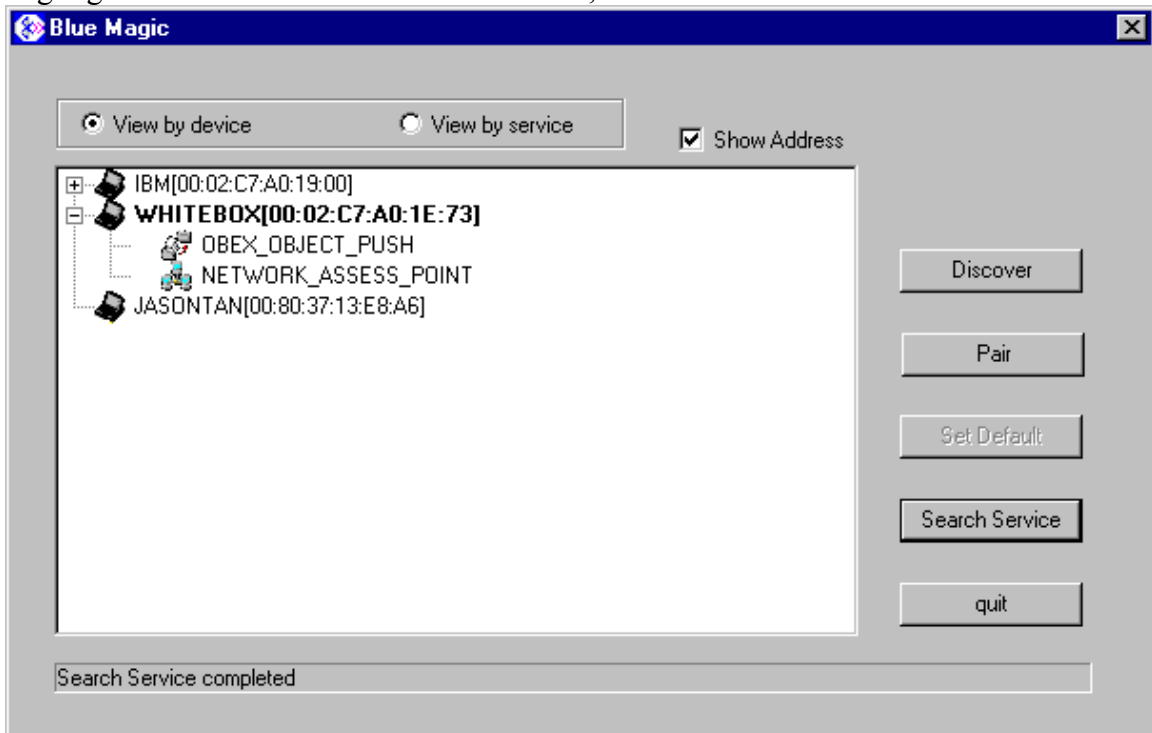
Click “Discover”, the client PC is discovering the bluetooth devices in the range. The devices are listed in the dialog box. Highlight the server PC, here is WHITEBOX. If the server PC needs authentication, click “Pair” to start pairing. If the server PC needs not authentication, skip pairing.



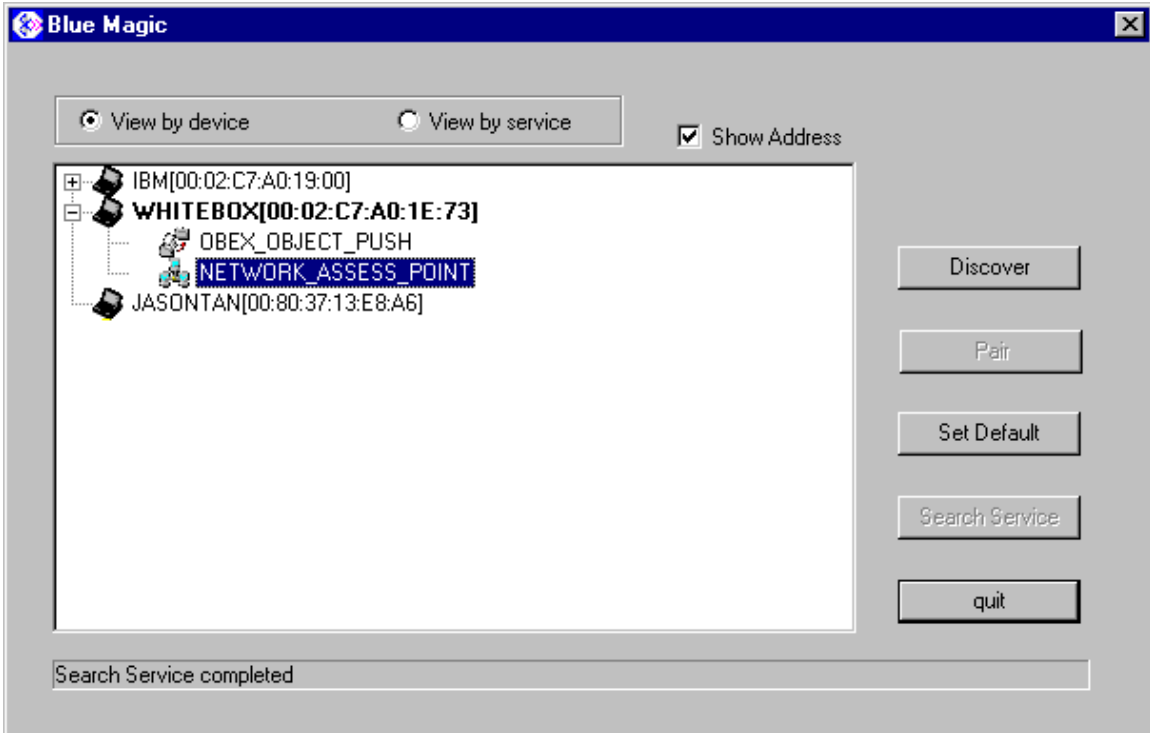


Key in the Passkey that has to be the same as the setting of server PC, otherwise the authentication fails.

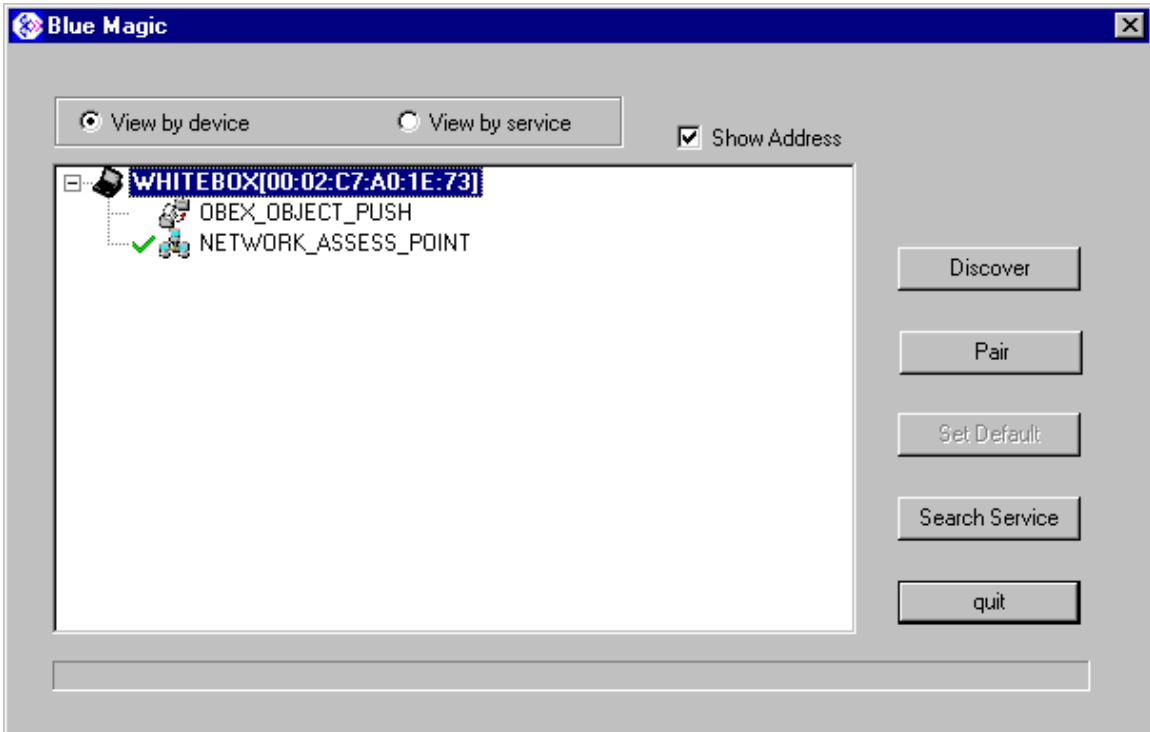
Highlight the server PC such as WHITEBOX, and click “Service Search”



Highlight “NETWORK\_ACCESS\_POINT”, the following dialog box appears:



Click “Set Default” to set this bluetooth device as Network Access Point.

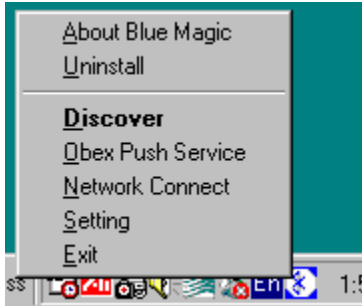


Exit this application. You have finished the setting of configuration.

Now you can right-click the icon of BlueMagic in the system tray, and click “Network Connect”. The bluetooth link between the server and client is connected. If the client PC installed NetBEUI, the shared directory and printers can be found in the

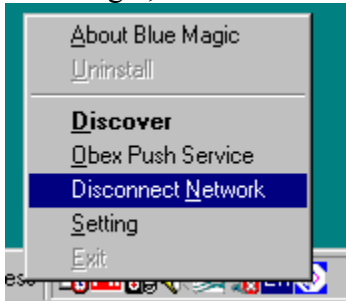
Network Neighborhood of the client PC. You can right-click the icon of BlueMagic in the system tray and click “Disconnect Network” to disconnect this link.  
In order to share the broadband access, you need to setup Internet Connection Sharing for Win98 SE.

## Connect and disconnect Personnel Area Network



Right-click the icon of BlueMagic, and click Network Connect from the client PC. The animation of icon shows whether the connection is active. After connection, you should be able to see each other from Network Neighborhood, if you has installed NetBIOS at both sides.

If you have finished your connection, you can disconnect it. Right-click the icon of BlueMagic, and click “Disconnect Network” from the client PC.



## Important Note

1. If you want to use this PC as Bluetooth Server, Window OS must be above Windows 98 Second Edition.

## Setup the Bluetooth PC Card and USB for Bluetooth V.92 Modem

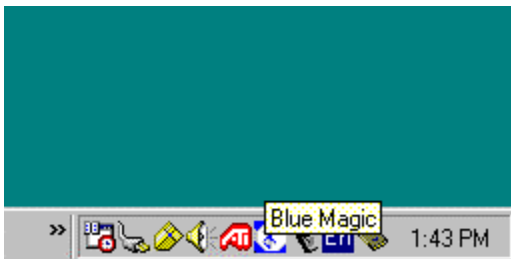
This section contains descriptions for setting up your Bluetooth PC Card and USB Dongle for accessing Bluetooth Modem Access Point.

### ***Installation of the driver and application software***

1. Insert the Bluetooth PC Card or USB dongle into notebook or desktop PC
2. Insert installation CD into your CD-ROM
3. Specify the driver location \DRIVER\WIN98+ME\PC\_Card or \USB
4. Follow the instruction to click “next” until finish.
5. Reboot machine

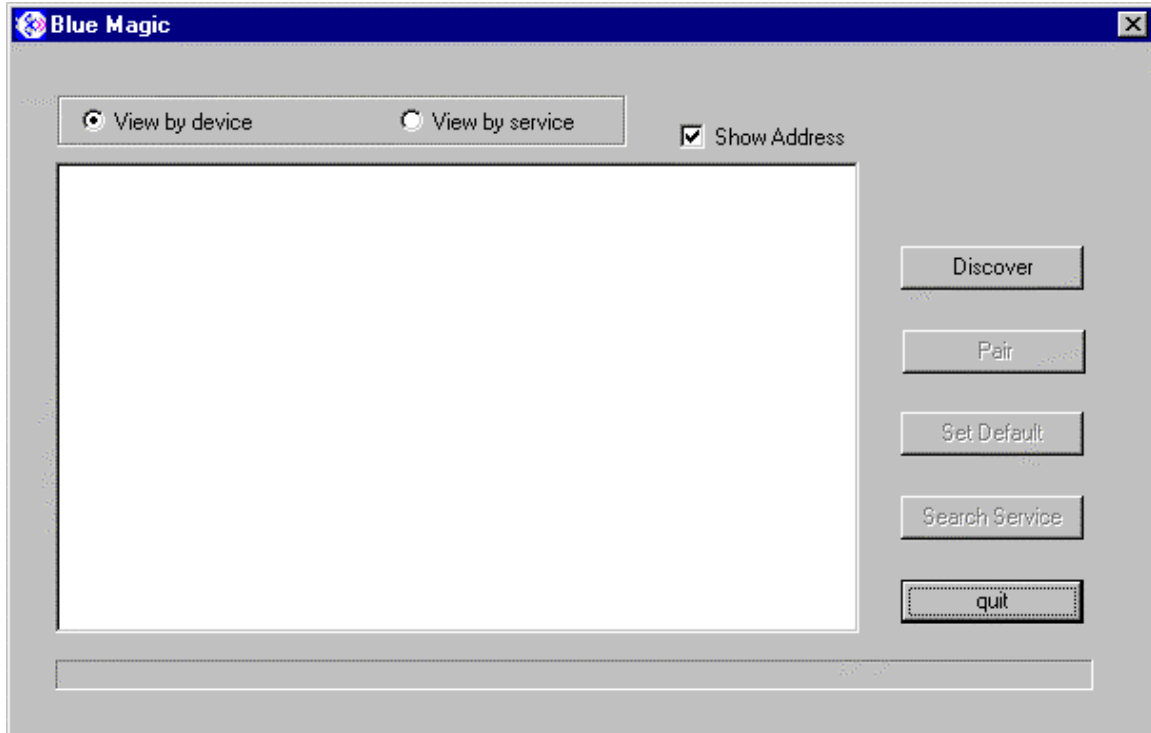
### ***Discover and Configure your Notebook or Desktop for Dial-up networking***

After you have installed Bluetooth PC Card or USB dongle, the BlueMagic icon appears in the tray of system toolbar. The icon has Bluetooth logo inside as shown in figure 1.



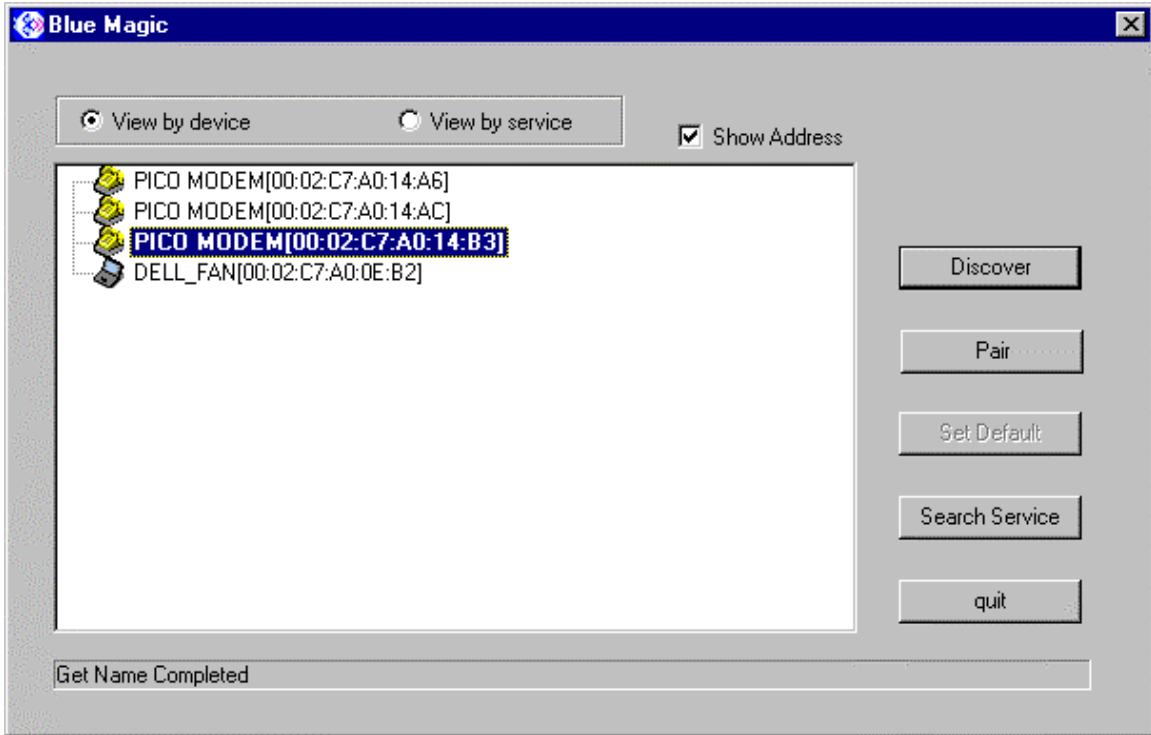
**figure 1**

1. Double click on BlueMagic icon, the dialog box appears as the figure 2

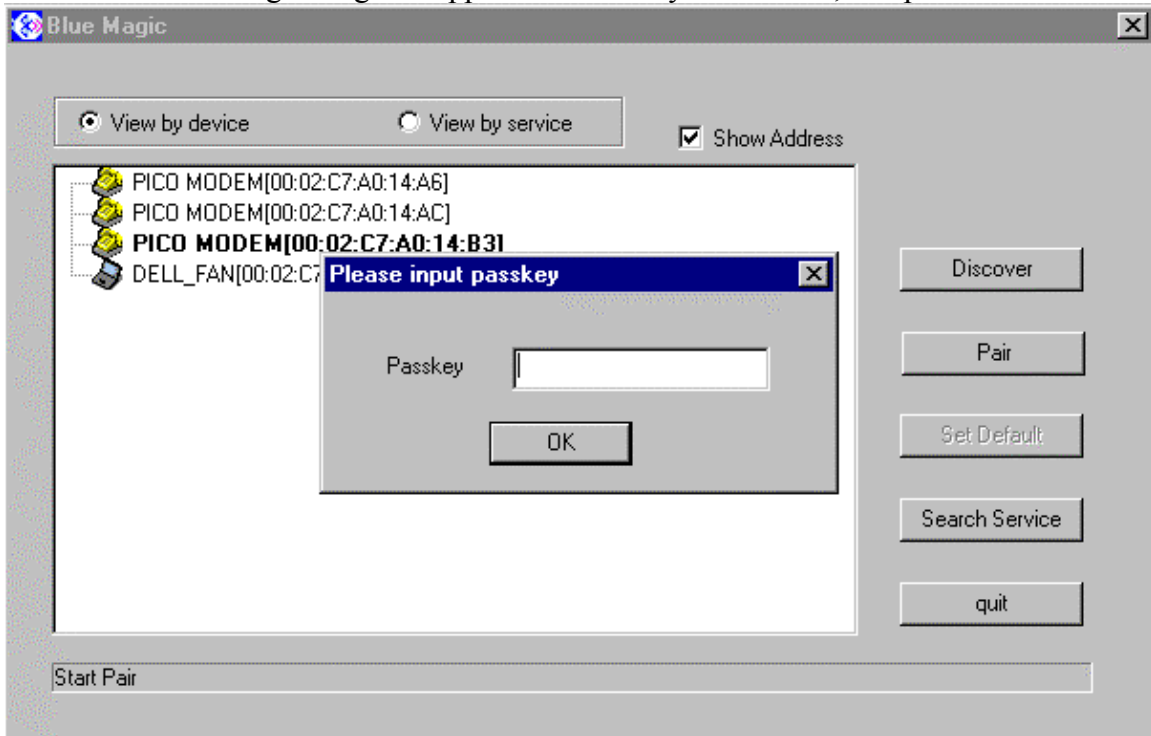


**Figure 2**

2. Turn on Bluetooth Modem access point with telephone line connecting to PSTN network.
3. Click “Discover” button. Your Notebook or Desktop will search for all bluetooth devices within range.
4. If the Bluetooth Modem access point is within range, it will be listed in the dialog box as PICO MODEM. Highlight the PICO MODEM then click “Pair”

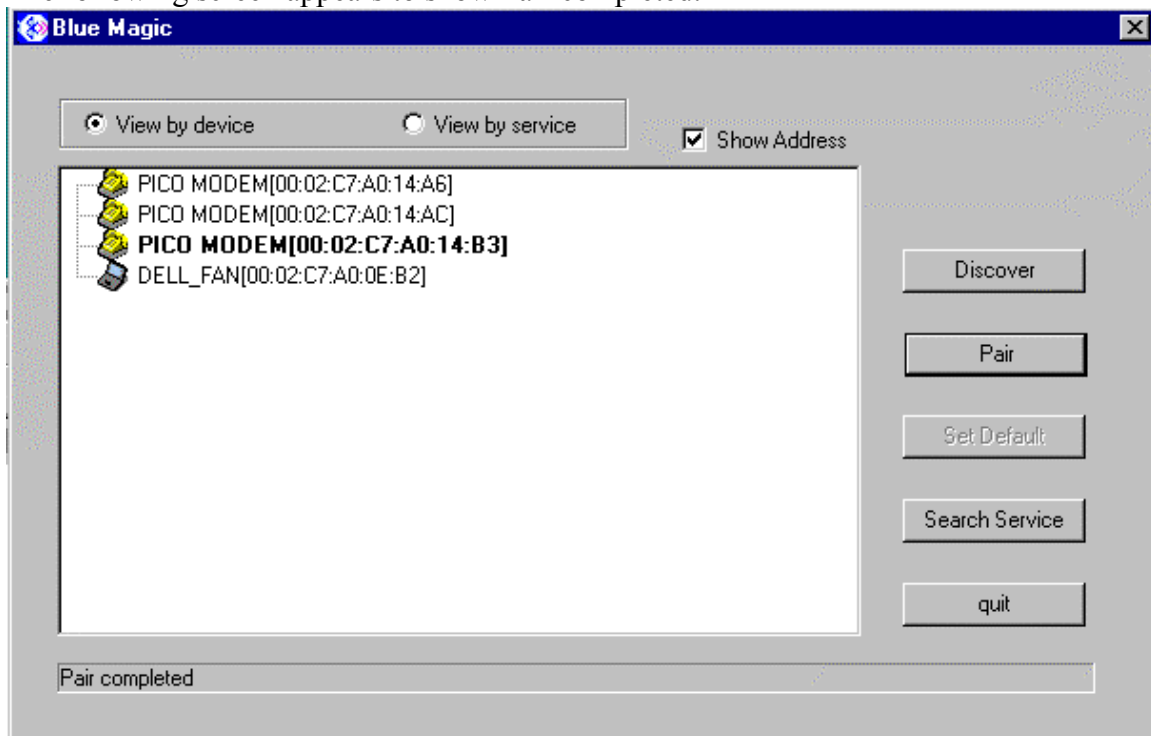


5. The following dialog box appears. Please key in “12345”, and press “OK”

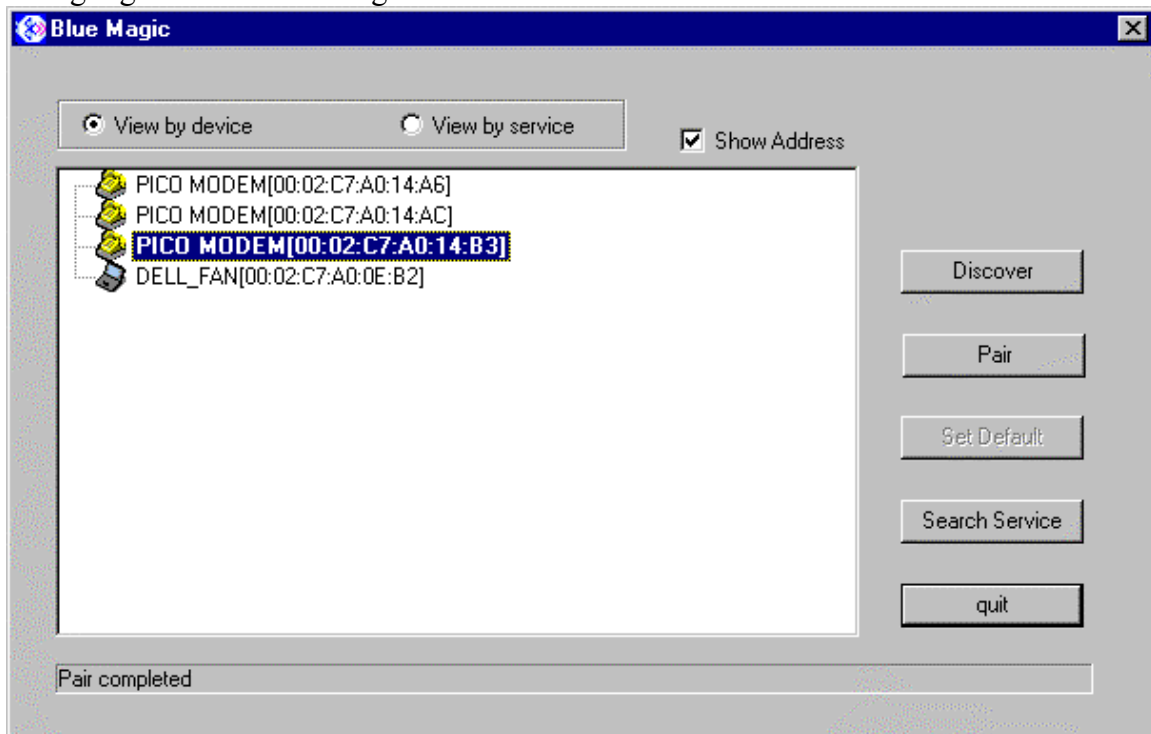


6. The pairing is complete when the PICO MODEM is highlighted in the dialog box. **The pairing has to be done within 5 minute after turning on of Bluetooth Wireless Modem.**

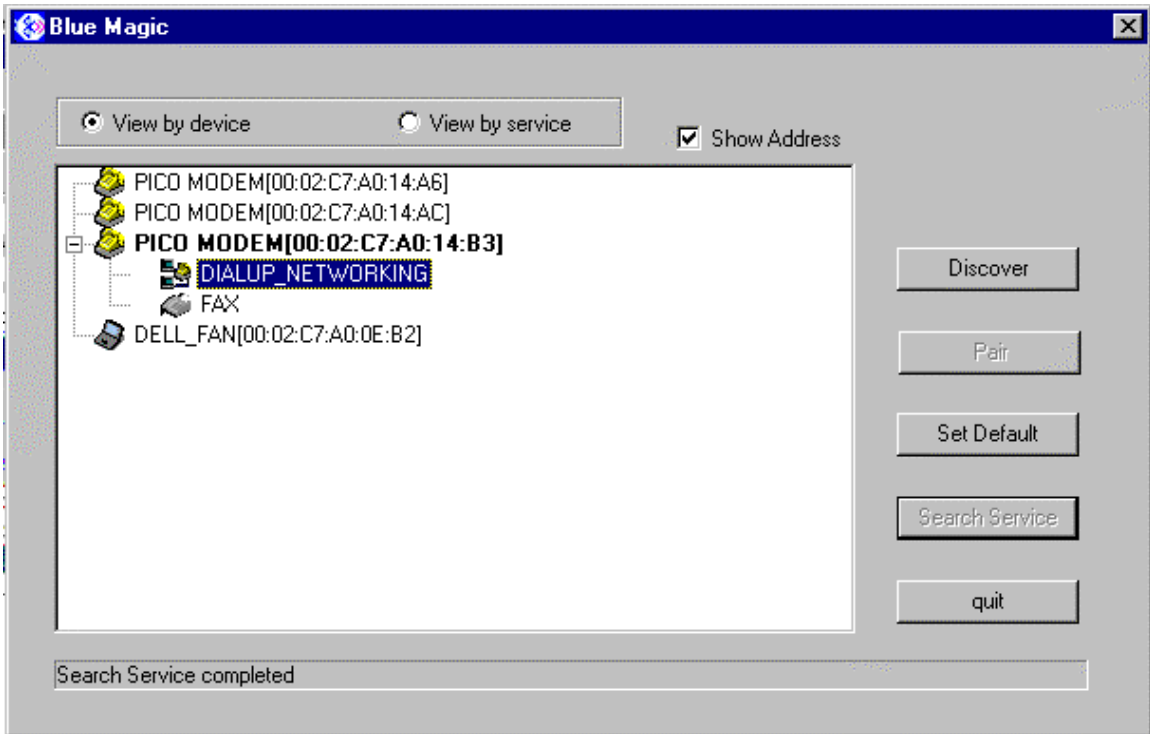
The following screen appears to show Pair completed.



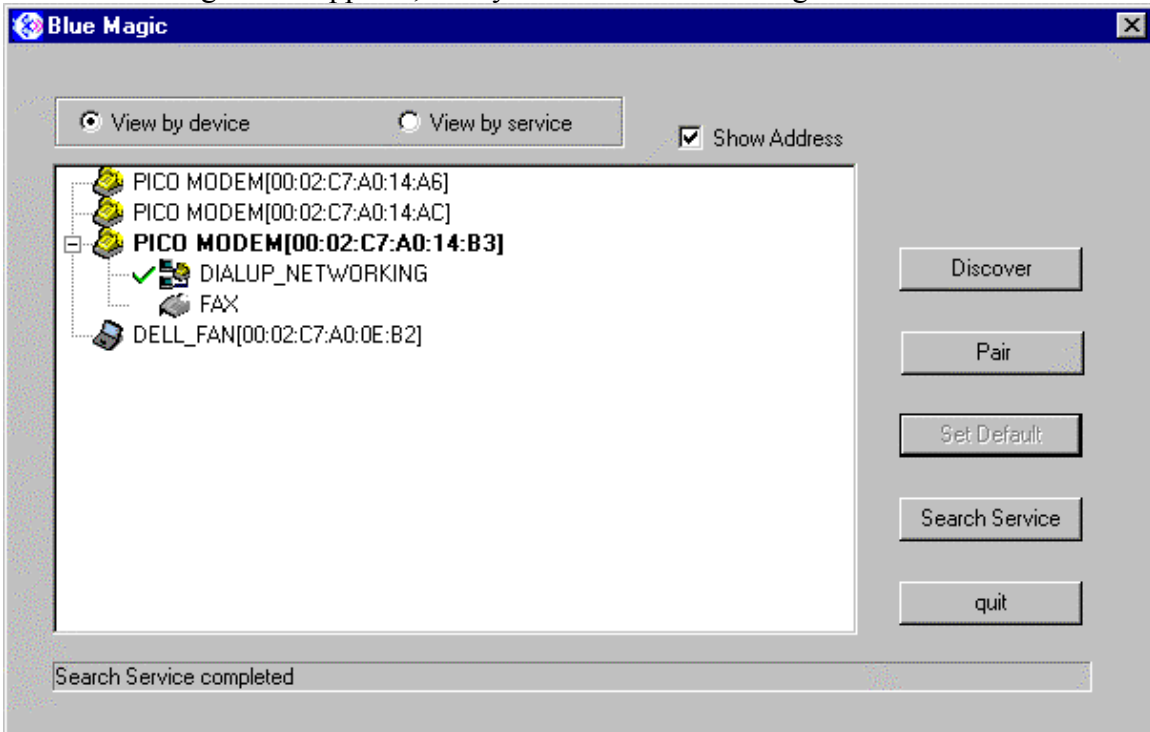
7. Highlight PICO Modem again and Press “Search Service” Button



8. Highlight “Dial-up Network” under “PICO MODEM”, and press “Set Default” in order to set this Bluetooth Dial-up network as the default adapter.



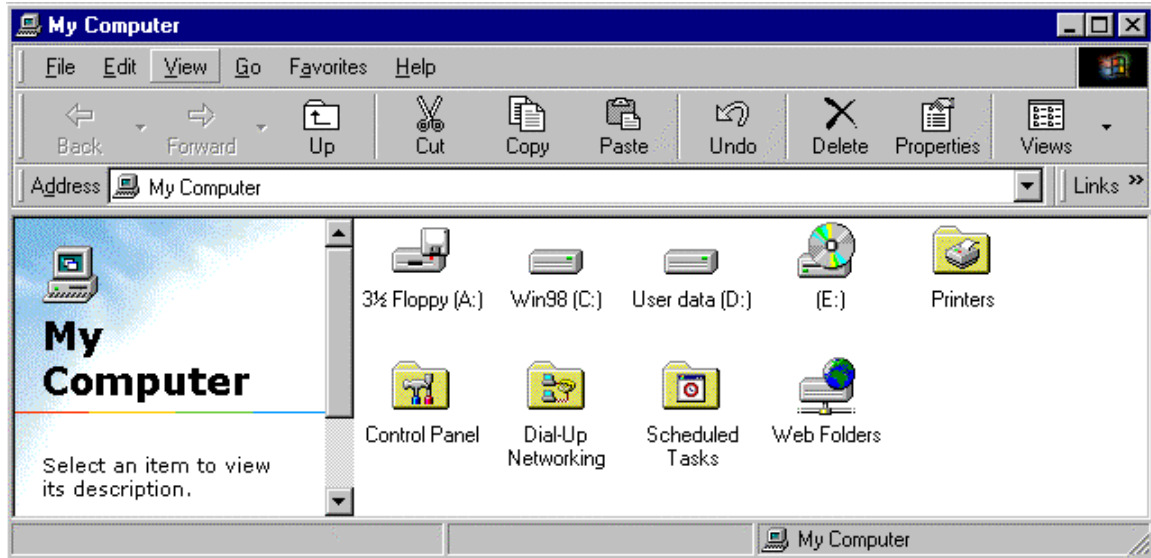
9. The following screen appears, now you can close this dialog box



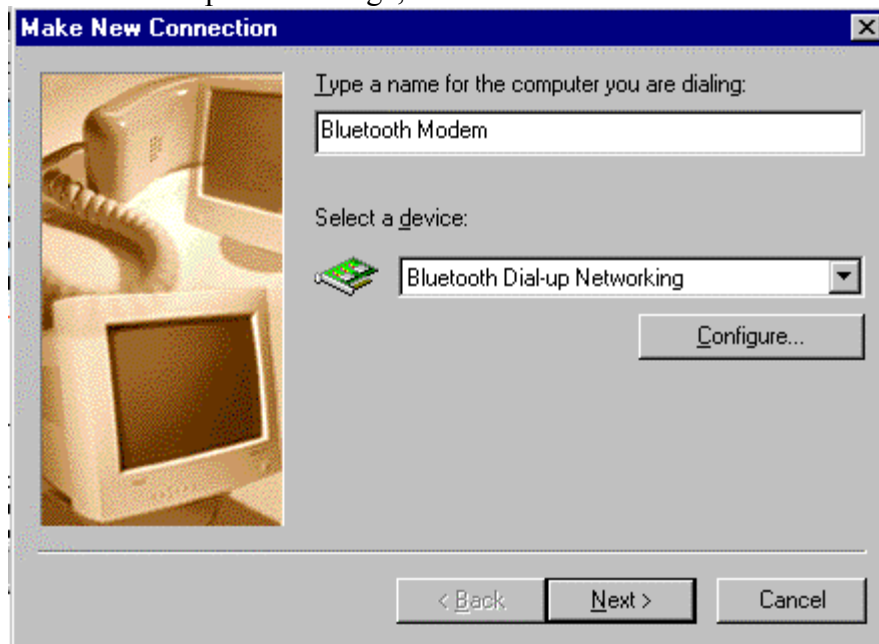
## ***Set up Dial-up networking to access ISP***

1. Click "My Computer"

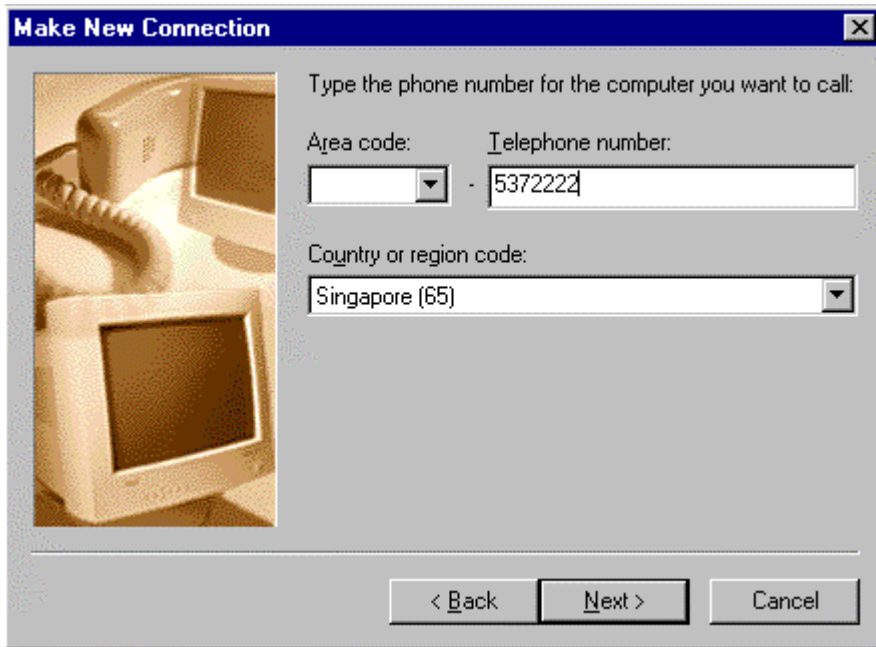




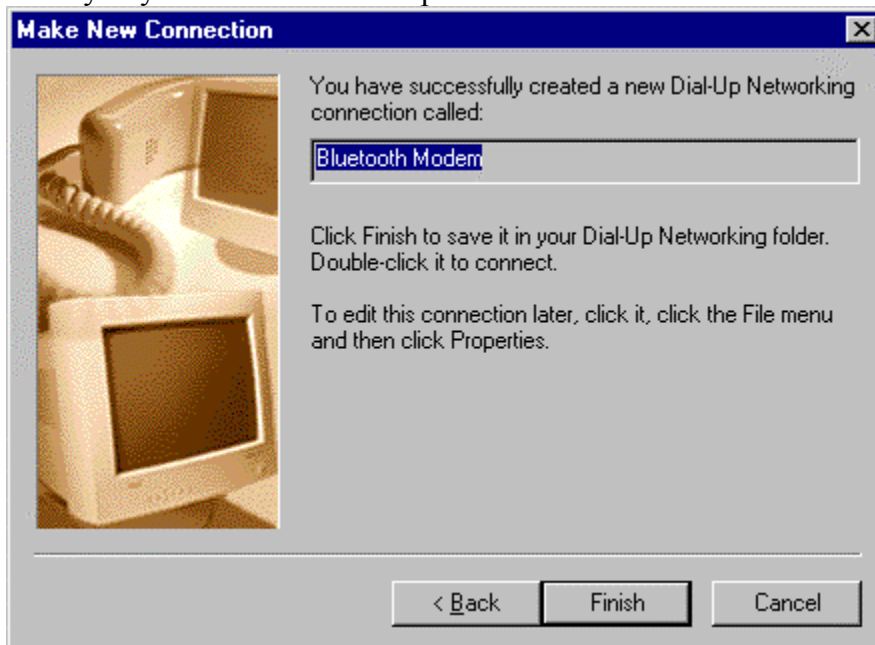
2. Click “Dial-up Networking”, then click “Make New Connection”



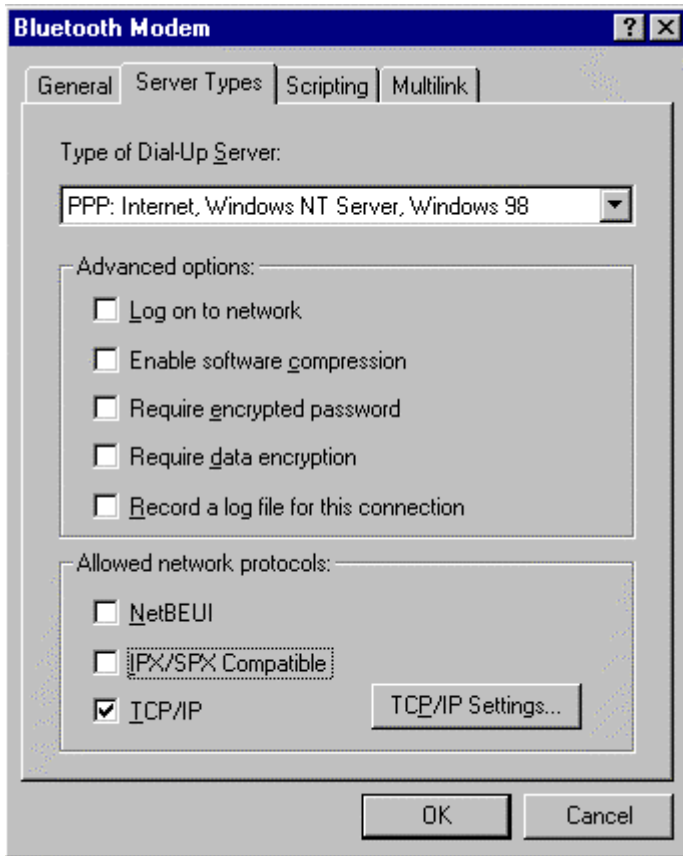
3. Select “Bluetooth Dial-up Network” for PC Card or “Bluetooth USB Dial-up Networking” for USB Dongle, then press “Next”



4. Key in your ISP number and press “Next”



5. Press “Finish” to complete adding dial-up networking via the default adapter.
6. Right click this dial-up networking, and choose “Properties”, and configure Server Type as the following



Congratulations on your successful installation. From now on, you can use Bluetooth Modem just as normal dial-up Modems and enjoy the freedom of wireless.

