



Instruction Manual



Slim-Art

ExcelView TFT-LCD Monitor

Slim-Art

ExcelView TFT-LCD Monitor
www.excelpoint.com

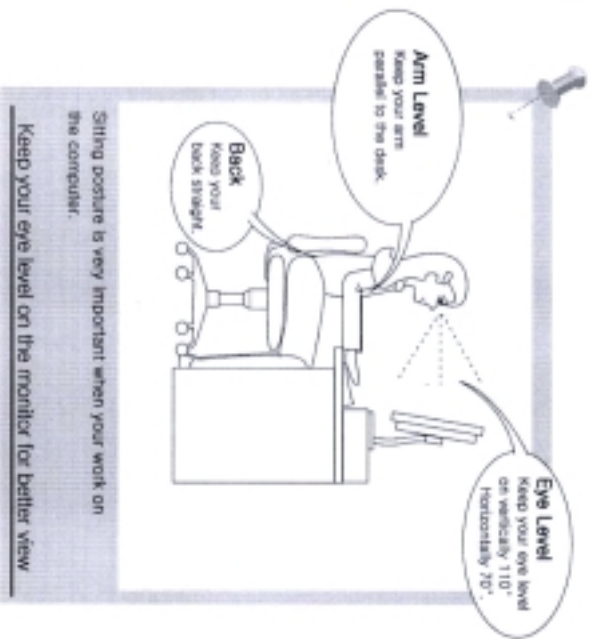


EXCELPOINT SYSTEMS (PTE) LTD

BLK 212, HOUGANG ST 21
#03-319, SINGAPORE 530212
TEL : 285-9890
FAX : 285-4813



Sitting Posture



Package Contents

Make sure the following items are included. If any items are missing, please contact dealer.



Table of contents

Before use	Safety Instruction Introduction	1 2
Connection	Cable Connection	3
Installation	Monitor Driver Installation For [Windows 95/98/ME] For [Windows 2000]	4 5 6
	Screen control main/menu Picture (brightness, contrast, h position, v position, phase, frequency)	7 8
	Advanced (Sharpness, color temp., Red, Green, Blue)	9
OSD(On Screen Display)	OSD (OSD timeout, OSD position, OSD h position, OSD v position)	10
	Option (factory reset, language, display mode)	11
	Auto adjustment	11
	Troubleshooting	12,13
	Specification	14
Others	Supported Video Mode	15
	Power-saving mode	15
	User information	16



SAFETY INSTRUCTION

Do not use LCD monitor if the power cord or outlet has been damaged.



Make sure to hold the plug, not the cord. Do not hold the plug with your hands wet.



Do not force to bend the cord or cut any heavy materials on the cord.



Do not put over load on the outlet.



Unplug the monitor when not in use to prevent damages caused by lightning.



Using the wetter and clean the front panel with dry cloth. Do not use ketone-type materials, ethyl alcohol, toluene, ethyl acid, methyl, or chloride.



Clean the plug with dry cloth.



Do not open the case of the monitor. Only a qualified technician may handle the monitor. CONTACT SERVICE CENTER for help.



If there are any unusual sounds or smells coming from the monitor, please contact service center immediately.



Introduction

★ EV150V1



Speaker

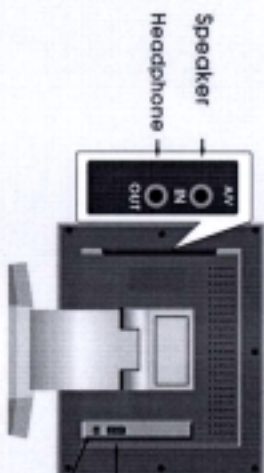
MENU
SELECT



Power LED

Button

★ EV150V1

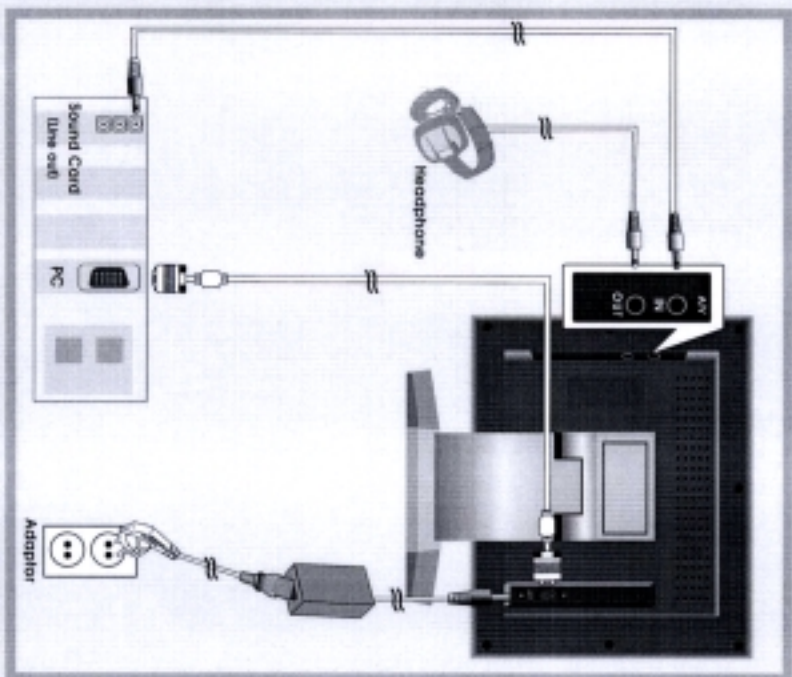


Speaker
Headphone

RGB Input
(D-SUB)
12V DC

■ Connection

Cable connection

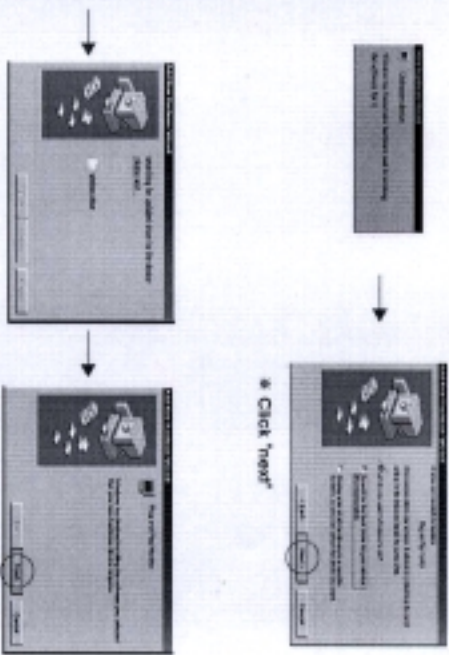


■ Installation

Monitor Driver Installation

■ Automatic Installation

1. On windows 95 / 98 / ME , this monitor can identify and configure itself automatically by Plug & Play function.
2. Install as follows (Install as Plug & Play)



■ When you install the driver, you can work on a better view because the resolution and frequency is set to suit to the monitor.

■ Installation ■

Monitor Driver Installation

■ Installation ■

Monitor Driver Installation

■ Monitor Driver Installation

■ For [Windows 95 / 98 / ME]

1. Insert the installation disk into the floppy drive.
2. Double click on "Install.exe"



■ Choose "ExciteView Smart! EV150V1" and click "OK"



■ Click "OK"



■ Click "Yes"

■ Windows has finished installing the ExciteView Smart! EV150V1 Monitor Driver

■ For [Windows 2000]

1. Insert the installation disk into the floppy drive.
2. Double click on "Install.exe"



■ Click "ExciteView Smart! EV150V1" and click "OK"



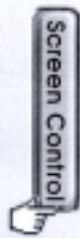
■ Click "OK"



■ Click "Yes"

■ Windows has finished installing the ExciteView Smart! EV150V1 Monitor Driver

■ Screen Control ■



※ Numerical Values may vary upon screen sized value.

(Main OSD)

OSD(On Screen Display) control sequence



1. Press button to display the main OSD menu.
 2. Press / button to select icon.
 3. Press button when the selected icon is highlighted for sub-menu.
 4. When sub-menu is deployed, Press / button to select desired menu.
 5. Press button when the selected icon is highlighted.
 6. Press / button to make necessary adjustment.
 7. Press button 3 times to save and return to the main menu.
- ※ Press for previous menu.

■ Screen Control ■



1. brightness 50
 - Control brightness of the screen
 - Decrease brightness
 - Increase brightness
2. contrast 50
 - Control contrast of the screen
 - Decrease contrast
 - Increase contrast
3. h position 50
 - Move screen left or right
 - Move left
 - Move right
4. v position 50
 - Move screen up or down
 - Move down
 - Move up.
5. phase 50
 - Control phase control value
 - Lower phase value
 - Higher phase value
6. frequency 50
 - Control frequency value
 - Lower frequency value
 - Higher frequency value

■ Screen Control ■



■ Screen Control ■

A sharpness 4 ▶

1. sharpness

Adjust the sharpness of the display. Higher number indicates sharper image. (controlled by)

A color temp 6500 ▶

2. color temp

Change the color by color temperature.

[6000] redish
[6500] light redish
[7000] light bluish
[user] user customizable

※ By selecting [user] mode , you can control [red] [green] [blue] control.
Other than [user] mode , you are not able use [red] [green] [blue] control.

A user red 50 ▶

A user green 50 ▶

A user blue 50 ▶

3. [user red] [user green] [user blue]

user can control the color.

C osd timeout 30 ▶

1. osd timeout

OSD duration
OSD will remain visible before disappearing
You can set from 5 to 100 seconds by buttons

C osd position ▶

2. osd position

You can choose 6 menu positions by buttons

C osd h position 50 ▶

3. osd h position

Move the OSD window to the horizontal direction

OSD window moves to the left
 OSD window moves to the right

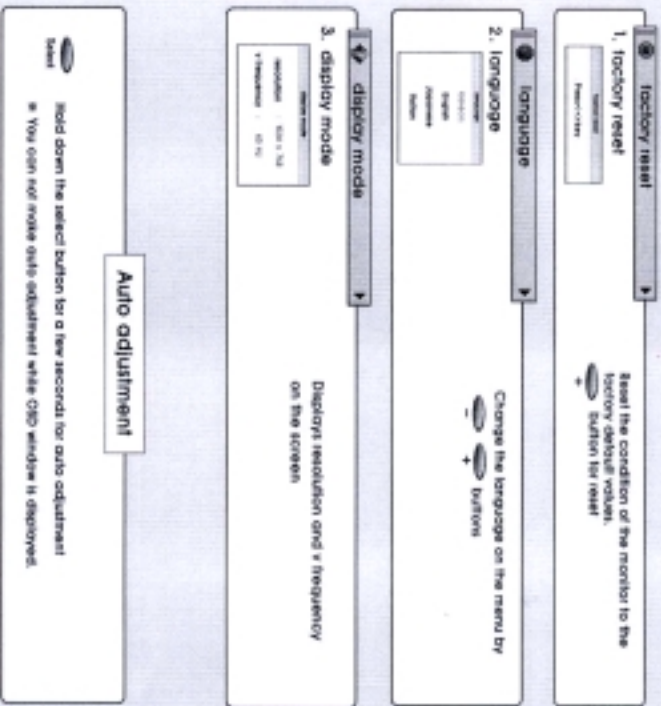
C osd v position 50 ▶

4. osd v position

Control the OSD window to the vertical direction

OSD window moves to the bottom
 OSD window moves to the top

■ Screen Control ■



Troubleshooting

■ Other ■

Problems	Solutions
Power indicator is off. Black screen.	Make sure that the power cord is properly connected.
'No signal. Check cable' message	Make sure the signal cable to the PC or monitor. Make sure the power is on.
Video mode is not supported.	Set the maximum resolution and frequency suitable for the monitor.
The image seems rolling down.	Check the signal cable and reconnect it. Try auto adjustment.
The image is not clear and blurry.	Try auto adjustment.
Image is not stable and appears to vibrate.	Check the display resolution and frequency from your PC or video board is on available mode for your monitor.



Troubleshooting

Problems	Solutions
Shadow image lingers.	Check the display resolution and frequency from your PC or video. If it is an overtable mode to your monitor.
The image is too dark or too light.	Adjust the brightness and contrast.
The image color is not stable and irregular.	Adjust the color temperature.
The image color is distorted like a dark shadow.	Adjust the color temperature.
White color does not look like white color.	Adjust the color temperature.
Power LED is blinking in orange color.	Monitor is on sleep mode.
Can't control buttons from the touch panel.	Contact service center.
Other Problems.	Contact service center.

Specification

Model	EV150V1	
Display Size	384.1(H) X 226.1(V)	15.0 inch
Pixel Pitch	0.297(H) X 0.297(V)	
Viewing angle	78° (left/right), 55°(up), 65°(down)	
Display color	16.2 M (coloreng)	
Contrast	200 : 1	
Resolution	1024 X 768 60Hz	
H frequency	31kHz ~ 60kHz	✓
V frequency	55Hz ~ 75Hz	
Sync type	Separate	
Audio	1W+1W	
Impedance	8Ω	
AC	100V ~ 240V, 50Hz/60Hz	
DC	12V, 3A	
Power Consumption	Max 30W, Standby 5W	
Monitor Size	384 X 316 X 56.5 (without stand) 384 X 384 X 178 (with stand)	
Weight	6.3 kg	
Tilt Angle	up 35° down 5°	
Features	53Hz fallback, OSD, auto adjustment	

* Specifications are subject to change without notice

Supported Video Mode

Resolution	H frequency[kHz]	V frequency[kHz]
640 X 480	31.47	60
640 X 480	37.86	72
640 X 480	37.50	75
720 X 400	31.47	70
800 X 600	35.16	56
800 X 600	37.88	60
800 X 600	48.88	72
800 X 600	46.88	75
1024 X 768	48.36	60
1024 X 768	56.48	70
1024 X 768	60.02	75

*Specifications are subject to change without notice.

Power-saving mode

- This monitor saves energy by switching your monitor into a low-power mode when it has not been use for a certain period of time.
- Power LED indicates the current power-saving condition of the monitor.
- The monitor automatically returns to normal operation when you move the computer's mouse or press any key on the keyboard because the power is not off.
- NOTE: Power-saving mode operates only on the computer that has power-saving mode.

Power-saving state	Normal Operation	Standby Mode
Power Indicator	Green	Amber blinking
Power consumption	30W	Less than 5W

User information

This equipment has been tested and found to comply with the limit for a Class B digital Device pursuant to part 15 of the FCC Rules. These limits are designed to provide reasonable protection against harmful interference in a residential installation. This equipment generates, uses, and can radio frequency energy if not installed and used in accordance with the instructions. However, there is no guarantee that interference will not occur in a particular installation. If this equipment does cause disturbing interference to radio or television reception, which can be determined by turning the equipment off and on, the user is encouraged to try to correct the interference by one of the following measures :

- Reorientate or relocate the receiving antenna.
- Increase the separation between the equipment and receiver.
- Connect the equipment into an outlet on a circuit different from that to which the Receiver is connected.
- Consult the dealer or an experience radio TV technician for help.

Changes or modifications not expressly approved by the party responsible for compliance could void the user's authority to operate the equipment.

The user's manual or instruction manual for an intentional or unintentional radiation shall contain the user that

- This device comply with part 15 of the FCC Rules. Operation is subject to the following two conditions:
- (1) This device may not cause harmful interference and
 - (2) This device must accept any interference that may cause undesired operation.

This is a Class B product based on the standard of the Voluntary Control Council for Interference from Information Technology Equipment (VCCI). If this is used near a radio or television receiver in a domestic environment, it may cause radio interference. Install and use the equipment according to the instruction manual.