

## Installing the Enterasys Wireless Outdoor AP3660



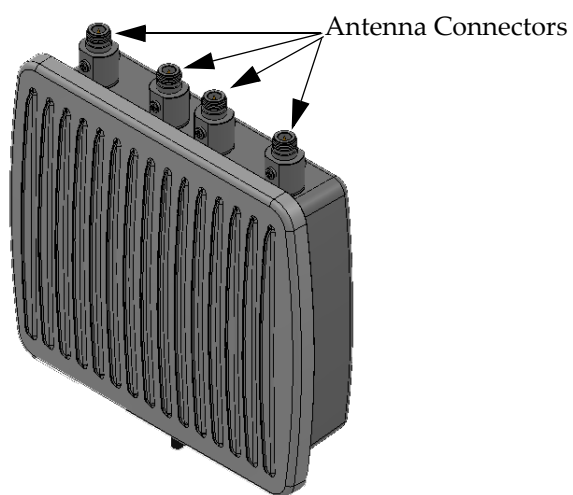
**Electrical Hazard:** Only qualified personnel should perform installation procedures.

For complete installation instructions and information about the Enterasys Wireless Outdoor AP3660, see the *Enterasys Wireless Outdoor AP3660 Installation Guide* at <http://www.enterasys.com/support/manuals>.

## Overview of the Enterasys Wireless Outdoor AP3660

The Enterasys Wireless Outdoor AP enables you to extend your Wireless LAN beyond the boundaries of indoor locations. They are resistant to harsh outdoor conditions and extreme temperatures. Using the advanced wireless distribution mesh feature of Enterasys Wireless LAN, the Enterasys Wireless Outdoor AP3660 can extend your Wireless LAN to outdoor locations without Ethernet cabling. A mounting bracket is available to enable quick and easy mounting of the Enterasys Wireless Outdoor APs to walls and poles.

**Figure 1 Enterasys Wireless Outdoor AP3660**



The Enterasys Wireless Outdoor AP3660 supports the 902.11n, 802.11a, 802.11g, and full backward compatibility with legacy 802.11b devices. The Enterasys Wireless Outdoor AP3660 with external antenna connectors supports a variety of antennas, providing range and coverage versatility.

The Enterasys Wireless Outdoor AP3660 interoperates fully with Enterasys Wireless LAN, including support for VoWLAN, branch office mode, guest services, RTLS, availability and mobility features.

## Unpacking the Enterasys Wireless Outdoor AP3660

Unpack the AP from its carton. The following components are supplied with the Enterasys Wireless Outdoor AP3660 package

- 1 mounting bracket
- 2 stainless steel tie back straps that support pole diameters up to 4 inches
- 4 M6 screws
- 4 washers

- 4 spring washers
- 1 ground screw
- RJ45 waterproof connector assembly
- A printed copy of the *Enterasys Wireless Outdoor Access Point Quick Reference - AP3660*



**Note:** Before you start mounting the Enterasys Wireless Outdoor AP3660, read the Safety Guidelines below.

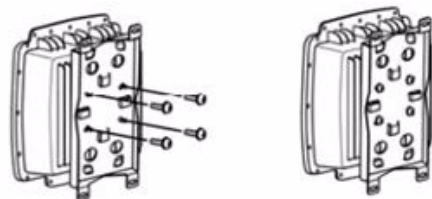
## Mounting and Connecting the Enterasys Wireless Outdoor AP3660

Mounting and connecting the Enterasys Wireless Outdoor AP3660 can be accomplished easily and safely by following the instructions in the full *Enterasys Wireless Outdoor Access Point AP3660 Installation Guide*. The installation of the Outdoor AP should be performed by a professional installer to ensure proper operation and compliance with safety guidelines.

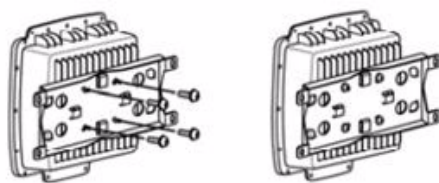
### Mounting the Outdoor AP3660:

1. Attach the mounting bracket to the AP3660 using four M6 screws and washers. You can attach the bracket to the AP in either the vertical or horizontal position as shown in Figures 2 and 3.

**Figure 2 Mounting Bracket - Vertical Position**



**Figure 3 Mounting Bracket - Horizontal Position**

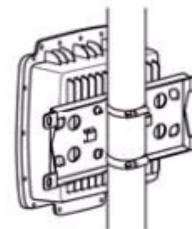


2. You can mount the AP3660 to either a pole or a wall:
  - a. To mount the AP3660 with the attached mounting bracket to a pole, use the supplied stainless steel tie back straps. You can mount the AP3660 to a pole in one of three possible configurations, as shown in Figures 4, 5, and 6.

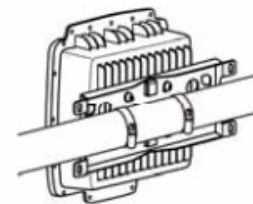
**Figure 4 AP3660 - Pole Mount Option 1**



**Figure 5 AP3660 - Pole Mount Option 2**

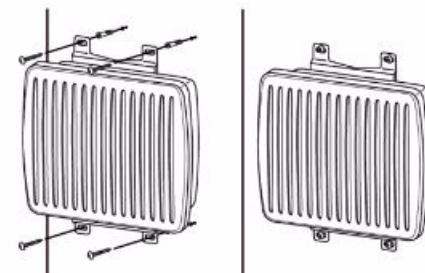


**Figure 6 AP3660 - Pole Mount Option 3**



- b. Mount the AP3660 and the attached mounting bracket to a wall using four wood/gyprock screws as shown in Figure 7.

**Figure 7 AP3660 - Wall Mount**



3. Install the external antenna intended for area coverage. For information about antenna selection and installation, refer to the *External Antenna Site Preparation and Installation Guide*.
4. Attach the external antenna cables to the RP-N connectors on the AP.

## Connecting and powering the AP

You can power up the AP in one of the following ways:

### • Power over Ethernet: Adding PoE injector

You can provide power to the Ethernet cable with a PoE injector. The PoE injector must be 802.3at compliant. The PoE injector is not provided with the AP.

A waterproof RJ45 connector is provided to connect the PoE injector to the AP3660. You must connect the RJ45 connector to the RJ45 cable. For instructions, refer to the full *Enterasys Wireless Outdoor Access Point AP3660 Installation Guide*.

### • Power by external power supply:

You can purchase an external power supply unit (WS-PS3660-MR) to power the AP. See your Enterasys sales representative for details.

For power supply installation instructions, refer to the *Enterasys Wireless Outdoor Access Point AP3660 Installation Guide*.

## Regulatory and Compliance information

### Federal Communications Commission (FCC) Notice:

This device complies with Part 15 of the FCC rules. Operation is subject to the following two conditions: (1) this device may not cause harmful interference, and (2) this device must accept any interference received, including interference that may cause undesired operation.



**Warning:** Changes or modifications made to this device which are not expressly approved by the party responsible for compliance could void the user's authority to operate the equipment

### Industry Canada Notice:

This digital apparatus does not exceed the Class B limits for radio noise emissions from digital apparatus set out in the Radio Interference Regulations for the Canadian Department of Communications.

Le présent appareil numérique n'émet pas de bruits radioélectriques dépassant les limites applicables aux appareils numériques de la class B prescrites dans le Règlement sur le brouillage radioélectrique édicté par le ministère des Communications du Canada.

Refer to the HiPath Wireless Controller, Access Points, and Convergence Software User Guide Installation Guide, Appendix B, "Regulatory information," for complete regulatory information.

## Safety Guidelines

This section contains notices that you have to adhere to ensure your personal safety and to prevent any damage to the equipment.

### Qualified Personnel:



**Electrical Hazard:** Only qualified personnel should perform installation procedures. Within the context of the safety notes in this documentation qualified persons are defined as persons who are authorized to commission, ground and label devices, systems and circuits in accordance with established safety practices and standards. A qualified person understands the requirements risks involved with installing outdoor electrical equipment in accordance with national codes.

### Grounding Warning:



**Warning:** To operate the Enterasys Wireless Outdoor AP3660 safely, the chassis ground connector must have a suitable cable connected. Do not use the Enterasys Wireless Outdoor AP3660 without a ground cable connected.

### Lightning Protection Warning:



**Warning:** Antennas installed outdoors must be within the area covered by a lightning protection system. Make sure that all conducting systems entering from outdoors can be protected by a lightning protection potential equalization system. When implementing your lightning protection concept, make sure you adhere to the VDE 0182 or IEC 62305 standard.

The AP3660 has a built-in lightning protector; no external lightning protector is required. You must however note that the lightning protector is not an adequate protection against a lightning strike. The lightning protector only works within the framework of a comprehensive lightning protection concept. If you have questions, ask a qualified specialist company.

## Hazardous Substances

This product complies with the requirements of European Directive, 2002/95/EC, Restriction of Hazardous Substances (RoHS) in Electrical and Electronic Equipment.

## European Waste Electrical and Electronic Equipment (WEEE) Notice



In accordance with Directive 2002/96/EC of the European Parliament on waste electrical and electronic equipment (WEEE):

1. The symbol above indicates that separate collection of electrical and electronic equipment is required and that this product was placed on the European market after August 13, 2005, the date of enforcement for Directive 2002/96/EC.
2. When this product has reached the end of its serviceable life, it cannot be disposed of as unsorted municipal waste. It must be collected and treated separately.
3. It has been determined by the European Parliament that there are potential negative effects on the environment and human health as a result of the presence of hazardous substances in electrical and electronic equipment.
4. It is the users' responsibility to utilize the available collection system to ensure WEEE is properly treated. For information about the available collection system, please go to [www.enterasys.com/services/support/](http://www.enterasys.com/services/support/) or contact Enterasys Customer Support at 353 61 705586 (Ireland).

## Declaration of Conformity

A "Declaration of Conformity" in accordance with the preceding directives and standards has been made and is on file at Dell Inc. Products Europe BV, Limerick, Ireland.

## Notice

Enterasys Networks reserves the right to make changes in specifications and other information contained in this document and its Web site without prior notice. The reader should in all cases consult Enterasys Networks to determine whether any such changes have been made.

The hardware, firmware, or software described in this document is subject to change without notice.

IN NO EVENT SHALL Enterasys Networks BE LIABLE FOR ANY INCIDENTAL, INDIRECT, SPECIAL, OR CONSEQUENTIAL DAMAGES WHATSOEVER (INCLUDING BUT NOT LIMITED TO LOST PROFITS) ARISING OUT OF OR RELATED TO THIS DOCUMENT, WEB SITE, OR THE INFORMATION CONTAINED IN THEM, EVEN IF Enterasys Networks HAS BEEN ADVISED OF, KNEW OF, OR SHOULD HAVE KNOWN OF, THE POSSIBILITY OF SUCH DAMAGES.

Enterasys Networks, Inc.  
50 Minuteman Road  
Andover, MA 01810

© 2010 Enterasys Networks, Inc. All rights reserved.  
Part Number: 9034581 September 2010

ENTERASYS and ENTERASYS NETWORKS and any logos associated therewith, are trademarks or registered trademarks of Enterasys Networks, Inc., in the United States and/or other countries. For a complete list of Enterasys trademarks, see <http://www.enterasys.com/company/trademarks.aspx>.

All other product names mentioned in this document may be trademarks or registered trademarks of their respective companies.

# Enterasys Wireless

## Outdoor Access Point

## Quick Reference

### AP3660

## 产品说明书附件

### Supplement to Product Instructions

部件名称 (Parts)	有毒有害物质或元素 (Hazardous Substance)					
	铅 (Pb)	汞 (Hg)	镉 (Cd)	六价铬 (Cr <sup>6+</sup> )	多溴联苯 (PBB)	多溴二苯醚 (PBDE)
金属部件 (Metal Parts)	×	○	○	×	○	○
电路模块 (Circuit Modules)	×	○	○	×	○	○
电缆及电缆组件 (Cables & Cable Assemblies)	×	○	○	×	○	○
塑料和聚合物部件 (Plastic and Polymeric parts)	○	○	○	○	○	×
电路开关 (Circuit Breakers)	○	○	×	×	○	○

○: 表示该有毒有害物质在该部件所有均质材料中的含量均在 SJ/T 11363-2006 标准规定的限量要求以下。  
Indicates that the concentration of the hazardous substance in all homogeneous materials in the parts is below the relevant threshold of the SJ/T 11363-2006 standard.

×: 表示该有毒有害物质至少在该部件的某一均质材料中的含量超出 SJ/T 11363-2006 标准规定的限量要求。  
Indicates that the concentration of the hazardous substance of at least one of all homogeneous materials in the parts is above the relevant threshold of the SJ/T 11363-2006 standard.

对销售之日的所售产品, 本表显示, 供应链的电子产品信息产品可能包含这些物质。注意: 在所售产品中可能会也可能不会含有所有列出的部件。  
This table shows where these substances may be found in the supply chain of Enterasys' electronic information products, as of the date of sale of the enclosed product. Note that some of the component types listed above may or may not be a part of the enclosed product.

除非另外特别的标注, 此标志为针对所涉产品的环保使用期标志。某些零部件会有一个不同的环保使用期(例如, 电池单元模块)贴在其产品上。  
此环保使用期限只适用于产品是在产品手册中所规定的条件下工作。  
The Environmentally Friendly Use Period (EFUP) for all enclosed products and their parts are per the symbol shown here, unless otherwise marked. Certain parts may have a different EFUP (for example, battery modules) and so are marked to reflect such. The Environmentally Friendly Use Period is valid only when the product is operated under the conditions defined in the product manual.



## FCC Statement:

### **Federal Communication Commission Interference Statement**

This equipment has been tested and found to comply with the limits for a Class B digital device, pursuant to Part 15 of the FCC Rules. These limits are designed to provide reasonable protection against harmful interference in a residential installation. This equipment generates, uses and can radiate radio frequency energy and, if not installed and used in accordance with the instructions, may cause harmful interference to radio communications. However, there is no guarantee that interference will not occur in a particular installation. If this equipment does cause harmful interference to radio or television reception, which can be determined by turning the equipment off and on, the user is encouraged to try to correct the interference by one of the following measures:

- Reorient or relocate the receiving antenna.
- Increase the separation between the equipment and receiver.
- Connect the equipment into an outlet on a circuit different from that to which the receiver is connected.
- Consult the dealer or an experienced radio/TV technician for help.

For product available in the USA/Canada market, only channel 1~11 can be operated. Selection of other channels is not possible.

This device and its antenna(s) must not be co-located or operation in conjunction with any other antenna or transmitter.

FCC NOTICE: To comply with FCC part 15 rules in the United States, the system must be professionally installed to ensure compliance with the Part 15 certification. It is the responsibility of the operator and professional installer to ensure that only certified systems are deployed in the United States. The use of the system in any other combination (such as co-located antennas transmitting the same information) is expressly forbidden.

### **IMPORTANT NOTE:**

#### **FCC Radiation Exposure Statement:**

This equipment complies with FCC radiation exposure limits set forth for an uncontrolled environment. This equipment should be installed and operated with minimum distance 100cm between the radiator & your body.

### **IMPORTANT NOTE:**

This module is intended for OEM integrator only and limited to host with brand: enterasys and model: WS-AP3660. The OEM integrator is still responsible for the FCC compliance requirement of the end product, which integrates this module.

100cm minimum distance has to be able to be maintained between the antenna and the users for the host this module is integrated into. Under such configuration, the FCC radiation exposure limits set

forth for a population/uncontrolled environment can be satisfied.

Any changes or modifications not expressly approved by the manufacturer could void the user's authority to operate this equipment.

#### **USERS MANUAL OF THE END PRODUCT:**

In the users manual of the end product, the end user has to be informed to keep at least 100cm separation with the antenna while this end product is installed and operated. The end user has to be informed that the FCC radio-frequency exposure guidelines for an uncontrolled environment can be satisfied. The end user has to also be informed that any changes or modifications not expressly approved by the manufacturer could void the user's authority to operate this equipment.

#### **LABEL OF THE END PRODUCT:**

The final end product must be labeled in a visible area with the following " Contains TX FCC ID: QXO-OAP36A ". The FCC part 15.19 statement below has to also be available on the label: This device complies with Part 15 of FCC rules. Operation is subject to the following two conditions: (1) this device may not cause harmful interference and (2) this device must accept any interference received, including interference that may cause undesired operation.

### **IC Statement**

Operation is subject to the following two conditions: (1) this device may not cause interference, and (2) this device must accept any interference, including interference that may cause undesired operation of the device.

For product available in the USA/Canada market, only channel 1~11 can be operated. Selection of other channels is not possible.

This device and its antenna(s) must not be co-located or operation in conjunction with any other antenna or transmitter.

To reduce potential radio interference to other users, the antenna type and its gain should be so chosen that the equivalent isotropically radiated power (e.i.r.p) is not more than that permitted for successful communication.

This device has been designed to operate with the antennas listed below, and having a maximum gain of [23] dB. Antennas not included in this list or having a gain greater than [23] dB are strictly prohibited for use with this device. The required antenna impedance is 50 ohms.

The device could automatically discontinue transmission in case of absence of information to transmit, or operational failure. Note that this is not intended to prohibit transmission of control or signaling

information or the use of repetitive codes where required by the technology.

The maximum antenna gain permitted (for devices in the bands 5250-5350 MHz and 5470-5725 MHz) to comply with the e.i.r.p. limit.

High-power radars are allocated as primary users (meaning they have priority) of the bands 5250-5350 MHz and 5650-5850 MHz and these radars could cause interference and/or damage to LE-LAN devices.

**IMPORTANT NOTE:**

**IC Radiation Exposure Statement:**

This equipment complies with IC RSS-102 radiation exposure limits set forth for an uncontrolled environment. This equipment should be installed and operated with minimum distance 100cm between the radiator & your body.

**IMPORTANT NOTE:**

This module is intended for OEM integrator only and limited to host with brand: enterasys and model: WS-AP3660. The OEM integrator is still responsible for the IC compliance requirement of the end product, which integrates this module.

20cm minimum distance has to be able to be maintained between the antenna and the users for the host this module is integrated into. Under such configuration, the IC RSS-102 radiation exposure limits set forth for a population/uncontrolled environment can be satisfied.

Any changes or modifications not expressly approved by the manufacturer could void the user's authority to operate this equipment.

**USERS MANUAL OF THE END PRODUCT:**

In the users manual of the end product, the end user has to be informed to keep at least 100cm separation with the antenna while this end product is installed and operated. The end user has to be informed that the IC radio-frequency exposure guidelines for an uncontrolled environment can be satisfied. The end user has to also be informed that any changes or modifications not expressly approved by the manufacturer could void the user's authority to operate this equipment. IC statement is required to be available in the users manual: This Class B digital apparatus complies with Canadian ICES-003. Operation is subject to the following two conditions: (1) this device may not cause harmful interference and (2) this device must accept any interference received, including interference that may cause undesired operation.

**LABEL OF THE END PRODUCT:**

The final end product must be labeled in a visible area with the following " Contains TX IC: 4138A-OAP36A ".