

# ***EZKEY CORP***

## **5 Button Optical Mouse**

***ERGO***

### **INSTALLATION & USER'S GUIDE**

Important Notice: Please read this manual carefully

## **FCC AND CE RADIATION NORM**

### **FCC**

This equipment has been tested and found to comply with limits for Class B digital device pursuant to Part 15 of Federal Communications Commission (FCC) rules.

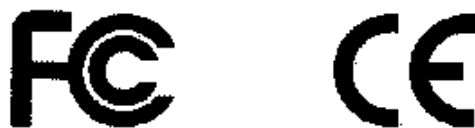
### **CE**

This equipment has been tested and found to comply with the limits of the European Council Directive on the approximation of the law of the member states relating to electromagnetic compatibility (89/336/EEC) according to EN 55022 Class B.

### **FCC and CE Compliance Statement**

These limits are designed to provide reasonable protection against frequency interference in residential installation. This equipment generates, uses and can radiate radio frequency energy, and if not installed or used in accordance with the instructions, may cause harmful interference to radio communication. However, there is no guarantee that interference will not occur in television reception, which can be determined by turning the equipment off and on. The user is encouraged to try and correct the interference by one or more of the following measures:

- Reorient or relocate the receiving antenna
- Increase the separation between the equipment and the receiver.
- Connect the equipment into an outlet on a circuit different from that to which the receiver is connected to.



### **CAUTION!**

The Federal Communications Commission warns the user that changes or modifications to the unit not expressly approved by the party responsible for compliance could void the user's authority to operate the equipment.

## I. Package Contents

5 Button Optical Mouse  
USB to PS2 Connector  
Driver Diskette  
User's Manual

## II. System Requirements

Windows 98/98SE/2000/ME/XP  
Available USB or PS2 Port

## III. Installation

1. Turn off your computer.
2. Plug your mouse into the computer's PS2 or USB port.
3. Turn on your PC and start Windows.
4. Insert the driver diskette included in the package into the floppy drive of your PC
5. Click START button on the Taskbar and select RUN
6. From the RUN dialogue box, type A:\SETUP , then click OK
7. Follow on-screen instructions
8. Restart your PC

## IV. About Buttons

The 5 Button Optical Mouse has five different buttons and a scroll wheel, as shown in Figure 1. The functions of these buttons are described below:

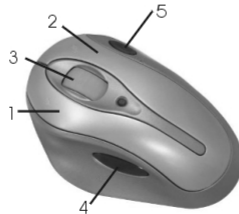


Fig.1

BUTTON NO.	FUNCTION
Button 1	Left mouse button function
Button 2	Right mouse button function
Button 3	Programmable third mouse button and scroll wheel
Button 4	Programmable fourth mouse button function
Button 5	Programmable fifth mouse button function

## V. Software Features

After the system restarts you will find a mouse icon, as shown in (Figure 2) your taskbar. Double click this icon and the Mouse Properties window open. Four tabs of options are available: Buttons (figure 3), Pointers (figure 5) and Settings (figure 6).



Fig.2



Fig.3

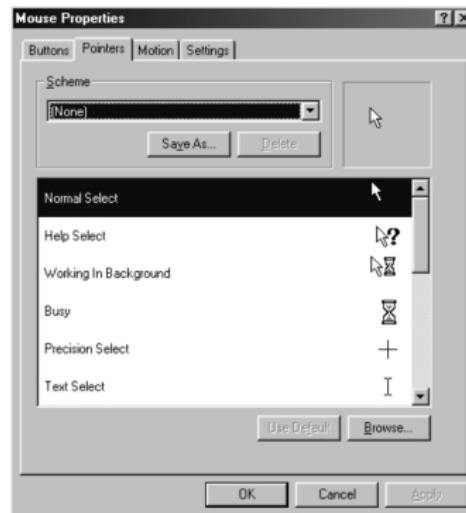


Fig.4

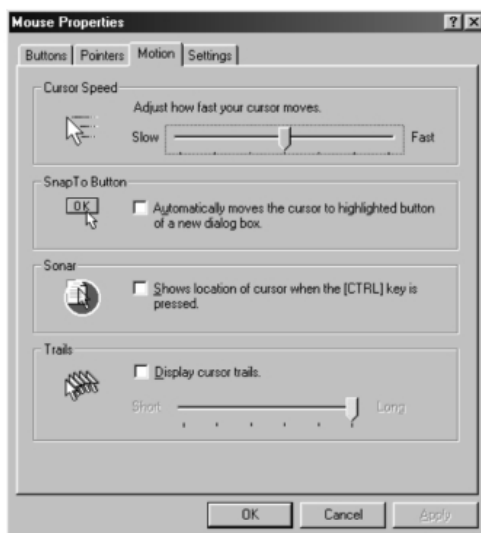


Fig.5

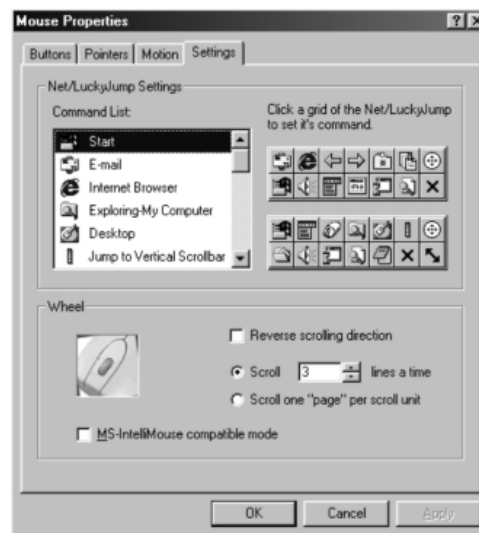


Fig.6