

EGRO



5 Button Optical Mouse
SKU: 306126

Installation & User's Guide

Important Notice: Please read this manual carefully

All brand names and trademarks are the property of their respective owners

FCC AND CE RADIATION NORM

FCC

This equipment has been tested and found to comply with limits for Class B digital device pursuant to Part 15 of Federal Communications Commission (FCC) rules.

CE

This equipment has been tested and found to comply with the limits of the European Council Directive on the approximation of the law of the member states relating to electromagnetic compatibility (89/336/EEC) according to EN 55022 Class B.

FCC and CE Compliance Statement

These limits are designed to provide reasonable protection against frequency interference in residential installation. This equipment generates, uses and can radiate radio frequency energy, and if not installed or used in accordance with the instructions, may cause harmful interference to radio communication. However, there is no guarantee that interference will not occur in television reception, which can be determined by turning the equipment off and on. The user is encouraged to try and correct the interference by one or more of the following measures:

- Reorient or relocate the receiving antenna
- Increase the separation between the equipment and the receiver.
- Connect the equipment into an outlet on a circuit different from that to which the receiver is connected to.



CAUTION!

The Federal Communications Commission warns the user that changes or modifications to the unit not expressly approved by the party responsible for compliance could void the user's authority to operate the equipment.

I. Package Contents

5 Button Optical Mouse
USB to PS2 Connector
Driver Diskette
User's Manual

II. System Requirements

Windows 98/98SE/2000/ME/XP
Available USB or PS2 Port

III. Installation

1. Turn off your computer.
2. Plug your mouse into the computer's PS2 or USB port.
3. Turn on your PC and start Windows.
4. Insert the driver diskette included in the package into the floppy drive of your PC
5. Click START button on the Taskbar and select RUN
6. From the RUN dialogue box, type A:\SETUP , then click OK
7. Follow on-screen instructions
8. Restart your PC

IV. About Buttons

The 5 Button Optical Mouse has five different buttons and a scroll wheel, as shown in Figure 1. The functions of these buttons are described below:

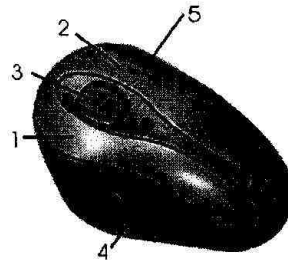


Fig.1

| BUTTON NO. | FUNCTION |
|------------|--|
| Button 1 | Left mouse button function |
| Button 2 | Right mouse button function |
| Button 3 | Programmable third mouse button and scroll wheel |
| Button 4 | Programmable fourth mouse button function |
| Button 5 | Programmable fifth mouse button function |

V. Software Features

After the system restarts you will find a mouse icon, as shown in (Figure 2), in your taskbar. Double click this icon and the Mouse Properties window will open. Four tabs of options are available: Buttons (figure 3), Pointers (figure 4), Motion (figure 5) and Settings (figure 6).



Fig.2

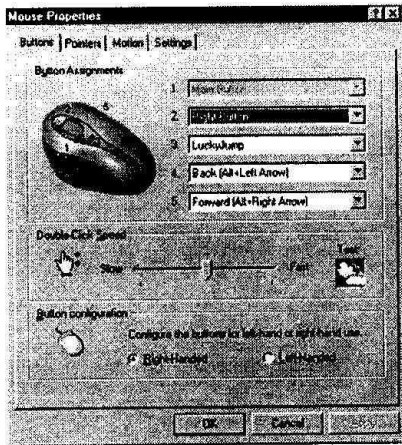


Fig.3

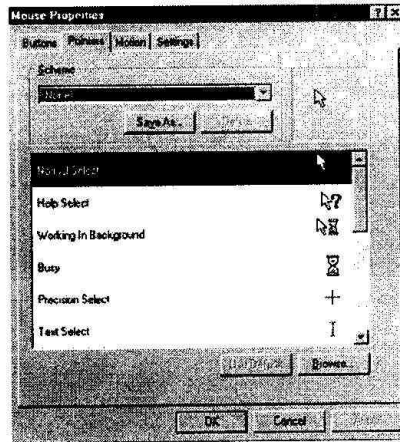


Fig.4

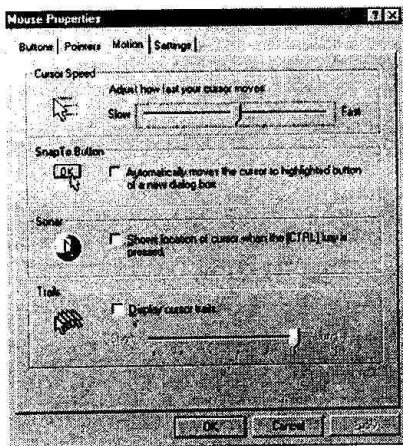


Fig.5

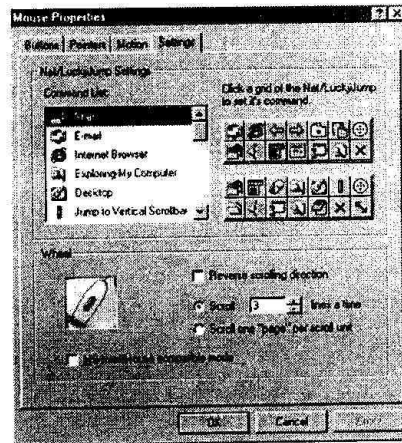


Fig.6

VI. Specifications

Resolution: 400DPI
Cord Length: 4.8'

COMPUSA.
WHERE AMERICA BUYS TECHNOLOGY.

GARANTÍA LIMITADA POR 90 DÍAS

COMPUSA GARANTIZA QUE ESTE PRODUCTO ESTARÁ LIBRE DE DEFECTOS DE MATERIALES Y FABRICACIÓN POR NOVENTA DÍAS.

SI SE ENCONTRARA UN DEFECTO DE ESTE TIPO DENTRO DE LAS LIMITACIONES DE ESTA GARANTÍA, **COMPUSA** SE COMPROMETE, A SU ELECCIÓN, A REPARAR O REEMPLAZAR EL PRODUCTO CON UN ARTÍCULO ÍGUAL U OTRO DE IGUAL VALOR, LIBRE DE CARGO, AL COMPRADOR-CONSUMIDOR ORIGINAL.

DEVUELVA EL PRODUCTO A LA TIENDA DONDE LO ADQUIRIÓ. ESTA GARANTÍA NO ES VÁLIDA SI EL ARTÍCULO HA SIDO MODIFICADO, MAL USADO, FORZADO, SOMETIDO A CONDICIONES DE TRABAJO ANORMALES O TRANSFERIDO A OTRA PERSONA QUE NO SEA EL COMPRADOR-CONSUMIDOR ORIGINAL.

COMPUSA INC.
DALLAS, TEXAS 75240

Soporte Técnico

- Si tiene alguna pregunta, por favor póngase en contacto con nosotros via E-mail: techsupport@fourstari.com
- O llame a nuestra línea gratuita de ayuda al 1-800-639-3803 entre las 9:00 am y las 5 pm (Este)
- Si necesita drivers visite fml.compusa.com



©fourstargroup

COMPUSA

WHERE AMERICA BUYS TECHNOLOGY.

NINETY DAY LIMITED WARRANTY
COMPUSA WARRANTS THAT THIS PRODUCT IS FREE FROM ANY DEFECTS IN MATERIALS OR WORKMANSHIP FOR NINETY DAYS. IF SUCH A DEFECT IS DISCOVERED WITHIN THIS WARRANTY'S LIMITATIONS, **COMPUSA** AGREES AT ITS SOLE DISCRETION, TO REPAIR OR REPLACE WITH THE SAME ITEM OR ONE OF EQUAL VALUE, FREE OF CHARGE TO THE ORIGINAL CONSUMER PURCHASER. RETURN TO THE STORE WHERE PURCHASED.

THIS WARRANTY SHALL NOT APPLY IF THIS ITEM IS MODIFIED, MISUSED, TAMPERED WITH, SUBJECTED TO ABNORMAL WORKING CONDITIONS, OR TRANSFERRED TO SOMEONE OTHER THAN THE ORIGINAL CONSUMER PURCHASER.

COMPUSA INC.
DALLAS, TEXAS 75240

Technical Support

- Should you have any questions, please contact us via
Email: techsupport@fourstari.com
 - Or call our toll-free help line at
1-800-639-3803
between 9:00AM to 5:00PM Eastern time
- For drivers please visit fmi.compusa.com



©fourstargroup