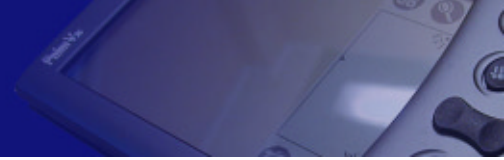


blue5

Manual





Copyright and trademark notice

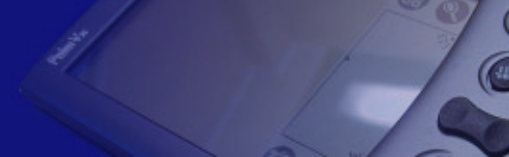
The words HotSync, Palm and Palm OS are all registered trademarks of Palm Inc, or its subsidiaries in one or more countries. Other products and brand names may be the trademarks or registered trademarks of their respective owners.

The BLUETOOTH trademark is owned by Telefonaktiebolaget L M Ericsson, Sweden.



Contents

1.0 Getting started	4
1.1 Package includes	
1.2 Setting up the hardware	4
2.0 Installing the software	4
2.1 Check the installation	4
3.1 Pairing basics.....	
3.2.1 Connecting to your phone.....	4
3.2.2 Connecting to a computer.....	5
3.3 Settings.....	
4.0 Palm Preferences	6
4.1 Network	
5.0 Palm features	6
5.1 HotSync over Bluetooth	6
5.2 Replicated port	
6.0 Troubleshooting	7
6.1 The Button	
6.2 Pairing problems	
6.3 HotSync problems.....	
6.4 Discoverable mode.....	7
7.0 Limitations	8
8.0 Blue5 regulatory information	8
8.1 FCC approval	
8.2 Canadian RFI Statement.....	8
8.3 Euproean Union (EU) and EFTA.....	8



1.0 Getting started

1.1 Package includes

You should have in your possession a Blue5 and a CD containing all the software you will need to take full advantage of this Bluetooth device. This manual should be sufficient help to get you up and running with your new Blue5.



1.2 Setting up the hardware

The Blue5 is to be connected to the bottom of the Palm. You will hear a clicking sound when it snaps on successfully. It uses power from the Palm, so you do not need an external cable of any kind.

2.0 Installing the software

Make sure you have the Palm desktop installed and working on your computer. Then place your Palm in the cradle. The software needed for the Blue5 is located on the CD labelled *Installation Disk*. Put it in your CD-player and the Installation program will start automatically (if not, press the *Start-menu* and choose *Run*. Type the letter of your drive e. g *d:* and click on *Startup*). Follow the installation instructions, and the installation should proceed without any problems.

2.1 Check the installation

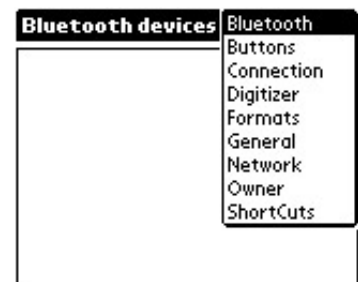
After the installation you will find a new menu choice, on your Palm, in *Prefs* called *Bluetooth preference screen*. To find it, click the *Application* button followed by the *Prefs* icon. This application (as described in 3.0) is the main one you need for using the Bluetooth link. Tap on it and proceed to the next step in this manual.

3.0 Bluetooth preference screen

The Bluetooth preference screen is the link to hook up your Palm with other Bluetooth devices. It is a user-friendly way to find, add and keep track of your Bluetooth devices. The process of linking up other Bluetooth devices is called *Pairing*, and will be referred to as that from now. Continue to 3.1 *Pairing basics* for the pairing basics.

3.1 Pairing basics

From here you can connect your Palm to a Bluetooth device of your choice: To do this you must have your Bluetooth plug connected on your Palm. For the moment, the Blue5 supports pairing with mobile phones, computers (requires Bluetooth enabled computer) and other Palms (require Blue5 on both Palm's).



Add device

Now prepare your remote device and press the search button.

Require passkey

Search for

▼ All types

Search...

Cancel

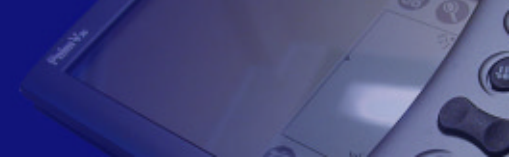
Found devices

Select a device from the list and press the ok button.



OK

Cancel



3.2.1 Connecting to your phone

Start by clicking on *Add device* in the *Bluetooth Preference Screen*. Now make sure that your phone is in **Discoverable mode* before you select *Phone* from the type list and click *Search* on the Palm.

Now the Palm will search for a Bluetooth-enabled phone, and when it finds one, it will be presented to you in a list. If it finds more than one you will see them all in this list. Choose the right one and click *OK*. Now it's time to set a passkey. Simply type in a number or a combination of numbers on your Palm and click *OK*. After this you must enter the same code on the phone. If the codes match, the devices are successfully paired.

A new list will appear, with all the services available on this phone. To connect to the Internet, you need Dial-up, so select that option and click *OK*. Now you're back at the main page of the Bluetooth preference screen and you should see a device on the list.

3.2.2 Connecting to a computer

This is the only way to enable HotSync over Bluetooth (see 5.1 HotSync over Bluetooth). First you need to make sure that the Bluetooth device on your computer is working correctly. Please refer to the device's user manual for assistance.

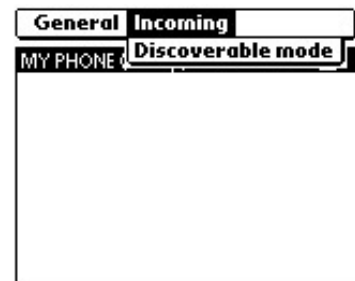
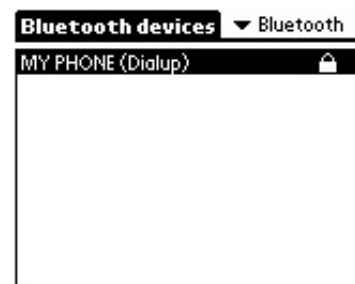
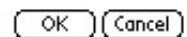
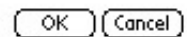
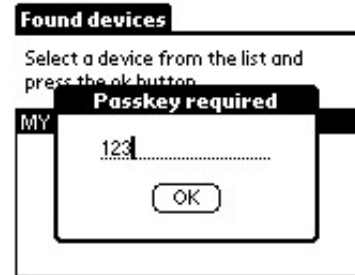
Turn on your Palm and enter the Bluetooth preference screen in the top-right menu in *Prefs*. Click *Add device* and choose *Computer* from the type-menu. Now you need to put your computer in a **Discoverable Mode*: If you don't know how to do this please refer to the device's user manual.

The Palm should now prompt for the passkey. Simply type in a number or a combination of numbers on your Palm and click *OK*. After this you need to enter the same code on the computer. If the codes match you have successfully paired the devices.

A new list will appear, with all the services available on this computer. Choose COM-port (one should be listed in the Service list) and click *OK*.

3.2.3 Connecting to another Palm

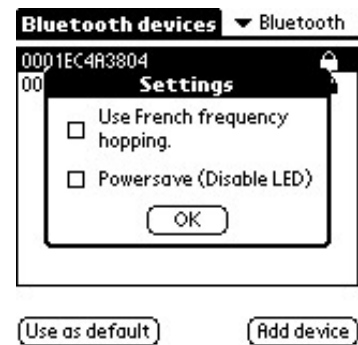
This procedure is identical to 3.1.2. However, on one of the Palms you need to start *Discoverable mode* before you follow the steps in 3.2.2. Just press the menu button, choose *Incoming* and press *Discoverable mode*. The passkey procedure is similar to both 3.2.1 and 3.2.2.



* See 6.4 on how to set your phone in Discoverable mode.

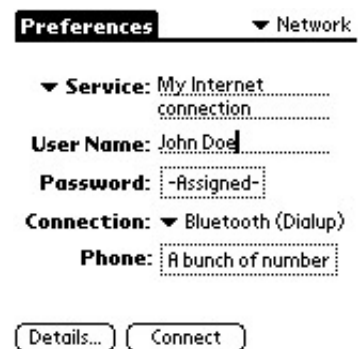
3.3 Settings

Make sure you have checked *Use French frequency hopping* when your using the Blue5 in France, since is against the law to use the Blue5 default frequency range in France. When you check this button it becoms legal there, without any loss of speed or function. However you will have to make sure that your other Bluetooth devices uses the same frequency range, else you will not be able to communicate with them. *Powersave* mode disables the LED (the blinking button), and will save some batterytime. How much depends on how you use the Bluetooth link. (By disabling the feature you will not be able to see when your connected.)



4.0 Palm Preferences

Now that you have installed a device link you will have to set up the Palm to use that selected link. Make sure you have your Internet information to hand (phone number, username and password) before you move on to the next step. Move back to the *Application Launcher* and tap on *Prefs*.



4.1 Network

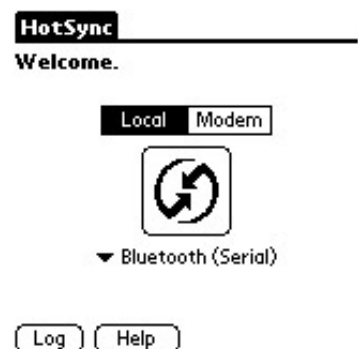
Select *Network* from the dropdown menu at your top-right. Type in the name of your *service*, *user name*, *password* and *phone number*. From the *Connection* list you select *Bluetooth (Dialup)* choice. Now you should be able to click on *Connect* and the Palm will initiate the phone call to the specified number and log on. If that is the case, congratulations! If not, review the steps of this manual and ensure you have carried out all the instructions properly. If that doesn't help look further down in the *6.0 Troubleshooting*.

5.0 Palm features

5.1 HotSync over Bluetooth

In order to access HotSync over Bluetooth you must have a Bluetooth device on the computer, and you must have carried out the procedures described above in chapter 3.1.2. Simply move to the *Application Launcher* and tap on *HotSync*. From the menu below the HotSync button you should now be able to select *Bluetooth (Serial)*.

On the computer, in the HotSync Manager, you must set up the correct COM-port that is Bluetooth-enabled. To do that you click your right mouse button on your HotSync Manager icon and choose *Setup*. Select *local* and change the Serial port to the right one followed by *OK*. Once this procedure is done you simply click on the HotSync icon on the Palm and the synchronisation begins.





5.2 Replicated port

The replicated port on the Blue 5 enables you to cradle your Palm and load the batteries while the Blue 5 remains on. This however will break all Bluetooth communication, so make sure you're not on-line while doing this. If you have a Bluetooth-enabled computer and have configured it to HotSync over Bluetooth, you can eliminate this problem by disconnection the cradle from the serial port of your computer, and the Bluetooth communication will work again.

6.0 Troubleshooting

If your device does not connect or you are experiencing other problems, please read on. You might be able to get help from the flashing on the button read more about that in section 6.1 *The Button*.

6.1 The Button

The button on the Blue5 will light up and blink rapidly for several seconds while you're connecting your Blue5 to other Bluetooth devices. When you have a Bluetooth link up and running the button will blink once every 4 seconds, to show that you are connected. When you send and receive data the button will blink more rapidly.

6.2 Pairing problems

The pairing process is a crucial operation. If this doesn't work, you won't be able to connect or use any Bluetooth features. So make sure that your other Bluetooth-enabled phone is in *Discoverable mode* when you're trying to connect. See 6.4 Discoverable mode for help on that.

6.3 HotSync problems

When using HotSync over a Bluetooth connection the largest problem usually isn't the Palm or the Blue5, but the computer's configuration. To make sure that the Bluetooth device on the computer is working correctly, please refer to the device's user manual.

6.4 Discoverable mode

The procedure to set your Bluetooth-enabled device into *Discoverable mode* is different with almost every Bluetooth device. This is why you need to refer to the manual for your specific Bluetooth device. The purpose of Discoverable mode is that you put the device in a finder's mode. It is sending out a signal that can be discovered by any Bluetooth device searching for one, e. g. the Blue5 that you have just bought. The passkey is used as a security measure so that no one else can pair with your Palm or phone.



7.0 Limitations

The Palm Traveller's kit will not work while you've got the Blue5 connected on your Palm. As mentioned in chapter 5.2, your Bluetooth connection will be lost when you cradle your Palm.

8.0 Blue5 regulatory information

This product complies with any mandatory product specification in any country where the product is sold. In addition, the product complies with the following.

8.1 FCC approval

This device complies with Part 15 of the FDD Rules. Operation is subject to the following two conditions. (1) this device may not cause harmful interference, and (2) this device must accept any interference received, including interference that may cause undesired operation.



8.2 Canadian RFI Statement

This Class B digital apparatus meets all requirements of the Canadian Interference-Causing Equipment Regulations.

8.3 Euproean Union (EU) and EFTA

This equipment complies with the R&TTE directive 1999/5/EC and has been provided with the CE mark accordingly. The identification number is 0682.

