



Focus Premium Laser Scanner Safety Manual



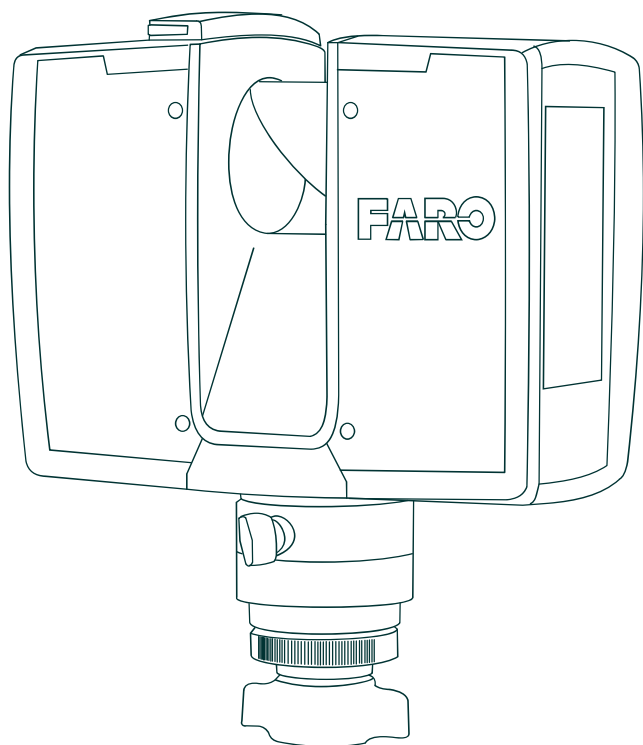


Figure 1-1

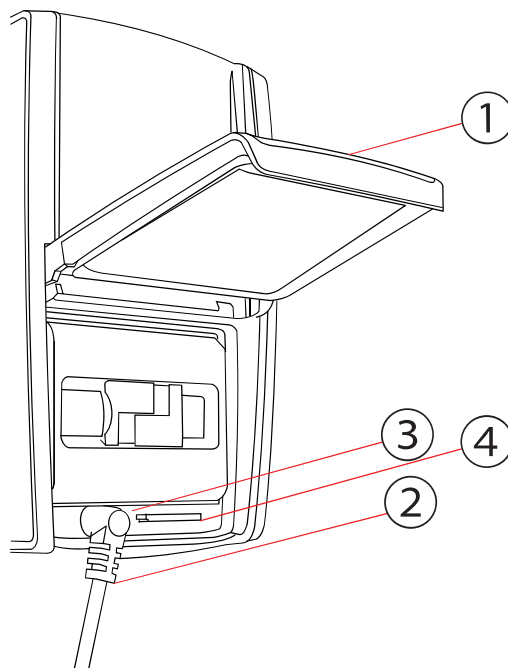


Figure 1-3

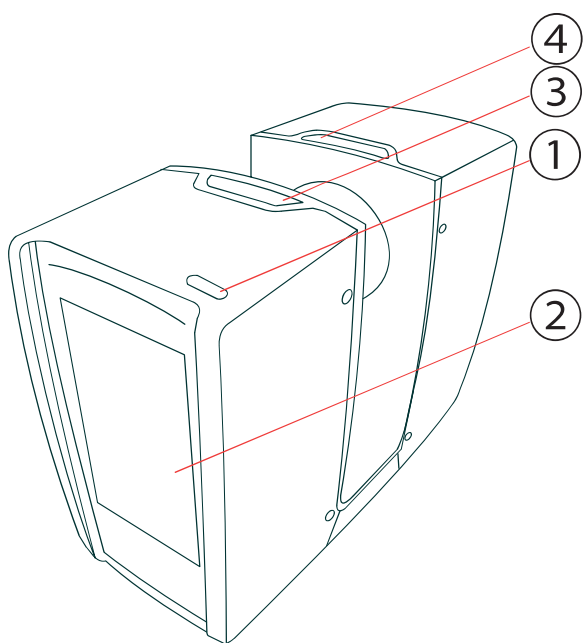


Figure 1-2

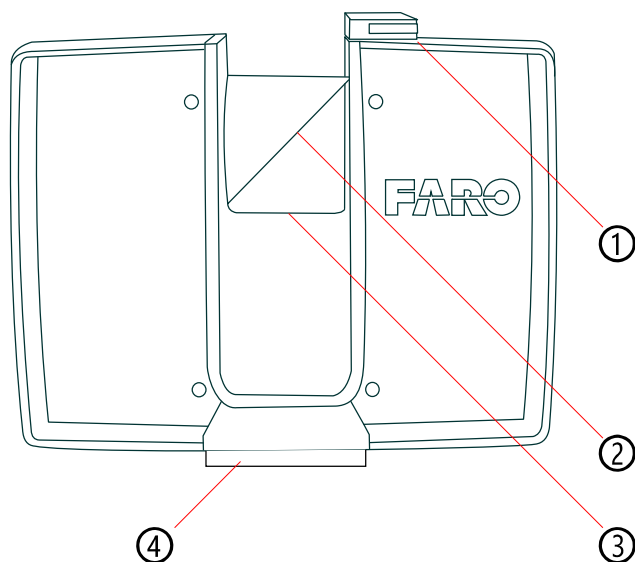


Figure 1-4

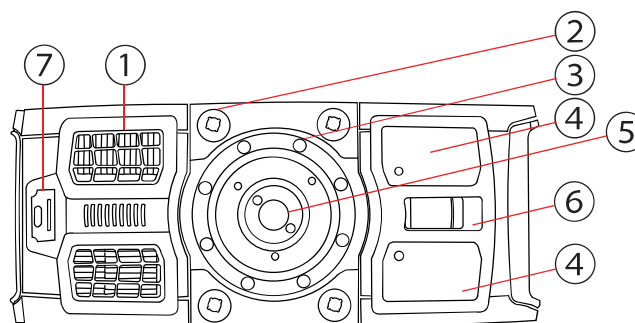


Figure 1-5

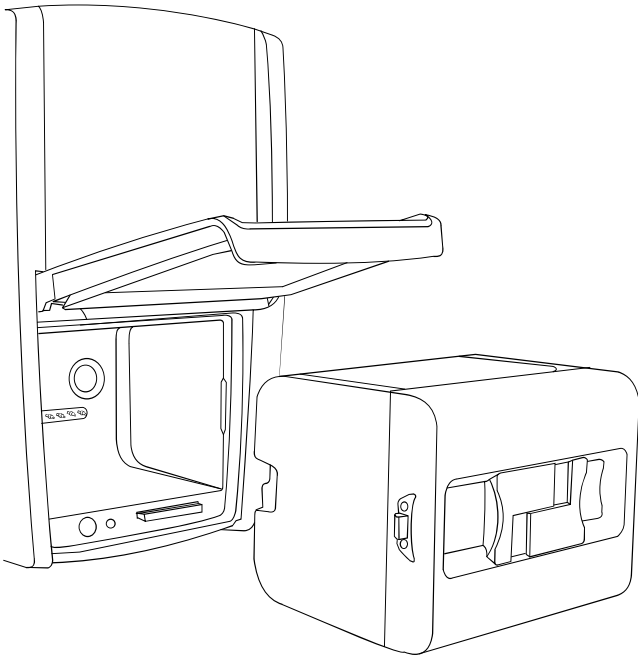


Figure 1-6

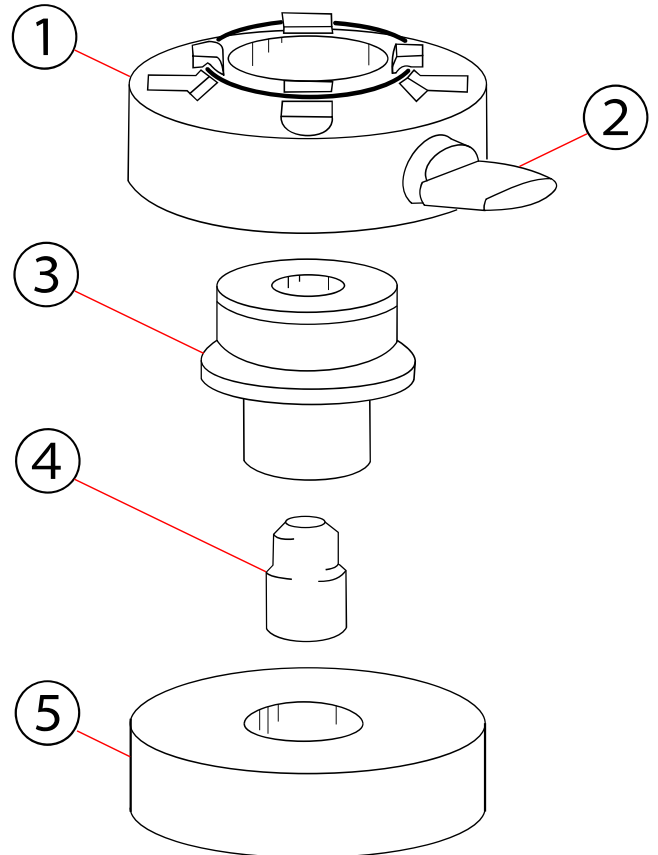


Figure 1-8

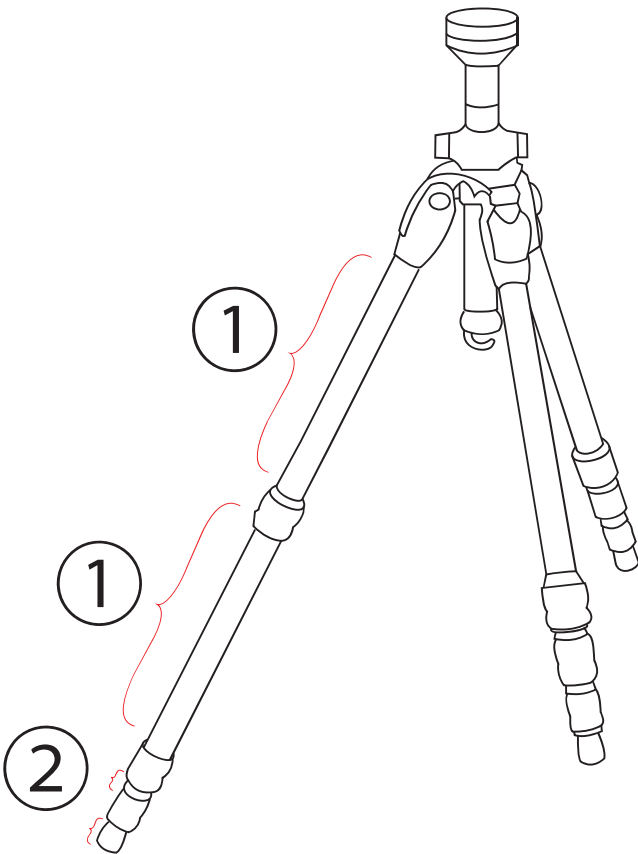


Figure 1-7

English

Legal Notices

Release Notice

This is the March 2022 version of the Focus Premium Laser Scanner Safety Manual. It applies to the FARO Focus Premium Scanner. FARO® Technologies Inc., March 2022. All rights reserved.

No part of this publication may be reproduced, or transmitted in any form or by any means without written permission of FARO Technologies, Inc.

FARO TECHNOLOGIES, INC. MAKES NO WARRANTY, EITHER EXPRESS OR IMPLIED, INCLUDING BUT NOT LIMITED TO ANY IMPLIED WARRANTIES OF MERCHANTABILITY OR FITNESS FOR A PARTICULAR PURPOSE, REGARDING THE FARO LASER SCANNER, FARO SCANPLAN, FARO FREESTYLE 2 AND ANY MATERIALS, AND MAKES SUCH MATERIALS AVAILABLE SOLELY ON AN "AS-IS" BASIS.

IN NO EVENT SHALL FARO TECHNOLOGIES INC. BE LIABLE TO ANYONE FOR SPECIAL, COLLATERAL, INCIDENTAL, OR CONSEQUENTIAL DAMAGES IN CONNECTION WITH OR ARISING OUT OF THE PURCHASE OR USE OF THE FARO LASER SCANNER, FARO SCANPLAN, FARO FREESTYLE 2 OR THEIR MATERIALS. THE SOLE AND EXCLUSIVE LIABILITY TO FARO TECHNOLOGIES, INC., REGARDLESS OF THE FORM OF ACTION, SHALL NOT EXCEED THE PURCHASE PRICE OF THE MATERIALS DESCRIBED HEREIN.

THE INFORMATION CONTAINED IN THIS MANUAL IS SUBJECT TO CHANGE WITHOUT NOTICE AND DOES NOT REPRESENT A COMMITMENT ON THE PART OF FARO TECHNOLOGIES INC. ACCEPTANCE OF THIS DOCUMENT BY THE CUSTOMER CONSTITUTES ACKNOWLEDGMENT THAT IF ANY INCONSISTENCY EXISTS BETWEEN THE ENGLISH AND NON-ENGLISH VERSIONS, THE ENGLISH VERSION TAKES PRECEDENCE.

Copyright Notice

© Copyright 2022 FARO Technologies Inc..

This product includes third-party and open source resources. For license and copyright information pertaining to the use of these resources, refer to the following document in the FARO Knowledge Base: https://knowledge.faro.com/Essentials/General/3rd-Party_Open_Source_License_Information_for_FARO_Products

Introduction

The FARO Focus Premium is a high-speed three-dimensional laser scanner for detailed measurement and documentation. The FARO Focus Premium uses laser technology to produce very detailed three-dimensional images of complex environments and geometries in minutes. The resulting images consist of millions of 3D measurement points.

The scanner (see Figure 1-1 on page i) is designed to scan objects at distances between 0.5 meters and approximately 150 or 350 meters.

Safety Precautions

Read this safety manual carefully and completely. Refer to it before using the product. Pay careful attention to all warnings, and follow the instructions step-by-step. See also the complete Faro Premium Laser Scanner User Manual, available at <https://knowledge.faro.com/Hardware>.



Improper Use

Improper use means using the product other than described in this user manual, or under operating conditions that differ from those described herein.

Improper use of the product can impair the protection provided by the product, and product damage or serious personal injury can occur.

General Safety Information

CAUTION:

- Do not open the housing. Opening the housing can result in serious personal injury due to dangerously high voltages, or damage to the product, which will affect the product's warranty.
- Do not use parts not supplied or recommended by FARO.
- Only replacement parts authorized by FARO may be used, and in accordance with the instructions provided by FARO.
- Do not expose the FARO Focus Premium and its accessories to **extreme temperatures**. The ambient temperature must not be lower or higher than given in the specifications. Do not use the FARO Focus Premium near heat sources, such as radiators, heat registers, or other heat-producing products (including amplifiers).
- Do not **immerse** the FARO Focus Premium and its accessories in **water**. Liquid inside the product enclosure can lead to damage, fire, or electric shocks.
- Properly dispose of the product and batteries in accordance to the local and national regulations. For more information, see *Disposal* on page 7.
- Do not use the FARO Focus Premium and its accessories in an **explosive environment**. Do not operate the instrument in the presence of flammable gases or fumes. Operation of any electrical instrument in such an environment constitutes a safety hazard.
- Do not use the FARO Focus Premium in the vicinity of strong **magnetic or electrical fields**.
- Before operating the FARO Focus Premium and its accessories in **hazardous areas**, contact the local safety authorities and safety experts.
- For **outdoor use**, use the Power Block battery as the power supply, ensuring that the device is protected from rain or spray water. Use the scanner in a non-condensing environment.
- When the product is transferred from a cold to a significantly warmer environment, water may condense on some elements inside the scanner. To avoid this, place the scanner in an airtight plastic bag before transfer. This allows the condensation to form on the bag rather than inside the scanner. If you cannot pack the scanner in an airtight manner, wait until observable **condensation water** evaporates from the scanner before switching the FARO Focus Premium on.

DANGER: Do not operate the scanner while the external power supply is plugged in. The power cable might damage the turning scanner.

Laser Safety

- The FARO Focus Premium laser scanner is classified as a **CLASS 1 LASER PRODUCT** in accordance with IEC 60825-

1:2014 (ed. 3).

- Complies with 21 CFR 1040.10 and 1040.11 except for conformance with IEC 60825-1 Ed. 3., as described in Laser Notice No. 56, dated May 8, 2019.
- The FARO Focus Premium laser scanner is safe under reasonably foreseeable conditions of operation. The maximum permissible exposure (MPE) cannot be exceeded. It is harmless to the eyes if it is used and maintained in accordance with the instructions in this user manual.

Electrical Safety

WARNING: Do not open the housing. Dangerously high voltages are present inside the enclosure. Only qualified service personnel should open the housing. Never push objects of any kind into this product through openings, as they may touch dangerous voltage points or cause short circuits. This could result in a fire, electric shock, or damage to the product.

NOTICE: This device is not intended for use in residential environments, and it cannot ensure a suitable degree of protection of radio reception in such environments.

- This product should be operated only from the power source or a battery supplied or recommended by FARO. Ensure that the specifications of the AC converter are met. If you do not know the power-line voltage in your area, consult your local power company.
- To avoid electrical shock, use the power-supply unit in dry indoor environments only.

Power Block Battery Safety Measures

These safety measures must be followed, when working with the Power Block battery:

- Only use the charger recommended by FARO to charge the battery.
- Do not charge or discharge damaged batteries.
- Do not charge the battery in the FARO Focus Premium while it is stored in the transport case.
- Do not use wet or dirty batteries in the FARO Focus Premium or with the charger.
- Charge between 0 °C and +45 °C (+32 °F and +113 °F) environmental temperature. Recommended charging temperatures: +10 °C to +30 °C (50 °F to +86 °F).
- Discharge between -20 °C and +60 °C (-4 °F and +140 °F) environmental temperature. Recommended operating temperatures: +5 °C to +40 °C (+41 °F to +104 °F).
- Insert or remove batteries from the laser scanner in dry, dust-free environments only.
- When the FARO Focus Premium is not in use for long periods of time, remove the battery.
- Store the battery only when it is charged (at least 60% charge state). We recommend charging the battery once a year while it is in long-term storage.
- Storage temperatures are -20 °C to +40 °C (-4 °F to +104 °F). Storage humidity range is 0% to 80%. Store in a well-ventilated area. Do not store with metal objects. A short circuit can cause a fire.
- Do not bring metal objects into contact with the batteries' terminals. The terminals may short-circuit and generate heat.
- Do not immerse batteries into water or fire (danger of explosion).
- Dispose of batteries in accordance with environmental regulations. Contact your local waste disposal management authority for guidelines concerning lithium-ion batteries.

Mechanical Safety

WARNING: Rotating Mirror The mirror unit rotates with high speed while scanning and for a short period after the scan. While the mirror is rotating keep distance to the product and do not touch

the rotating mirror unit with your hands, fingers or any objects at the risk of personal injury and damage to the FARO Focus Premium.

CAUTION: General Use The FARO Focus Premium may only be used when set on a flat and stable surface. Injuries may result if the FARO Focus Premium overturns. Only use equipment recommended by FARO, and follow the setup instructions in this manual or the equipment manufacturer's manual.

CAUTION: Do Not Open the Housing Opening the housing can cause serious personal injury and damage to the product.

NOTICE: Rotating Scanner The FARO Focus Premium rotates clockwise up to 360° when performing a scan. Ensure that the FARO Focus Premium's scanner head can rotate freely and will not hit any objects during the scan.

NOTICE: Replacement Parts Use only replacement parts authorized by FARO according to the instructions obtained from FARO. Do not use parts not supplied or recommended by FARO.

Transport

The following precautions must be taken when transporting the laser scanner equipment:

- The laser scanner must be turned off during transportation or shipping.
- The laser scanner must be in a transport case.
- Remove the battery from the laser scanner before shipping.
- When carrying the laser scanner, be careful not to drop it. Strong impact can damage the laser scanner, and render it incapable of proper operation.
- Carry the laser scanner separately from its equipment or, for optimal protection, use the original transport case.
- When shipping and transporting the laser scanner by rail, sea, air, or road, use its original transport case and a suitable outer cardboard box for optimal protection against shock and vibration.
- The FARO batteries are lithium-ion batteries and are thus classified as dangerous goods. When transporting or shipping the FARO batteries, ensure that you observe all applicable local and international rules and regulations. For further information, contact your local carrier before transportation or shipping.

Storage

Prior to storing the laser scanner for prolonged periods:

- Remove the battery.
- Pack the scanner and the battery in its shipping case to protect it from environmental hazards, dust, and dirt.
- Store all components in an environment where:
 - The humidity level is low
 - The temperature is relatively stable
 - The components are not be subjected to extreme temperatures, environmental conditions, or heavy vibrations

Servicing

Servicing and repair must only be done by qualified service personnel authorized by FARO. Unplug the product from the power outlet and remove the battery. Request servicing, then deliver it to qualified service personnel under the following conditions, if:

- the power-supply cord or plug is damaged.
- the product has been exposed to rain, water, or other liquids.
- the product has been dropped or damaged in any way.
- objects have fallen onto the product.
- the product does not operate normally when following the operating instructions.
- the product exhibits a distinct change in performance.
- the required service and calibration date is reached.

Nameplate symbols



Indicates conformity with health, safety, and environmental protection standards for products sold within the European Economic Area.



Indicates that the product should not be discarded as unsorted waste but must be sent to separate collection facilities for recovery and recycling.



Indicates that the battery should be recycled in an environmentally suitable way.



Indicates that the battery should neither be incinerated nor set on fire.



Indicates that documentation is provided and required to use the product.



Indicates that there are no user serviceable parts inside the housing.



The nameplate on your FARO device may contain this symbol. It indicates that FARO has provided important information in the user manual regarding intended use and safety. Read this information before using the device.



Indicates that the product contains components with the Recognized Component Mark, which is a type of quality mark issued by Underwriters Laboratories (UL).



Indicates that the device is for indoor use only.

Parts and Their Functions

Display Side

(See Figure 1-2 on page i.)

- ① **Power On/Off button** - Press to turn on the FARO Focus Premium. If the scanner is on and running, press again to turn it off. Pressing and holding for more than 3 seconds switches the FARO Focus Premium off without shutting it down. Use only in exceptional cases, such as if the shut-down mechanism does not work or the FARO Focus Premium is non-responsive.

- ② **Touch-screen display**

- ③ **Accessory bay 1**

- ④ **Accessory bay 2**

NOTE: Ensure that the contacts in the accessory bay are clean before using. If not, clean with a cotton swab soaked in isopropyl alcohol.

Battery Side

(See Figure 1-3 on page i.)

- ① **Battery compartment cover**
- ② **Socket to plug-in the external power supply (FSP090-ABCN3)**
- ③ **LED showing battery status**
- ④ **SD card slot**

Front Side

(See Figure 1-4 on page i.)

- ① **Status Indicator**

- ② **Scanner mirror** - For safety and cleaning instructions, refer to the Maintenance chapter of the user manual.

- ③ **Reference area** - Used for self-referencing the distance measurements while scanning.

- ④ **Scanner mount**

Bottom Side

(See Figure 1-5 on page i.)

- ① **Cooling fan openings** - Keep these openings uncovered and at least 18 cm (7 in) from the floor or any other surface.
- ② **M5 screw threads** - To mount the scanner to customer-specific fixtures.
- ③ **Cover of the scanner base interface** - For automated applications. Remove to access the FARO Focus Premium's automation interface. For more information, read the FARO Focus automation interface manual. Cover the automation interface if it is not needed or not in-use.
- ④ **Type label**
- ⑤ **3/8" screw thread** - To mount the scanner to standard photo tripods.
- ⑥ **Battery compartment cover release mechanism**
- ⑦ **USB-C port (cover not shown)**

NOTE: The scanner base interface is not available on all scanner models.

NOTICE: Do not plug any type of charger into this connector. Only USB devices or LAN adapters may be attached.

Getting Started

This chapter provides preliminary steps and basic FARO Focus Premium operation instructions, as well as guiding you step-by-step from setting up the FARO Focus Premium to recording your first scan.

Charging the Battery

The Power Block battery (ACCS-PWR-0014) can be charged in the FARO Focus Premium or in the FARO Power Dock battery charger (ACCS-PWR-0013).

As a safety precaution, new batteries are shipped with a charge of less than 30%. New batteries must be completely charged before first use. We recommend fully charging the battery before each use. Keep a spare battery, if necessary, during your scan project.

DANGER: Danger of explosion or fire Do not immerse batteries in water or fire. Do not bring metal objects into contact with the battery terminals. The terminals may short-circuit and over-heat.

DANGER: Danger of fire or electric shocks Ensure that the devices are protected from rain or spraying water. The power-supply unit and the Power Dock battery charger are not intended for outdoor use.

The power-supply unit can be used in various countries. It is compatible with a 100 V AC to 240 V AC 50/60 Hz power source. Use a voltage adapter, if necessary.

Charging the Battery in the FARO Focus Premium

(See Figure 1-6 on page i.)

NOTICE: You cannot use older versions of the battery (versions that were used for the Focus S, M and S+ scanners) with the Focus Premium scanner. These batteries do not provide enough current to power the Focus Premium. Use only version ACCS-PWR-0014 of

the battery. The scanner will warn you if you try to start it using an older battery.

1. Open the scanner's battery compartment cover.
2. Turn the battery so that its type label is directed upwards.
3. Point the battery contacts toward the scanner.
4. Push the battery straight in, sliding it downward into the battery compartment until the fastener clicks into position.
5. Connect the cable of the power-supply unit to the power socket of the FARO Focus Premium.

NOTICE: If you use force while inserting the plug in a wrong direction, the plug and the FARO Focus Premium can be damaged.

6. Connect the AC power cable to the power-supply unit and a power outlet. Check the input voltage on the type label before connecting.
7. If the FARO Focus Premium is turned off, the scanner LEDs start blinking blue while charging. The LEDs stop blinking and illuminate a constant green, when the battery is fully charged.
8. If the FARO Focus Premium is turned on, check the battery's charging state in the scanner's user interface under **Manage > General Settings > Power Management**.
9. When charging is finished, remove the power-supply unit's cable. Close the battery compartment cover.

NOTICE: Do not operate the scanner while the external power-supply is plugged in, because the power cable might damage the turning scanner.

The FARO Focus Premium does not need to be switched on to charge the battery.

NOTE: Remove FARO Focus Premium from the transport case before connecting the power-supply to the scanner. Before prolonged storage, remove the power-supply unit and the battery.

Setting up the FARO Focus Premium

WARNING: Danger of injuries, especially to children or kneeling persons

Injuries may result, if the FARO Focus Premium overturns.

- The FARO Focus Premium may only be used on a flat, stable surface.

- In windy conditions, use sandbags to stabilize each foot of the tripod. You can also place a weight on the ground under the tripod, then stretch a rope or shock cord between the tripod's center hook and the weight.

Setting up the Tripod

For optimal performance, the base on which the scanner rests must be *absolutely* motionless. Any vibration or oscillation in the tripod or the ground on which the tripod stands can reduce the accuracy of the scan, and can lead to fringed or ghost lines.

Use a high-quality tripod. FARO recommends the GITZO ACCSS8032, available only from your FARO sales representative.

NOTICE: When adjusting the height of the tripod, assure that the scanner is NOT mounted. During leg adjustment, the tripod may become temporarily unstable, and could tip over, causing damage to the scanner.

While Working with the Laser Scanner

- Due to long recording times and high data-quality requirements, you must ensure that the tripod is as stable as possible.
- Because a laser scanner moves during operation, the tripod must always be as rigid as possible.

To Achieve Stability and Rigidity

- Extend the tripod as little as possible. Less height means more accuracy.

- Extend the thicker segments of the legs before the thinner.
- You can extend a leg segment partially, if necessary, to achieve a specific height, but do not partially extend several segments of the same leg.
- The tripod has four leg segments. Fully extend the top two ①, leaving the fourth and third sections collapsed ②. This results in a working height of approximately 130 cm (51.2 in). (See Figure 1-7 on page ii.)
- The tripod is equipped with large, adjustable rubber feet. Each time you move the tripod, ensure that the feet are correctly resting on the ground. If you need to place the tripod on unstable ground (e.g., grass, gravel, mud), use the supplied spikes instead of the rubber feet. Press the spikes individually into the ground until they reach a stable, load-bearing layer.
- After you set the tripod on the ground, check the leg latches. If any latches are loose, spread the legs slightly until the latches cannot be wiggled. This ensures that the tripod is firmly planted on the ground, and unlikely to shake or vibrate during scanning.
- The use of the center column significantly reduces the rigidity of the tripod. We recommend that you avoid using the center column. If you need higher working heights, we recommend using a larger tripod. Make sure that a such a tripod is also stable.
- For scans close to the ground, slide all leg segments into each other before setting the leg angle to flat. The rubber feet have a recess that helps to achieve full-surface contact, even with a flat leg angle. To do this, turn the feet individually by hand.
- Ensure that the twist-lock sleeves for leg length adjustment, the central wing nut of the tripod shoulder, and the tripod head are always tightly screwed together.
- To achieve a better grip on hard surfaces, slightly tension the tripod legs before starting a scan. Tension the legs by holding two of the three tripod legs as close to the ground as possible with your hands, pulling them slightly apart from each other and away from the third leg, then pressing them into the ground.
- Under windy conditions, use sandbags to stabilize each foot of the tripod. You can also stretch a rope or shock cord between the tripod's center hook and a weight, switchable magnetic base, or existing anchor point.

Inverting the scanner

The scanner can be mounted upside-down. In an inverted position, the scanner's documented IP rating is no longer valid, so take care to prevent water from dripping on the scanner.

- Ensure that no person is underneath the scanner during setup and operation.
- The setup you create to hold the scanner should be able to support at least 5 kg (11 lbs.).
- Use a tripod only if it is suitable for inverted installations (the ACCSS8032 tripod is not suitable).
- The setup must be as rigid as possible and must prevent vibrations and oscillations.
- Ensure that the scanner can not loosen or fall from your setup.
- Ensure that the scanner can rotate without touching anything.
- Keep the cooling fan openings uncovered and at least 18 cm (7 in) from any surface.

Mounting and Using the Quick Release

The quick release enables you to quickly and safely attach and remove the scanner from the tripod. The quick release consists of these parts:

(See Figure 1-8 on page ii.)

- ① Scanner plate ② Fixation screw ③ Center spindle
- ④ Spindle screw ⑤ Tripod plate

Prepare the Tripod

1. Extend the tripod legs and place the tripod on a stable surface at a convenient height. Ensure that all legs of the tripod are secure.
2. Your tripod might be equipped with one or more set screws in the platform. Ensure that the set screws are recessed below the platform. They must not stick up out of the surface.
3. Place the tripod plate over the center screw of the tripod.
4. Ensure that the spindle screw is firmly screwed into the narrow side of the center spindle.
5. Screw the center spindle firmly onto the tripod.

Prepare the Scanner

1. Place the scanner upside down on a stable, flat surface. Use the included mirror protection foam to protect the mirror from dirt, dust, or falling objects.
2. Place the scanner plate onto the base of the scanner. Ensure that it slides into the circular depression surrounding the center thread.
3. Use a 4 mm hex key to tighten the four screws, so that the scanner plate is firmly attached to the scanner. Do not over-tighten.
4. Extend the tripod legs and place the tripod on a stable surface at a convenient height. Ensure that all legs of the tripod are secure.

Use the Quick Release

1. Ensure that the tripod is level and the tripod plate is firmly attached to the tripod. Tighten manually, if necessary.
2. Ensure that the fixation screw in the scanner plate is unscrewed, so that it won't block the scanner plate from sliding over the center spindle.
3. Holding the scanner from both sides, slide the scanner plate over the center spindle.
4. Manually tighten the fixation screw until the scanner plate is firmly attached to the center spindle.

You can now use the scanner.

To remove the scanner, loosen the fixation screw and lift the scanner from the center spindle.

Maintenance

We recommend that you check your FARO Focus Premium at least once a month. This allows you to spot trouble before it starts, and provides you with an efficient measuring system.

The FARO Focus Premium is a precision instrument that contains many sensitive components, and thus must be handled with care. Follow these procedures to prevent problems:

- Check the cables for damage to outside insulation, connectors, and pins.
- Check the housing of the scanner for damage.
- Check the housing and the connectors of the battery for damage.
- Place a dust cover over the scanner, when not in use.
- Do not lubricate the FARO Focus Premium.
- Clean the mirror if it becomes dirty. Refer to the user manual for mirror cleaning instructions.

To ensure proper functioning of the scanner, it should be checked by FARO customer service on a regular basis within the yearly maintenance and certification service. The service intervals should not exceed one year. Contact your local FARO Customer Service team for more information.

WARNING: Hand injuries due to spinning mirror

If the scanner is accidentally switched on, the mirrors may start to turn. Before starting any cleaning activity:

- shut-down the laser scanner module and remove the battery pack.
- if using an external power supply, remove the power line.

This will prevent the mirror from turning during the cleaning.

Technical Data

General

Power supply voltage	19 V, DC (external supply) 14.4 V, DC (internal battery) Input voltage to power supply: 100/240 V +/- 10%.
Power consumption	19 W (when device is idle) 32 W (while scanning) 72 W (while battery charges)
Battery operation time	about 4 hours
Operating temperature	+5 °C to +40 °C (+41 °F to +104 °F)
Cable connector	Located under the battery cover.
Weight (with battery)	4.4 kg (9.7 lbs)
Size	230 x 283 x 103 mm (9.04 x 11.15 x 5.06 in)
Recommended maintenance / calibration	Annual

Ports

Accessory bay 1 (red)	Rating voltage: 19 V, DC Power: max. 6.65 W
Accessory bay 2 (black)	Rating voltage: 5 V, DC Power: max. 5 W
USB C port (bottom side). Supports USB 3	Rating voltage: 5 V, DC Power: max. 7.5 W

Laser (Optical Transmitter)

Laser class	Laser class 1
Wavelength	1553.5 nm
Pulse duration	approx. 4 ns
Repetition rate	approx. 125 MHz
Optical power	approx. 800 mW
Beam divergence	Typical 0.3 mrad (0.024°)(1/e)
Beam diameter at exit	Typical 2.12 mm (1/e)

Multi-Sensor

Dual axis compensator:	Levels each scan: 19 arcsec; Range ±2°
Height sensor:	Via an electronic barometer the height relative to a fixed point can be detected and added to a scan.
Compass*:	The electronic compass gives the scan an orientation.
GNSS:	Integrated GPS & GLONASS

*Ferromagnetic objects and electromagnetic fields can disturb the earth magnetic field. This, as well as local variations in earth

magnetic field (magnetic declination or variation), can lead to inaccurate measurements.

Ambient Conditions

Ambient Temperature:	+5 °C to +40 °C (+41 °F to +104 °F)
Extended operating temperature of the scanner:	-20 °C to +55 °C (-4 °F to +131 °F) Low temperature operation: the scanner must be powered on while internal temperature is at or above +15 °C (59 °F) High temperature operation*: additional accessory thermal cover required, further information on request.
Storage	-10 °C to +60 °C (+14 °F to +140 °F)
Environment:	indoor and temporarily outdoor use, pollution degree 2
Humidity:	Non-condensing
Altitude:	< 2000 m (6561 ft)
IP rating of the scanner when in an upright position:	IP54

*For extended operation at 55 °C: Cool down the accessory thermal cover to at least -15 °C and store the scanner below 25 °C. Prepare scanner with thermal cover and without any other accessory. Turn it on. Scanning is possible for 1 hour. Then cool down the scanner to below 25 °C for 2 hours before scanning again with a cooled thermal cover.

Disposal

At the end of its life-cycle, this product must not be disposed with normal waste, but instead must be returned to a recycling facility for electric and electronic devices.

Contact your local government or local waste disposal operators to ensure you comply with local laws.



Technical Support

FARO Technologies, Inc. is committed to providing the best technical support to our customers. Our Service Policy is detailed under Industrial Service Policy the user manual. If you have any difficulties using one of our products, follow these steps before contacting our Technical Support Team:

- Be sure to read the relevant sections of the documentation.
- Visit the FARO Customer Care area on the Web at www.faro.com to search our technical support database. This is available 24 hours a day 7 days a week.
- Document the problem you are experiencing. Be as specific as you can. The more information you can give us, the easier the issue is to solve.
- If you still cannot resolve your issue, have your device's serial number available before calling.
- Emails or faxes sent outside regular working hours are usually answered before 12:00 noon the next working day. If our staff are on other calls, leave a voice mail. Calls are always returned within 24 hours on business days. Remember to leave a detailed description of your difficulty along with your device's serial number. Do not forget to include your name, fax number, and telephone number with extension, so we can promptly reach you.

Certifications

CE Declaration of Conformity

Hereby, FARO Technologies, Inc. declares that the radio equipment type FARO Focus Premium is in compliance with Directive 2014/53/EU.

The full text of the EU declaration of conformity is available at the following internet address:

<https://www.faro.com/en/Support-Overview/Technical-Documents/Certificates>

FARO Technologies, Inc. is represented in Europe by FARO Europe GmbH, Korntal-Münchingen, Germany.

Frequency	Power
2402 ~ 2480 MHz	11 dBm
2412 ~ 2472 MHz	20 dBm
5150 ~ 5350 MHz	23 dBm
5470 ~ 5725 MHz	23 dBm
13.56 MHz	-2 dBuA/m

SW version: 7.0.0.6861

RF exposure statement

The minimum distance between the user or any bystander and the radiating structure of the transmitter is 20 cm (7.87 in).

5150 ~ 5350 MHz is limited to indoor use in these countries: Belgium, Bulgaria, Czechia, Denmark, Germany, Estonia, Ireland, Greece, Spain, France, Croatia, Italy, Cyprus, Latvia, Lithuania, Luxembourg, Hungary, Malta, Netherlands, Austria, Poland, Portugal, Romania, Slovenia, Slovakia, Finland, Sweden, United Kingdom, Liechtenstein, Iceland, Norway, Turkey, Switzerland

FCC Equipment Authorization

Trade name: FARO

Product Name: Focus Premium

These devices comply with Part 15 of the FCC Rules

Operation is subject to the following conditions:

1. The devices may not cause harmful interference, and
2. The devices must accept any interference received, including interference that may cause undesired operation.

FCC ID: YQMLLS090

NOTE: This equipment has been tested and found to comply with the limits for a Class A digital device, pursuant to part 15 of the FCC Rules. These limits are designed to provide reasonable protection against harmful interference when the equipment is operated in a commercial environment. This equipment generates, uses, and can radiate radio frequency energy and, if not installed and used in accordance with the instruction manual, may cause harmful interference to radio communications. Operation of this equipment in a residential area is not likely to cause harmful interference.

Industry Canada (IC):

This device complies with Industry Canada license-exempt RSS standard(s). Operation is subject to the following two conditions:

- (1) This device may not cause interference.
- (2) This device must accept any interference, including interference that may cause undesired operation of the device.

Le présent appareil est conforme aux CNR d'Industrie Canada applicables aux appareils radio exempts de licence. L'exploitation est autorisée aux deux conditions suivantes:

- (1) l'appareil ne doit pas produire de brouillage, et
- (2) l'utilisateur de l'appareil doit accepter tout brouillage radioélectrique subi, même si le brouillage est susceptible d'en compromettre le fonctionnement.

IC ID: 9265A-LLS090

FARO Technologies, Inc.

250 Technology Park
Lake Mary, FL 32746
800-736-2771 U.S. / +1 407-333-3182 Worldwide
Email: support@faro.com

FARO Brazil

Rua San José, 360
Cotia, SP 06715-862
Phone: 0800-047-4271 / +55 11 3500-4600
Email: suporte@faro.com

FARO Europe GmbH

Lingwiesenstrasse 11/2 D-70825
Korntal-Münchingen, Germany
FREECALL +800 3276 73 78 / +49 7150/9797-400
FREEFAX +800 3276 1737 / +49 7150/9797-9400
Email: support.emea@faro.com

FARO Singapore Pte. Ltd.

No. 03 Changi South Street 2
#01-01 Xilin Districentre Building B
SINGAPORE 486548
TEL: +65 6511.1350
Email: supportap@faro.com

FARO Japan,c.

716 Kumada, Nagakute-City,
Aichi, 480-1144, Japan
Tel: 0120-922-927, 0561-63-1411
FAX:0561-63-1412
Email: supportjapan@faro.com

FARO (Shanghai) Co., Ltd.

1/F, Building No. 2,
Jux Information Technology Park
188 Pingfu Road, Xuhui District
Shanghai 200231, China
Tel.: 400.677.6826
Email: supportchina@faro.com

FARO Business Technologies India Pvt. Ltd.

E-12, B-1 Extension,
Mohan Cooperative Industria Estate,
New Delhi-110044, India
Tel.: 1800.1028456
Email: supportindia@faro.com