

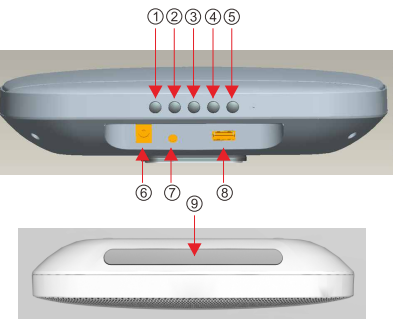
The Best Wall Sound

User Guide Manual



Patented product,counterfeiting.
Before use of the speaker, please read user guide manual carefully.
The product pictures are only for reference, please refer to actual item.

Function Operation Introduction



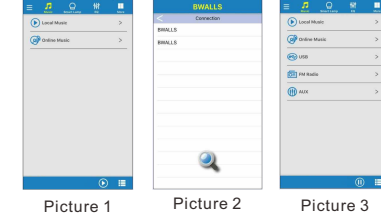
- ① **Function Key:**
Short press the key to shift bluetooth,FM radio,USB & the sound source devices already connected with the speaker.
- ② **Previous:**
When play music via bluetooth & USB, short press to previous song. In the status of FM, short press the key to previous.
- ③ **Play/Pause:**
In the status of playing music, short press the key to pause or resume to play, in the mode of AUX, short press to muse, in the mode of bluetooth ,long press to disconnect and wait for pairing.
- ④ **Next Song:**
In the mode of bluetooth,USB, short press it to next song. In the mode of FM radio, long press it to increase volume.
- ⑤ **Nightlights**
Short press it to adjust its brightness (three level adjustment).Long press it to switch off the nightlights.
- ⑥ **Power input interface, this interface just supports the 6 volta ge adapter matched with this product.**
- ⑦ **AUX IN**
- ⑧ **USB (optional).**
- ⑨ **Nightlights window**

APP Function Operation Guide

1. **Installation & connection of APP**
a. To download "bwalls" APP to smart phone and install it from APPLE APP store. After finishing the installation, The smartphone will show as the following picture:



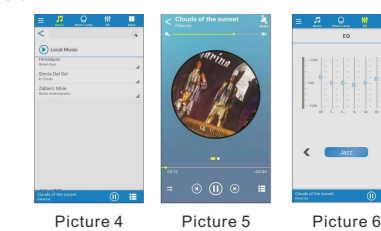
- b. First, please open the bluetooth of smartphone,then searching for the speaker bluetooth name "bwalls" to connect. After connection, run the installed APP, enter into functions of APP(Picture 1).Then,click the upper left corner to connect the device, to check the bluetooth data has been connected or not connected data shows as picture 2, on the right, it will mark "v". Android APP will connect bluetooth data automatically, For IOS version APP, need to connect by hand.



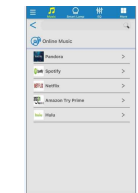
- c. After connection, APP will show like picture 3, at this time, you can control the relative functions of the speaker.

2. APP function operation

- a. **Local Music**
Click "Local Music" to play music in the smartphone (picture 4), then choose any song to enter into (Picture 5) interface to control every function; Click the upper "Sound Effect" to enter into Picture 6 interface to adjust sound effects accordingly (This function also can work in the status of other sound source).

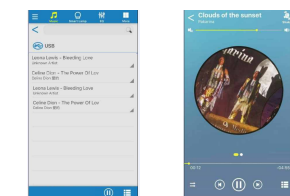


- b. **Listen to music on the line**
To ensure that your smartphone are connecting with internet to play & listen to the music on the line, play on the line as the followings: (picture 7).



Picture 7

- c. **USB play**
Insert the USB disk which saved songs to play music. Click USB, The speaker will prompt the USB has been inserted in, Relative USB control interfaces are as followings: (picture 8, Picture 9).

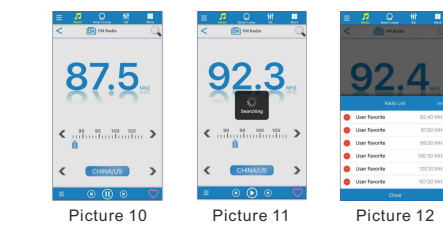


Picture 8

Picture 9

Note: USB is just for playing music, not to be used as charging interface to avoid damaged or other problems.

- d. **FM Radio**
Click FM radio to enter "FM" into FM radio interface as picture 10, the relative interfaces are as picture 11, Picture 12. Click the upper right corner " " to search for radio stations automatically; Click the lower left corner " " to check and choose the saved stations list; It can choose some countries' FM frequency.

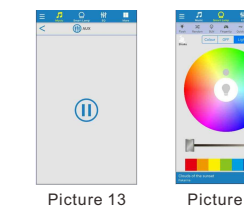


Picture 10

Picture 11

Picture 12

- e. **AUX IN Play**
When you insert Aux in cable into the speaker, APP will shift to AUX interface (picture 13), The speaker will give warning tone of AUX_In. At the same time, you can hear the sweet music from outside device. Click " " to stop music playing.



Picture 13

Picture 14

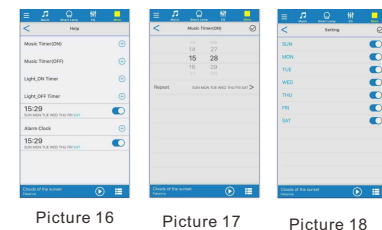
- f. **Functions of nightlights**
To click the upper " " Icon to control night lights (Picture 14), BWALLS just has nightlights, off, light and the lower " " brightness adjustment functions.

- g. **More**
Enter into more function to click the upper right " " Icon (Picture 15).



Picture 15

- h. **Help**
Click "Help" to enter into the interface, Click "+" to add the starting and ending time and date that you want to set up. Once the function is set up, even smartphone is switched off, it still can work, the relative interfaces: (Picture 18, Picture 19, Picture 20, Picture 21).

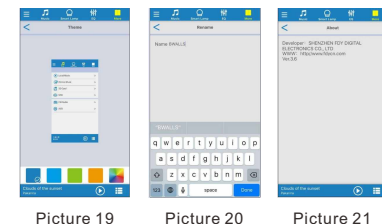


Picture 16

Picture 17

Picture 18

- i. **Theme Colour**
Click "Theme Colour" to choose the colors of background you like (Picture 19).



Picture 19

Picture 20

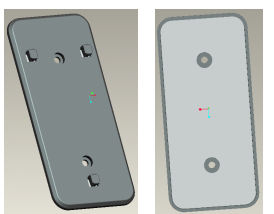
Picture 21

- j. **Rename**
Click "Rename" to compile device name (Picture 20).

- k. **About**
Click "About" to show APP version (Picture 21).

Installation Introduction

- a. **Installation of baseplate**
If the wall is smooth and strong enough, it can be pasted on the wall or the glass directly by the 3M adhesive tape, if not, we suggest to use the screws to ensure it fixed.



Wall mounted baseplate 3M adhesive tape

- b. **Installation of the speaker**
Insert the speaker into the fixed baseplate then pull down the speaker to ensure it fixed tightly.

Note: 1. When the speaker is on the wall, to insert USB or AUX in cable, we suggest that you had better use one hand to buttress the speaker because the upper power will cause the speaker off the baseplate and damage the speaker.
2. If you need to discharge the baseplate pasted on the wall by 3M adhesive tape, to avoid damage of the wall, we suggest you use alcohol to water the tape slowly then tear the tape lightly.

Technical specification

1. Output power: 3W x 4
2. Speaker: Ø40mm x 4+(46mm*86mm) x 2
3. Frequency response: 80-18kHz
4. S/N Ratio: ≥85dB
5. Distortion degree: 1%
6. LED colour temperature: 2850K
7. Product size: 220x220x50mm (LxWxD)

Accessories

1. Adapter X1
2. User Guide Manual X1
3. Wall-mounted baseplate X1 (3M adhesive tape x2)
4. Screws X2

FCC WARNING: This equipment may generate or use radio frequency energy. Changes or modifications to this equipment may cause harmful interference unless the modifications are expressly approved in the instruction manual. The user could lose the authority to operate this equipment if an unauthorized change or modification is made.
This device complies with part 15 of the FCC Rules. Operation is subject to the following two conditions: (1) This device may not cause harmful interference, and (2) this device must accept any interference received, including interference that may cause undesired operation.

NOTE: This equipment has been tested and found to comply with the limits for a Class B digital device, pursuant to part 15 of the FCC Rules. These limits are designed to provide reasonable protection against harmful interference in a residential installation. This equipment generates, uses and can radiate radio frequency energy and, if not installed and used in accordance with the instructions, may cause harmful interference to radio communications. However, there is no guarantee that interference will not occur in a particular installation. If this equipment does cause harmful interference to radio or television reception, which can be determined by turning the equipment off and on, the user is encouraged to try to correct the interference by one or more of the following measures:
• Reorient or relocate the receiving antenna.
• Increase the separation between the equipment and receiver.
• Connect the equipment into an outlet on a circuit different from that to which the receiver is connected.
• Consult the dealer or an experienced radio/TV technician for help.
• The rating information is located at the bottom of the unit.

INDUSTRY CANADA NOTICE:
This device complies with Industry Canada licence-exempt RSS standard(s).
Operation is subject to the following two conditions: (1) This device may not cause interference, and (2) This device must accept any interference, including interference that may cause undesired operation of the device.
This equipment should be installed and operated with a minimum distance of 20 cm between the radiator and your body.