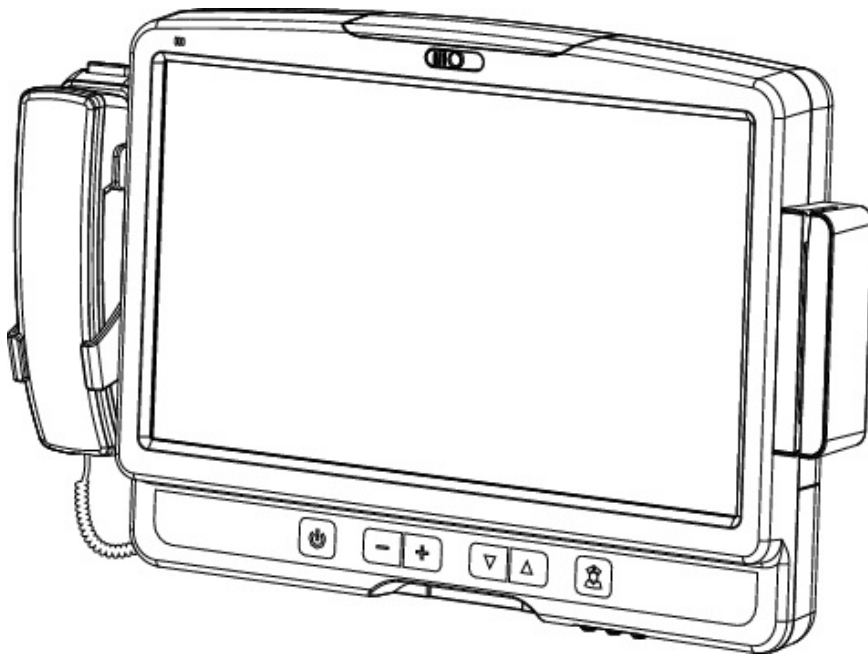


# User Manual

Version 1.0 June 2011

## *Bedside Terminal Hardware System*



Copyright 2011 June  
All Rights Reserved  
Manual Version 1.0  
Part Number: 3LMKK9360110

The information contained in this document is subject to change without notice. We make no warranty of any kind with regard to this material, including, but not limited to, the implied warranties of merchantability and fitness for a particular purpose. We shall not be liable for errors contained herein or for incidental or consequential damages in connection with the furnishing, performance, or use of this material.

This document contains proprietary information that is protected by copyright. All rights are reserved. No part of this document may be photocopied, reproduced or translated to another language without the prior written consent of the manufacturer.

## TRADEMARK

Intel®, Pentium® and MMX are registered trademarks of Intel® Corporation. Microsoft® and Windows® are registered trademarks of Microsoft Corporation. Other trademarks mentioned herein are the property of their respective owners.


## Safety

### IMPORTANT SAFETY INSTRUCTIONS

1. To disconnect the machine from the electrical power supply, turn off the power switch and remove the power cord plug from the wall socket. The wall socket must be easily accessible and in close proximity to the machine.
2. Read these instructions carefully. Save these instructions for future reference.
3. Follow all warnings and instructions marked on the product.
4. Do not use this product near water.
5. Do not place this product on an unstable cart, stand, or table. The product may fall, causing serious damage to the product.

6. Slots and openings in the cabinet and the back or bottom are provided for ventilation;to ensure reliable operation of the product and to protect it from overheating. These openings must not be blocked or covered.The openings should never be blocked by placing the product on a bed, sofa, rug, or other similar surface.This product should never be placed near or over a radiator or heat register,or in a built-in installation unless proper ventilation is provided.
7. This product should be operated from the type of power indicated on the marking label.If you are not sure of the type of power available, consult your dealer or local power company.
8. Do not allow anything to rest on the power cord. Do not locate this product where persons will walk on the cord.
9. Never push objects of any kind into this product through cabinet slots as they may touch dangerous voltage points or short out parts that could result in a fire or electric shock. Never spill liquid of any kind on the product.

## CE MARK

 This device complies with the requirements of the EEC directive 2004/108/EC with regard to “Electromagnetic compatibility” and 2006/95/EC “Low Voltage Directive”.

## FCC

This device complies with part 15 of the FCC rules. Operation is subject to the following two conditions:

- (1) This device may not cause harmful interference.
- (2) This device must accept any interference received, including interference that may cause undesired operation.

## UL



This equipment has been tested and found to comply with the limits for a Class B digital device, pursuant to part 15 of the FCC Rules. These limits are designed to provide reasonable protection against harmful interference in a residential installation.

This equipment generates, uses and can radiate radio frequency energy and, if not installed and used in accordance with the instructions, may cause harmful interference to radio communications. However, there is no guarantee that interference will not occur in a particular installation. If this equipment does cause harmful interference to radio or television reception, which can be determined by turning the equipment off and on, the user is encouraged to try to correct the interference by one or more of the following measures:

- Reorient or relocate the receiving antenna.
- Increase the separation between the equipment and receiver.
- Connect the equipment into an outlet on a circuit different from that to which the receiver is connected.
- Consult the dealer or an experienced radio/TV technician for help

## CAUTION ON LITHIUM BATTERIES

There is a danger of explosion if the battery is replaced incorrectly. Replace only with the same or equivalent type recommended by the manufacturer. Discard used batteries according to the manufacturer's instructions.



### Battery Caution

Risk of explosion if battery is replaced by an incorrectly type.

Dispose of used battery according to the local disposal instructions.



### Safety Caution

Note: To comply with IEC60950-1 Clause 2.5 (limited power sources, L.P.S) related legislation, peripherals shall be 4.7.3.2 "Materials for fire enclosure" compliant.

#### 4.7.3.2 Materials for fire enclosures

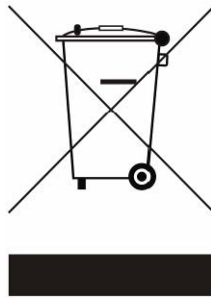
For MOVABLE EQUIPMENT having a total mass not exceeding 18kg, the material of a FIRE ENCLOSURE, in the thinnest significant wall thickness used, shall be of V-1 CLASS MATERIAL or shall pass the test of Clause A.2.

For MOVABLE EQUIPMENT having a total mass exceeding 18kg and for all STATIONARY EQUIPMENT, the material of a FIRE

ENCLOSURE, in the thinnest significant wall thickness used, shall be of 5VB CLASS MATERIAL or shall pass the test of Clause A.1

## LEGISLATION AND WEEE SYMBOL

**2002/96/EC Waste Electrical and Electronic Equipment Directive on the treatment, collection, recycling and disposal of electric and electronic devices and their components.**



The crossed dustbin symbol on the device means that it should not be disposed of with other household wastes at the end of its working life. Instead, the device should be taken to the waste collection centers for activation of the treatment, collection, recycling and disposal procedure.

To prevent possible harm to the environment or human health from uncontrolled waste disposal, please separate this from other types of wastes and recycle it responsibly to promote the sustainable reuse of material resources.

Household users should contact either the retailer where they purchased this product, or their local government office, for details of where and how they can take this item for environmentally safe recycling.

Business users should contact their supplier and check the terms and conditions of the purchase contract.

This product should not be mixed with other commercial wastes for disposal.

# Revision History

Changes to the original user manual are listed below:

Version	Date	Description
1.0	June 2011	Initial release

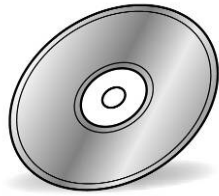
# Table Contents

<b>1 Item Checklist .....</b>	<b>7</b>
1-1 Standard Items .....	7
<b>2 System View .....</b>	<b>8</b>
2-1 Front View .....	8
2-2 Rear View .....	9
2-3 I/O View .....	10
<b>3 Driver Installation .....</b>	<b>11</b>
3-1 Driver List .....	11
3-2 Chipset Driver Installation .....	12
3-3 VGA Driver Installation .....	13
3-4 Audio Driver Installation .....	16
3-5 10/100/1000Mb LAN Driver Installation .....	17
3-6 POSTouch Driver Installation .....	18
<b>4 System Assembly .....</b>	<b>22</b>
4-1 HDD Replacement .....	22
<b>5 Peripheral Installation .....</b>	<b>23</b>
5-1 Phone Set Installation .....	23
5-2 Arm Installation .....	23
5-3 MSR Installation .....	24
<b>6 Specification .....</b>	<b>25</b>
<b>7 Jumper Settings .....</b>	<b>27</b>
7-1 C43 V1.0 motherboard .....	27

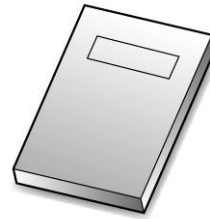
# 1 Item Checklist

Take the system unit out of the carton. Remove the unit from the carton by holding it by the foam inserts. The following contents should be found in the carton:

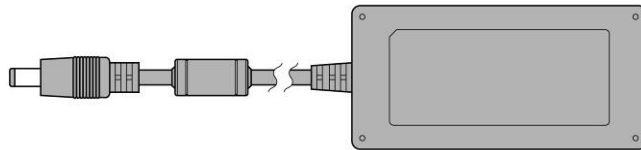
## 1-1 Standard Items



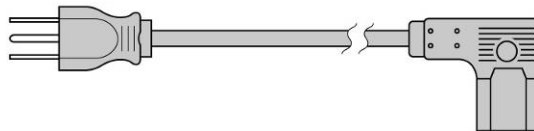
Driver CD



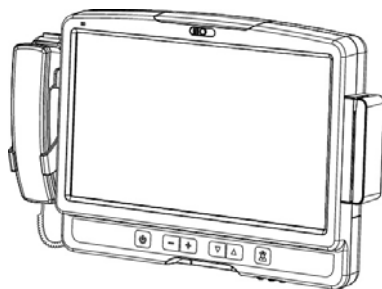
Manual



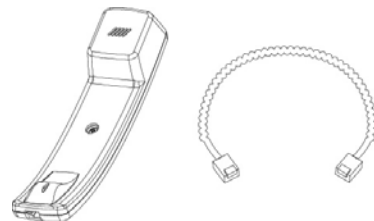
Power Adapter



Power Cable



System

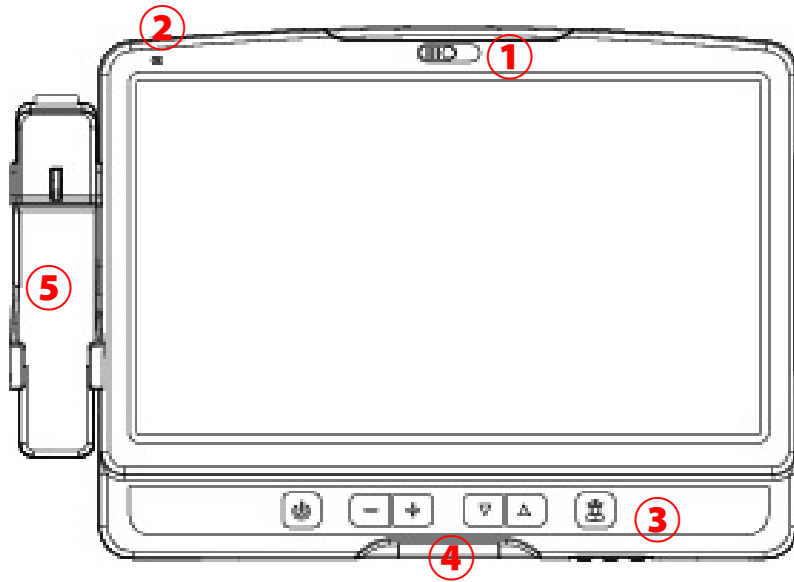


Phone Module



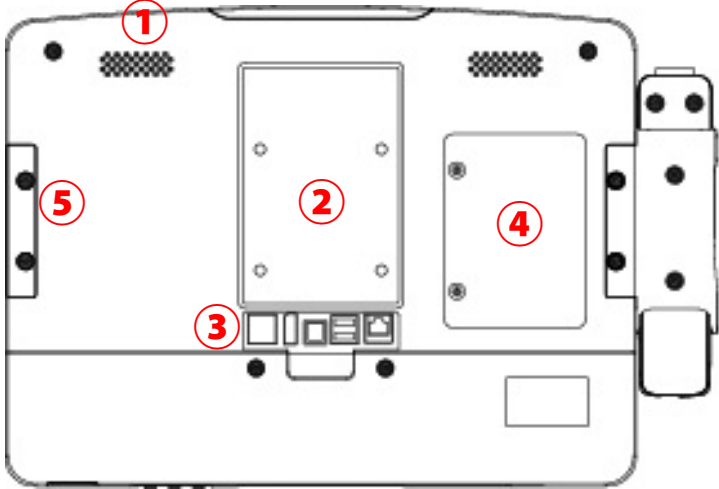
# 2 System View

## 2-1 Front View



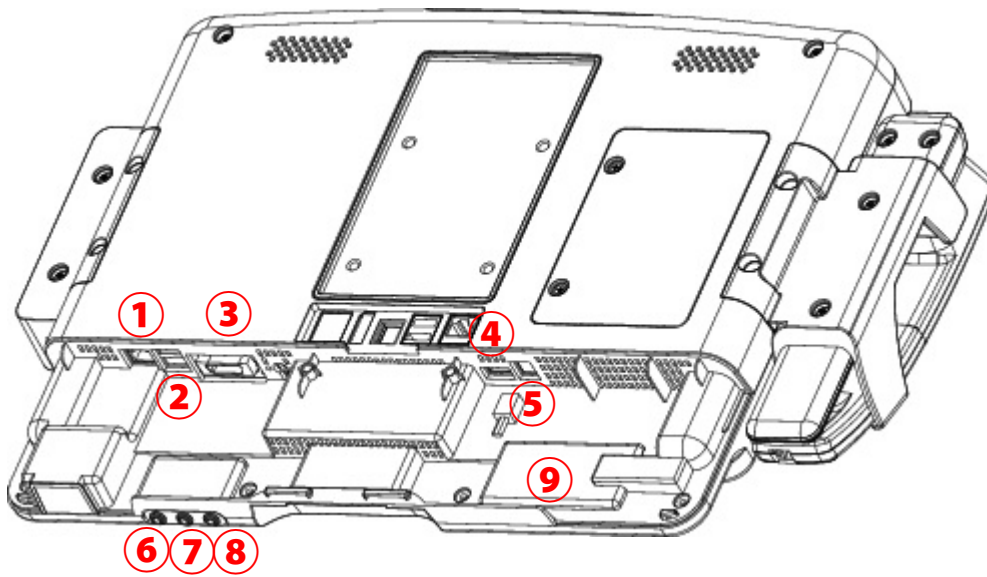
Number	Description
1	Build-in camera
2	Build-in Microphone
3	TV Key pad (power, volume, channel, and nurse call button)
4	Smart card reader slot
5	Phone set holder

# 2-2 Rear View



Number	Description
1	Speakers
2	VESA Holes
3	Rear I/O (from left to right: RJ48, USBx2, DC-IN, Display port , LAN Connector)
4	HDD door
5	MSR Slot (Option)

## 2-3 I/O View



Number	Description
1	LAN (RJ45)
2	USB x 2
3	SCSI Connector
4	USB x 1
5	Phone Jack (RJ11)
6	Audio Line-out
7	Audio Line-in
8	Audio MIC-IN
9	RFID sensor

# 3 Driver Installation

## 3-1 Driver List

### C43 Driver List

Folder/File	File Description
<CD>:\ K936_C43.htm	Driver List
<CD>:\COMMON\INTEL\Chipset\i9xx	Chipset Driver
<CD>:\COMMON\INTEL\VGA\GMA3150	VGA Driver
<CD>:\COMMON\Audio\Realtek_HD_Codec-AEC_enable	Audio driver with AEC enable
<CD>:\COMMON\ POS_Touch	POSTouch Driver
<CD>:\COMMON\Lan_driver\Intel	10/100/1000Mb LAN Driver

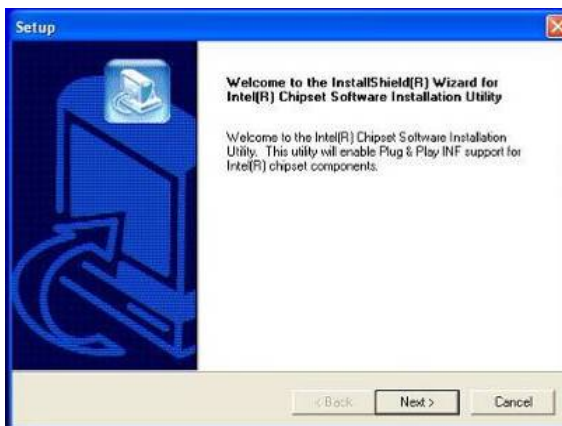
-The following procedures are for Windows 2000/XP, other platforms are similar.

## 3-2 Chipset Driver Installation

Function	OS	Note
Chipset	Windows	Installation Guide
Intel SATA AHCI	Windows XP driver	User manual
	WinXP	Installation Guide
	WinXP (64bit)	
VGA	Vista	
	Vista (64bit)	
	Win7	
	Win7 (64bit)	
	Linux	



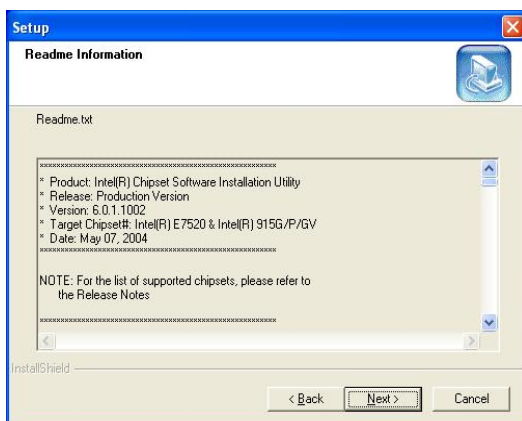
- Click "Windows" in the Driver List menu of K936 C43 and then double-click "v9.1.1"
- Double-click "infinst911\_autol.exe" on the My computer window.



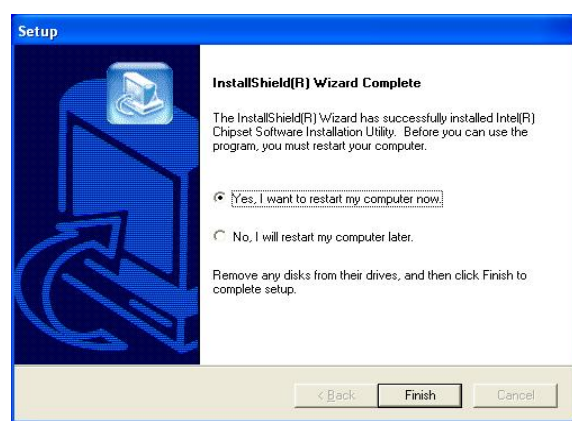
- Click the "Next" button on the Welcome window.



- Click the "Yes" button on the License Agreement window.



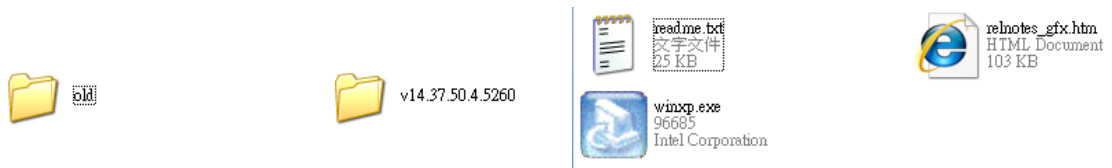
- Click the "Next" button on the Readme Information window.



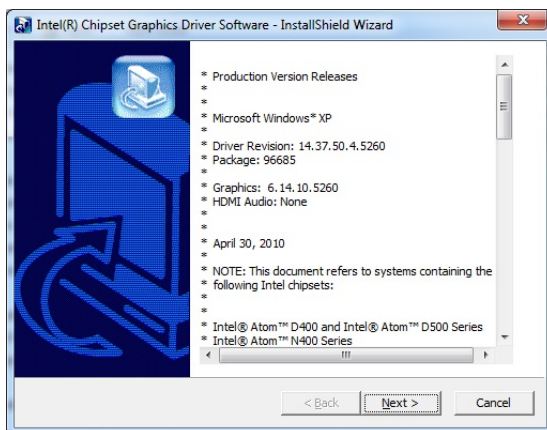
- Click the "Finish" button and restart your system.

### 3-3 VGA Driver Installation

Function	OS	Note
<a href="#">Chipset</a>	<a href="#">Windows</a>	<a href="#">Installation Guide</a>
<a href="#">Intel SATA AHCI</a>	<a href="#">Windows XP driver</a>	<a href="#">User manual</a>
<a href="#">VGA</a>	<a href="#">WinXP</a>	<a href="#">Installation Guide</a>
	<a href="#">WinXP (64bit)</a>	
	<a href="#">Vista</a>	
	<a href="#">Vista (64bit)</a>	
	<a href="#">Win7</a>	
	<a href="#">Win7 (64bit)</a>	
	<a href="#">Linux</a>	



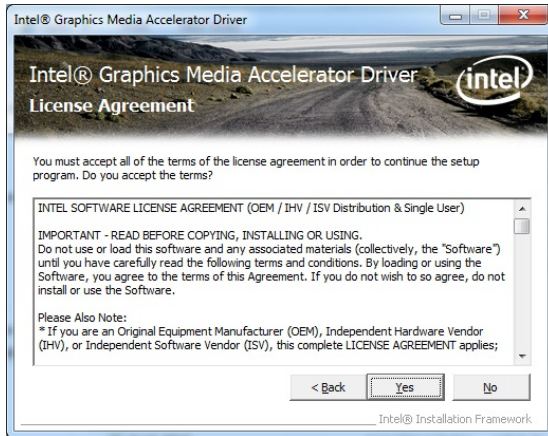
- Click “WinXP” of “VGA” section in the Driver List menu and then double-click “v14.37.50.4.5260”
- Double-click “winxp.exe” on the My computer window..



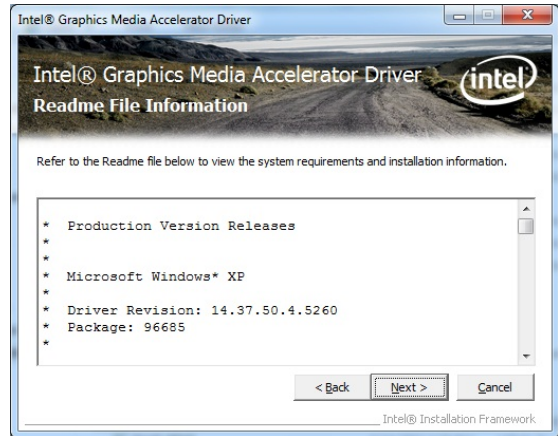
- Click the “Next” button on the Intel(R) Chipset Graphics Driver Software-Install Shield(R) Wizard dialog.



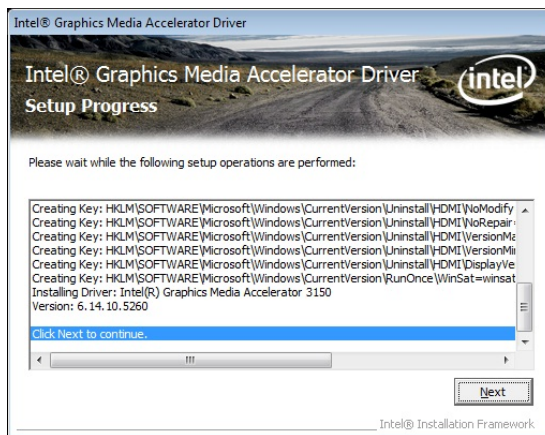
- Click the “Next” button on the Intel(R) Graphics Media Accelerator Driver dialog.



e. Click the “Yes” button on the Intel(R) Graphics Media Accelerator Driver dialog.



f. Click “Next” button on the Intel(R) Graphics Media Accelerator Driver dialog.



g. Click “Next” button on the Intel(R) Graphics Media Accelerator Driver dialog.



h. Select “Yes, I want to restart my computer now” and click the “Finish” button on the Intel(R) Graphics Media Accelerator Driver dialog.

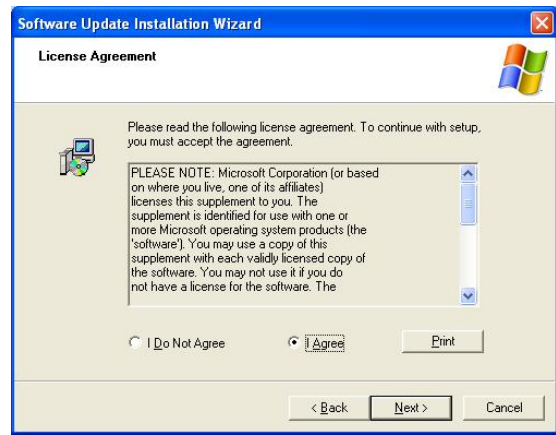
## For WinXP and POSReady 2009 upgrade

VGA Upgrade	WinXP	For WinXP & POSReady 2009
• <a href="#">VGA</a>		

a. Click “WinXP” of “VGA” section in the Driver List menu.



b. Click the “Next” button on the Software Update Installation Wizard dialog.



c. Click “I Agree” and click “Next” button on the Software Update Installation Wizard dialog.



d. Click the “Finish” button on the Software Update Installation Wizard dialog to restart your system.



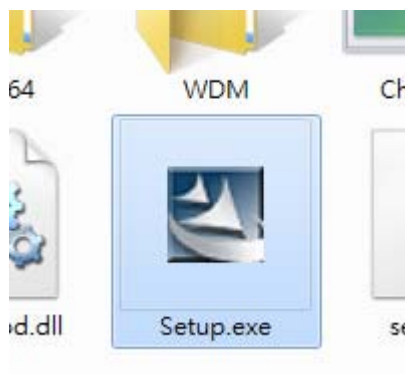
## 3-4 Audio Driver Installation

Audio	<a href="#">Windows</a>	<ul style="list-style-type: none"><li>• Default enable AEC function</li><li>• <a href="#">User's manual</a></li></ul>
-------	-------------------------	---

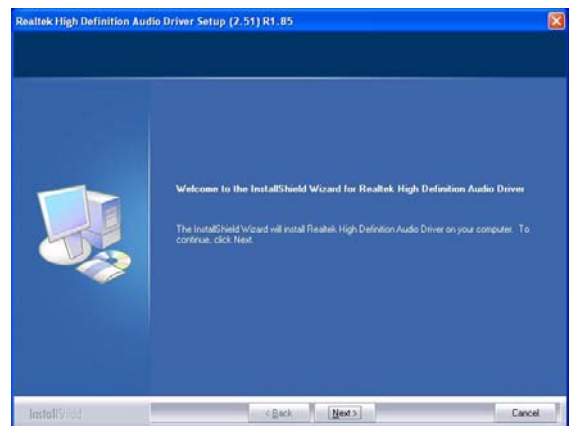
a. Click “Windows” of the “Audio” section in the Driver List menu.



b. Double-click “R254+AEC” on the My Computer window.



c. Double-click “Setup.exe” on the My Computer window.



d. Click “Next” button on the Realtek Audio Setup window.



e. Click “Finish” button on the Realtek Audio Setup window.

## 3-5 10/100/1000Mb LAN Driver Installation

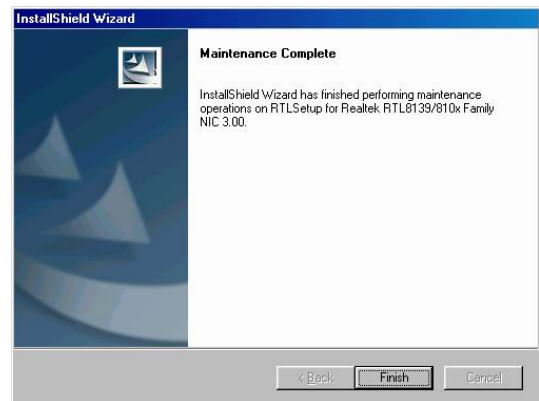
1000Mb LAN	<a href="#">DOS</a>	
• <a href="#">Intel</a>	<a href="#">Windows</a>	
	<a href="#">Windows(64bit)</a>	
	<a href="#">Linux</a>	



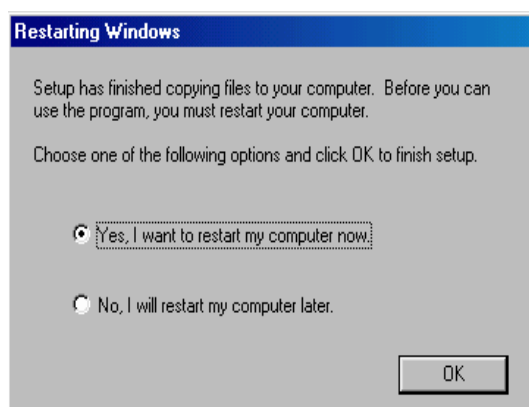
- In the "intel" section, click on "Windows" and click on "Alpha"
- Double-click "v15.6"



- Double-click Setup.exe



- Click the Finish button on the Maintenance Complete window.



- Click the OK button and restart your system.

## 3-6 POSTouch Driver Installation



a. In the “Touch Screen auto...” section, click “Windows”.



b. Click “Install Touch Driver” on “FT Touch Auto Install V1.0.4.1” window to detect the touch type in your system.



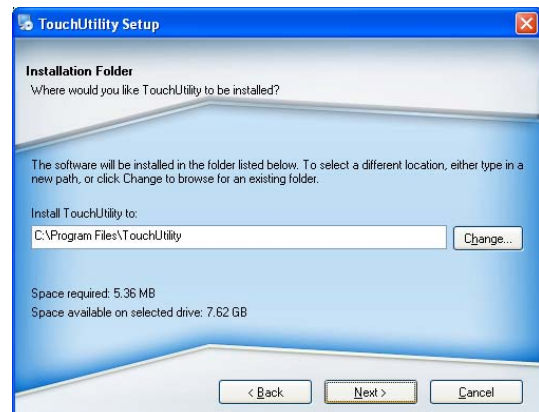
c. “FT Touch Auto Install” program will detect what touch type and interface being installed on the system.



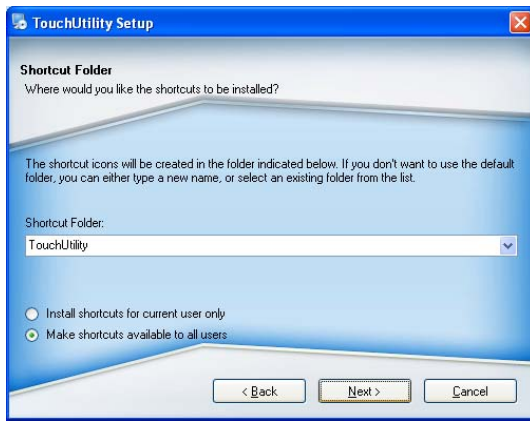
d. Click “Next”.



e. Select “I agree...” and click “Next”.



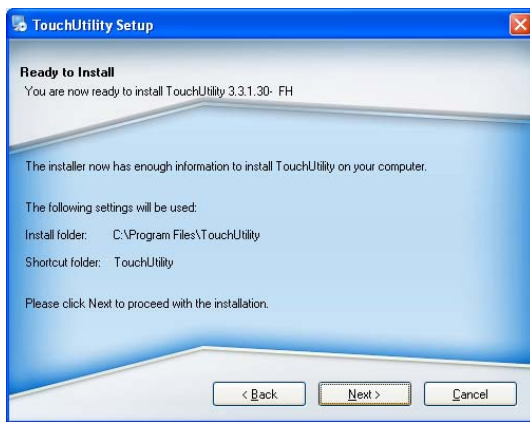
f. Select the installation folder for the touch utility driver and click “Next”.



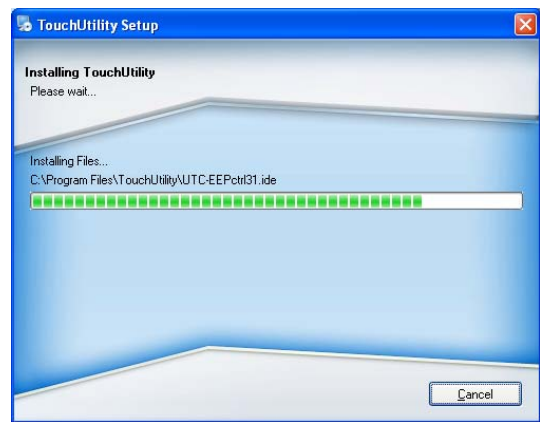
g. Select the shortcut folder for the touch utility driver and click "Next".



h. Click "Next".



i. Click "Next".



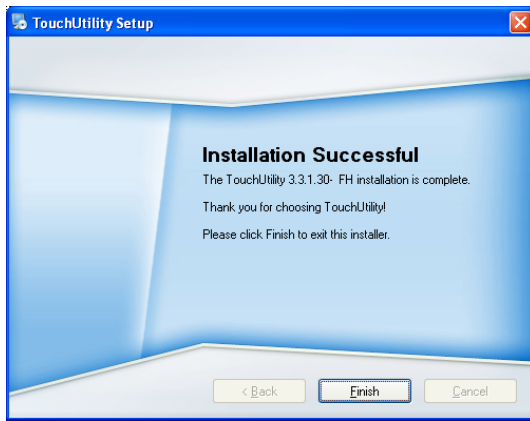
j. The computer is installing the touch driver



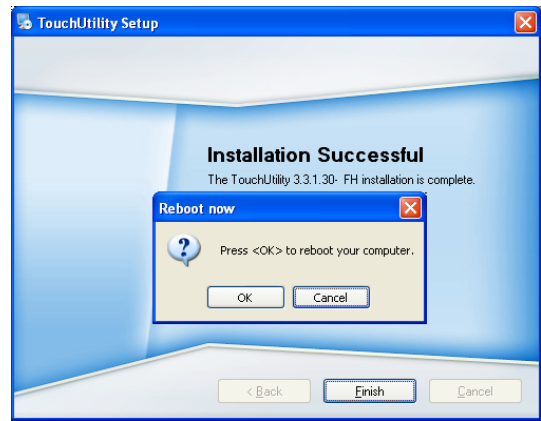
k. Click "Continue Anyway" button.



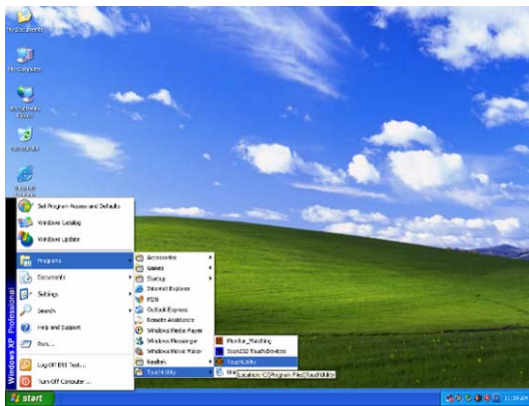
l. The serial ports are scanned for a touch device. The Touch panel is on COM5.



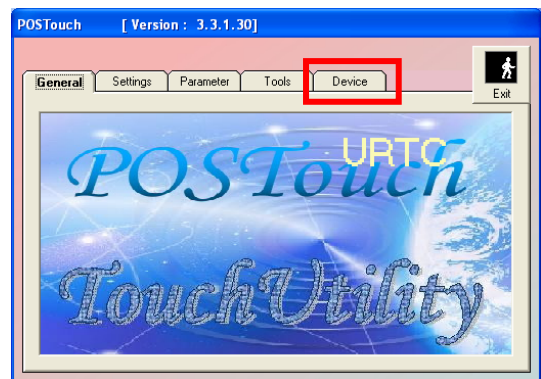
m. Click "Finish".



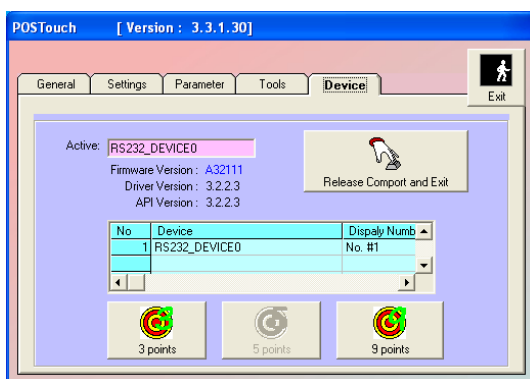
n. Click "OK" to restart the computer and finish the touch utility installation.



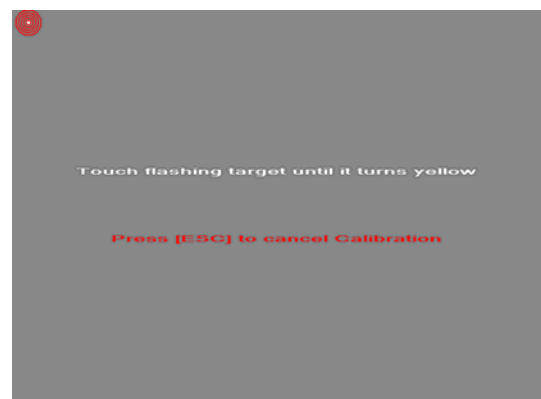
o. The computer has restarted. Click on the "Start" button, select "Programs", then select "Touchutility".



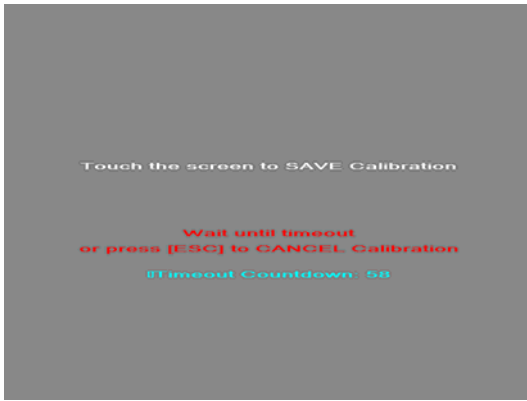
p. Select the Device tab.



q. Click on the 3 points or the 9 points calibration button.



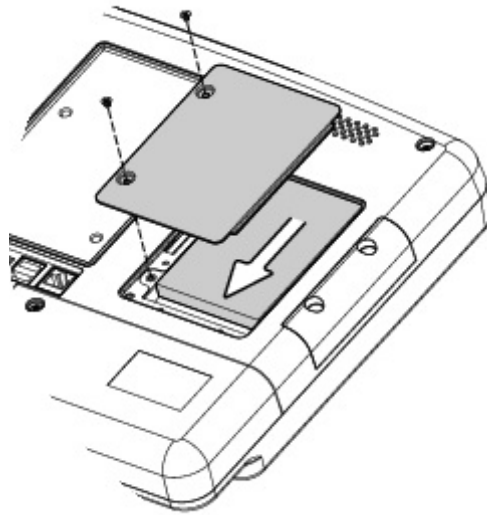
r. Follow the instructions on the screen to do the calibration of the touch panel



s. Touch anywhere on the screen to save the calibration.

# 4 System Assembly

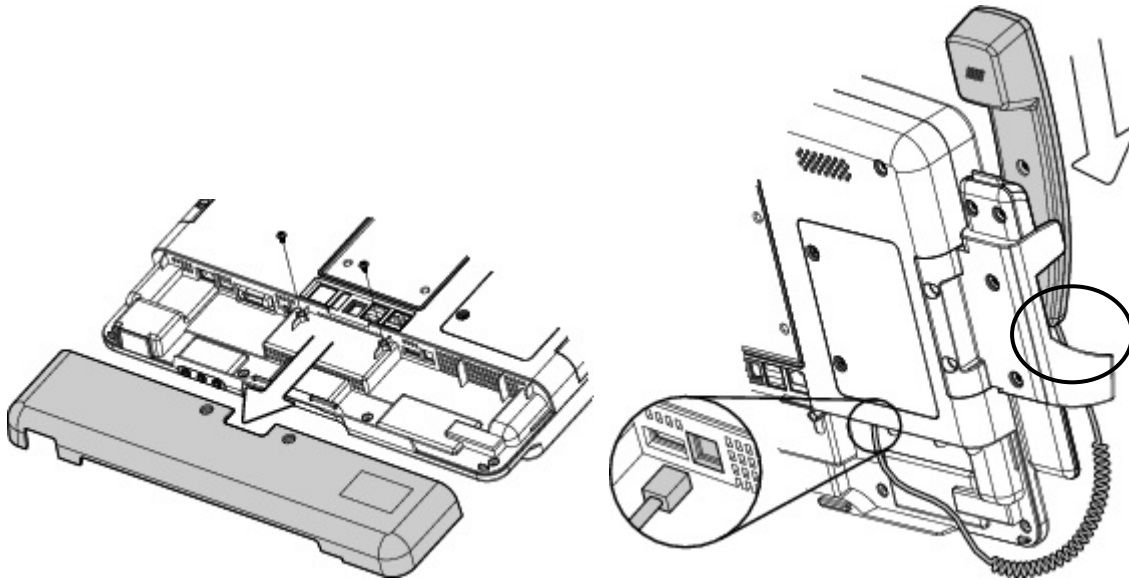
## 4-1 HDD Replacement



- a. Find the HDD door at the rear right side of the system and loosen the screws(x2)
- b. To replace the HDD, push the HDD outwards as picture shown.

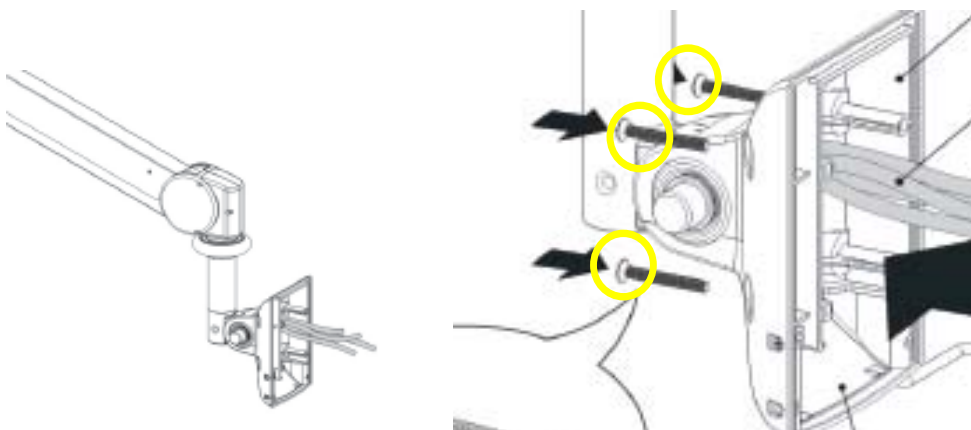
# 5 Peripheral Installation

## 5-1 Phone Set Installation



- Loosen the screws(x2) to open the cable cover.
- Slide the phone module into the phone set holder and connect the phone cable to the connector on the phone module.
- Connect the other end of the phone cable to the connector on the system.

## 5-2 Arm Installation

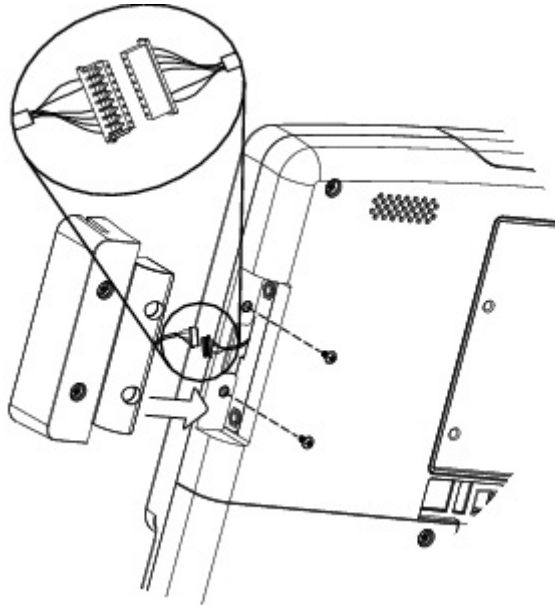


- Connect the cables to the system
- Tighten the screws(monitor screwx4)

Note: Only use concrete walls to fix the Arm (and wall box) to.



## 5-3 MSR Installation



- a. Connect the MSR cable to connector to the on system side.
- b. Fasten screws(x2) to secure the module.

# 6 Specification

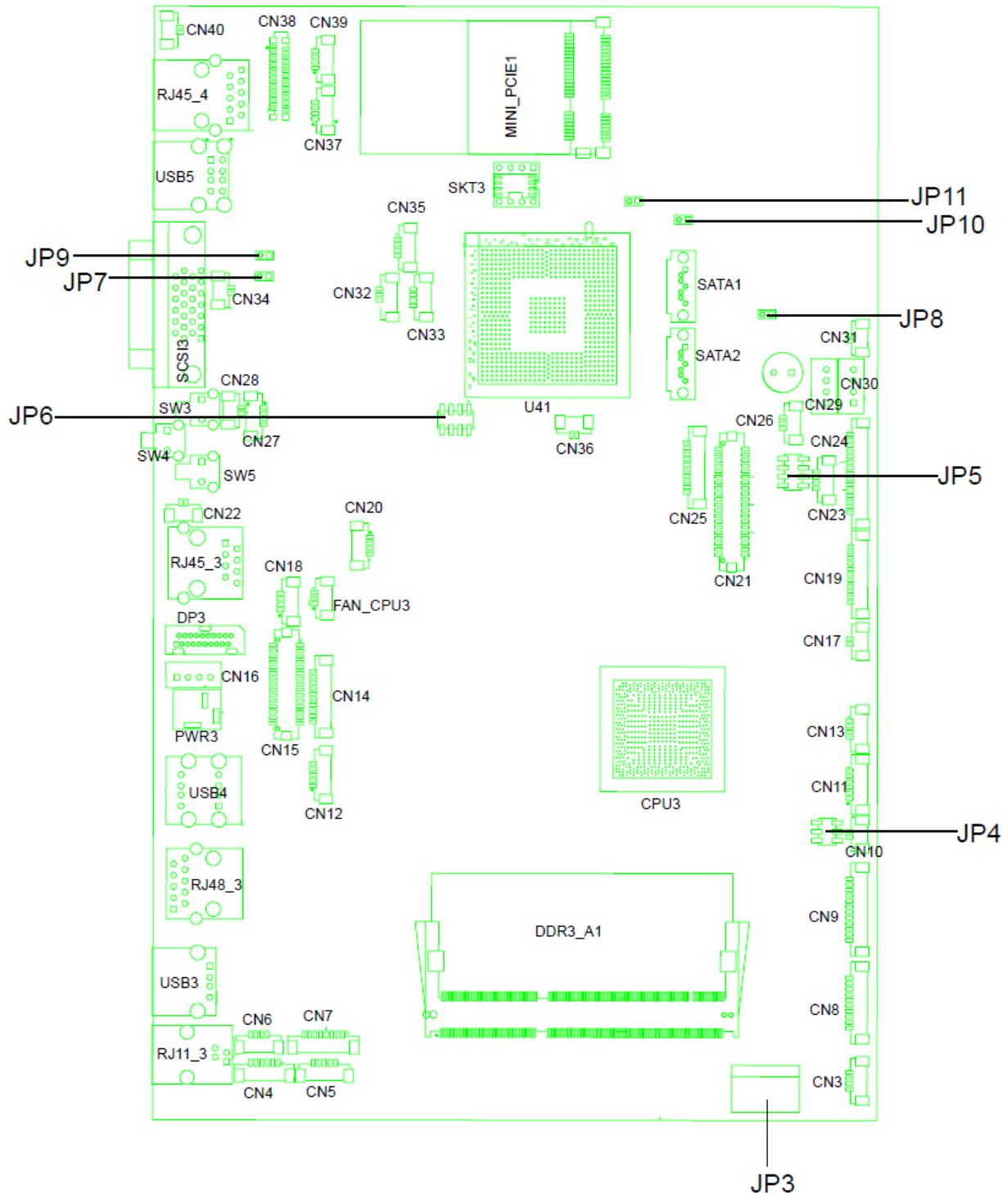
<b>Model</b>	<b>K936</b>
<b>Motherboard</b>	<b>C43 V1.0</b>
CPU	Intel pineview D525 1.8G L2 1M, Dual core
Core Logic	CPU with Graphic built-in + ICH 8M
System Memory	2 x DDR3 DIMM up to 4GB FSB800Mhz
Graphic Memory	Intel GMA 3150 share system memory 256MB
LAN controller / phy	Intel WG82583V / Intel WG82567V
Audio controller	Realtek ALC 662-GR HD codec
I/O controller	Winbond W83627UHG
BIOS	AMI
LVDS Interface	Mstar TSUMU18ER-1
Touch controller	Idealtek local touch (RS232)
Touch	True flat- 5 wire-RS232 / DMR-USB
Watch Dog Timer	Hardware WDT
2nd VGA	Display port connector
Display size	15.6"
Resolution	1366 X768
Brightness	250 nits
<b>Storage</b>	
HDD	1x 2.5" SATA HDD, pSSD
<b>Expansion</b>	
Mini PCIe	2 x PCI-e full size slot for video decoder card / RCA module
<b>Bottom I / O</b>	
Power button	1
Handset	1xRJ11(4 pin)
Remote	1x SCSI 26pin,
USB	3 (USB 2.0)
LAN (2nd LAN)	1xRJ45 (with 100/1000,LED indicator)
Reset button	1, button can be pressed by probe
MIC-in	1(Auto-detect, GPIO), in external IO
Line-out	2(Auto-detect, GPIO), in external IO
<b>Vertical I / O</b>	
Power	DC Jack
USB	2 (USB 2.0)
LAN	1 x RJ 45 (with 100/1000)
2nd Display	1 x Display port
Nurse call	1 x RJ 48
<b>Membrane</b>	

Power button	1xpower button(GPIO)
Channel adjustment	1xChannel up, 1xChannge down(GPIO)
Volume	1xvolume up, 1xvolume down(GPIO)
Nurse call	1x Nurse call (GPIO)
<b>Certificate</b>	
EMC & Safety	FCC Class B, CE, LVD / UL 60950 / UL 60601
<b>Environment</b>	
Operating Temperature	0°C ~ 35°C (32°F ~ 104°F)
Storage Temperature	-20°C ~ 55°C (-4°F ~ 140°F)
Operating Humidity	20% - 80% RH non condensing
Storage Humidity	20% - 85% RH non condensing
Weight	4 kg (without handset / cradle)
<b>Communication &amp; peripherals</b>	
Build in Microphone	In left side of Web cam with GPIO
TV Tuner (Analog RCA,optional)	RCA connector
Smart IC card reader	Comply with ISO 7816-1,2,3,T=1 and T=0 protocol
RFID module	Internal USB connection
MSR (optional)	3 track (PS2)
VOIP phone	Handset module
	Cradle, mechanical switch
Webcam	1.3M web cam(USB) with web cam door
Bedside light	blue color
Video decoder card	mini PCIe video decoder card
2D scanner(Optional)	2D scanner
<b>Operating System</b>	
OS Support	Windows® XP Professional, Windows Embedded POSReady 2009, Windows XP Embedded, Windows XP Professional for Embedded, Windows 7, Linux

# 7 Jumper Settings

## 7-1 C43 V1.0 motherboard

### 7-1-1 Motherboard Layout



## 7-1-2 Connectors & Functions

Connector	Function
CN3	USB Port For Web Cam
CN4	Speaker & MIC
CN5	Cradle
CN6	Speaker
CN7	Audio Jack (Line out & MIC)
CN9	Inverter
CN10	Build-In MIC
CN12	Nurse Call Button
CN14	Membrane
CN15	30P All-In-One (Membrane, 2D scanner, RFID, Smart card, Audio Jack)
CN17	Nurse Call LED Power
CN18	Audio Jack (Line Out)
CN19/JP5	System Indicator
CN20	IrDA
CN21	LVDS
CN22	Power LED
CN23	PS/2 Keyboard
CN24	MSR
CN25	COM1
CN26	System FAN
CN27	MIC for AEC
CN28	Power Button
CN29/30	SATA Power
CN31	HDD LED
CN32/35	Internal USB
CN33	USB Port For DVD Dong
CN34	LAN2 LED
CN36	Battery
CN37	USB Port For RFID
CN38	2D Scanner
CN39	USB Port For Smart Card
CN40	LAN1 LED
DP3	DVI
PWR3	+19V DC Jack
RJ11_3	Handset
RJ45_3	LAN2

RJ45_4	LAN1
RJ48_3	Nurse Call
SATA1/2	SATA
SCSI_3	Remote Control
USB3	USB3
USB4	USB1, USB2 of HUB
USB5	USB1, USB2
JP3	Touch
JP4	Inverter Selection
JP6	LCD ID Setting
JP7	MCU Power Button
JP8	Power Mode Setting
JP9	MCU Mode Setting
JP10	System Reset
JP11	CMOS Operation Mode

## 7-1-3 Jumper Setting

### Inverter Selection

Function	JP4 (1-2) (3-4) (5-6)
▲CCFL	<pre> 1 3 5 □ □ ■ □ □ ■ 2 4 6           </pre>
LED	<pre> 1 3 5 ■ ■ □ ■ ■ □ 2 4 6           </pre>

### System Indicator

Function	JP5 (1-2) (3-4) (5-6) (7-8)
▲Disable	<pre> 1 3 5 7 ■ ■ □ □ ■ ■ □ □ 2 4 6 8           </pre>
Enable	<pre> 1 3 5 7 □ □ ■ ■ □ □ ■ ■ 2 4 6 8           </pre>


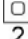


### MCU Power Button

Function	JP7 (1-2)
Disable	<pre> 1 □ □ 2           </pre>
▲Enable	<pre> 1 ■ ■ 2           </pre>


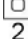


### Power Mode Setting

Function	JP8 (1-2)
ATX Power	<pre> 1 □ □ 2           </pre>
▲AT Power	<pre> 1 ■ ■ 2           </pre>


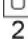


### MCU Mode Setting

Function	JP9 (1-2)
▲Normal	<div style="text-align: center;">                     1                          2                 </div>
ISP Debug	<div style="text-align: center;">                     1                          2                 </div>

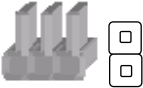
### System Reset

Function	JP10 (1-2)
▲System Normal	<div style="text-align: center;">                     1                          2                 </div>
System Reset	<div style="text-align: center;">                     1                          2                 </div>

### CMOS Operation Mode

Function	JP11 (1-2)
▲CMOS Normal	<div style="text-align: center;">                     1                          2                 </div>
CMOS Reset	<div style="text-align: center;">                     1                          2                 </div>

▲ = Manufacturer Default Setting

Note:  OPEN

 SHORT