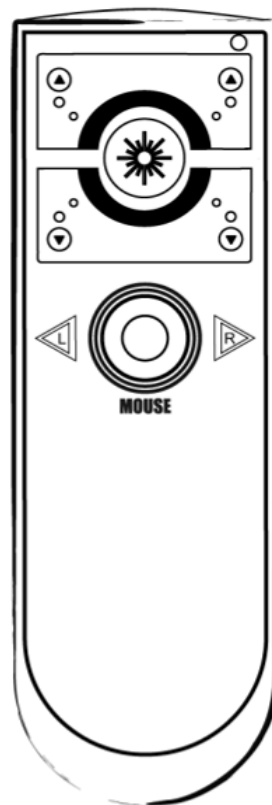




## Presenter

# User's Manual



**RC132/612**

### **!!! Attention!!!**

- A. Do not allow minors to use the laser pointer unsupervised. Laser pointers are not toys.**
- B. Avoid direct eye exposure.**
- C. Never shine the laser pointer at anyone. The laser pointer is designed to illustrate inanimate objects.**
- D. Do not point the laser pointer at mirror-like surfaces. A reflected beam can act like a direct beam on the eye.**



***This device complies with Part 15 of the FCC Rules. Operation is subject to the following two conditions:***

- (1) This device may not cause harmful interference and***
- (2) This device must accept any interference received, including interference that may cause undesired operation.***

## Table of Content

<b>INTRODUCTION.....</b>	<b>3</b>
<b>FEATURES.....</b>	<b>4</b>
<b>PACKAGE CONTENTS.....</b>	<b>5</b>
<b>SYSTEM REQUIREMENTS .....</b>	<b>5</b>
<b>INSTALLATION AND OPERATION .....</b>	<b>6</b>
<b>1. OPEN THE BATTERY COVER AND INSTALL BATTERIES .....</b>	<b>6</b>
<b>2. INSTALL RECEIVER.....</b>	<b>6</b>
<b>3. PRESENTER BUTTON FUNCTION .....</b>	<b>7</b>
<b>4. INSTALL <i>aimMaster EZ</i> FOR MICROSOFT® WINDOWS® 2000/XP/ VISTA/7.....</b>	<b>8</b>
<b>5. USE <i>aimMaster EZ</i> FOR MICROSOFT® WINDOWS® 2000/XP/ VISTA/7.....</b>	<b>11</b>
<b>TROUBLE SHOOTING .....</b>	<b>15</b>

V1.0

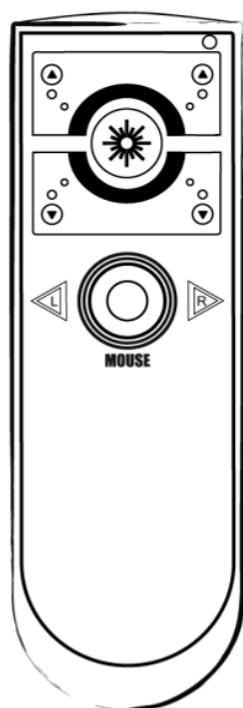
## Introduction

Thank you for purchasing Presenter.

Please read this user's manual carefully before operating the unit, and keep it for future reference.

The wireless presenter is the ideal wireless remote controller for large-scale presentations and conference rooms. 2.4GHz of wireless technology lets you concentrate on your presentation. The preset RF connection enables true plug-and-play capability; no driver is required. The presenter features dedicated PowerPoint® page-up and page-down control keys, a 360-degree mouse, and a laser pointer. The software, *aimMaster EZ* (for Microsoft® Windows® 2000/XP/ Vista/7) allows you to put marks during the presentation to attract the audiences' attention. A travel-friendly design that stores the receiver dongle into presenter also turns off the switch to conserve power.

We make no representation for the errors, omissions or updates of this document.



**RC132**



**RF612**

## Features

1. 2.4 GHz RF wireless transmission provide up to 20 meters omni-directional working range.
2. Built-in laser pointer for presentation guidance.
3. Built-in cursor mouse for 360-degree control.
4. Plug and Play. No driver required.
5. Store wireless USB receiver inside presenter.
6. Useful and friendly software, *aimMaster EZ* (for Microsoft® Windows® 2000/ XP/ Vista/7/ 8), works under Windows 2000/ XP/ Vista/ 7/ 8 OS and allows you to put marks to attract audiences' attention.
7. Compact design uses hidden dongle as on/off power switch of RF and laser.
8. Bright laser beam provides easy to see pointer visibility.
9. Compatible with MS, Openoffice, Google Docs
10. Two AAA batteries provide long and reliable usage.

## **Package Contents**

- Presenter
- USB type RF Dongle receiver
- *aimMaster EZ* Software (for Microsoft® Windows® 2000/ XP/ Vista/ 7 /8) and User's Manual CD-ROM
- Two AAA batteries
- Quick Guide

## **System Requirements**

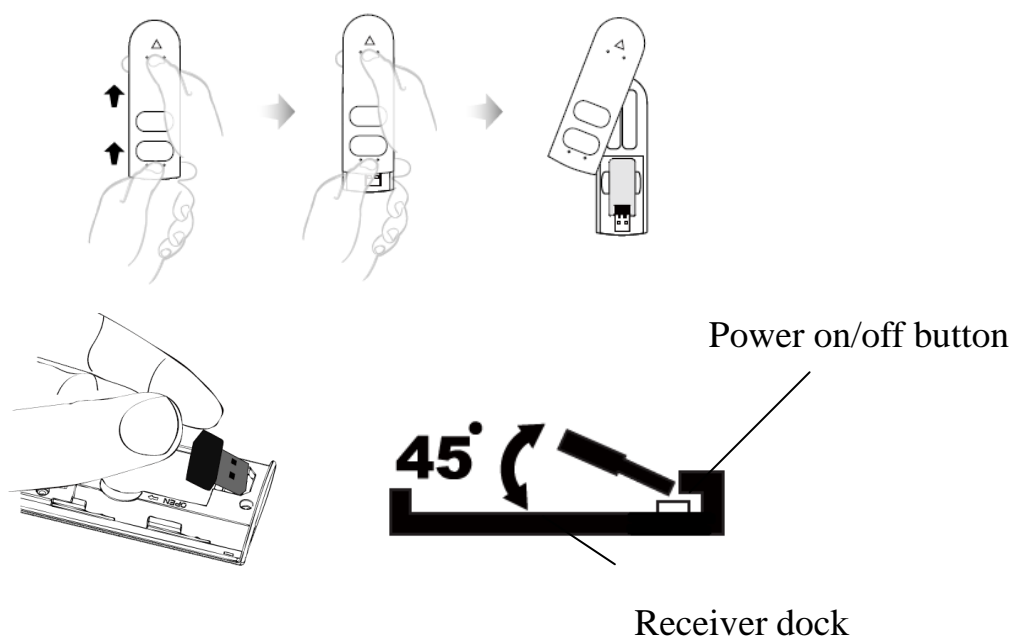
- Microsoft® Windows® 2000/XP/ Vista/ 7/ 8 and Mac OS
- 512MB RAM recommended
- CD-ROM drive or DVD-ROM Drive
- USB Port; PC platform

## Installation and operation

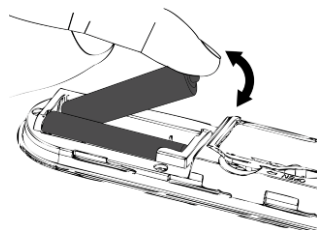
### 1. Open the battery cover and Install batteries

Open the battery cover of presenter and take off the receiver with 45 degrees angle from the receiver dock before you start to use.

(Please insert the receiver into the receiver dock of the presenter with 45 degrees angle after the presentation. The Power Switch inside the presenter dock will turn off the power when you put the receiver in)



Put in two AAA batteries and close the battery cover.



### 2. Install Receiver

Plug receiver (with golden pins face up for notebook computer) into the USB port of your computer. If the blue indicator on receiver does not flash once, unplug receiver, turn the receiver upside down and plug in again.

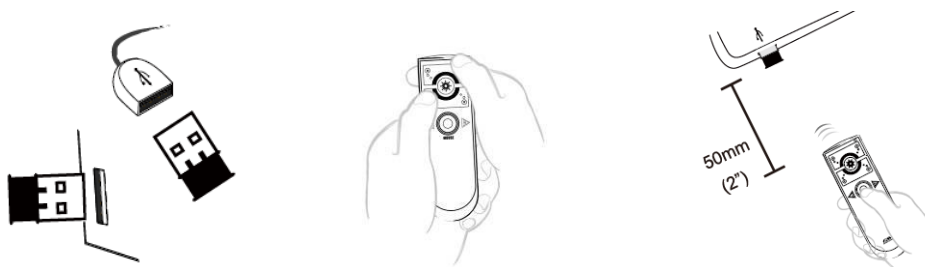
Keep the presenter close to receiver (within 5 cm, or 2 inches) and press any button except the LASER button of the receiver for more than one second. If the receiver's blue indicator light is blinking, you may start to use the receiver for presentation. Otherwise, do the

---

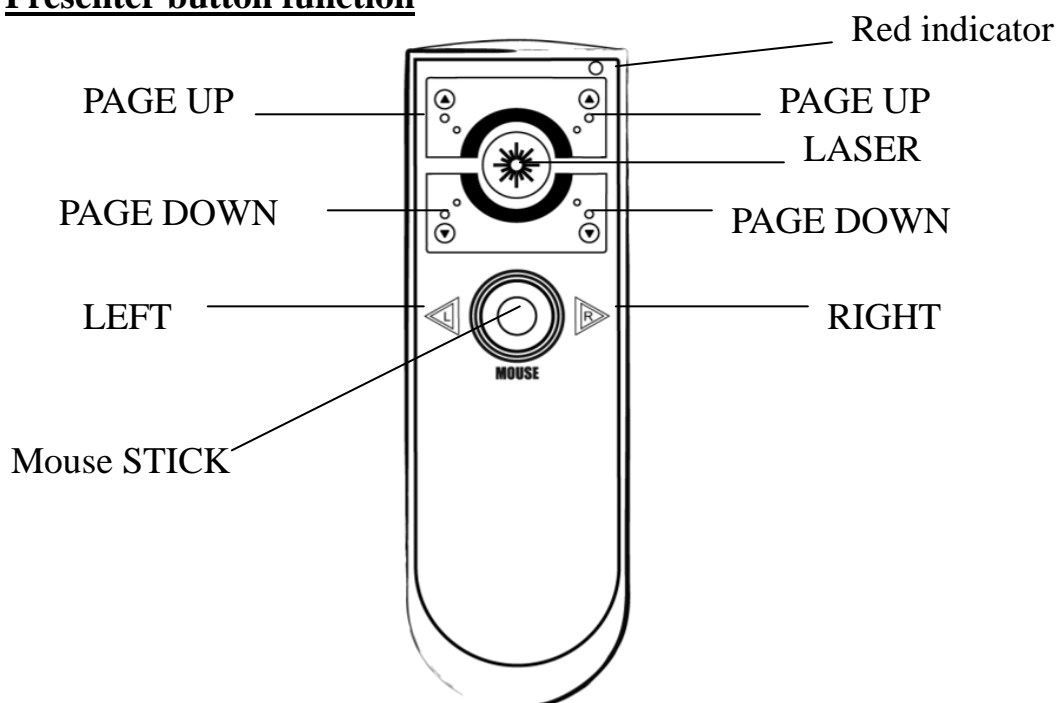
following steps to **pair** the presenter and the receiver:

### Pairing

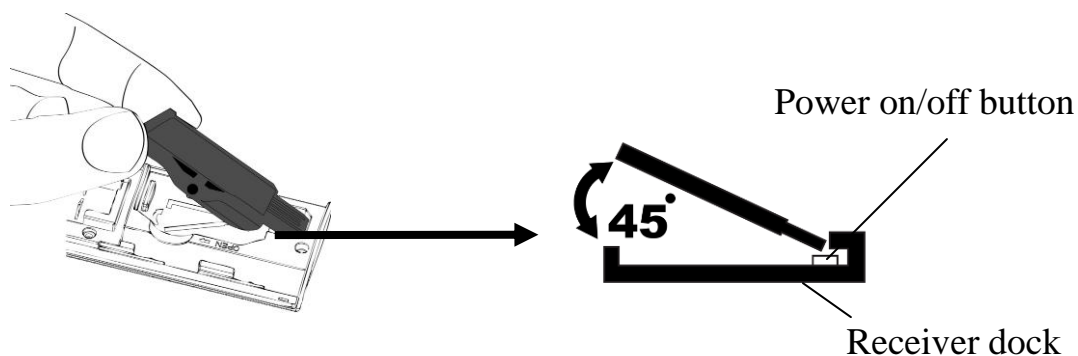
- A. Press and hold both UP and DOWN buttons around 3 seconds until the red indicator on the presenter flashes. Release both buttons.
- B. Put your presenter close to the receiver within 5 cm (2 inches) and
- C. Press and hold any button except LASER button of the presenter for 1~3 seconds. The red indicator on the presenter will be on for 1 second if the pairing is successful. Release the button.
- D. The blue indicator of receiver blinks when the presenter keys (except the LASER button) are pressed.








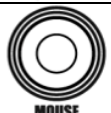
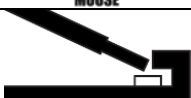


### 3. Presenter button function







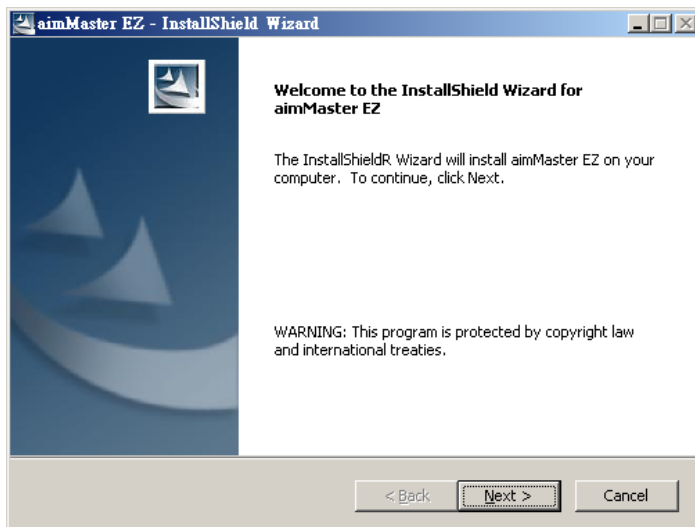
Button	Function
 or 	<b>PAGE UP button</b> (suit for left-handed or right-handed user)
 or 	<b>PAGE DOWN button</b> (suit for left-handed or right-handed user)
	<b>LASER button</b> (if receiver is put into presenter, the laser power is off and can't operate)
	<b>Mouse LEFT button</b>
	<b>Mouse RIGHT button</b>
 MOUSE	<b>Mouse STICK</b> (use your finger tip to push STICK to any direction.)
	<b>Power on/ off button</b> (on/off power switch of presenter)

**4. Install aimMaster EZ for Microsoft® Windows® 2000/XP/ Vista/7**

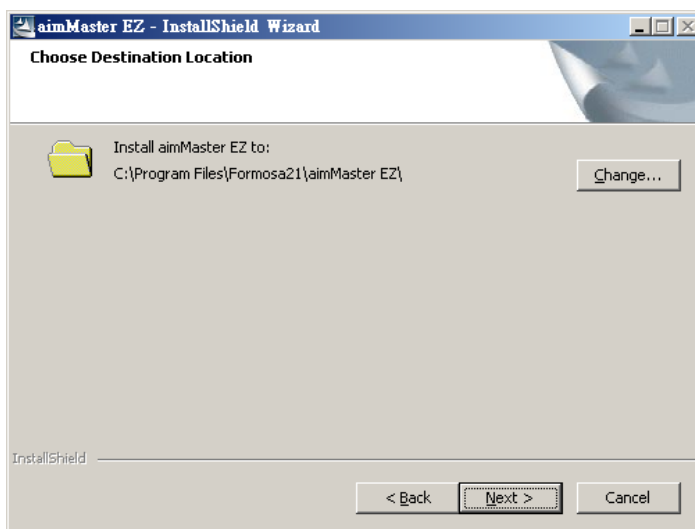
Insert the CD to your computer. The following window will pop up.



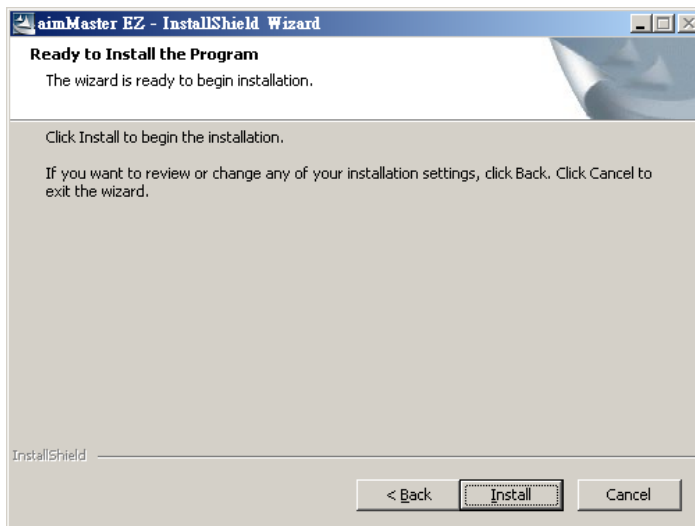
Click “Next”



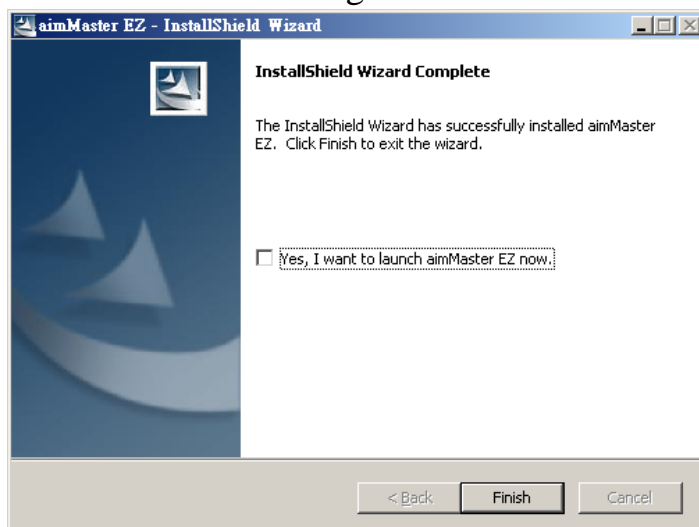
Click “Next”



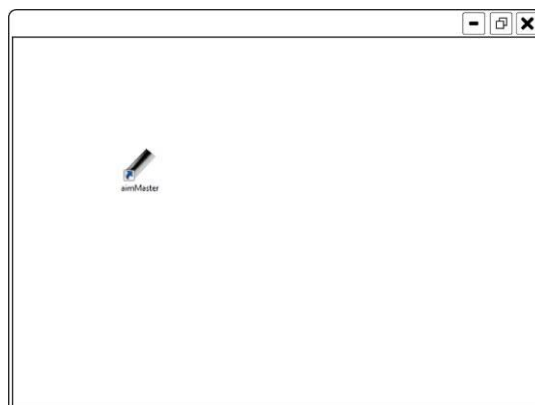
Click “Install”




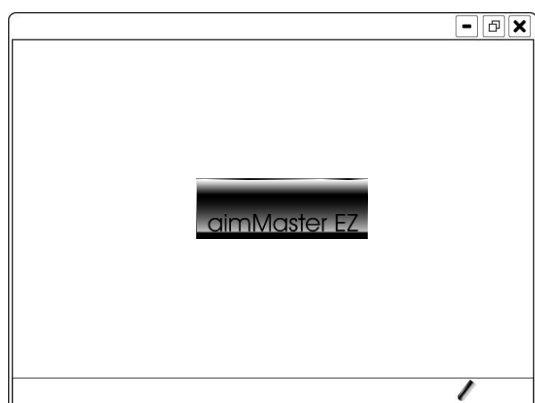
Choose “Yes, I want to launch *aimMaster EZ* now” and click “Finish” to start using *aimMaster EZ*.



Double Click the shortcut icon of *aimMaster EZ* exe file shown on your desktop to activate *aimMaster EZ*.



The message window will pop up 3 seconds to remind you that the *aimMaster EZ* is activated. You will see the *aimMaster EZ* icon  on the system tray. The system tray icon will be disappeared when the receiver is removed.




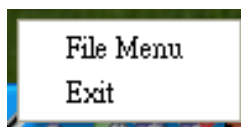
## 5. Use *aimMaster EZ* for Microsoft® Windows® 2000/XP/ Vista/7

### Plug and Present

Unplug the receiver and plug into the computer for the presentation.

### Set File-Link


Right click the *aimMaster EZ* icon  on the system tray and select “File Menu” as below:



The following window will pop up. Click “Browse” button to choose the file that you want to present (3 files at most), and then press OK button. You may click “Clear” button to reset the file linked previously.



### Open File(s)





Press and hold the RIGHT button  for 2 seconds to enable *aimMaster EZ*. Before drawing and pressing PAGE UP, *aimMaster EZ* will open the file(s) based on file-link.

In a presentation, you can use the mark pen to highlight some important articles or blank the screen to catch the audiences’ attention. *aimMaster EZ* supports two mark pens, Check Pen and Line Pen. It also provides a blank function. You can blank the screen so that the audiences will focus on your speech. When you enter *aimMaster EZ*, you can click the RIGHT button to choose one of the 4 modes, Check Pen, Line Pen, Mouse and Blank.




---

In a presentation, you can use the mark pen to highlight some important articles or blank the screen to catch the audiences' attention. *aimMaster EZ* supports two mark pens, Check Pen and Line Pen. It also provides a blank function. You can blank the screen so that the audiences will focus on your speech. When you enter *aimMaster EZ*, you can click the RIGHT button to choose one of the 4 modes, Check Pen, Line Pen, Mouse and Blank.









### Check Pen Mode

Press and hold the RIGHT button  for 2 seconds to enable *aimMaster EZ*. The first mode entered is Check Pen Mode. A check symbol  will replace the cursor symbol and the *aimMaster EZ* icon on the system tray will be changed from  to .




In the Check Pen Mode, each LEFT  click will leave a red check mark  below the cursor  position.




Please refer to the following table for the different modes.

Mark Pen Mode	Cursor	Mark	System Tray
Check Pen			
Line Pen			
Mouse		n.a.	
Blank	n.a.	n.a.	n.a.




Note: When you turn on your computer, please remember to run *aimMaster EZ*, otherwise when you press and hold RIGHT button for 2 seconds, you can **NOT** enter the Check Mark Mode.

## Line Pen Mode

Click the RIGHT button  once; *aimMaster EZ* will go from the Check Pen Mode into the Line Pen Mode.




The cursor symbol becomes  and the *aimMaster EZ* icon on the system tray is changed from  into .



In the Line Pen Mode, press and hold the LEFT button  will draw a red line from right end of the cursor  location and this red line extends towards the right direction. The longer you hold the LEFT button , the longer the red line is.





## Mouse Mode

Click the RIGHT button  again to go from the Check Mode into the Mouse Mode. In this mode, the cursor becomes an arrow . The *aimMaster EZ* icon will change to  on the

system tray. It has the normal mouse functions. You can move the Mouse STICK and LEFT/RIGHT click your hyper-link file that is inserted in your Presentation file.




In the Mouse Mode, click the RIGHT button  to go back to the Check Pen Mode. In this way, the 3 modes, Check Pen, Line Pen, and Mouse, are cycled by the RIGHT button  clicks.

## Undo the Marks


To undo the Check/Line Marks you have done on the screen, click PAGE UP button once will clear the latest Check/Line Mark. The further PAGE UP clicks will undo the marks until all the Check/Line marks are cleared.

### Clear all Marks


To clear all Check/Line Marks, you may either click PAGE DOWN button once, or, press the ESC key of your keyboard. *aimMaster EZ* is then disabled.

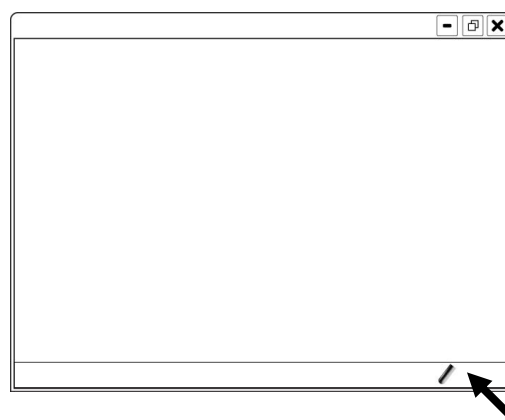
When you want to use mark pen again, press and hold RIGHT button  for 2 seconds to enable *aimMaster EZ* and enter the Mark Pen Mode as we described previously.

### Blank the Screen

When *aimMaster EZ* is enabled, press and hold the RIGHT button  for 1 second, the screen becomes blank. To get back the original screen, click PAGE DOWN button once. *aimMaster EZ* will go back to one of the 3 modes, Check Mark, Line Mark, and Mouse.

### Quit from *aimMaster EZ*

If your receiver is unplugged from the computer, the icon on the system tray will be hidden, but *aimMaster EZ* is still running. Please move the cursor above the *aimMaster EZ* icon on the system tray, click the RIGHT button  and then, LEFT click “quit” to exit from *aimMaster EZ*.



## TROUBLE SHOOTING

### **You can't use the mark pen when you press and hold the RIGHT button for more than 2 seconds**

You need to run *aimMaster EZ* exe file before you can enable the *aimMaster EZ*. Then you can press and hold the RIGHT button for more than 2 seconds to start using mark pen.

#### **Note:**

If you plan to use a computer not belonged to you, you need to store the *aimMaster EZ* exe file into a USB flash drive. Plug it into the computer that you want to use for the presentation, and double click this exe file before the presentation.

### **Computer does not respond to clicks on the presenter**

#### **1. The presenter red indicator does not flash when you click the presenter buttons**

- **The receiver is not plugged to the USB port of computer correctly**

Either the receiver is not plugged into the USB port of your computer, or the receiver is inserted into the USB port in the wrong direction. If the receiver is plugged to the computer of the USB port correctly, the blue indicator of the receiver should blink once.

- **The presenter batteries run out of electricity.**

Please change two new A4 batteries.

- **The laser pointer is still working**

The battery voltage might be too low although the laser pointer is still working. Please change another pair of new batteries.

#### **Notice:**

Please do not use rechargeable batteries on this product because they have lower voltage and will cause malfunctions.

#### **2. The presenter red indicator does not flash when you click the**

---



**presenter buttons. When you press and hold any button other than LASER for more than 1 second, the red indicator flashes for about 1 second:**

- **The receiver is not plugged into the computer.**

Plug the receiver into the USB port of your computer.

- **The receiver is plugged into the computer but it is plugged with wrong side.**

Remove the receiver and plug it into USB port again on the correct side – the blue indicator on the receiver will blink once if it is plugged in correctly.

- **The receiver does not pair with the presenter**

This situation happens if you use a receiver other than the one provided with your presenter. Please follow the instruction of pairing on Page 6.

### **Your cursor is moving too fast or too slow when you use the Mouse STICK of the presenter**

Please go to the control panel of your PC system to adjust the mouse speed.

### **You changed a new receiver**

You need to re-link the presenter and the receiver. Please follow the instruction of pairing on Page 6.

### **You can't install/use *aimMaster EZ* under Mac OS**

*aimMaster EZ* software is only for Microsoft® Windows® 2000/XP/Vista/7 currently. Under Mac OS, all the buttons of the presenter can work well without *aimMaster EZ*.