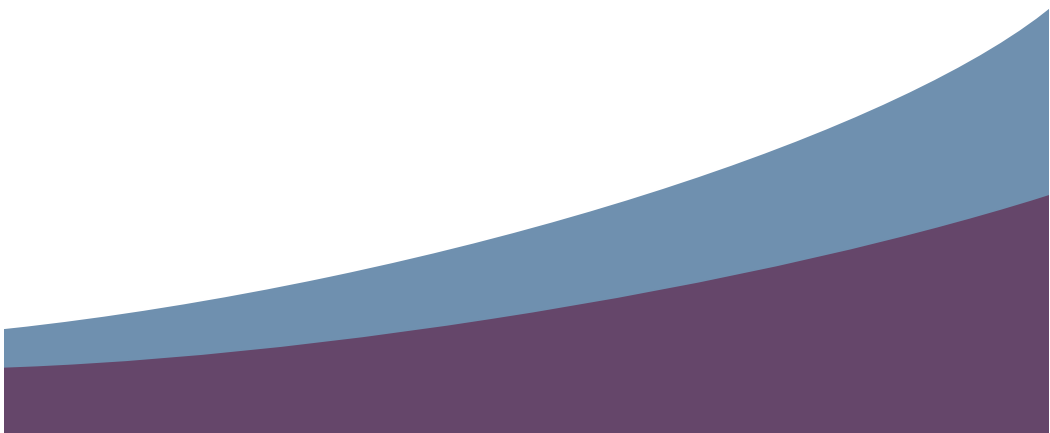


QBOX User's Manual



Trademark:

All trademarks are the property of their respective owners.

Version:

User's Manual V1.0 for QBOX.

P/N: 3A221HM00-000-G

Symbol description:



Caution : refers to important information that can help you to use QBOX better, and tells you how to avoid problems.



WEEE:

The use of this symbol indicates that this product may not be treated as household waste. By ensuring this product is disposed of correctly, you will help prevent potential negative consequences for the environment and human health, which could otherwise be caused by inappropriate waste handling of this product. For more detailed information about recycling of this product, please contact your local city office, your household waste disposal service or the shop where you purchased this product.

© All rights reserved.

All trade names are registered trademarks of respective manufacturers listed.

All images are for reference only, please refer to the physical product for specific features.



TABLE OF CONTENTS

Chapter 1 Introducing the QBOX

- Top View2
- Left View.....2
- Right View3
- Bottom View3

Chapter 2 Placing and connecting the QBOX

- Placement of QBOX
 - On the Desk5
 - Under the Display Base.....5
 - On the Backside of Display6
- Connection of QBOX
 - Connect the Monitor7
 - Connect the USB Devices.....7
 - Connect the Network Cable7
 - Connect the Power Cable8

Chapter 3 Using the QBOX

- First Boot10
- Desktop12
- Chinese Input Method12
- Computer.....13
- My Documents13
- Recycling Bin.....13

Chapter 4 Applications

- Internet
 - Web Browsing15
 - Files Transfer.....15
 - Instant Messaging15
- Office Applications
 - FOXOffice Base16
 - FOXOffice Calc16
 - FOXOffice Draw17
 - FOXOffice Impress.....17
 - FOXOffice Math.....17
 - FOXOffice Writer18

FreeMind	18
Education and Learning	
StarDict.....	19
Mtpaint.....	19
Multimedia Applications	
gThumb Picture Manager.....	20
CD Recording.....	20
Rhythmbox Music Player.....	21
Video Player	21
Other Applications	
Smart Helper	22
Package Updater.....	22
Basic Parameter Settings.....	22
Appendix - Install Windows XP in QBOX	23

Safety Precaution:



Before using this product, please read the safety precaution below carefully, and follow them strictly, this will increase the product's life, and avoid some danger.

- when the QBOX is working, please make sure the vents are expedite, so as to facilitate heat dissipation.
- The transformer may also produce a lot of heat during normal use as well, please keep it away from your body to prevent discomfort or injury from heat exposure.
- Please use the power adapter that comes with the product's package.
- Before using it, please make sure all the peripheral is connected validly.
- This product should only be used in environments with ambient temperatures between 5°C and 40°C.
- To reduce the risk of fire, use only No. 26 AWG or larger UL Listed or CSA Certified Telecommunication Line Cord.
- Always shut down the computer before installing or uninstalling the peripheral that do not support hot plug.
- Do not expose to or use near liquids or moisture.
- Do not use the modem during the thunder.
- Do not use the modem during the gas leak.
- If you find the power cord is tatty, please shut down the power at once, and connect with your vendor soon.
- Always disconnect all telephone lines from the wall outlet before servicing or disassembling this equipment.



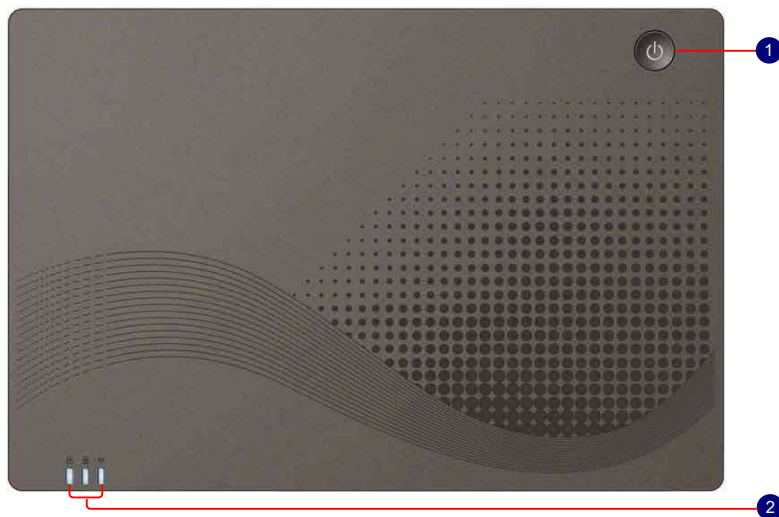
The QBOX is a compact and easy to use desktop. It is equipped with an intuitive graphical interface and full wireless connectivity so you can use the QBOX and access the Internet at any time.

This chapter includes the following information:

- Top View
- Left View
- Right View
- Bottom View

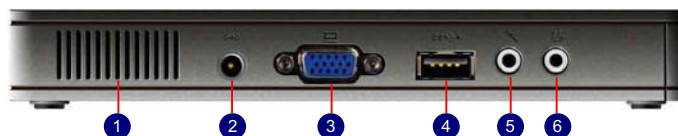
The QBOX is a compact and easy to use desktop. It is equipped with an intuitive graphical interface and full wireless connectivity so you can use the QBOX and access the Internet at any time. Provided below is an introduction to each part function.

1-1 Top View



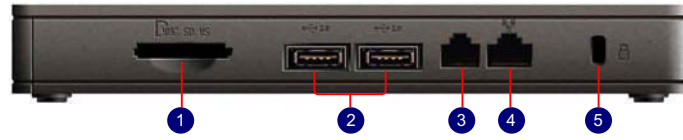
No.	Purpose	Description
1	Power Button	Turning the QBOX's power on/off
2	Computer Status Indicator LED	From left to right: Num Lock Indicator Caps Lock Indicator Wireless Network Indicator

1-2 Left View



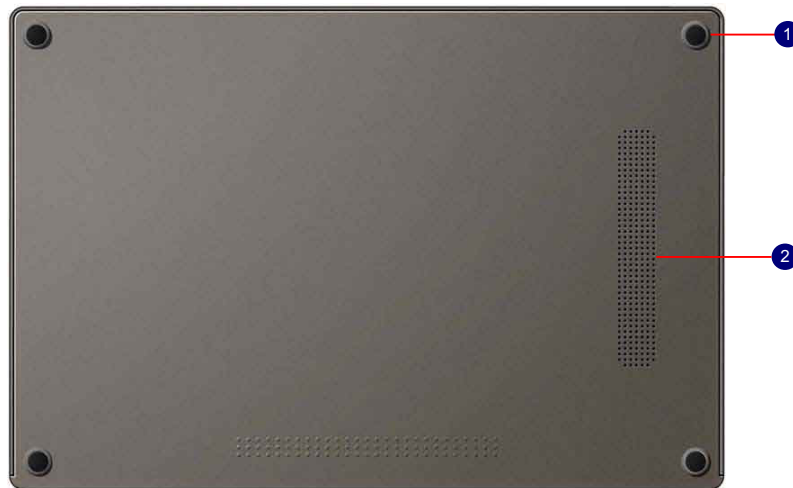
No.	Purpose	Description
1	Vent	QBOX's cooling vent
2	Power Port	Connects to the power supply transformer
3	Display Port	Connects to display
4	USB Port	Connects to USB 2.0 device
5	Microphone	Connects to microphone
6	Headphone	Connects to headphone or sound box

1-3 Right View



No.	Purpose	Description
1	Multi-Function Card Reader	Supports MMC/SD/MS memory card
2	USB Port	Connects to USB 2.0 device
3	Modem Port	Connects to telephone line. Used for dial-up Internet access via modem
4	Network Port	Standard RJ-45 network port
5	Anti-Theft Lock Slot	Connects to anti-theft lock

1-4 Bottom View



No.	Purpose	Description
1	Base tray	Prop and protect QBOX when it is placed on the desk
2	Vent	QBOX's cooling vent



In this chapter, the placement and the connection of some necessary peripheral will be introduced.

This chapter includes the following information:

- Placement of QBOX
- Connection of QBOX

2-1 Placement of QBOX

1. On the Desk

If there is enough space of your desk, you can simply put your QBOX on the tabletop as shown below, the top side is upturned.

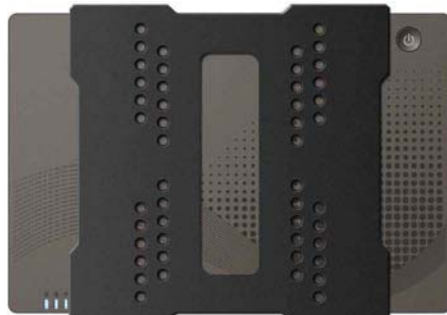


2

2. Under the display

If you want to save the space of your desk, this way can be used.

1. As shown below, put the QBOX into the bracket.



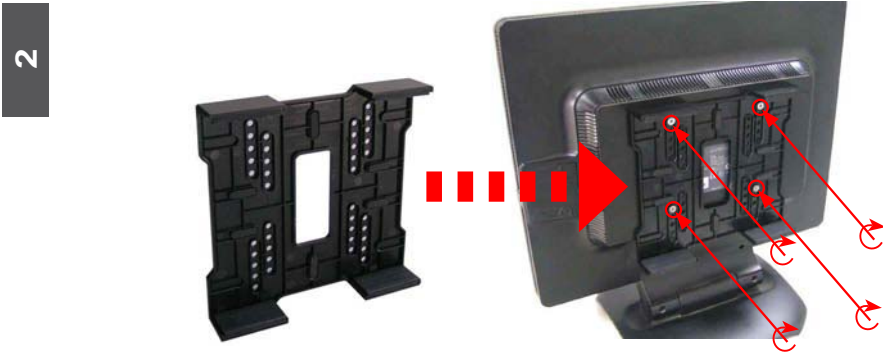
2. Keep the top side upturned, place the QBOX with bracket under the Liquid Crystal Display.



3. On the Backside of Display

This is a perfect way for good looking and space-saving.

1. Use four screws to fasten the bracket onto the display backside.



2. Keep the power button at the bottom, then put the QBOX into the bracket carefully.



To install the bracket, your display must accord with VESA75/VESA100 standard.

2-2 Connection of QBOX

1. Connect the Monitor

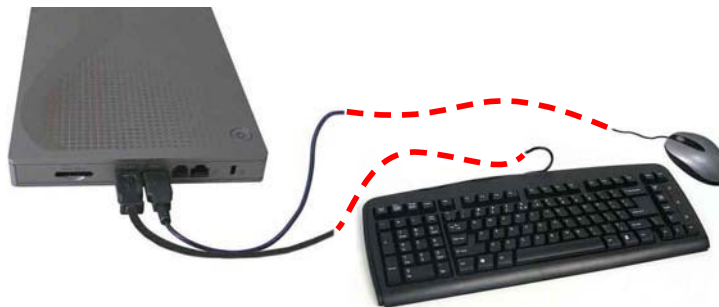
Connect the VGA cable, with VGA connectors on each end, to the VGA port on the QBOX, and the other end to a monitor.



2

2. Connect the USB Devices

Connect USB devices to the USB port on the QBOX, for example, Mouse and Keyboard.



3. Connect the Network Cable

If you want to obtain network access by using the built-in Ethernet controller, there are two ways for choosing.

1. Use the RJ-45 LAN port. Connect the RJ-45 cable, with RJ-45 connectors at each end, to the RJ-45 port on the QBOX and the other end to the hub or switch.



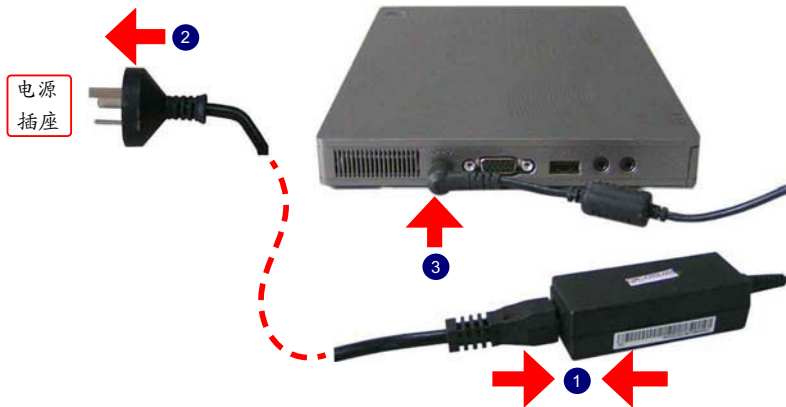
2

2. Use the RJ-11 port. Connect the RJ-11 cable, with RJ-11 connectors at each end, to the RJ-11 port on the QBOX and the other end to the modem.



4. Connect the Power Cable

Connect the adaptor and power cable that come with the package first (1), then connect the plug (2), and then connect the adaptor to the power port on the QBOX (3). Now, you can press the power button to start.





3

When you are using the QBOX for the first time, upon startup the computer will automatically launch "First Boot". This chapter will guide you through the setup and registration process, and introduces the QBOX Windows desktop to you.

This chapter includes the following information :

- First Boot
- Desktop
- Chinese Input Method
- Computer
- My Documents
- Recycling Bin

3-1 First Boot

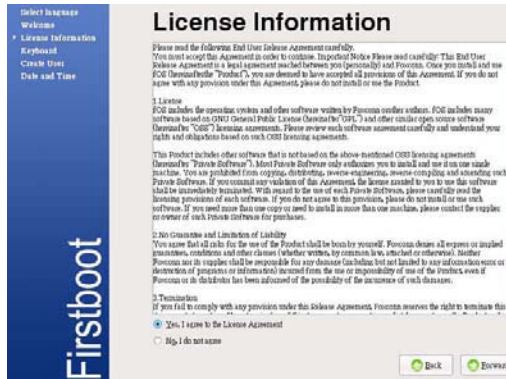
When you are using the QBOX for the first time, upon startup the computer will automatically launch "First Boot". This will guide you through the setup and registration process. Please follow the steps below to complete the initial setup process.

1. Set the appropriate Language then click on "Forward" to continue.

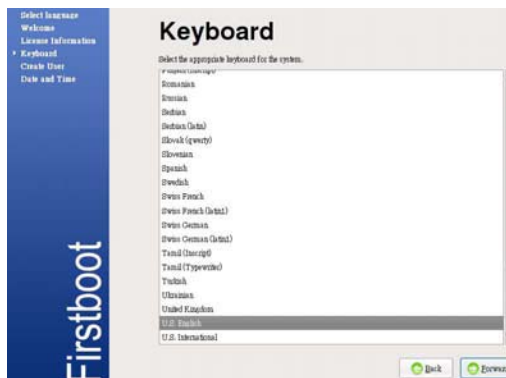
3



2. Scan the [Welcome] and press "Forward" to the [License Information], select "Yes" to continue.



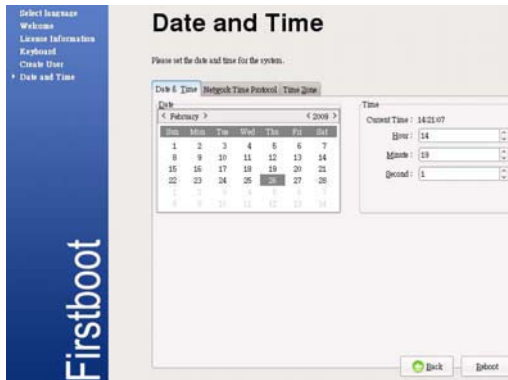
3. Set up the keyboard then click on "Forward" to continue



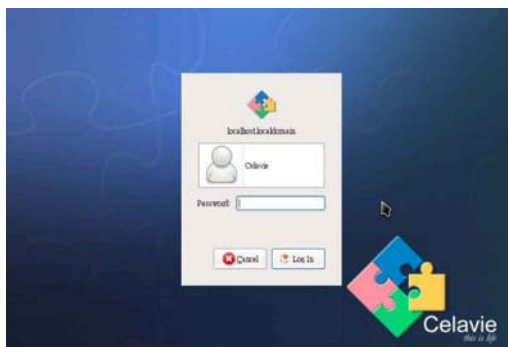
4. Create a user account then click on "Forward" when done.



5. Set the Date and Time then click on "Reboot" to complete setup and reboot the system.



6. The system will go to the login screen as below, select the user and input the password to login.



3-2 Desktop

After turning on the QBOX, when you log into QBOX's pre-loaded Celavie system, the following screen will appear:

Desktop Shortcuts – double-click to open the corresponding applications



Hard disk Icon: Shows the hard disk connection
 USB disk Icon: Shows the USB disk connection

Puzzle Icon: Start Button, Open program menu
 Screen Icon: Display the desktop/recover the minimized windows
 Earth Icon: Open Firefox browser

Bluetooth Icon: Shows bluetooth status
 Network Icon: Shows network connection status
 Keyboard Icon: Shows/switches the input method
 Speaker Icon: Adjusts volume
 Clock Icon: Shows/adjusts the system time



If a CD driver or USB disk is connected in the system, there will be an icon on the desktop and the system tray, for example, the 57.5 MB Media on the desktop is the USB disk icon.

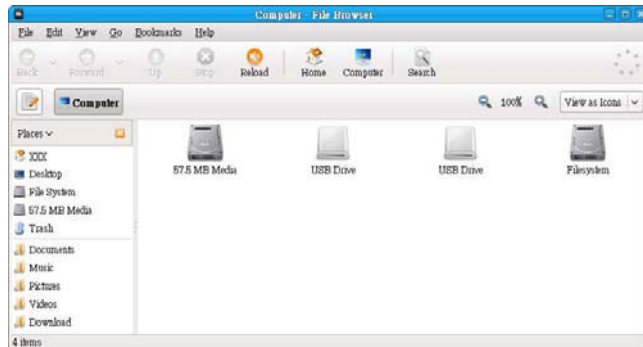
3-3 Chinese Input Method

When the user needs to input Chinese to a document, e-mail or search engine, they must switch to the Chinese input method. By default the system always uses the English input method. To switch the Chinese input method, select the desired application then "repeatedly" press <Ctrl> + <Shift> together to switch through different input methods. The current input method will be shown in the lower right of the screen. When the input method shown below appears, the corresponding input method is available for use.



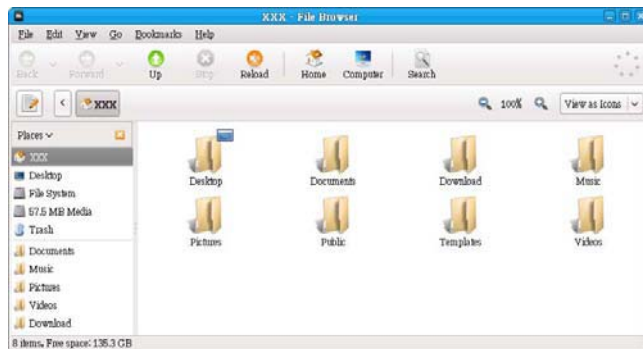
3-4 Computer

Click on the "Computer" shortcut on the desktop will bring a list of all devices on the QBOX (including HDD, USB driver). You can access these devices directly by clicking them on.



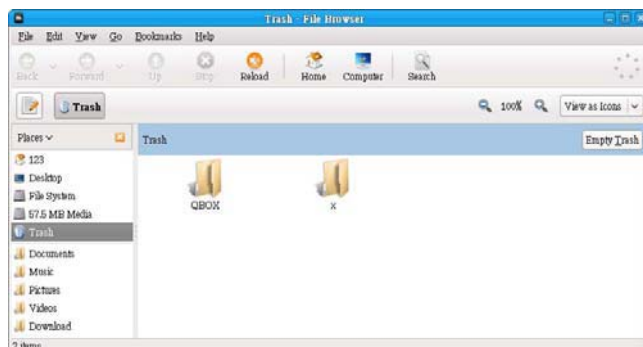
3-5 My Documents

The documents is by default used for storing the user's personal documents, videos or music. Double-click the "XXX" shortcut on the desktop brings up the screen shown below.



3-6 Recycling Bin

Deleted files are temporarily stored in the Recycling Bin. If you accidentally delete the wrong file you can restore the file from the screen shown below.





4

There are many useful applications are pre-loaded in the system, this chapter describes some kinds of them to you.

This chapter includes the following information:

- Internet
- Office Applications
- Education and Learning
- Multimedia Applications
- Other Applications

4-1 Internet

1. Web Browsing

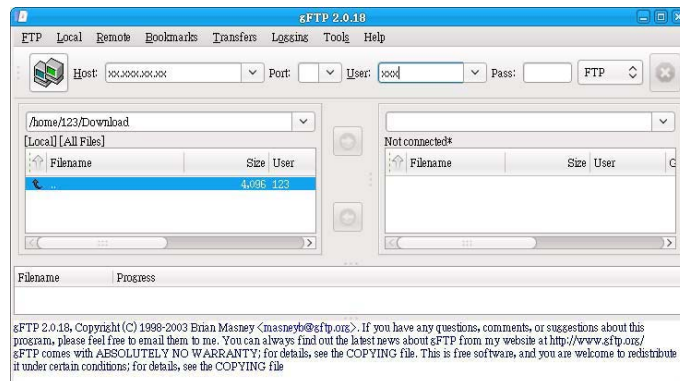
Please click on the "Earth" icon in the desktop toolbar or "Start" -> "Internet" -> "Firefox Web Browser" to open the web browser as shown below.



4

2. Files Transfer

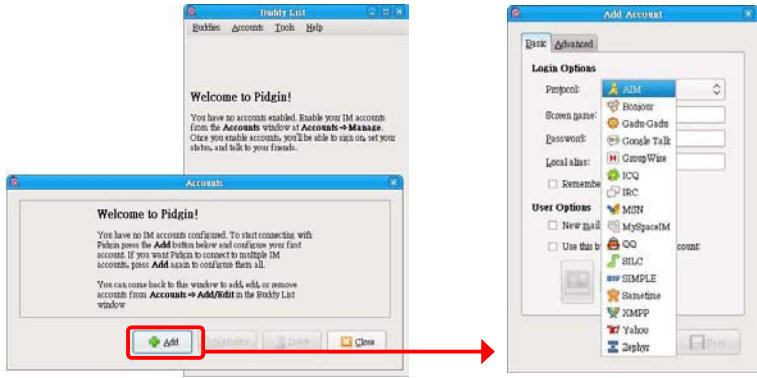
Please click on "Start" -> "Internet" -> "gFTP" from the desktop toolbar to open the gFTP client as shown below. "gFTP" is used for files transfer, you can upload or download files through multiple File Transfer Protocol (FTP, FTPS, HTTP etc.) by using it.



3. Instant Messaging

Please click on "Start" -> "Internet" -> "Internet Messenger" from the desktop toolbar to open the online instant messaging client as shown.

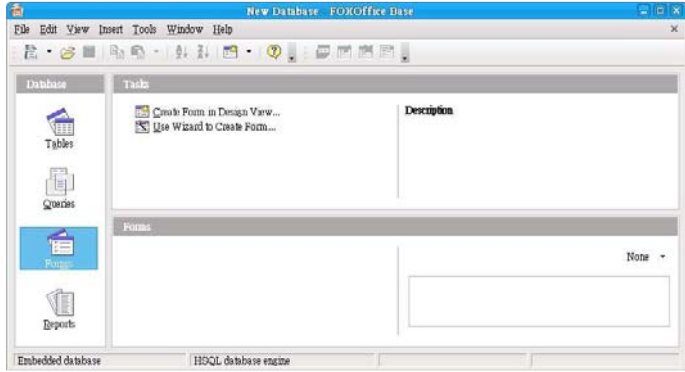
Please click on the "Add" button to add any type of instant messaging account (e.g. Yahoo Messenger, QQ, MSN etc.) as listed.



4-2 Office Applications

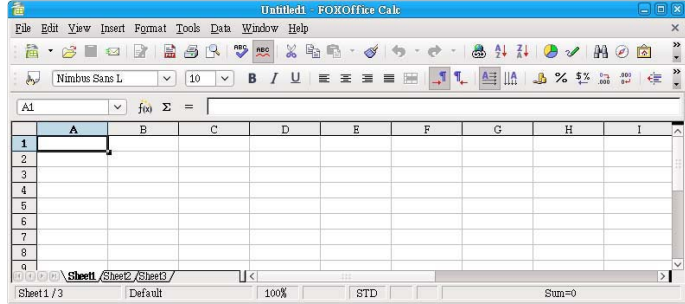
1. FOXOffice Base

FoxOffice Base is the office application used for managing databases. Please click on "Start"-> "Office" -> "FOXOffice Base" from the desktop toolbar to run the application. The program is as shown below.



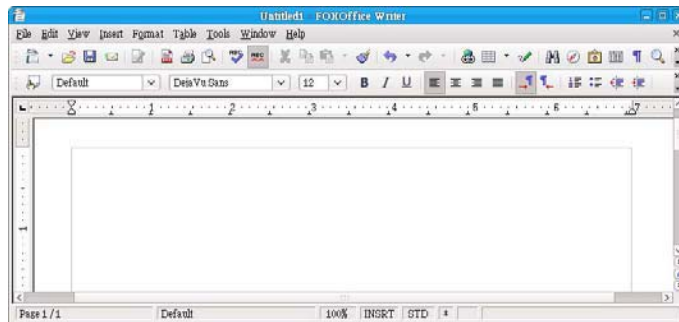
2. FOXOffice Calc

FoxOffice Calc is the office application used for spreadsheet calculations. Please click on "Start" -> "Office" -> "FOXOffice Calc" from the desktop toolbar to run the application. The program is as shown below.



6. FOXOffice Writer

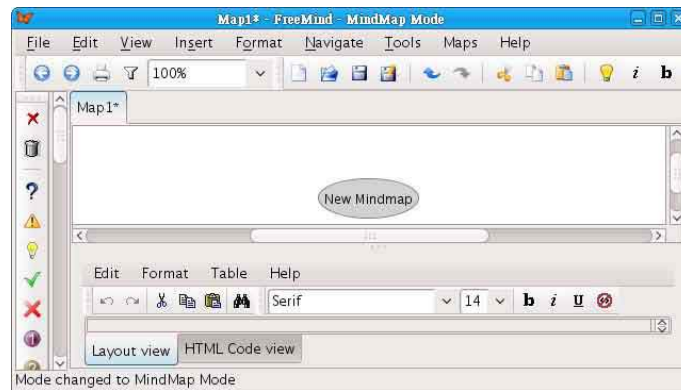
FoxOffice Writer is the office application used for word processing. Please click on "Start" -> "Office" -> "FOXOffice Writer" from the desktop toolbar to run the application. The program is as shown below.



4

7. FreeMind

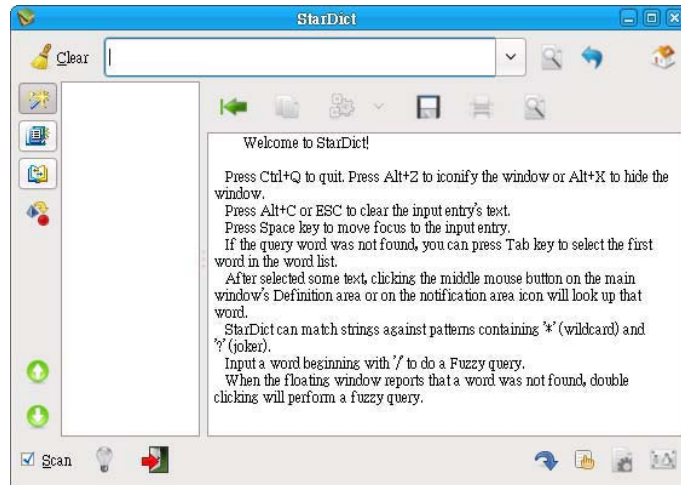
"FreeMind" is a visualization software that uses a tree diagram to record notes. The tree structure allows the user to quickly insert a record of any event at any node. Please click on "Start" -> "Office" -> "FreeMind" to run this application. The program is as shown below.



4-3 Education and Learning

1. StarDict

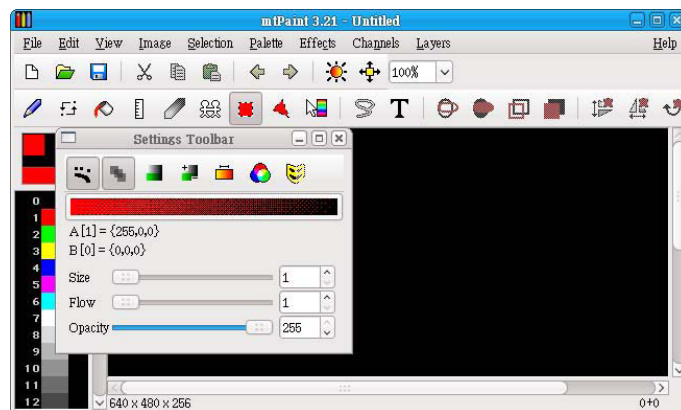
"StarDict" is a translation program. Please click on "Start" -> "Accessories" -> "StarDict" from the desktop toolbar to run this application. The program is as shown below.



4

2. Mtpaint

"Mtpaint" is graphics painting software similar to Windows Paint and is used for drawing or editing simple graphics. Please click on "Start" -> "Graphics" -> "Mtpaint" from the desktop toolbar to run this application. The program is as shown below.

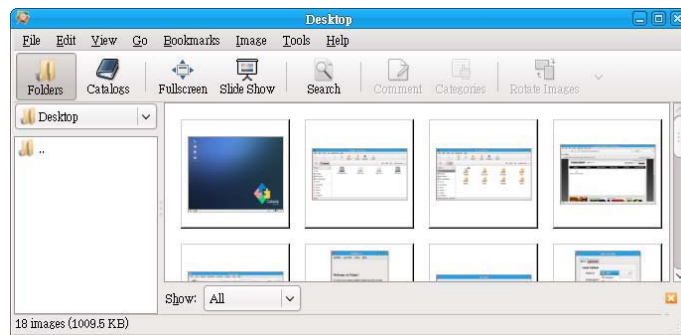


4-4 Multimedia Applicatios

1. gThumb Picture Manager

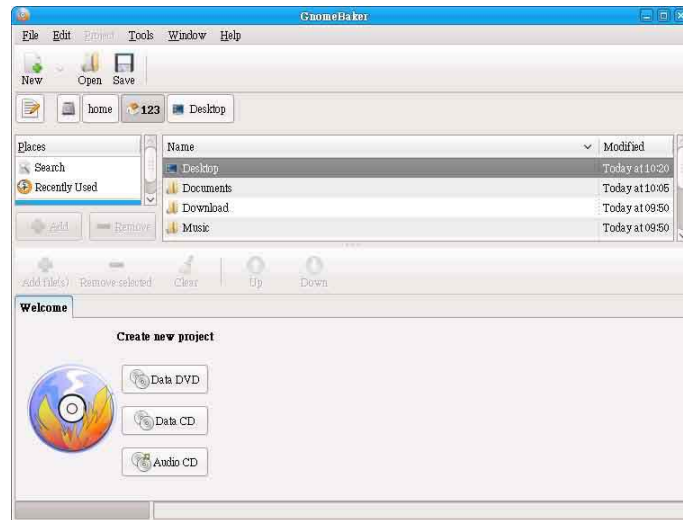
"gThumb Picture Manager" is a picture management tool with several functions. To use, please click on "Start" -> "Graphics" -> "gThumb Image Viewer" from the desktop toolbar. The program is as shown below.

4



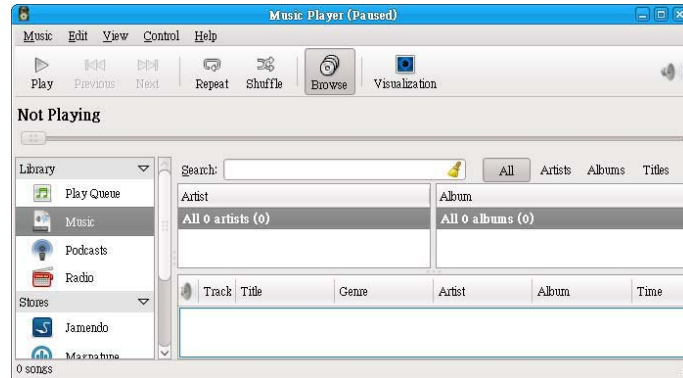
2. CD Recording

Celavie has full support for CD recorders. To use, please click on "Start" -> "Sound & Video" -> "Gnome Baker CD/DVD Writer" from the desktop toolbar. The program is as shown below.



3. Rhythmbox Music Player

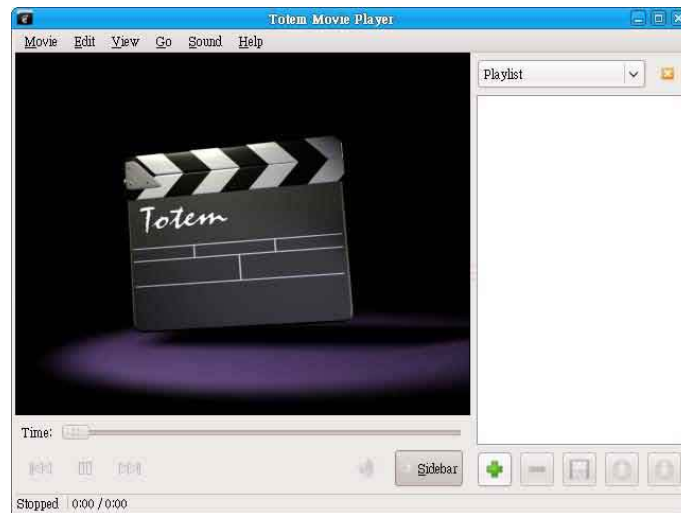
"Rhythmbox" is a music management program that allows music to be organized into play lists and can also stream radio broadcasts. To use, please click on "Start" -> "Sound& Video" -> "Rhythmbox Music Player" from the desktop toolbar. The program is as shown below.



4

4. Video Player

It is quite simple to use QBOX for playing videos. Simply load the disc or file into the QBOX then double left click to play. To use, please click on "Start" -> "Sound& Video" -> "Movie Player" from the desktop toolbar. The program is as shown below.



4-5 Other Applications

1. Smarthelper

"Smarthelper" helps the user install commercial applications and third-party add-ons on the QBOX. To use, please click on "Start" -> "System Tools" -> "Smarthelper" from the desktop toolbar. The program is as shown below.



4

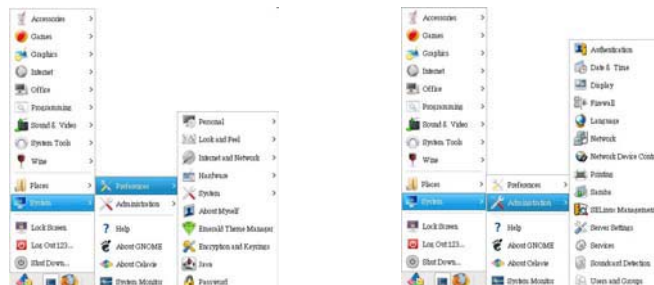
2. Package Updater

"Package Updater" is used for updating all software currently installed on the QBOX. If a newer version is available, it will be automatically downloaded and installed by Package Updater. To use, please click "Start" -> "System Tools" -> "Software Updater" from the desktop toolbar. The program is as shown below.



3. Basic Parameter Settings

Some basic parameter can be adjusted from the "Preferences" and "Administration" menu, for example, the personal information, preferences, mouse and keyboard parameter, volume, date and time, network connecting, language etc., click "Start"-> "System", then select the items you want to configure from the "preferences" or "Administration" menu.



Install Windows XP in QBOX

By default, the QBOX has been installed Celavie Operating System for you. But if you do not like the operation system interface, you can install Windows XP by yourself.

What kinds of hardware and software you need here :

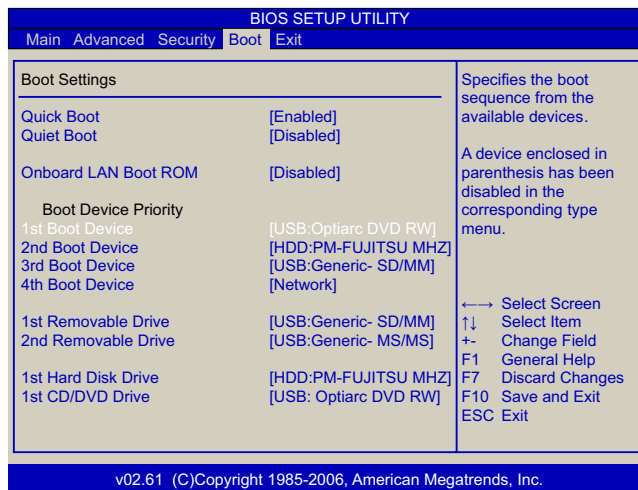
1. USB CD-ROM drive.
2. QBOX driver CD.
3. Windows XP Install CD.

Before we continue :

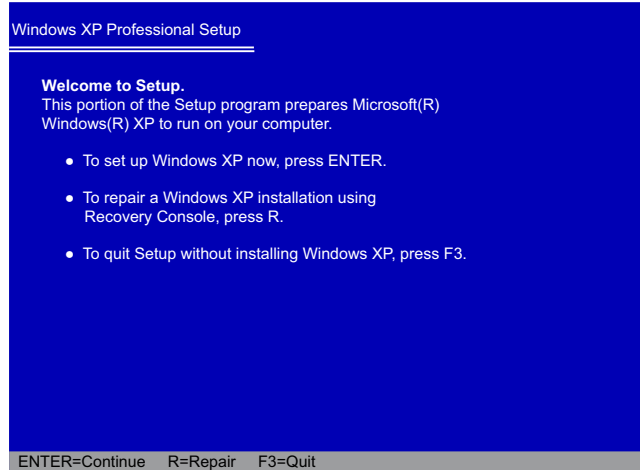
- Shut down your computer.
- Connect the USB CD-ROM drive to an USB port of QBOX and connect the power cord to AC power.

Install a New Windows XP

1. Press to enter BIOS Setup during POST.
2. Set the "1st Boot Device" to "USB CD-ROM" in "Boot", save changes and exit BIOS.
3. Insert the Windows XP Install CD into the USB CD-ROM drive.

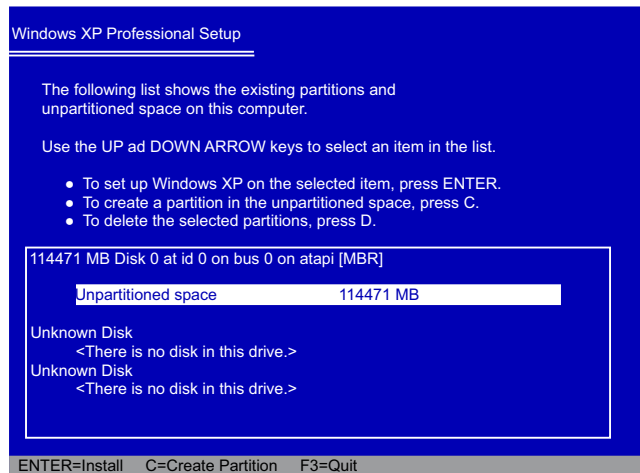


4. The computer will reboot, and it will start installing Windows XP Operating System.

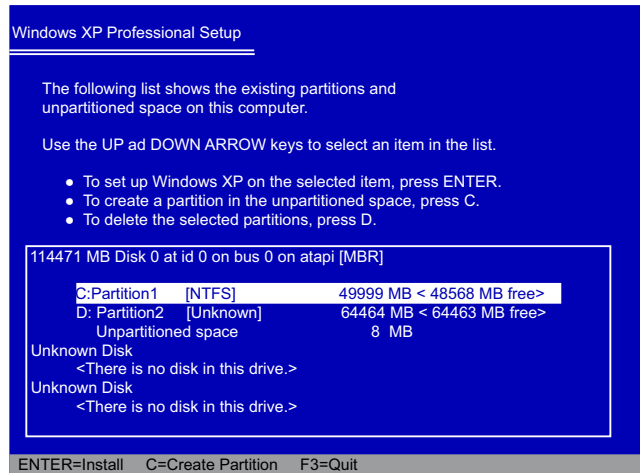


Appendix

5. Press <ENTER> to continue the installation.
6. Press <F8> to agree the Licensing Agreement and continue.
7. Windows will display the partition of your system. Firstly, you had better to press [D] to delete the partition, then you can press [C] to create partitions as many as you wish, assign them C:, D: or E: logical drive names.



8. In this example, we will create a 50GB partition C: and leave the remaining space as a partition D:. Press <Enter> to install Windows. The Windows XP install processes will ask you to format your hard disk, then copy files...etc. Follow the installation steps until the whole process is completed.



Install drivers in new Windows XP

1. When Windows XP is completely installed, you have to install necessary drivers before using the QBOX. Take out the Windows XP Install CD from the USB CD-ROM drive, and insert the QBOX driver CD.
2. Waiting for a few seconds, the main menu will be displayed on your QBOX screen.



3. Use these options to install all the drivers for your system. You must click "Intel Chipset Driver" to install it first. After that, you can click "One Click Setup" to install all the other drivers left, or you can click on each individual driver to install it manually.
4. After all the drivers are installed, you need to restart your QBOX, then you can use it.

Statement:

This device complies with part 15 of the FCC Rules. Operation is subject to the following two conditions: (1) This device may not cause harmful interference, and (2) this device must accept any interference received, including interference that may cause undesired operation.

Warning:**FEDERAL COMMUNICATIONS COMMISSION INTERFERENCE STATEMENT**

This equipment has been tested and found to comply with the limits for a Class B digital device, pursuant to part 15 of the FCC Rules. These limits are designed to provide reasonable protection against harmful interference in a residential installation. This equipment generates, uses and can radiate radio frequency energy and, if not installed and used in accordance with the instructions, may cause harmful interference to radio communications. However, there is no guarantee that interference will not occur in a particular installation. If this equipment does cause harmful interference to radio or television reception, which can be determined by turning the equipment off and on, the user is encouraged to try to correct the interference by one or more of the following measures:

- Reorient or relocate the receiving antenna.
- Increase the separation between the equipment and receiver.
- Connect the equipment into an outlet on a circuit different from that to which the receiver is connected.
- Consult the dealer or an experienced radio/ TV technician for help.

Caution:

Any changes or modifications not expressly approved by the grantee of this device could void the user's authority to operate the equipment.

RF exposure warning:

This equipment must be installed and operated in accordance with provided instructions and the antenna(s) used for this transmitter must be installed to provide a separation distance of at least 20 conform all persons and must not be co-located or operating in conjunction with any other antenna or transmitter. End-users and installers must be provide with antenna installation instructions and transmitter operating conditions for satisfying RF exposure compliance.