

*Notebook*

User's Guide

NB001

---

## **Preface**

The information in this document is subject to change without prior notice in order to improve reliability, design and function and does not represent a commitment on the part of the manufacturer.

In no event will the manufacturer be liable for direct, indirect, special, incidental, or consequential damages arising out of the use or inability to use the product or documentation, even if advised of the possibility of such damages.

This document contains proprietary information protected by copyright. All rights are reserved. No part of this manual may be reproduced by any mechanical, electronic, or other means in any form without prior written permission of the manufacturer.

## **Trademarks**

CardSoft is a trademark of SystemSoft Corporation. AutoCAD and Autoshade are trademarks of Autodesk, Inc. IBM, OS/2, and VGA are trademarks of International Business Machines Corp. Lotus, 1-2-3, and Symphony are trademarks of Lotus Development Corp. Windows, Word, MS-DOS, and Microsoft are trademarks of Microsoft Corp. VESA is a trademark of Video Electronics Standards Association.

Other product names mentioned herein are used for identification purposes only and may be trademarks and/or registered trademarks of their respective companies.

## **Limitation of Liability**

While reasonable efforts have been made to ensure the accuracy of this manual, the manufacturer and distributor assume no liability resulting from errors or omissions in this manual, or from the use of the information contained herein.

## **Federal Communications Commission Radio Frequency Interference Statement**

This device complies with Part 15 of the FCC Rules. Operation is subject to the following two conditions: 1. This device may not cause harmful interference; and 2. This device must accept any interference received, including interference that may cause undesired operation.

This equipment has been tested and found to comply with the limits for a Class B digital device, pursuant to Part 15 of the FCC Rules. These limits are designed to provide reasonable protection against harmful interference in a residential installation. This equipment generates, uses, and can radiate radio frequency energy and if not installed and used in accordance with the instruction manual may cause harmful interference to radio communications. However, there is no guarantee that interference will not occur in a particular installation. If this equipment does cause harmful interference to radio or television reception, which can be determined by turning the equipment off and on, the user is encouraged to try to correct the interference by one or more of the following measures:

- Reorient or relocate the receiving antenna.
- Increase the separation between the equipment and receiver.

---

●Connect the equipment into an outlet on a circuit different from that to which the receiver is connected.

●Consult the dealer or an experienced Notebook technician for help.

**NOTE:**FCC Radiation Exposure Statement:This equipment complies with FCC radiation exposure limits set forth for an uncontrolled environment.This transmitter must not be co-located or operating in conjunction with any other antenna or transmitter .

**NOTE:** Changes or modifications not expressly approved by FHX could void the user's authority to operate the equipment.

## **IMPORTANT**

Changes or modifications not expressly approved by the party responsible for compliance could void the user' s authority to operate the equipment. Shielded interface cables and a non-shielded AC power cord must be used in order to comply with emission limits.

This equipment is to be used with power supply:

I/P: 100-240V AC, 50-60Hz, 1.5A MAX

O/P: 19V DC, 3.4A

There is no internal power supply.

---

## Table of Contents

<b>Chapter 1: Before you Start.</b>	4
Conventions of This Manual.	4
Things you must remember before working on your computer.	8
<b>Chapter 2: Introduction.</b>	9
Getting to Know Your Computer.	9
<b>Chapter 3: Internet Connection.</b>	14
Using a wired LAN for Connection to Internet.	14
Using Both DHCP and Static IP for Connection to Internet.	16
Using Wireless LAN Network for Connection to Internet.	17
<b>Chapter 4: Running BIOS Setup.</b>	19
Introduction.	19
Navigating through BIOS Setup.	19
Accessing the BIOS Setup Program.	19
The Menu Bar.	19
The Legend Bar.	19
Launching Submenus.	20
General Help.	20
The Main Menu.	21
The Advanced Menu.	21
The Security Menu.	21
The Boot Menu.	22
The Exit Menu.	22
<b>Chapter 5: The Software Utilities Disks.</b>	24
AutoRun Installation.	24
<b>Chapter 6: Troubleshooting.</b>	25
Locating a Problem.	25
Checking Cables and Connections.	25
The Power-On Self Test.	26
General Hardware Problems.	26
Contacting Your Dealer.	27
<b>Appendix A: Specification.</b>	28
Detailed Notebook Specifications.	28

---

# Chapter 1

## Before you Start

### Conventions of This Manual

Use this manual will help you get the most from your notebook computer.

● If you are an experienced user of computers and/or Microsoft's Windows operating systems, you might find it useful to read the Quick Start Guide that comes along with your accessories.

● If you are a less experienced user, you should through the manual carefully before using your system.

Whether or not you are an experienced user, you should consult on the Troubleshooting Chapter if you encounter any problems with your notebook.

### Safety Precautions

This section is designed to assist you in identifying potentially unsafe conditions while working with this product. Required safety features have been installed in the computer to protect you from injury. However, you should use good judgment to identify potential safety hazards:

1. Please read these safety instructions carefully.
2. Please keep this User's Manual for later reference.
3. Please disconnect this equipment from AC outlet before cleaning. Don't use liquid or sprayed detergent for cleaning. Use moisture sheet or cloth for cleaning.
4. For pluggable equipment, that the socket-outlet shall be installed near the equipment and shall be easily accessible.
5. Please keep this equipment from humidity.
6. Lay this equipment on a reliable surface when installed. A drop or fall could cause injury.
7. Make sure to use the right voltage for the power source when connecting the equipment to the power outlet.
8. Place the power cord in such a way that people can not step on it. Do not place anything on top of the power cord.
9. All cautions and warnings on the equipment should be noted.
10. If the equipment is not use for a long time, disconnect the equipment from the main power outlet to avoid being damaged by transient overvoltage.
11. Never pour any liquid into the opening, this could cause fire or electrical shock.
12. Never open the equipment. For safety reason, the equipment should only be opened by a qualified service personnel.
13. If on the following situations arises, get the equipment checked by a service personnel:

- 
- a. The Power cord or plug is damaged.
  - b. Liquid has penetrated into the equipment.
  - c. The equipment has been exposed to moisture.
  - d. The equipment has not worked well or you cannot get it work according to the user's manual.

- e. The equipment has dropped and damaged.
- f. If the equipment has obvious sign of breakage.

14. Do not leave this equipment in an environment unconditioned, storage temperature above 60° C (140° f), it may damage the equipment.

15. The unit can be operated at an ambient temperature of max. 35° C.

16. The sound pressure level at the operators position according to IEC 704-1: 1982 is equal or less than 70 dB(A).

17. Power Cord Requirements The power cord set used with the AC adaptor must meet the requirements of the country where you use the AC adaptor, whether it is 100-120 or 200-240 Vac. The following information explains the requirements for power cord set selection.

- The cord set must be approved for the country in which it is used.
- The appliance coupler must have a configuration for mating with a CEE22/EN6032/IEC 320 appliance inlet.

A. For U.S. and Canada:

- The cord set must be UL Listed and CSA Certified.
- The minimum specifications for the flexible cord are No. 18 AWG.

B. For Japan:

● All components of the cord set must bear a "PSE" or "T" mark and registration number in accordance with the Japanese Dentori Law.

- The minimum specifications for the flexible cord are .75mm<sup>2</sup> conductors.

C. For Other Countries:

● The cord set fittings must bear the certification mark of the agency responsible for evaluation in a specific country.

● The cord set must have a current capacity of a least 2.5 Amperes and voltage rating of 125 or 250 Vac.

18. When using your telephone equipment, basic safety precautions should always be followed to reduce the risk of fire, electric shock and injury to persons. These precautions includes the following:

● Do not use this product near water, for example, near a bathtub, washbowl, kitchen sink or laundry tub, in a wet basement or near a swimming pool.

● Avoid using a telephone (other than a cordless type) during an electrical storm. There may be a remote risk of electric shock from lightning.

● Do not use the telephone to report a gas leak in the vicinity of the leak.

● Use only the power cord indicated in this manual.

19. Do not use the AC adapter near open water or other liquids. Never spill liquid into the AC adapter.

20. Laser Warning: Laser Class I Product Caution - Invisible laser radiation when

---

open avoid exposure to beam.

21. Danger of explosion if battery is incorrectly replaced. Replace only with the same or equivalent type recommended by the manufacturer. Dispose of used batteries according to the manufacturer's instructions. Never remove the battery pack while the power is on as this may result in data loss when the system loses power.

22. The input receptacle is used as the main disconnecting device.

## Wichtige Sicherheitshinweise

1. Bitte lesen Sie diese Hinweis sorgfältig durch.

2. Heben Sie diese Anleitung für den späteren Gebrauch auf.

3. Vor jedem Reinigen ist das Gerät vom Stromnetz zu trennen. Versenden Sie keine Flüssig- oder Aerosolreiniger. Am besten eignet sich ein angefeuchtetes Tuch zur Reinigung.

4. Die Netzanschlußsteckdose soll nahe dem Gerät angebracht und leicht zugänglich sein.

5. Das Gerät ist vor Feuchtigkeit zu schützen.

6. Bei der Aufstellung des Gerätes ist auf sicheren Stand zu achten. Ein Kippen oder Fallen könnte Beschädigungen hervorrufen.

7. Beachten Sie beim Anschluß an das Stromnetz die Anschlußwerte.

8. Verlegen Sie die Netzanschlußleitung so, daß niemand darüber fallen kann. Es sollte auch nichts auf der Leitung abgestellt werden.

9. Alle Hinweise und Warnungen, die sich am Gerät befinden, sind zu beachten.

10. Wird das Gerät über einen längeren Zeitraum nicht benutzt, sollten Sie es vom Stromnetz trennen. Somit wird im Falle einer Überspannung eine Beschädigung vermieden.

11. Durch die Lüftungsöffnungen dürfen niemals Gegenstände oder Flüssigkeiten in das Gerät gelangen. Dies könnte einen Brand bzw. Elektrischen Schlag auslösen.

12. Öffnen Sie niemals das Gerät. Das Gerät darf aus Gründen der elektrischen Sicherheit nur von autorisiertem Servicepersonal geöffnet werden.

13. Wenn folgende Situationen auftreten ist das Gerät vom Stromnetz zu trennen und von einer qualifizierten Servicestelle zu Überprüfung: a.

a. Netzlabel oder Netzstecker sind beschädigt.

b. Flüssigkeit ist in das Gerät eingedrungen.

c. Das Gerät war Feuchtigkeit ausgesetzt.

d. Wenn das Gerät nicht der Bedienungsanleitung entsprechend funktioniert oder Sie mit Hilfe dieser Anleitung keine Verbesserung erzielen.

e. Das Gerät ist gefallen und/oder das Gehäuse ist beschädigt.

f. Wenn das Gerät deutliche Anzeichen eines Defektes aufweist.

14. **VORSICHT:** Explosionsgefahr bei unsachgemäßen Austausch der Batterie. Ersatz nur durch denselben oder einem vom Hersteller empfohlenem ähnlichen Typ. Entsorgung gebrauchter Batterien nach Angaben des Herstellers.

15. Dieses Schaltnetzteil kann bis zu einer Außentemperatur von maximal 35°C.

16. Die Ausgangswerte dürfen nicht die auf dem Label angegebenen Werte

---

überschreiten.

#### 17. Anforderungen an das Stromkabel

Das Kabel-Set, das an das Netzteil angeschlossen wird, muss den Anforderungen des Landes, in dem Sie das Netzteil einsetzen, genügen, je nachdem, ob die Netzspannung 100-120 oder 200-240V Wechselspannung beträgt.

- Das Kabel-Set muss für das Land, in dem es eingesetzt wird, zugelassen sein.
- Der Gerätestecker des Kabels muss in eine CEE22/ EN603/ IEC 320 Buchse passen.

##### A. Für die USA und Kanada:

- Das Kabel-Set muss UL-gelistet und CSA zertifiziert sein.
- Die Minimalanforderungen für das Kabel entsprechen No. 18 AWG.

##### B. Für Japan:

● Alle Teile des Kabel-Sets müssen entsprechend dem japanischen Dentori Law mit einem „PSE“ or „T“-Symbol markiert sein

- Die Minimalanforderungen für das Kabel sind .75m m<sup>2</sup> Leiter.

##### ● Für andere Länder:

● Die Zubehörteile des Kabel-Sets müssen das Prüfsiegel derjenigen Stelle, die in dem jeweiligen Land für die Sicherheitsprüfung zuständig ist, tragen.

- Das Kabel muss vom HAR (harmonisierten) Typ H03VV-F sein.

● Das Kabel-Set muss eine Stromkapazität von mindestens 2,5 Ampere haben und Spannungen von 125 oder 250 V Wechselstrom gestatten.

18. Bei der Benutzung Ihres Telefongerätes sollten Sie immer die grundlegenden Sicherheitsmaßnahmen beachten, um das Risiko von Feuer, Stromschlägen und Verletzungen zu minimieren. Zu beachten sind u. a. folgende Punkte:

● Benutzen Sie das Gerät nicht in der Nähe von Wasser, wie zum Beispiel Badewanne, Waschbecken, Spülbecken, Waschtisch, in feuchten Kellerräumen oder in der Nähe von Schwimmbecken.

● Benutzen Sie kein Telefon (ausgenommen schnurlose Modelle) während eines Gewitters. Es besteht das geringe Restrisiko eines Blitzschlages.

● Benutzen Sie das Telefon nicht um ein Gasleck zu melden, falls es sich in der Nähe des Lecks befindet.

- Benutzen Sie nur solch ein Stromkabel, wie in dieser Anleitung beschrieben.

19. Benutzen Sie das Netzteil nicht in unmittelbarer Nähe zu Wasser oder anderen Flüssigkeiten. Gießen Sie nie Flüssigkeiten über das Netzteil.

20. Achtung Laser: Laser Produkt der Klasse I. Achtung - Unsichtbarer Laserstrahl, vermeiden Sie Kontakt mit dem Strahl bei offenem Gehäuse.

21. Es besteht Explosionsgefahr, wenn der Akku nicht ordnungsgemäß ersetzt wird. Ersetzen Sie den Akku nur durch einen Akku gleichen oder äquivalenten Typs, der vom Hersteller empfohlen wird. Entsorgen Sie Akkus entsprechend den Anweisungen des Herstellers. Entfernen Sie den Akku auf keinen Fall bei eingeschaltetem Notebook, da hierdurch Daten verloren gehen könnten.

22. Der Netzeingabeanschluss dient als Hauptschalter des Geräts.

**Things you must remember before working on your**



---

## computer

### Let your computer acclimate itself

Your notebook can easily stand temperature extremes but it doesn't like rapid changes in temperature, like going from the cold outdoors to a warm office. Rapid changes in temperature can cause water droplets to condense inside your case, threatening to damage the electronic parts inside.

After receiving your notebook when it's hot or cold outside, try not to power up the computer immediately, let the computer adjust to the room temperature gradually at least for three to four hours.

#### **WARNING**

If your system arrives in cold weather, do not apply power to the computer or monitor until they have been allowed to come to room temperature

#### **Heat, Cold, Humidity, and Glare**

Find a suitable place for your computer that's not too hot, too cold, too dark, or too bright. Glare can make it hard to read the screen.

- Try to avoid the computer components from being destroyed if it is over heated, so try to allow plenty of room for air to circulate around the case.

- Do not block the ventilation opening.

- Do not place your computer in direct sunlight.

#### **Suitable place to work**

Your computer will run well wherever you're comfortable but extremes of temperature and humidity can be challenging to your system's parts.

There are some things you can tolerate that the computer can't - things like static electricity, dust, water, steam and oil. In case you decide to pull over for roadside computing, try to choose a clean, comfortable work area for your system.

A lithium-ion battery pack will be available when you are traveling. If you are running your system for the first time on battery power, remove the battery from the package, install it into the system and recharge the battery to fully prepare for service.

---

# Chapter 2

## Introduction

There are more and more people spending large amounts of time in front of computer monitors now that scientists from many fields including anatomy, psychology, and occupational safety are involved in the study of ergonomically sound work environments.

A few tips to help you work effectively without a lot of physical discomfort:

- Purchase a chair with armrests and good back support. Don't slouch when sitting; keep your back straight.
- Try to place the LCD panel or external monitor so that there is little glare from the sun on the monitor.
- Walk around the room every hour.
- Every half hour look away from the computer screen for a few minutes.
- Place everything that you need to work within easy reach.

## Getting to Know Your Computer

### Opening the LCD Panel

At the front of the Notebook computer you will find a "Frame LCD" on the middle of the display panel for you to conveniently raise the LCD panel. ⌚

#### Standard Version

- Use your hand to pull up the "frame LCD".
- At any time you can tilt the display toward or away from you to a comfortable viewing position.
- Press on the Power button to start your computer.

#### Optional Version

●Raise the LCD panel and follow the correct procedures as shown on the illustration.

### WARNING

Please don't raise the LCD panel from the middle part since this is where the camera is located. The camera is a sensitive device that a strong pull might cause damage to it.

- At any time you can tilt the display toward or away from you to a comfortable viewing position.
- Press on the Power button to start your computer.

---

## Important Notices

### To avoid damage to the display panel:

- Try not to slam the display upon closing it.

### WARNING

For Optional model with camera: Please raise down the LCD panel carefully with your hand assisting the panel until it touches down. Try not to slam the display when closing it, this might damage the built-in camera.

### IMPORTANT

- Try not to place any object on top when it is closed or open.
- Be sure the system is turned off before you close the display panel.

With the LCD screen open, you will see several features important for operating your Notebook computer.



#### **1. Built-in Camera (Option)**

Press the camera button to capture the image with this built-in camera.

#### **2. Frame LCD**

At any time you can tilt the display toward or away from you to a comfortable viewing position.

#### **3. Keyboard**

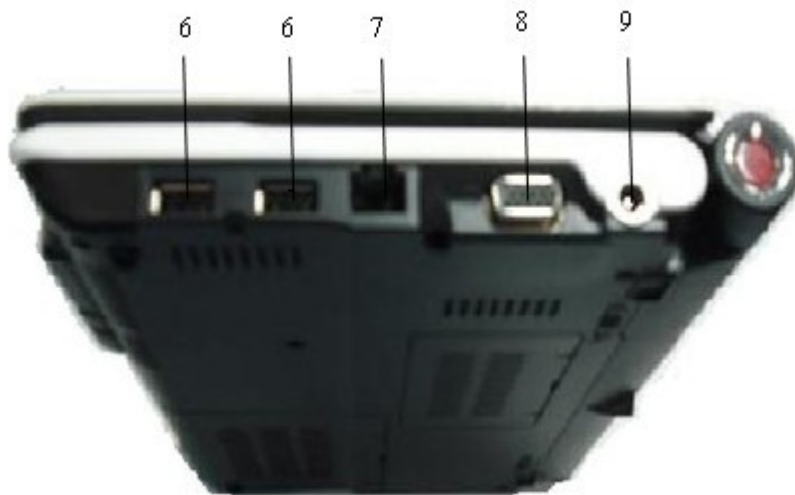
Input data

#### **4. Touchpad**

The PS/2 compatible mouse will work with the Notebook PC's TouchPad simultaneously.

#### **5. Touchpad Buttons**

The buttons below the TouchPad correspond to the left and right buttons on a standard mouse.



#### **6. USB Ports**

Your computer includes two Universal Serial Bus (USB) port.

#### **7. The LAN Port**

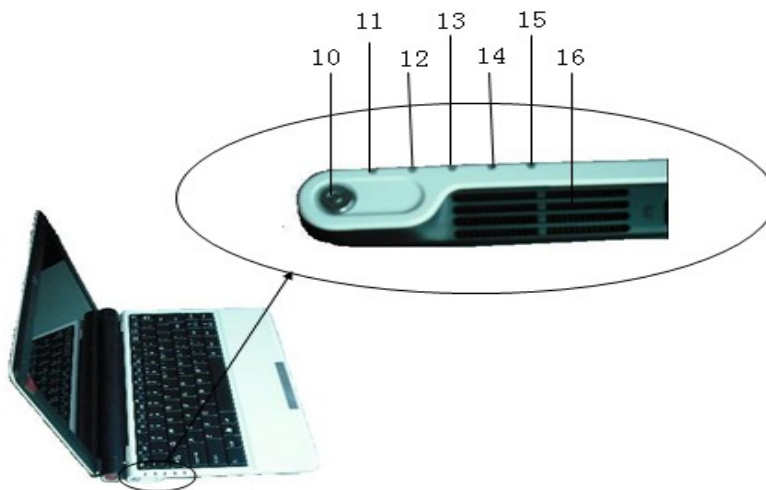
Connect to a high-speed 10Base-T Ethernet network.

#### **8. External CRT Port**

Connect to any external monitor.

#### **9. DC-In**

Plug the AC adapter into this connector.



#### **10. Power Button**

Turns your notebook on and off

#### **11. Power On**

This indicator will lit when the notebook is powered On.

#### **12. Battery Charge**

This indicator will lit red when the battery is in charging status. When the indicator light turns off, it indicates the system is in full charge.

#### **13. HDD**

Indicates that the computer is accessing the hard disk drive.

---

#### 14. WIFI Lock

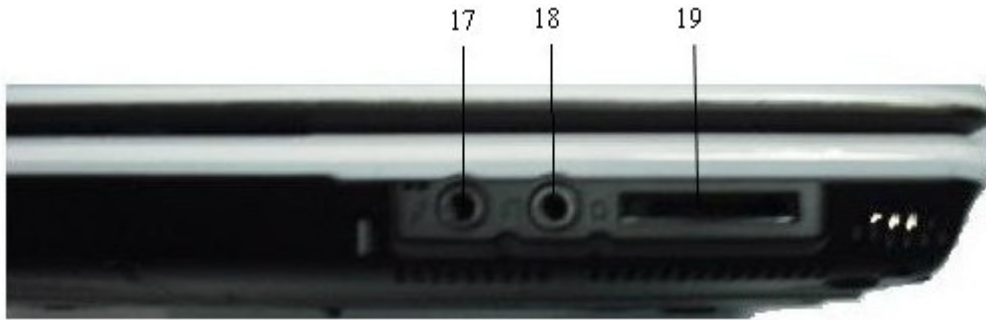
Wireless network card work.

#### 15. Caps Lock/Numeric Lock

Indicates when the keyboard is in Caps Lock mode/Indicates that the keyboard is in Num Lock mode.

#### 16. Ventilation Opening

Please don't block this opening during operation of the system.



#### 17. External Microphone Jack

Allows you to receive monophonic input from an external microphone

#### 18. Audio Line Out Headset Jack

You can plug an external speaker, headphone or connect the line out jack to an audio

#### 19. Card Reader

Supports 4-in-1 card reader slot (support SD/SDIO/MS/MS Pro card)



#### 20. Battery

Your notebook comes equipped with a factory-installed battery pack module.

#### 21. Battery Release Latch

Slide this latch to release the battery;Slide to lock the battery.

#### 22. Expansion Compartment

This compartment will serve as an expansion to upgrade your RAM module.

#### 23. HDD Compartment

---

Your computer includes a 2.5-inch IDE hard disk drive .

## The Notebook's Hot Key Controls

KEYS	FUNCTIONS
[Fn] + [Esc]	System to enter hibernation.
[Fn] + [F1]	Open/closure of the wireless LAN.
[Fn] + [F2]	Open/closure of the Bluetooth.
[Fn] + [F3]	This key combination turns on/off the volume..
[Fn] + [F4]	Enable/Disable the Mouse.
[Fn] + [F5]	This key combination toggles the display between the LCD, CRT, simultaneous LCD/CRT.
[Fn] + [F6]	Decreases the brightness level.
[Fn] + [F7]	Increases the brightness level.
[Fn] + [F8]	Decreases the speaker volume.
[Fn] + [F9]	Increases the speaker volume.
[Fn] + [F10]	Open/closure of the LCD.

## The TouchPad

The touchpad is a rectangular electronic panel located just below your keyboard. You can use the static-sensitive panel of the touchpad and slit it to move the cursor. You can use the buttons below the touchpad as left and right mouse buttons

### TouchPad Precautions

The TouchPad is a pressure sensitive device. Please take note of the following precautions.

- Make sure the TouchPad does not come into contact with dirt, liquids or grease.
- Do not touch the TouchPad if your fingers are dirty.
- Do not rest heavy objects on the TouchPad or the TouchPad buttons.

## LCD Care

LCD screens are delicate devices that need careful handling. Please pay attention to the following precautions:

- When you are not using the computer, keep the LCD screen closed to protect it from dust.
- If you need to clean your LCD screen, use a soft tissue to gently wipe the LCD surface.
- Do not put your fingers or sharp objects directly on the surface and never spray cleaner directly onto the display.
- Do not press on, or store any objects on the cover when it is closed. Doing so may cause the LCD to break.

---

## Chapter 3

### Internet Connection

There are numerous ways to connect to the Internet. This may vary from the user's working environment as well as system specifications.

- Using a wired LAN
- Using a wireless LAN

#### Using a wired LAN for Connection to Internet

For you connect to the Internet, a wired LAN environment normally uses the company's LAN or a broadband modem.

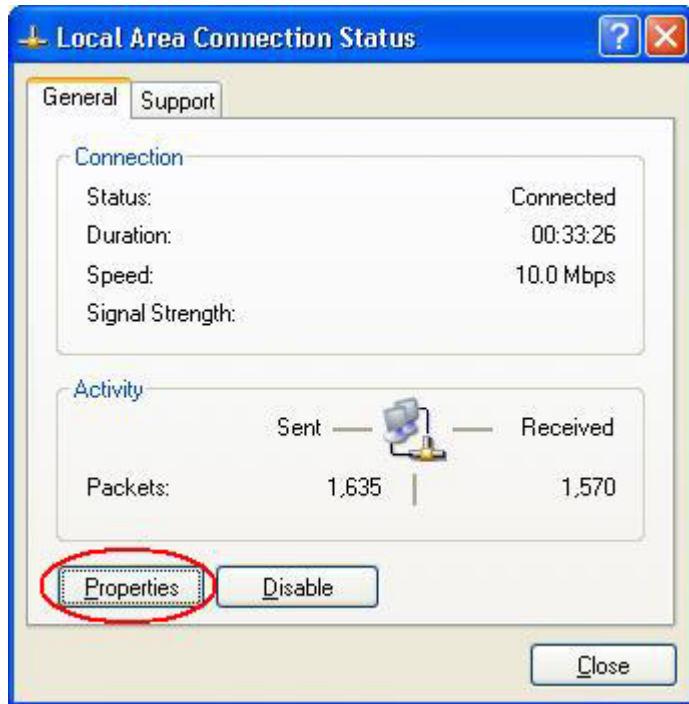
- Use the network (LAN) cable to connect to the LAN port of the system.
- Select on "My Network Places" and click on the "View Network Connection" in the "Control Panel" window.



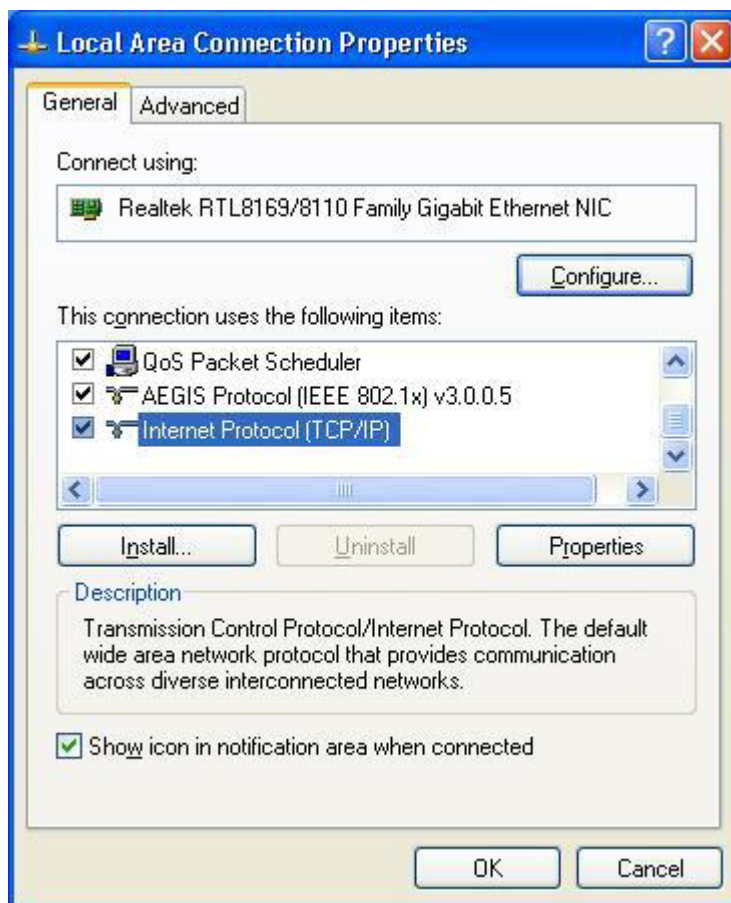
- In the "Network Tasks" window, use your mouse pointer to click on the "Local Area Connection"



- Select "Properties" from the popup menu that appears

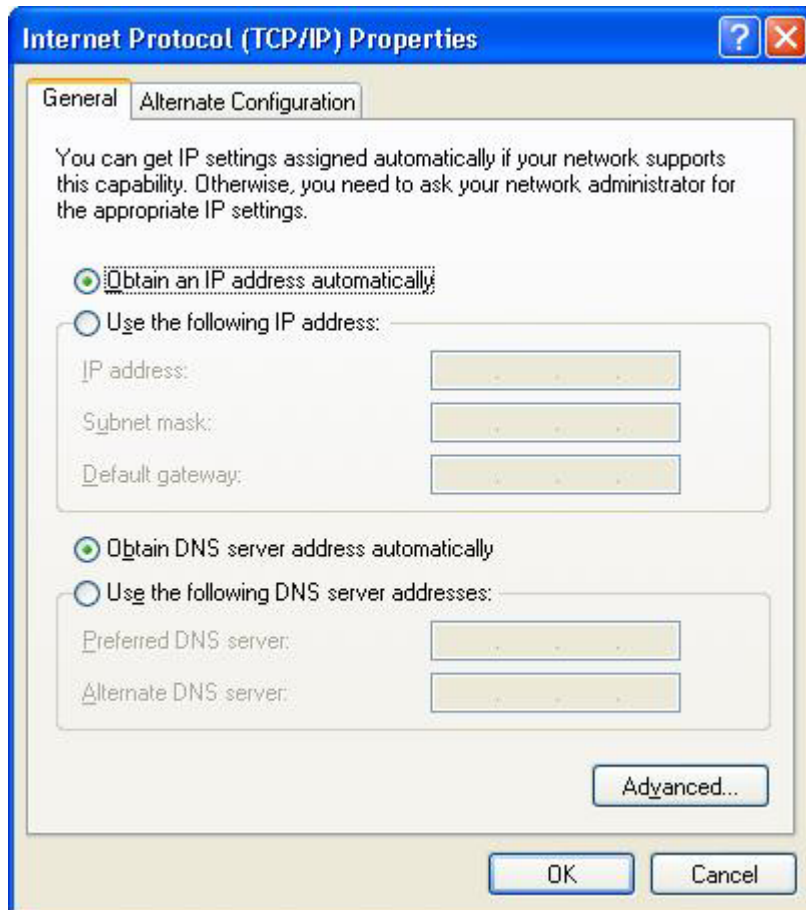


● In the “This connection uses the following items” field, select “Internet Protocol (TCP/IP), and click “Properties” .



● Enter the system’s IP and DNS server addresses on the General tab of the “Internet Protocol (TCP/IP) Properties” window. If DHCP is used, click “Obtain an IP address automatically” and “Obtain DNS server address automatically” on the General tab.





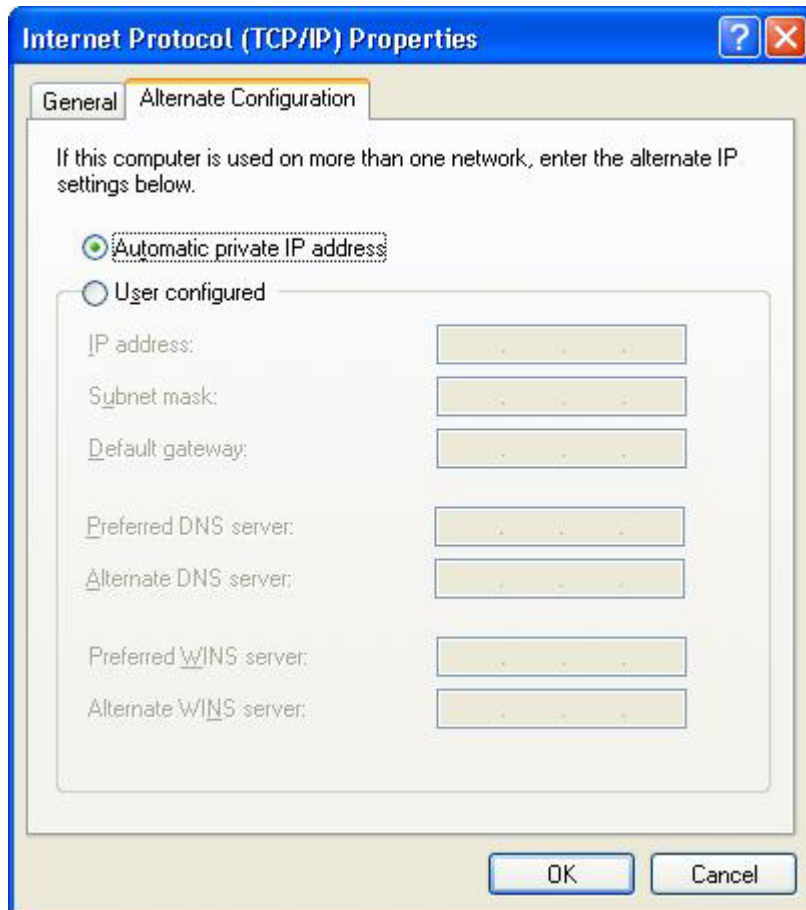
● After all the all the information are correctly entered in the “Internet Protocol (TCP/IP) Properties” window, click “OK” to finish.

## Using Both DHCP and Static IP for Connection to Internet

When you are alternatively using networks with either DHCP or static IP addressing, you can use alternative settings that enable simultaneous configurations of DHCP and static IP to use both of the network connects without reconfiguring.

● Follow the steps mentioned when you are using wired LAN connection from 1 to 7.

● Click on the “User configured” and enter the appropriate values in the “Alternate Configuration” tab.



- When you have completed the entire configuration, click “OK” .

## Using Wireless LAN Network for Connection to Internet

To start with the setup, be sure that the “Wireless” button on top of the keyboard is lighted in red color. Press it once to get the system connected when the button is lighted in blue color; the system is not connected when the button is not lighted. Please refer to an experience technician to solve this problem.

1.From Start, click on the "My Network Places" icon and click the "View Network Connection".

2.Select the “Wireless Network Connection” item from the “Network Connections” display window.

3.From the “Wireless Network Connection Status” display window, click on the “Properties” button.

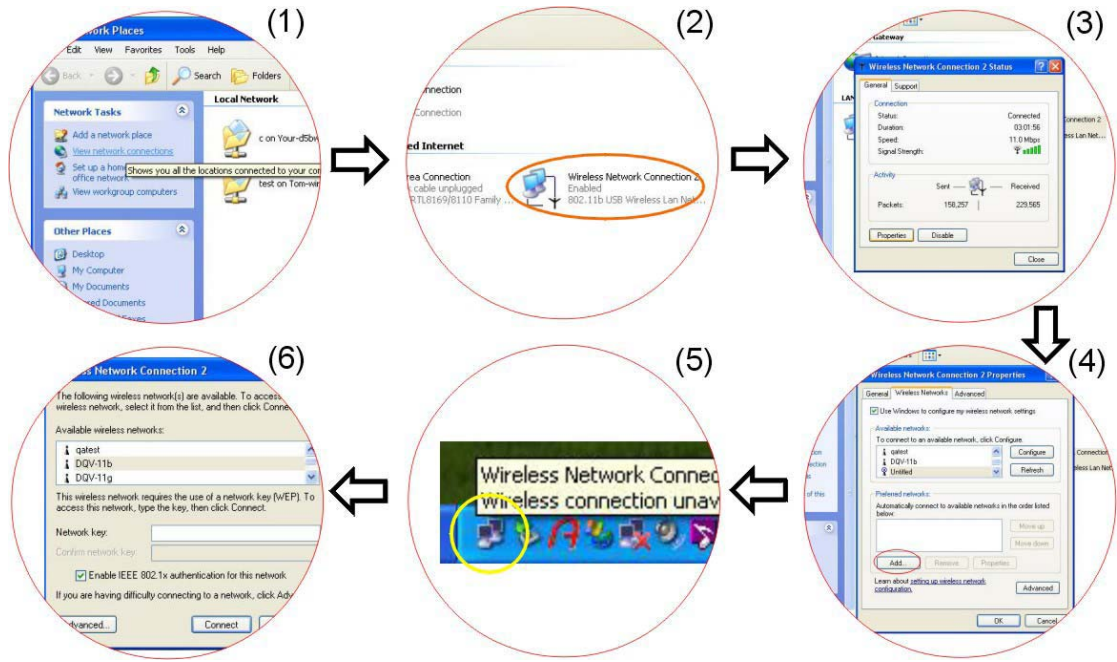
4.Select the “Wireless Networks” tab and enable the “Use Windows to configure my wireless network Settings” . Click “OK” .

5.A small icon will display on your lower right end of the Windows display.

6.Click on the icon and select the setting for the available network shown on the list and click on the “Connect” button.

### NOTE

For more detail on the Network key, please refer to your local ISP provider and follow the procedures describe in the “ISP Installation Guide” to proceed with the installation.



---

# Chapter 4

## Running BIOS Setup

### Introduction

The BIOS (Basic Input and Output System) Setup program is a menu driven utility that enables you to make changes to the system configuration and tailor your system to reflect installed hardware or alter system performance.

### Navigating through BIOS Setup

The Setup program has been designed to make it as easy to use as possible. If you accidentally make a setting and don't know which one to switch back to, the Setup program has a hot key that allows you to return to the previous value.

### Accessing the BIOS Setup Program

To access the BIOS Setup program, press the DEL key after the Notebook has run through its POST.

#### Item Specific Help

On the right side of the Setup screen is an area labeled Item Specific Help. This area will list navigation key shortcuts and information that is specific for the item that you are currently editing.

### The Menu Bar

The top of the screen has a menu bar with the following selections:

**Main** - Use this menu to make changes to the basic system configuration.

**Advanced** - Use this menu to enable and make changes to the advanced features available on your system.

**Security** - Use this menu to set a password. The password allows bootup and controls access to the BIOS setup menu.

**Boot** - Use this menu to configure the default system device used to locate and load the Operating System and for booting up the Notebook.

**Exit** - Use this menu to exit the current menu or specify how to exit the Setup program.

To access the menu bar items, press the right or left arrow key on the keyboard until the desired item is highlighted

### The Legend Bar

At the bottom of the Setup screen you will notice a legend bar. The keys in the legend bar allow you to navigate through the various setup menus.

The following table lists the keys found in the legend bar with their corresponding alternates and functions

Legend Key	Alternate Key	Function
F1		Displays the General Help window. It can be enabled from anywhere in the BIOS.
Esc		Jumps to the Exit menu or returns to the Main menu from a submenu.
←		Selects the menu item to the left.
→		Selects the menu item to the right.
↑ or ↓	Keypad arrow keys	Moves the cursor up and down between fields.
Tab	Enter	Moves the cursor to the next position available in the field.
Minus key (-)		Scrolls backward through the values for the highlighted field.
Plus key (+)		Scrolls forward through the values for the highlighted field.
Home	PgUp	Moves the cursor to the field at the top of the window.
End	PgDn	Moves the cursor to the field at the bottom of the window.
F9		Sets the parameters for the current menu to their default values.
F10		Save andExit.
Enter		Will select a sub menu or show a range of options for a field.

## Launching Submenus

Note that a right pointer symbol .. appears to the left of certain fields. This pointer indicates that a submenu can be launched from this field. A submenu contains additional options for a field parameter. To call up a submenu, simply move the cursor to highlight the field and press the [Enter] key. Use the [Esc] key to return to the Main menu.

## General Help

In addition to the Item Specific Help window, the BIOS Setup program also provides a General Help screen can be called up from any menu by simply pressing [F1].

Use the [PgUp] and [PgDn] keys or the up and down arrow keys (↑/↓) to scroll through the entire help document. Press the Home key to display the first page, press End to go to the last page. To exit the help window, press the [Enter] or the [Esc] key.

## Save Changes and Exit the Setup Program

Refer to the Exit menu section of this chapter for detailed information on saving changes and

exiting the setup program.

## The Main Menu

When the Setup program is accessed, the following screen appears:

BIOS SETUP UTILITY	
Main	Advance Security Boot Exit
<b>System Overview</b>	
Processor Type : Intel (R) Pentium (R) M processor 1.50GHz Speed : 1500MHz System Memory Size : 480MB	Use [ENTER], [TAB] or [SHIFT-TAB] to select a field.  Use [+] or [-] to configure system time.
System Time [00:18:12] System date [Fri 12/05/2003]	
▶ Primary IDE Master : [Hard Disk] ▶ Secondary IDE Master : [ATAPI CDROM]	←→ Select Screen ↑↓ Select Item + - Change Field Tab Select Field F1 General Help F10 Save and Exit ESC Exit
V02.53 ( C ) Copyright 1985-2002, American Megatrends, Inc.	

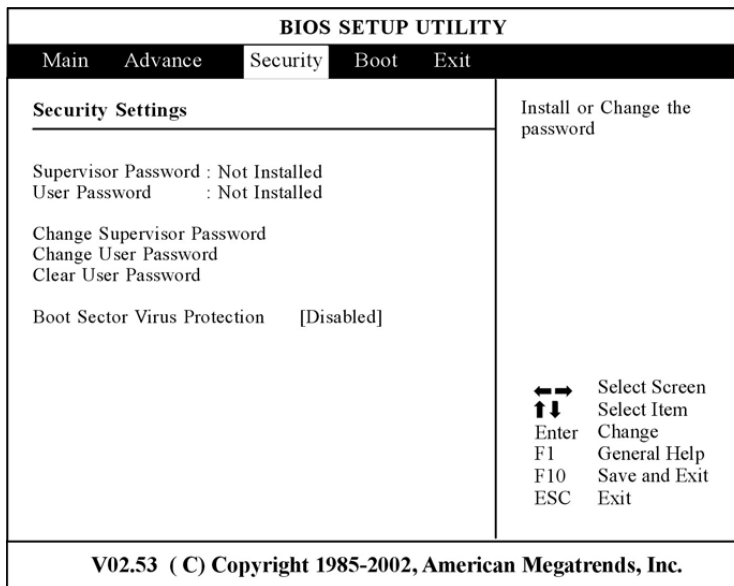
## The Advanced Menu

Selecting Advanced from the menu bar displays the Advanced menu:

BIOS SETUP UTILITY	
Main	Advanced Security Boot Exit
<b>Advanced Settings</b>	
<b>WARNING:</b> Setting wrong values in below settings may cause system to malfunctions	
Quick Boot [Enabled] Quiet Boot [Enabled] PS/2 Mouse Support [Enabled] Legacy USB Support [Enabled] AUTO DIM Supported [Enabled] Graphics Mode Select [Enabled, 32MB] A.P.S. Supported [Enabled]	Allows BIOS to skip certain tests while booting. This will decrease the time needed to boot the system.
	←→ Select Screen ↑↓ Select Item Enter Go to Sub Screen F1 General Help F10 Save and Exit ESC Exit
V02.53 ( C ) Copyright 1985-2002, American Megatrends, Inc.	

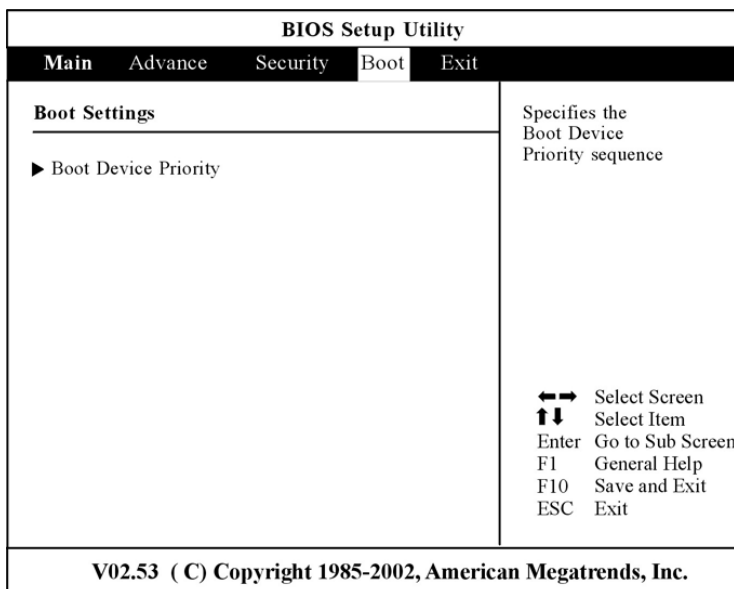
## The Security Menu

The Notebook' s advanced system of security allows you to set a password to prevent unauthorized access to system resources, data, and the BIOS Setup Program.



## The Boot Menu

The Boot menu allows the user to specify the order in which the Notebook is to check for a device to boot the system. You can also configure the way that the system will boot up. To make changes, select Boot from the menu bar. The following screen appears:



## The Exit Menu

Once you have made all of your selections from the various menus in the Setup program, you should save your changes and exit Setup. Select Exit from the menu bar to display the following menu:

BIOS Setup Utility				
Main	Advance	Security	Boot	Exit
<b>Exit Options</b> <hr/> Save Changes and Exit Discard Changes and Exit Discard Changes  Load Optimal Defaults Load FailSafe Defaults  Battery Calibration				Exit system setup after saving the changes.  F10 key can be used for this operation   ←→ Select Screen ↑↓ Select Item Enter Go to Sub Screen F1 General Help F10 Save and Exit ESC Exit
<b>V02.53 (C) Copyright 1985-2002, American Megatrends, Inc.</b>				



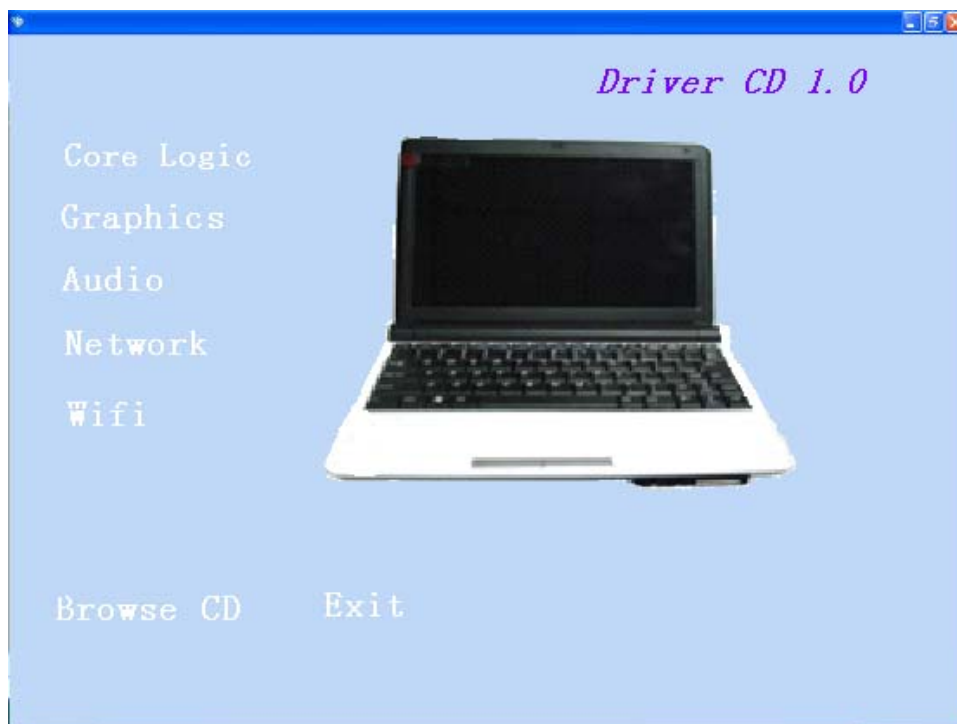
---

# Chapter 5

## The Software Utilities Disks

### AutoRun Installation

Follow the step-by-step procedures on the CD-ROM/DVD-ROM to execute the “AutoRun” application by selecting the “Setup”.



---

# Chapter 6

## Troubleshooting

This chapter describes locating and solving problems that you may encounter while using your computer.

### Locating a Problem

Problems with your computer can be caused by something as minor as an unplugged power cord – or as major as a damaged hard disk. The information in this chapter is designed to help you find and solve minor problems. If you try all the suggested solutions and you still have a problem, make a list of what steps you have taken to correct the problem and contact your dealer.

Successful troubleshooting is the result of careful observation, deductive reasoning, and an organized approach to solving the problem.

The problems that you will encounter can be divided into two basic categories: hardware problems and software problems. Hardware problems can be further divided into electrical and mechanical problems. You will know you have a hardware problem if the screen is dark, the computer cannot read the disk drives, or you get an error message during the Power-On Self Test (POST).

Software errors can occur at several levels. The ROM BIOS and the operating system can give you a large number of error messages. On top of this, each application software package has its own set of error messages. It is important to determine whether the software error message you are getting is from the application or the operating system. Once you know this, you can look in the respective manual for a solution to the problem.

### Checking Cables and Connections

Start by performing a careful visual inspection of the exterior of the computer. If no LEDs are illuminated, make sure that your computer and its peripherals are getting power and communicating with each other properly.

To check the power cables, and connections:

- 1.If you have been using battery power, connect the Notebook to an external power source and make sure that the battery has a charge.

- 2.If you are using the Notebook with the AC adapter, check the power outlet, the power cord, and any power switches that may affect your computer.

- Check the wall outlet or power strip with an item that you know is functioning properly. A lamp or radio is a convenient item for checking the power. You may also need to check the fuses and breakers in your electric box.

- If the outlet is controlled by a wall switch, make sure that the switch is on.

- If the outlet is controlled by a dimmer switch, use a different outlet.

- If your computer is plugged into a power strip with an On/Off switch, make sure the switch is on.

- 3.With the computer's power switched off, check all cable connections. If the computer is

---

connected to any peripheral devices, look for loose or disconnected cables.

If the computer is too close to a wall, a cable connection may be loose or the cables may be crimped.

#### WARNING

Do not substitute cables for different devices (other than the manufacturer recommended cables) even if they look exactly alike. The wiring inside the cable may be different.

4. When you are certain that you have power available and all connections are good, turn the computer on again. If the computer still does not start, you may have a hardware problem.

## The Power-On Self Test

The Power-On Self Test (POST) runs every time you turn on or reset the Notebook. The POST checks memory, the main system board, the display, the keyboard, the disk drives, and other installed options.

A few seconds after you turn on your computer, a copyright message appears on your display screen. A memory test message appears next; as the test continues, memory size increases until all installed memory is tested. Normally, the only test routine visible on the screen will be the memory test.

Two classifications of malfunctions can be detected during the POST:

- Error messages that indicate a failure with either the hardware, the software, or the Basic Input/Output System (BIOS). These critical malfunctions prevent the computer from operating at all or could cause incorrect and apparent results. An example of a critical error is microprocessor malfunction.

- Messages that furnish important information on the power-on and boot processes (such as memory status). These non-critical malfunctions are those that cause incorrect results that may not be readily apparent. An example of a non-critical error would be a memory chip failure.

In general, if the POST detects a system board failure (a critical error), the computer halts and generates a series of beeps. If failure is detected in an area other than the system board (such as the display, keyboard, or an adapter card) an error message is displayed on the screen and testing is stopped. It is important to remember that the POST does not test all areas of the computer, only those that allow it to be operational enough to run diagnostic programs.

If your system does not successfully complete the POST, but displays a blank screen, emits a series of beeps, or displays an error code, consult your dealer.

## General Hardware Problems

A few common hardware problems and suggested solutions are presented in the table below:

**Problem:** Failure in the installation of the Audio driver.

**Solution:** Be sure to first remove the current audio device from your system. Please follow the instruction on the installation of audio driver.

**Problem:** The display screen is dark

**Solution:** Make sure that the computer is not in Suspend mode. Check the Brightness controls for the screen. If the controls are turned too far down, the screen will be dark.

**Problem:** An incorrect date and time are displayed

**Solution:** Correct the date and time using the DOS DATE and TIME commands or the options in the Setup Utility. If the date and time become incorrect after a short time, your CMOS

---

battery may be depleted. Contact your dealer to change the battery.

**Problem:**The message: “Invalid system disk, Replace the disk, and then press any key” appears during boot.

**Solution:**Check and make sure that you do not have a non-bootable floppy diskette inserted in your floppy drive. If your USB FDD is empty, you may not have an operating system installed on your drive. Contact technical support for assistance.

**Problem:**You hear irregular beeps during operation of the Notebook and the system halts.

**Solution:**The problem is beyond the scope of this manual. Contact technical support.

**Problem:**An unidentified message is displayed.

**Solution:**Reboot the computer and run the BIOS system setup. Confirm the Setup parameters. If the same message is displayed after booting up again, contact technical support for assistance.

**Problem:**The system cannot access the CD-ROM/DVD-ROM drive.

**Solution:**Check that a CD is properly inserted in the drive. Make sure that you are using the correct program for that kind of CD. For example, the system cannot read a data CD using an audio program.

**Problem:**You cannot operate the printer.

**Solution:**Check the printer cable connection. Ensure that the printer power switch is turned on. Confirm that the printer is on-line.

**Problem:**You can't save data to disk.

**Solution:**Ensure that the disk has been formatted. Consult your operating system manual for information on formatting floppy diskettes.

**Problem:**The diskette is write-protected.

**Solution:**Eject the diskette, remove the write protection, and try again.

**Problem:**The diskette is full.

**Solution:**Try using another diskette or free up some space on the diskette. The disk drive is not operating. Contact your dealer for support.

**Problem:**You cannot use the mouse.

● Check the cable connection.

● Check the mouse with another application to see if there is a software incompatibility problem.

● If possible, check the mouse with another computer to see if it works. If it doesn't operate on a different system, the mouse might be broken.

## Contacting Your Dealer

If you still have a problem after reading the preceding sections, the next step is to contact your dealer. Your dealer can determine if the problem is something that requires the computer to be taken to the shop. Before you call your dealer, however, prepare the following information:

● How is your computer configured? Your dealer needs to know what peripheral devices you are using.

● What messages, if any, are on the screen?

● What software were you running at the time?

● What have you done already to try to solve the problem? If you have overlooked a step, your dealer may be able to solve the problem over the phone.

# **Appendix A**

## **Specification**

### **Detailed Notebook Specifications**

<b>Processor</b>	Intel N270 1600MHz
<b>Operating System</b>	Microsoft Windows 2000
<b>Compliance</b>	Microsoft Windows XP
<b>Core Logic</b>	Intel 945GSE
<b>Memory</b>	Expansion 1 slot DDR module, expandable up to 2GB system memory
<b>LCD Display</b>	10.2" Wide screen WXGA TFT Glare Type LCD display (1024 x 600; 16:10)
<b>Video &amp; Graphics</b>	Support Intel DVM (Dynamic Video Memory Technology) SMA up to 64MB DDR SDRAM
<b>Hard Drive</b>	2.5" 9.5mm height, 80/160GB HDD
<b>Pointing Device</b>	Synaptics touchpad
<b>Keyboard</b>	85 keys
<b>Interface Ports</b>	For Connectivity
	<b>Front Side</b>
	4 in 1 Card reader, Headphone, Mic-in
	<b>Right Side</b>
	USB 2.0 ports*2, LAN port, VGA - out port, DC-in
<b>AC Adapter</b>	Input: 100-240V AC, 50-60Hz, 1.5A MAX Output: 19V DC, 3.4A
<b>Battery</b>	3 cell Li-Ion battery pack 3 hrs charge time to 100% capacity by 3 cell Li-Ion battery pack while system off Approximately 2 hours by 3 cell Li-Ion battery pack
<b>Card Reader</b>	One 4-in-1 card reader slot (support SD/MMC/MS/MS Pro card)
<b>Communication</b>	10/100 Base-T LAN on board Intel PRO/Wireless 2100/2100A (MiniPCI solution) Built-in WLAN antenna CMOS camera with USB interface, Mega pixel resolution CMOS image
<b>USB Connector</b>	Two USB2.0 ports
<b>Size</b>	
<b>Weight</b>	