

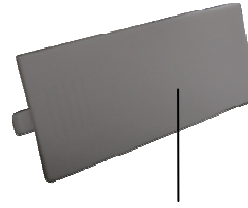
ESL User Manual

1. ESL Function Description:

ESL positive schematic:

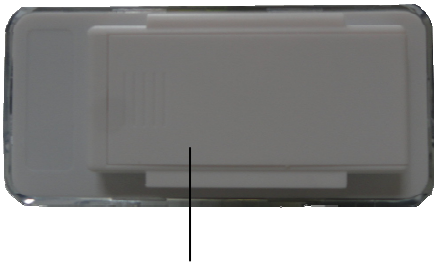


Screen of ESL

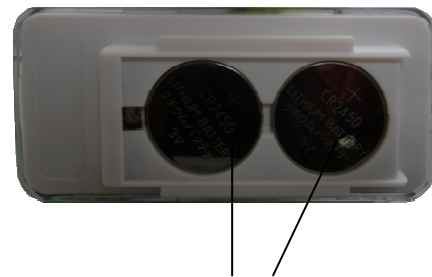


Rear cover of the battery

ESL back schematic:



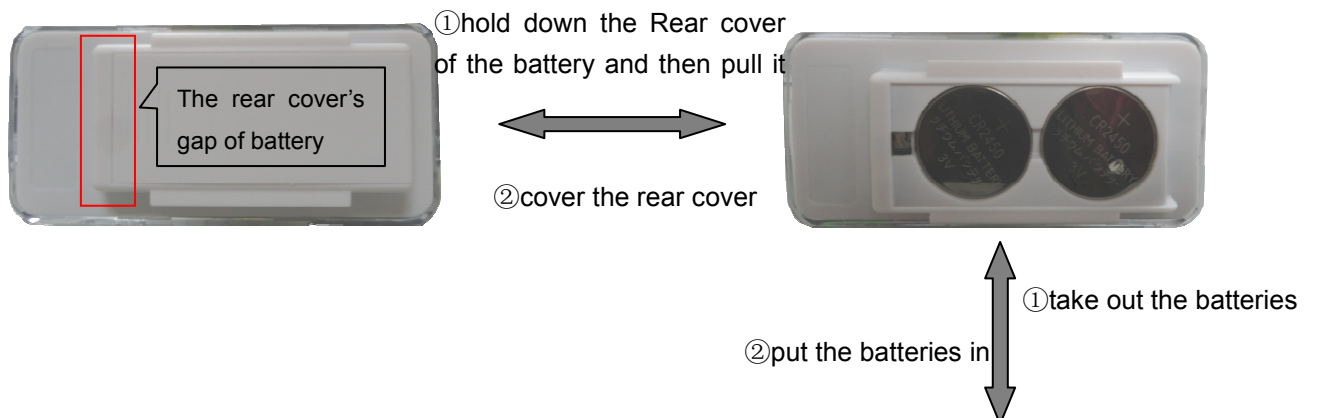
Battery compartments

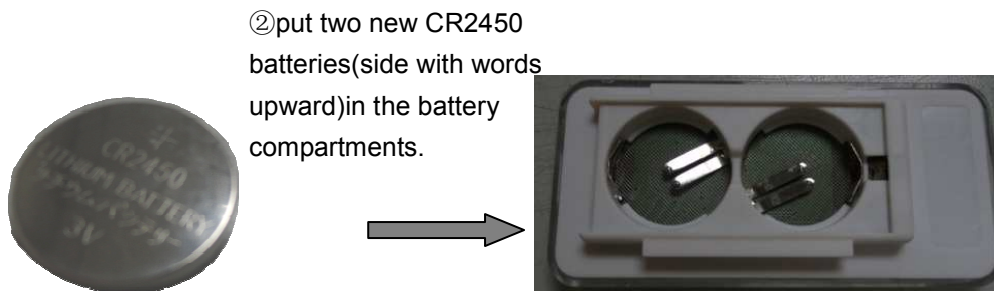


The battery (CR2450*2)

2. Battery replace:

Put the ESL on the desk with its back up→hold the Rear cover of the battery and then pull it out(in the opposite direction of the gap of the rear cover)→take out the battery→put two new CR2450 batteries (side with words upward) in the Battery compartments→cover the rear cover; As shown in figure 1.1:





② put two new CR2450 batteries (side with words upward) in the battery compartments.

① is the step of taking out the battery

② is the step of putting the batteries in;

FCC Statement

This equipment has been tested and found to comply with the limits for a Class B digital device, pursuant to part 15 of the FCC Rules. These limits are designed to provide reasonable protection against harmful interference in a residential installation. This equipment generates uses and can radiate radio frequency energy and, if not installed and used in accordance with the instructions, may cause harmful interference to radio communications. However, there is no guarantee that interference will not occur in a particular installation. If this equipment does cause harmful interference to radio or television reception, which can be determined by turning the equipment off and on, the user is encouraged to try to correct the interference by one or more of the following measures:

- Reorient or relocate the receiving antenna.
- Increase the separation between the equipment and receiver.
- Connect the equipment into an outlet on a circuit different from that to which the receiver is connected.
- Consult the dealer or an experienced radio/TV technician for help.

FCC Statement

This device complies with FCC radiation exposure limits set forth for an uncontrolled environment.

This device complies with Part 15 of the FCC Rules. Operation is subject to the following two conditions: (1) this device may not cause harmful interference, and (2) this device must accept any interference received, including interference that may cause undesired operation.

Caution!

Any changes or modifications not expressly approved by the party responsible for compliance could void the user's authority to operate the equipment.