



User Guide BPBR30/RGBW/AG/2

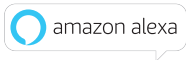


User Guide For Feit Electric App.

Set up instructions for Alexa & Google Home.

Smarter More Helpful Home Light Bulbs That Work with Alexa or Google Home

Easily turn lights On/Off, dim, set groups and schedules. Choose energizing daylight or wind down with relaxing soft white light. Get creative with color, it's all up to you. Control lighting with simple voice commands and an intuitive mobile app. Set up is simple. The bulbs connect directly to your WiFi at home. It has never been easier to customize your home's lighting to suit your lifestyle.



1

Getting Started



Download the Feit Electric App from the Apple App StoreSM or Android Google PlayTM store.

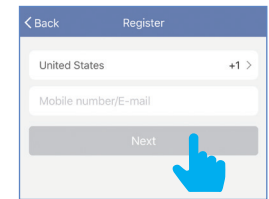
2

Launch the App and tap **“Register”** for new accounts or **“Login”** for existing accounts.



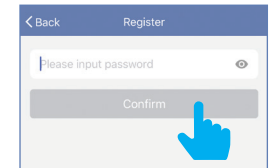
3

Enter Mobile Number or E-Mail address, then tap **“Next”**.
(A verification code will be sent to your device if using a Mobile Number.)



4

Create a Password then tap **“Confirm”**.

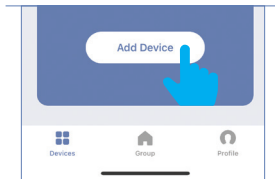


Adding Devices

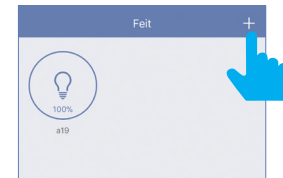


5

Install & power On bulb(s)
then tap **"Add Device"**.



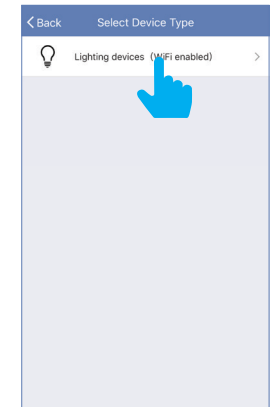
To add additional devices
tap the **plus (+)** sign in the upper
right hand corner under Devices.



6

Make sure you are connected to
a **2.4GHz WiFi Network** then tap on
the **"Lighting devices (WiFi enabled)"**.

Not Compatible with 5G Wifi Networks



7

Power On the bulb(s) and confirm the light(s) is blinking. Then tap **“Confirm that the light blinks rapidly”**.

Note: If the bulbs are not blinking, turn bulbs ON-OFF-ON-OFF-ON.



8

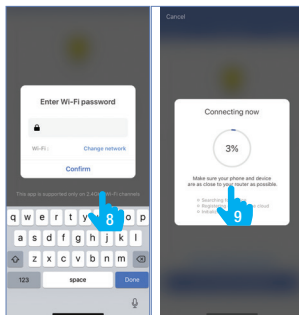
Choose a 2.4GHz WiFi network and enter the WiFi password, then tap **“Confirm”**

Note: Only works with 2.4GHz WiFi networks.

9

The status window will appear once the device(s) have successfully connected and the 3 bullets on the bottom will turn green.

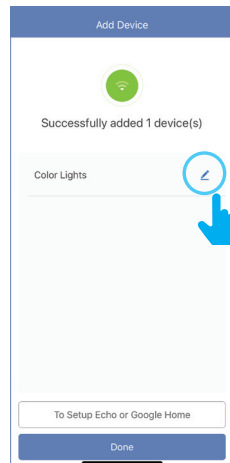
Note: If unsuccessful, the **“Failed to Add”** screen will appear. Close the App and repeat the previous steps.



10

To rename the bulb(s), tap the **“Pen”** icon, enter the new name and tap **“Done”**. The bulb(s) are now ready to be controlled with the Feit Electric App.

Note: Constant power to the bulb(s) is required at all times.



Features



Dimmable



Tunable White



Color Changing



Schedule

Individual Bulb On/Off

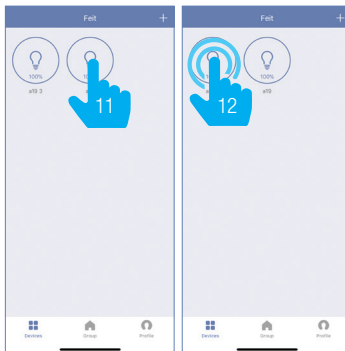
11

Tap the bulb icon to turn the bulb On/Off.

12

Individual Bulb Setting

Press and hold the icon for 2 seconds for bulb settings.



Dimming

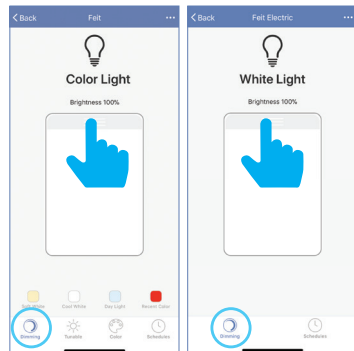
13

Slide the dimming bar up or down to set the brightness level.

Select a preset color temperature or the last color used.

(Multi-Color + Tunable White)

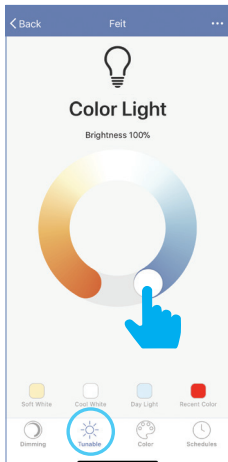
(White)



Tunable White

14

Use the round slider to adjust color temperatures from Warm (2700K) to Cool (6500K).



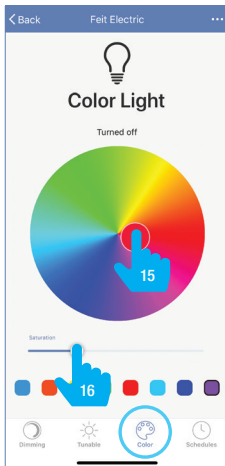
Color Changing

15

Tap on any part of the color picker to select a desired color or choose a preset color.

16

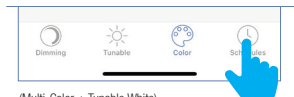
Use the slide bar to adjust the color saturation.



Schedule

17

Tap on "Schedule"



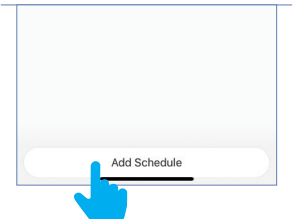
(Multi-Color + Tunable White)



(White)

18

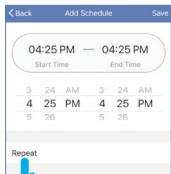
Tap "Add Schedule".



19

Choose a Start Time (On) and End Time (Off).

To repeat on certain days of the week tap **"Repeat"**, otherwise the schedule will only occur once.



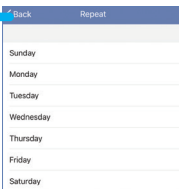
04:25 PM		04:25 PM	
Start Time		End Time	
3	24	3	24
4	25	4	25
5	26	5	26

Repeat



20

Tap on the day(s) of the week you would like the schedule to repeat. Then tap **"Back"** then **"Save"**.

Back Repeat

- Sunday
- Monday
- Tuesday
- Wednesday
- Thursday
- Friday
- Saturday

Additional Features



Modify Device Name



Device Sharing



Use Echo or Google Home



Grouping



Remove Devices

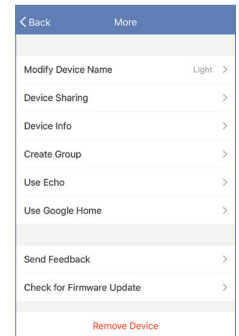
21

Additional features are available in the bulb settings context menu, including renaming and removing devices. Tap the context menu in the upper right corner (•••).



Back Feit

a19



Back More

- Modify Device Name Light >
- Device Sharing >
- Device Info >
- Create Group >
- Use Echo >
- Use Google Home >
- Send Feedback >
- Check for Firmware Update >
- Remove Device

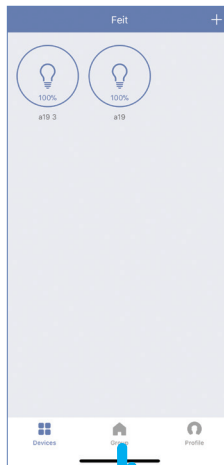
Creating Groups



22

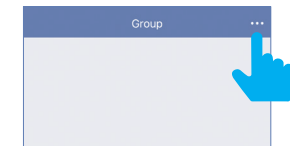
To create groups, tap on the “Group” icon at the bottom of the App.

Note: To create groups you will need at least 2 bulbs.



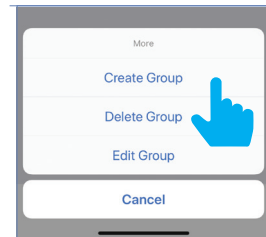
23

Tap the context menu in the upper right corner (•••).



24

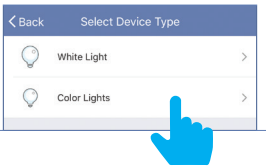
Tap on “Create Group”.



25

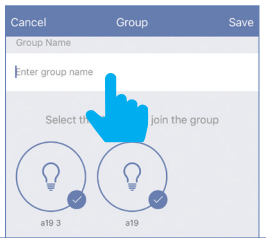
Tap **"White Light"** for soft white bulbs. Tap **"Color Lights"** for Color Changing/Tunable bulbs.

Note: You can only group like bulbs



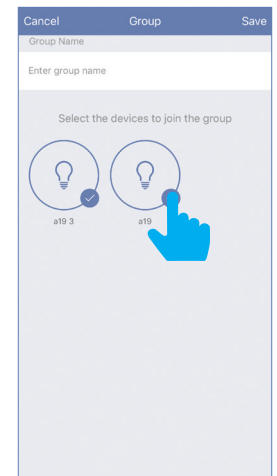
26

Tap the group name and enter the name of the group.



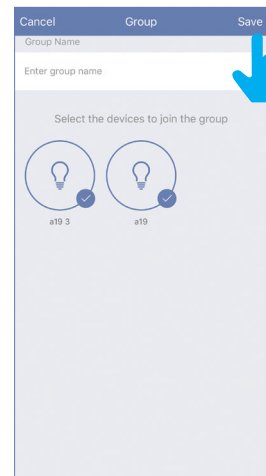
27

Then select the bulbs you want in the group.



28

Once the group is named and the bulbs are selected, tap **"Save"**.



Edit Groups



29

Tap the **“Group”** icon.



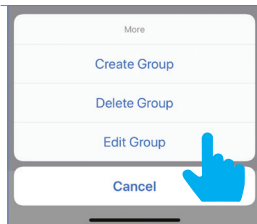
30

Tap the context menu in the upper right corner (•••).



31

Tap **“Edit Group”**.



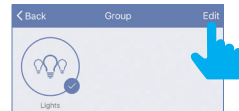
32

Select the group you would like to edit.



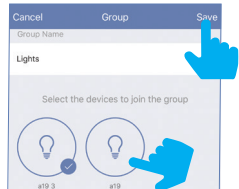
33

Once selected, tap **“Edit”** in the upper right hand corner.



34

Rename the group by tapping on the name or remove a bulb by tapping to deselect bulb(s). Tap **“Save”** once completed.



Delete Groups



35

Tap the **“Group”** icon.



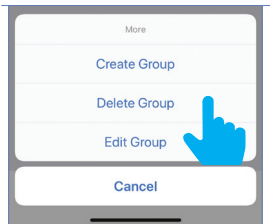
36

Tap the context menu in the upper right corner (•••).



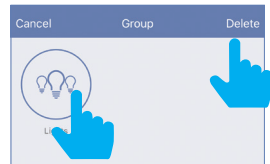
37

Tap **“Delete Group”**.



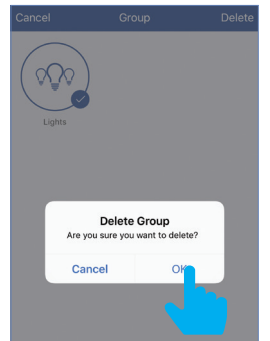
38

Select the group you would like to delete. Once selected, tap **“Delete”** in the upper right corner.



39

Tap **“OK”** to confirm.

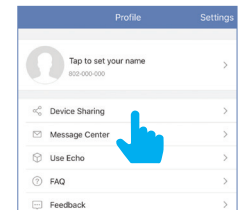


Device Sharing



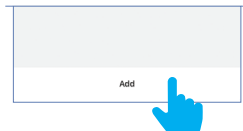
40

To share device(s) tap on the **“Profile”** icon and then tap on **“Device Sharing”**.



41

Tap **“Add”**.



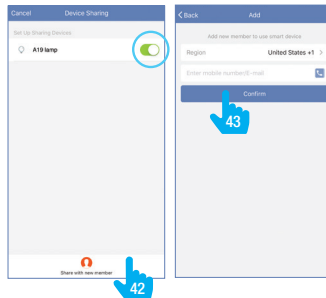
42

Select the device that you wish to share.
Tap **“Share with new member”**.

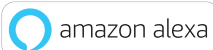
43

Enter the new member's
mobile number or email address
then tap **“Confirm”**.

Note: New members must set up an
account before sharing is possible.

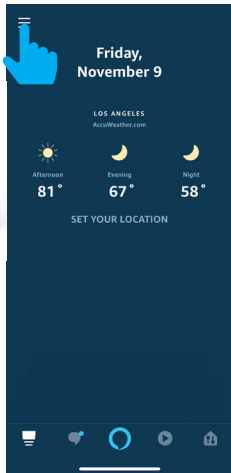


Connecting to Alexa



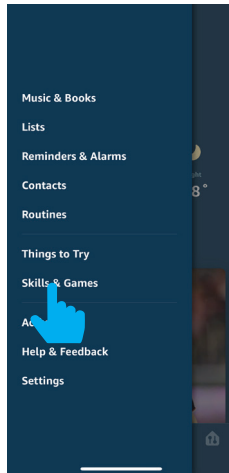
1

Launch the Alexa App then tap on the **"Menu"**.
(In the upper left corner)



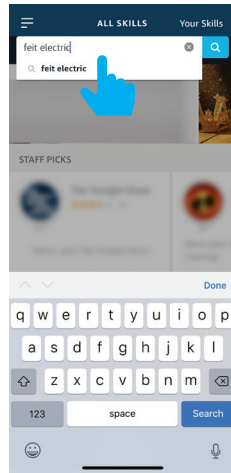
2

Tap **"Skills & Games"**.



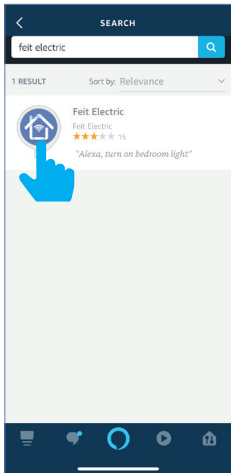
3

In the search menu type **"Feit Electric"**.



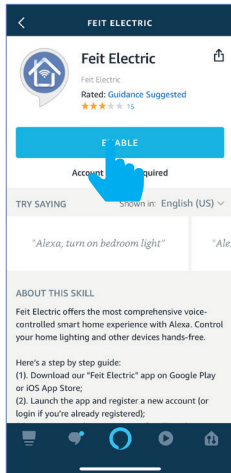
4

Tap **"Feit Electric"**.



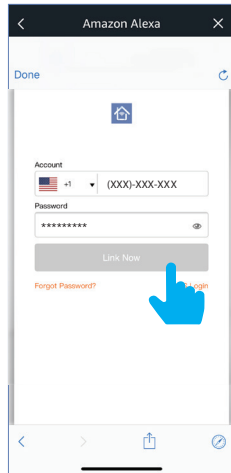
5

Tap **"Enable"**.



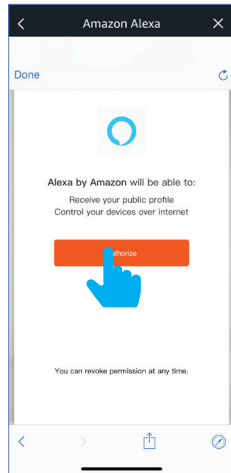
6

Enter the user & password from the Feit Electric App.
Then tap **"Link Now"**.



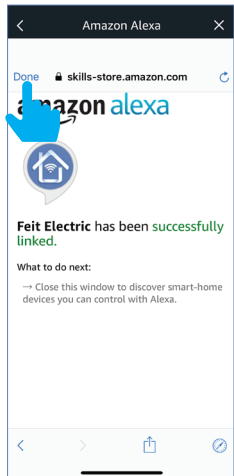
7

Tap **"Authorize"**.



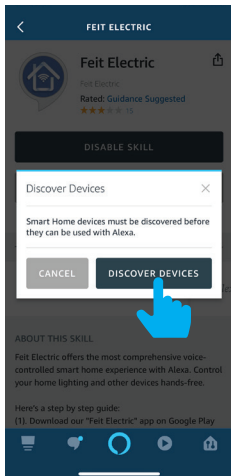
8

Tap **“Done”**
in the upper left corner.



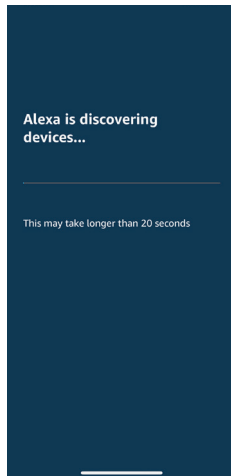
9

Tap **“Discover Devices”**.



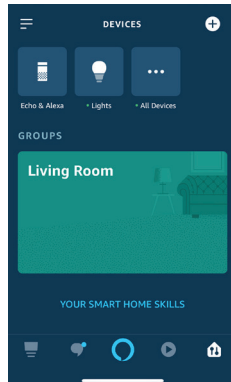
10

Alexa will now discover
and add device(s).



11

Once the device(s) are
discovered they will appear
under **“Devices”**
(lower right corner).



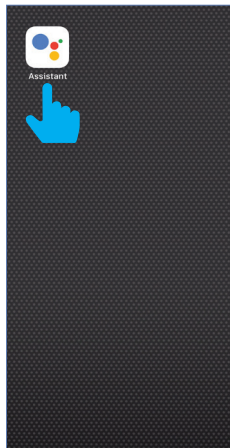
Note: Additional devices will
be added automatically when
added to the Feit Electric App.

Connecting to Google Home



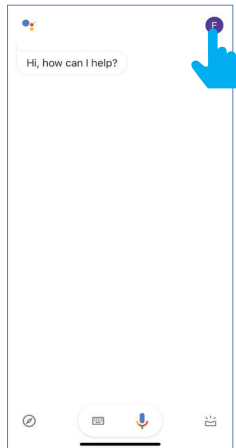
1

Open the
"Google Assistant" App.



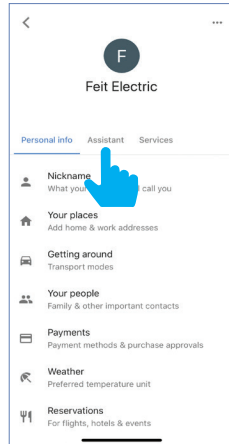
2

In the upper right corner tap
the "Circle" icon.



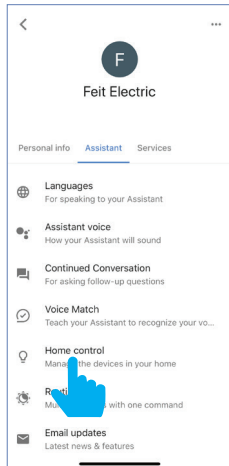
3

Tap "Assistant"



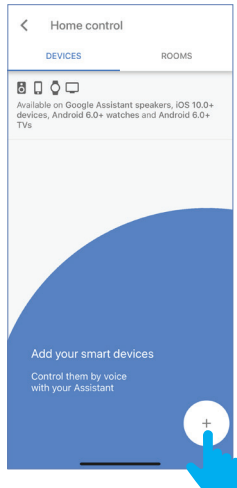
4

Tap **“Home Control”**



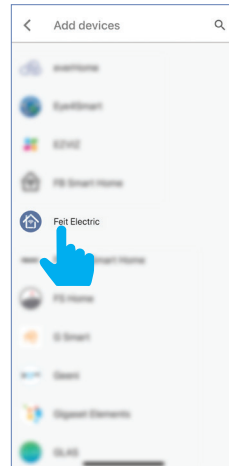
5

To add a device tap on the Circle **(+)** located in the lower right corner.



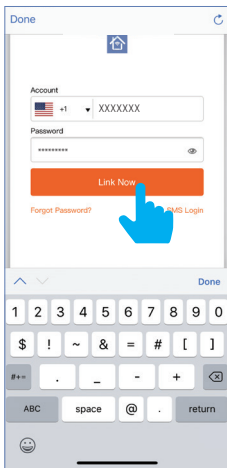
6

Scroll down and tap **“Feit”**.



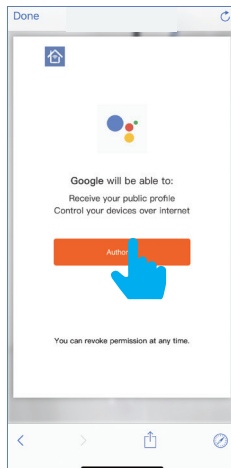
7

Enter the user & password from the Feit Electric App then tap **“Link Now”**.



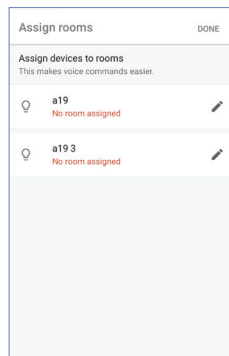
8

Tap **“Authorize”**.



9

Once device(s) are connected tap **“Done”** to return to Devices or tap the **“Pen”** icon to assign a room.



Note: Additional devices will be added automatically when added to the Feit Electric App.

Minimum System Requirements

iOS 9.3 and Android 4.1

Exigences minimales du système

iOS 9.3 et Android 4.1

May not be compatible with all devices.

If you are unable to download the app, the product is not compatible with your device.

Instruction manual may not reflect the latest version of the app. For the latest version, please visit www.feit.com/smartwifibulb.





For Technical Support

Please contact Feit Electric at

(562) 463-BULB (2852)

info@feit.com

or visit us at

www.feit.com

FCC Caution:

Any Changes or modifications not expressly approved by the party responsible for compliance could void the user's authority to operate the equipment.

This device complies with part 15 of the FCC Rules. Operation is subject to the following two conditions: (1) This device may not cause harmful interference, and (2) this device must accept any interference received, including interference that may cause undesired operation.

Note: This equipment has been tested and found to comply with the limits for a Class B digital device, pursuant to part 15 of the FCC Rules. These limits are designed to provide reasonable protection against harmful interference in a residential installation. This equipment generates, uses and can radiate radio frequency energy and, if not installed and used in accordance with the instructions, may cause harmful interference to radio communications. However, there is no guarantee that interference will not occur in a particular installation. If this equipment does cause harmful interference to radio or television reception, which can be determined by turning the equipment off and on, the user is encouraged to try to correct the interference by one or more of the following measures:

- Reorient or relocate the receiving antenna.
- Increase the separation between the equipment and receiver.
- Connect the equipment into an outlet on a circuit different from that to which the receiver is connected.
- Consult the dealer or an experienced radio/TV technician for help.

IMPORTANT NOTE:**FCC Radiation Exposure Statement:**

This transmitter must not be co-located or operating in conjunction with any other antenna or transmitter.

To maintain compliance with the FCC's RF exposure guidelines, place the equipment at least 20cm from nearby persons.