

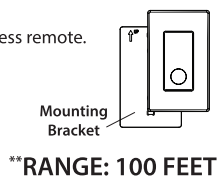
REMOTE INSTALLATION

WARNING: Use only in dry locations. Keep the wireless remote away from water, make sure your hands are dry before touching it.

SCREW INSTALLATION

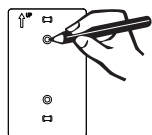
- Slide and lift the mounting bracket off the wireless remote.

****NOTE: Distance and obstructions may influence the signal strength. It is recommended to test the wireless remote first at the desired location before installation.**

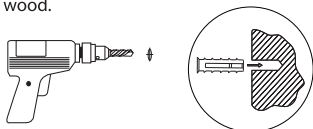


****RANGE: 100 FEET**

- Mark screw positions using the mounting bracket on your wall.

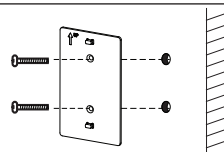


- Drill holes with a 15/64-inch (5.95mm) drill bit at the marked points if installing on drywall. Insert mounting anchors into holes. You can skip this step if installing on wood.

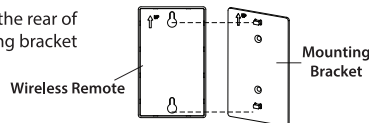


- Use the mounting screws to attach the mounting bracket to the wall.

NOTE: The arrow indicator should point up.



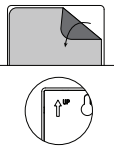
- Align the mounting holes in the rear of the remote onto the mounting bracket and slide it down.



DOUBLE-SIDED TAPE INSTALLATION

As an alternative, mount the mounting bracket using the provided double-sided tape. Clean the mounting area thoroughly (surface must be free of dust, dirt or grease).

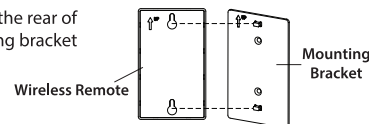
- Peel the double-sided tape and place the mounting bracket on a flat surface.



NOTE: The arrow indicator should point up.

NOTE: Install tape on smooth surfaces only. Use screws and anchors for extra support if mounted on rough surfaces.

- Align the mounting holes in the rear of the remote onto the mounting bracket and slide it down.



Need Help?

To reach customer support please visit feit.com/contact-us

WARNING:

This product may represent a possible shock or fire hazard if improperly installed or attached in any way. Product should be installed in accordance with the owner's manual, current electrical codes and/or the current National Electric Code (NEC).

RISK OF ELECTRIC SHOCK: TURN OFF THE MAIN POWER AT THE CIRCUIT BREAKER BEFORE INSTALLING.

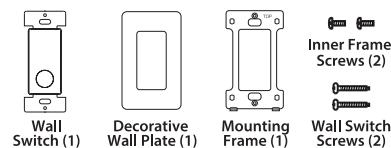
CAUTION: FOR CONTROL OF INCANDESCENT, CFL OR LED LUMINAIRES ONLY.

CAUTION: RISK OF FIRE:

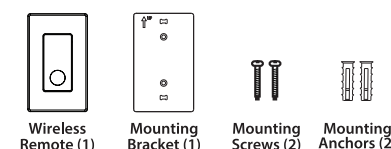
- DO NOT USE WITH CONTROL RECEPTACLE OUTLETS, FLUORESCENT LIGHTING FIXTURES, MOTOR-OPERATED APPLIANCES OR TRANSFORMER SUPPLIED APPLIANCES.
- DO NOT EXCEED ELECTRICAL RATINGS.
- USE ONLY COPPER WIRES WITH THIS DEVICE.
- USE INDOORS ONLY.
- INSTALL IN A METALLIC OUTLET BOX HAVING MIN. WIDTH 50 MM, OR A NON-METALLIC BOX.

ONLY USE WITH SOLID COPPER WIRE OR COPPER-CLAD WIRE.

PARTS INCLUDED WALL SWITCH



PARTS INCLUDED WIRELESS REMOTE



This device complies with Industry Canada licence-exempt RSS standard(s). Operation is subject to the following two conditions: (1) This device may not cause harmful interference, and (2) this device must accept any interference received, including interference that may cause undesired operation of the device. In addition, this device complies with ICES-003 of the Industry Canada (IC) Rules. Any Changes or modifications not expressly approved by the party responsible for compliance could void the user's authority to operate the equipment.

Note: This equipment has been tested and found to comply with the limits for a Class B digital device, pursuant to Industry Canada licence-exempt RSS standard(s). These limits are designed to provide reasonable protection against harmful interference in a residential installation. This equipment generates uses and can radiate radio frequency energy and, if not installed and used in accordance with the instructions, may cause harmful interference to radio communications. However, there is no guarantee that interference will not occur in a particular installation. If this equipment does cause harmful interference to radio or television reception, which can be determined by turning the equipment off and on, the user is encouraged to try to correct the interference by one or more of the following measures: -Reorient or relocate the receiving antenna.

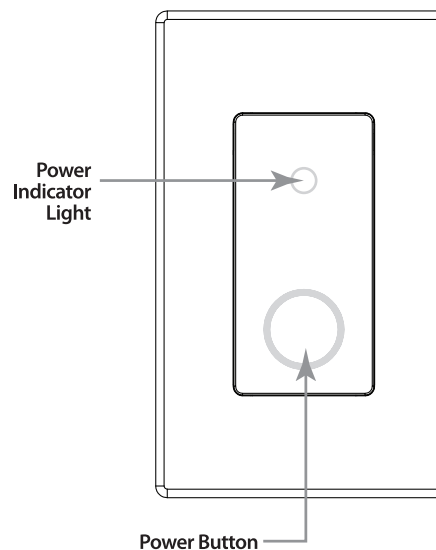
- Increase the separation between the equipment and receiver.
- Connect the equipment into an outlet on a circuit different from that to which the receiver is connected.
- Consult the dealer or an experienced radio/TV technician for help.

This equipment should be installed and operated with minimum distance 20cm between the radiator & your body.



ORDER NUMBER: SWITCH/REM

Wall Switch & Wireless Remote Installation Guide



Supplier's Declaration of Conformity:

47 CFR § 2.1077 Compliance Information

Responsible Party:

Feit Electric Company

4901 Gregg Road,

Pico Rivera, CA 90660, USA

562-463-2852

Unique Identifier:

SWITCH/REM, ITM. / ART. 2322009

120 Volt • 60Hz

600 Watt MAX Incandescent

300 Watt MAX CFL

300 Watt MAX LED



feit.com/help

This device complies with part 15 of the FCC Rules. Operation is subject to the following two conditions: (1) This device may not cause harmful interference, and (2) this device must accept any interference received, including interference that may cause undesired operation. Note: This equipment has been tested and found to comply with the limits for a Class B digital device, pursuant to part 15 of the FCC Rules. These limits are designed to provide reasonable protection against harmful interference in a residential installation. This equipment generates, uses and can radiate radio frequency energy and, if not installed and used in accordance with the instructions, may cause harmful interference to radio communications. However, there is no guarantee that interference will not occur in a particular installation. If this equipment does cause harmful interference to radio or television reception, which can be determined by turning the equipment off and on, the user is encouraged to try to correct the interference by one or more of the following measures: Reorient or relocate the receiving antenna. Increase the separation between the equipment and receiver. Connect the equipment into an outlet on a circuit different from that to which the receiver is connected. Consult the dealer or an experienced radio/TV technician for help. Any changes or modifications not expressly approved by the manufacturer could void the user's authority to operate the equipment. CAN ICES-005 (B).

FEIT ELECTRIC COMPANY Pico Rivera CA, USA

www.feit.com

IMPORTANT, RETAIN FOR FUTURE REFERENCE: READ CAREFULLY

INSTALLING THE WALL SWITCH

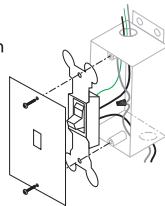
NOTE: FOR ALL THE STEPS BELOW. IF YOU ARE NOT CERTAIN YOU HAVE THE WIRING DESCRIBED, CONSULT A QUALIFIED ELECTRICIAN FOR ASSISTANCE.

- 1 WARNING: TO REDUCE THE RISK OF FIRE OR SHOCK HAZARD, TURN OFF POWER AT CIRCUIT BREAKER OR FUSE AND TEST THAT POWER IS OFF BEFORE WIRING.**

2 IDENTIFY YOUR WIRING

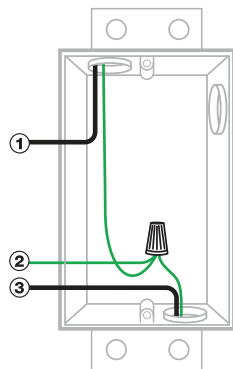
- 2a.** Open the outlet box. Carefully pull-out switch from wall. **DO NOT** remove wires attached.

IF YOU'RE NOT SURE, CONSULT A QUALIFIED ELECTRICIAN.



- 2b.** Determine your wires and label them. Review the diagram below to find the closest match.

NOTE: Installation requires LINE, LOAD, and GROUND wires. The NEUTRAL wire (WHITE) is not used for this installation. Please leave it as is if the NEUTRAL wire is present.



1. LINE (HOT)
2. GROUND
3. LOAD

2c. LABEL YOUR WIRES

1. Label the incoming 120V LINE (HOT) wire (usually black) with the label HOT.
2. Label the green wire or bare wire GROUND with the label GROUND.
3. Label the other wire LOAD with the label LOAD.

NOTE: If there are NEUTRAL wires (WHITE) present in your electrical box, please leave them as is.

2d. DISCONNECT WIRES AND REMOVE THE OLD SWITCH

PREPARING AND CONNECTING WIRES

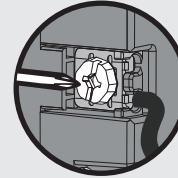
Use with #12 or #14 AWG solid copper wire or copper-clad wire.

Strip wires to 0.80 inch.

Do not use stranded wire.



Insert wires into terminal holes and secure connections by tightening terminal screws as shown.

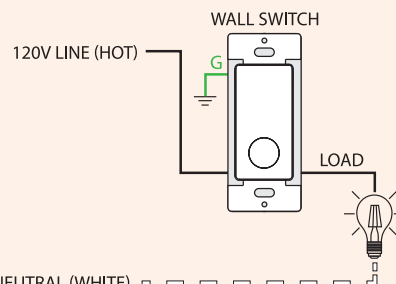
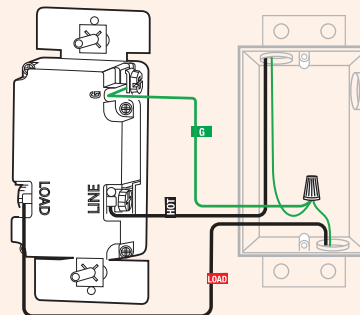


NOTE: FOR ALL THE STEPS BELOW. IF YOU ARE NOT CERTAIN YOU HAVE THE WIRING DESCRIBED, CONSULT A QUALIFIED ELECTRICIAN FOR ASSISTANCE.

3 One Wall Switch on a Circuit

MAKE THE WIRE CONNECTIONS

1. Insert the black wire labeled HOT into the BRASS screw terminal in the back of the Wall Switch marked LINE and tighten it until the wire is tightly held.
2. Insert the GROUND wire labeled GROUND into the GREEN screw terminal in the back of the Wall Switch and tighten it until the wire is tightly held.
3. Insert the other wire labeled LOAD into the remaining BRASS screw terminal in the back of the Wall Switch and tighten it until the wire is tightly held.



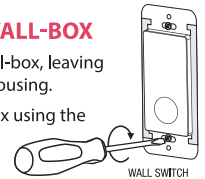
*NEUTRAL (WHITE) - - - - -

***NOTE: Existing NEUTRAL wire (WHITE), please leave it as is.**

NOTE: The Wall Switch does NOT require a NEUTRAL wire (WHITE). Never connect the NEUTRAL wire to the Wall Switch.

4 FIT WALL SWITCH INSIDE THE WALL-BOX

- Carefully position all wires inside the wall-box, leaving enough room to insert the wall switch housing.
- Secure the wall switch inside the wall-box using the provided wall switch screws.



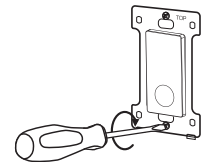
5 SEPARATE MOUNTING FRAME FROM WALL PLATE

- Gently insert screwdriver into slots to separate mounting frame from decorative wall plate.



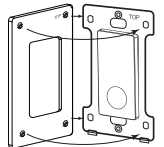
6 INSTALL MOUNTING FRAME

- Place the mounting frame over your installed wall switch and secure it using provided frame screws.



7 INSTALL WALL PLATE

- Snap the decorative wall plate over the installed mounting frame with the top first then the bottom.



DECORATIVE WALL PLATE SNAPS ONTO MOUNTING FRAME

8 WALL SWITCH OPERATION

- Connect a lamp to the load. Restore power to enable wall switch operation.

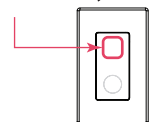
9 HOW TO PAIR WALL SWITCH TO WIRELESS REMOTE

The wireless remote comes pre-paired to your wall switch. If the wireless remote is not paired with the Wall Switch please follow the instructions below.

- **Pairing Mode** – Press and hold the power button on the wall switch for 5 seconds. The power indicator light blinks slowly for 30 seconds. Press and release the power button once on the wireless remote to pair.
- **Factory Reset** – Press and hold the power button on the wall switch for 10 seconds. The power indicator light blinks rapidly for 2 seconds. All paired wireless remotes will automatically reset within 2 seconds.

- **Power Indicator Light** – On when the wall switch is On only with a lamp(s) connected to the load.

NOTE: While one wall switch can control up to 10 wireless remotes, a wireless remote can control more than 10 wall switches.



SAVE THESE INSTRUCTIONS