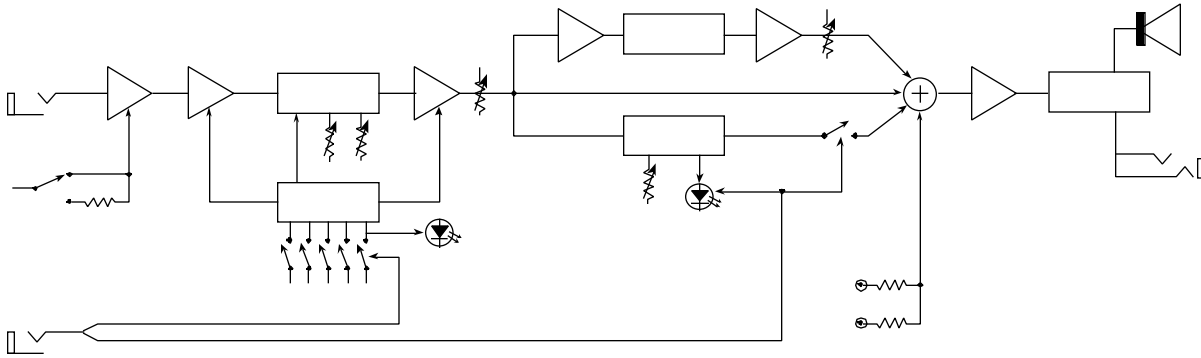


# BLOCK DIAGRAM

---



A PRODUCT OF:  
**FENDER MUSICAL INSTRUMENTS CORP.**  
CORONA, CA 91720 USA

# AUTOMATIC SERIES

**Reference and  
Owner's Manual**

3/A 05'5'5  
07/4



tone • tradition • innovation



Fender Musical Instruments  
7975 North Hayden Road, Scottsdale, Arizona 85258 U.S.A.

Since 1946, Fender realized the importance of your amplifier. You see, your amplifier is more than just a combination of dials, wires and speakers. **It is a finely tuned musical instrument.** And like any fine musical instrument, it should be treated with special care and attention to detail.

At Fender, we know what building guitar amplifiers is all about. For over half a century, we have been designing and producing some of the world's best amplifiers, helping shape the face of music. In fact, many of the world's most classic and best sounding amplifiers have proudly worn the Fender name.

Whether you're after that classic Fender tone, a clean crisp sound for your Bass or Keyboard or the raw driving power of modern distortion, your decision to purchase a Fender amplifier is one you will appreciate with each passing note for years to come.



Wishing you years of enjoyment and a heartfelt thank you,

A handwritten signature in black ink that reads "Bill Schultz". The signature is written in a cursive, flowing style.

Bill Schultz  
Chairman  
Fender Musical Instruments Corporation

# SPECIFICATIONS

---

TYPE:	PR 329	 
PART NUMBER:	<b>MODEL GT</b> 22-6300 (120V) 22-6330 (240V) Aust 22-6340 (230V)UK 22-6360 (230V) Eur 22-6370 (100V)	<b>MODEL SE</b> 22-6400 (120V) 22-6430 (240V) Aust 22-6440 (230V) UK 22-6460 (230V) Eur 22-6470 (100V)
POWER REQUIREMENTS:	100V AC, 50/60 Hz 90W 120V AC, 60 Hz, 90W 230V AC, 50 Hz, 90W 240V AC, 50 Hz, 90W	
POWER OUTPUT:	25W into 8 $\Omega$ at 5% THD	
INPUT IMPEDANCE :	Instrument: >500 k Tape/CD: 12 k	
NOMINAL INPUT LEVEL:	Instrument: 100 mV	
INPUT SENSITIVITY:	Tape/CD: 120 mV for clipping	
SPEAKER:	One Fender Special Design 12" speaker (P/N 025923)	
FOOTSWITCH: (Optional)	2 Button Footswitch, Controls Gain Select and Chorus (P/N 029972)	
DIMENSIONS:	Height: 17.5 in 44 cm Width: 17 in 43 cm Depth: 9.5 in 24 cm	
WEIGHT:	28 lbs 12.7 kg	

Fender®, Tone-Master® and Princeton® Chorus are registered trademarks of FMIC.

Product specifications are subject to change without notice.

## TROUBLESHOOTING

---



If the amp is set up but does not function, check the following items:

- Is the power cord properly plugged into an electrical outlet?
- Is there power at the outlet?
- Are all the control knobs turned above 0?
- Is the volume control on the instrument turned up?
- Is the instrument properly plugged into the amplifier?

(Eliminate any effects pedals and try using another cord.)

If after checking all of the above your amplifier is still not performing correctly, consult your authorized Fender Service Center.

## COVERING CARE

---



The exclusive covering on your Fender Automatic cabinet has been especially designed for years of lasting beauty. A very light soapy solution on a sponge may be used to remove dirt and residue that may accumulate in the fabric. Be careful not to let any liquid come in contact with operating surfaces. **REMEMBER TO UNPLUG THE POWER CORD BEFORE CLEANING AND WAIT UNTIL THE UNIT IS COMPLETELY DRY BEFORE PLUGGING IT IN.**

# YOUR AUTOMATIC AMPLIFIER

---

**Tape/CD Inputs - Play back accompaniment or learning tapes through your amp**



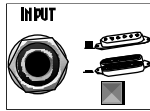
**Footswitch Jack - On-Off Switching of the Chorus and Lead/Overdrive Channel**



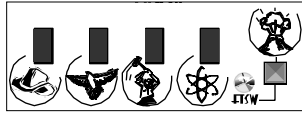
**Headphone Jack - For Private Listening**



**Sensitivity Switch - Automatically adjusts your amp's sensitivity for Single Coil or Humbucking Pickups**



**5 Preset Sounds - Created by the Fender Tone-Team, from Clean to Overdrive**



Congratulations on your purchase of a Fender Automatic series amplifier. Your new Fender amp is designed by the same Tone-Team that has created many other classic Fender amps: like the Tone-Master®, Princeton® Chorus and the versatile Hot Rod Series. Built with care and special attention to detail, your Automatic offers much more than meets the eye.

Automatic Series Amplifiers include among their many features: 25 Watts of power; Classic Fender Reverb and 5 preset tone / gain buttons for everything from Fender clean to ultimate overdrive. Both the Automatic GT, voiced for rock and metal and the Automatic SE, voiced for blues and country, feature convenient front panel mounted controls and input jacks. The footswitch circuitry allows for remote selection of both the 5th preset (a lead or solo sound) and Chorus. Moreover, the Tape/CD input jacks and the 1/4 inch headphone jack make your Automatic the perfect amp for practice or small "single" gigs.

Designed for the guitarist who wants a no nonsense approach to tone shaping and gain restructuring, your Automatic is a high quality Fender amplifier at an affordable price. To ensure maximum performance from your Automatic, please read through this manual thoroughly. Also, please heed all safety warnings relating to your new Automatic.

Take the time to get to know each other... Tune-up, Plug-in and ... Play On!

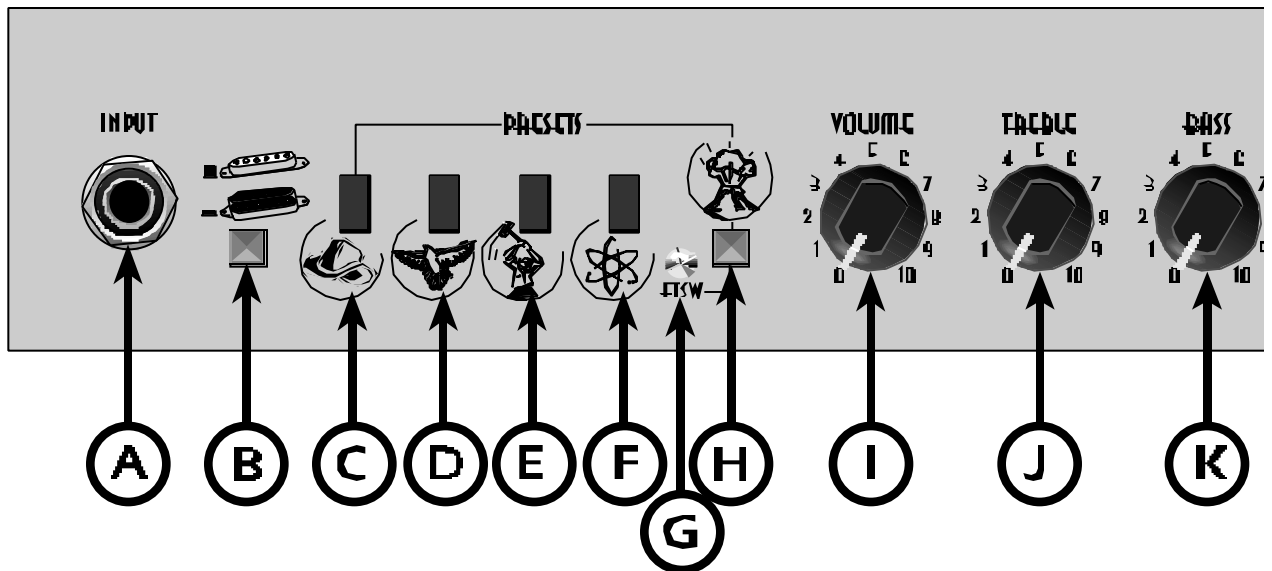
## WARNING:

**-TO PREVENT DAMAGE, FIRE OR SHOCK HAZARD, DO NOT EXPOSE THIS UNIT TO RAIN OR MOISTURE.**

**-NO USER SERVICEABLE PARTS INSIDE, REFER SERVICING TO QUALIFIED PERSONNEL ONLY.**

**-THIS UNIT MUST BE EARTH GROUNDED.**

# AUTOMATIC FRONT CONTROL PANEL



**A. INPUT** - Plug your guitar in here.

**B.** - Sensitivity/ gain switch for the input signal. When this button is in, it provides a 7dB cut useful for reducing distortion in the clean settings when using guitars with active electronics or humbucking pickups. The normal 'out' position is set for single coil pickups.

**C.** - This button activates the classic FENDER-CLEAN preset on your Automatic GT/SE amplifier.

**D.** - This button activates the STUDIO-CLEAN preset. When pressed, it adds a mild boost in the upper mid to high frequency range and provides slightly more overall gain than the Fender-Clean preset.

**E.** Automatic GT Automatic SE - This button activates the RHYTHM/CRUNCH preset. It rearranges the gain/tone structure to produce a semi-distorted tone useful for playing rhythm or bluesy leads. This preset has slightly more overall loudness than the clean presets.

**F.** Automatic GT Automatic SE - This button activates the RHYTHM/DRIVE preset. It further modifies the structure to provide more gain, loudness and a different tonal response than the rhythm/crunch preset.

Note: To create even more tonal possibilities, you can combine the various presets by simply pressing two or more preset buttons (items C through F) simultaneously.

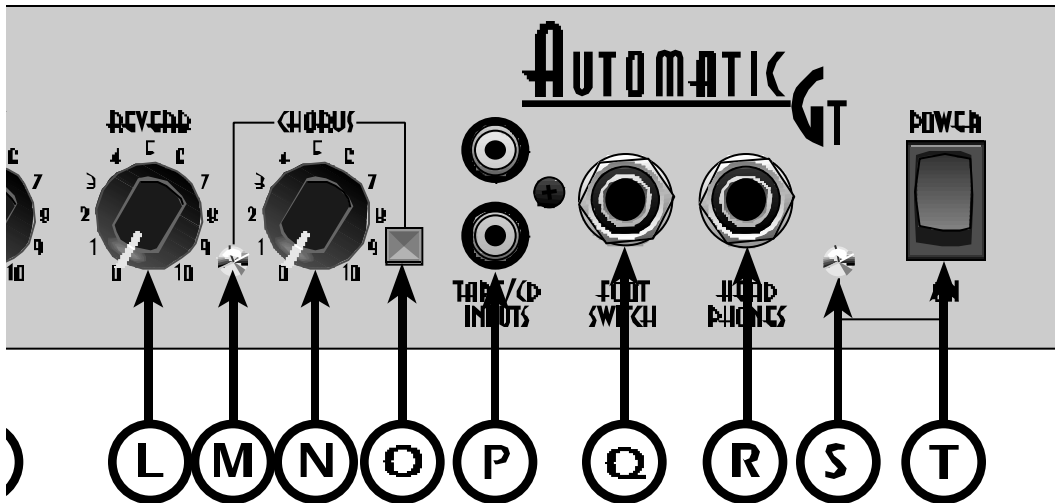
**G. FTSW** - This LED illuminates when the LEAD/OVERDRIVE preset is activated, either by pressing the corresponding preset button (item H), or by using the CHANNEL SELECT function on the optional two-button footswitch (see item Q).

**H.** Automatic GT Automatic SE - This switch activates the LEAD/OVERDRIVE preset, which is useful for playing full-on leads and heavy power chords with lots of sustain. It has significantly more drive and sustain than any of the other presets. When this button is in, the previously selected clean or rhythm preset is disabled. This lead/overdrive sound can also be activated by the optional footswitch (see item Q).

**I. VOLUME** - Adjusts the overall loudness of the amplifier.

**J. TREBLE** - Adjusts the amount of boost or cut in the high frequency range for all presets.

**K. BASS** - Adjusts the amount of boost or cut in the low frequency range for all presets.



**L. REVERB** - Adjusts the amount of reverberation for all presets.

**M. CHORUS INDICATOR** - This LED illuminates when the chorus circuit is active. The LED brightness varies indicating the chorus sweep rate.

**N. CHORUS** - This control automatically adjusts both the depth and sweep rate of the chorus circuitry. A lower setting produces a slow, full-range sweep whereas a higher setting produces a fast and less wide sweep.

**O. CHORUS SWITCH** - Activates the chorus circuitry for all presets. Chorus can also be activated by the optional footswitch (see item Q).

**P. TAPE/CD INPUTS** - Plug-in connection for any line level stereo or mono signal to be mixed together with the instrument signal. These inputs have fixed gain and are unaffected by any of the front panel controls. They can be used to connect a tape or CD player, or other signal source (rhythm machine, synth...) to be used as accompaniment for practice or performance. The output level control of the external signal source is used to control its volume while the front panel VOLUME control is used for the instrument to obtain a balance.

**Q. FOOTSWITCH** - Plug-in connection for the optional remote footswitch (P/N 029972) to select the lead/overdrive preset, and to switch the chorus on and off. For proper footswitch operation, both the LEAD/OVERDRIVE switch (item H) and the CHORUS switch (item O) must be in the 'out' position. NOTE: Any good quality patch cord will work with the remote footswitch, however an unshielded speaker type cord is preferable to a coax guitar cord.

**R. HEADPHONES** - This jack provides an output to standard mono or stereo headphones for private listening. It can also be used as an unbalanced line output. Use of this jack automatically disables the speaker. **CAUTION: Prolonged listening at high levels may be hazardous to your hearing!**

**S. POWER INDICATOR** - This LED illuminates when your Automatic is receiving power.

**T. POWER SWITCH** - Turns the AC power ON and OFF. When the switch is OFF, the amplifier is completely shut down.

**LINE CORD** - This amplifier is equipped with a grounding type supply cord to reduce the possibility of shock hazard. Be sure to connect it to a grounded AC receptacle. The line cord should be connected to a suitable power source in accordance with voltage and frequency as shown in the power rating on the rear panel. **DO NOT ALTER THE THREE PRONG PLUG.**