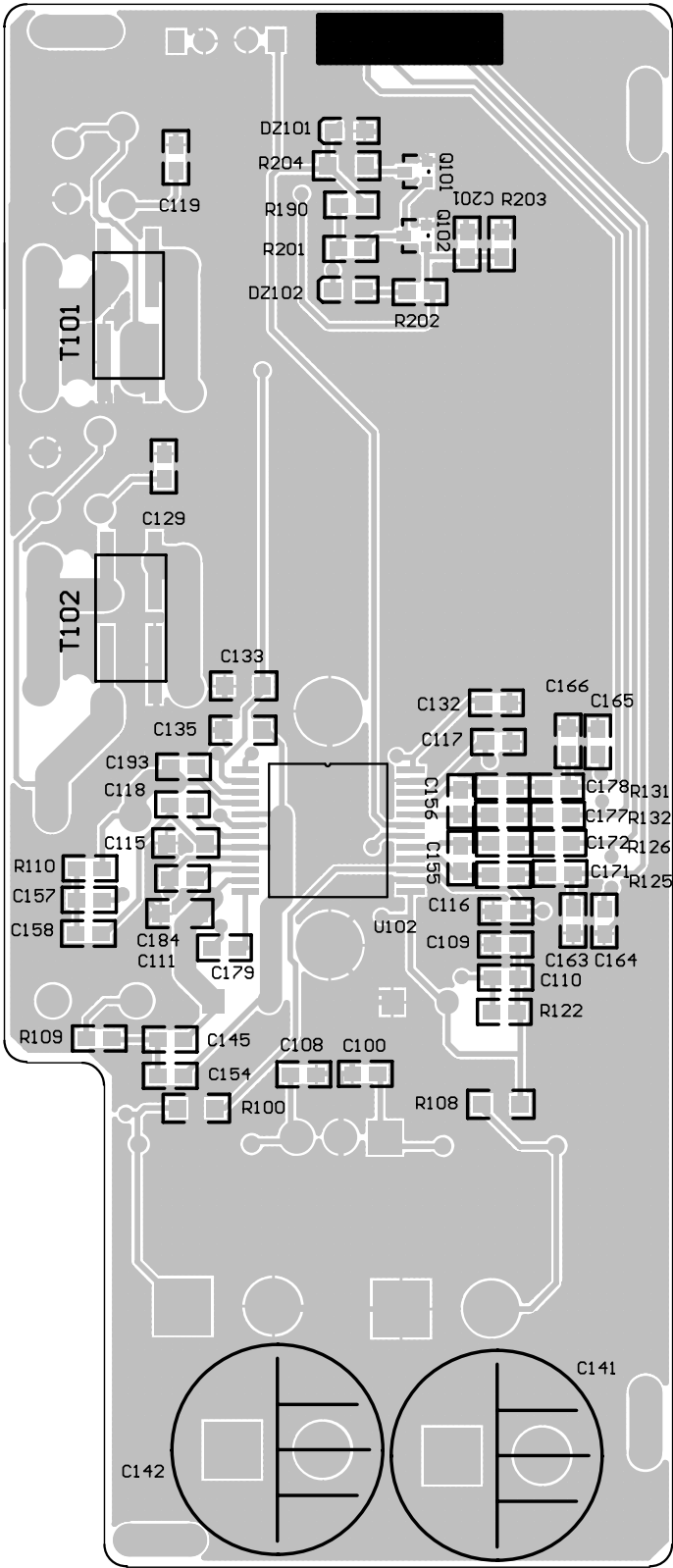


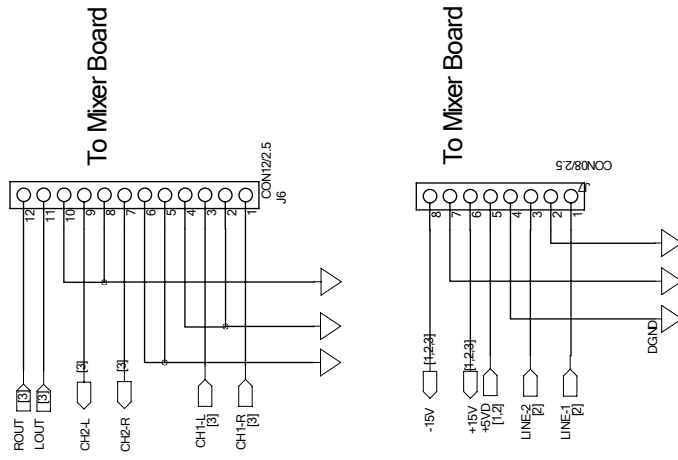
AMP PCB - top side



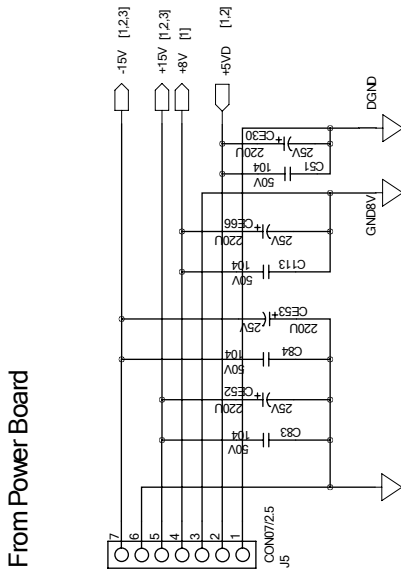
AMP PCB - bottom side



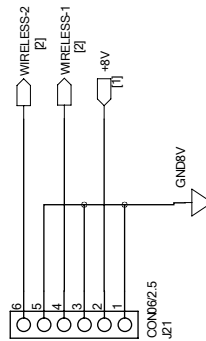
Output Connectors



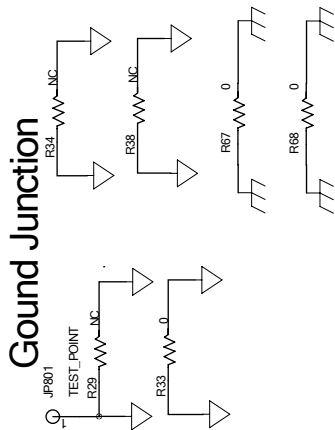
Input Connectors



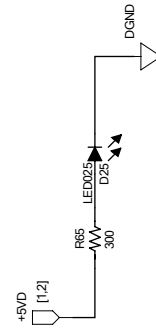
From Wireless Board

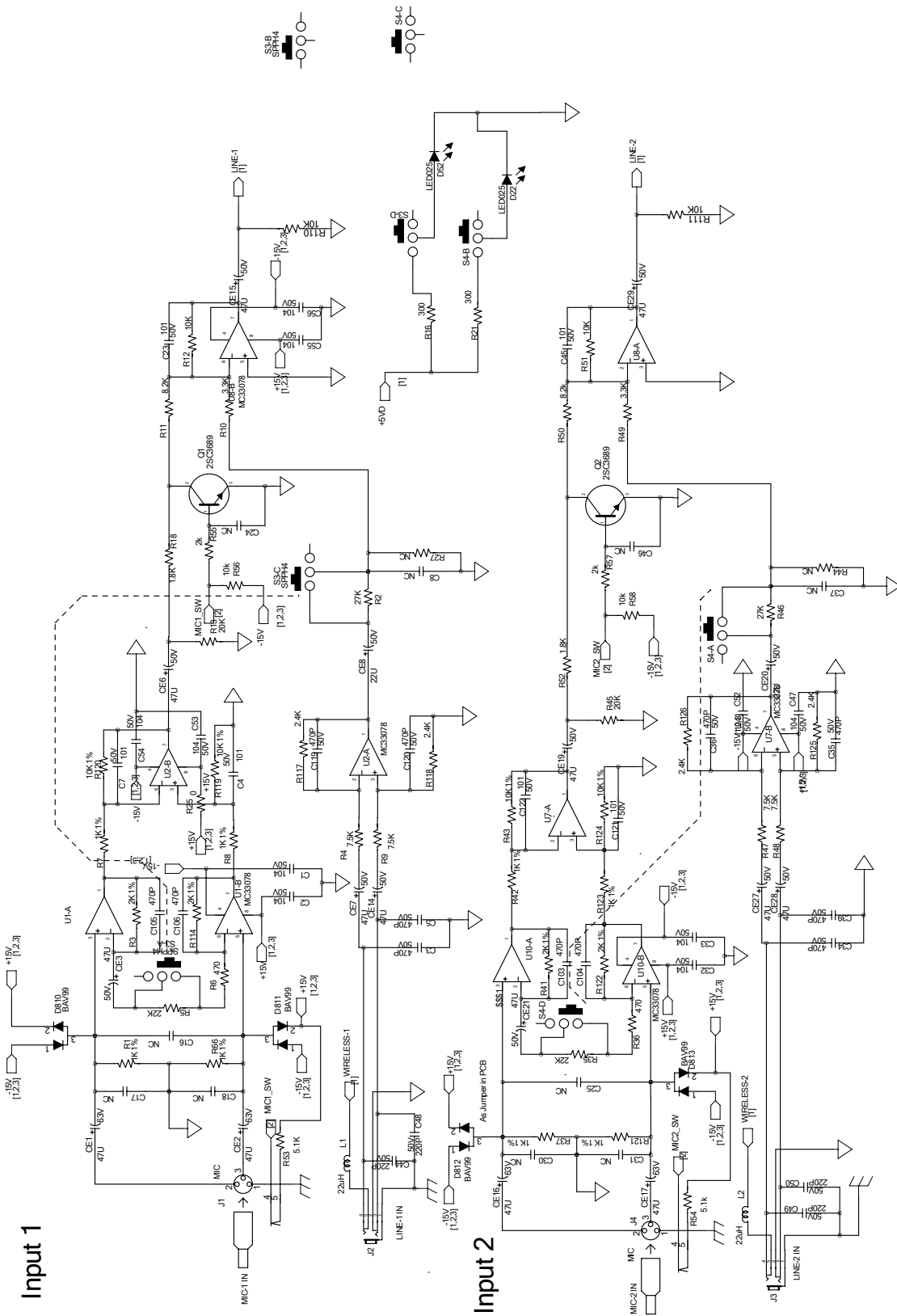


Ground Junction



Power Indicator





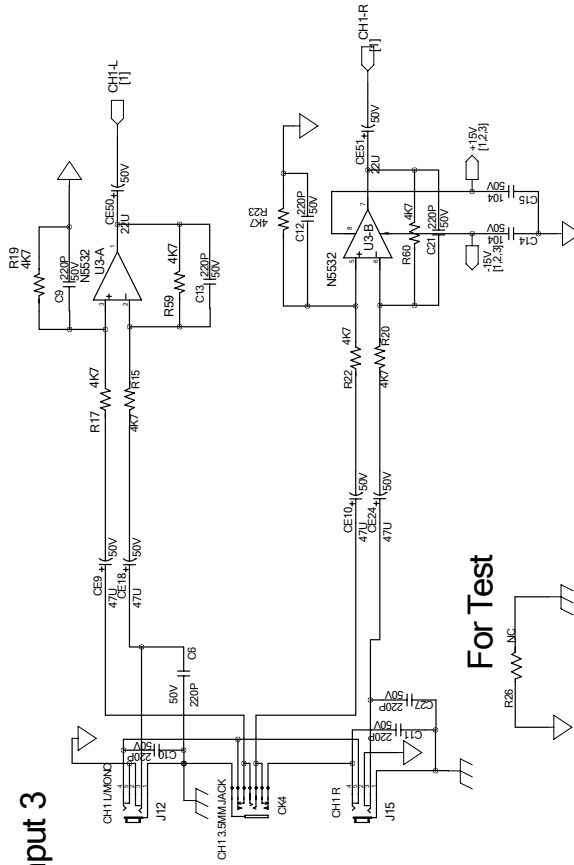
Input 1

Input 2

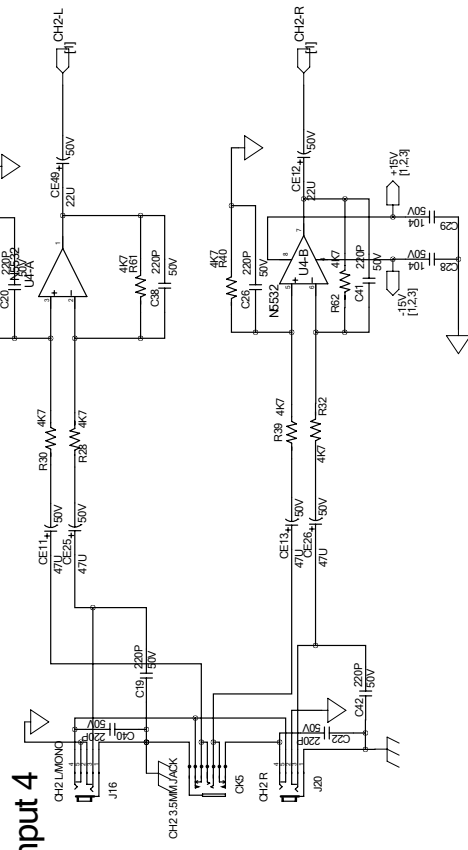


Input Schematic Diagram – 2/3

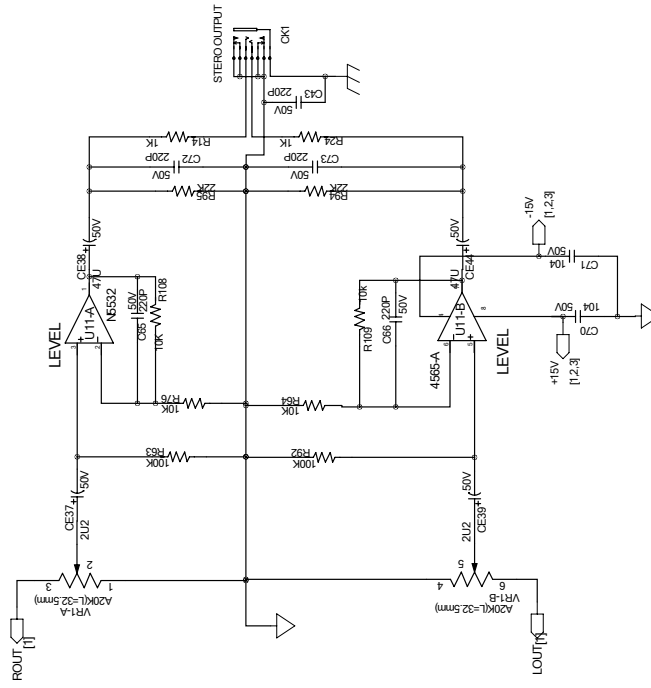
Input 3

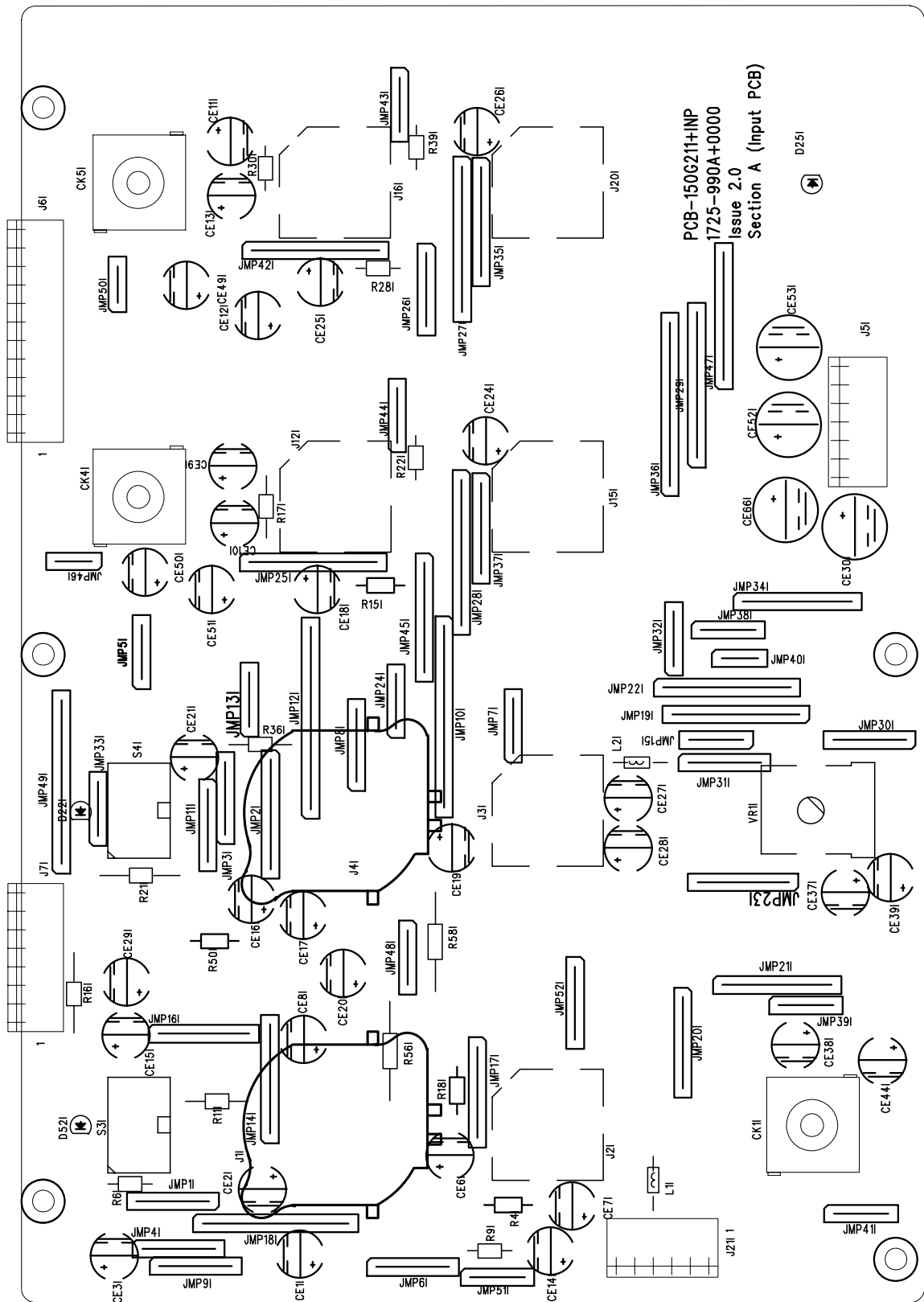


Input 4



Stereo Out

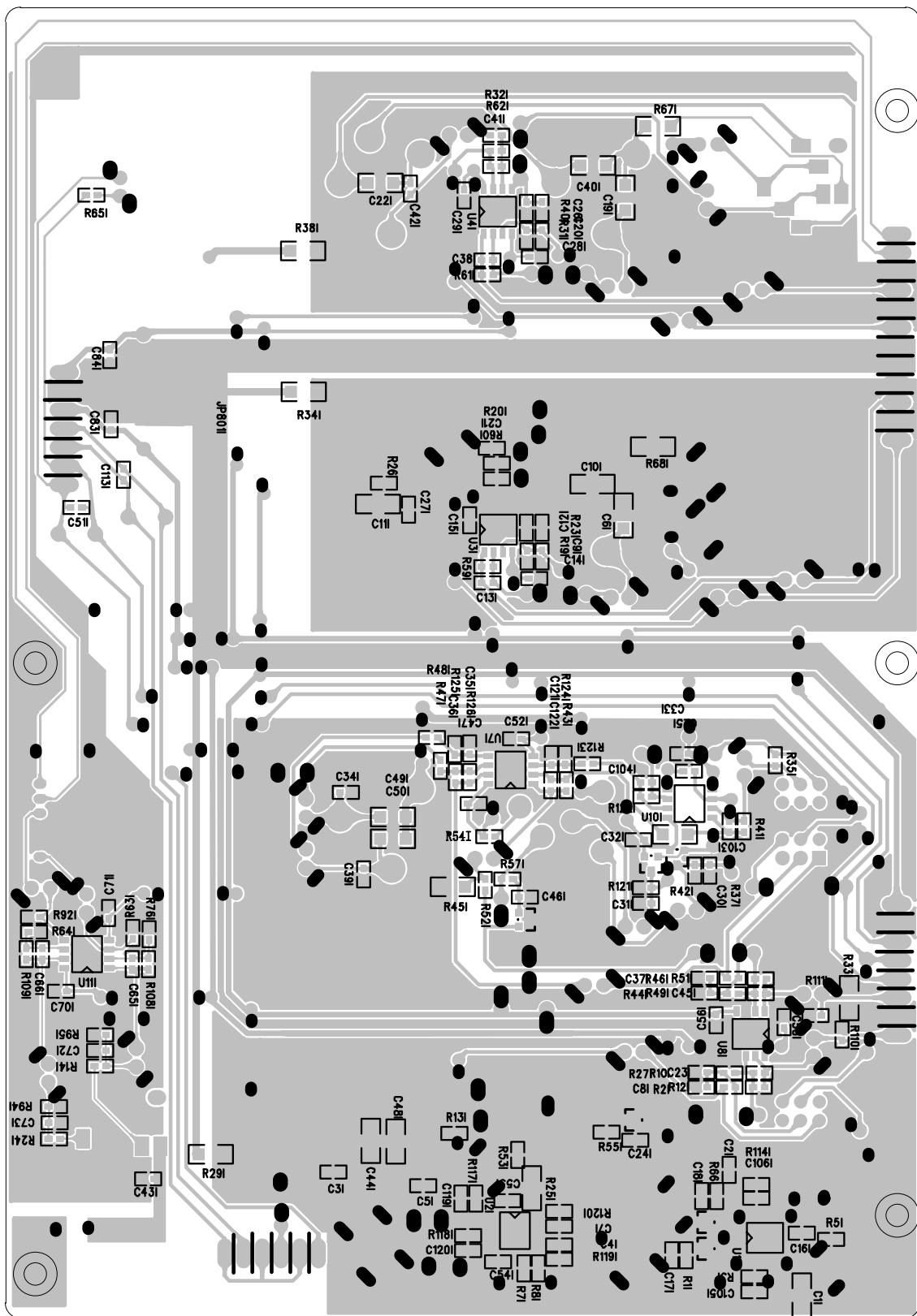




Input PCB top side



Input PCB



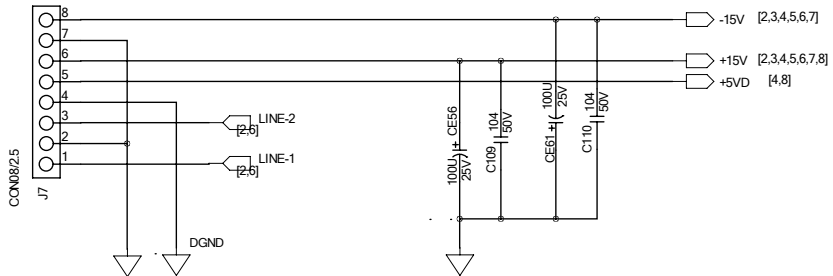
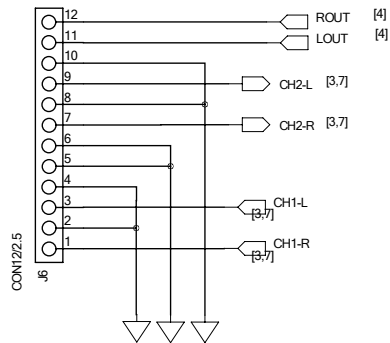
Input PCB bottom side



Input PCB

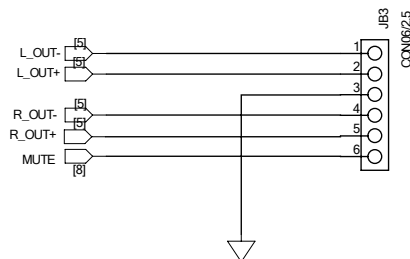
Input Connectors

From Input Board

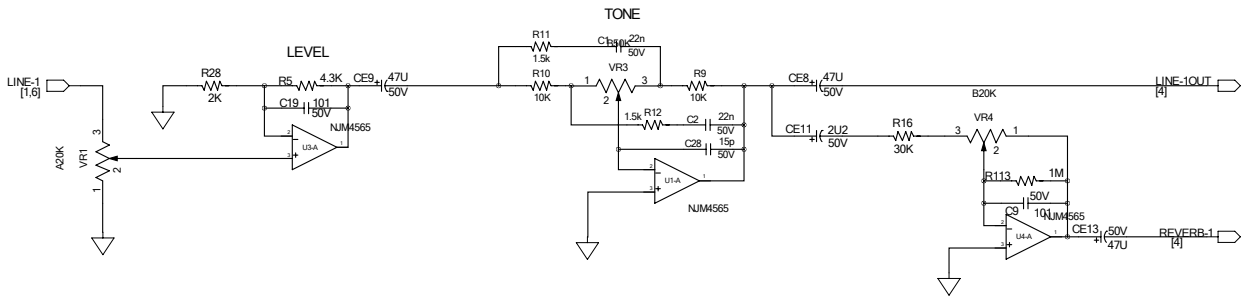


Output Connectors

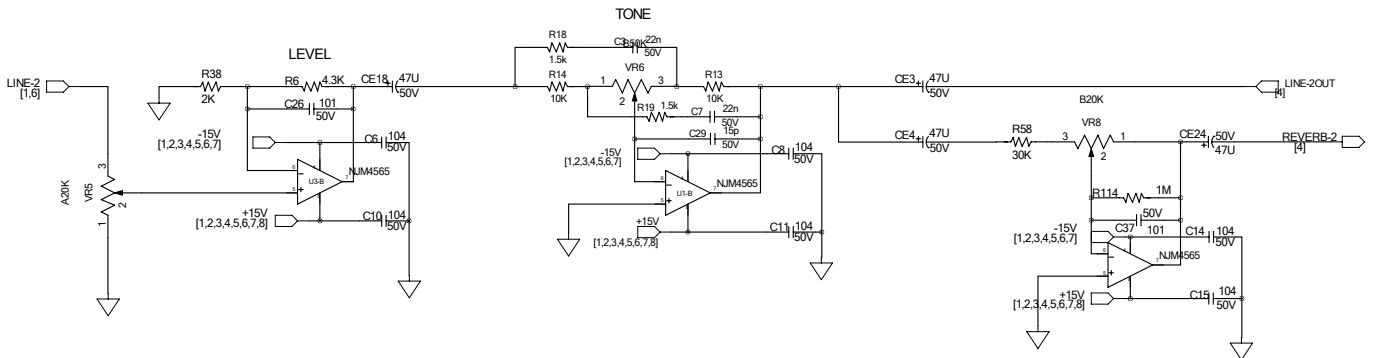
To Class D AMP Board



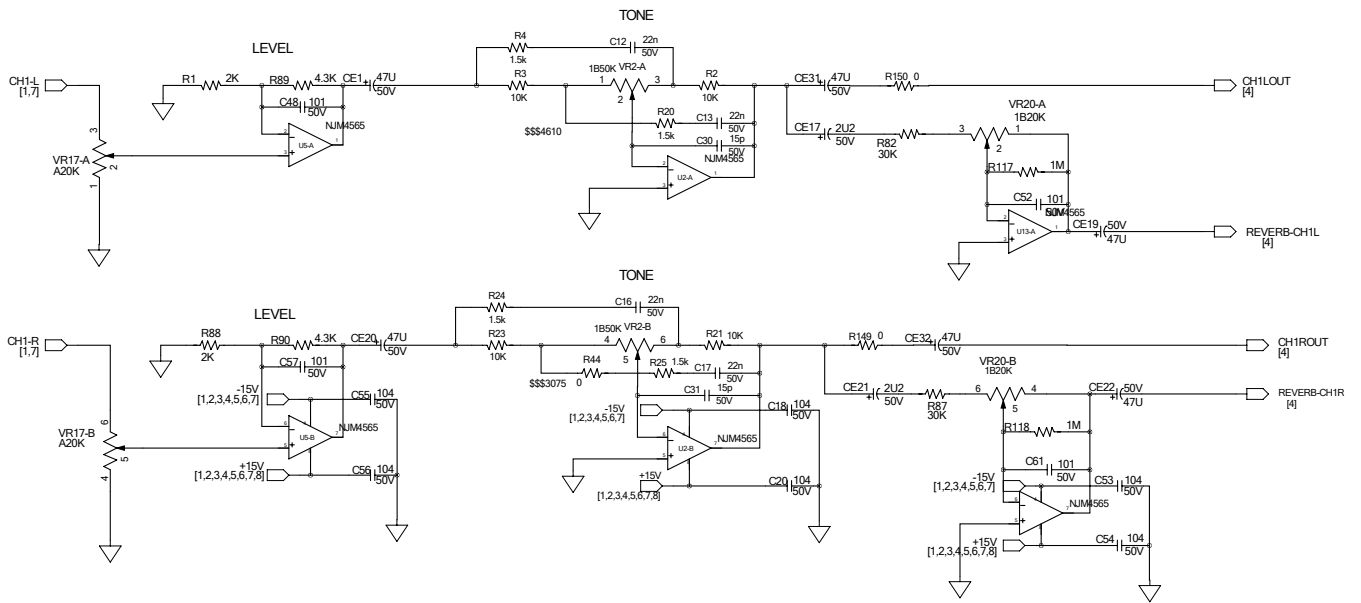
Input 1



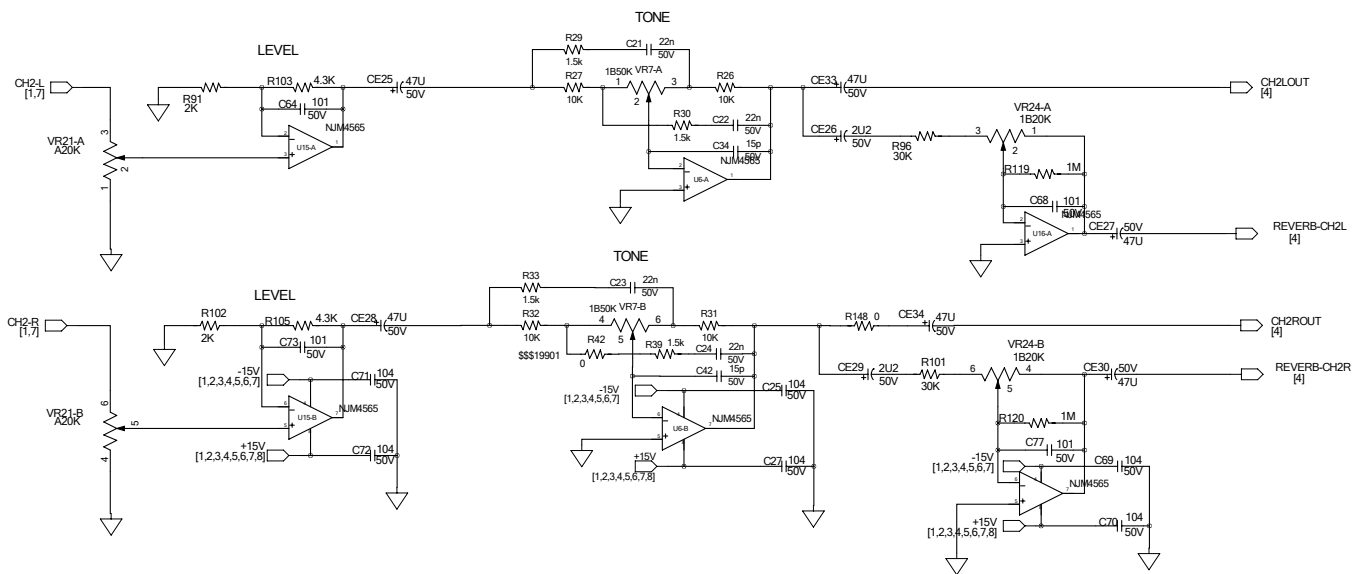
Input 2



Input 3

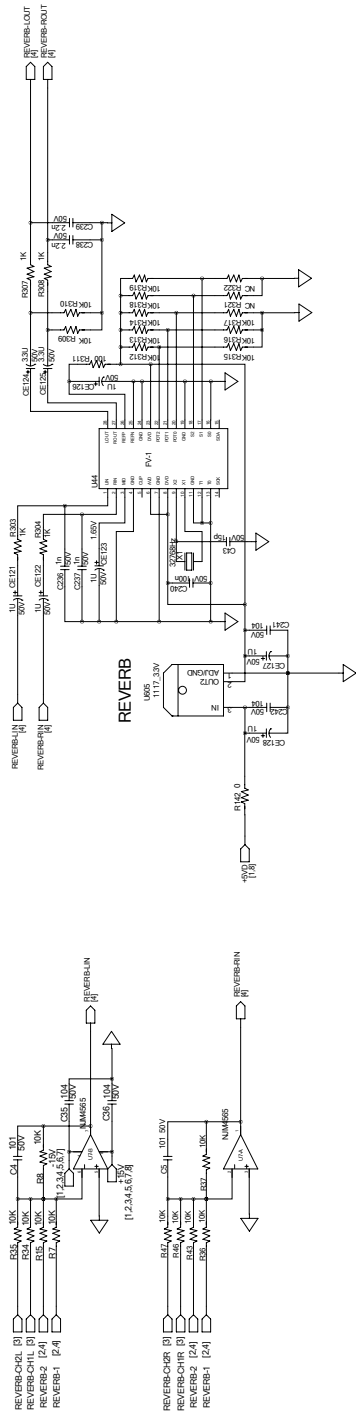


Input 4

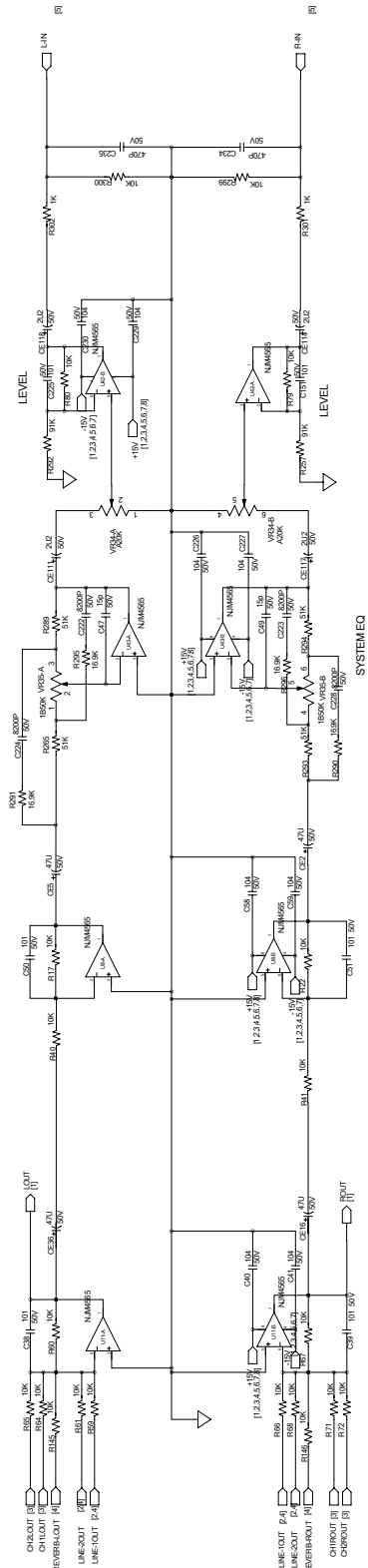


Mixer Schematic Diagram 3/8

Mix Signal for Reverb



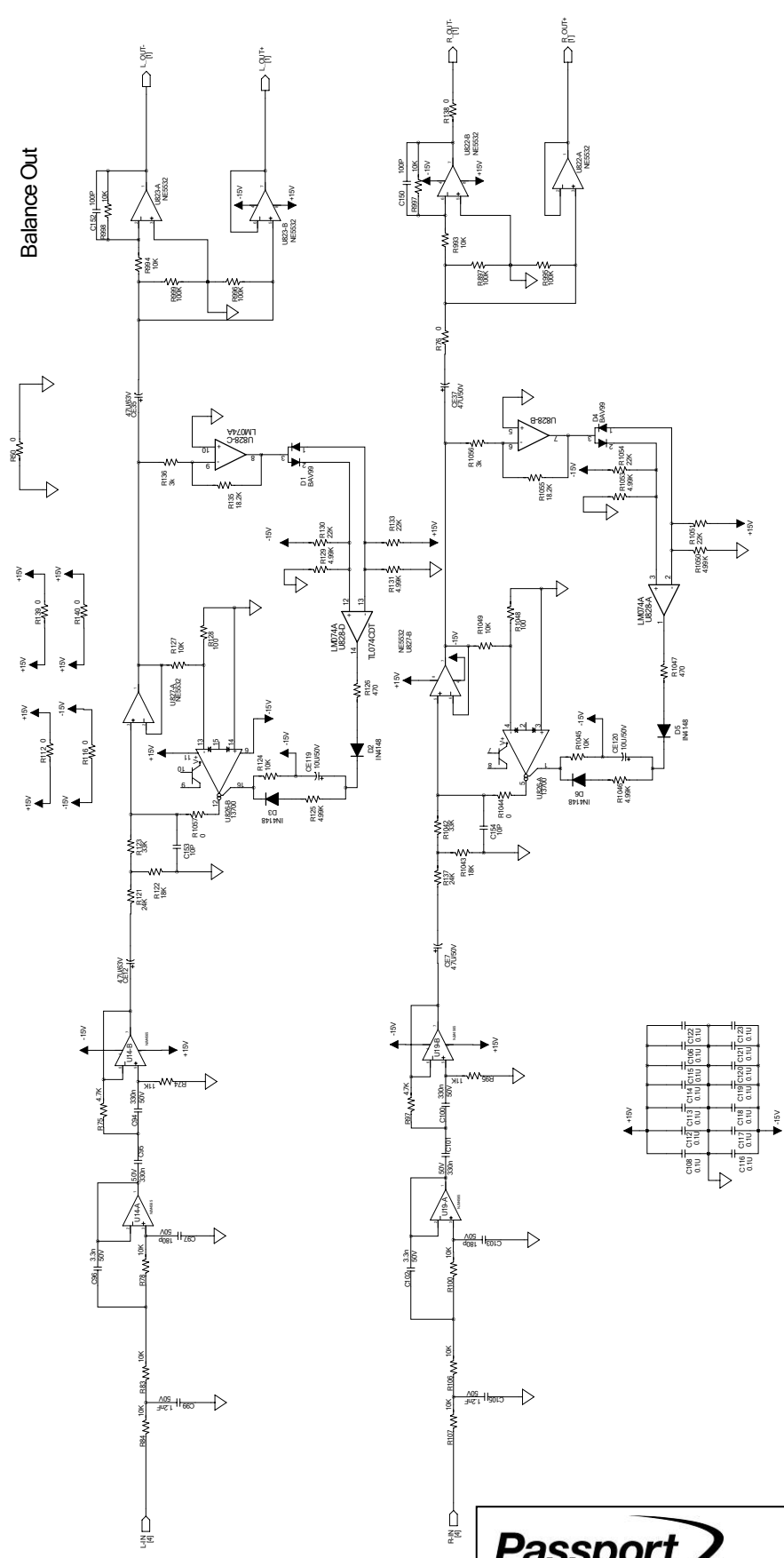
Mix Signal for Master Out(L & R)



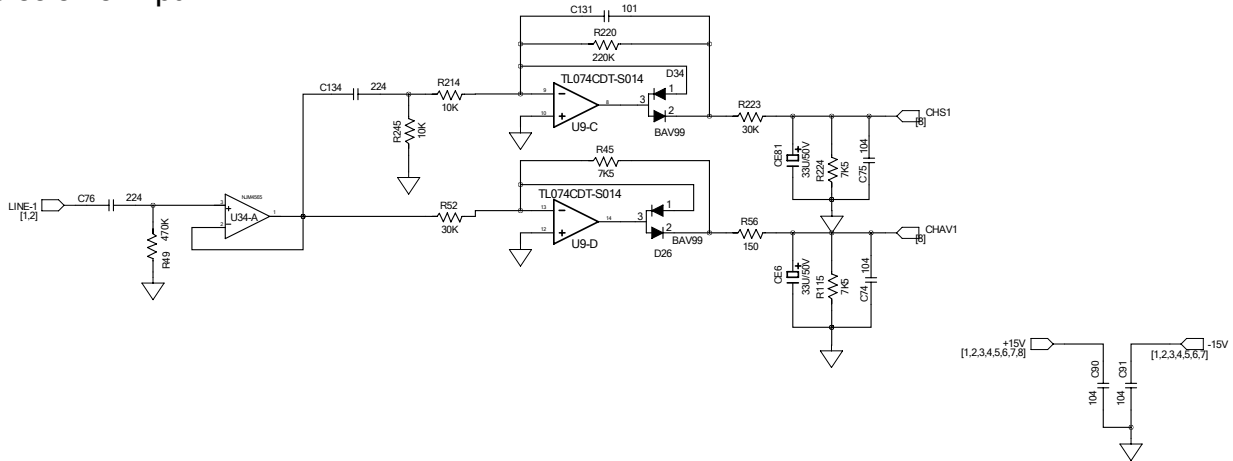
BPF (65Hz ~ 18kHz)

Limiter

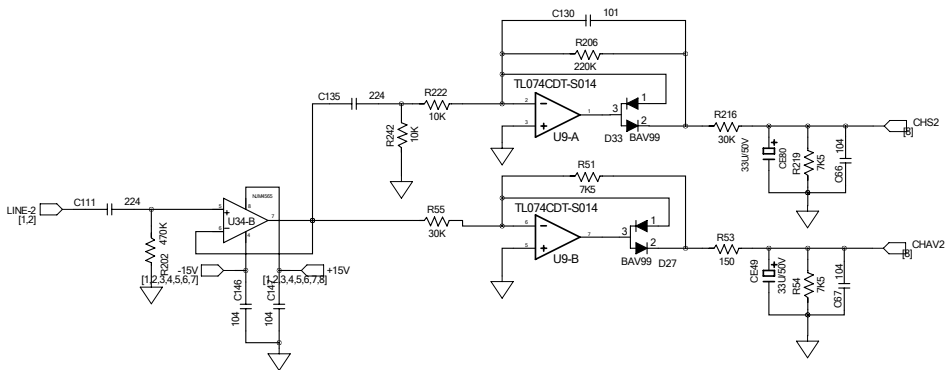
Balance Out



Detector for Input 1



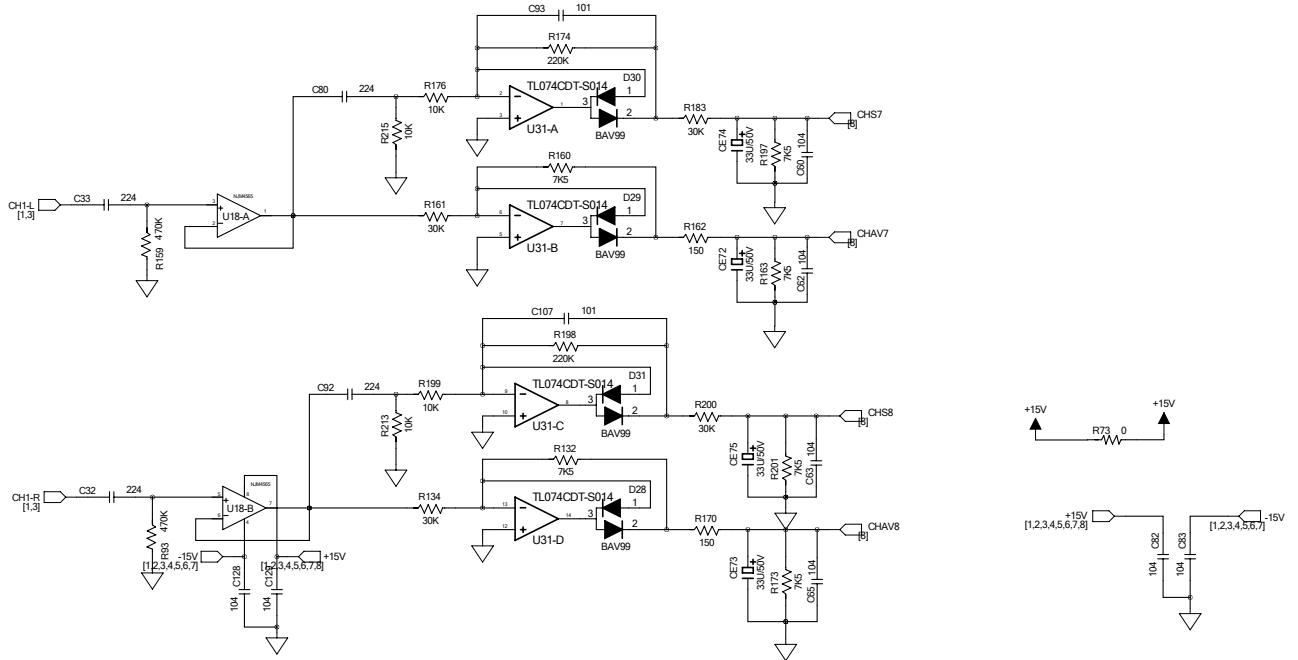
Detector for Input 2



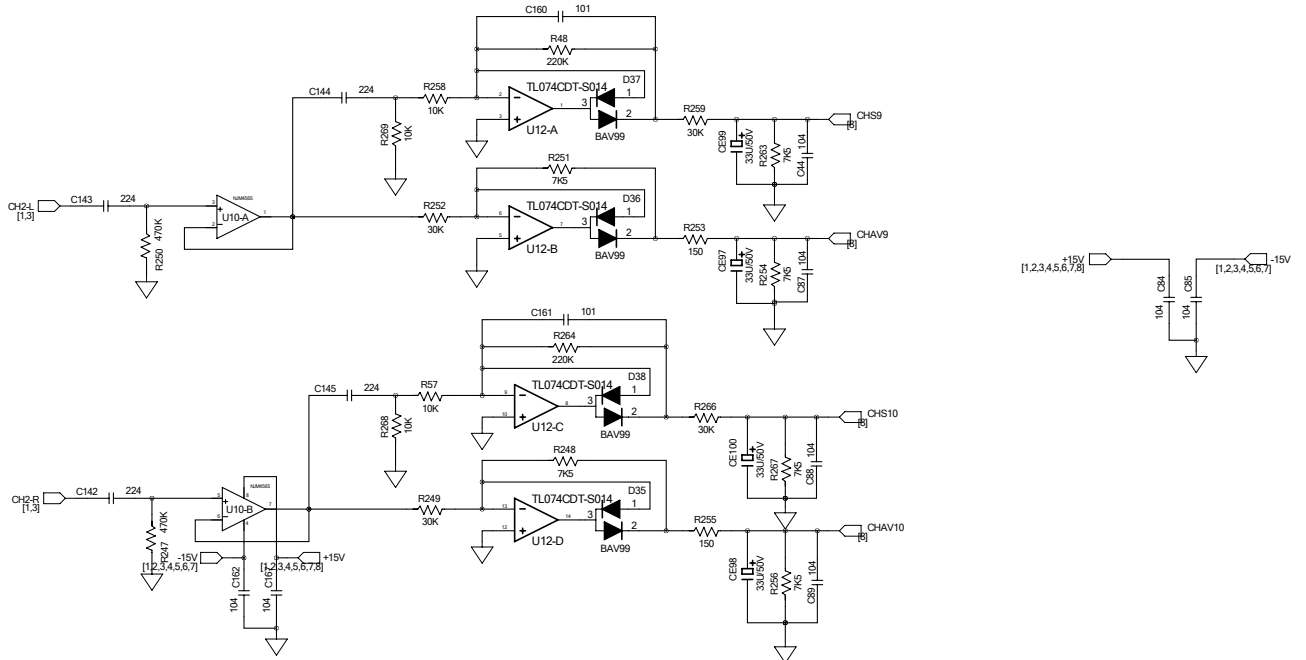


Mixer Schematic Diagram 6/8

Detector for Input 3

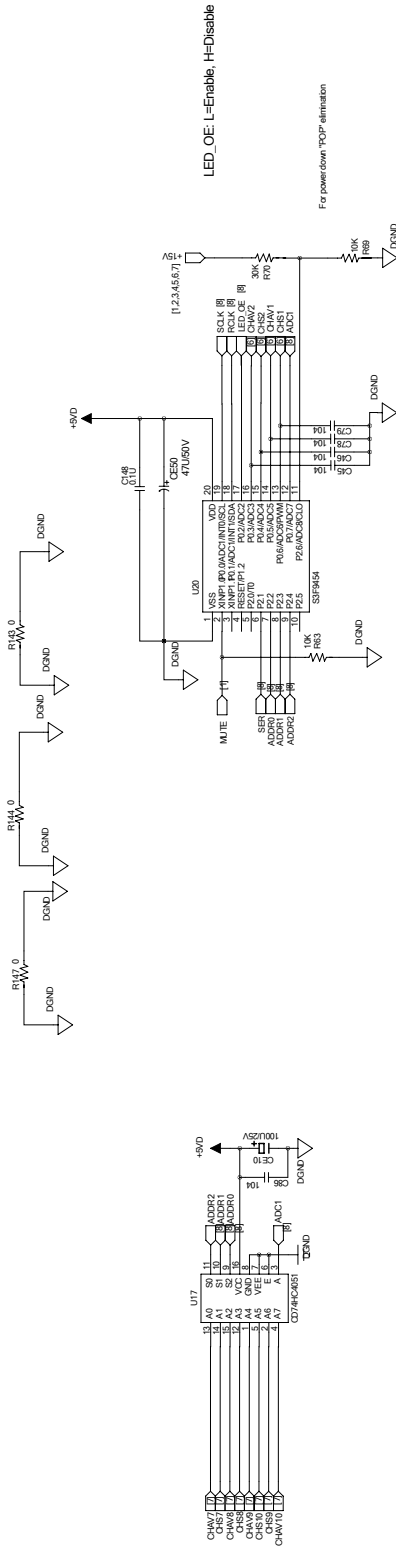


Detector for Input 4

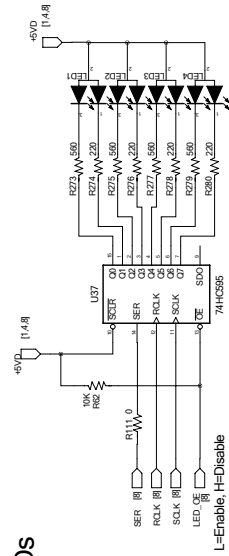


Passport
 BY Fender
 Mixer Schematic Diagram 7/8

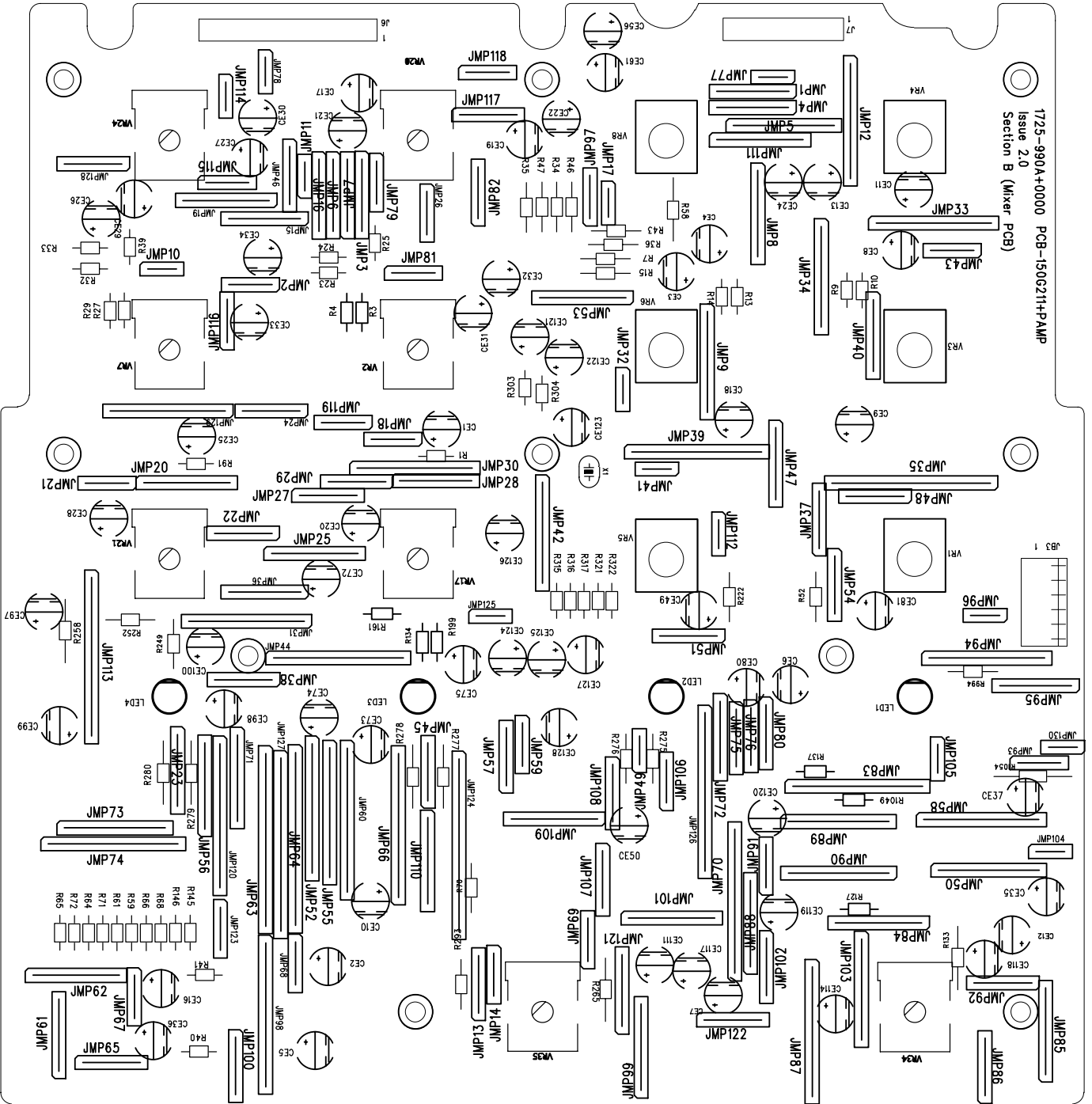
MCU for Present/Clip Signal



Signal Present/Clip LEDs



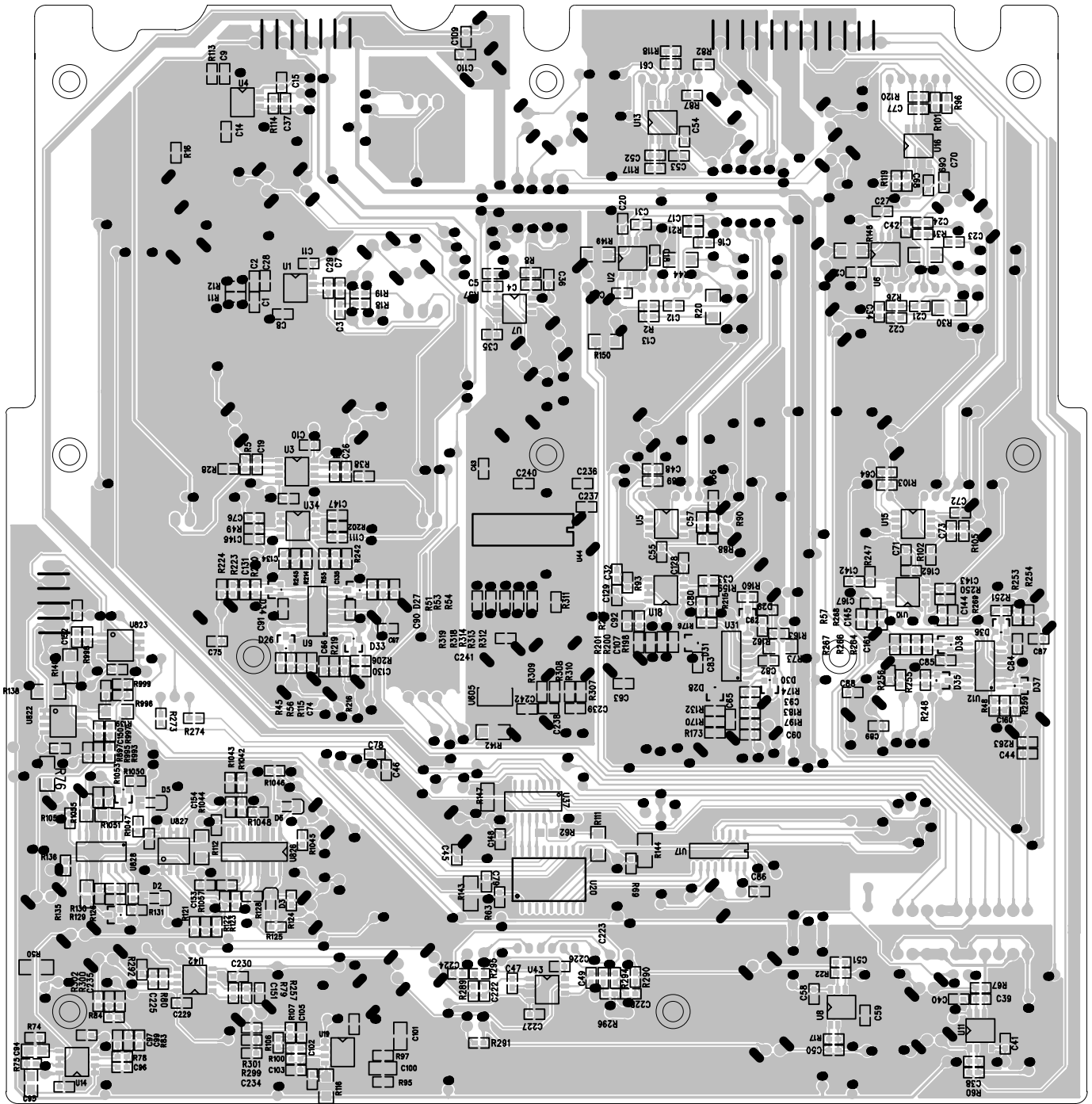
1725-990A+0000 PCB-1506211+PAMP
Issue 2.0
Section B (Mixer PCB)



Mixer PCB top side

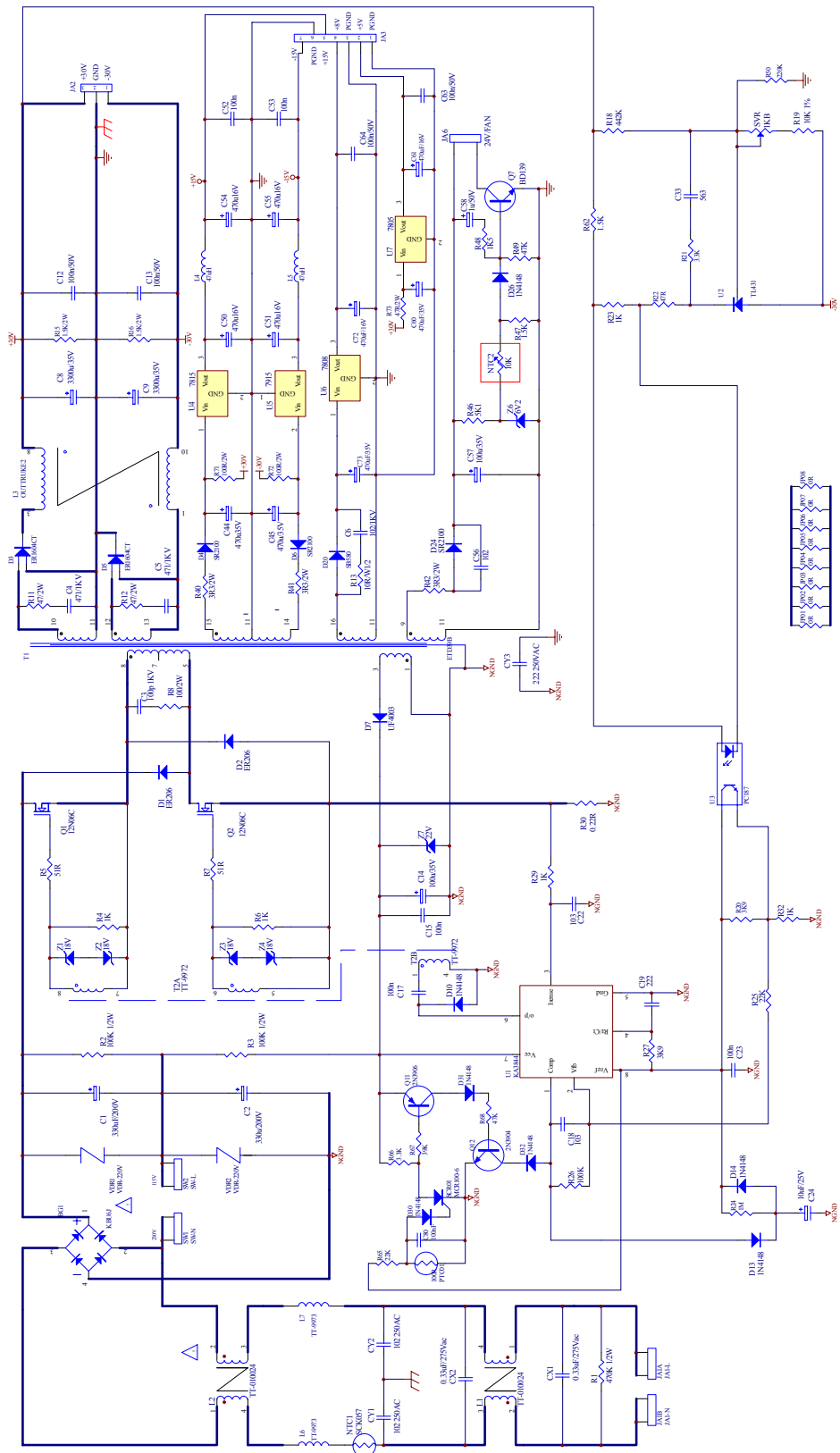


Mixer PCB

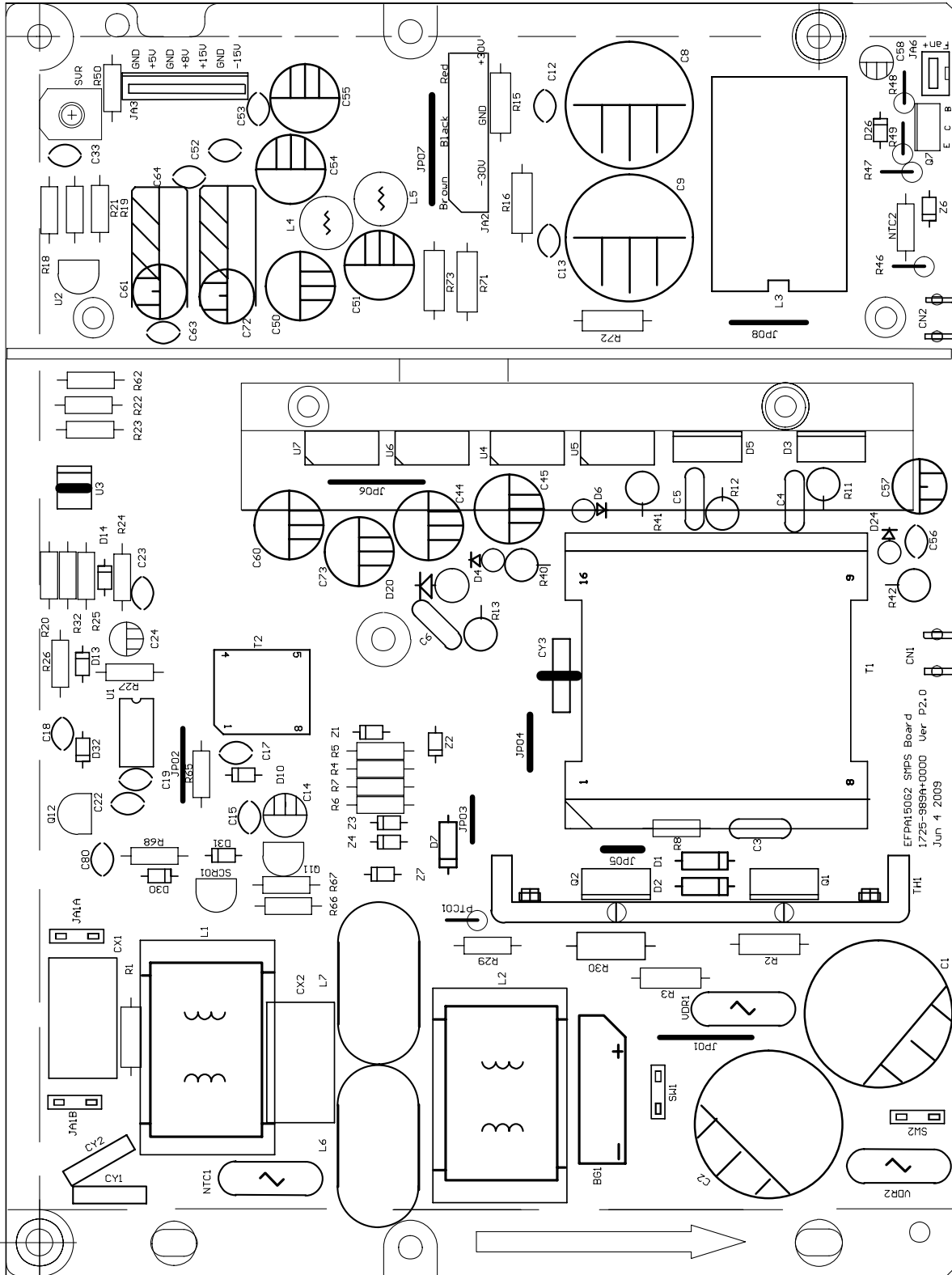


Mixer PCB bottom side





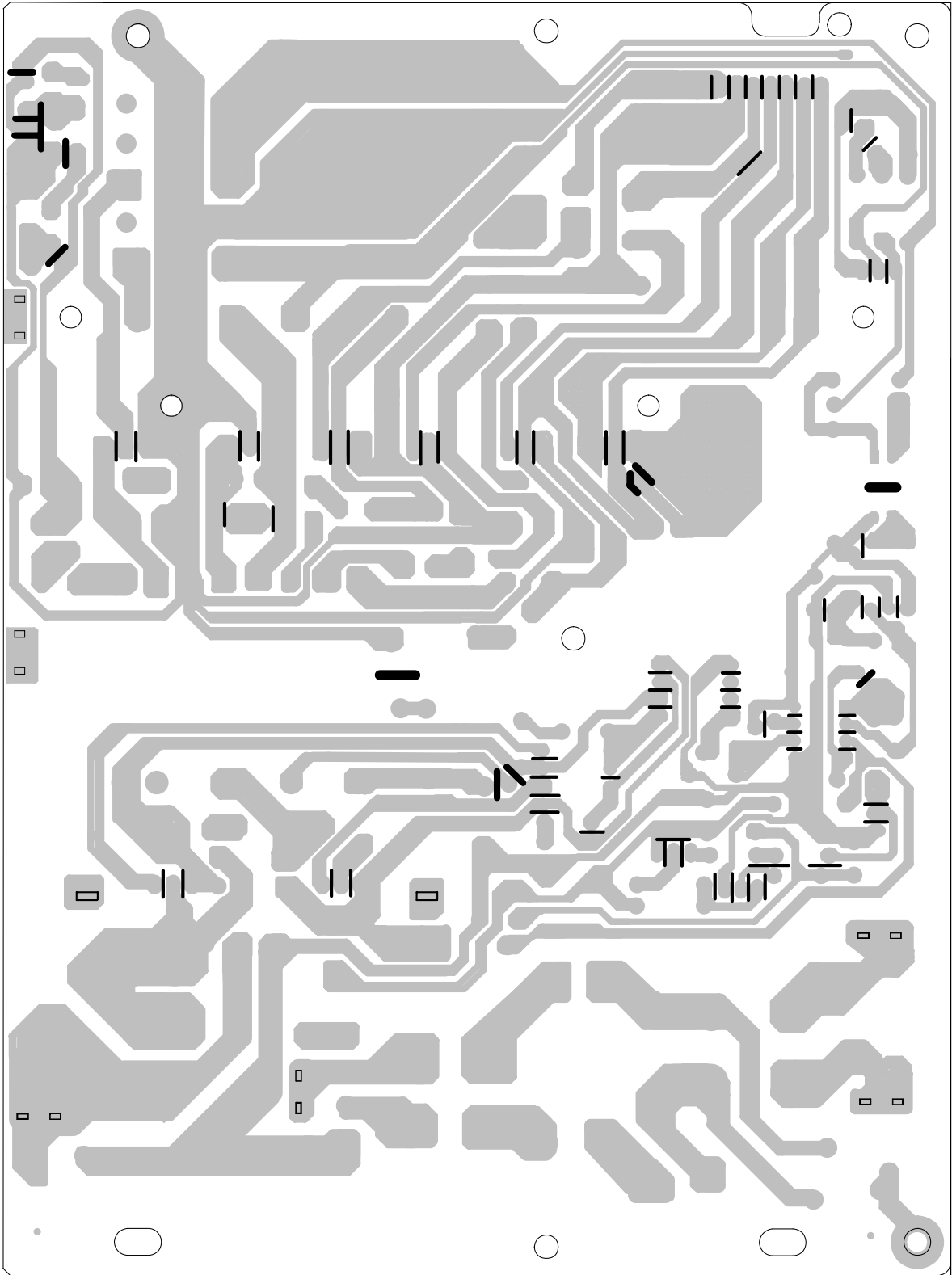
Passport
By Fender
SMPS Schematic Diagram



SMPS PCB top side



SMPS PCB

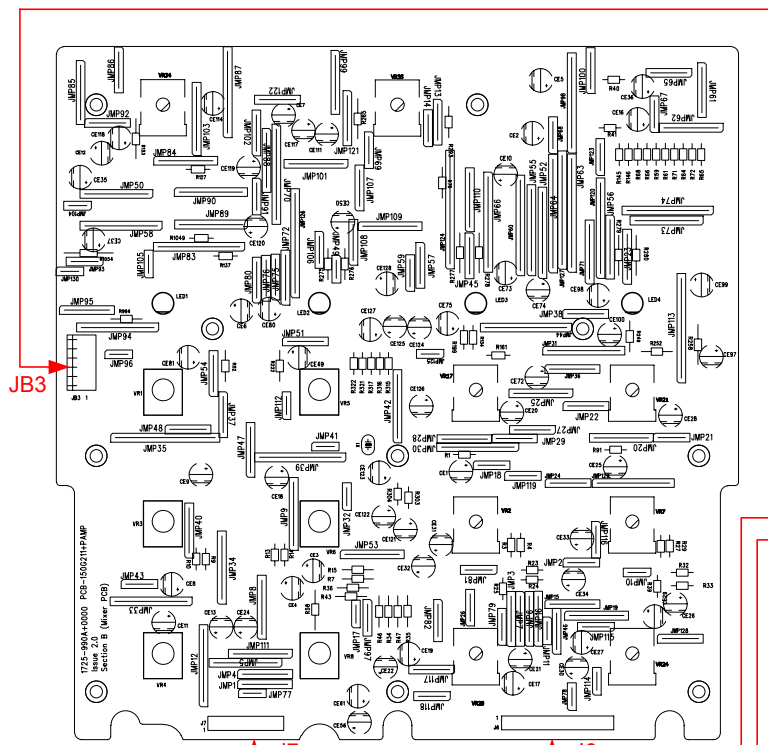


SMPS PCB bottom side

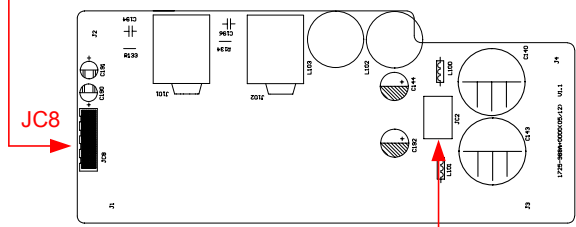


SMPS PCB

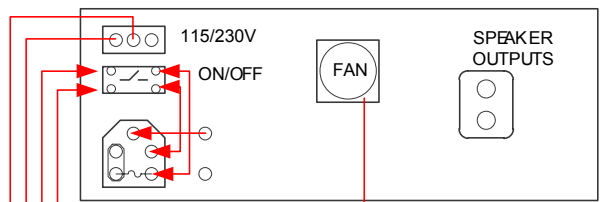
Mixer Board



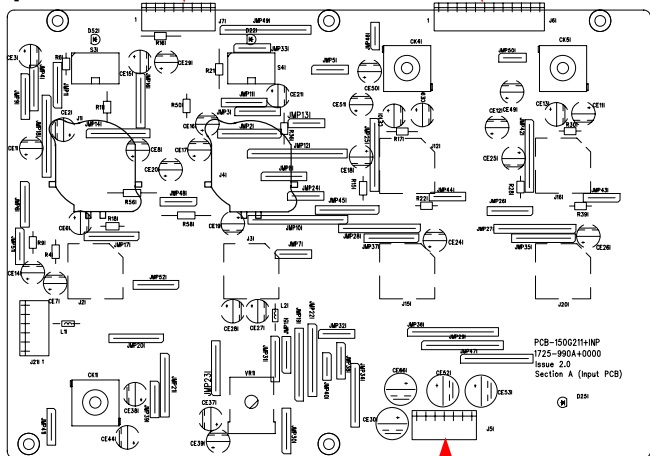
Amp Board



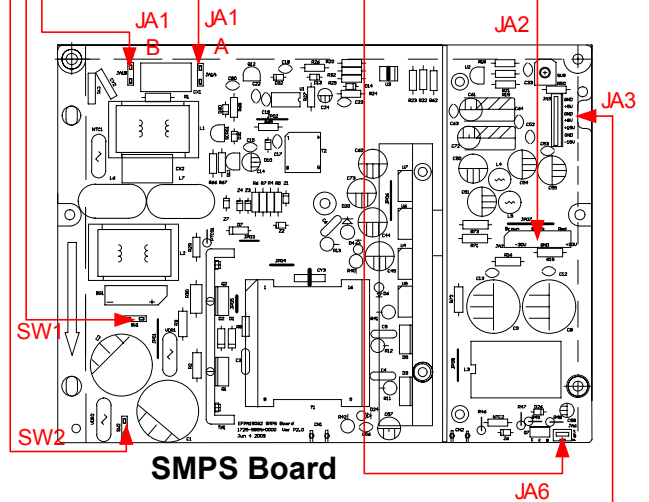
Rear Panel



Input Board



SMPS Board



Wiring Diagram