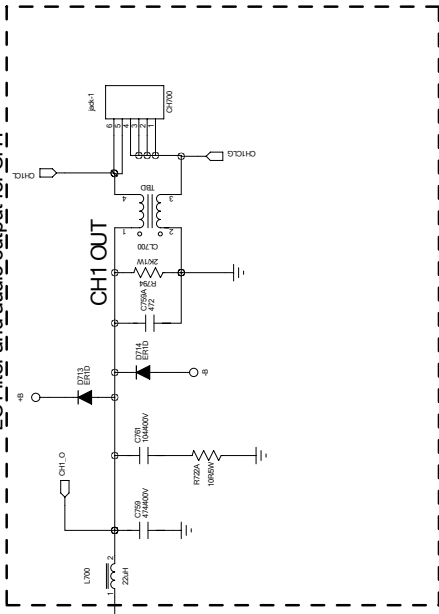
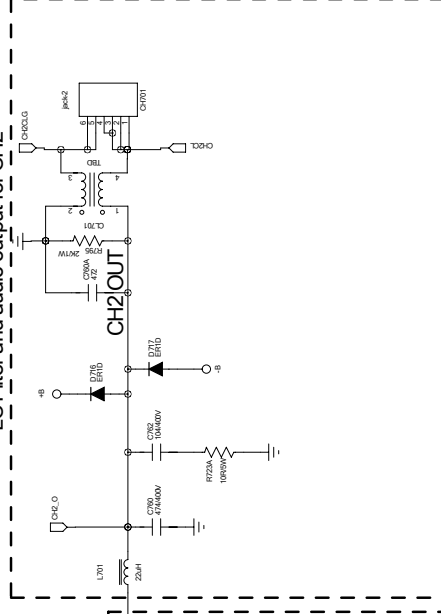


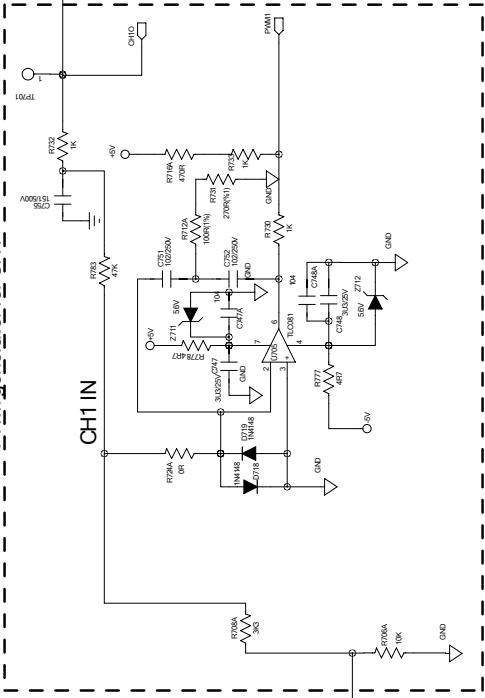
LC Filter and audio output for CH1



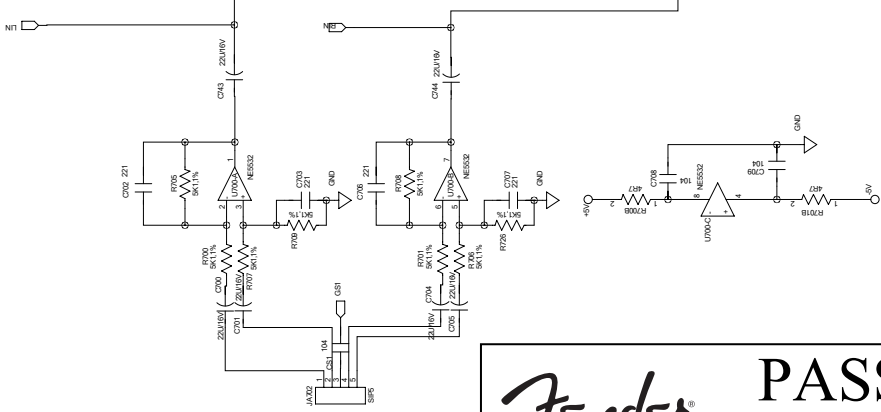
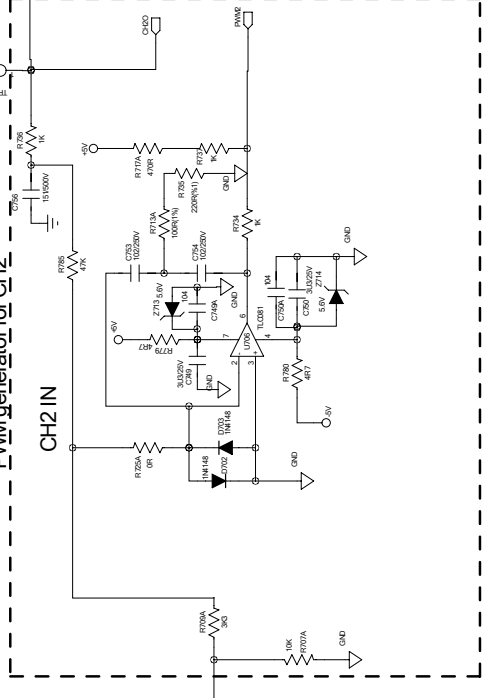
LC Filter and audio output for CH2



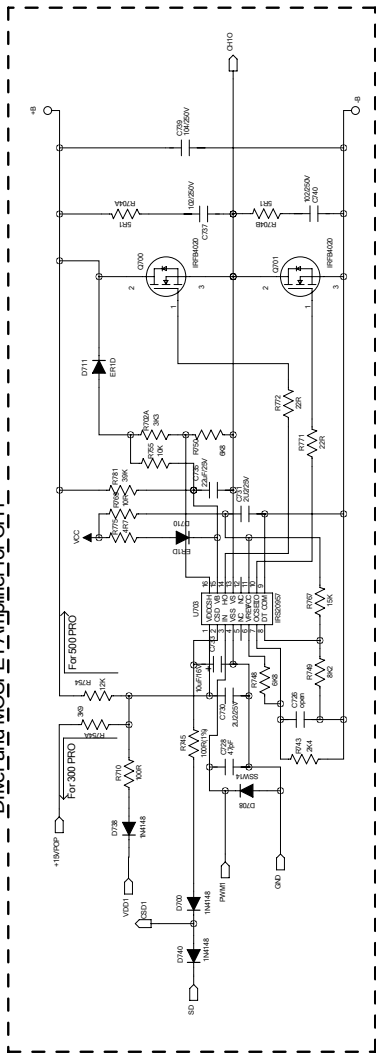
PWM generator for CH1



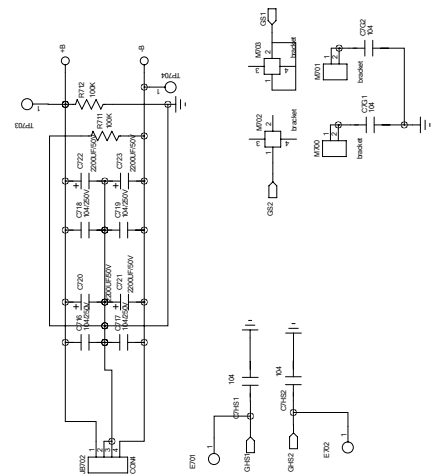
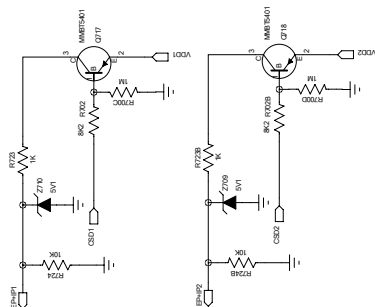
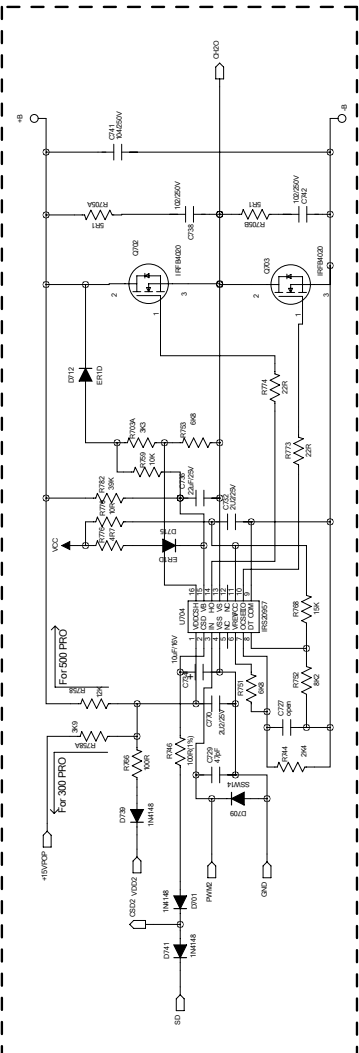
PWM generator for CH2

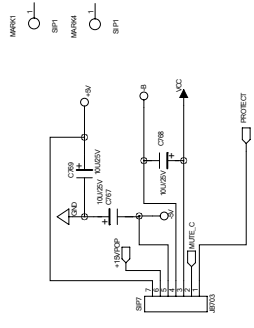
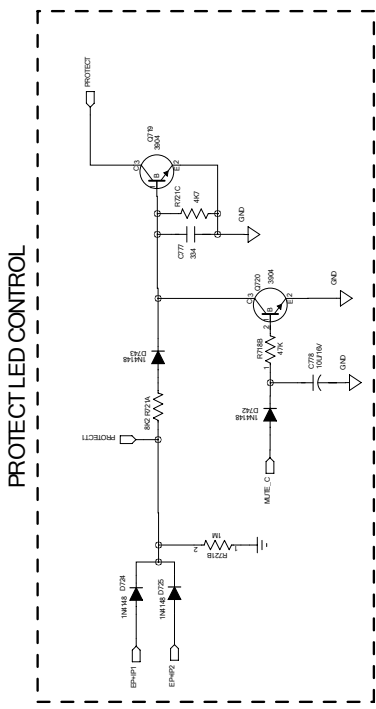
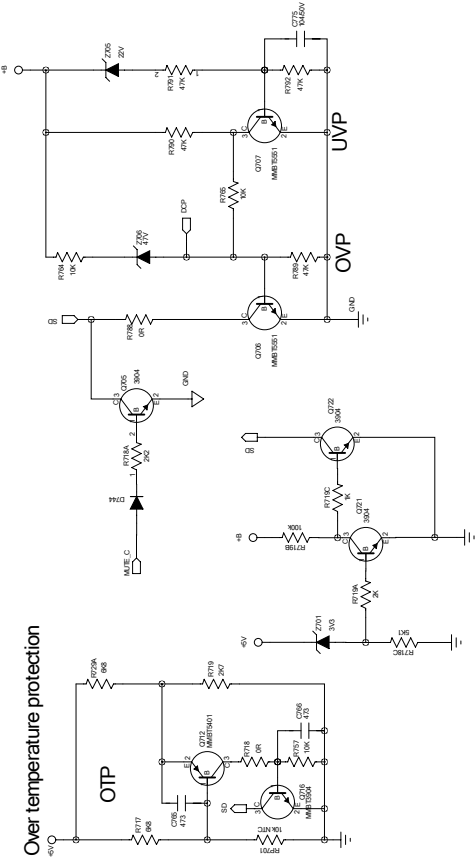
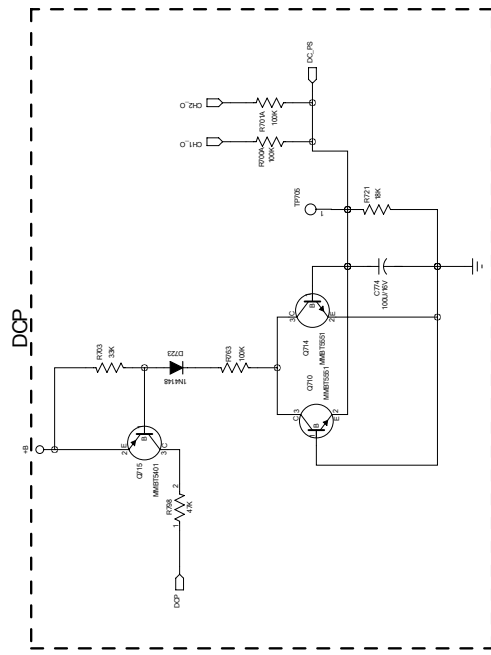


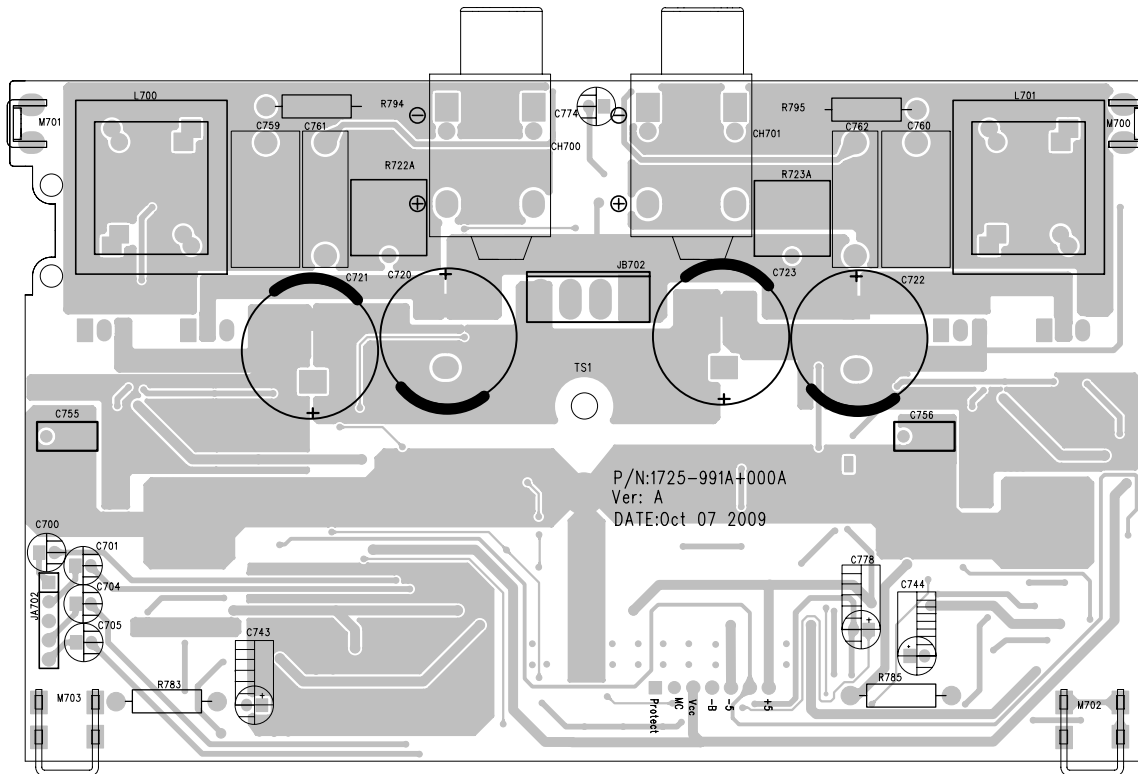
Driver and MOSFET Amplifier for CH1



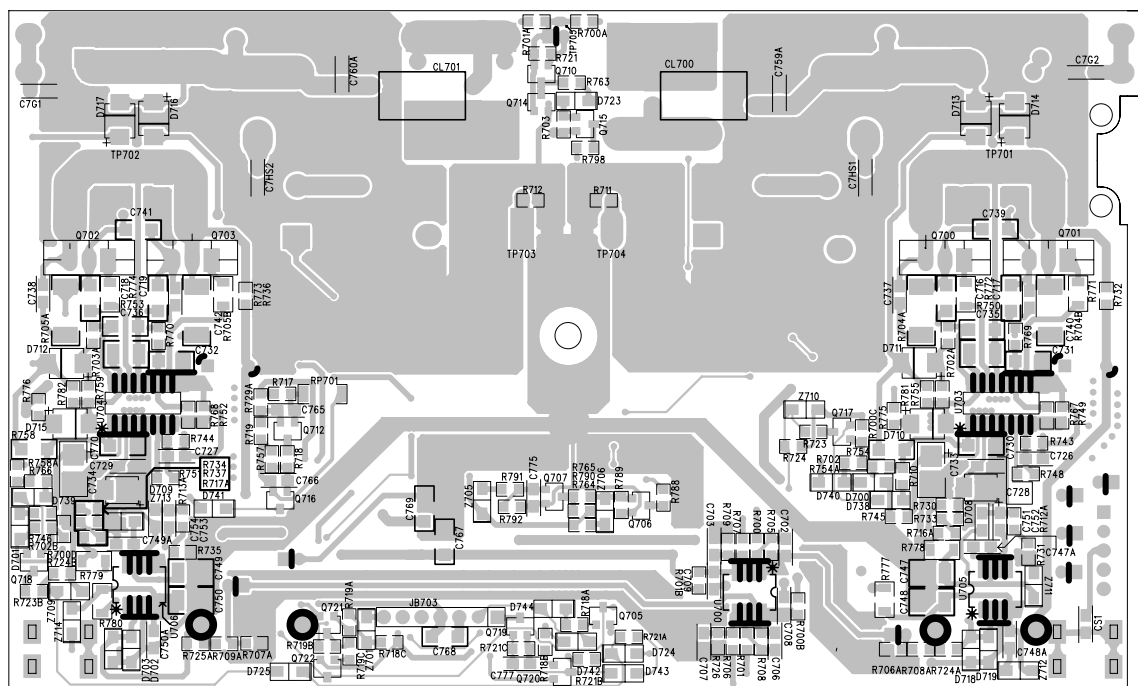
Driver and MOSFET Amplifier for CH2





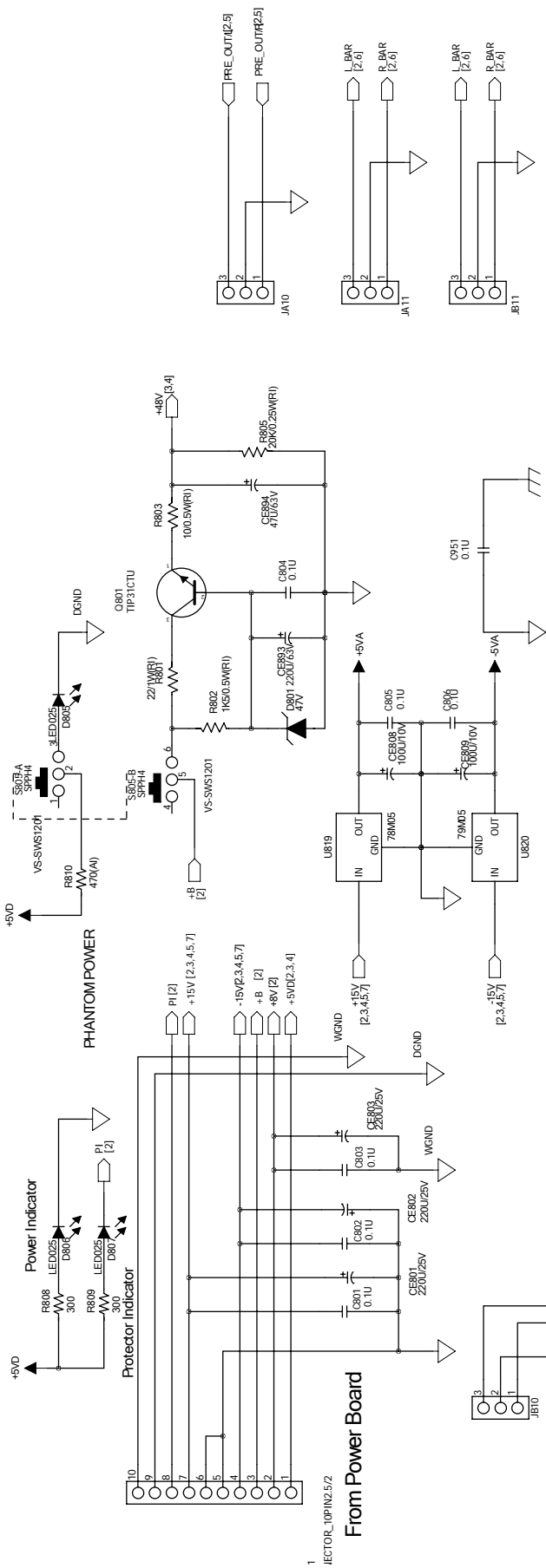


AMP PCB top side

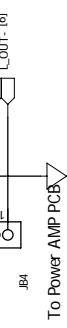
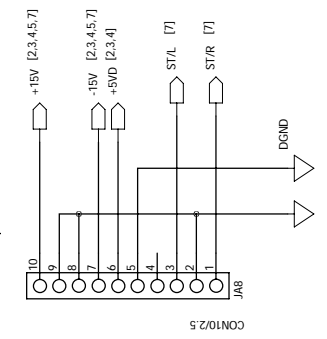
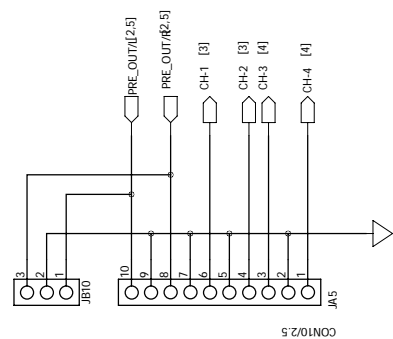


AMP PCB bottom side

Fender **PASSPORT**
 AMP PCB



TO WIRELESS BOARD

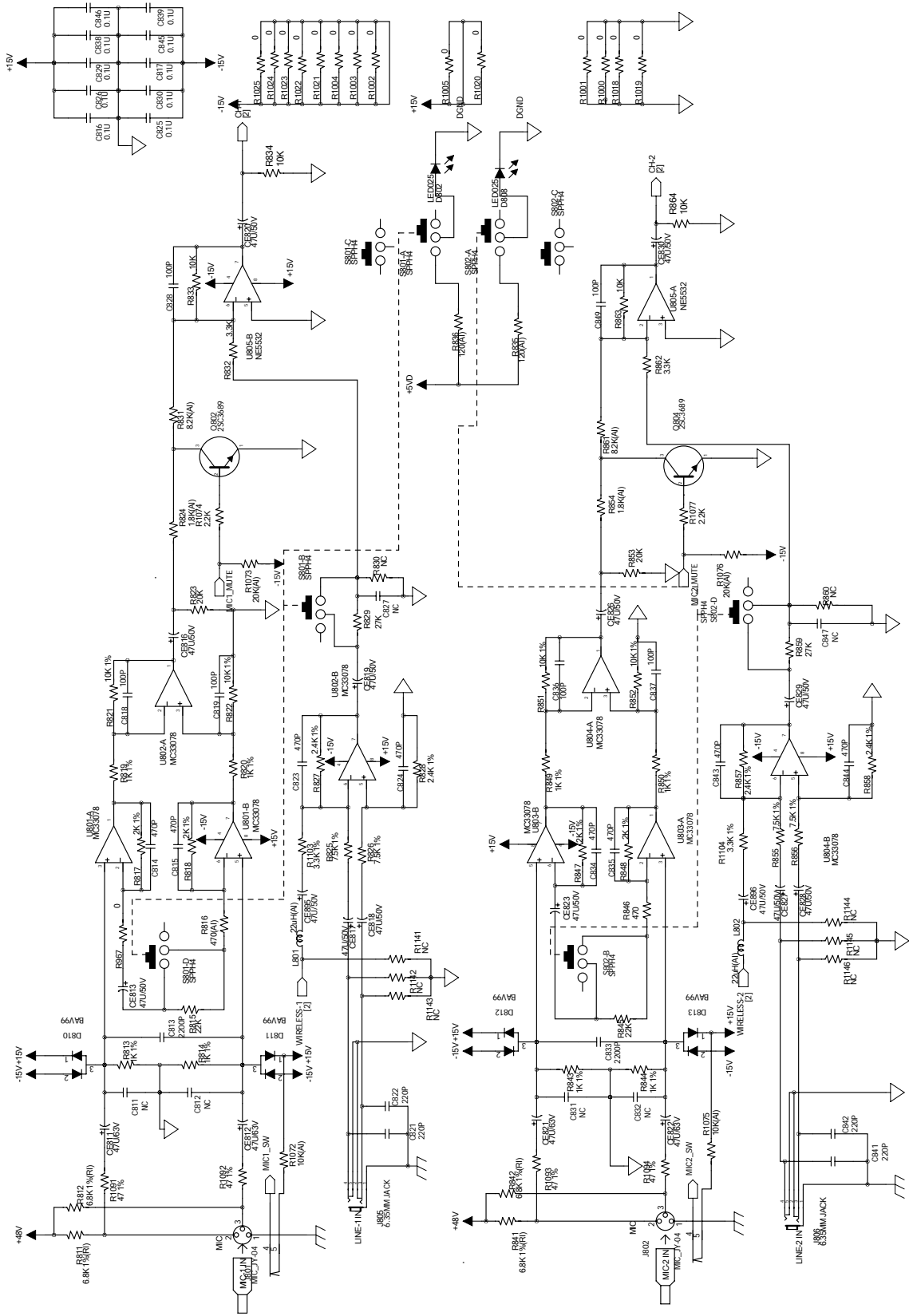


To Power AMP PCB

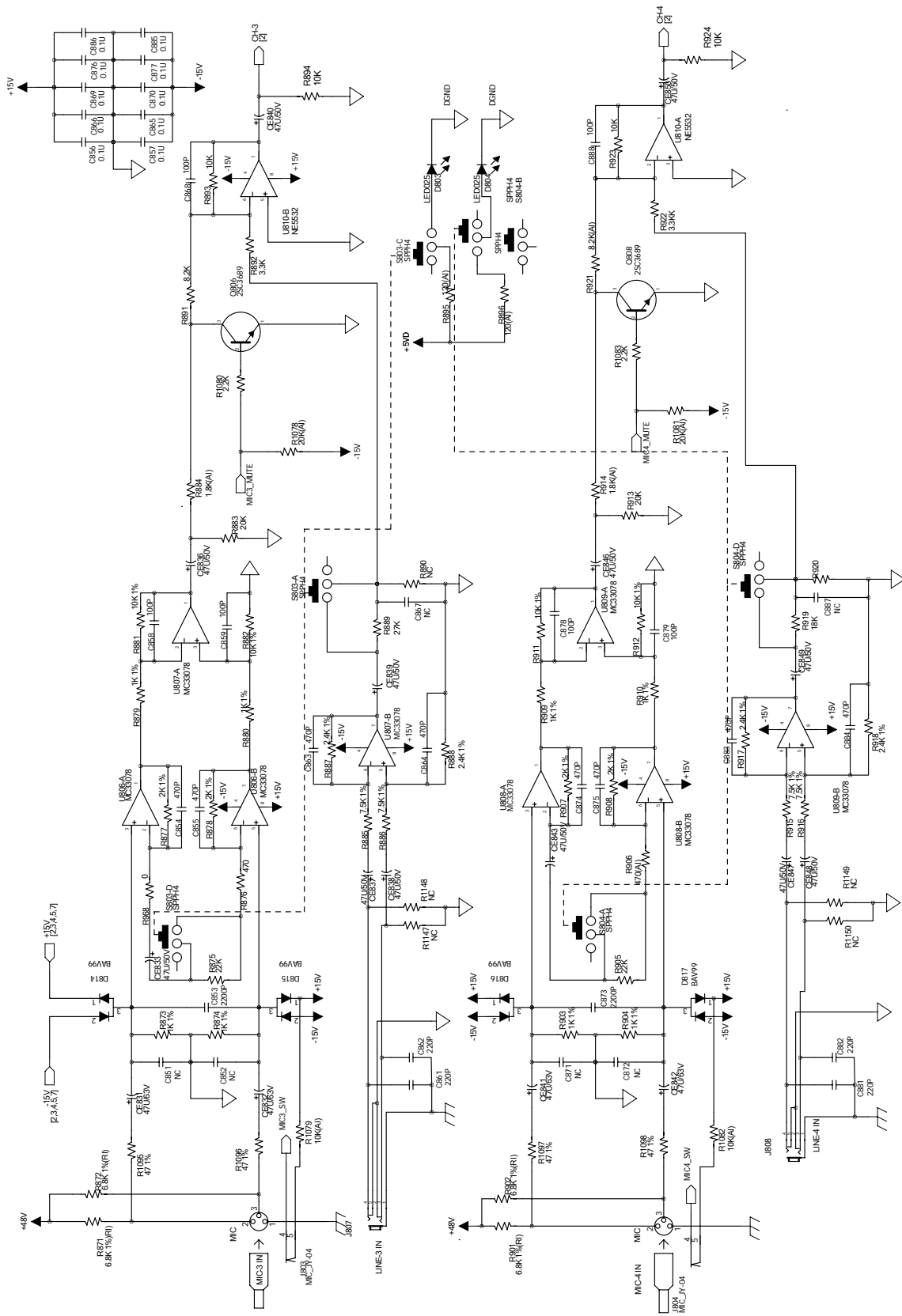
For Grounding Option

Connect to Mixer Board

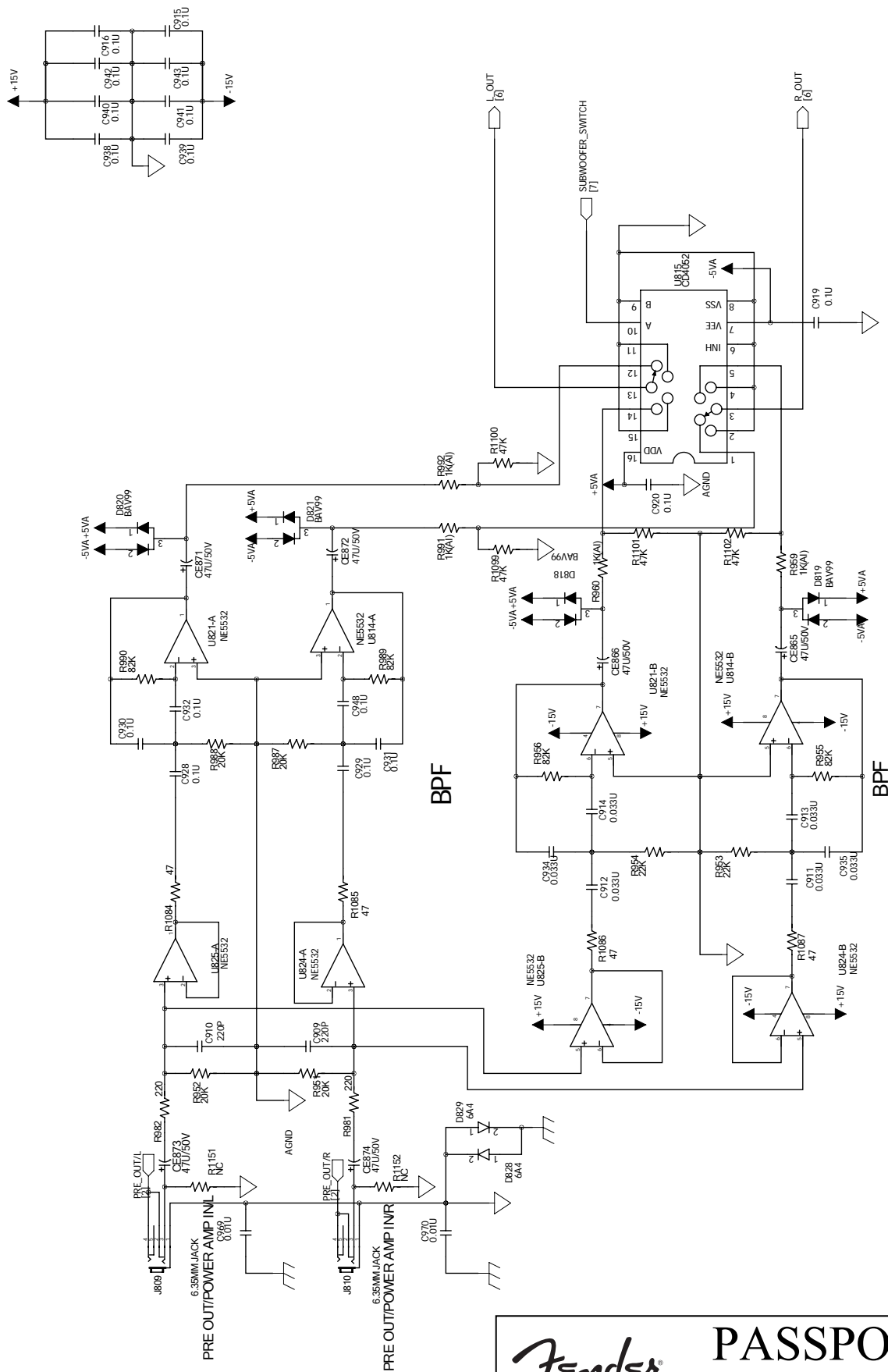
Fender **PASSPORT**
 Input Schematic Diagram – 1/6



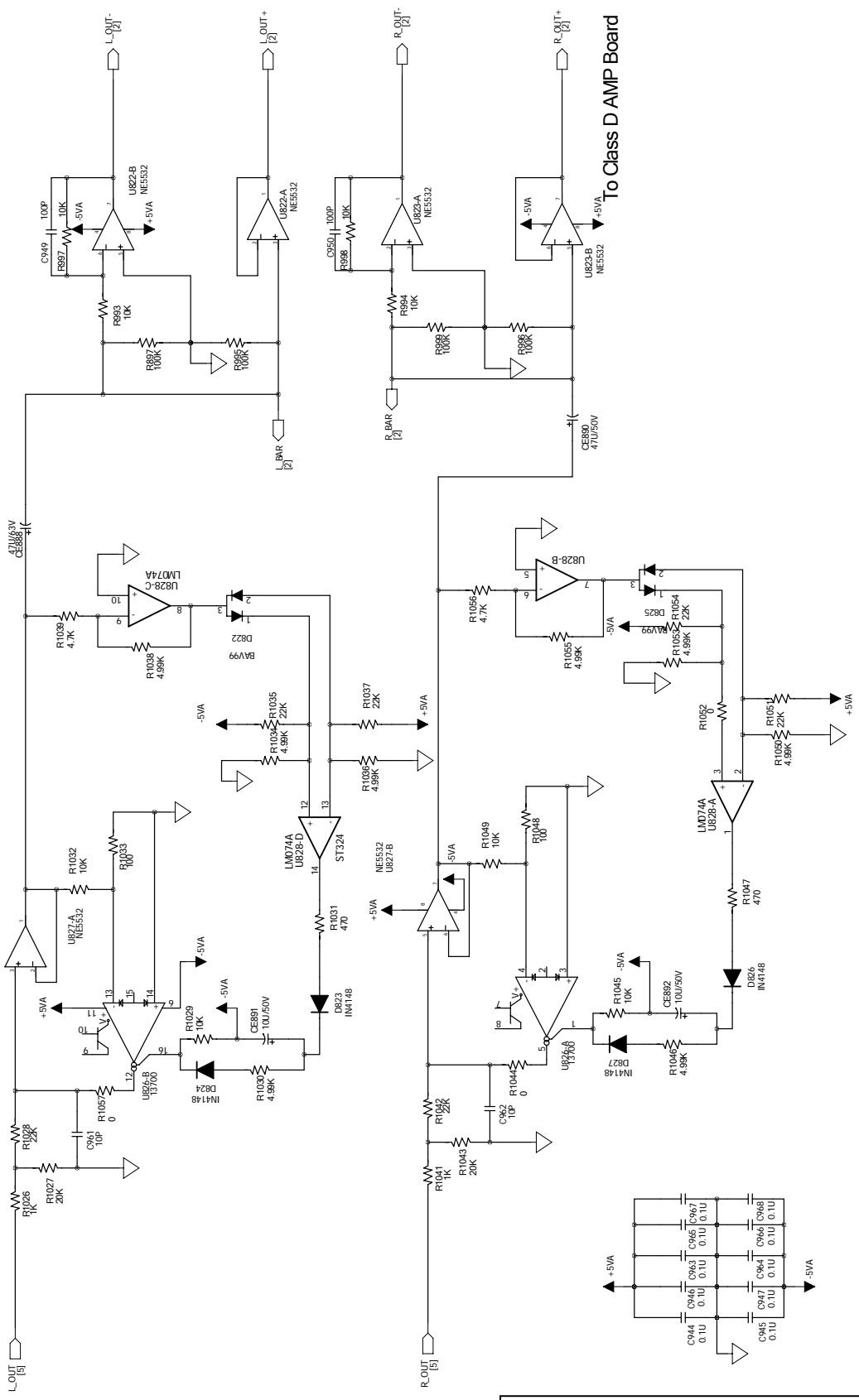
Fender **PASSPORT**
Input Schematic Diagram – 2/6



Fender **PASSPORT**
Input Schematic Diagram – 3/6

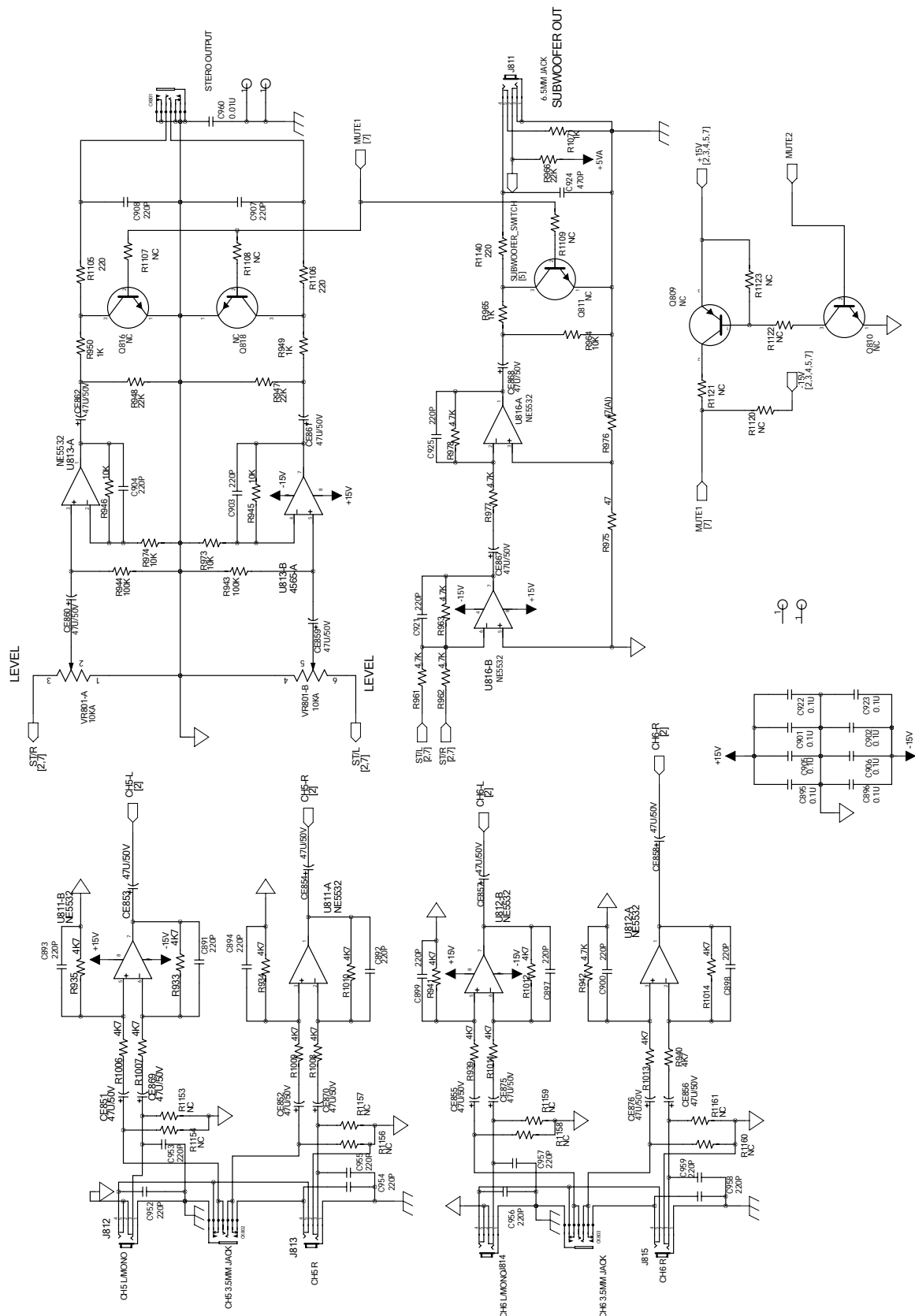


Fender **PASSPORT**
 Input Schematic Diagram – 4/6

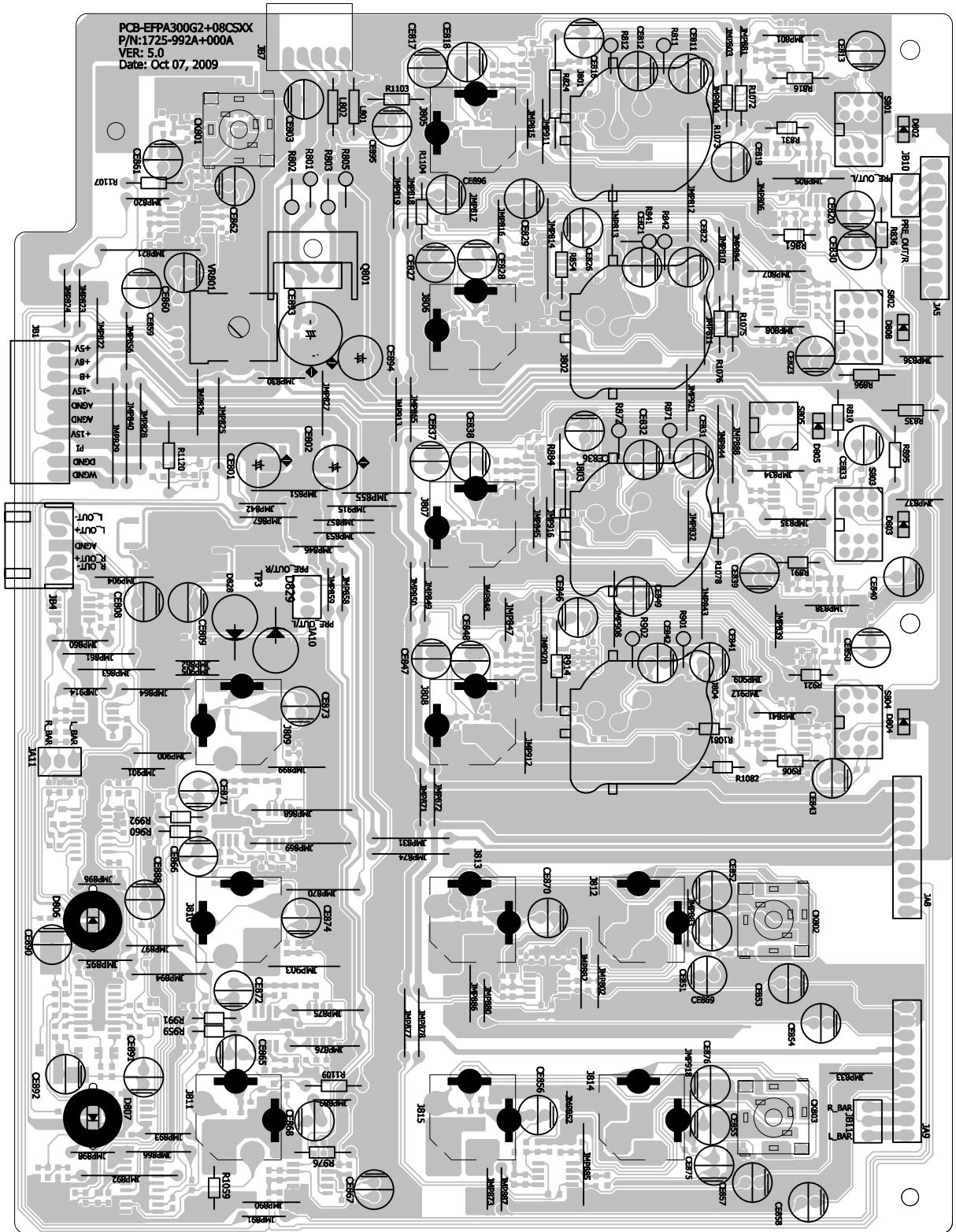


To Class D AMP Board

Fender PASSPORT
 Input Schematic Diagram – 5/6

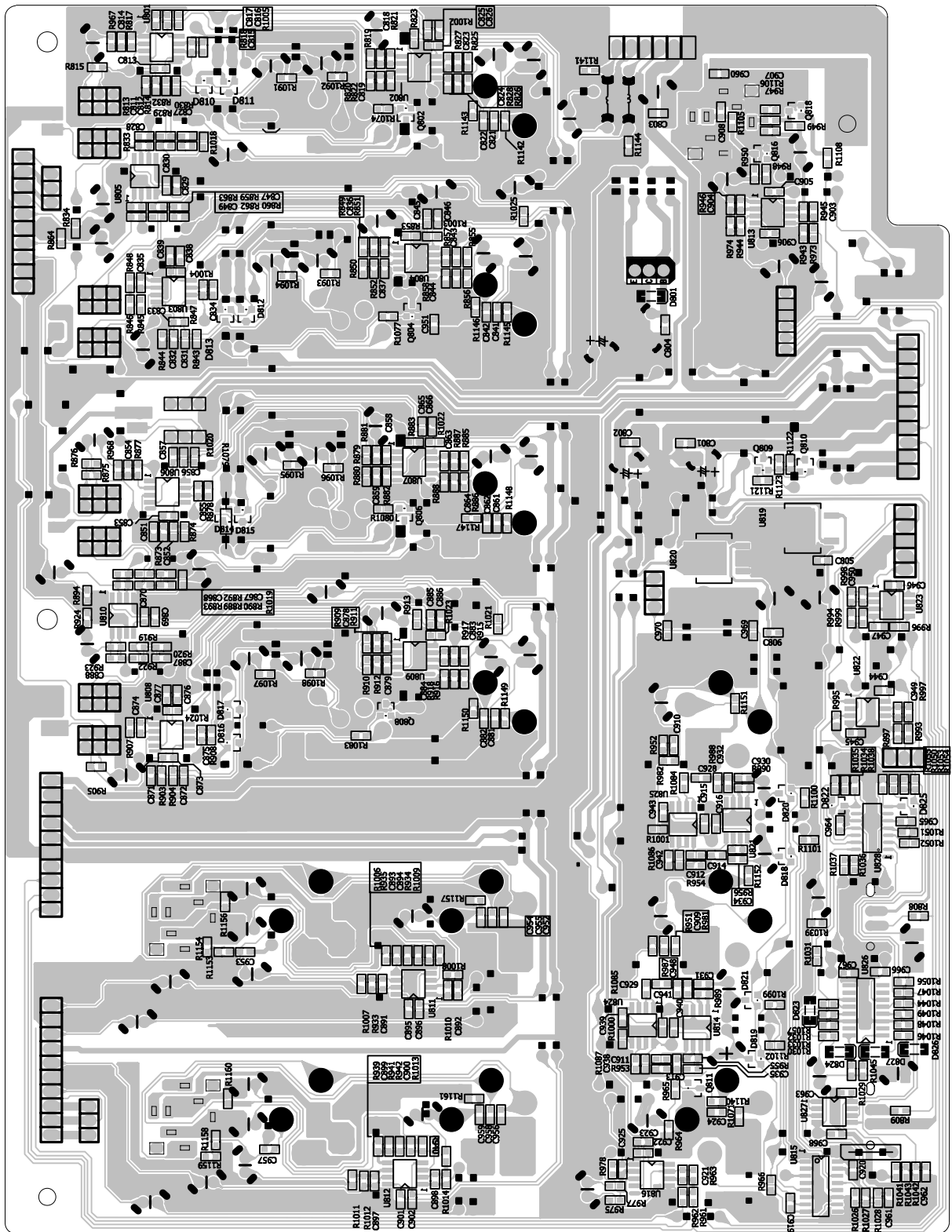


Fender PASSPORT
Input Schematic Diagram – 6/6



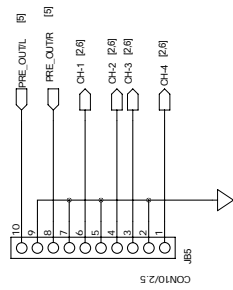
Input PCB top side

Fender **PASSPORT**
Input PCB

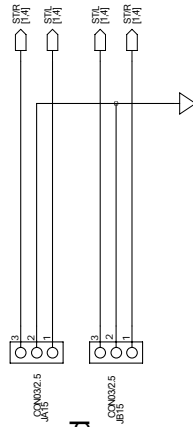


Input PCB bottom side

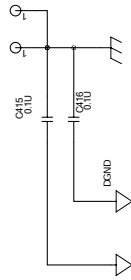
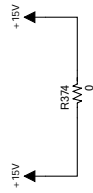
Fender **PASSPORT**
Input PCB



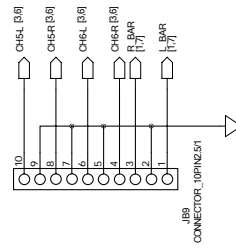
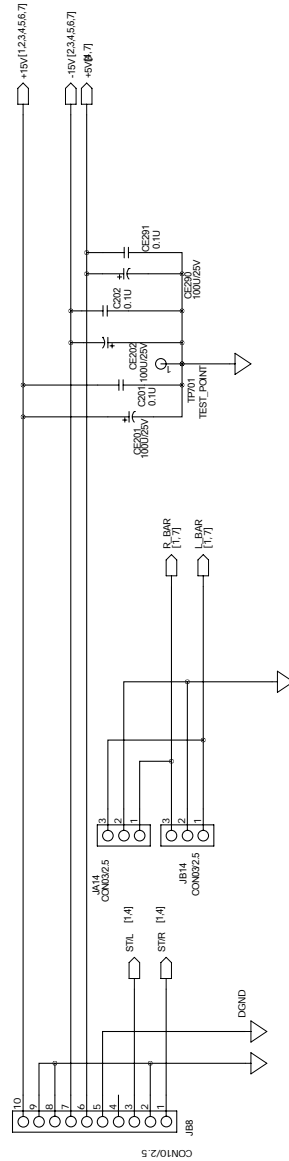
Connect to Preamp Board

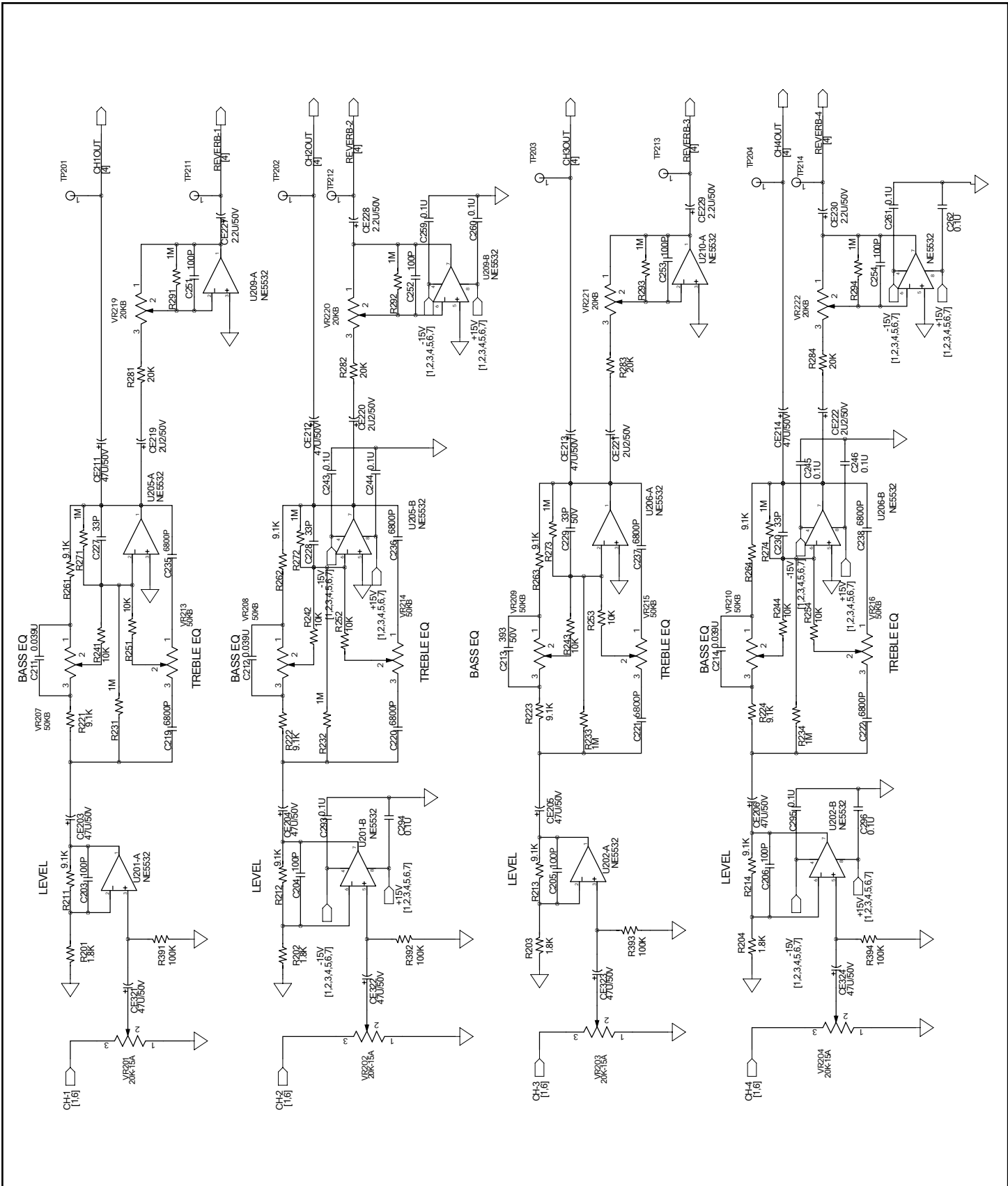


Connect to Preamp Board

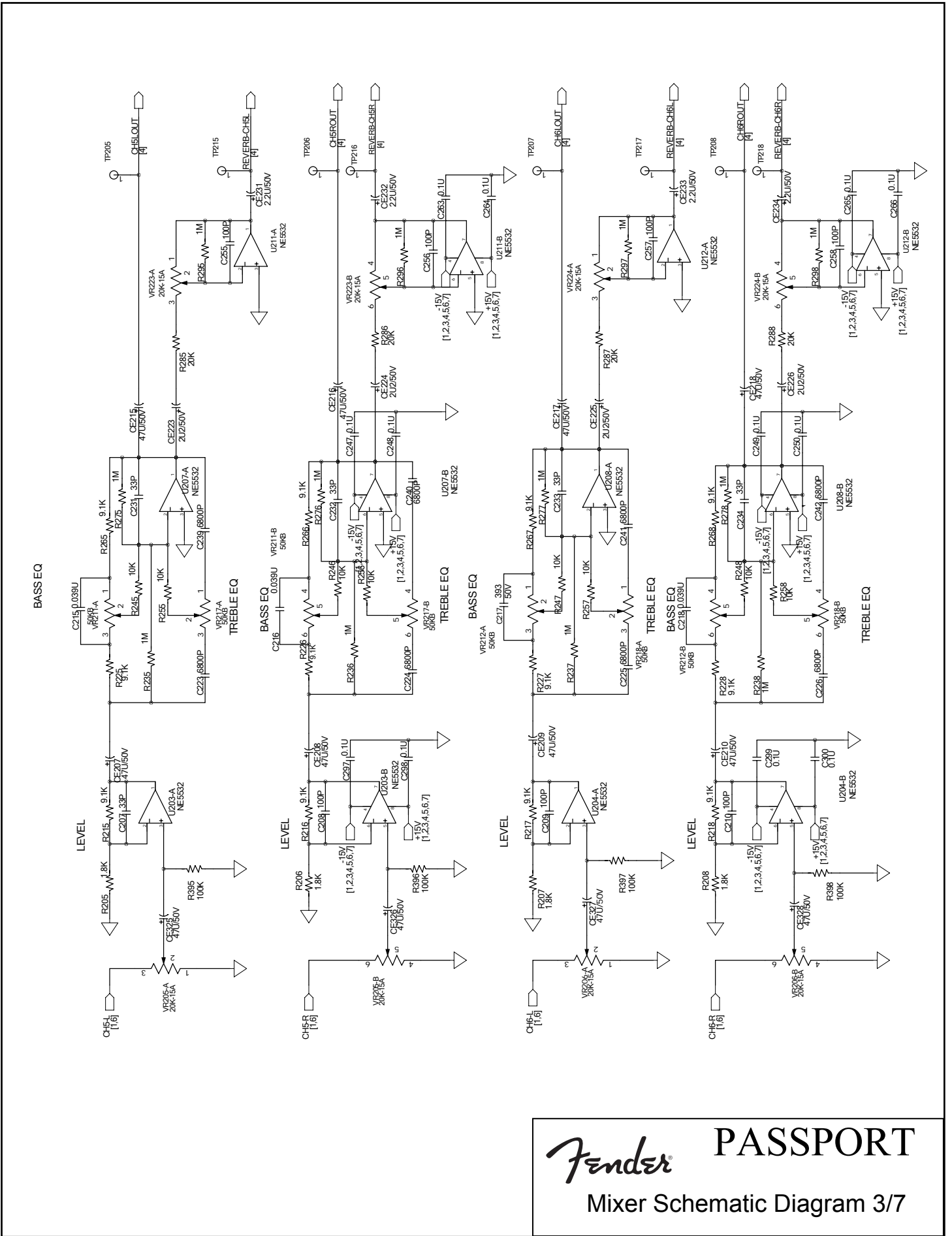


Connect to Preamp Board

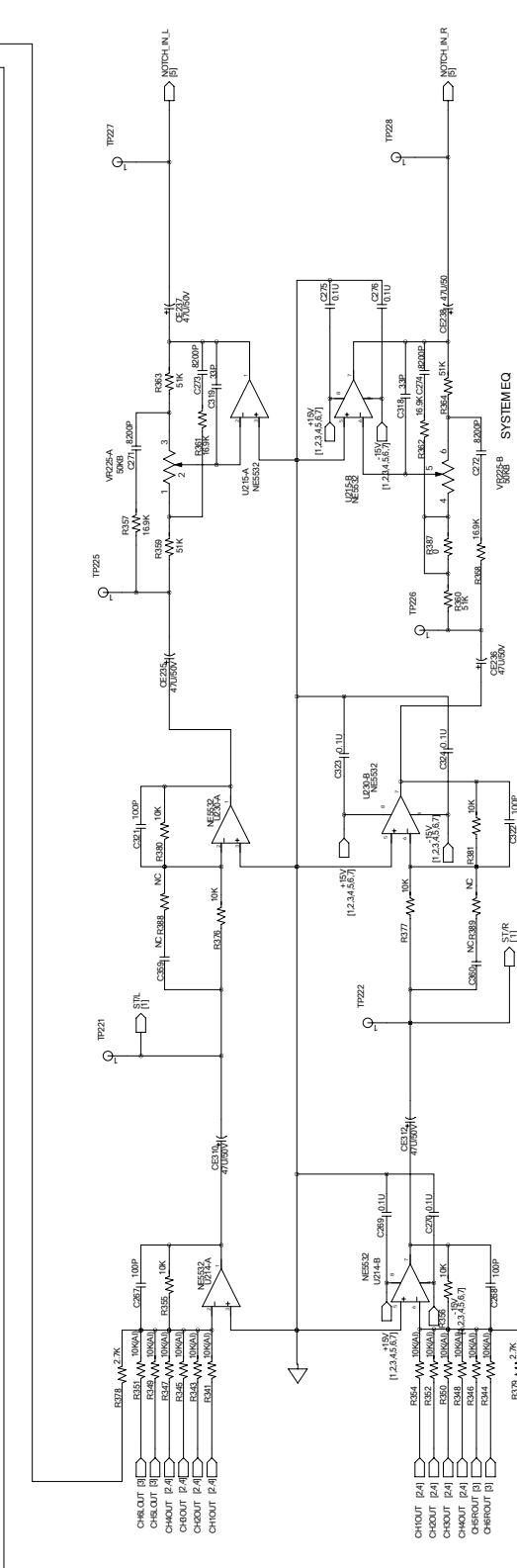
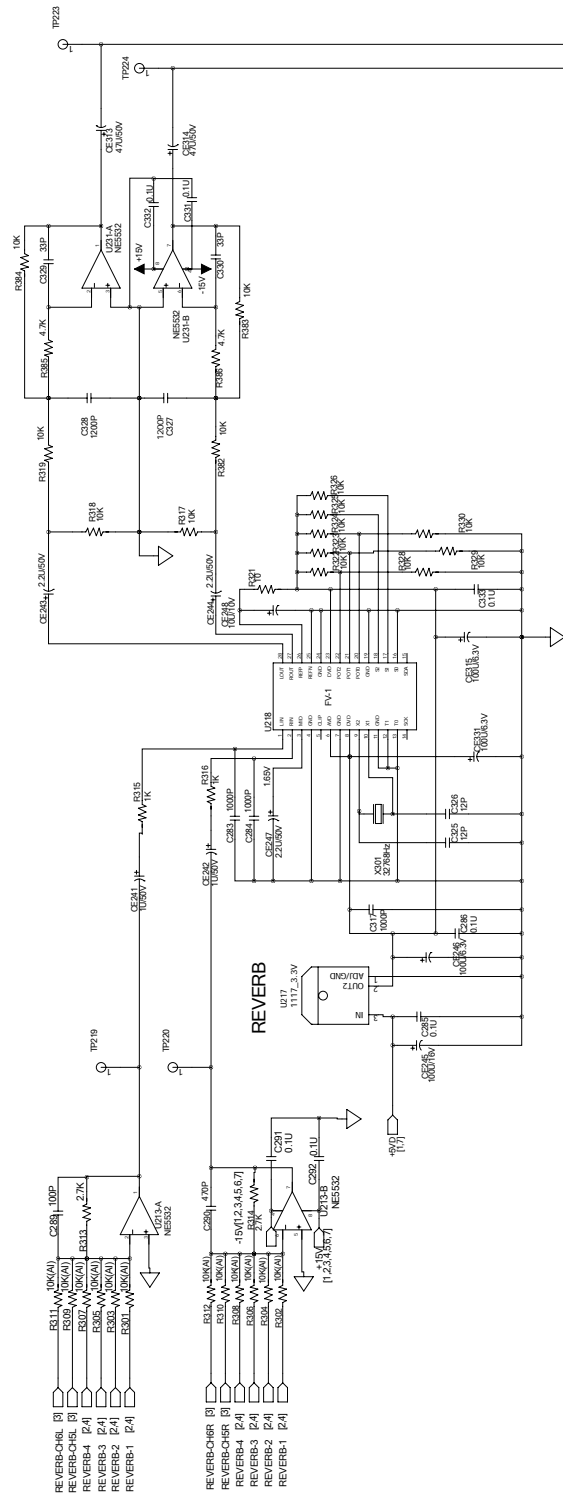




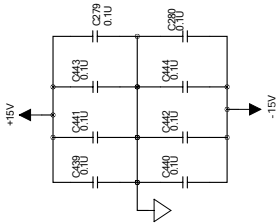
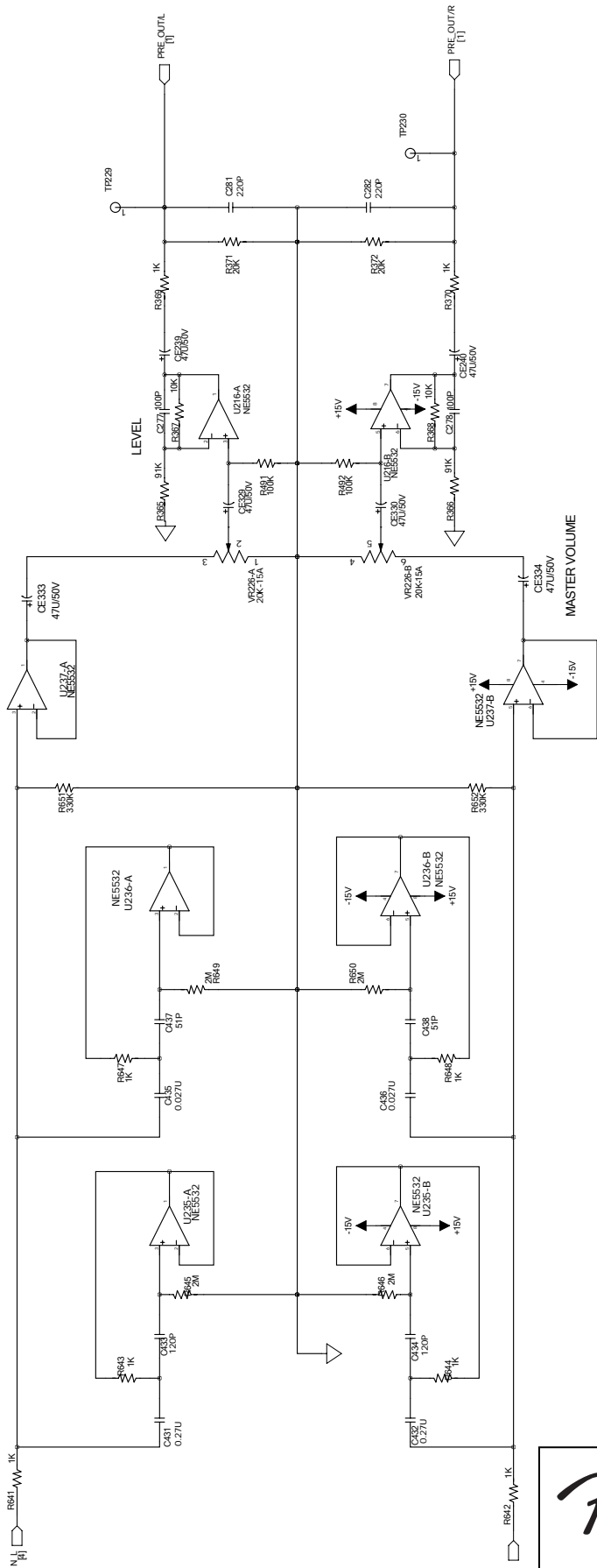
Fender **PASSPORT**
Mixer Schematic Diagram 2/7



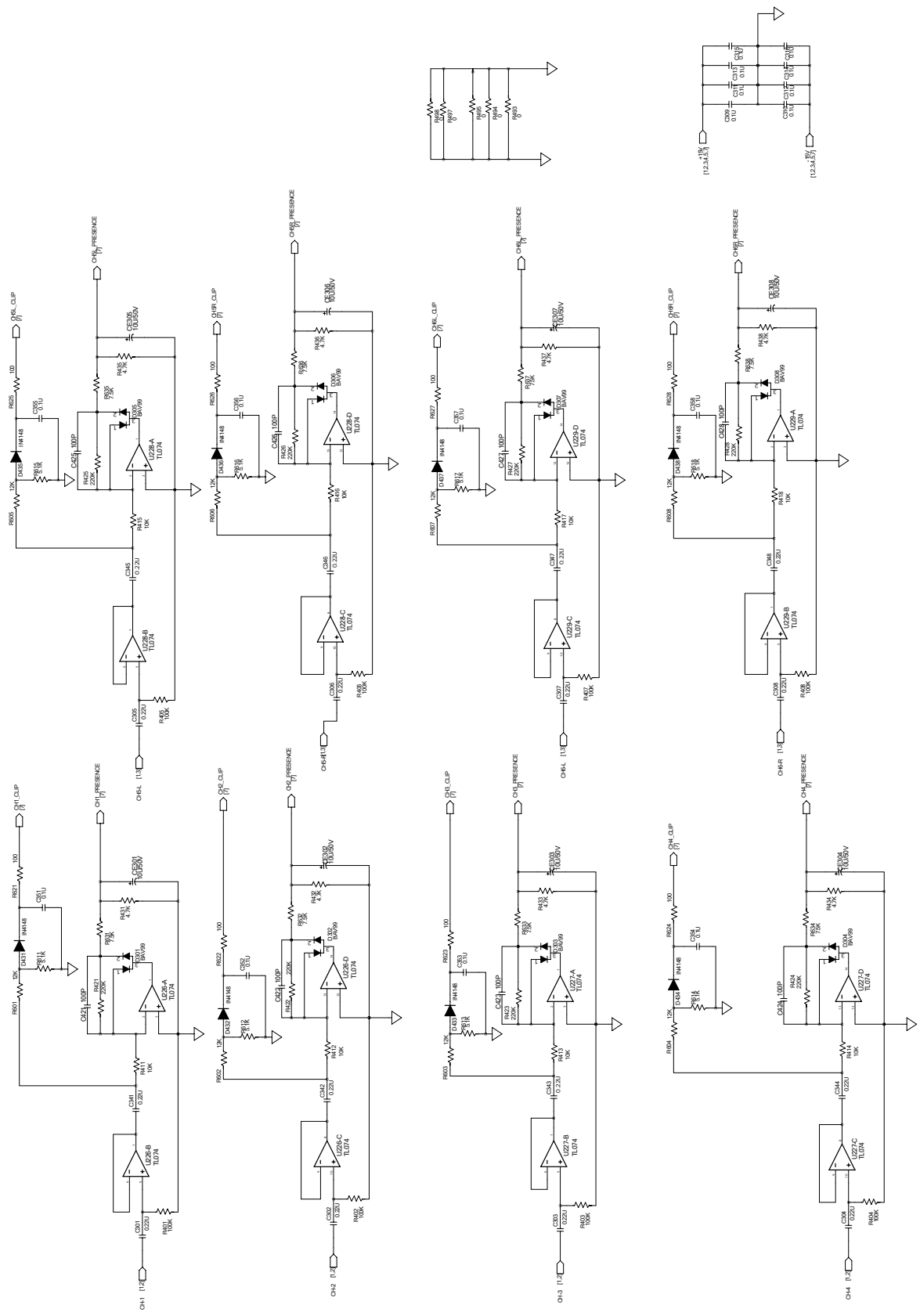

PASSPORT
 Mixer Schematic Diagram 3/7



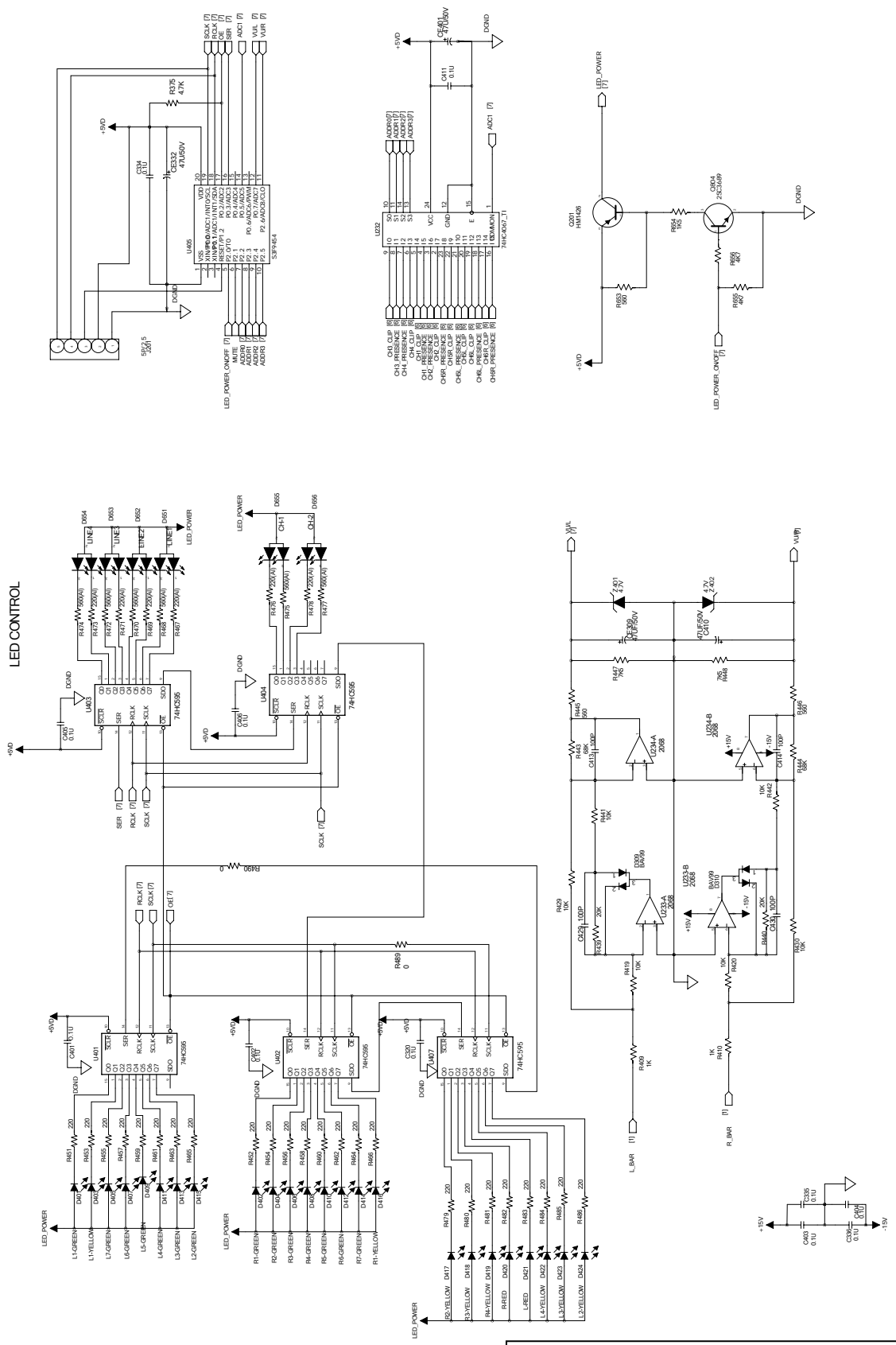
Fender **PASSPORT**
Mixer Schematic Diagram 4/7



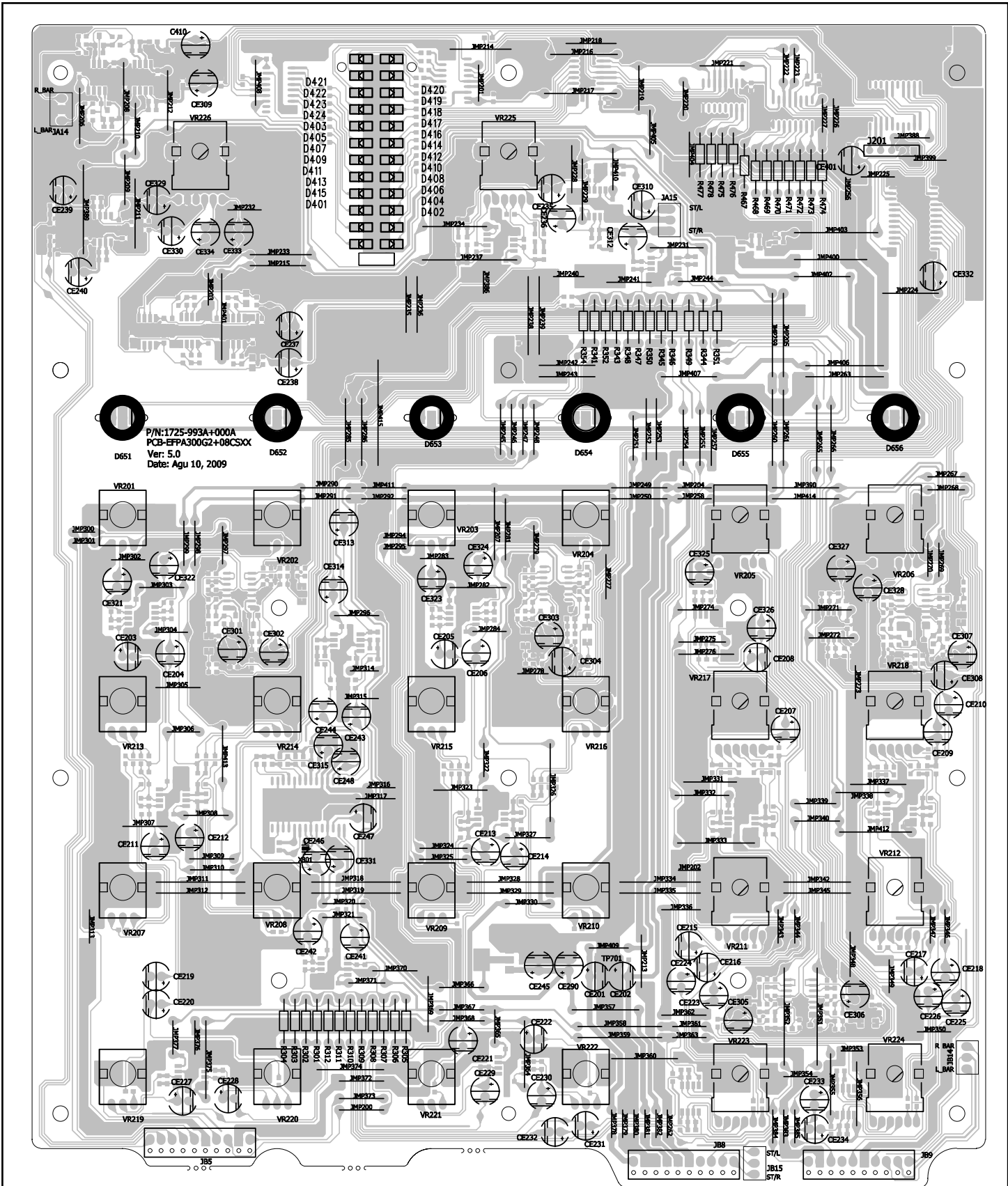
Fender PASSPORT
Mixer Schematic Diagram 5/7



Fender **PASSPORT**
Mixer Schematic Diagram 6/7

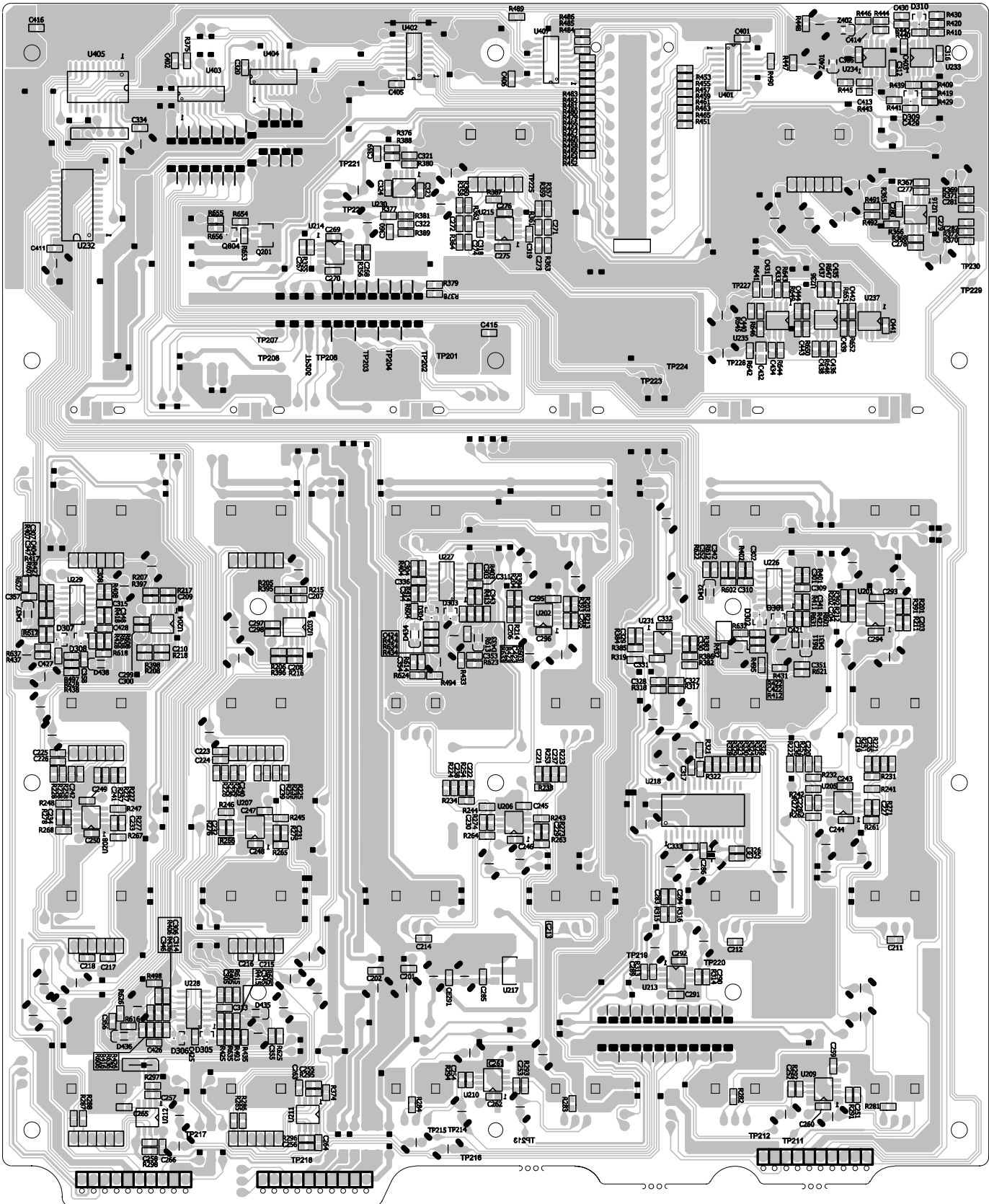


PASSPORT
 Mixer Schematic Diagram 7/7



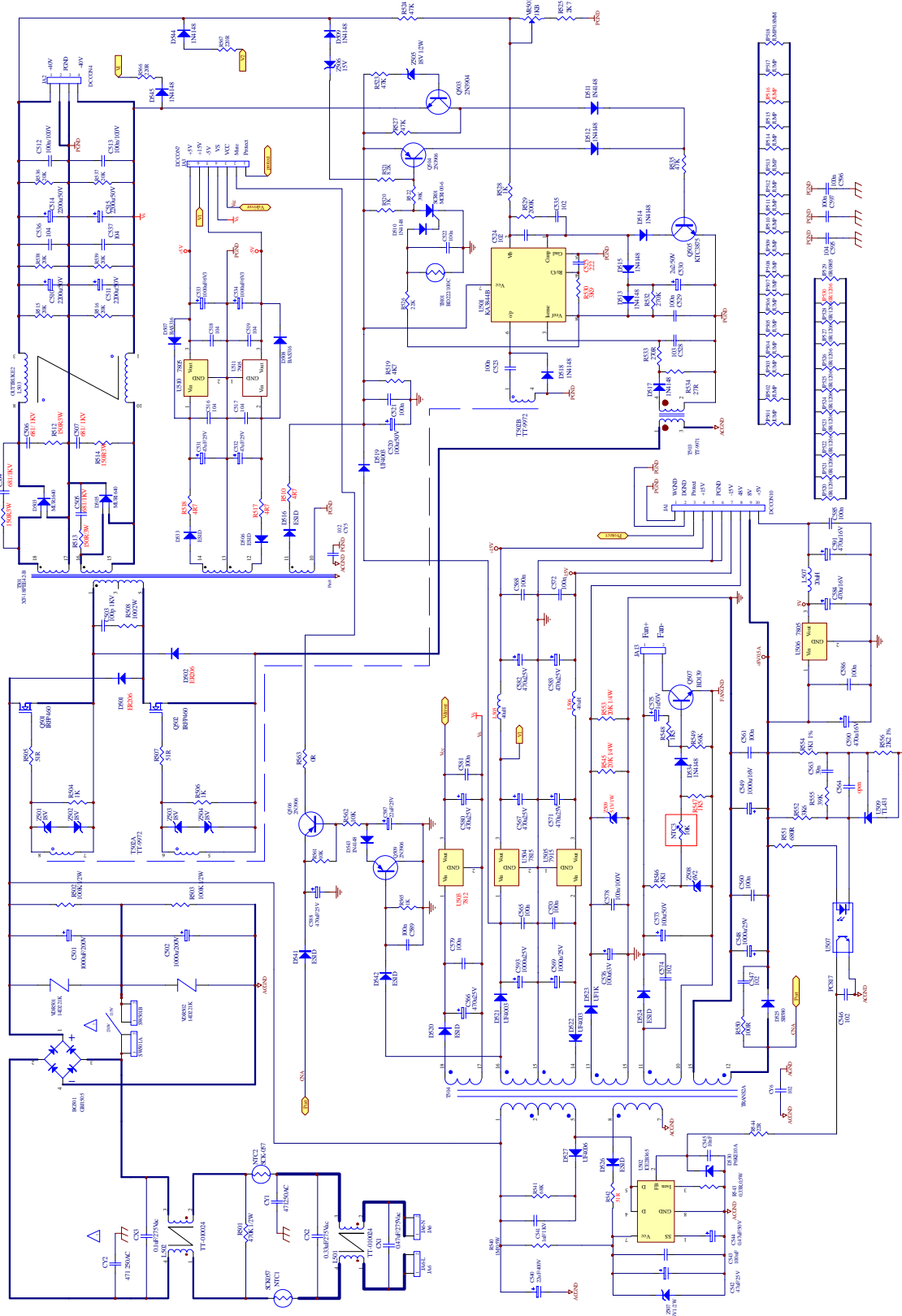
Mixer PCB top side

Fender **PASSPORT**
Mixer PCB



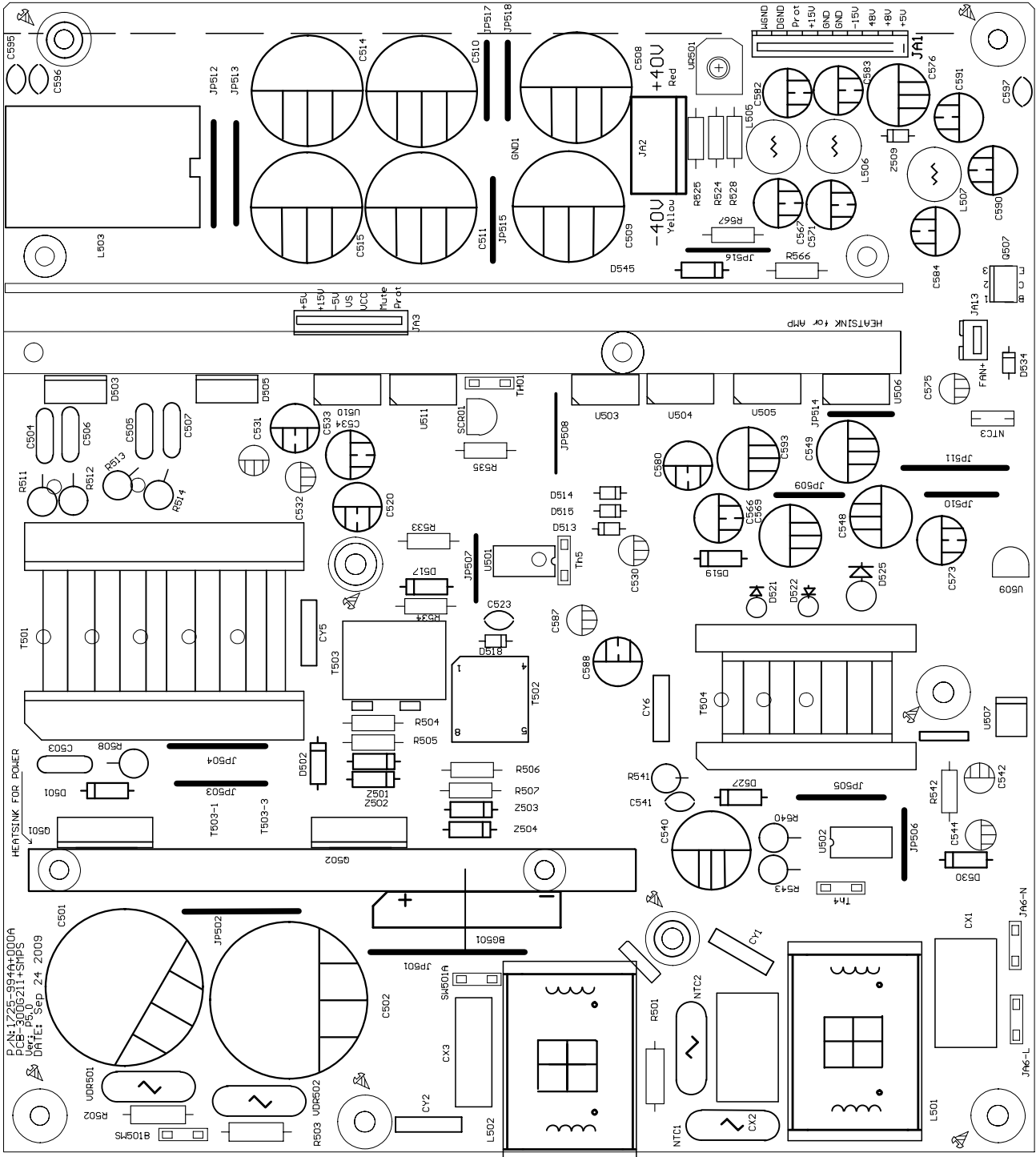
Mixer PCB bottom side

Fender **PASSPORT**
Mixer PCB



Fender PASSPORT

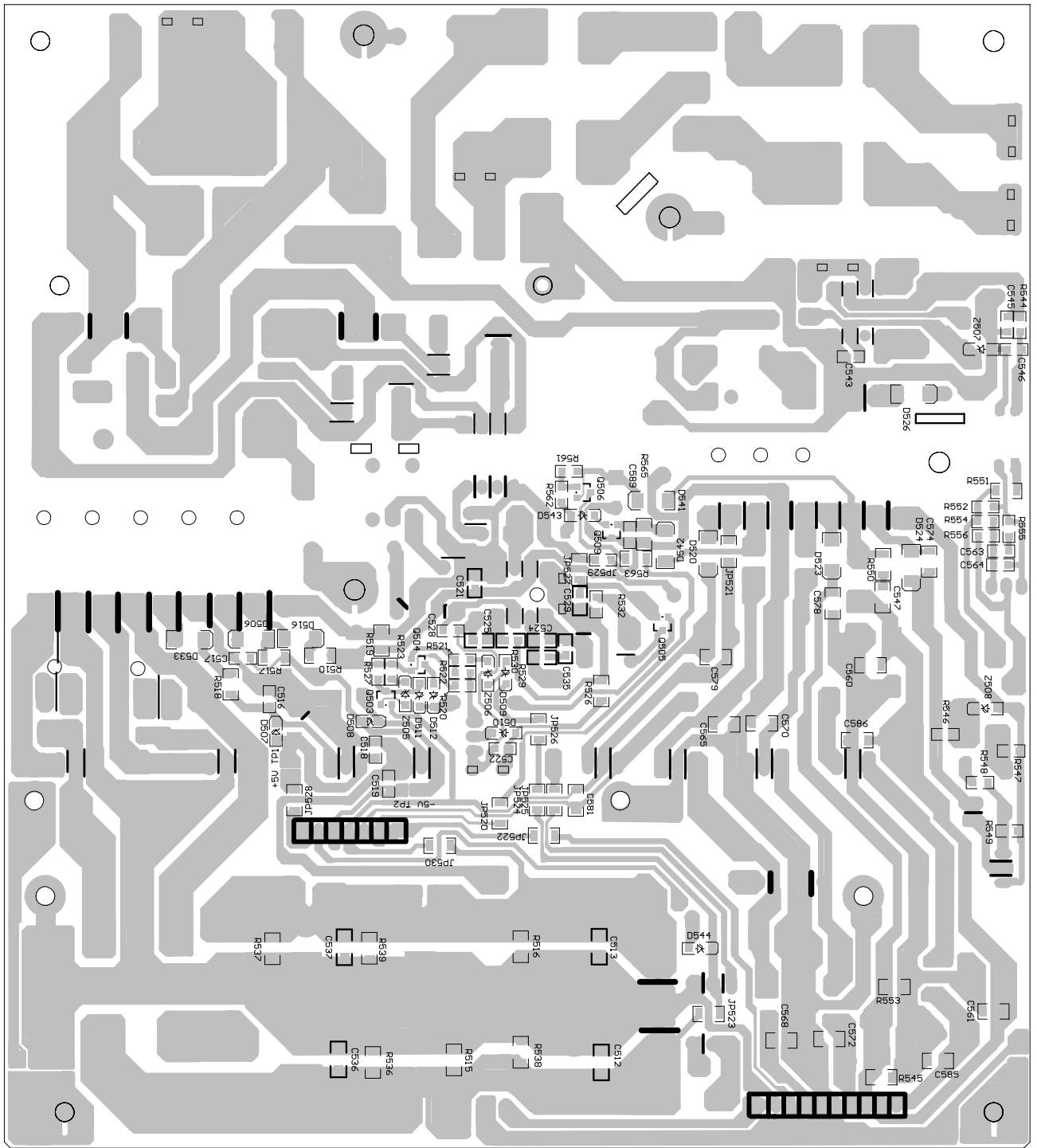
SMPS Schematic Diagram



P/N: 1725-994+00A
 Ver: R60211+SHPS
 DATE: Sep 24 2009

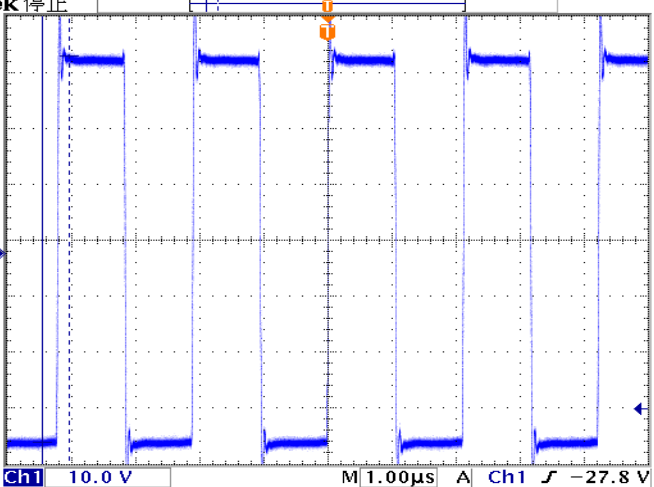
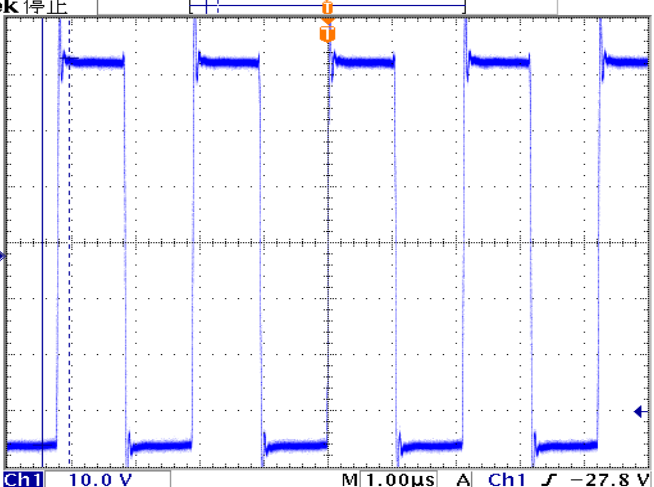
SMPS PCB top side



PASSPORT
 SMPS PCB



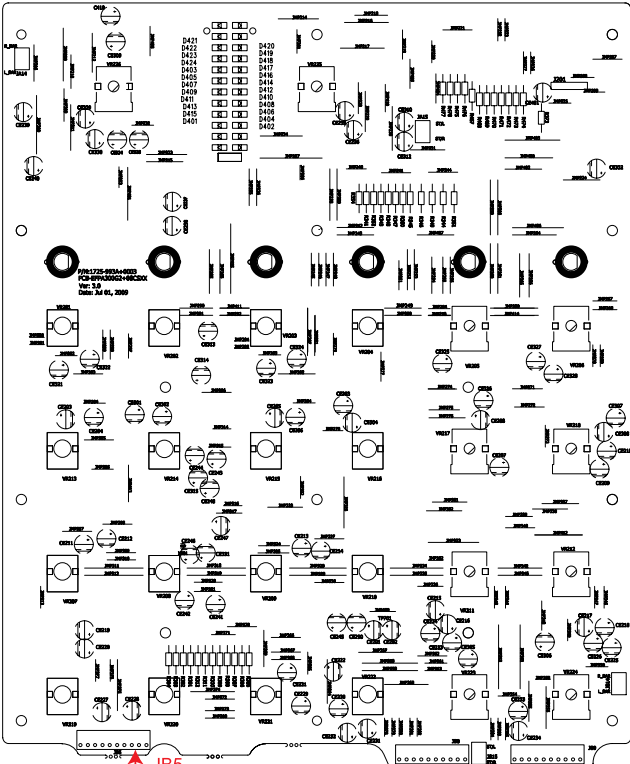
SMPS PCB bottom side

Fender **PASSPORT**
SMPS PCB

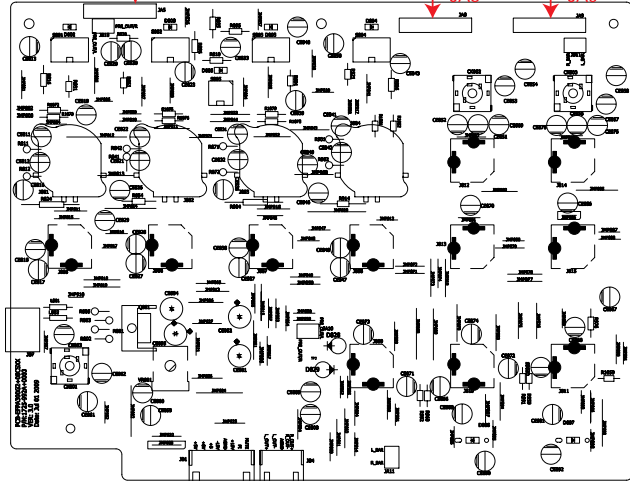
TP701	<p>PWM waveform: Tek 停止</p>  <p> Δ: 69.2 V $@$: -33.8 V Δ: 420ns $@$: -4.46μs Ch1 + 占空比 49.89 % Ch1 频率 473.4kHz Ch1 平均 269mV Ch1 10.0 V M 1.00μs A Ch1 \int -27.8 V 0.00000 s 27 8月 2008 13:46:36 </p>
TP702	<p>PWM waveform: Tek 停止</p>  <p> Δ: 69.2 V $@$: -33.8 V Δ: 420ns $@$: -4.46μs Ch1 + 占空比 49.89 % Ch1 频率 473.4kHz Ch1 平均 269mV Ch1 10.0 V M 1.00μs A Ch1 \int -27.8 V 0.00000 s 27 8月 2008 13:46:36 </p>
TP703	DC 40V
TP704	DC -40V


PASSPORT
Test Point Information

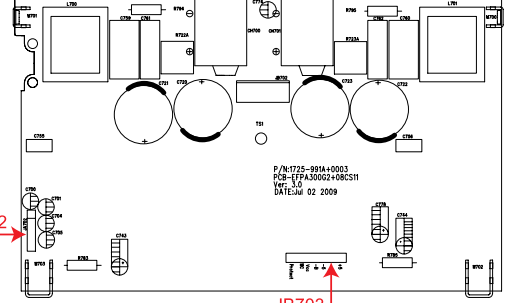
Mixer Board



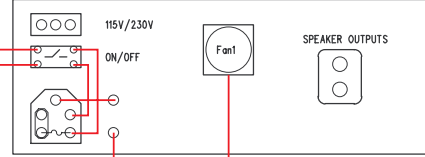
Input Board



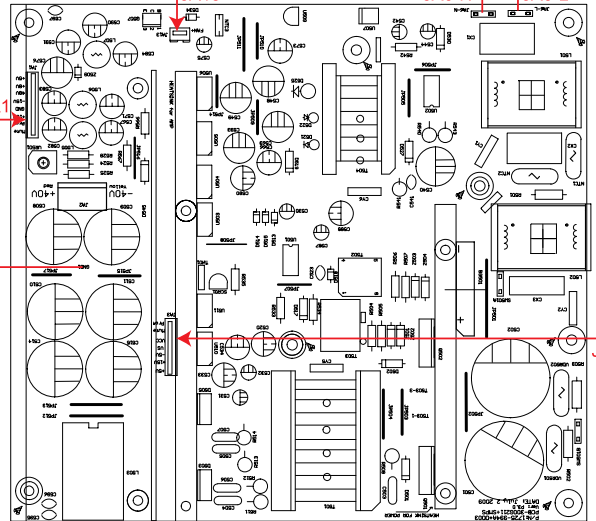
AMP Board



SMPS Box



SMPS Board



Fender **PASSPORT**
Wiring Diagram

The following shows the legend of the mating connections


SVC-300G211+INP			SVC-300G211+MIX		
JA5	1	CH-4	CH-4	1	JB5
	2	AGND	AGND	2	
	3	CH-3	CH-3	3	
	4	CH-2	CH-2	4	
	5	AGND	AGND	5	
	6	CH-1	CH-1	6	
	7	AGND	AGND	7	
	8	PRE_OUT/R	PRE_OUT/R	8	
	9	AGND	AGND	9	
	10	PRE_OUT/L	PRE_OUT/L	10	
SVC-300G211+INP			SVC-300G211+MIX		
JA8	1	ST/R	ST/R	1	JB8
	2	AGND	AGND	2	
	3	ST/L	ST/L	3	
	4	MUTE	MUTE	4	
	5	AGND	AGND	5	
	6	+5VD	+5VD	6	
	7	-15V	-15V	7	
	8	AGND	AGND	8	
	9	AGND	AGND	9	
	10	+15V	+15V	10	
SVC-300G211+INP			SVC-300G211+MIX		
JA9	1	L_BAR	L_BAR	1	JB9
	2	AGND	AGND	2	
	3	R_BAR	R_BAR	3	
	4	CH6-R	CH6-R	4	
	5	AGND	AGND	5	
	6	CH6-L	CH6-L	6	
	7	AGND	AGND	7	
	8	CH5-R	CH5-R	8	
	9	AGND	AGND	9	
	10	CH5-L	CH5-L	10	

Fender

PASSPORT

Wiring Diagram

SVC-300G211+INP			SVC-300G211+SMPS		
JB1	1	+5VD	+5V	8	JA1
	2	+8V	+8V	7	
	3	+B	+48V	6	
	4	.15V	-15V	5	
	5	AGND	PGND	4	
	6	+15V	+15V	3	
	7	PI	Protect	2	
	8	MUTE	Mute	1	
SVC-300G211+INP			SVC-300G211+AMP		
JB4	1	L_OUT+	L_OUT+	5	JA702
	2	L_OUT-	L_OUT-	4	
	3	AGND	AGND	3	
	4	R_OUT+	R_OUT+	2	
	5	R_OUT-	R_OUT-	1	
SVC-300G211+SMPS			SVC-300G211+AMP		
JA2	1	+40V	+40V	1	JB702
	2	PGND	PGND	2	
	3	PGND	PGND	3	
	4	.40V	.40V	4	
SVC-300G211+SMPS			SVC-300G211+AMP		
JA3	1	Protect	PROTECT		JB703
	2	Mute	MUTE_C		
	3	VCC	VCC		
	4	VS	.B		
	5	.5V	.5V		
	6	+15V	+15VPOP		
	7	+5V	+5V		


PASSPORT
 Wiring Diagram