



PASSPORT[®] PD-150

(This is the model name for warranty claims)

p/n 069-2005-003

SERVICE MANUAL



ATTENTION:

WARRANTY SERVICE PROCEDURES

Warranty field service of the Passport PD-150 will be to the Module or PCB Assy. level. Non-Warranty repairs of course can be to the component level at the Service Center's discretion. Please note for non-warranty repairs that all parts marked "REF" in the Parts List will need to be sourced from suppliers other than FMIC.



IMPORTANT NOTICE

• Copyright © 2007 FMIC. All rights reserved. All information contained herein is CONFIDENTIAL and PROPRIETARY and is the property of Fender® Musical Instruments Corporation. It is not to be sold or assigned to another party and is disclosed solely for use by Fender Authorized Service Centers for purposes of product service and maintenance. All information is not to be disclosed to others without the expressed permission of Fender® Musical Instruments Corporation. All

specifications are subject to change without notice. This information and any copies produced electronically or otherwise must be surrendered upon demand of Fender® Musical Instruments Corporation.

- Parts marked with two asterisks (**) indicate the required use of that specific part. This is necessary for RELIABILITY and SAFETY requirements. **DO NOT USE A SUBSTITUTE!**

PARTS LIST CODES

The description codes used in the itemized Parts Lists are defined below:

CAPACITOR CODES

CAP AE = Aluminum Electrolytic
CAP CA = Ceramic Axial
CAP CD = Ceramic Disk
CAP CR = Ceramic Radial
CAP MPF = Metalized Polyester Film
CAP MY = Mylar
CAP PFF = Polyester Film/Foil

RESISTOR CODES

RES CC = Carbon Comp
RES CF = Carbon Film
RES FP = Flame Proof
RES MF = Metal Film
RES MOX = Metal Oxide
RES WW = Wire Wound

HARDWARE CODES

BLX = Black Oxide
CR = Chrome Plated
HWH = Hex Washer Head
M = Machine Screw
NI = Nickel Plated
OHP = Oval Head Phillips
PB = Particle Board
PHP = Pan Head Phillips
PHPS = Pan Head Phillips Sems
SMA = Sheet Metal "A" Point
SMB = Sheet Metal "B" Point
SS = Stainless Steel
TF = Thread Forming
ZI = Zinc Plated



SPECIFICATIONS

Model Name:		PASSPORT PD-150
Release Number:		PR483
Part Number:	(120V, 60Hz) US:	069-2005-003
	(120V, 60 Hz) DS:	069-2005-903
	(240V, 50 Hz) AUS:	069-2005-033
	(230V, 50 Hz) UK:	069-2005-043
	(230V, 50 Hz) EUR:	069-2005-063
	(100V, 50 Hz) JPN:	069-2005-073
Frequency Response:		30 Hz to 20 kHz \pm 1 dB (at speaker output) 30 Hz to 20 kHz \pm 1 dB (at send output)
Distortion:		< 0.1%, 20 Hz to 20 kHz, 1dB below rated output
Signal to Noise Ratio:		> 80 dB @ 1W, "A" WTD
Power Output:		75W/ch continuous average power, 8 Ω , both channels driven with THD <1%
Input Impedance:		
	(Channels 1, 2, 3 XLR and 1/4")	"Mic" switch position: 2 k Ω "Line" switch position: 66 k Ω
	(Phono and Stereo Channel 1/4")	78 k Ω
Max. Input Level:	Mic:	-7 dBu
	Line:	30 dBu
	Stereo:	26 dBu
Return Input Impedance:		47k Ω
Fuse type:		T4AH, 250V
Passport System:	Width:	610 mm (24 in.)
	Height:	541 mm (18 in.)
	Depth:	254 mm (10 in.)
	Weight:	15.91 kgs (35 lbs)
Speakers:	Width:	245 mm (9.65 in.)
	Height:	439 mm (17.5 in.)
	Depth:	241 mm (9.5 in.)
	Weight:	4.08 kgs (9.0 lbs)
Power Tower:	Width:	254 mm (10 in.)
	Height:	451 mm (18 in.)
	Depth:	178 mm (7 in.)
	Weight:	6.80 kgs (15.00 lbs)
Tower Footprint:		241 x 298 mm (9.5 x 11.75 in.)
Microphone:		Dynamic Cardioid, balanced
Microphone Cable:		XL -Male to XL-Female, 6 m (20 feet)
Speaker Cables:		1/4 in. to 1/4 in., 9 m (30 feet)

0 dBu is referenced to 0.775 volts rms



Product specifications are subject to change without notice

SERVICE NOTES

The following describes the procedure to dismantle the PD-150 Cabinets.

STEP A: PD-150 CABINET

- A1. Unscrew two M4 machine screws on each of the left and right hatches on either side of the unit (8 total).
- A2. Unscrew two M3 pan-head machine screws on the handle cover and detach it.
- A3. Place the unit upside down. Unscrew eight M4 self-tapping screws off the foot standers.
- A4. Detach the foot standers. There are six M3 self-tapping screws in the middle portion.
- A5. Unscrew three M3 self-tapping screws located on the right-hand-side.
- A6. Place the unit in the normal position.
- A7. Locate the four M3 and two M4 self-tapping screws on the top and unscrew them.
- A8. Separate the left and right cabinets.
- A9. Locate the UHF and VHF antennas on the right and left cabinets respectively.
- A10. De-solder both antennas.
- A11. Unscrew three M3 self-tapping screws on left and right side panels (6 total) of the tower metal assembly.
- A12. Unscrew eight M2.6 and eight M3 self-tapping screws (three on top of front panel, three on top of rear panel, and two on metal cover).
- A13. Detach the left and right metal side panels.
- A14. Detach the top metal cover.
- A16. Unscrew seven outer M3 self-tapping screws on the rear panel.
- A17. Detach all connectors.
- A18. The procedure is completed.

STEP B: PD150 MIXER PCB

- B1. Detach 24 knobs and their nuts.
- B2. Detach the Reverb PCB assembly.

- B3. Unscrew nine M3 machine screws from the mixer PCB assembly.
- B4. Detach all connectors.
- B5. The procedure is completed.

STEP C: PD150 DSP REVERB PCB

- C1. Detach all connectors.
- C2. The procedure is completed.

STEP D: PD150 INPUT PCB

- D1. Unscrew six screws and nuts from the front panel.
- D2. Detach all connectors.
- D3. The procedure is completed.

STEP E: PD150 POWER AMP PCB

- E1. Unscrew four screws connecting the heat sink to the side brackets (two on either side of tower).
- E2. Detach all connectors.
- E3. The procedure is completed.

STEP F: PD150 SMPS PCB

- F1. Unscrew three screws from the front panel.
- F2. Detach all wiring and connectors.
- F3. Unscrew six screws from the top cabinet of the SMPS.
- F4. Unscrew three screws from the bottom cabinets of the SMPS.
- F5. Detach the spacer from the wiring of the SMPS.
- F6. Unscrew the earthing M4 nut.
- F7. Detach the mains connector from the AC inlet.
- F8. Unscrew five screws from the SMPS PCB assembly.
- F9. The procedure is completed.



PCB EXCHANGE POLICY

Parts marked with a single asterisk (*) in the Part Lists are not field replaceable. If a failure due to one of these components is detected, please

contact the FMIC Customer Service Department to order the complete PCB Assembly.

CIRCUIT DESCRIPTION

This section provides concise information about new or unusual circuitry designs incorporated into this amplifier model. The purpose is to aid the service technician by providing insight into the design areas most likely to become obstacles in troubleshooting. Information is focused for its effective use while maintaining the security of Fender[®] proprietary information wherever possible.

The PD-150 consists of the following modules.

1. Mixer Section
2. Digital Reverb Section
3. Signal Processor Circuit and System EQ Circuit
4. Power Amplifier
5. Switch Mode Power Supply Unit (SMPSU)

The Mixer PCB module

The mixer section is mainly made up of operational amplifiers as gain stages and therefore a technical description will not be used here. Following is a basic circuit description to familiarize you with the layout of the circuit.

The Mic/Line section is made up of 3 microphone / line inputs each with a first stage preamplifier for balanced or unbalanced inputs (locate on the mixer board). Line inputs can operate as either balanced or unbalanced if TRS or TR 1/4" jacks are used respectively. Gain selection of 1dB/+30dB is made by switching a different value resistor in the input stage. At this point on channel one, the signal is picked off for the VIP control ducking circuit made up of U1B.

After the input stage there is one knob for contour control, followed by an auto-pad level control where the signal splits off into the rev/aux bus and main

signals. The main signals are then routed to a pan circuit. Here the main signal is split between the left and right channel signal bus. Channel three also has an additional input via a pair of RCA connectors where the signals are summed into mono which may be used as an auxiliary audio signal input.

The stereo mixer section consists of a stereo pair inputs with RCA and 1/4" stereo phone jack connections. This circuit consists of an auto-pad level control, low frequency and high frequency tone controls, Rev/Aux send control and balance control with signals feeding the left and right audio bus. The audio bus is connected to three FETs that perform ducking of the signals on the bus with the exception of channel one which is the drive circuit for the VIP ducking circuit. This function is provided by U1B. Bus signals are buffered by U8A/B and drive the tape output connections and drive the main left and right master level control circuitry made up of U9A/B. The Rev/Aux signals are buffered by U12B and feed the mono aux send output. Main left and right level controls are auto-pad configuration and drive the speaker EQ circuitry made up of U10A/B. Note: Channel 1 Mic/Line reverb function will be affected by VIP control making announcements on Channel 1 dry.

The mixer board also contains part of the signal processor circuit and the system EQ circuit for the power amplifier. These circuits are an integral part of the power amplifier and appear after the return signal path.

These circuits will all be discussed later in this document.



PASSPORT[®] PD-150

(This is the model name for warranty claims)

The DSP Reverb PCB Module

The DSP Reverb PCB module receives the input REV/AUX signals at pin 4 of connector CN401. The DSP Reverb's IC's consist of U404 (AL1101 ADC), U405 (AL1201 DAC), and U406 (AL3201B). The outputs from U405 are fed to U402B and then buffered by U402A before feeding back to pin 6 of CN 401.

Signal Processor & System EQ Circuit

The signal processor is partially located on the mixer board but is an integral part of the power amplifier section. The operation of this circuit is performed by filtering the signal from U11A/B which drives the bases of Q5 and Q7 to control the voltage level at FETs Q4 and Q6 respectively. This in turn changes the filter characteristics of circuits which at low levels boosts the low and high frequencies of the signal. At high signal levels with the gate voltages approaching or at 0v, the circuit lowers the boost of the low frequencies in response. This circuit is post aux return and therefore does not modify the response of the signal at the aux send outputs.

Power Amplifier PCB module

Note: In cases where the amplifier circuits are identical between the left and right channel, only components related to the left channel will be discussed for simplicity.

The first stage of the power amplifier is made up of op amp U201A that acts as the input buffer and muting circuit for minimization of turn on/off pops. Q202 in balance with the input resistors of this circuit are designed to provide a deep muting effect. This circuit will be called into action if the temperature of the heat sink also rises above 80 degrees Centigrade. (Typical HS temperature is around 50 for normal operation). The output of the first stage feed trimmer resistor TP201 which are part of the balanced input section of low noise op-amp U202A which sets the amplifier gain (factory set at approximately 30.5dB). The output of the second stage

directly drives the biased gates of lateral power FETs Q204 and Q205.

Speaker short circuit protection is provided by U203B. This is accomplished when the output is shorted to ground, the normal differential signal applied to U203B is absent at the negative terminal while at the same time, the second stage is now forced into open loop gain. The drive signal is integrated into C207 forcing a positive voltage at the output of U203 that pulls the gate of FET Q203 into conduction from its previous negative bias off point, nulling the output of U202A. With the output of U202A minimized the output current of the amplifier is minimized until the short is removed. At this time, C207 will discharge allowing normal operation of the amplifier. **Note:** Some small DC offset will be present when the amplifier is in the short circuit protect mode.

The power amplifier board also provides the $\pm 15v$ for the Mixer and DSP reverb boards as well as the supply for the SMPSU FAN and the LED PCB which indicated power and thermal protection modes. The power amplifier board is also connected to the GM type fuse holder and aux DC power input connector.

The SMPS PCB Module

This unit is not recommended to be serviced in the field except by replacing the complete module as a total assembly. The following information is provided to assist in the trouble shooting of the unit. Please note that the mains fuse must be replaced with exactly the same grade of fuse for safety regulations and to avoid risk of damage and potential fire hazard.

The mains input to the SMPSU allows for operation from 90-130V in 115V setting and 190-250V in the 230V setting. The output of the SMPSU is $\pm 42V$ DC for the main power supply rails of the power amplifier. The unit also has connectors for mains power input, mains power switch and chassis, earth and signal grounds.

Service Tip: You can connect to the aux DC input (with GM fuses installed) to test the output voltage



PASSPORT[®] PD-150

(This is the model name for warranty claims)

to the rails before you open the set for service to get an indication of a possible power supply fault as it is connected to the rail output. Do not short these terminals!

The SMPSU incorporates protection circuits other than the fuses including over current protection. All parts contained in the SMPSU should be considered to be safety parts and should be replaced with only exact where service can be provided by properly licensed and trained repair technicians. This includes the dust filter as well as it has a fire hazard rating. ***Please be aware that voltages contained in this module are deadly!!***

Service Notes on Changes and Upgrades

A 0.01uF mylar film capacitor has been added to the VIP ducking circuit to prevent a slight hum that may be heard as an artifact at the tail of the ducking action. This was mainly detected on UL voltage settings. This capacitor is added at the junction of R18 (1Mega ohm) and D16 and the Source (Ground) of FET Q3 (J112). This modification should be performed on individual units that are listed below by S/N. All other UL units have been modified by the factory.



.PARTS LIST: MIXER - PCB ASSEMBLY			
QTY	PART #	DESCRIPTION	REFERENCE DESIGNATION
	0070378000	*MIXER REPAIR MODULE	
1	REF	PCB ASSY MIXER	
6	REF	CC 50V 100P 10% RL 5X3	C3-4 C15-16 C26-27
18	REF	CC 50V 27P 10% RL 5X3	C9 C11 C21 C23 C32 C34 C37-38 C43 C46 C52 C57 C62 C69 C78-81
6	REF	CM 100V 0.001UF 10% RL 5x7.5	C20 C31 C41 C45 C83-84
1	REF	CM 100V 0.01UF 10% RL 6x7.5	C87
2	REF	CM 100V 0.1UF 10% RL 9x11 CENTRALAB	C85-86
3	REF	CM 100V 0.0015UF 10% RL 5X7.5	C7 C18 C29
3	REF	CM 100V 0.015UF 10% RL 6x9.5	C8 C19 C30
4	REF	CM 100V 0.0022U 10% 5x7.5	C63 C67 C70 C74
2	REF	CM 100V 0.022UF 10% RL	C42 C44
4	REF	CM 100V 0.0047UF 10% RL 5.3X7.5	C54-55 C59-60
2	REF	CE 25V 47U 20% RLR 5X11 ELNA	C47-48
11	REF	CE 50V 1U 20% RLR 5x11 ELNA	C6 C10 C22 C33 C35-36 C39-40 C65 C72 C82
6	REF	CE 50V 2.2uF 20% RL 5x11	C1-2 C13-14 C24-25
12	REF	CE 50V 0.47uF 20% RL 5x11	C5 C17 C28 C49-51 C53 C56 C58 C61 C68 C75
2	REF	CE 50V 4.7uF 20% RL 5x11	C66 C73
1	REF	CE 50V 4.7U 20% RLR 5x11 EL-NA/NCC/MATSUSHITA	C12
2	REF	CE 50V 47uF 20% RL 8x12	C76-77
2	REF	CE 50V 0.56U 20% RLR 5X11	C64 C71
1	REF	PCB MIX S/S CEM-1 PD150	
1	REF	WAFER JM24182-3P	CN8
5	0070067000	PJ6-09-5STEREO JACK W/O NUT 5P	PJ1-4 PJ6
2	0070068000	MONO JACK PJ6-09-3 W/O NUT DIAMOND	PJ5 PJ7
10	REF	IC TL072CP DUAL FET OP AMP TI	U2 U4-9 U10-12
2	REF	IC LM833N NS	U1 U3
1	REF	IC TL072CDR DUAL J-FET INPUT OP-AMP (SMD)	U13
4	REF	CS-0813 PCB SUPPORT	
12	REF	RCF 1/8W 10K 5% AT	R11 R63-66 R75 R80 R90-91 R129 R137-138
17	REF	RCF 1/8W 100K 5% AT	R20-21 R38-39 R58-59 R76 R79 R86-87 R92 R95 R97 R99 R122 R139 R145
9	REF	RCF 1/8W 1M 5% AT	R17-19 R108 R118 R132-135
3	REF	RCF 1/8W 110K 5% AT	R82 R84 R120
5	REF	RCF 1/8W 2.2M 5% AT	R16 R107 R109 R117 R119

* Non-serviceable part. Replace complete parent assembly. See PCB EXCHANGE POLICY section above.

shaded Unique Fender® part. Order directly from the FMIC Parts Department.

shaded + * Access to this part or assembly is controlled. Please contact the FMIC Customer Service Department.

** Safety Requirement part. Replacement must match Safety Agency...-Value, if specified -Type, if specified -Approval Mark(s) if on part.

shaded + ** Both a unique Fender® part and a Safety Requirement part as defined above.



PASSPORT® PD-150
 (This is the model name for warranty claims)

.PARTS LIST: MIXER - PCB ASSEMBLY			
QTY	PART #	DESCRIPTION	REFERENCE DESIGNATION
17	REF	RCF 1/4W 1K 5% ATS	R1-3 R6 R15 R25-27 R30 R43-46 R88-89 R147-148
2	REF	RCF 1/4W 11K 5% ATS	R131 R146
10	REF	RCF 1/4W 12K 5% ATS	R9 R14 R33 R37 R53 R57 R102 R105 R112 R116
8	REF	RCF 1/4W 27K 5% ATS	R67-74
2	REF	RCF 1/4W 3.3K 5% ATS	R104 R114
18.	REF	RCF 1/4W 33K 5% ATS	R4-5 R7-8 R28-29 R31-32 R49-52 R93-94 R96 R98 R143-144
14	REF	RCF 1/4W 39K 5% ATS	R10 R13 R34 R36 R54 R56 R100-101 R110-111 R123 R130 R141-142
4	REF	RCF 1/4W 470R 5% ATS	R22-24 R136
1	REF	RCF 1/4W 56K 5% ATS	R124
7	REF	RCF 1/4W 6.8K 5% ATS	R83 R85 R103 R106 R113 R115 R121
18	REF	RCF 1/4W 82K 5% ATS	R12 R35 R40-42 R47-48 R55 R60-62 R77-78 R81 R125-128
1	REF	RMF 2W 3.3R 5% ATS METAL OXIDE	R140
12	0070083000	VR RK14K1240 100KBx2 W/C.C (ALPS)	VR1 VR5-6 VR9-10 VR13 VR15-20
10	0070082000	VR RK14K1240 (100KBx2) ALPS	VR2-4 VR7-8 VR11-12 VR14 VR21-22
16	REF	DIODE 1N4148TA NS	D1-16
2	REF	TR FET J112	Q4 Q6
6	REF	TR FET J112-TR1-E3 RLT	Q1-3 Q8-10
2	REF	TR MPS A56 VCE 80V NS	Q5 Q7
1	REF	TR MPS A56 VCE 80V NS RL T	Q11
4	0070443000	SW-SLIDE 2P2T SS2214RG9 Y.S.C.	SW1-4
1	REF	CN ASSY UL1007 #26 L=80 15P F/M P2.5	CN1
1	REF	CN ASSY UL2547 #26 L=170 3P M/M P2.5	CN3
1	REF	CN ASSY UL2547 #26 L=210 3P M/M P2.5	CN4
1	REF	CN ASSY UL2547 #26 L=250 3P F/M P2.5	CN5

.PARTS LIST: RCA/XLR INPUT - PCB ASSEMBLY			
QTY	PART #	DESCRIPTION	REFERENCE DESIGNATION
1	0070450000	*PCB ASSY RCA	
1	REF	PCB RCA 2751-2 REV:E	
1	REF	WAFER 15P ST. P=2.5 COULOMB	CN1
1	0074657000	6P RCA JACK AU HSP-206V-03	RJ1
3	0070078000	MIC JACK SVP561P-R	MJ1-3

* Non-serviceable part. Replace complete parent assembly. See PCB EXCHANGE POLICY section above.

shaded Unique Fender® part. Order directly from the FMIC Parts Department.

shaded + * Access to this part or assembly is controlled. Please contact the FMIC Customer Service Department.

** Safety Requirement part. Replacement must match Safety Agency...-Value, if specified -Type, if specified -Approval Mark(s) if on part.

shaded + ** Both a unique Fender® part and a Safety Requirement part as defined above.



PASSPORT® PD-150
 (This is the model name for warranty claims)

.PARTS LIST: DSP REVERB - PCB ASSEMBLY			
QTY	PART #	DESCRIPTION	REFERENCE DESIGNATION
1	0070104000	*PCB ASSY DSP REVERB	
1	REF	*2P ST.WAFER P=2.5 COULOMB	CN403
19	REF	*CC 50V 0.1uF 10% 0805 1.2X2.0	C405-406 C412-419 C422-427 C431-432 C434
2	REF	*CC 50V 220pF 10% 0805 1.2x2.0	C407 C409
1	REF	*CC 50V 4700pF 10% 0805 1.2x2.0	C404
1	REF	*CC 50V 470pF 10% 0805 1.2X2.0	C408
7	REF	*CE 50V 10UF 20% RLT 5X11 SHOEI	C401-403 C410-411 C430 C433
1	REF	*CE 50V 1UF 20% RLT 5X11 SHOEI	C420
2	REF	*CE 50V 47UF 20% RLT 6.3X11 SHOEI	C428-429
1	REF	*CN ASSY UL1007 #26 L=180 2P F/M P2.5	CN402
1	REF	*IC AL1101G WAVEFRONT ADC	U404
1	REF	*IC AL1201G WAVEFRONT DAC	U405
1	REF	*IC AL3201BG WAVEFRONT DIGITAL REVERB	U406
1	REF	*IC L78L05ACZ ST	U407
3	REF	*IC NJM2068M-#ZZZB DUAL OP AMP	U401-403
1	REF	*JM24182-2P WAFER	CN402, C403
1	REF	*JM24182-6P WAFER	CN401
1	REF	*PCB DSP REVE D/S FR4 10Z REV: D EF-PAP150D+05CS21	
1	REF	*RMG 1/10W 100K 5% 0805	R401
8	REF	*RMG 1/10W 10K 5% 0805	R408 R410-411 R416 R418-421
1	REF	*RMG 1/10W 1K 5% 0805	R417
4	REF	*RMG 1/10W 2.2K 5% 0805	R402-405
3	REF	*RMG 1/10W 220R 5% 0805	R406-407 R413
2	REF	*RMG 1/10W 4.7K 5% 0805	R409 R412
1	REF	*RMG 1/10W 47K 5% 0805	R415
1	REF	*RMG 1/8W 10R 5% 1206	R414
1	REF	*X'TAL 12.288MHZ +/- 30PPM 49U	XL401

.PARTS LIST: LED INDICATORS - PCB ASSEMBLY			
QTY	PART #	DESCRIPTION	REFERENCE DESIGNATION
1	0074656000	*PCB ASSY LED	
1	REF	*PCB POWER AMP 2751-3/-6 REV:D	
1	REF	*LED RED/GREEN L-937EGW 3MM	LED201
1	REF	*CN ASSY UL1007 #26 L=220 2P F/M P2.5	CN205

* Non-serviceable part. Replace complete parent assembly. See PCB EXCHANGE POLICY section above.

shaded Unique Fender® part. Order directly from the FMIC Parts Department.

shaded + * Access to this part or assembly is controlled. Please contact the FMIC Customer Service Department.

** Safety Requirement part. Replacement must match Safety Agency...-Value, if specified -Type, if specified -Approval Mark(s) if on part.

shaded + ** Both a unique Fender® part and a Safety Requirement part as defined above.



PASSPORT® PD-150
 (This is the model name for warranty claims)

.PARTS LIST: SMPS- PCB ASSEMBLY			
QTY	PART #	DESCRIPTION	REFERENCE DESIGNATION
1	0070504000	*SMPSU REPAIR MODULE	
1	REF	PCB ASSY SMPS	
3	REF	CC 50V 0.1U 20% RLF	C310-311 C316
1	REF	CC 50V 470P 10% RL 5x3	C308
1	REF	CC 1KV 100PF 10% RL 7x4.5	C317
2	REF	CC 1KV 470PF 10% RL 7x4.5	C318-319
4	REF	**CC 400V 1000P 20% RL Y5 U 9.5X8 AH09E102MLO	C303-304 C326-327
1	REF	CM 100V 0.01UF 10% RL 6x7.5	C312
1	REF	CM 100V 0.0022U 10% 5x7.5	C314
2	REF	CM 100V 0.0047UF 10% RL 5.3X7.5	C313 C315
2	REF	**CM 280V 0.22UF 20% RL 26.5X16.5 METAL-LIZED	C301-302
1	REF	CE 25V 10uF 20% RL 5x11	C309
1	REF	CE 50V 1U 20% RL 5x11 ELNA	C323
1	REF	CE 50V 100uF 20% RL 8x12	C307
1	REF	PCB SMPS S/S CEM-1 PD150	
1	REF	**PWR TXFR ETD-39 KSF-1689 -00	T303
2	REF	**CHOKE-COMMON MODE 15MH 4A 180MOHM DIP	T305 T307
1	REF	TRB 12X6X4 TOROIDAL KS-8 51N-1	T302
1	REF	KS-1554-03 TOROIDAL T131 -26	L302
2	REF	FERRITE BEAD INDUCTOR BL01RN1A1F1J	FB301-302
1	REF	**ARRESTER 230V DC 5KA M2P -230L	G301
1	REF	**WAFER 2P P7.92 STRAIGHT	CN301
2	REF	WASHER SPRING M3X0.9X5.5 BZ	IRF840
2	REF	M3 NUT NI	IRF840
2	REF	SCREW BH M3X 14 MM BZ CROSS	IRF840
2	REF	SCREW B-TITE PH M3X 8 MM YZ CROSS W/ WASHER	FEP16GT
4	REF	MICA T-400 T03P 25X20M TO-3P	
1	REF	IC REGULATOR SMPS CONTROL KA3842B DIP-8	U301
2	REF	2688-15-0 TH/SW BKT	IRF840
2	REF	INSULATION BUSHING (115DEG.C.)	FEP16GT
3	REF	RCF 1/4W 1K 5% AT	R308 R313 R315
1	REF	RCF 1/4W 100K 5% AT	R304
1	REF	RCF 1/4W 1M 5% AT	R305
1	REF	RCF 1/4W 22K 5% AT	R307

* Non-serviceable part. Replace complete parent assembly. See PCB EXCHANGE POLICY section above.

shaded Unique Fender® part. Order directly from the FMIC Parts Department.

shaded + * Access to this part or assembly is controlled. Please contact the FMIC Customer Service Department.

** Safety Requirement part. Replacement must match Safety Agency...-Value, if specified -Type, if specified -Approval Mark(s) if on part.

shaded + ** Both a unique Fender® part and a Safety Requirement part as defined above.



PASSPORT® PD-150
 (This is the model name for warranty claims)

.PARTS LIST: SMPS- PCB ASSEMBLY			
QTY	PART #	DESCRIPTION	REFERENCE DESIGNATION
1	REF	RCF 1/4W 2.7K 5% AT	R325
1	REF	RCF 1/4W 3.9K 5% AT	R309
1	REF	RCF 1/4W 39K 5% AT	R321
2	REF	RCF 1/4W 470R 5% AT	R310 R322
2	REF	RCF 1/4W 47K 5% AT	R323-324
2	REF	RCF 1/4W 51R 5% AT	R312 R314
1	REF	RCF 1/4W 680R 5% AT	R306
2	REF	RCF 1/2W 100K 5% AT	R302-303
1	REF	RCF 1/2W 470K 5% AT	R301
1	REF	RMF 1/4W 220R 1% AT	R311
1	REF	RMF 1W 2K 5% ATS METAL OXIDE	R320
1	REF	RMF 2W 100R 5% ATS METAL OXIDE	R317
2	REF	RMF 2W 47R 5% ATS METAL OXIDE	R318-319
1	REF	RMF 3W 0.22R 5% ATS METAL OXIDE	R316
1	REF	SVR B1K H3 VZ067TL7B 6.3X 6.8 HDK	TP301
2	REF	DIODE FEP16GT-E3/45 (GI)	D308-309
1	REF	**DIODE KBU6J-E3/1 600V (GI)	D301
1	REF	DZ 1/2W 12V 5% TEMIC AT	Z305
4	REF	DZ 1/2W 18V TEMIC AT	Z301-304
3	REF	DIODE 1N4148TA NS	D303-305
1	REF	RECTIFIER UF4003-T GI AT	D302
2	REF	RECTIFIER UF4006-T GI AT	D306-307
1	REF	TR TL431CLP TI	U303
2	REF	**TR FET IRF840PBF IR	Q301-302
1	REF	**SW CB-SL1412 AM1BCEI AC SELECTOR	SW302
1	REF	**NTC THERMISTER SCK055 THINKING	NTC301
2	REF	TRA HEAT SINK 2751-8-0	
1	REF	CN ASSY UL1007 #20 L=120 BROWN W/T'ANL	JPW1
1	REF	CN ASSY UL1007 #20 L=120 RED W/T'NAL	JPW2
1	REF	**OPTOCOUPLER CNY17G-2 (TEMIC)	U302
2	REF	**E.CAP 330UF+-20% 200V 22x30 (ELNA)	C305-306
2	REF	CE 63V 20% 1000U RL16x30 NICHICON/16x25 PANASONIC	C320-321

* Non-serviceable part. Replace complete parent assembly. See PCB EXCHANGE POLICY section above.

shaded Unique Fender® part. Order directly from the FMIC Parts Department.

shaded + * Access to this part or assembly is controlled. Please contact the FMIC Customer Service Department.

** Safety Requirement part. Replacement must match Safety Agency...-Value, if specified -Type, if specified -Approval Mark(s) if on part.

shaded + ** Both a unique Fender® part and a Safety Requirement part as defined above.



PASSPORT® PD-150
 (This is the model name for warranty claims)

.PARTS LIST: POWER AMPLIFIER - PCB ASSEMBLY			
QTY	PART #	DESCRIPTION	REFERENCE DESIGNATION
1	0070526000	*PCB ASSY POWER AMP	
2	REF	CC 50V 0.1U 20% RLF	C224-225
2	REF	CC 50V 0.22UF 20% RLF MO NO	C206 C216
4	REF	CC 50V 47P 10% RL 5X3	C203 C205 C213 C215
2	REF	CM 100V 0.022UF 10% RL	C208 C218
2	REF	CM 100V 0.22UF 10% RL 11.5x13	C209 C219
2	REF	CE 16V 22uF 20% RL 5x11	C204 C214
7	REF	CE 25V 47U 20% RL 5X11 E LNA	C210-211 C220-223 C228
4	REF	CE 50V 1U 20% RL 5x11 EL NA	C202 C207 C212 C217
1	REF	CE 50V 2.2uF 20% RL 5x11	C201
2	REF	CE 100V 10uF 20% RL 6.5x11	C226-227
1	REF	**PCB POWER AMP 2751-3/-6 REV:D	
1	REF	JM2422-2M WAFER	CN201
2	REF	JM2422-4M WAFER	CN202-203
3	REF	JM24182-2P WAFER	CN6 CN204-205
1	REF	WAFER JM24182-3P	CN5
2	0070311000	MONO JACK PJ6-09-3 W/O NUT DIAMOND	PJ201-202
1	REF	IC TL072CP DUAL FET OP AMP TI	U201
2	REF	IC BA4560 ROHM	U202-203
2	REF	RCF 1/8W 10K 5% AT	R205 R227
4	REF	RCF 1/8W 100K 5% AT	R206 R219 R228 R242
4	REF	RCF 1/8W 1M 5% AT	R220-221 R243-244
1	REF	RCF 1/8W 2.2M 5% AT	R202
4	REF	RCF 1/8W 3.3M 5% AT	R222 R225 R245 R248
6	REF	RCF 1/8W 390R 5% AT	R207 R215-216 R229 R238-239
1	REF	RCF 1/4W 1K 5% ATS	R250
1	REF	RCF 1/4W 1.5K 5% ATS	R210 R212 R232 R234
4	REF	RCF 1/4W 15K 5% ATS	R214 R217 R237 R240
1	REF	RCF 1/4W 2K 5% ATS	R251
5	REF	RCF 1/4W 39K 5% ATS	R201 R203-204 R208 R230
2	REF	RCF 1/4W 390K 5% ATS	R223 R246
2	REF	RCF 1/4W 4.7K 5% ATS	R211 R233
2	REF	RCF 1/4W 56K 5% ATS	R218 R241
2	REF	RMF 1/8W 5.1K 1% AT	R209 R231
4	REF	RMF 2W 3.3K 5% ATS METAL OXIDE	R224 R226 R247 R249
3	REF	RMF 2W 3.3R 5% ATS METAL OXIDE	R213 R235-236
3	REF	RWR 5W 270R 5% AL	R252-254

* Non-serviceable part. Replace complete parent assembly. See PCB EXCHANGE POLICY section above.

shaded Unique Fender® part. Order directly from the FMIC Parts Department.

shaded + * Access to this part or assembly is controlled. Please contact the FMIC Customer Service Department.

** Safety Requirement part. Replacement must match Safety Agency...-Value, if specified -Type, if specified -Approval Mark(s) if on part.

shaded + ** Both a unique Fender® part and a Safety Requirement part as defined above.



PASSPORT® PD-150
 (This is the model name for warranty claims)

.PARTS LIST: POWER AMPLIFIER - PCB ASSEMBLY			
QTY	PART #	DESCRIPTION	REFERENCE DESIGNATION
2	REF	SVR B1K H3 VZ067TL7B 6.3X 6.8 HDK	TP201-202
4	REF	DZ 1/2W 15V 5% TEMIC AT	Z202-205
1	REF	DZ 1/2W 33V TEMIC AT	Z201
1	REF	DZ 1W 12V AT TEMIC	Z208
2	REF	DZ 1W 15V AT TEMIC	Z206-207
11	REF	DIODE 1N4148TA NS	D201-211
4	REF	TR FET J112	Q202-203 Q206-207
1	REF	TR MPSA06 VCE 80V NS	Q201
1	REF	**THERMAL SW 17AM203A5-4	TH201
1	REF	CN ASSY UL1007 #26 L=100 2P M P2.5	CN206

.PARTS LIST: WIRELESS REG - PCB ASSEMBLY			
QTY	PART #	DESCRIPTION	REFERENCE DESIGNATION
1	0070376000	*PCB ASSY REG	
1	REF	CC 50V 0.1U 20% RLF	C601
1	REF	CE 50V 1U 20% RL 5x11 ELNA	C602
1	REF	PCB REG 2751-6	PCB-6
2	REF	JM24182-2P WAFER	CN601-602
1	REF	IC LM317HVT/NOPB REGULATOR	U601
1	REF	RMF 1/4W 1.3K 1% AT	R601
1	REF	RMF 1/4W 240R 1% AT	R602
1	REF	WIRE-CONN 2P P2.5 #26 UL1007 L=200 BK/RD F	

.PARTS LIST: PACKING MATERIALS			
QTY	PART #	DESCRIPTION	REFERENCE DESIGNATION
1	REF	GIFT BOX PD150	PACKING
2	REF	CARTON BOARD 2751-P7-0	
2	REF	INNER PAD 2751-P1-B	
4	REF	INNER PAD 2751-P14-0	
1	REF	CARTON-OUTER 700X520X285 B-B EF-PAPD150+05CS17	
1	REF	CARTON SHEET 1100x2200MM 1-PLY	PACKING
2	REF	INNER PAD 480X230X3 A-A EF-PAPD150+05CS17	
1	REF	PE FOAM 2751-P5-0	
2	REF	PE FOAM 2751-P4-0	
1	REF	PE FOAM 2751-P6-0	

* Non-serviceable part. Replace complete parent assembly. See PCB EXCHANGE POLICY section above.

shaded Unique Fender® part. Order directly from the FMIC Parts Department.

shaded + * Access to this part or assembly is controlled. Please contact the FMIC Customer Service Department.

** Safety Requirement part. Replacement must match Safety Agency...-Value, if specified -Type, if specified -Approval Mark(s) if on part.

shaded + ** Both a unique Fender® part and a Safety Requirement part as defined above.



.PARTS LIST: PACKING MATERIALS			
QTY	PART #	DESCRIPTION	REFERENCE DESIGNATION
2	REF	PE FOAM-SIDE EFPAPD150+05CS17	
1	0699000000	MICROPHONE P51 FENDER	
1	REF	CLIP-MIC 2617A	
1	REF	LEATHER BAG 2617A	
2	0070587000	SPK CABLE MONO 90 ANGLE PLUG L=30FT	
1	REF	CABLE-RCA STEREO 2P L=610	
1	REF	**SJT #18 /3C 2M BLK POWER CORD 1-51-438	PACKING (UL)
1	REF	H05VV-F 0.75MM/3C 2M BLK VDE W 1-51-439	(CE)
1	0074365014	PASSPORT MICROPHONE CABLE	

.PARTS LIST: CASING MATERIALS			
QTY	PART #	DESCRIPTION	REFERENCE DESIGNATION
1	REF	HALO BUSHING 0813C	
4	REF	METAL WASHER M3X0.5X8MM BZ	PANEL/MTG.BK
3	REF	METAL WASHER M3X0.5X8MM BZ	PANEL/PARTIT
3	REF	METAL WASHER M3X0.5X8MM BZ	PANEL/SMPS
2	REF	WASHER SPRING M3X0.9X5.5 BZ	FUSE COVER
6	REF	WASHER SPRING M3X0.9X5.5 BZ	REAR PANEL
2	REF	SCREW FLAT-CS M3X 5 MM B Z CROSS	HANDLE COVER
2	REF	ME 4*16 6.8MM BK/RH JH1303-01	HANDLE/CONSO
2	REF	SCREW TAP-BT BH M2.6X 6 MM BZ CROSS	DOOR
8	REF	TTS SCREW M2.6x8 BH BZ	
2	REF	SCREW D3X6 S-TITE BH,BK	FUSE COVER
3	REF	SCREW D3X6 S-TITE BH,BK	PANEL/SMPS
6	REF	SCREW D3X6 S-TITE BH,BK	REAR PANEL
3	REF	SCREW D3X6 S-TITE BH,BK	SIDE PLATE-A
3	REF	SCREW D3X6 S-TITE BH,BK	SIDE PLATE-B
2	REF	S-TITE 3X8 (BLK)	HINGE
4	REF	S-TITE 3X8 (BLK)	PANEL/MTG.BK
3	REF	S-TITE 3X8 (BLK)	PANEL/PARTIT
2	REF	SCREW B-TITE BIND HEAD M3X8 CROSS-RECESS BZ	PANEL/PARTIT
4	REF	B-TITE 3X10MM (BLK.ZN)	HANDLE BKT
8	REF	SCREW TAP-C2 BH M4X 10 M M BZ CROSS	FOOT STAND
6	REF	SCREW B-TITE BIND M4X14 CS-RECESS BZ	SUPPORT RIB
1	REF	COVER-TOP EFPAPD150+05CS17	

* Non-serviceable part. Replace complete parent assembly. See PCB EXCHANGE POLICY section above.

shaded Unique Fender® part. Order directly from the FMIC Parts Department.

shaded + * Access to this part or assembly is controlled. Please contact the FMIC Customer Service Department.

** Safety Requirement part. Replacement must match Safety Agency...-Value, if specified -Type, if specified -Approval Mark(s) if on part.

shaded + ** Both a unique Fender® part and a Safety Requirement part as defined above.



PASSPORT® PD-150
 (This is the model name for warranty claims)

.PARTS LIST: CASING MATERIALS			
QTY	PART #	DESCRIPTION	REFERENCE DESIGNATION
1	REF	PANEL-REAR SECC EFPAP150D+05CS11	
1	REF	PLATE-SIDE EFPAPD150+05CS17	
1	REF	SIDE PLATE-B 4132-4881-1	
1	REF	BKT-SOCKET 4132-4891-0 P150	
2	REF	HANDLE BKT 4132-4901-1 P150	
1	REF	COMPRESSION SPRING 2751-6-0	
1	REF	COVER-10P SK 4132-5131-0	CN606
1	0070568000	COVER-HANDLE TOP EF010C	
2	REF	CONSOLE MAIN EF010C	
2	REF	FOOT STAND BOTTOM EF010C	
1	REF	SUPPORT RIB BOTTOM EF010C	
1	0070570000	DOOR 1464-3700-1 P150	
1	0070571000	LOCKER-DOOR 1464-3800-0 P150	
2	REF	HINGE 1464-4200-0 P150	
2	REF	BADGE-SPRUE CAP EFPAPD150+05CS17	
1	REF	GASKET HANDLE PD150	
1	REF	GASKET TOP PD150	
1	REF	GASKET BOTTOM PD150	
1	REF	BADGE EFPAP150D+05CS11	CONSOLE
1	REF	WIRE-CONN 2P #20 UL1007 L=70 RING-TERMINAL	

.PARTS LIST: LATCH LOCKER CASING MATERIALS			
QTY	PART #	DESCRIPTION	REFERENCE DESIGNATION
8	REF	WASHER METAL M4X0.8X10 BZ	
8	REF	SPRING WASHER M4X0.8X6.5 MM BZ	
8	REF	SCREW S-TITE 4X16 PH BLK ZINC	
8	REF	C-PIN 4132-4691-0 P-150	
4	REF	LATCH BKT 4132-4681-0 P-150	
4	REF	TORSION SPRING-LATCH 2751-5-0	
4	0070564000	LATCH 1464-3500-0 P150	
4	REF	LOCKER-LATCH 1464-3600-1 P150	

.PARTS LIST: MIXER CASING MATERIALS			
QTY	PART #	DESCRIPTION	REFERENCE DESIGNATION
8	REF	WASHER METAL M3X0.3X4 WZ	MIX/RCA

* Non-serviceable part. Replace complete parent assembly. See PCB EXCHANGE POLICY section above.

shaded Unique Fender® part. Order directly from the FMIC Parts Department.

shaded + * Access to this part or assembly is controlled. Please contact the FMIC Customer Service Department.

** Safety Requirement part. Replacement must match Safety Agency...-Value, if specified -Type, if specified -Approval Mark(s) if on part.

shaded + ** Both a unique Fender® part and a Safety Requirement part as defined above.



PASSPORT® PD-150
 (This is the model name for warranty claims)

.PARTS LIST: MIXER CASING MATERIALS			
QTY	PART #	DESCRIPTION	REFERENCE DESIGNATION
2	REF	FIBRE WASHER M3X0.8X8MM	MIXER PCB
6	REF	S-TITE 3X8 (BLK)	MIC JACK
1	REF	SCREW B-TITE BIND HEAD M3X8 CROSS-RECESS BZ	LED PCB
8	REF	SCREW B-TITE BIND HEAD M3X8 CROSS-RECESS BZ	MIXER PCB
2	REF	SCREW B-TITE BIND HEAD M3X8 CROSS-RECESS BZ	RCA JACK
4	REF	SCREW B-TITE BIND HEAD M3X8 CROSS-RECESS BZ	U-BAR
4	REF	SW COVER 2751-11-0	SW-SLIDE
1	REF	SHIELD PLATE 4132-4741-0 P150	
1	REF	MIC JACK BKT 2751-9-0	
7	REF	WASHER M13 4132-5041-0	PHONE JACK
7	REF	T-NUT M12 4132-5031-0	PHONE JACK
1	REF	FRONT PANEL	
2	0070536000	KNOB A 1463-8301-1 P150	KNOB MASTER
20	0070537000	KNOB B 1463-8401-1 P150	KNOB SMALL
2	REF	U-BAR	
1	REF	SHEET FRONT PD150	FRONT PANEL

.PARTS LIST: POWER AMP CASING MATERIALS			
QTY	PART #	DESCRIPTION	REFERENCE DESIGNATION
1	REF	SHIELD COVER CONNECTOR 26.4X49.3 SECC	
1	REF	CC 1KV 1000PF 10% RL Y5P 5X5	C229
1	REF	CC 1KV 1000PF 10% RL Y5P 5X5	C230
4	REF	METAL WASHER M3X0.5X8MM BZ	2SK1058/J162
1	REF	WASHER SPRING M3X0.9X5.5 BZ	HEAT SINK
6	REF	WASHER SPRING M3X0.9X5.5 BZ	REAR PANEL
2	REF	SCREW MACHINE PAN M3X10 CROSS-RECESS BZ	H.S/BRASS
2	REF	SCREW BH M3X 5 MM BZ CROSS	PCB/BRASS
2	REF	SCREW BH M3X 14 MM BZ CROSS	fuse cover
4	REF	SCREW TAP-BT BH M2.6X 6 MM BZ CROSS	FUSE HOLDER
6	REF	SCREW D3X6 S-TITE BH,BK	REAR PANEL
4	REF	SCREW B-TITE PH M3X 12 M M YZ CROSS W/WASHER	2SK1058/J162
4	REF	SCREW B-TITE PH M3X 12 M M YZ CROSS W/WASHER	MTG. BKT
1	REF	SCREW B-TITE PH M3X 12 M M YZ CROSS W/WASHER	TH/SW BKT

* Non-serviceable part. Replace complete parent assembly. See PCB EXCHANGE POLICY section above.

shaded Unique Fender® part. Order directly from the FMIC Parts Department.

shaded + * Access to this part or assembly is controlled. Please contact the FMIC Customer Service Department.

** Safety Requirement part. Replacement must match Safety Agency...-Value, if specified -Type, if specified -Approval Mark(s) if on part.

shaded + ** Both a unique Fender® part and a Safety Requirement part as defined above.



PASSPORT® PD-150
 (This is the model name for warranty claims)

.PARTS LIST: POWER AMP CASING MATERIALS			
QTY	PART #	DESCRIPTION	REFERENCE DESIGNATION
11	REF	SCREW B-TITE BIND HEAD M3X8 CROSS-RECESS BZ	HEAT SINK
4	REF	MICA T-400 T03P 25X20M TO-3P	2SK1058/J162
2	REF	ANTENNA WASHER	HEAT SINK
2	REF	2666-12 METAL WASHER M12 X0.5X16MM NI	PHONE JACK
2	REF	2666-11 HEXAGON NUT M12	PHONE JACK
1	REF	2688-15-0 TH/SW BKT	HEAT SINK
2	REF	MTG. BKT 4312-4711-0 P150	HEAT SINK
2	REF	BRASS TUBE 2751-10-0 L=9mm	PCB/H.S
2	REF	1800-FI GM FUSE HOLDER	
1	REF	TR FET 2SK1058-E HITACH IDS=7A	Q204
1	REF	TR FET 2SK1058-E HITACH IDS=7A	Q208
1	REF	TR FET 2SJ162-E HITACH IDS=7A	Q205
1	REF	TR FET 2SJ162-E HITACH IDS=7A	Q209
1	REF	HEAT SINK PD150 ROK	2SK1058/J16
1	REF	CN ASSY UL1007 PCE98-033 3 #18 L=90/150/170 4P	CN202

.PARTS LIST: REG CASING MATERIALS			
QTY	PART #	DESCRIPTION	REFERENCE DESIGNATION
1	REF	2617-12 REV:A WIRELESS PCB	
1	REF	T'NAL 2225A-20D 2x10 PIN NELTRON 3.96mm CARD EDGE	CN606
3	REF	METAL WASHER M3X0.5X8MM BZ	U601 PCB
3	REF	WASHER SPRING M3X0.9X5.5 YZ	U601 PCB
1	REF	M3 NUT NI	U601
2	REF	SCREW MACHINE PAN M3X12 CROSS-RECESS BZ	CN606
3	REF	SCREW M3X10 (BLK)	REG PCB
1	REF	MICA T-400 T03P 25X20M TO-3P	U601
2	REF	ANT WIRE 2751-13-0	CN603
1	REF	BUSHING TO-220A	U601
1	REF	SPONGE BAR 2751-12-0	CONSOLE
2	REF	RUBBER CABLE BUSHING BLK 6MM	SIDE PLATE-
1	REF	UL1533#26 G/B PCE99-0228 L=253MM 8 POS HOUSING	CN607A
1	REF	UL1533#26 G/B PCE99-0229 L=60MM 8 POS HOUSING	CN607B
1	REF	UL1007#26 R/B PCE99-0200 L=280MM 2 POS HOUSING	CN601

* Non-serviceable part. Replace complete parent assembly. See PCB EXCHANGE POLICY section above.

shaded Unique Fender® part. Order directly from the FMIC Parts Department.

shaded + * Access to this part or assembly is controlled. Please contact the FMIC Customer Service Department.

** Safety Requirement part. Replacement must match Safety Agency...-Value, if specified -Type, if specified -Approval Mark(s) if on part.

shaded + ** Both a unique Fender® part and a Safety Requirement part as defined above.



.PARTS LIST: SMPS CASING MATERIALS			
QTY	PART #	DESCRIPTION	REFERENCE DESIGNATION
1	REF	CHOKE EARTH 85UH 300V #16 WIRE GRE/YEL	L304
1	REF	FERRITE BEAD 26430000101 (FAIR-RITE)	FB303/Q301
1	REF	FERRITE BEAD 26430000101 (FAIR-RITE)	FB304/Q301
1	REF	FERRITE BEAD 26430000101 (FAIR-RITE)	FB305/Q302
1	REF	FERRITE BEAD 26430000101 (FAIR-RITE)	FB306/Q302
1	REF	FERRITE BEAD 26430000101 (FAIR-RITE)	FB307/D308
1	REF	FERRITE BEAD 26430000101 (FAIR-RITE)	FB308/D308
1	REF	FERRITE BEAD 26430000101 (FAIR-RITE)	FB309/D309
1	REF	FERRITE BEAD 26430000101 (FAIR-RITE)	FB310/D309
4	REF	METAL WASHER M3X0.5X8MM BZ	FAN
1	REF	WASHER METAL M4X0.8X10 BZ	SPACER
1	REF	WASHER INT-TOOTH M4X0.8X8.5 BZ	KS-966N-1
1	REF	WASHER INT-TOOTH M4X0.8X8.5 BZ	RING T'NAL
4	REF	WASHER SPRING M3X0.9X5.5 BZ	FAN
2	REF	WASHER SPRING M3X0.9X5.5 BZ	POWER INLET
1	REF	WASHER SPRING M4X1X7 NI	KS-966N-1
1	REF	WASHER SPRING M4X1X7 NI	RING T'NAL
2	REF	M3 NUT NI	POWER INLET
1	REF	NUT HEX M4	KS-966N-1
1	REF	NUT HEX M4	RING T'NAL
2	REF	SCREW MACHINE PAN M3X8 CROSS-RECESS BZ	AC SELECTO
2	REF	SCREW MACHINE PAN M3X8 CROSS-RECESS BZ	POWER INLET
5	REF	SCREW M3X10 W/S&F WASHER (BLK)	PCB
4	REF	SCREW M3X10 (BLK)	FAN
4	REF	SCREW D3X6 S-TITE BH,BK	TOP COVER
3	REF	SCREW B-TITE BIND M4X8 CROSS-RECESS BZ	SPACER
1	REF	ANTENNA WASHER	PCB/GND
1	REF	RING T'NAL 04RNB14-5	
1	REF	COVER-TOP POWER SUPPLY PD150 PLUS	
1	REF	BOTTOM COVER 4132-4732-0 P150	
1	REF	BUSHING OSB-10	
1	REF	SPACER SSRS4-5-01 P150	BOTTOM COVER
1	REF	**POWER INLET SOCKET SC9F-21	
2	0070483000	**FUSE S505-4A TIME DELAY 250V 5x20mm UL/CSA/SEMKO	POWER INLET
1	0070267000	**SWITCH ROCKER 2PIT	SW301
1	REF	CN ASSY UL1007 #18 L=280 2P F P3.96 11T	CN201

* Non-serviceable part. Replace complete parent assembly. See PCB EXCHANGE POLICY section above.

shaded Unique Fender® part. Order directly from the FMIC Parts Department.

shaded + * Access to this part or assembly is controlled. Please contact the FMIC Customer Service Department.

** Safety Requirement part. Replacement must match Safety Agency...-Value, if specified -Type, if specified -Approval Mark(s) if on part.

shaded + ** Both a unique Fender® part and a Safety Requirement part as defined above.



.PARTS LIST: <u>SMPS CASING MATERIALS</u>			
QTY	PART #	DESCRIPTION	REFERENCE DESIGNATION
1	REF	CN ASSY UL1007 #18 L=300 4P F P3.96 11T	CN203
1	REF	CN ASSY UL1007 #18 L=180 2P M P3.68 11T	CN7
1	REF	WIRE-CONN 3P P3.96 #18 UL1015 L=45 F/M	CN301
1	0070261000	**DC FAN CHA8012BS	

.PARTS LIST: <u>SPEAKER ASSY</u>			
QTY	PART #	DESCRIPTION	REFERENCE DESIGNATION
	0070376000	SPEAKER BOX QUICK REPAIR MODULE	
	REF	CE 100V 33u 20% AL 16X42 BI-POLAR BO3A(AXIAL)	
2	0070067000	REAR PHONE JACK 5 PIN	
2	REF	WASHER METAL M9X0.5X14 BZ	PHONE JACK
8	REF	SCREW BH M6X 25 MM BZ CROSS	
4	REF	SCREW B-TITE FLAT-CS M3X 10 CS-RECESS BZ	
24	REF	SCREW TAP-C2 BH M4X 10 MM BZ CROSS	
2	REF	SCREW B-TITE BIND M4X14 CS-RECESS BZ	
2	REF	QC ACC LABEL	SPK
2	0070552000	GRILLE 4132-4781-0 P150	
1	REF	O RING 4152-2091-0 NK110C	
2	REF	BADGE-SPRUE CAP EFPAPD150+05CS17	
2	REF	GASKET SPEAKER 2751-7-A L=1080mm	
2	REF	SPRUE CAP(RED)	
2	REF	SPEAKER BOX MAIN EF010C	SPK BOX
2	0070301000	STAND PLUG BOTTOM EF010C	BACK
2	REF	PLASTIC CABLE TIE 97MM	WIRE
2	REF	SPEAKER WIRE 200MM BLK-B LK-RED 1-50-276	SPK
4	0070370000	PD150 2.75 INCH TWEETER	
2	0070371000	PD150 WOOFER	

* Non-serviceable part. Replace complete parent assembly. See PCB EXCHANGE POLICY section above.

shaded Unique Fender® part. Order directly from the FMIC Parts Department.

shaded + * Access to this part or assembly is controlled. Please contact the FMIC Customer Service Department.

** Safety Requirement part. Replacement must match Safety Agency...-Value, if specified -Type, if specified -Approval Mark(s) if on part.

shaded + ** Both a unique Fender® part and a Safety Requirement part as defined above.

**PASSPORT® PD-150**

(This is the model name for warranty claims)

.PARTS LIST: MISCELLANEOUS MATERIALS			
QTY	PART #	DESCRIPTION	REFERENCE DESIGNATION
1	0070377000	TOWER SIDE CABINETS A, PD150	
1	0070377000	TOWER SIDE CABINETS B, PD150	
1	0070315000	GP UL/IEC POWER CORD (UL/CSA VER) NORTH AMERICA, TAIWAN	
1	0070316000	GP CE/IEC POWER CORD (EURO VER) CONT.EUR/ASIA EXPT HK, CHINA, AUSTRALIA, JAPAN	
1	0070317000	GP BS/IEC POWER CORD (UK/HK) UK, HK	
1	0070318000	GP CCEE POWER CORD (CHINA) GREAT WALL STD.	
1	0070319000	GP SAA/IEC POWER CORD (AUST/NZ) AUS- TRALIA/NEW ZEALAND	
1	0070320000	GP JIS/IEC POWER CORD W/ GND PIN JAPAN	

* Non-serviceable part. Replace complete parent assembly. See PCB EXCHANGE POLICY section above.

shaded Unique Fender® part. Order directly from the FMIC Parts Department.

shaded + * Access to this part or assembly is controlled. Please contact the FMIC Customer Service Department.

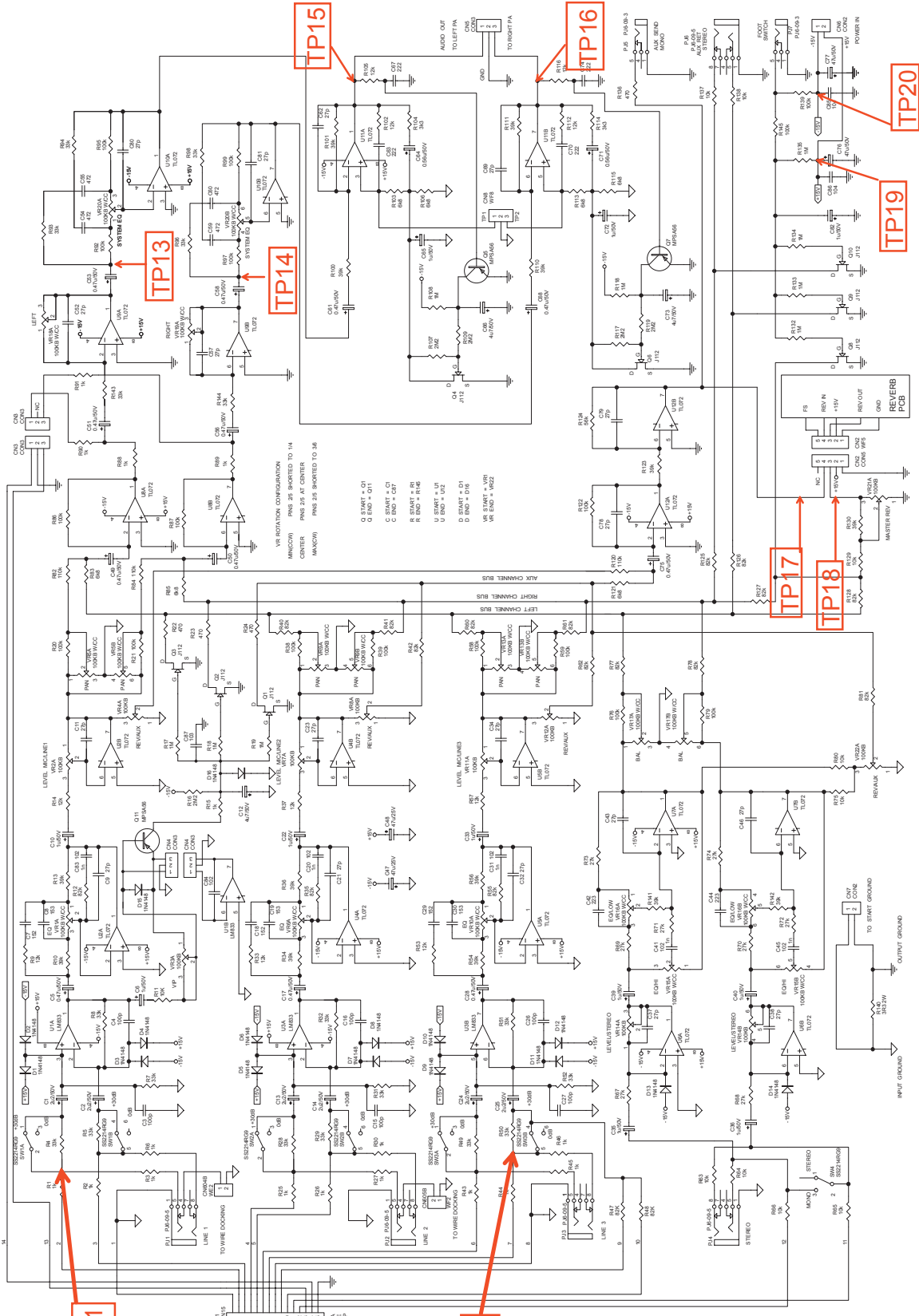
** Safety Requirement part. Replacement must match Safety Agency...-Value, if specified -Type, if specified -Approval Mark(s) if on part.

shaded + ** Both a unique Fender® part and a Safety Requirement part as defined above.



Service Diagram List

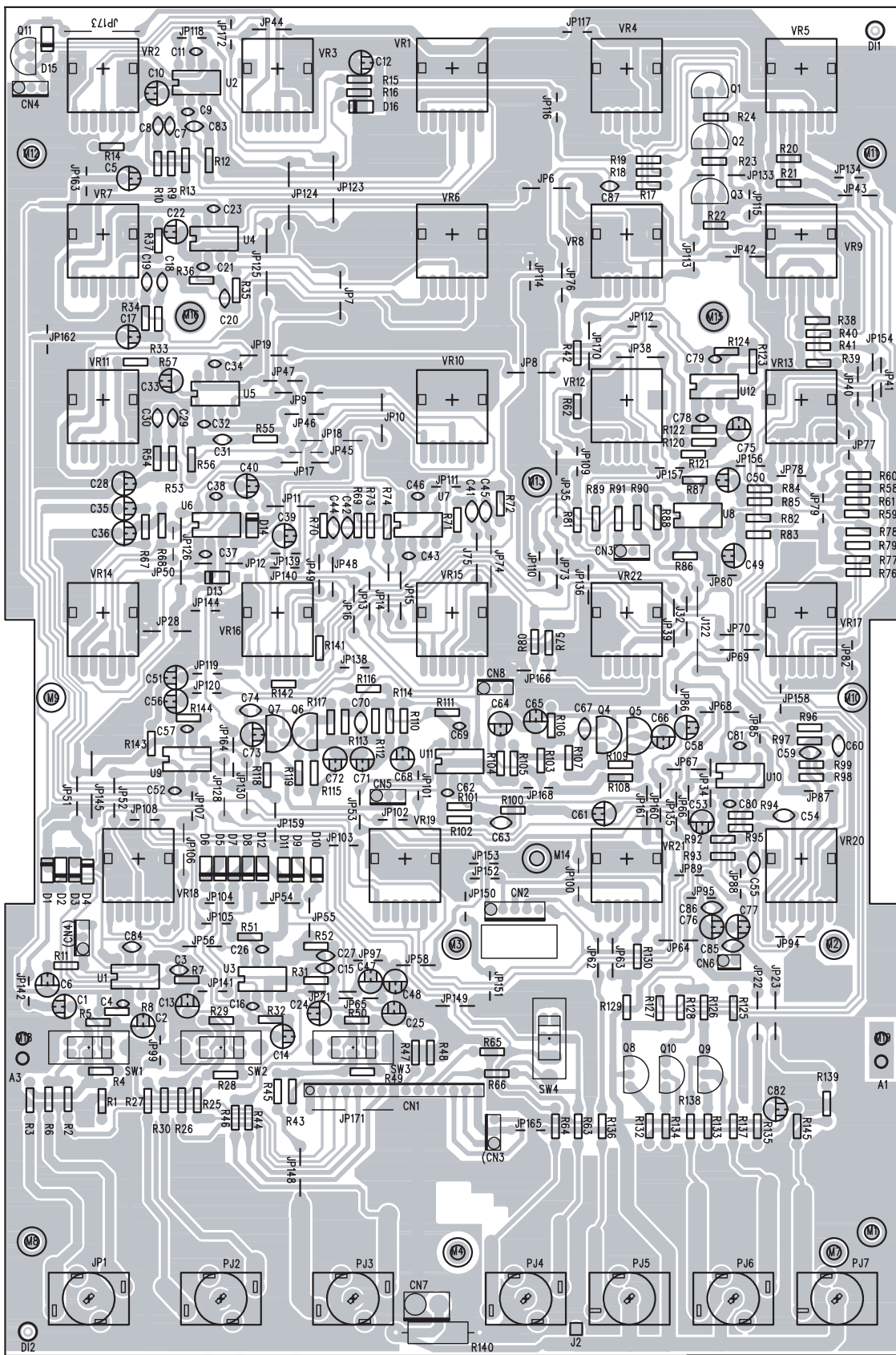
Service Diagram (Schematic)	MIXER
Service Diagram (PCB Assembly)	MIXER PCB
Service Diagram (Schematic)	RCA/XLR INPUT
Service Diagram (PCB Assembly)	RCA/XLR INPUT PCB
Service Diagram (Schematic)	DSP REVERB
Service Diagram (PCB Assembly)	DSP REVERB/ LED PCB
Service Diagram (Schematic)	SMPS
Service Diagram (PCB Assembly)	SMPS PCB
Service Diagram (Schematic)	POWER AMPLIFIER
Service Diagram (PCB Assembly)	POWER AMPLIFIER PCB
Service Diagram (Test Point Information)	TP1-TP24
Service Diagram (Block Diagram)	WIRING DIAGRAM
Service Diagram (Exploded View)	MAIN UNIT ASSY
Service Diagram (Exploded View)	MIXER ASSY
Service Diagram (Exploded View)	LATCH ASSY
Service Diagram (Exploded View)	SPEAKER ASSY
Service Diagram (Exploded View)	TOWER HOUSING ASSY
Service Diagram (Exploded View)	PACKING ASSY



VR ROTATION CONFIGURATION
 MIN(CW) PINS 25 SHORTED TO 14
 CENTER PINS 25 AT CENTER
 MAX(CW) PINS 25 SHORTED TO 36

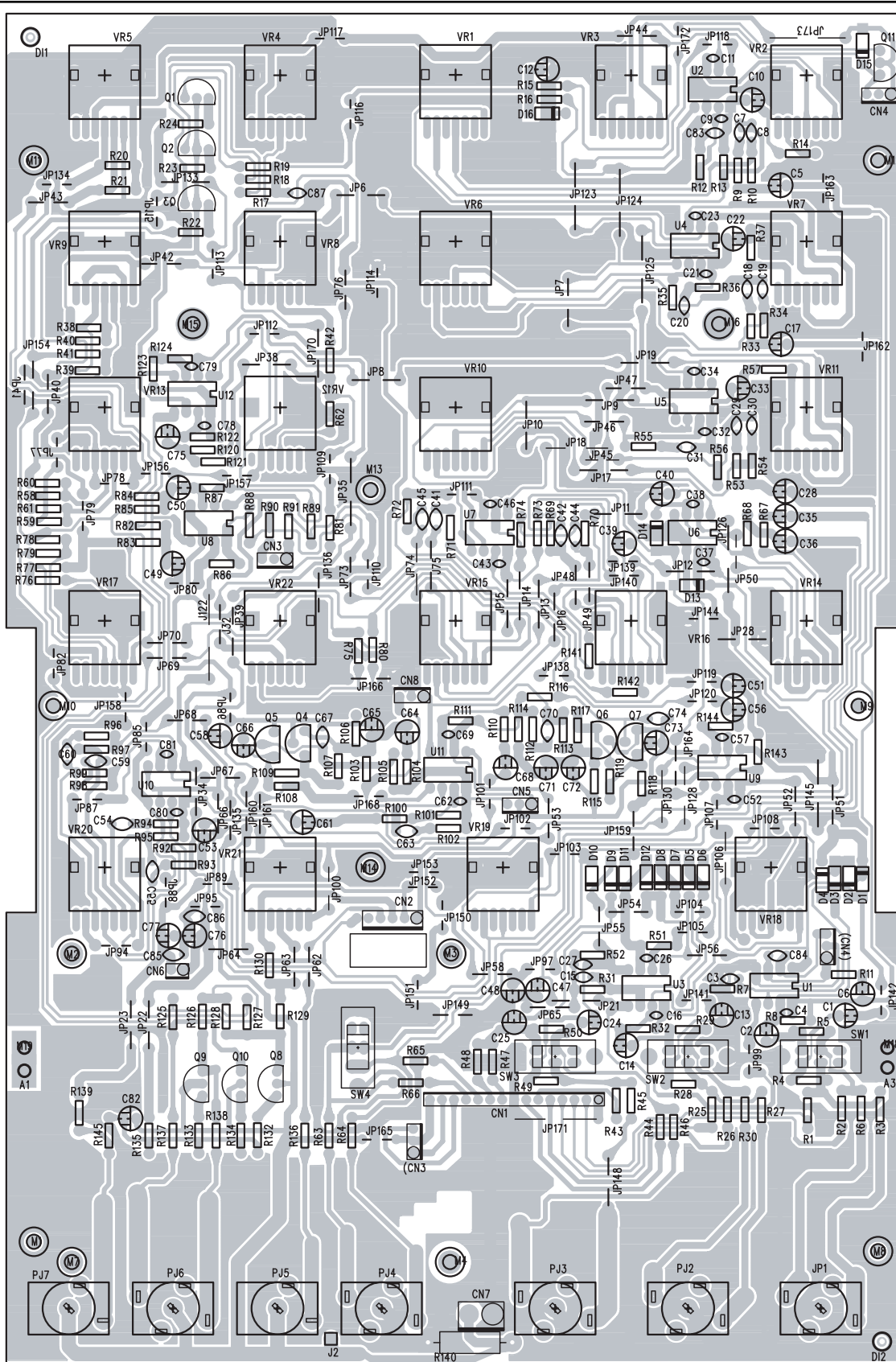
Q START = Q1
 Q END = Q1
 C START = C1
 C END = C1
 R START = R1
 R END = R4
 U START = U1
 U END = U2
 D START = D1
 D END = D1
 VR START = VR1
 VR END = W22

Fender **PASSPORT**
 Mixer Schematic Diagram



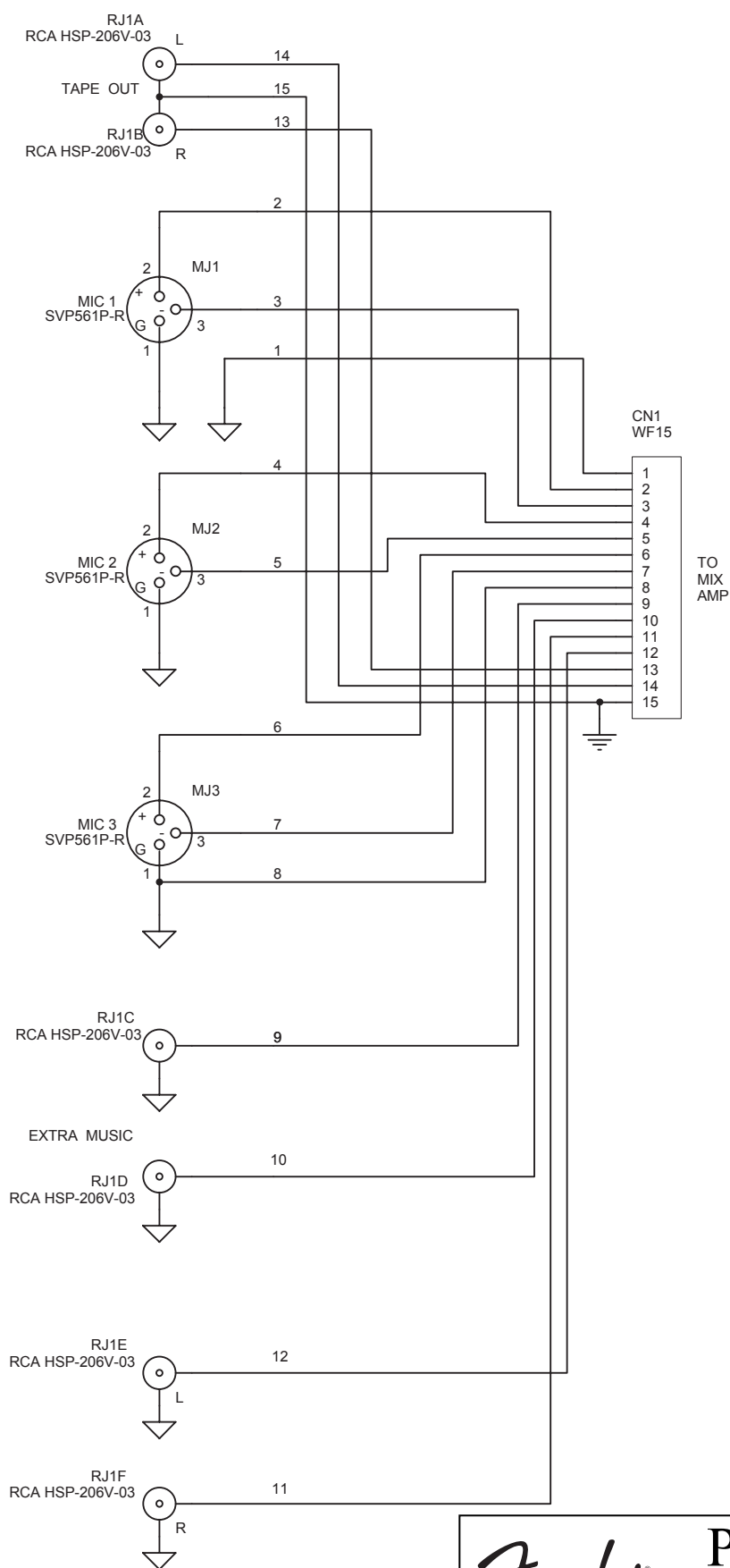
Mixer Section PCB Component Side

Fender **PASSPORT**
Mixer Section PCB

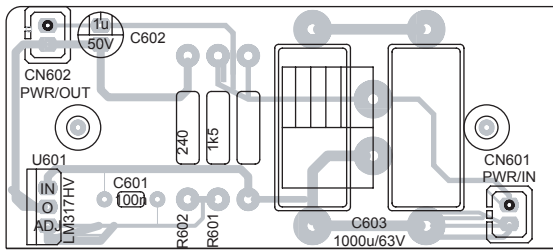


Mixer PCB Copper Side

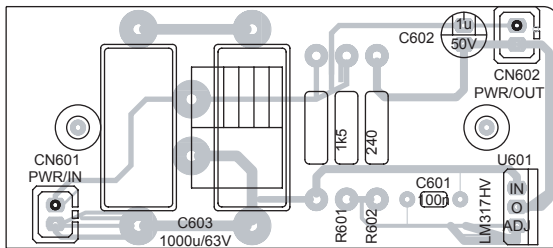
Fender **PASSPORT**
Mixer Section PCB



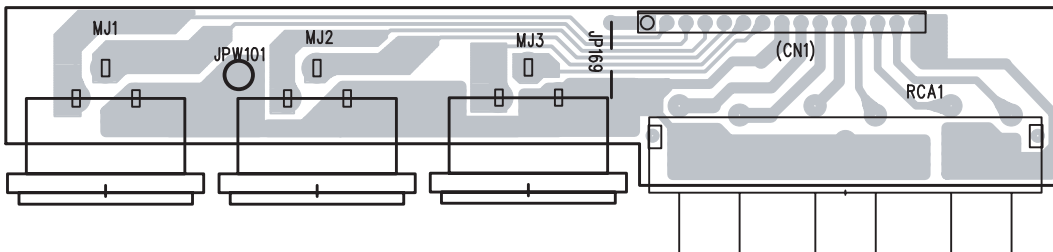
Fender **PASSPORT**
 RCA Pre Amp Schematic Diagram



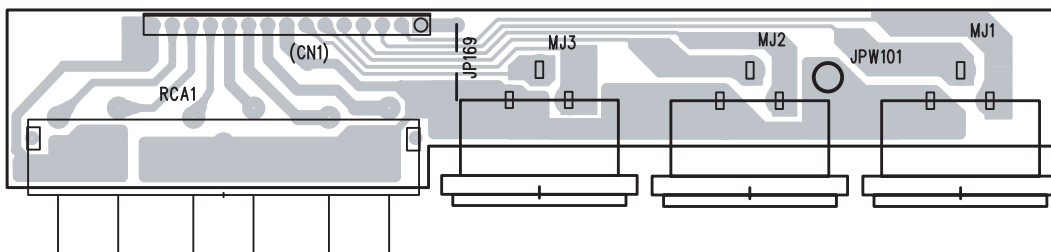
REG PCB Component Side



REG PCB Copper Side

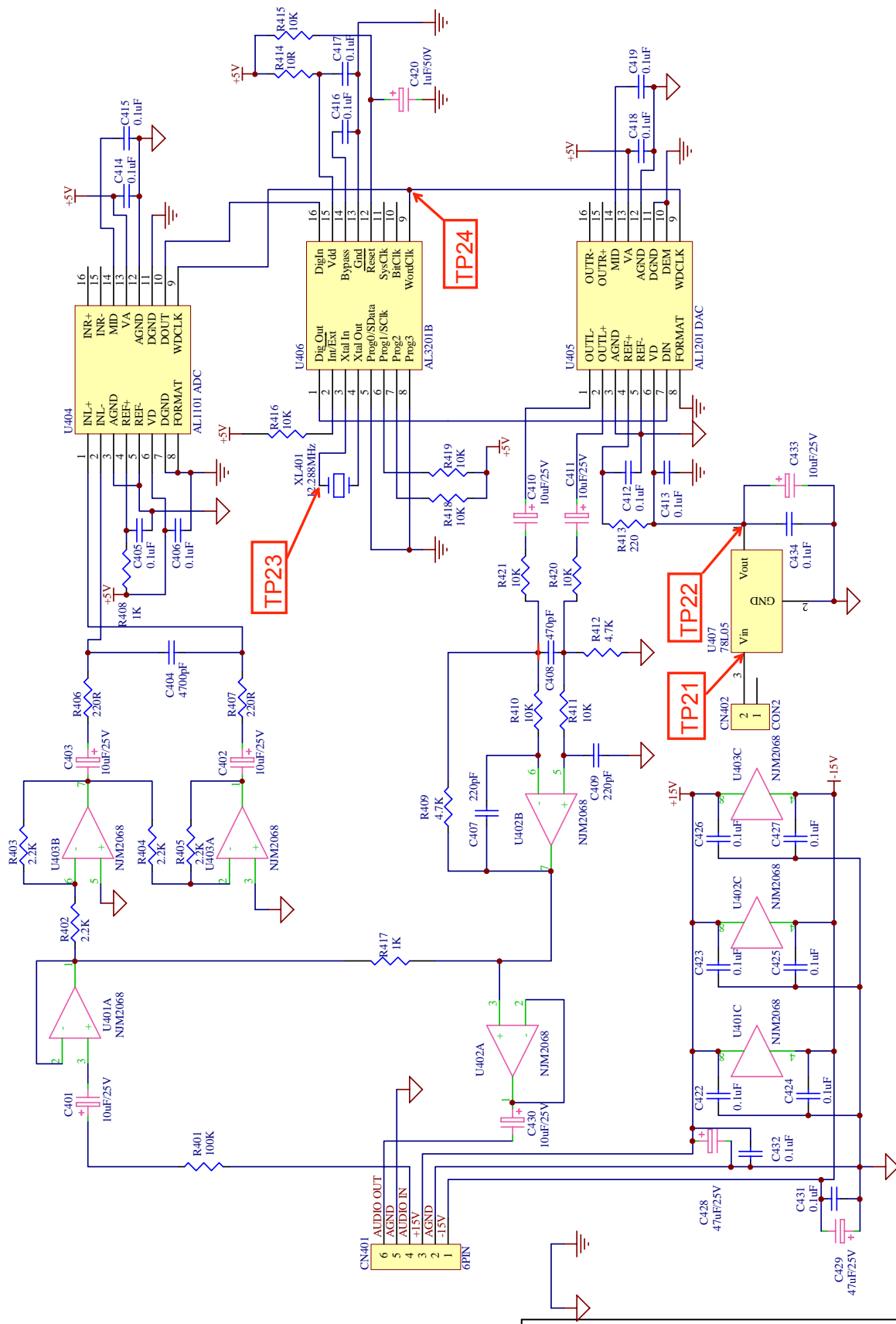


RCA/XLR Input PCB Component Side



RCA/XLR Input PCB Copper Side

Fender **PASSPORT**
RCA/XLR/REG PCB



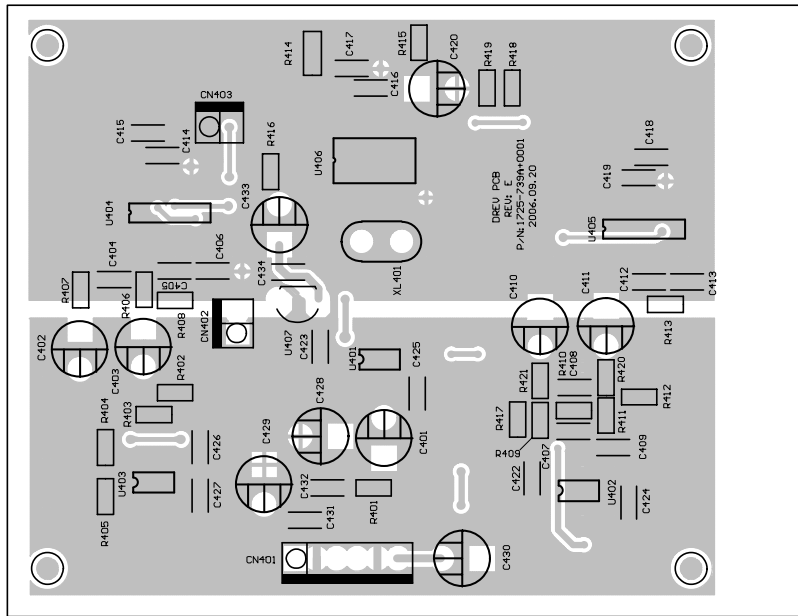
TP23

TP24

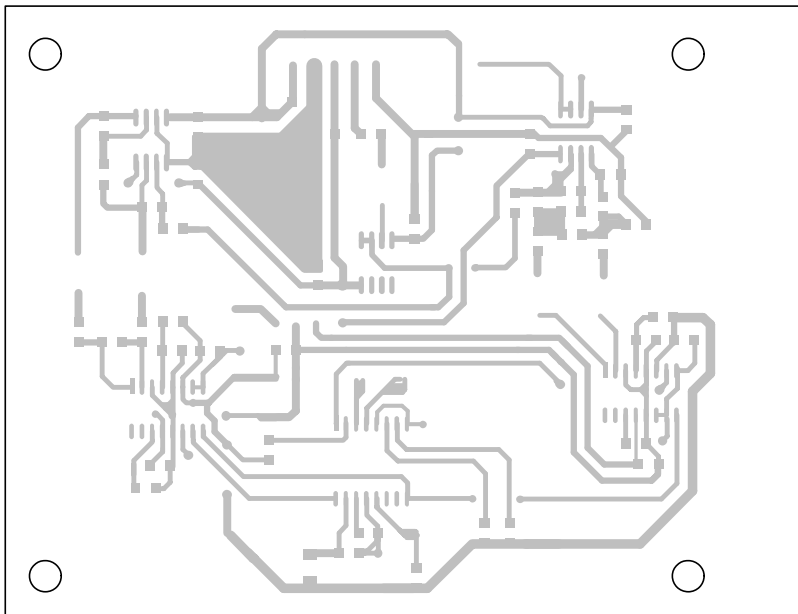
TP22

TP21

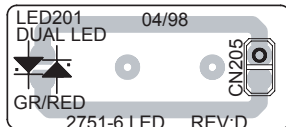
Fender **PASSPORT**
Reverb Schematic Diagram



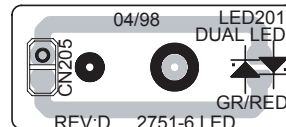
Reverb PCB Component Side



Reverb PCB Copper Side

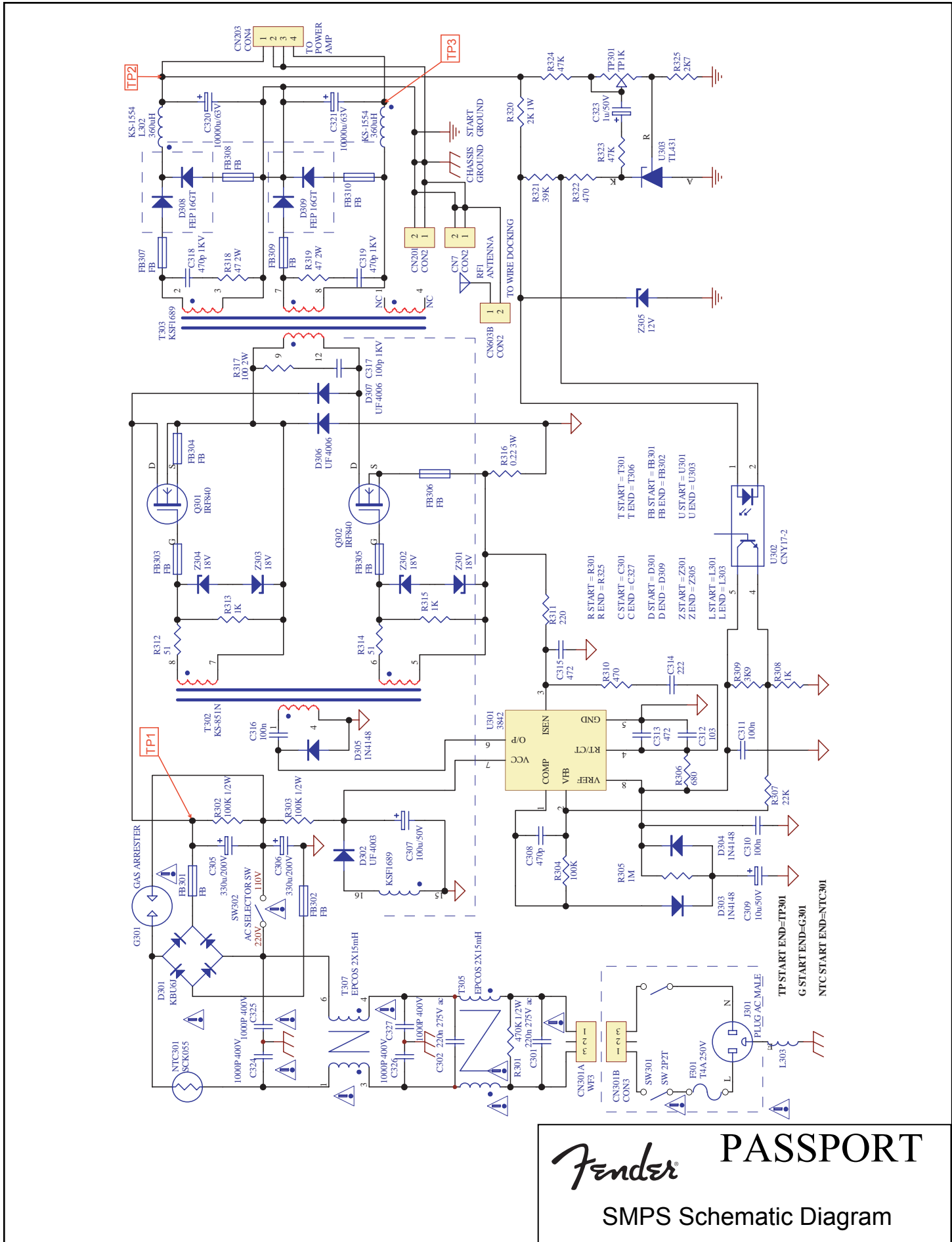


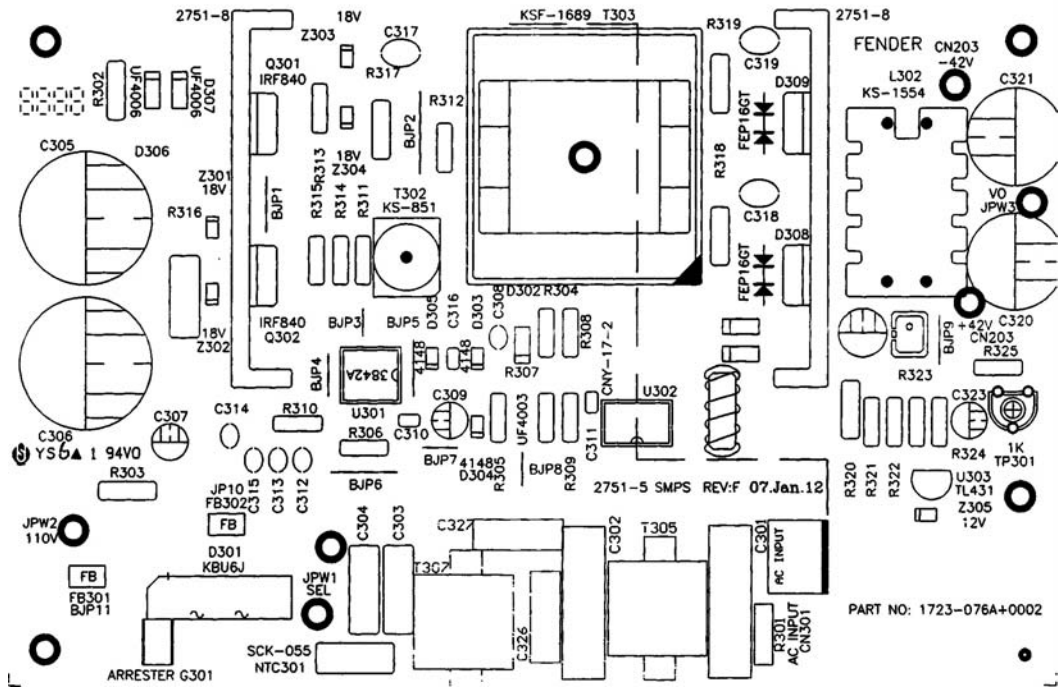
LED PCB Component Side



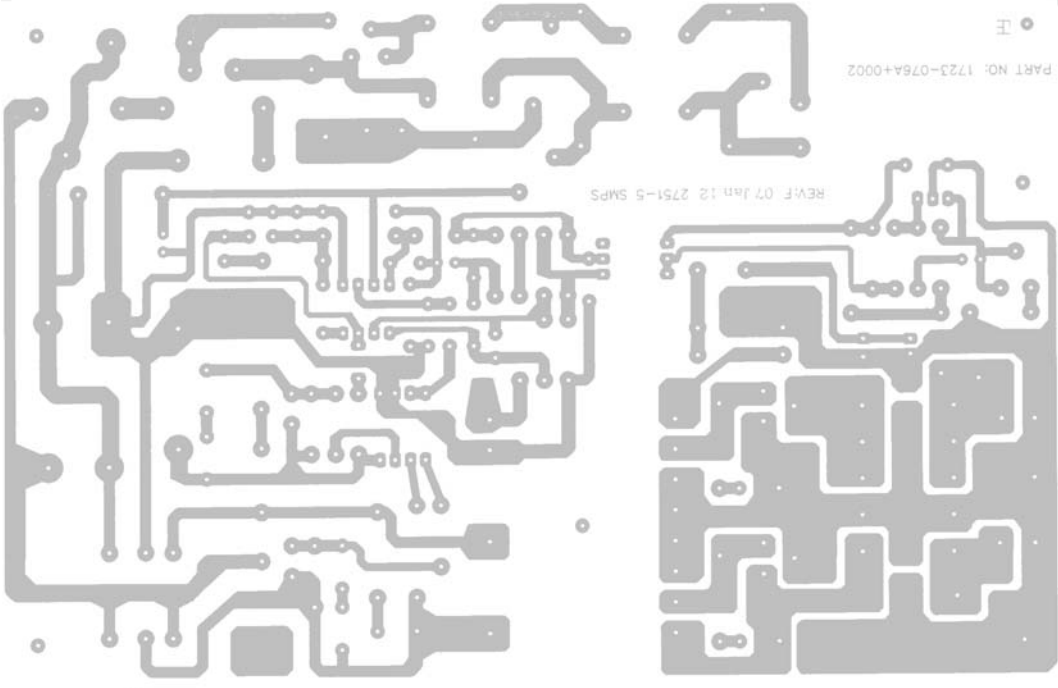
LED PCB Copper Side

Fender PASSPORT
Reverb Section / LED PCB



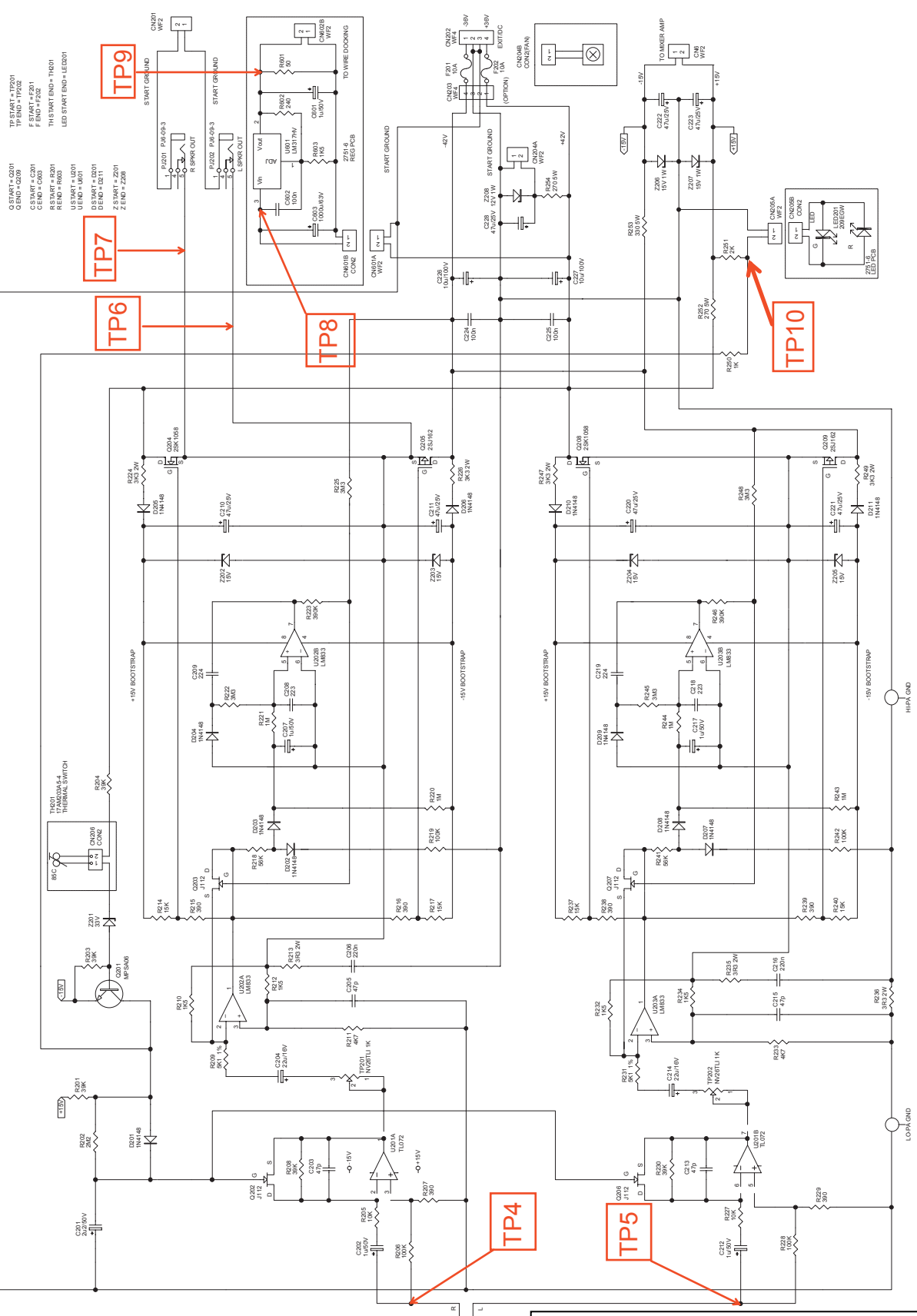


SMPS PCB Component Side



SMPS PCB Copper Side

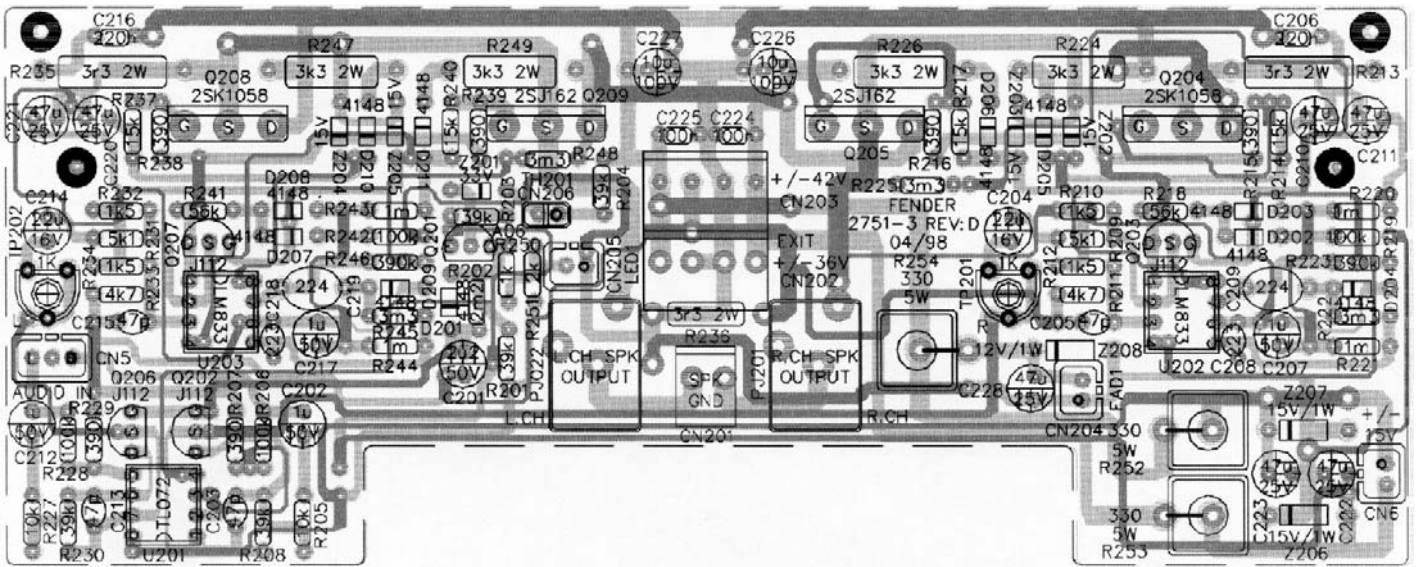
Fender **PASSPORT**
SMPS PCB



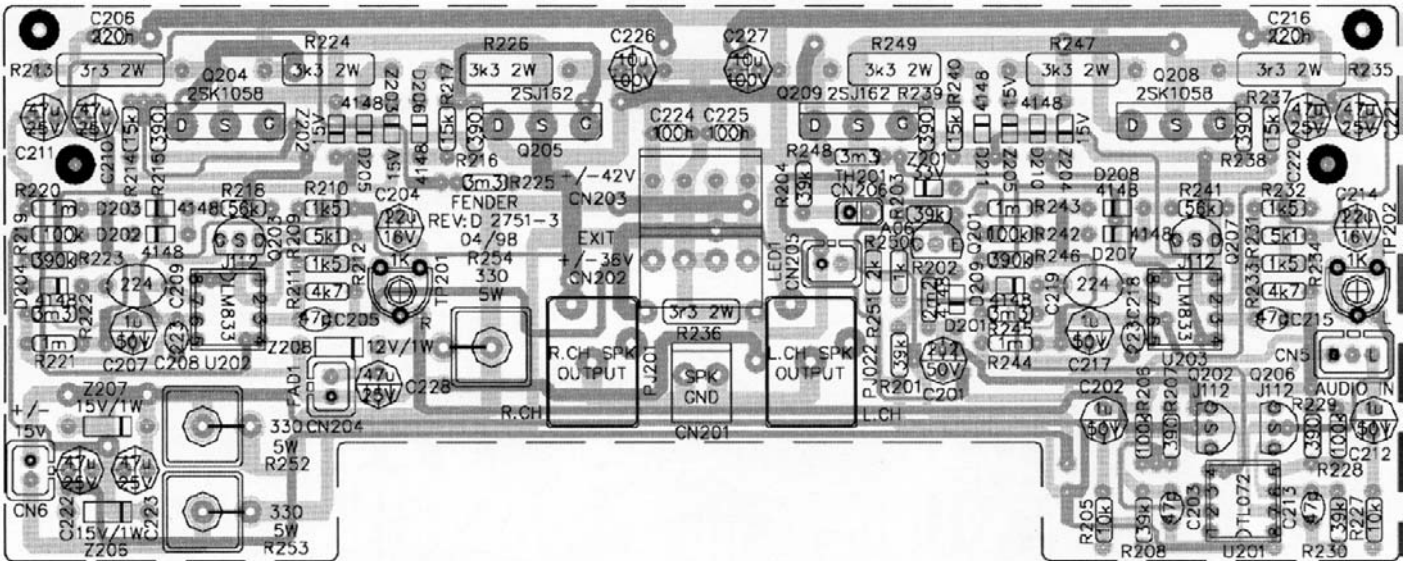
- G START = Q201
- G END = Q208
- C START = C201
- C END = C208
- F START = F101
- F END = F101
- R START = R201
- R END = R208
- U START = U201
- U END = U201
- D START = D201
- D END = D201
- Z START = Z201
- Z END = Z208

Fender PASSPORT

Power Amp Schematic Diagram



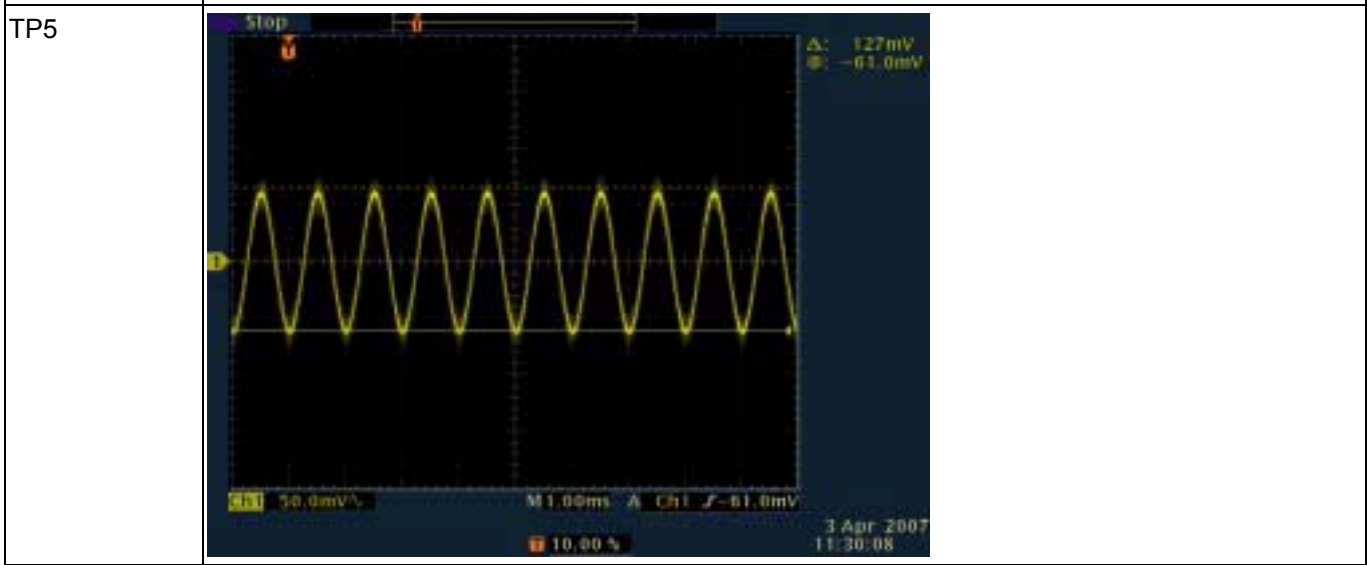
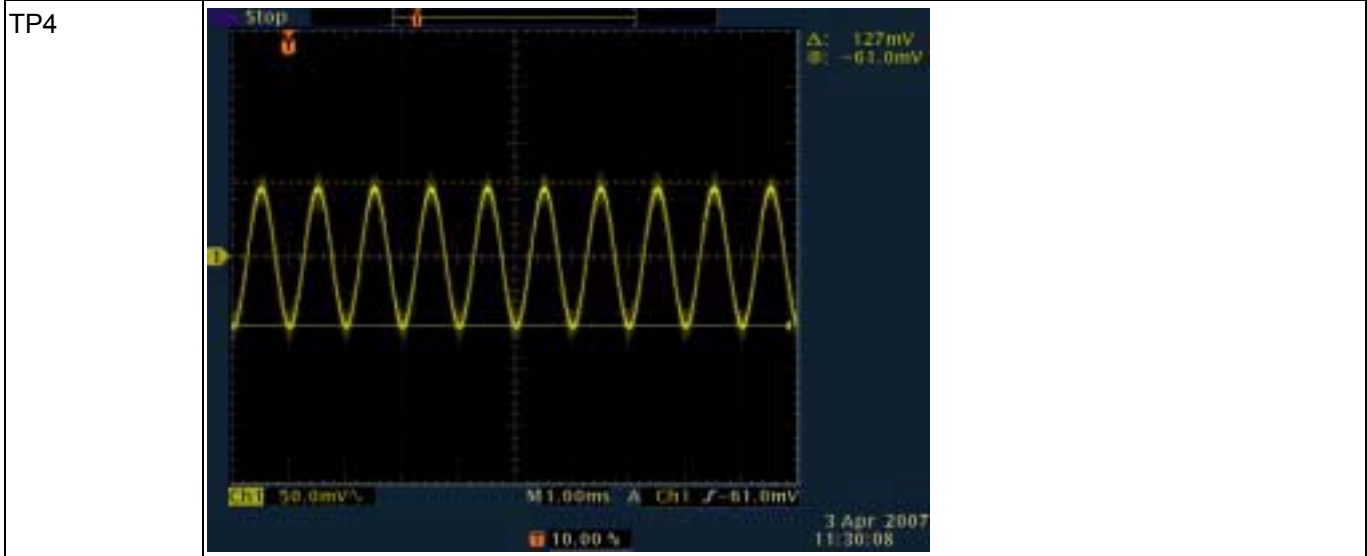
Amplifier PCB Component Side



Amplifier PCB Copper Side

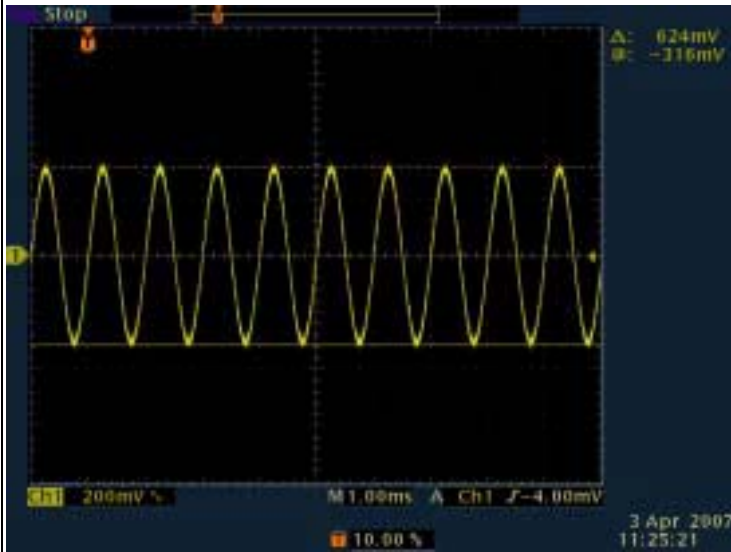
Fender **PASSPORT**
Power Amp Section PCB

TP1	DC 300V
TP2	DC 42V
TP3	DC -42V

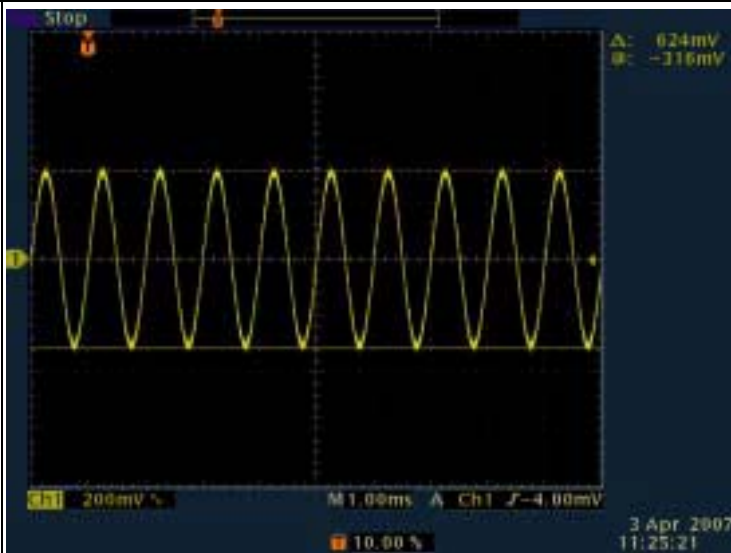


Fender **PASSPORT**
 Test Point Information

TP6



TP7



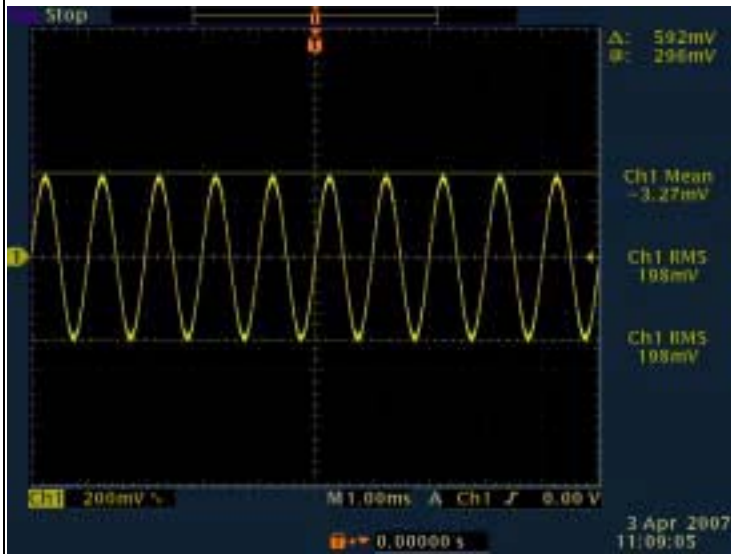
TP8 DC 42V

TP9 DC 8V

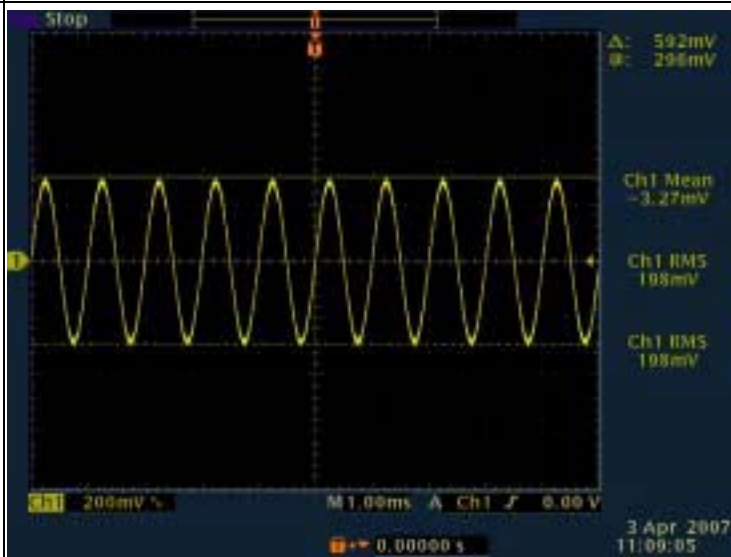
TP10 DC 15V

Fender PASSPORT
Test Point Information

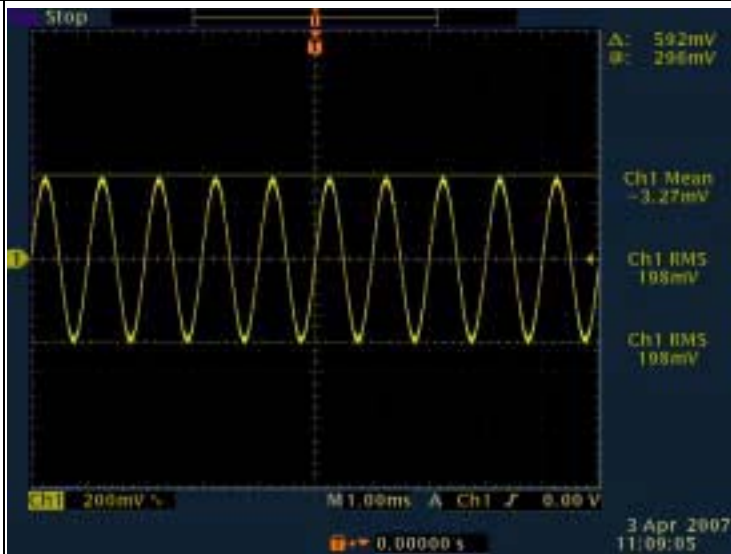
TP11



TP12

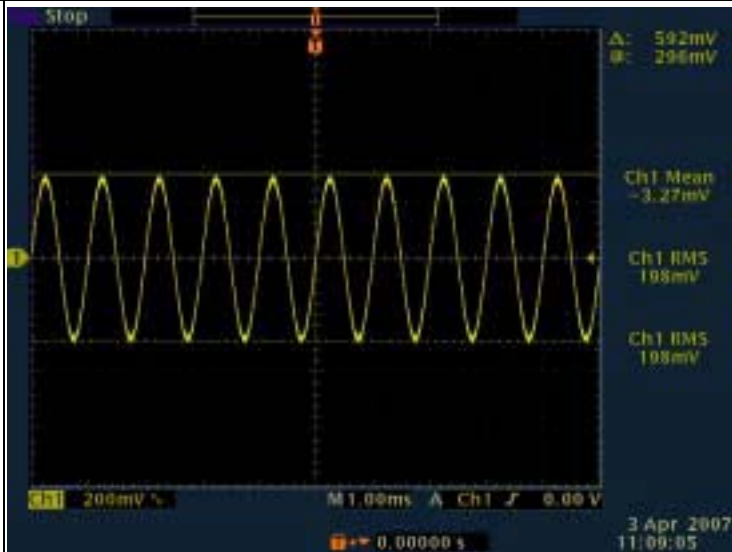


TP13

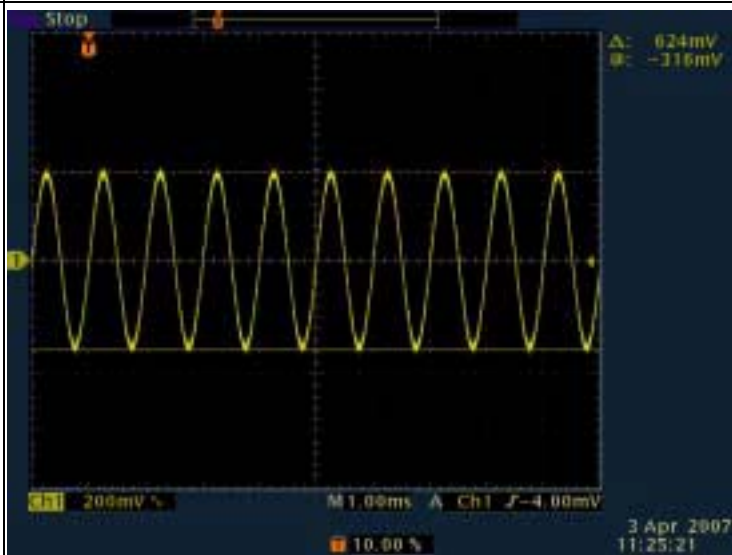


Fender PASSPORT
Test Point Information

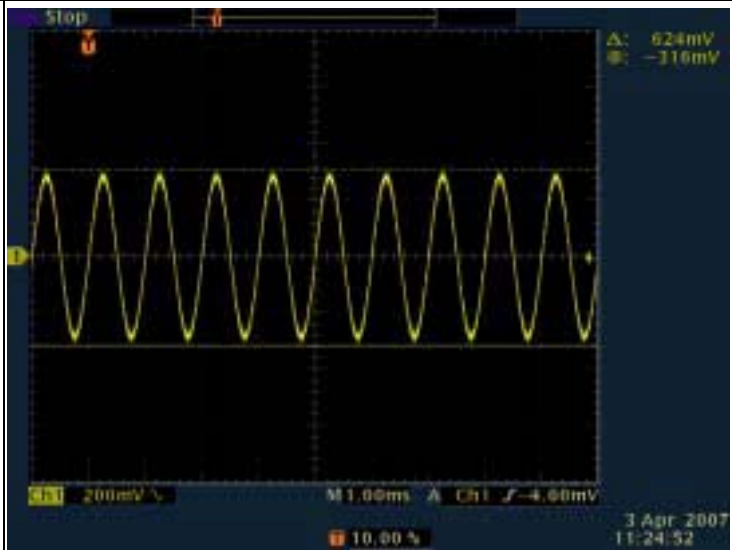
TP14



TP15

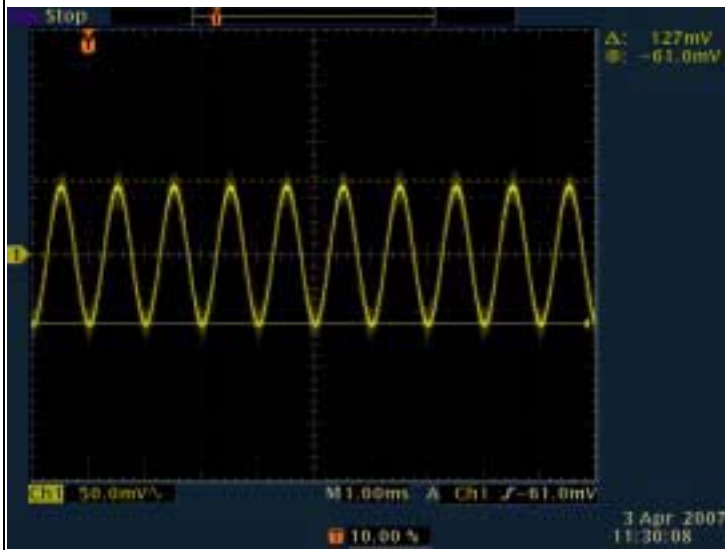


TP16

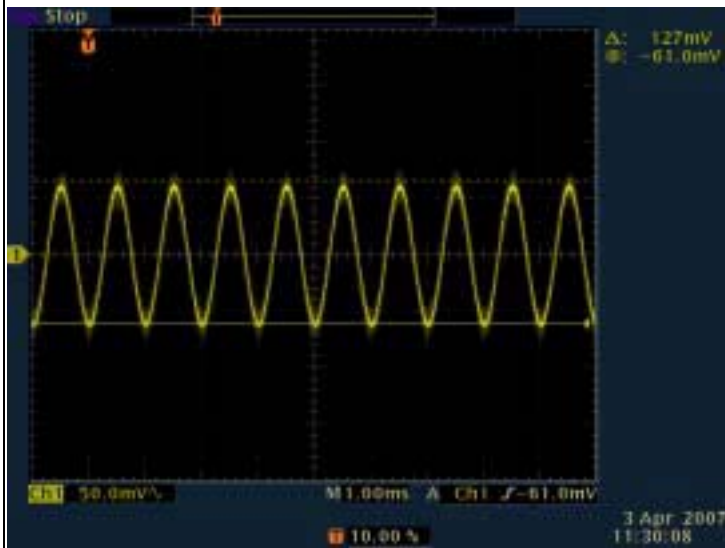


Fender PASSPORT
Test Point Information

TP17



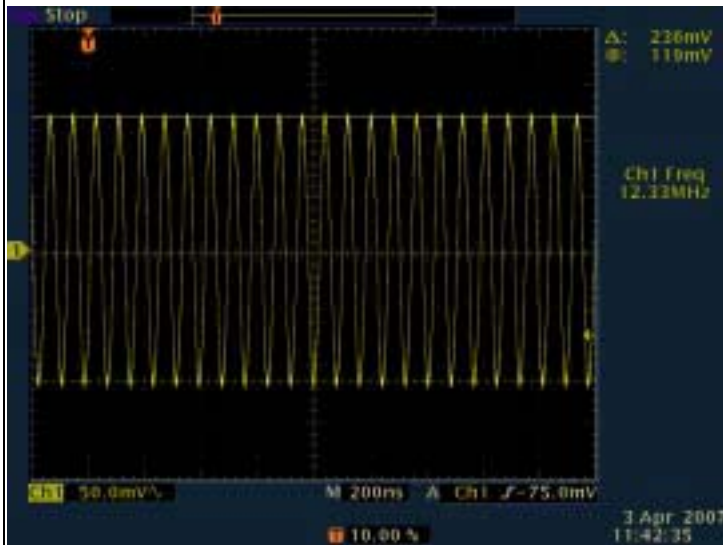
TP18



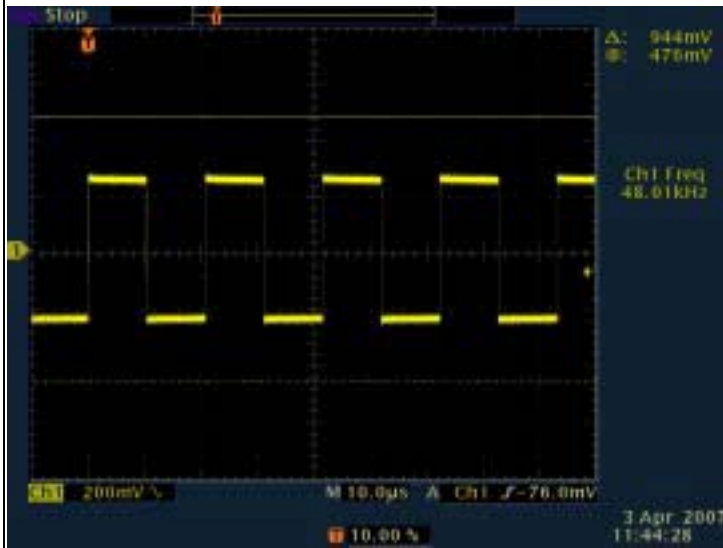
TP19	DC 15V
TP20	DC -15V
TP21	DC 15V
TP22	DC 5V

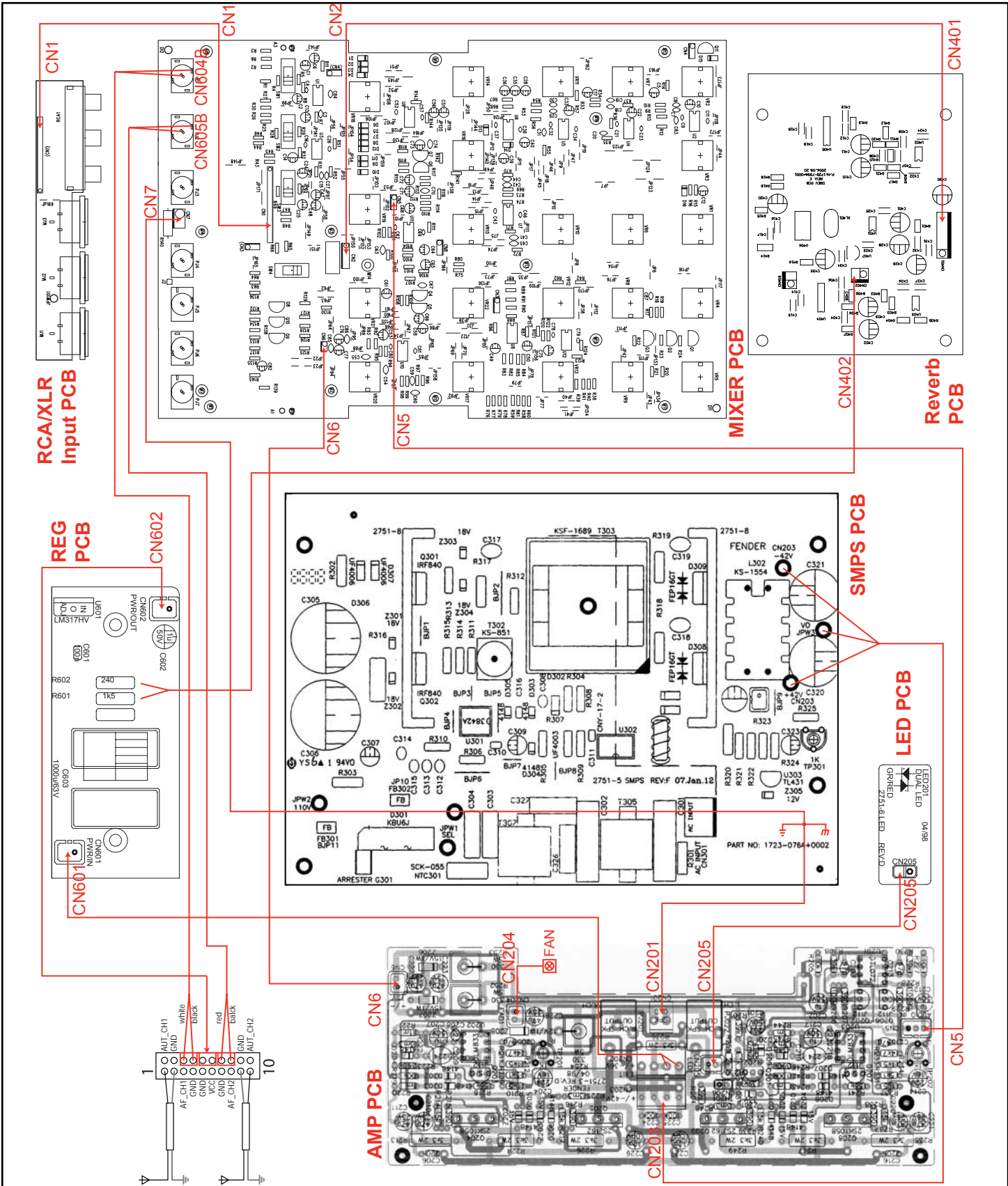
Fender **PASSPORT**
 Test Point Information

TP23



TP24





Fender **PASSPORT**
Wiring Diagram

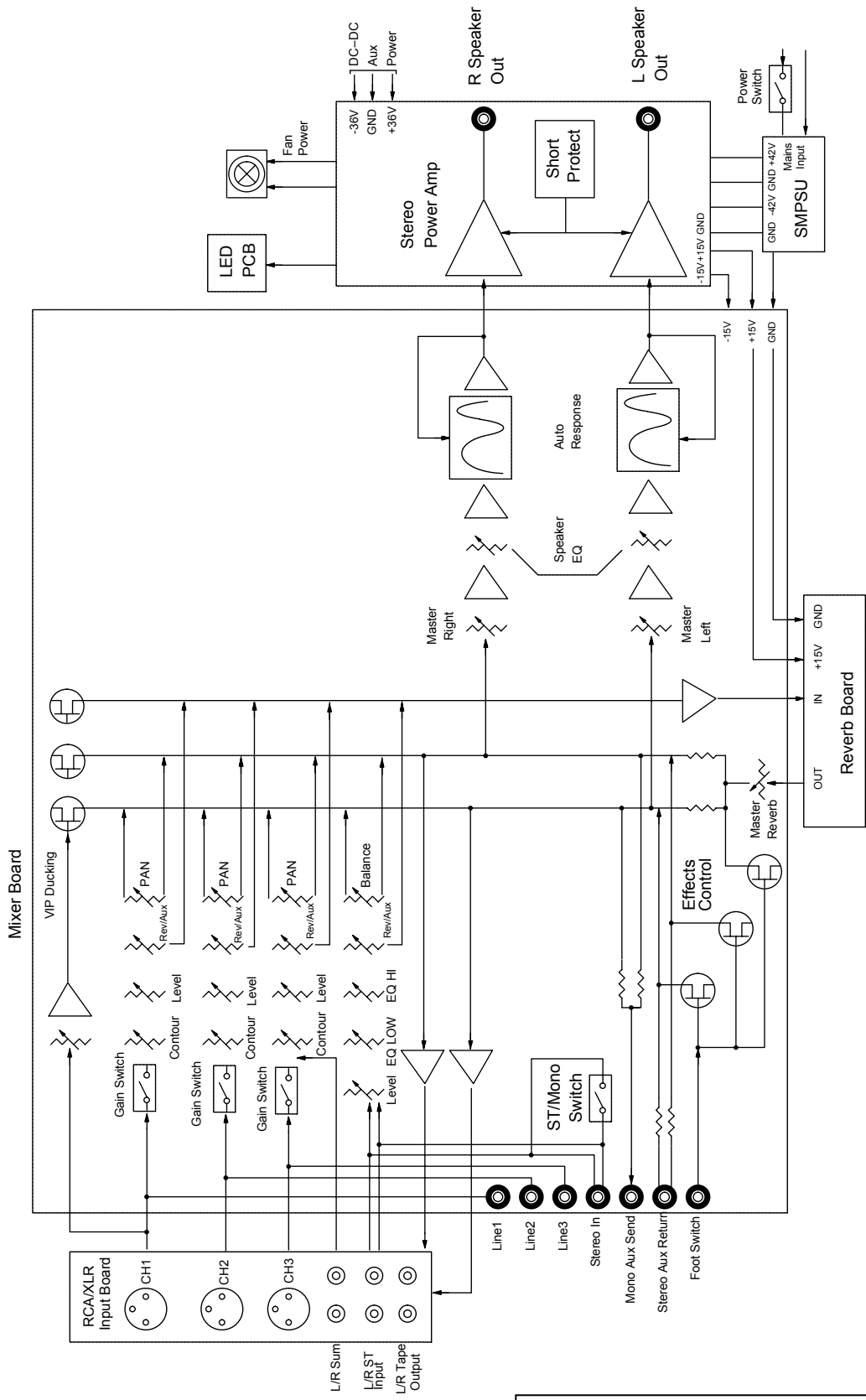
The following is the legend of the mating connections

PCB-P150D11+MIXE			PCB-P150D11+RCA		
CN1	1	GND	CN1	1	GND
	2	MIC1+		2	MIC1+
	3	MIC1-		3	MIC1-
	4	MIC2+		4	MIC2+
	5	MIC2-		5	MIC2-
	6	MIC3+		6	MIC3+
	7	MIC3-		7	MIC3-
	8	GND		8	GND
	9	RCA IN1		9	RCA IN1
	10	RCA IN2		10	RCA IN2
	11	STEREO R		11	STEREO R
	12	STEREO L		12	STEREO L
	13	TAPE OUT R		13	TAPE OUT R
	14	TAPE OUT L		14	TAPE OUT L
	15	GND		15	GND
PCB-P150D11+MIXE			PCB-P150D21+DSPR		
CN2	1	GND	CN401	1	GND
	2	+15V		2	+15V
	3	REV OUT		3	REV OUT
	4	REV IN		4	REV IN
	5	FS		5	FS
PCB-P150D11+MIXE			PCB-P150D11+PWARM		
CN5	1	AUDIO OUT L	CN5	1	AUDIO IN L
	2	GND		2	GND
	3	AUDIO OUT R		3	AUDIO IN R
PCB-P150D11+MIXE			PCB-P150D11+PWARM		
CN6	1	-15V	CN6	1	-15V
	2	+15V		2	+15V
PCB-P150D11+MIXE			PCB-P150D11+SMPS		
CN7	1	GND	CN7	1	GND
	2	GND		2	GND
PCB-P150D11+MIXE			WIRELESS PCB		
CN604B	1	AF_CH1		3	AF_CH1
	2	GND		4	GND
PCB-P150D11+MIXE			WIRELESS PCB		
CN605B	1	AF_CH2		8	AF_CH2
	2	GND		7	GND
PCB-P150D11+PWAM			PCB-P150D11+LED		
CN205	1	GND	CN205	1	GND
	2	+15V		2	+15V
PCB-P150D11+PWAM			PCB-P150D11+REG		
CN601	1	+42V	CN601	1	+42V
	2	GND		2	GND
PCB-P150D11+SMPS			PCB-P150D11+PWARM		
CN201	1	GND	CN201	1	GND
	2	GND		2	GND
PCB-P150D11+SMPS			PCB-P150D21+PWARM		
CN203	1	+42V	CN203	1	+42V
	2	GND		2	GND
	3	GND		3	GND
	4	-42V		4	-42V
PCB-P150D11+REG			WIRELESS PCB		
CN602	1	GND		5	GND
	2	+8V		6	+8V

Fender

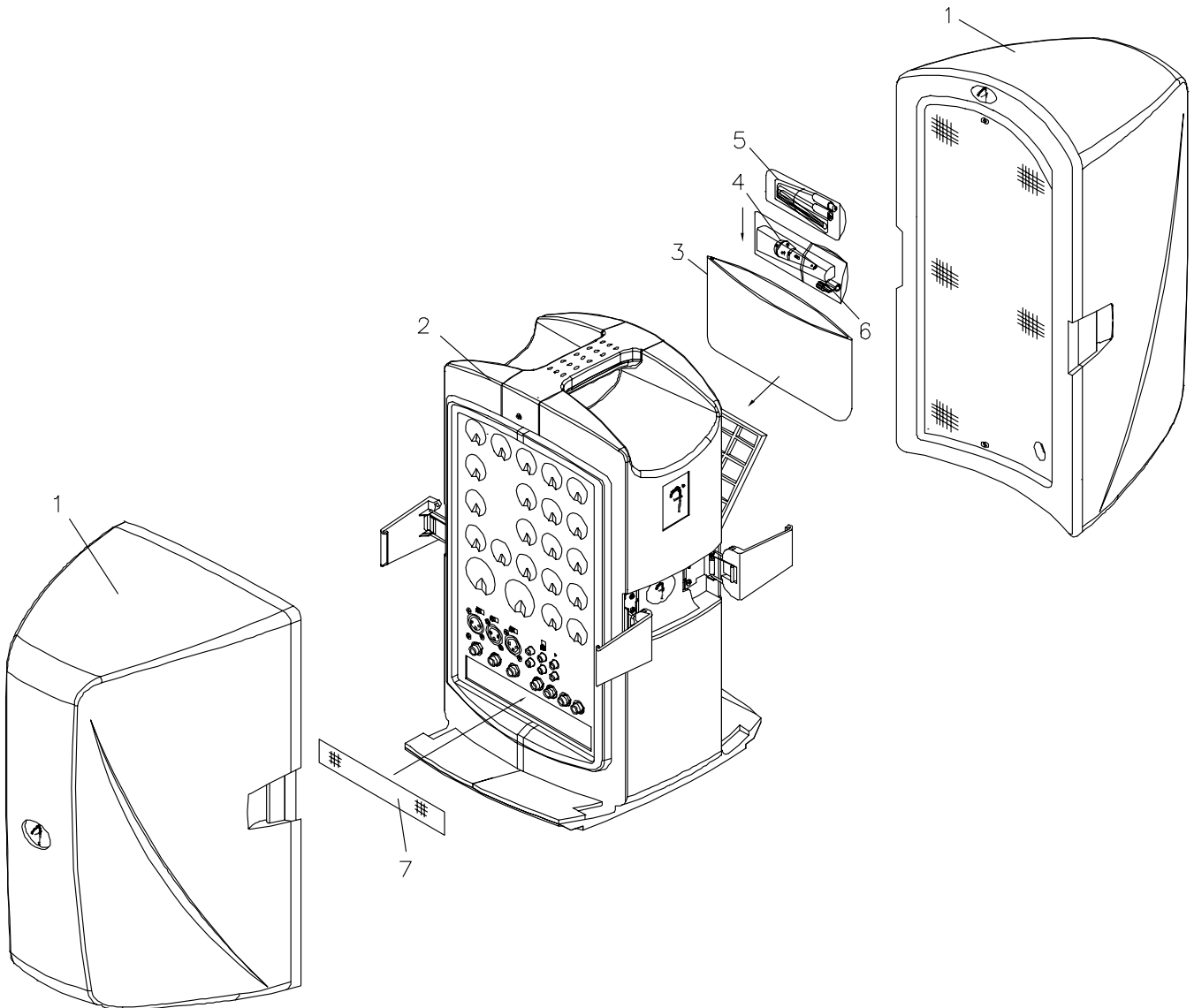
PASSPORT

Wiring Diagram



Fender **PASSPORT**
Block Diagram

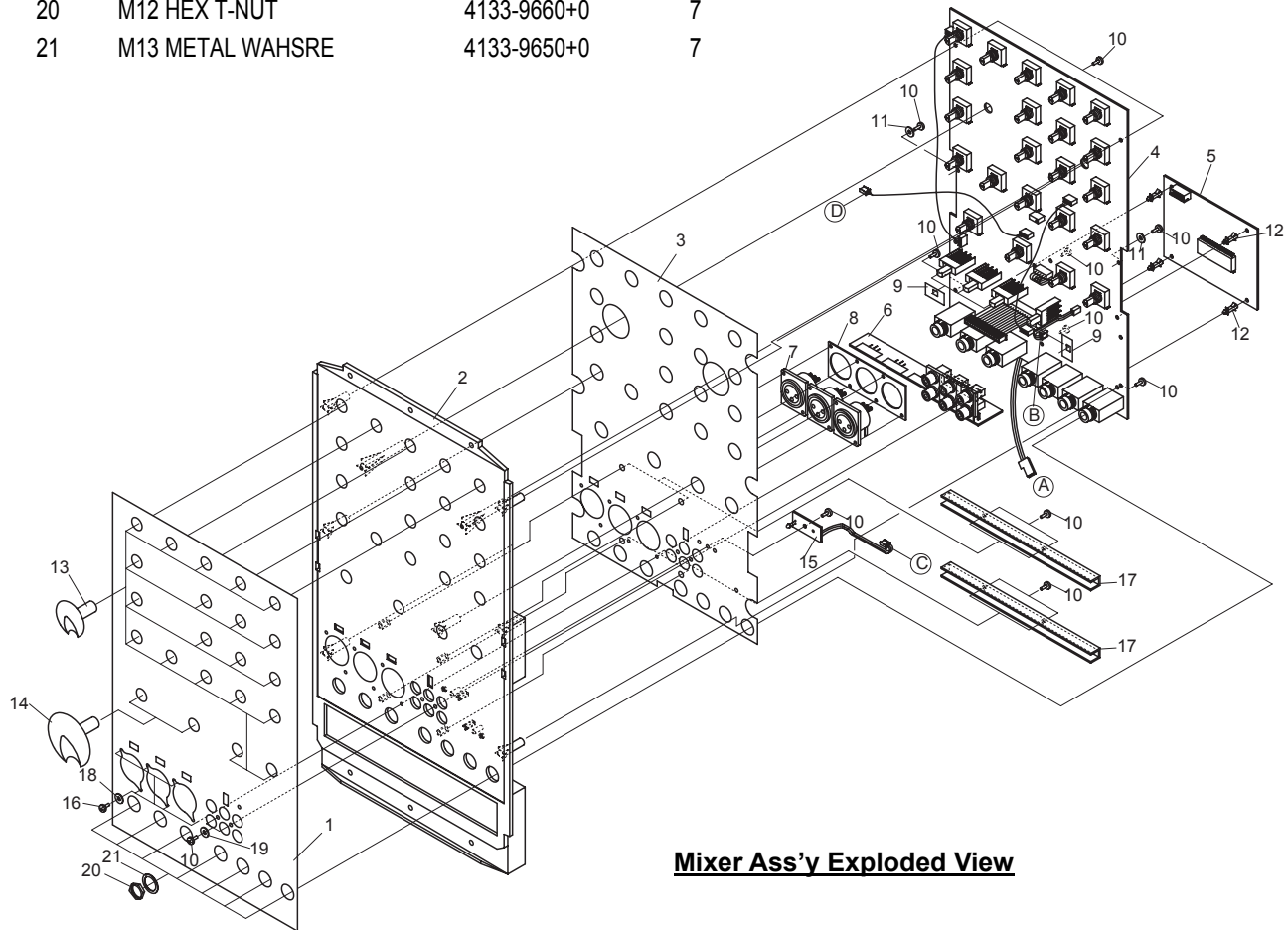
NO.	DESCRIPTION	PART NO.	QTY
1	SPEAKER ASSEMBLY	SS-EF010C-SPK	2
2	TOWER HOUSING ASSEMBLY		1
3	GIG BAG	1497-2132+0	1
4	MICROPHONE	1525-1120+0	1
5	MIC CABLE	7010-8290+0	1
6	MIC CLIP	4133-9100+0	1
7	DSUT FILTER	9500-0900+0	1



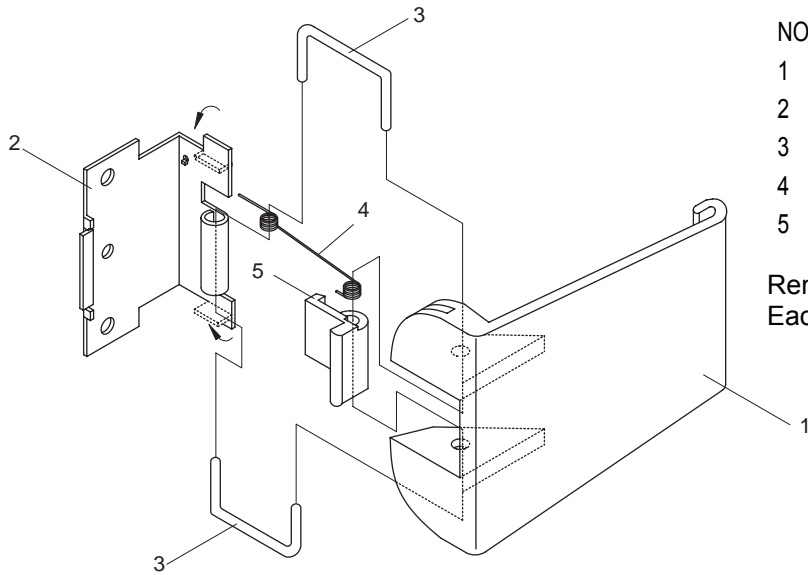
Main Unit Ass'y Exploded View

Main Unit Ass'y Exploded View

NO.	DESCRIPTION	PART NO.	QTY
1	FRONT SHEET	8900-1651+0	1
2	FRONT PANEL	4153-2770+1	1
3	SHIELD PLATE	4133-9550+0	1
4	MIXER PCB ASSEMBLY	1723-073A+0000	1
5	REVERB PCB ASSEMBLY	1723-075A+0000	1
6	RCA/XLR PCB ASSEMBLY	1	
7	XLR MIC JACK (RCA/XLR ASSY)	2113-1223+0	3
8	MIC JACK BRACKET (RCA/XLR)	4133-9570+0	1
9	SWITCH COVER	3100-9080+0	4
10	3x8MM SCREW TF	2954-3008+3000	15
11	M3 FIBER WASHER	2601-3008+0801	2
12	PCB STANDOFF	4153-1220+0	4
13	MIXER CONTROL KNOB	4153-2830+0	20
14	MASTER CONTROL KONB	4153-2820+0	2
15	LED PCB ASSEMBLY	1723-074A+0	1
16	3x8MM SCREW PHPS	2944-3008+3000	6
17	"U" BAR	4153-2980+0	2
18/19	M3 METAL WASHER	2600-3003+0402	8
20	M12 HEX T-NUT	4133-9660+0	7
21	M13 METAL WAHSRE	4133-9650+0	7



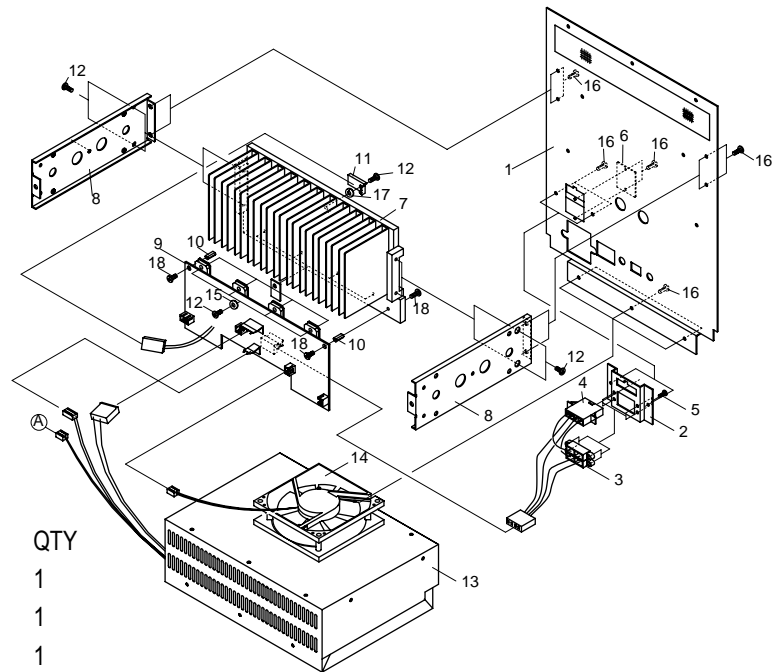
Mixer Exploded View



NO.	DESCRIPTION	PART NO.	QTY
1	LATCH ARM	4153-2730+0	1
2	LATCH BRACKET	4133-9540+0	1
3	LATCH "C" PINS	4133-9430+0	2
4	LATCH SPRING	4133-9550+0	1
5	LATCH SAFETY CATCH	4153-2740+1	1

Remark:
Each unit contains 4 latch assemblies.

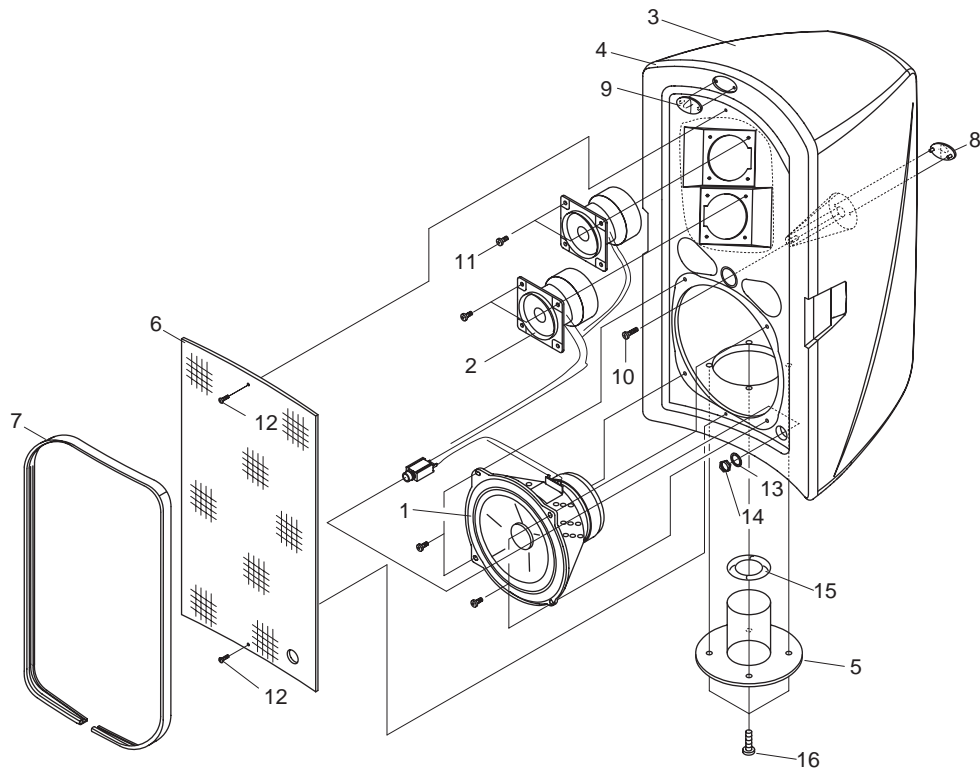
Latch Ass'y Exploded View



Power Module Ass'y Exploded View

NO.	DESCRIPTION	PART NO.	QTY
1	REAR PANEL	4133-946G+0	1
2	AUX POWER CON BRACKET	4133-9510+0	1
3	GM FUSE HOLDER HOUSING	4153-1160+0	1
4	AUX POWER CONNECTOR	7010-0140+0	1
5	2.6x6MM SCREW TF	2934-2606+3000	2
6	FUSE COVER	1454-2590+0	1
7	POWER AMP HEAT SINK	5400-1881+1	1
8	MOUNTING BRACKET	4133-9490+0	2
9	POWER AMP PCB ASSEMBLY	PCB-P150D11+PWRM	1
10	BRASS TUBE STANDOFF	4133-9580+0	2
11	THERMAL MOUNTING BRACKET	4133-9090+0	1
12	3x12MM SCREW PHPS	2944-3012+3000	9
13	SMPSU MODULE	SS-P150D11+SMOS	1
14	DC FAN (SMPSU MODULE)	8900-9520+0	1
15	M3 METAL WASHER	2606-3005+0803	4
16	3x6MM SCREW PHPS	2904-3014+3000	11
17	M3 METAL SPRING WASHER	2607-3009+0553	12
18	3x8MM SCREW PHPS	2954-3008+3000	4

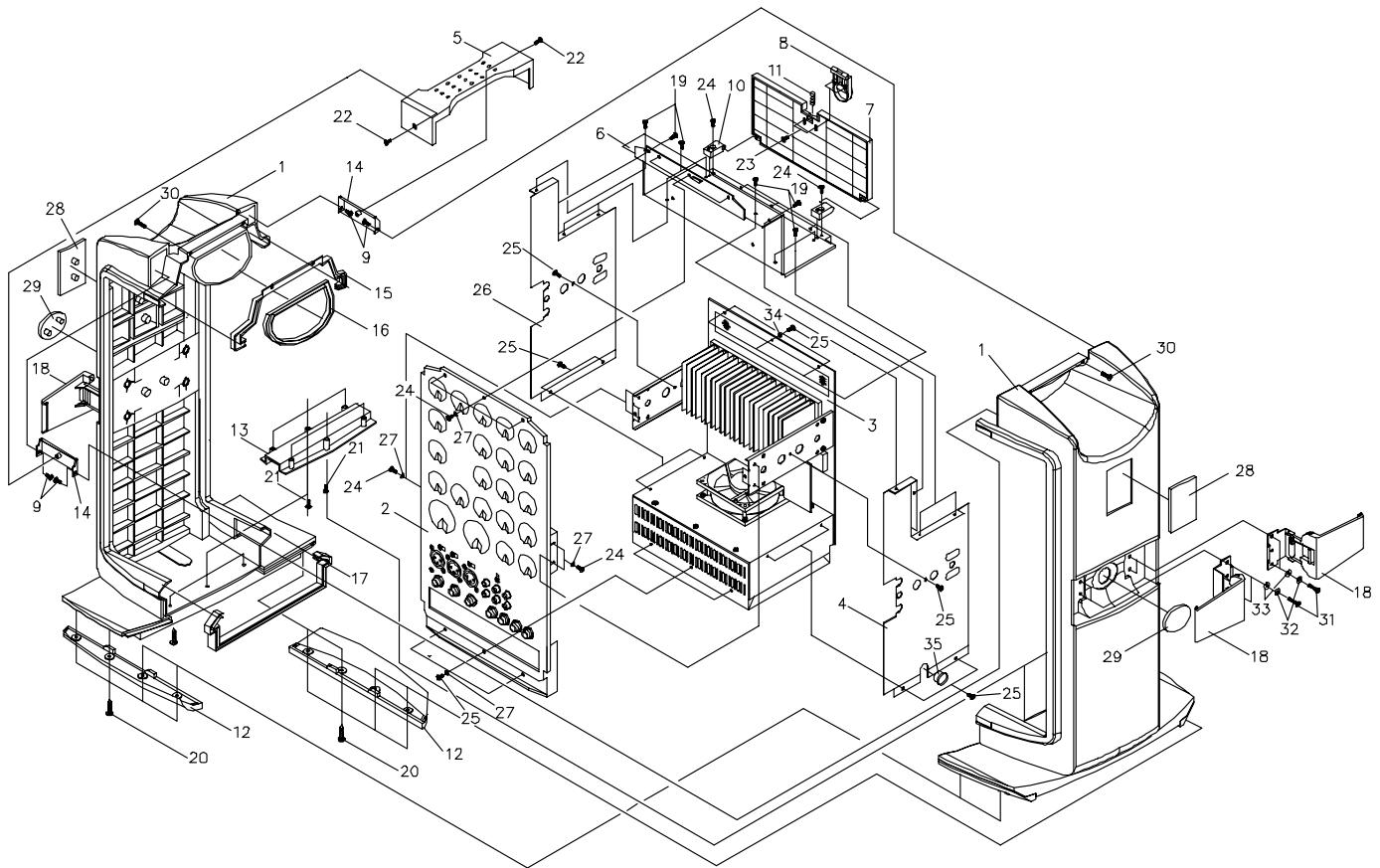
Latch Exploded View



Speaker Ass'y Exploded View

NO.	DESCRIPTION	PART NUMBER	QTY
1	PD150 8 OHM WOOFER	8900-5870+0	1
2	PD150 4 OHM TWEETER	8900-3500+0	2
3	SPEAKER BOX PD150	1464-4302+1	1
4	BAFFLE PD150	4154-3801+0	1
5	STAND PLOG	4154-3841+0	1
6	SPEAKER GRILLE	4133-9440+0	1
7	BAFFLE GASKET	4153-2880+0	1
8	SPRUE CAP (BLK) PD150	4153-2812+0	1
9	RED SPRUE CAP	4153-2900+0	1
10	M4x14mm SCREW PHPS	2954-4014+3000	1
11	M4x14mm SCREW TF	2954-4010+3000	8
12	3x10MM SCREW FLAT HEAD	2951-3010+3000	2
13	M12 WAHSRE	4133-2810+0	1
14	12MM HEX NUT	4133-2820+0	1
15	SPEAKER STAND "O" RING	4152-2091+0	1
16	6x25MM SCREW TF	2904-6025+3000	4

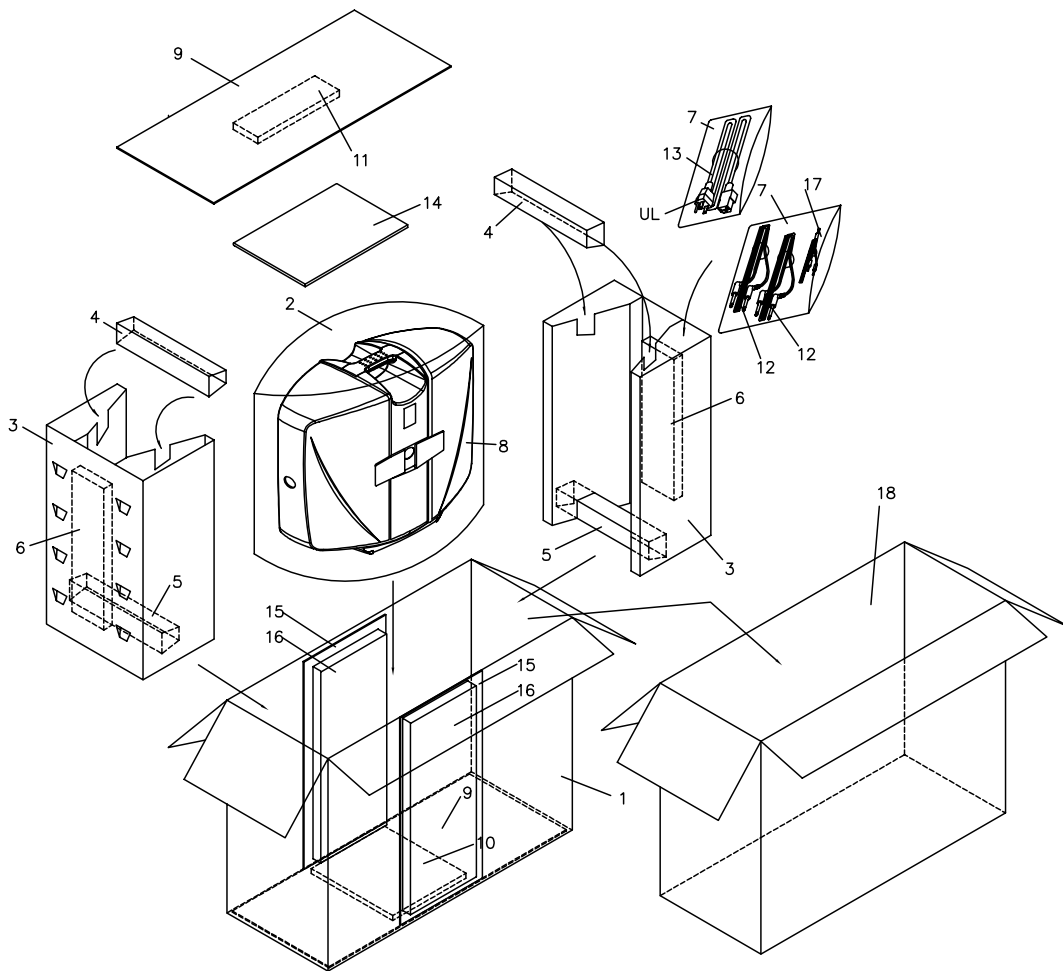
Speaker Ass'y Exploded View



Tower Housing Ass'y Exploded View

NO.	DESCRIPTION	PART NO.	QTY	NO.	DESCRIPTION	PART NO.	QTY
1	CONSOLE PD 150	4153-2701+0	2	21	SCREW B-TITE BH M4X14MM BZ CROSS	2954-4014+3000	6
2	FRONT PANEL EXPLoder		1	22	SCREW FLAT-CS M3X5MM BZ CROSS	2901-3005+3000	2
3	POWER EXPLoder		1	23	SCREW TAP-BT BH M2.6X6MM BZ CROSS	2934-2606+3000	2
4	SIDE PALTE-B	4133-9480+0	1	24	S-TITE 3X8 (BLK)	2944-3008+3000	9
5	HANDLE COVER	4153-2690+0	1	25	SCREW TAP-BT BH M3X6MM BZ CROSS	2944-3006+3000	12
6	PARTITION	4133-9450+0	1	26	SIDE PLATE-A	4133-9470+0	1
7	DOOR	4153-2750+0	1	27	METAL WASHER M3X0.5X8MM BZ	2600-3005+0803	10
8	LOCKER DOOE	4153-2760+0	1	28	FENDER BADGE PD150	4154-3831+0	2
9	F3X8MM SELF TAPPING	2954-3008+3000	4	29	SPRUE CAP (BLK)	4153-2812+0	2
10	HINGE	4153-2780+0	2	30	4X16MM PA	2910-4016+3000	2
11	COMPRESSION SPRING	4133-9560+0	1	31	SCREW S-TITE 4X16MM PH BLK ZINC	2940-4016+3000	8
12	FOOT STAND PD150	4153-2712+0	2	32	SPRING WASHER M4X0.8X6.5MM BZ	2607-4008+0653	8
13	SUPPORT RIB	4153-2720+0	1	33	METAL WASHER M4X0.8X10MM BZ	2600-4008+1003	8
14	HANDLE BKT	4132-4901+0	2	34	SPRING WASHER M3X0.9X5.5MM BZ	2670-3009+0553	3
15	GASKET - TOP PD150	4153-2862+1	1	35	HALO BUSHING 0813C	2113-9535+0	1
16	GASKET - HANDLE PD150	4153-2852+1	1				
17	GASKET - BOTTOM PD150	4153-2872+1	1				
18	LATCH LOCKER EXPLoder		4				
19	TTS SCREW M2.6X8 BH	2944-2608+0000	8				
20	SCREW TAP-C2 BH M4X10 BZ CROSS	2954-4010+3000	8				

Tower Housing Exploded View



Packing Ass'y Exploded View

NO.	DESCRIPTION	PART NO.	QTY
1	GIFT BOX PD150	1434-2104+0-3	1
2	2751-P12-0 PLOY BAG	1497-2540+0	1
3	2751-P1-0 INNER PAD	1434-2300+0-2	2
4	2751-P2-0 INNER PAD	1434-2400+0-1	2
5	2751-P3-0 INNER PAD	1434-2500+0-1	2
6	2751-P4-0 P.E. FOAM	9500-8700+0	2
7	POLYGAB P.E. 04X10X10	1497-2092+0	2
8	PD150 UNIT		1
9	2751-P7-0 CARTON BOARD	1434-2200+0-1	2
10	2751-P6-0 P.E. FOAM	9500-0890+0	1
11	2751-P5-0 P.E. FOAM	9500-0880+0	1
12	SPK CABLE MONO 90 ANGLE PLUG L=30FT	7010-0000+0	2
13	SJT #18/3C 2M BLK POWER CORD	7011-6210+0	1
14	OWNER'S MANUAL PD150	4301-7217+0	1
15	INNER PAD 480X230X3 A-A	1450-9450+0	2
16	PE FOAM-SIDE	1493-1701+0	2
17	RCA CABLE	7011-3271+0	1
18	OUTER CARTON	1437-9901+0-1	1

Packing Exploded View