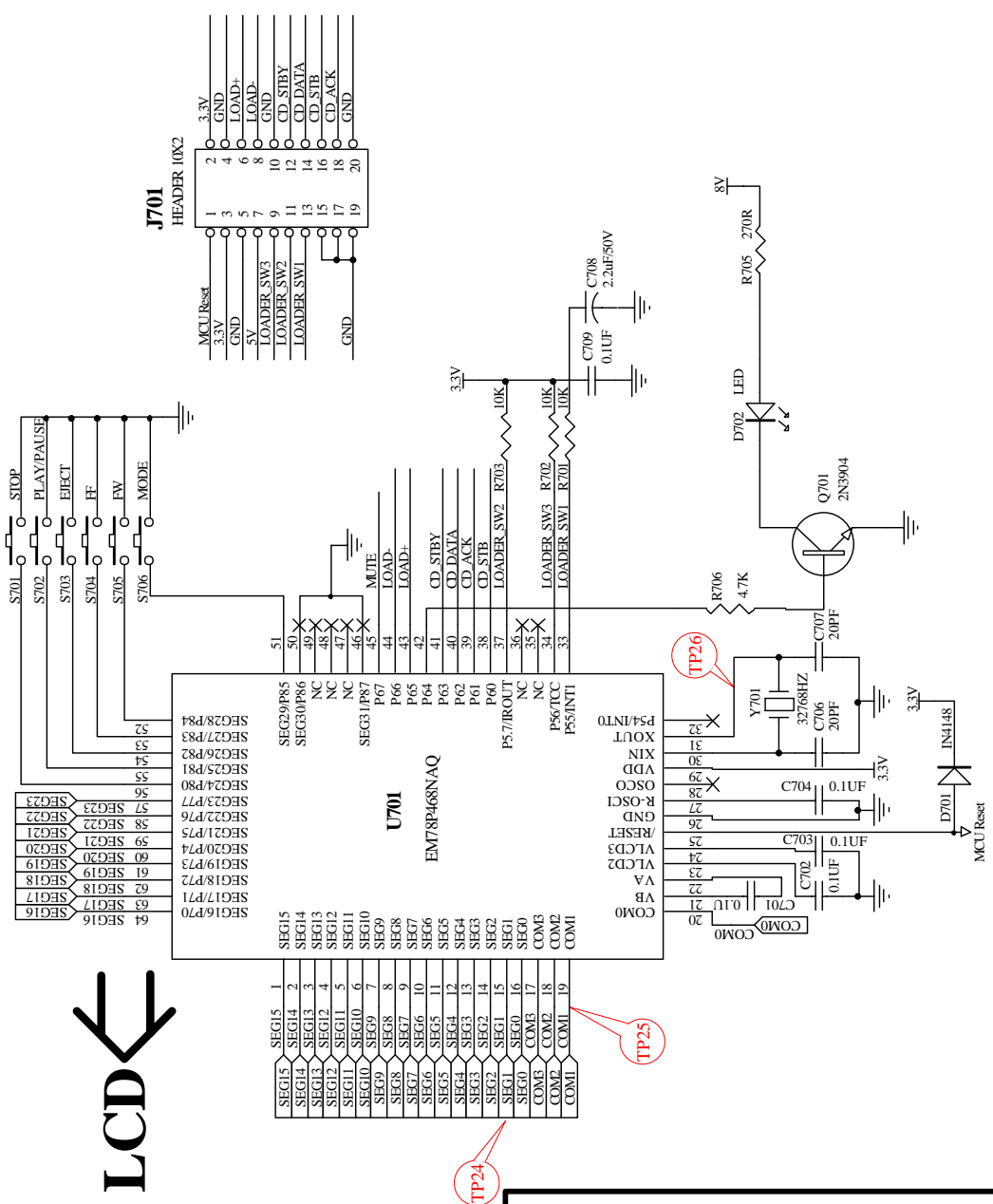
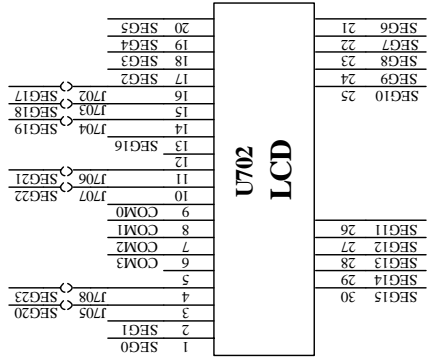


Fender **PASSPORT**
CD SERVO Schematic Diagram



LCD ←



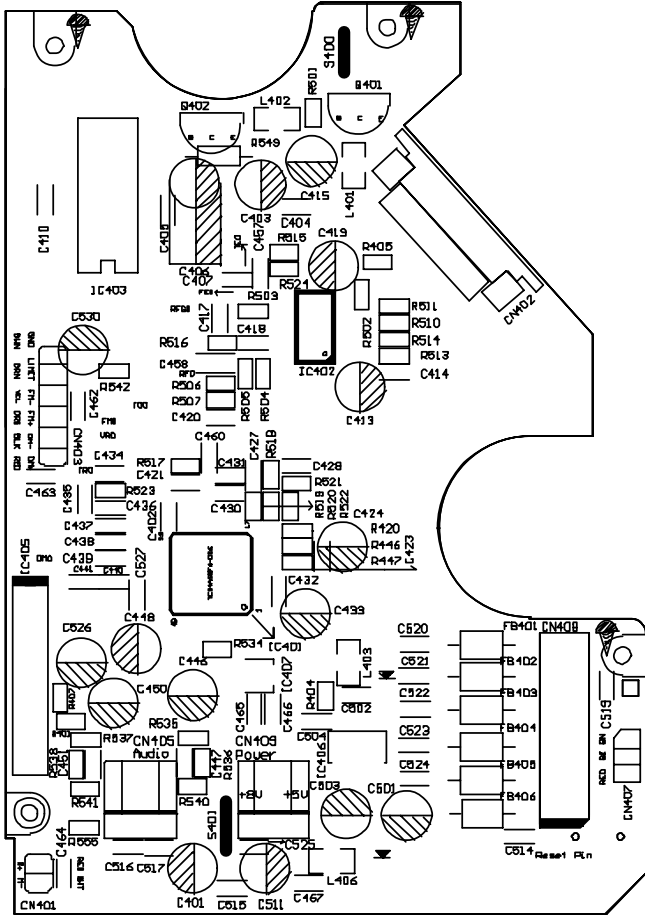
NOTICE

以下脚位为IC烧录脚

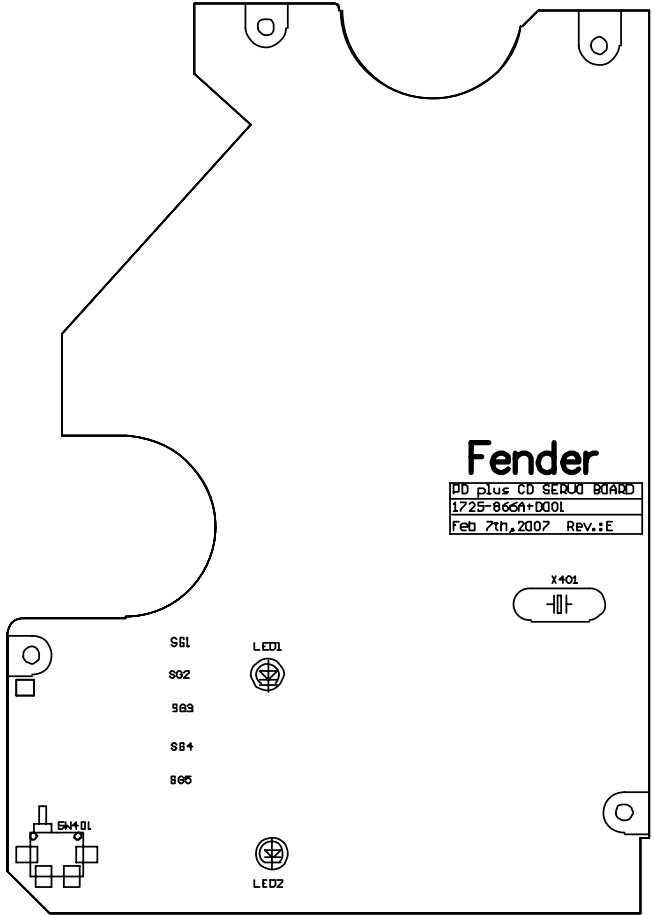
IC Pin / Name	Program Pin Name
25/RESET	VPP
32/PS4	ACLK
33/PS5	DNCLK
34/PS6	DATIN
38/P60	PCMB
39/P61	OEB
29/VDD	VDD
26/GND	GND

以下为IC脚与烧录座连线示意图

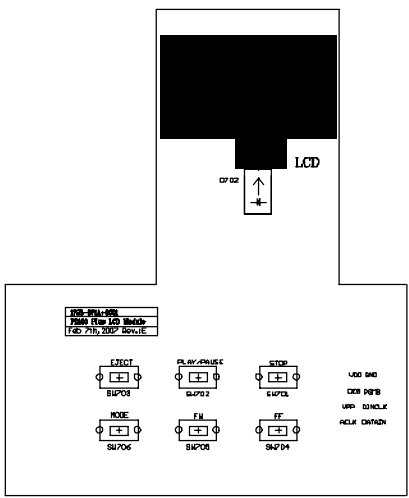
烧录座40 PIN插座



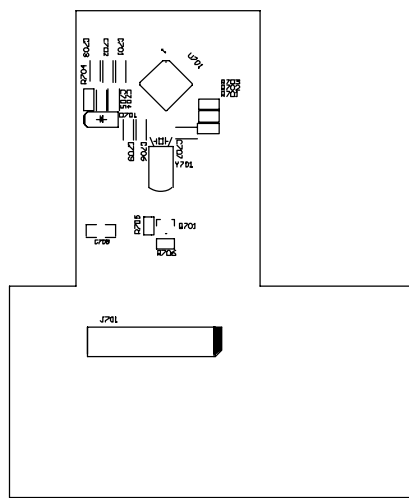
SERVO PCB Component Side



SERVO PCB Copper Side



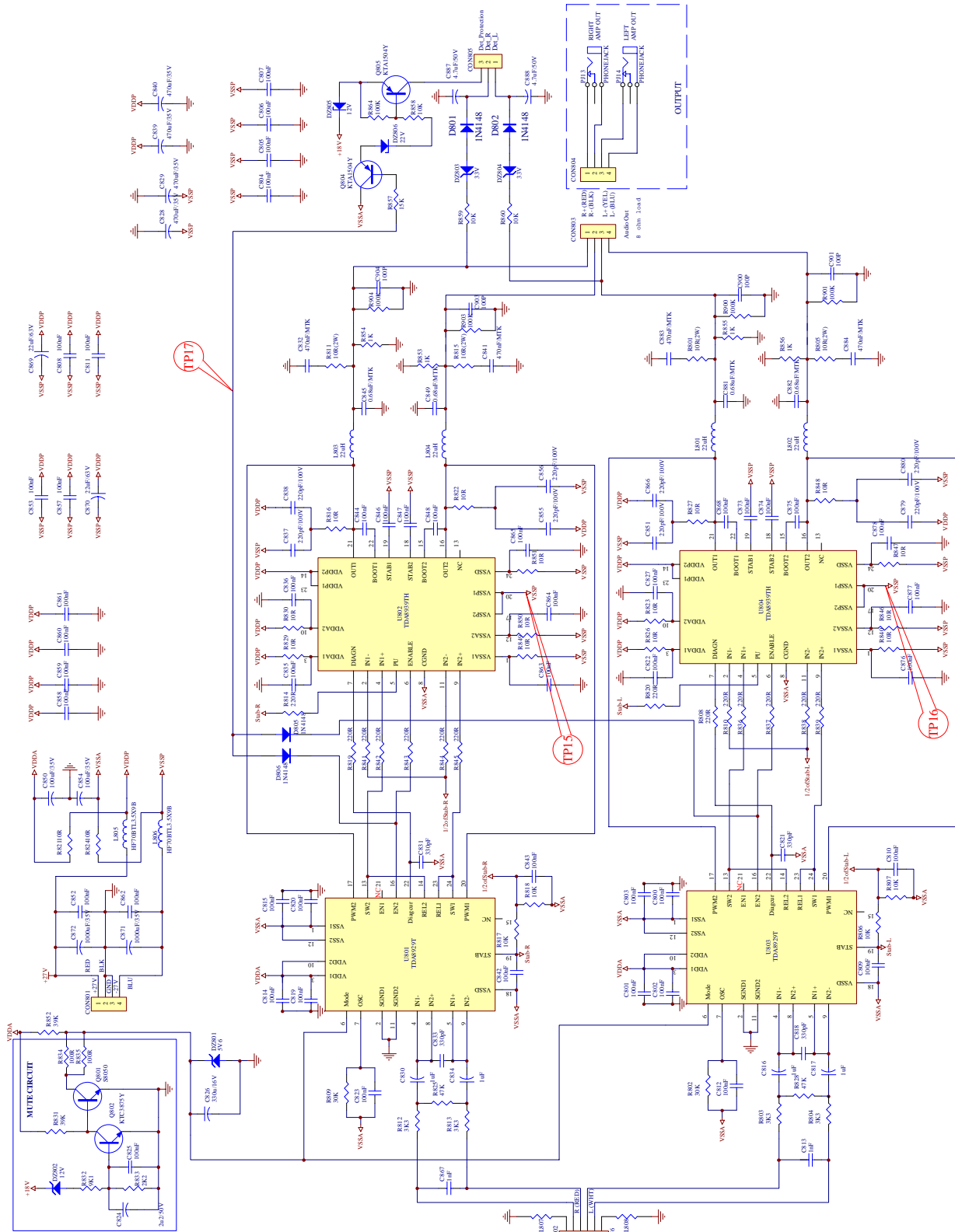
LCD & KEY PCB Component Side



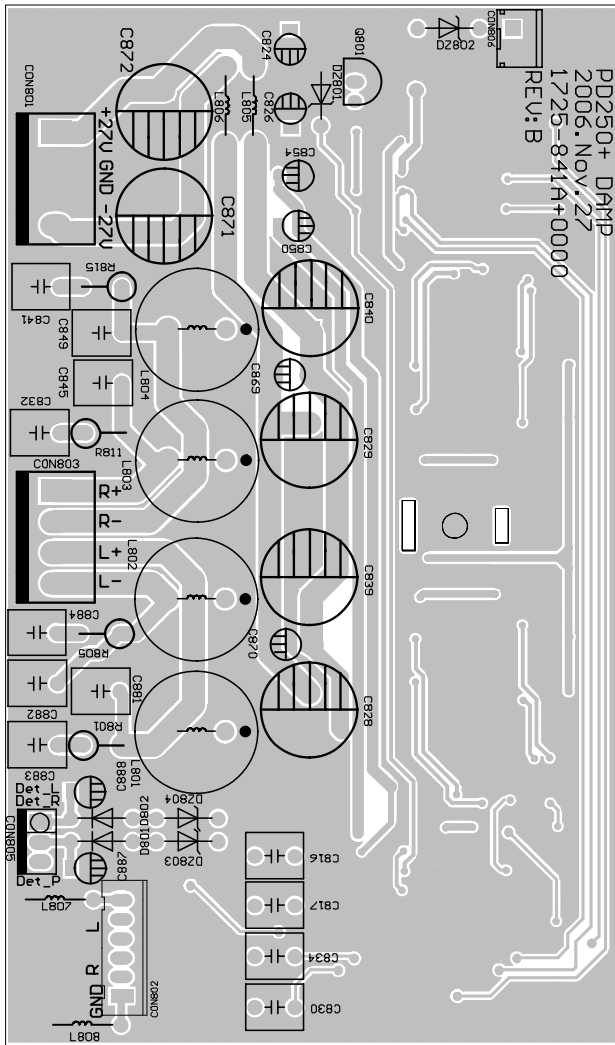
LCD & KEY PCB Copper Side

Fender
 100 plus CD SERVO BOARD
 1725-866A+0001
 Feb 7th, 2007 Rev.:E

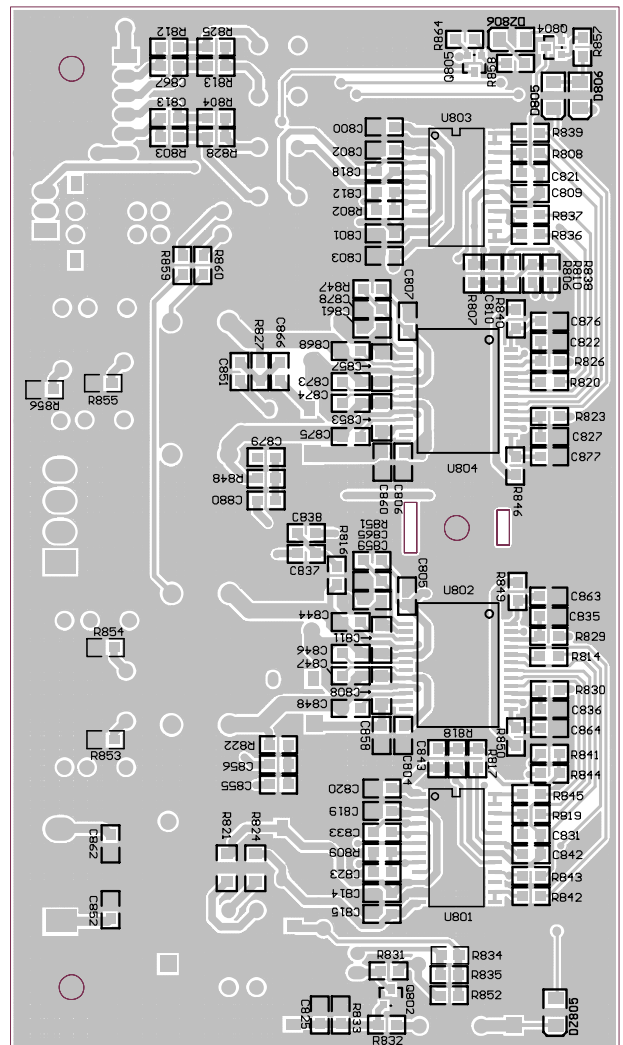
Fender **PASSPORT**
 CD SERVO & LCD & KEY PCB



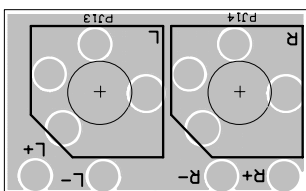
Fender **PASSPORT**
D-AMP Schematic Diagram



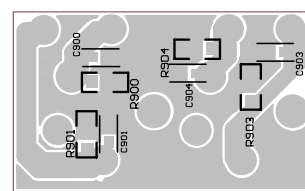
D-Amp PCB Component Side



D-Amp PCB Copper Side

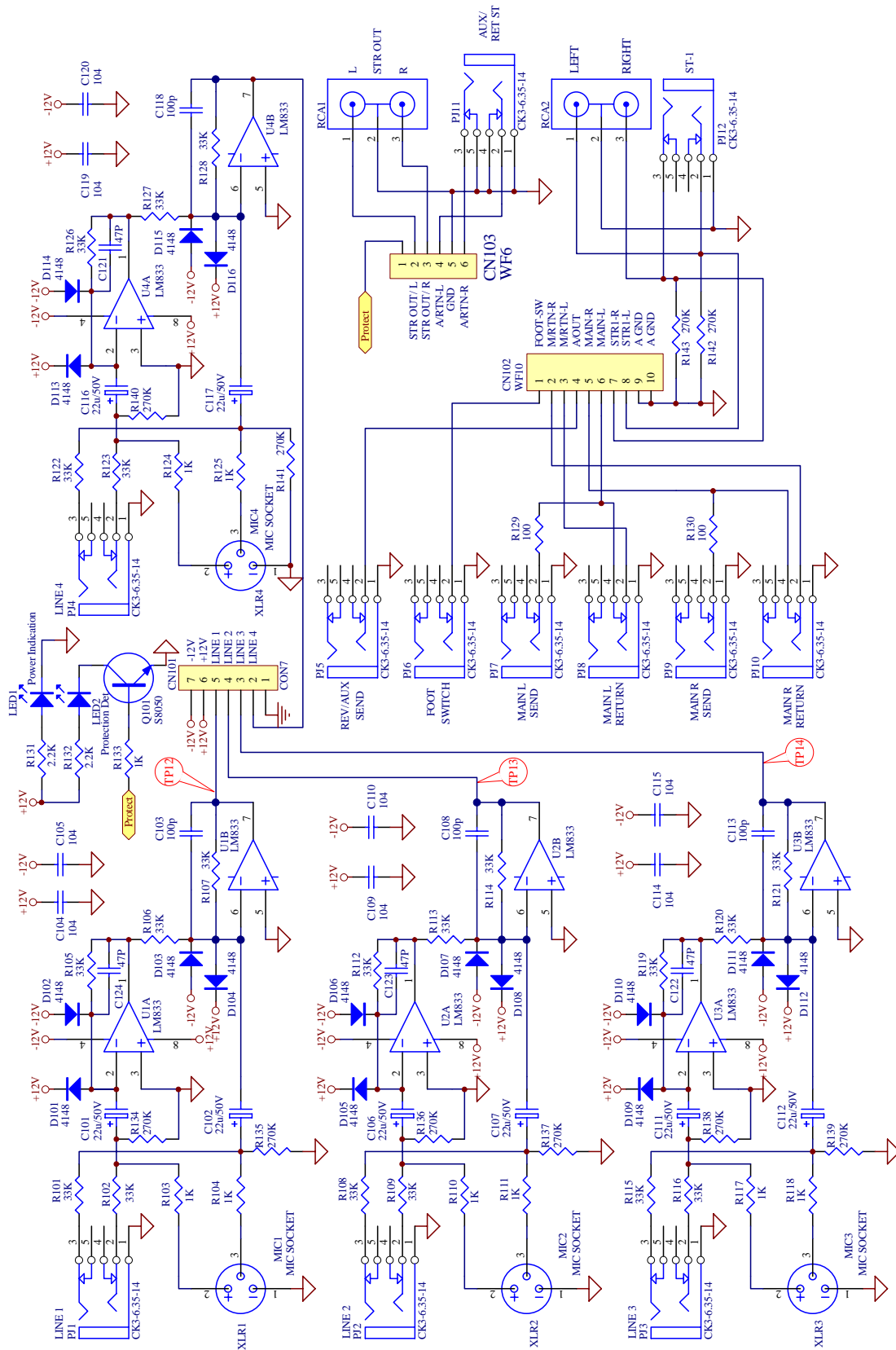


Output PCB Component Side

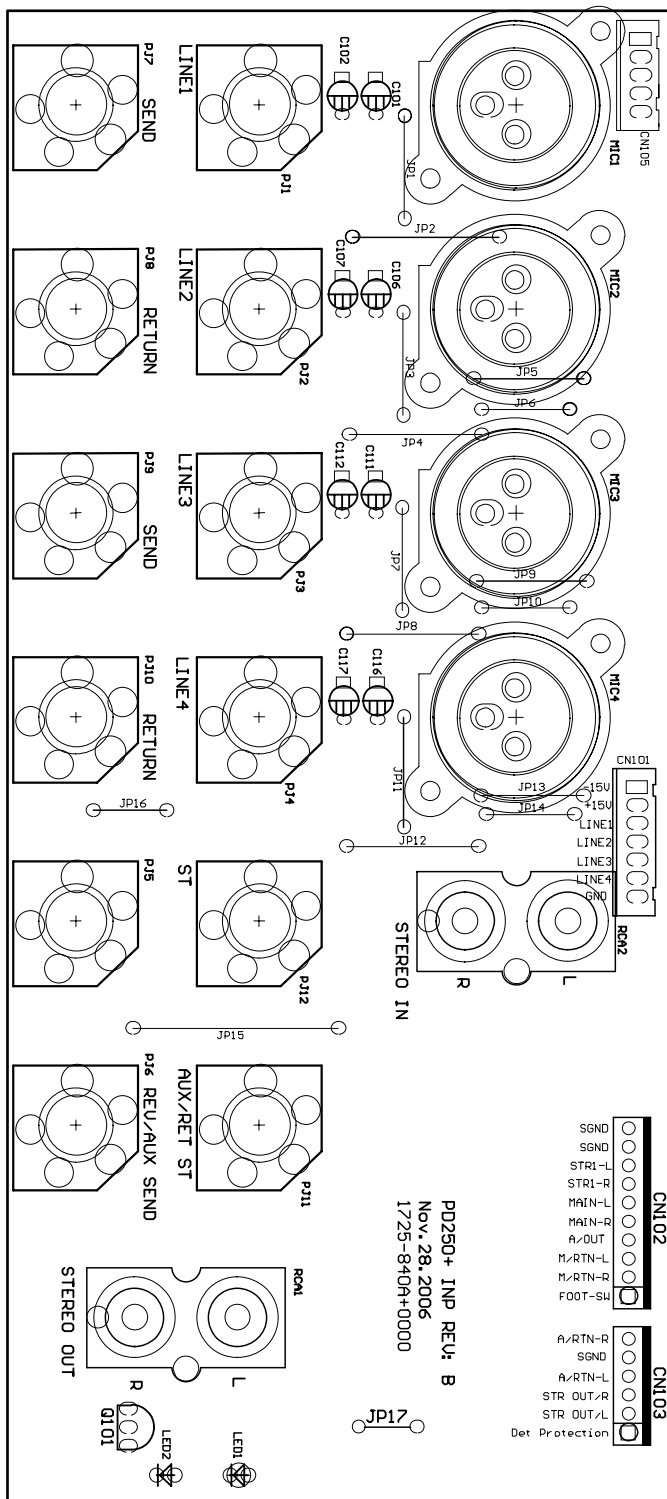


Output PCB Copper Side

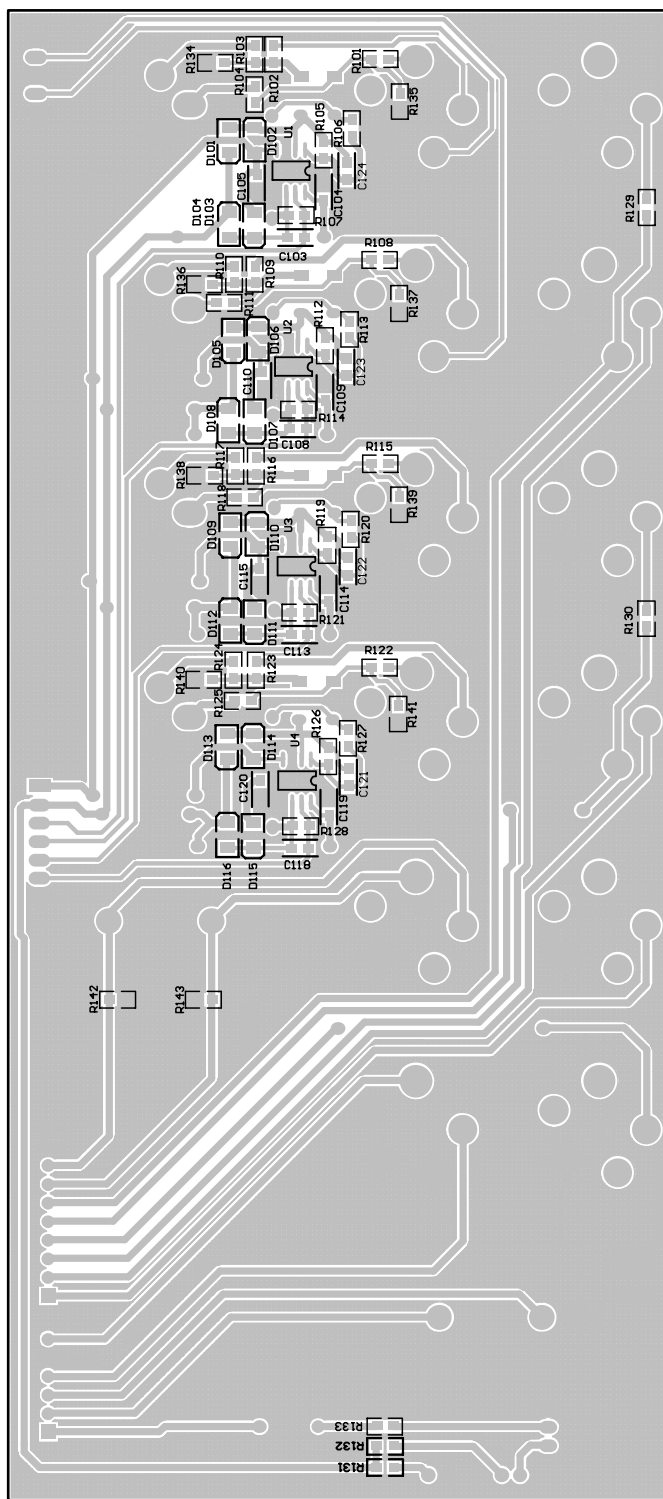
Fender **PASSPORT**
D-AMP & OUTPUT PCB

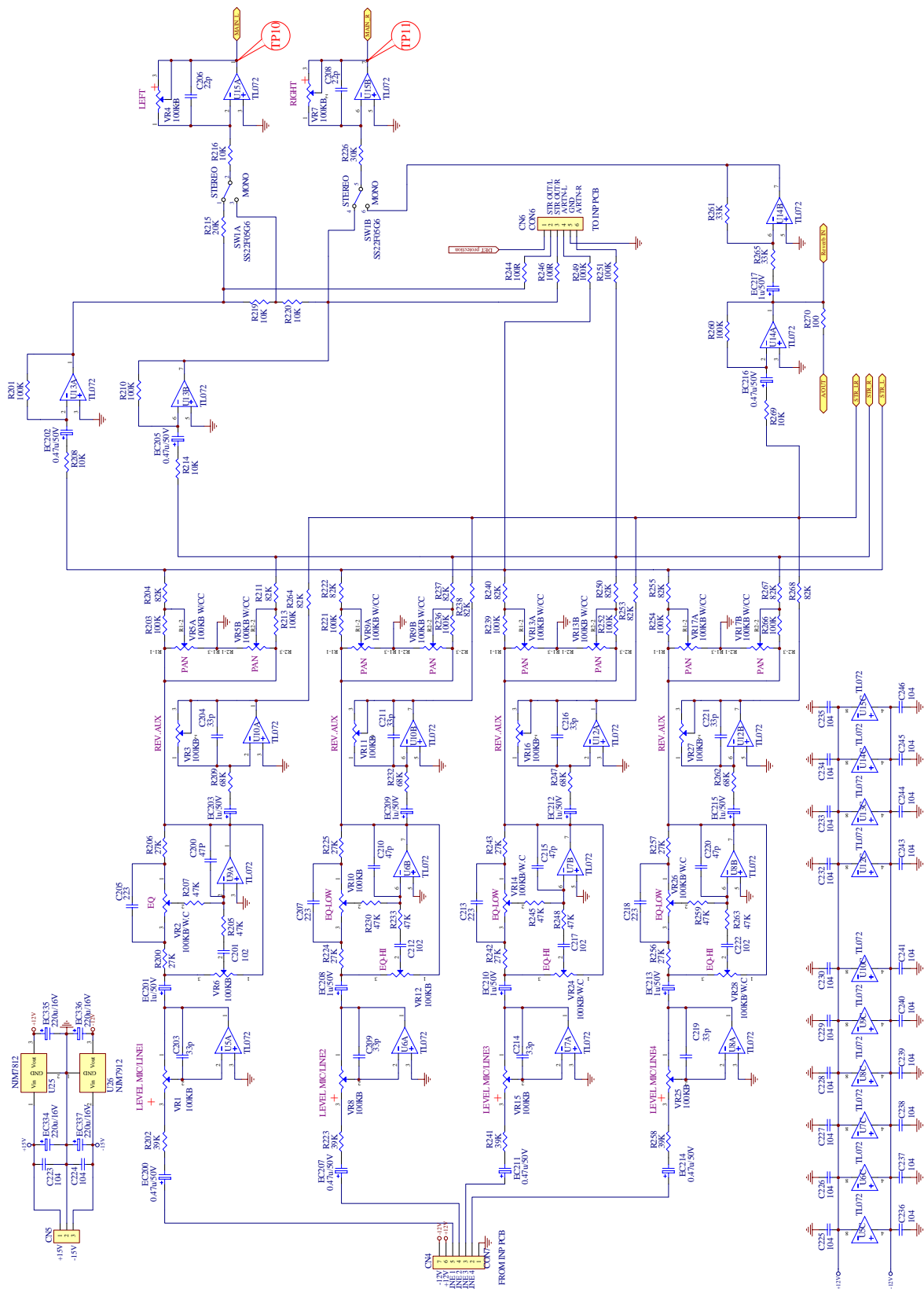


Fender **PASSPORT**
INPUT Schematic Diagram

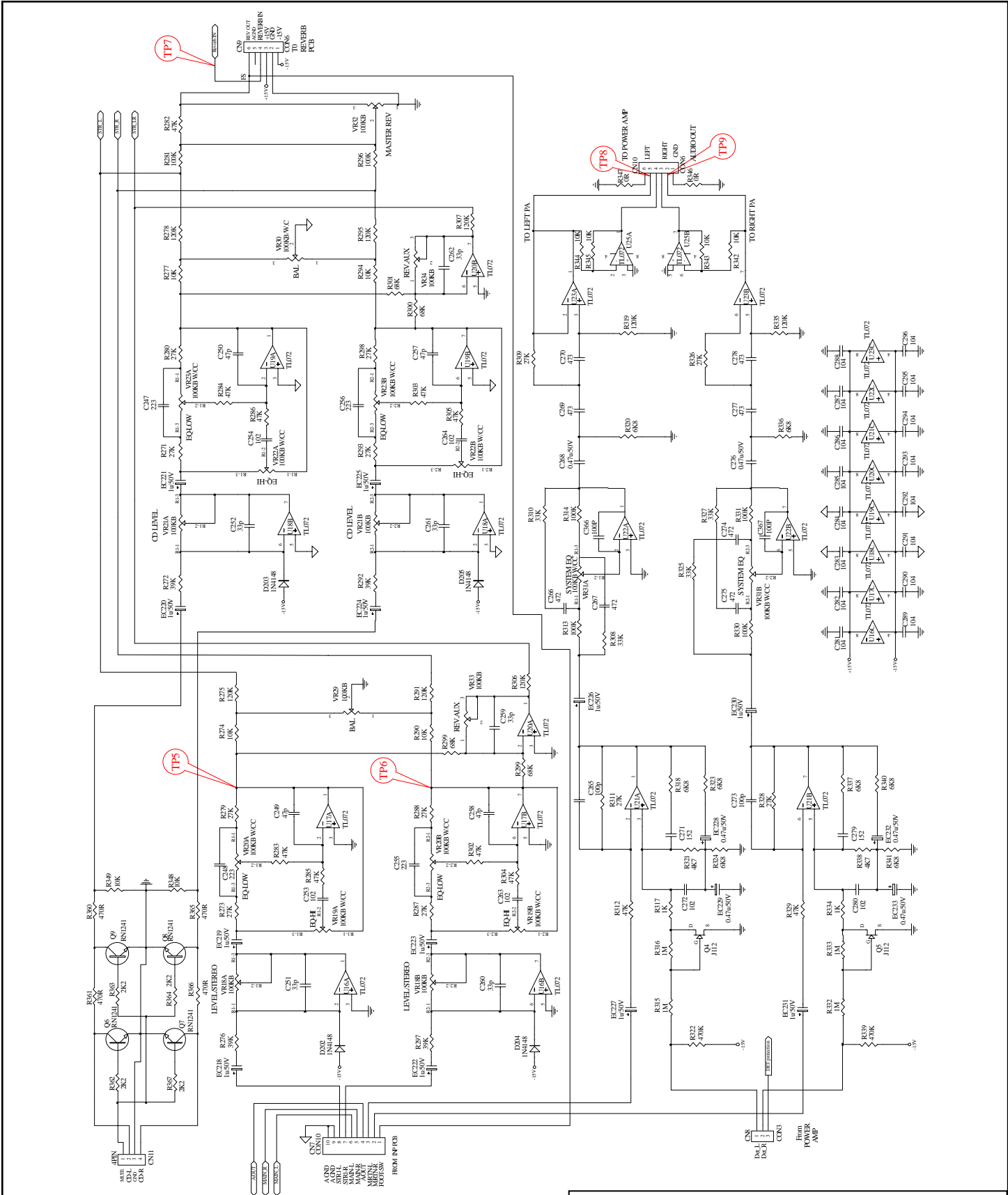


Input PCB Component Side

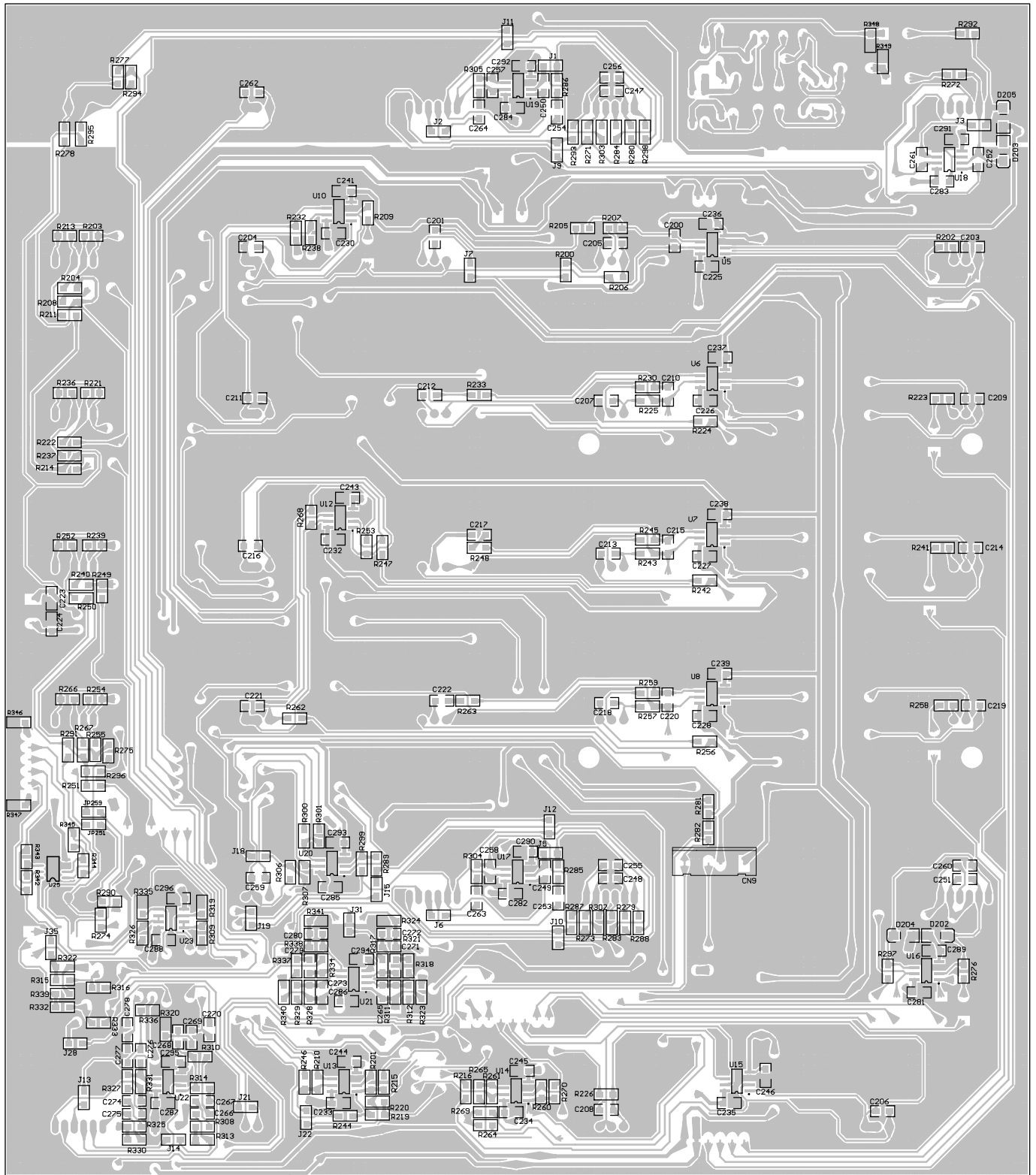




PASSPORT
 MIXER-1 Schematic Diagram



Fender **PASSPORT**
MIXER-2 Schematic Diagram

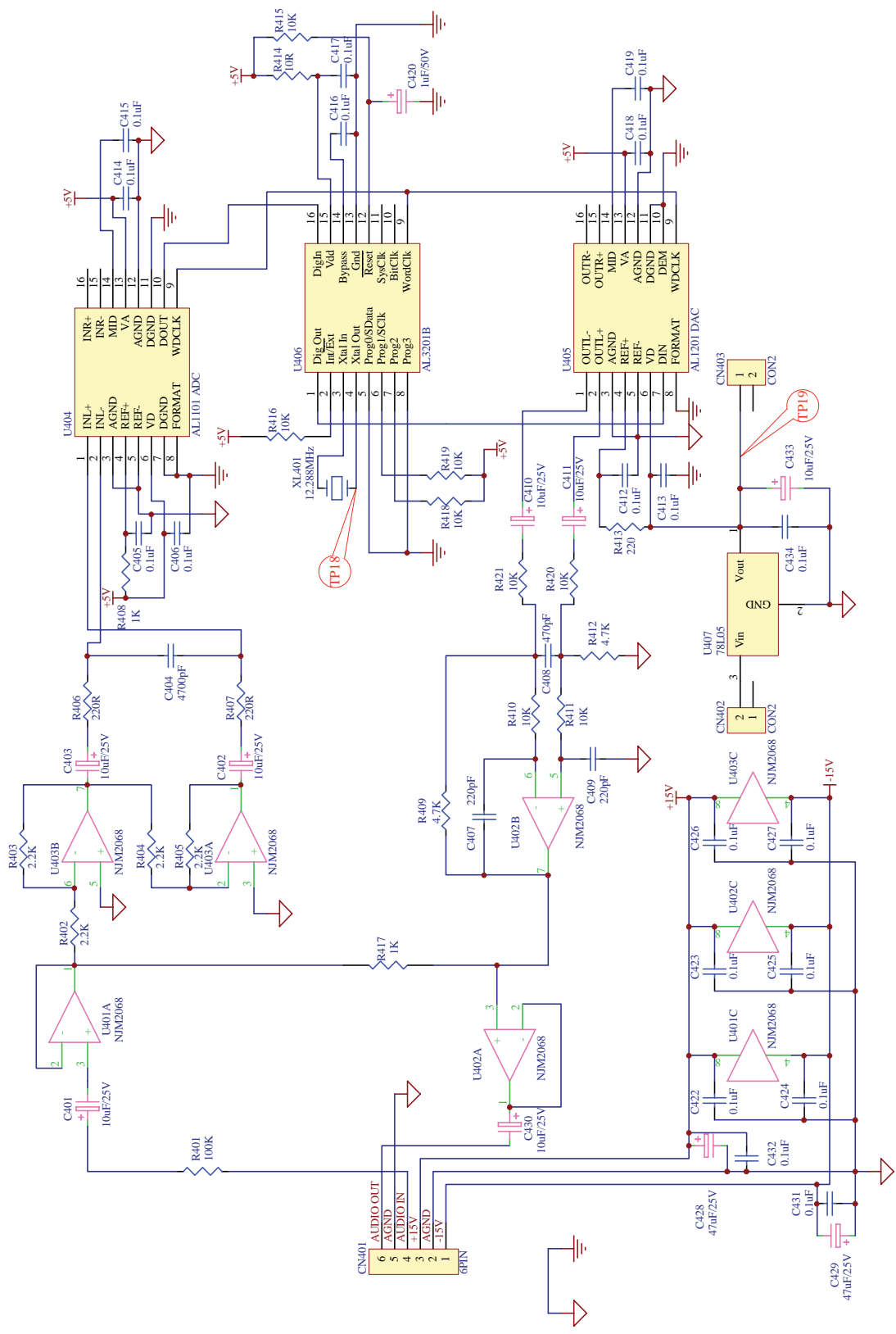


Mixer PCB Copper Side

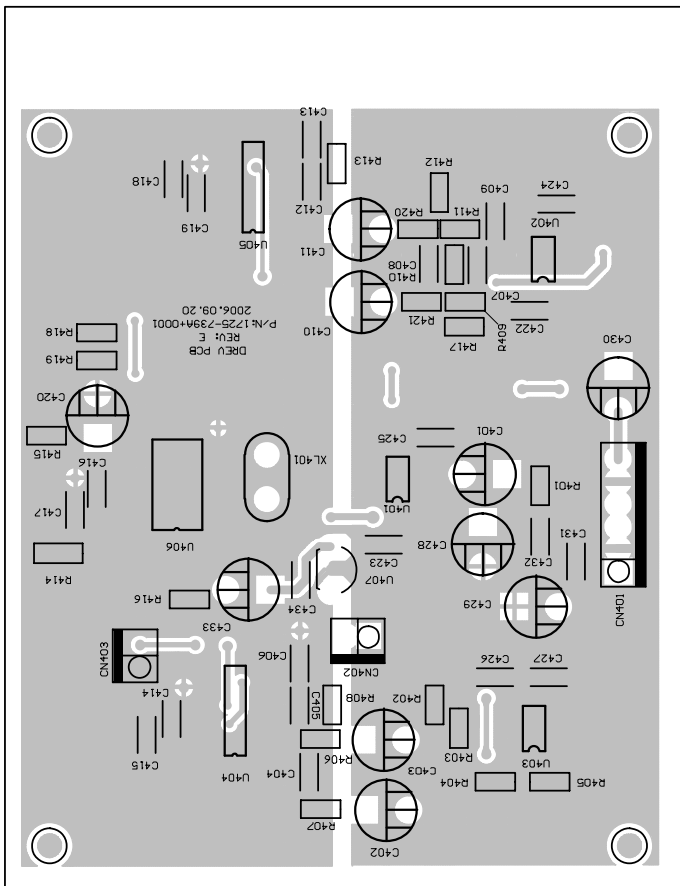
Fender

PASSPORT

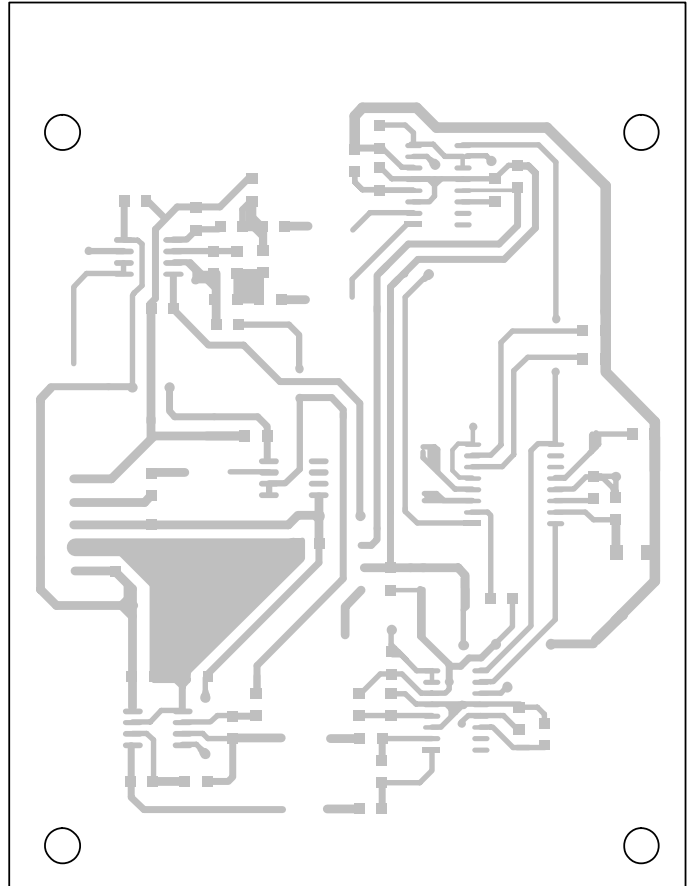
MIXER PCB



Fender PASSPORT
 DSP REVERB Schematic Diagram

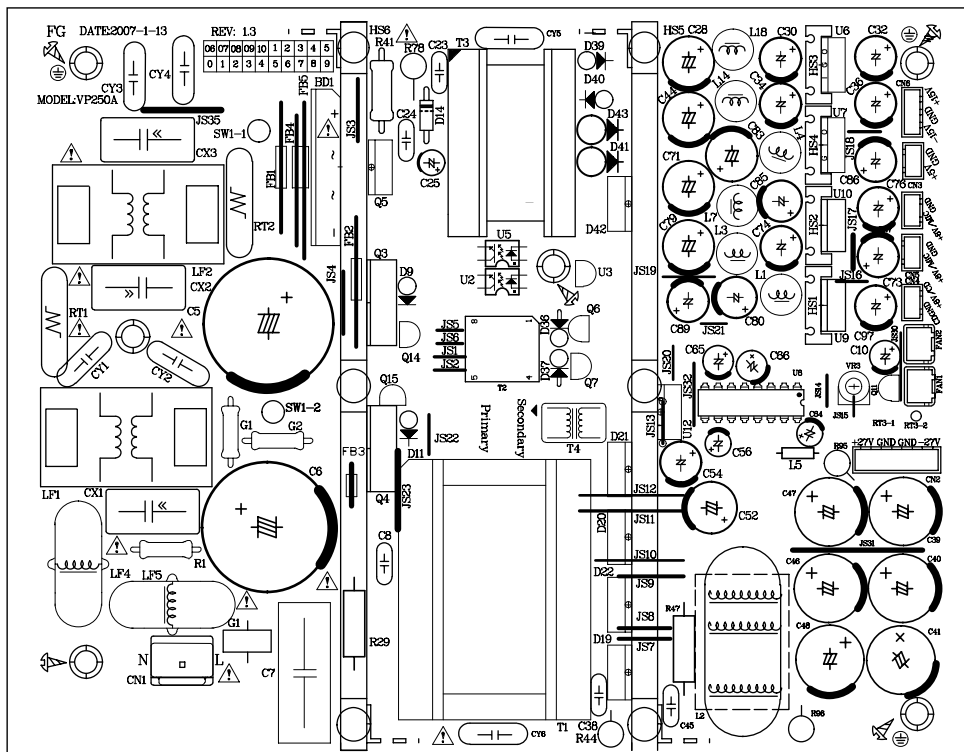


DSP Reverb PCB Component Side

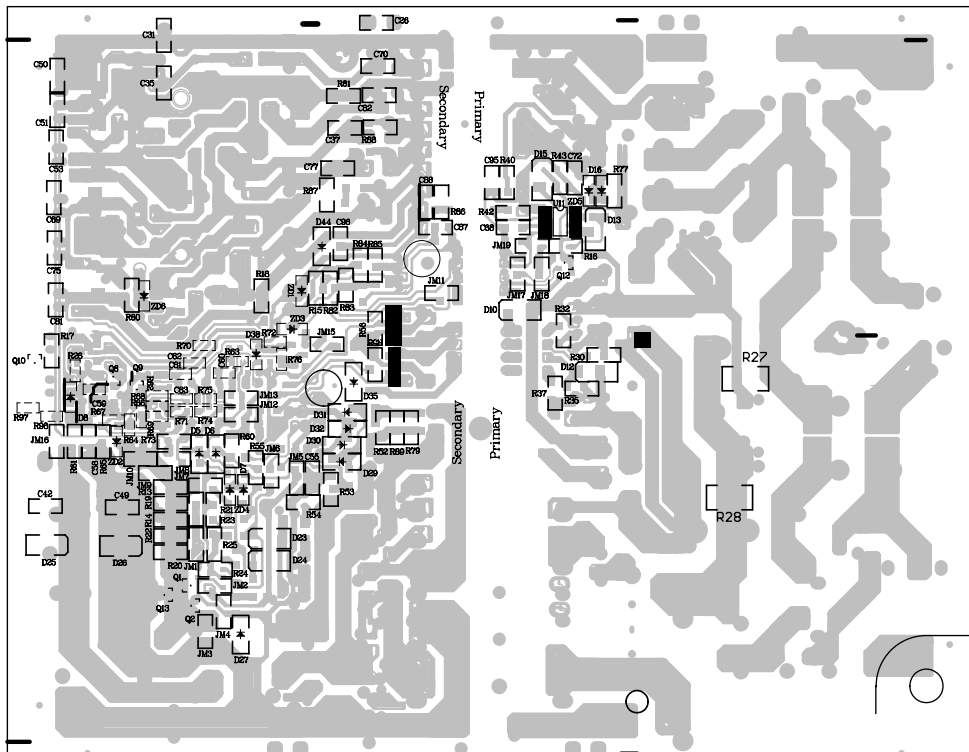


DSP Reverb PCB Copper Side

Fender **PASSPORT**
 DSP REVERB PCB

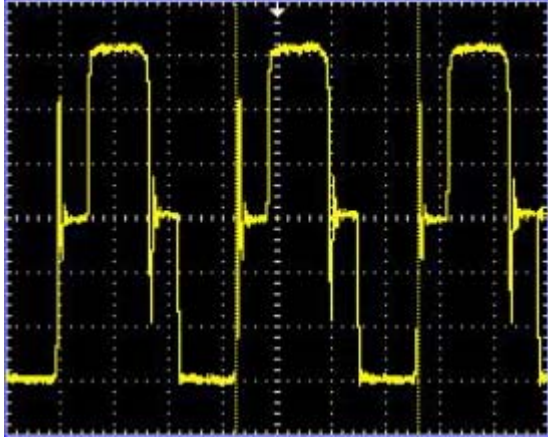
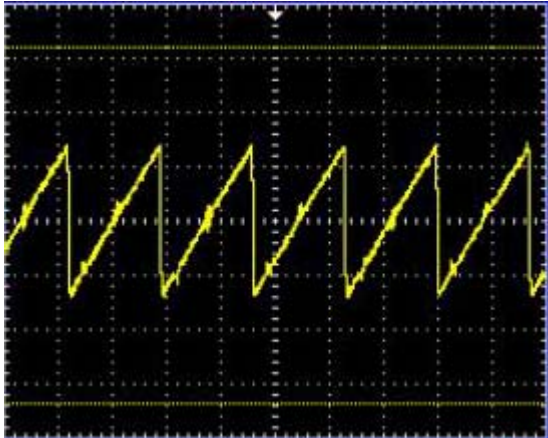
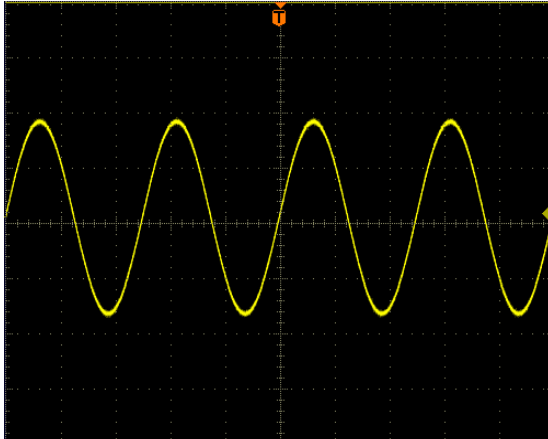



SMPS PCB Component Side



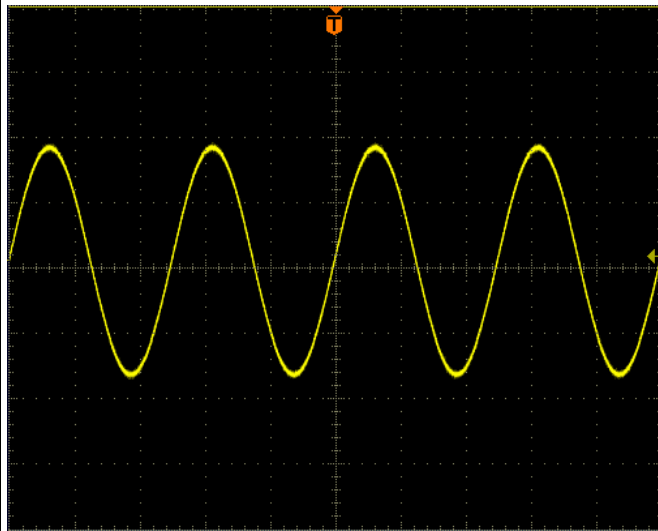
SMPS PCB Copper Side

Fender **PASSPORT**
SMPS PCB

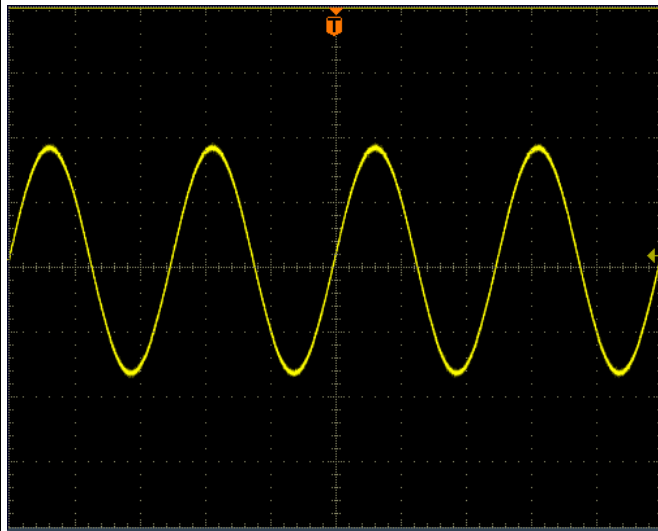
TP1	DC 380V
TP2	DC 300V
TP3	
TP4	
TP5	


PASSPORT
 Test Point Information

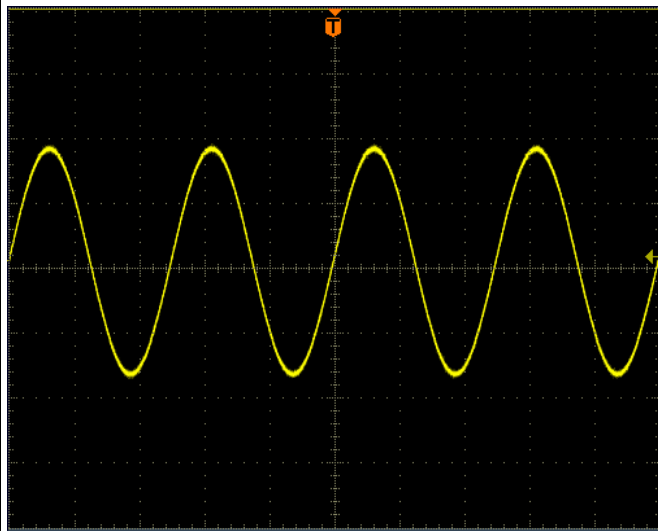
TP6



TP7

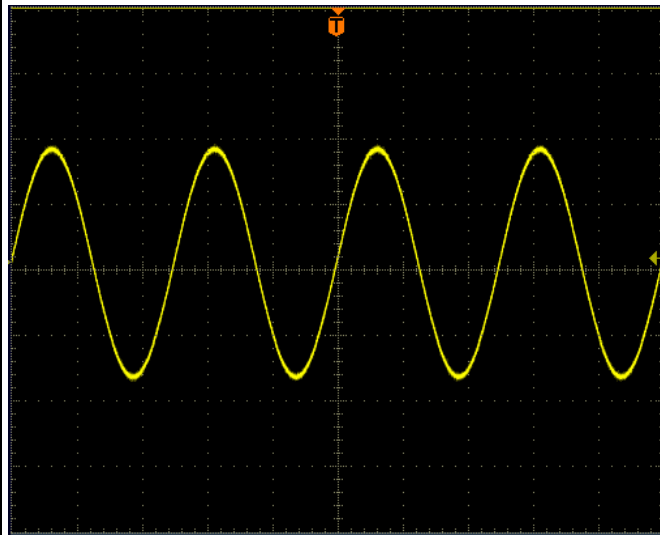


TP8

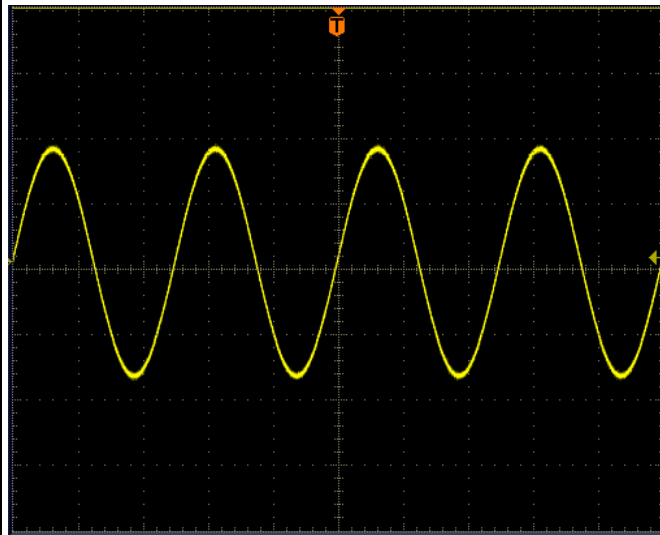


Fender PASSPORT
Test Point Information

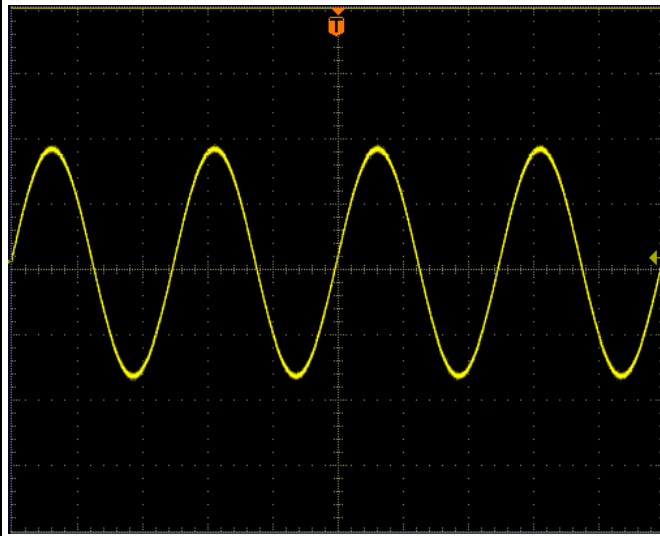
TP9



TP10

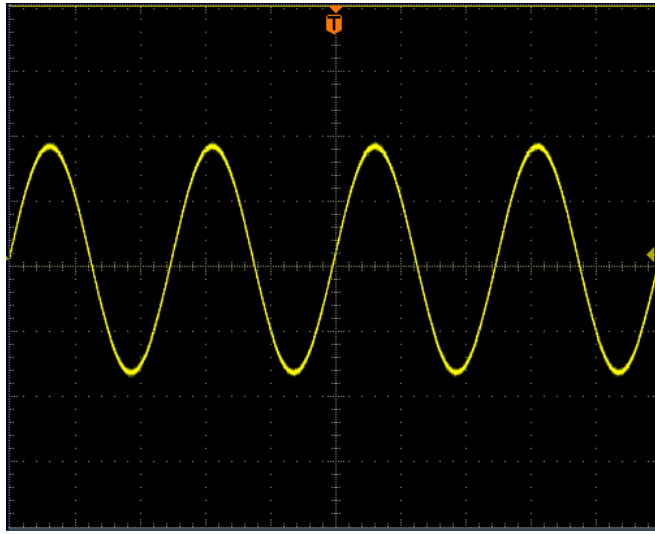


TP11

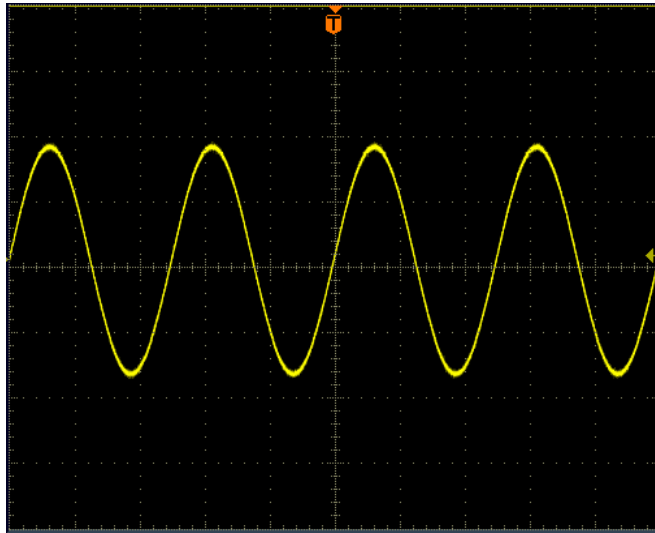


Fender **PASSPORT**
Test Point Information

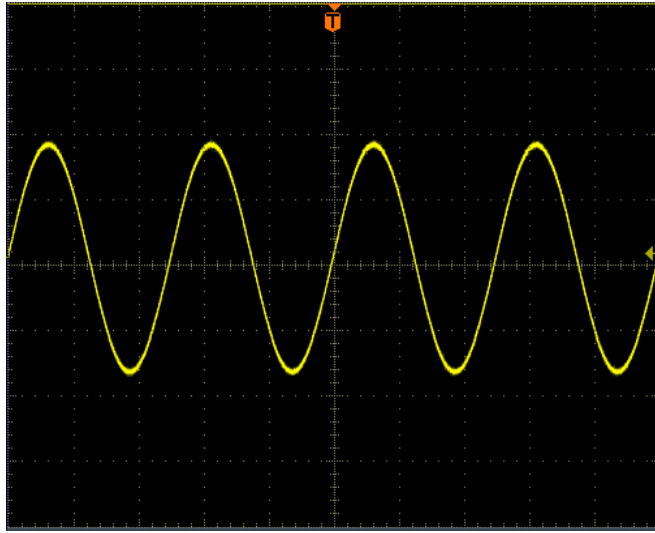
TP12



TP13

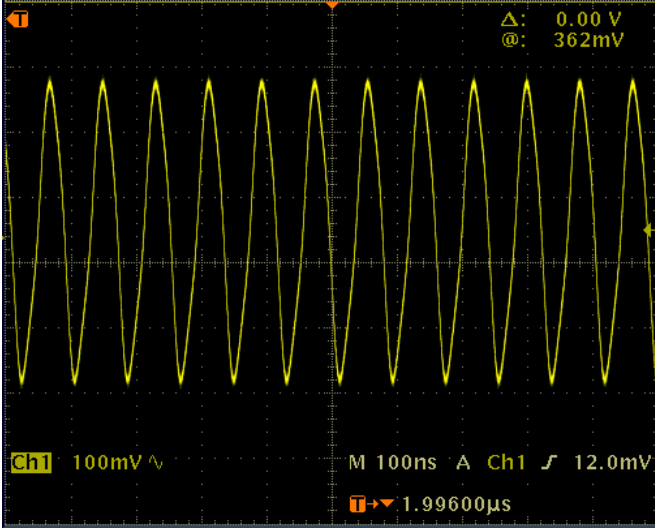
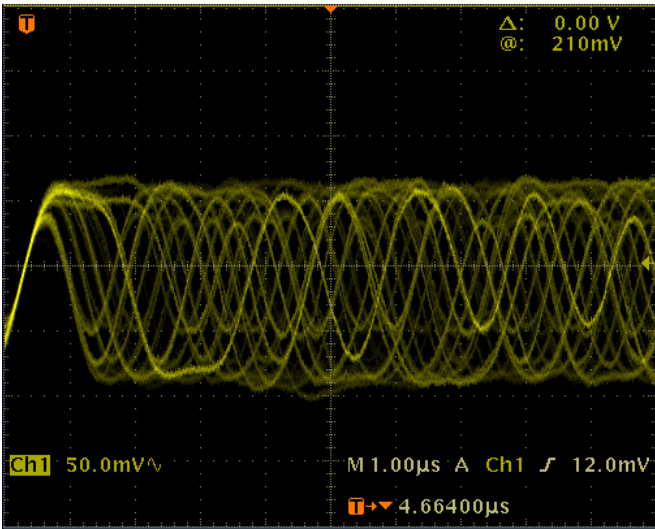


TP14

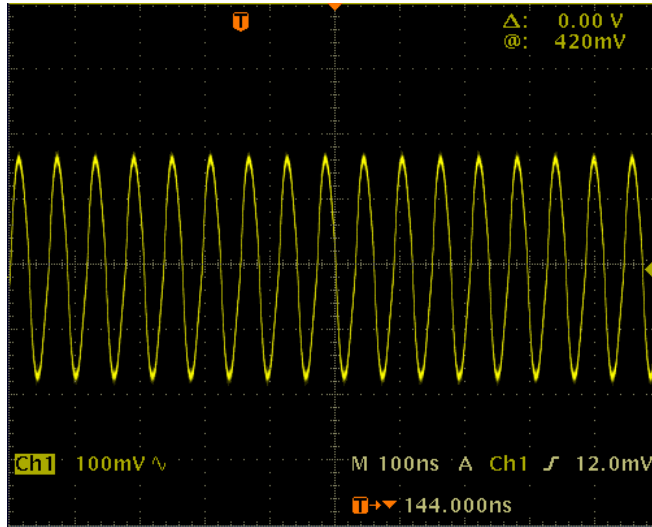


Fender PASSPORT

Test Point Information

TP15	DC 27V
TP16	DC 27V
TP17	DC -20V
TP18	
TP19	DC 5V
TP20	DC 5V
TP21	

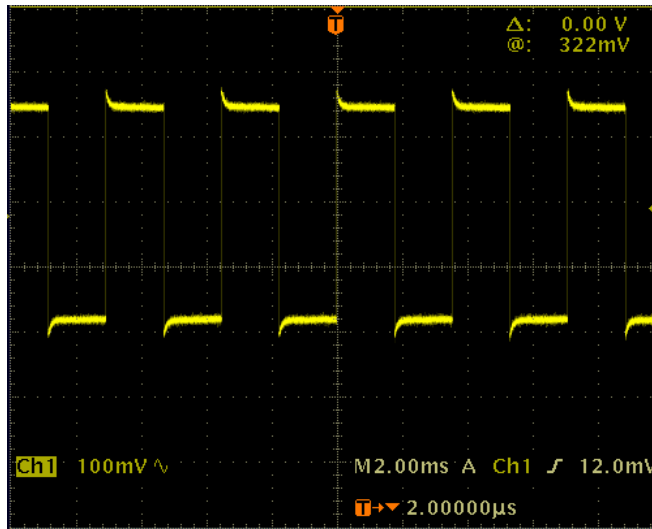
TP22



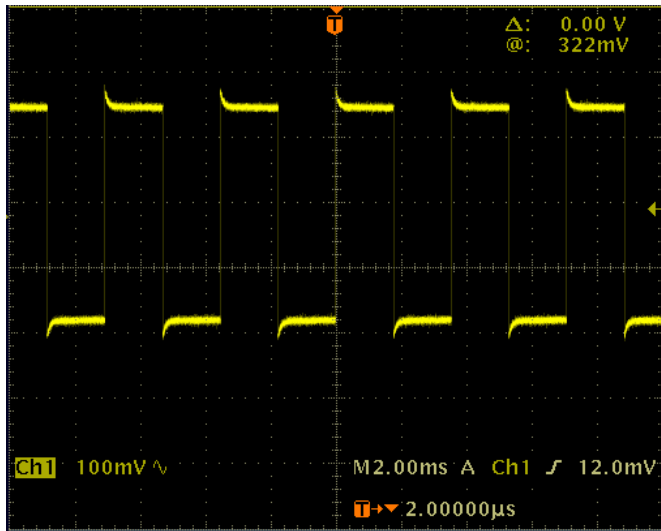
TP23

DC 6V

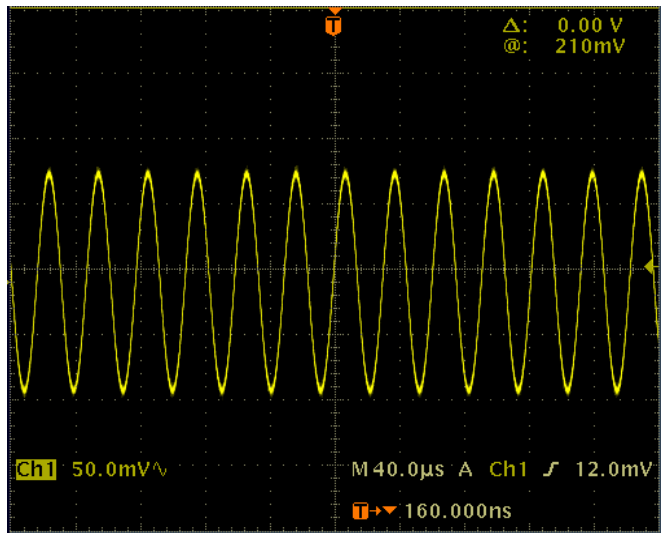
TP24



TP25

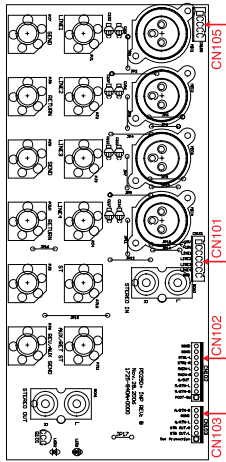


TP26

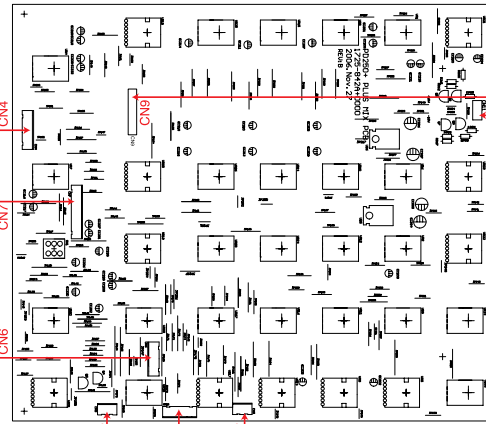


PD-250Plus Wiring Diagram

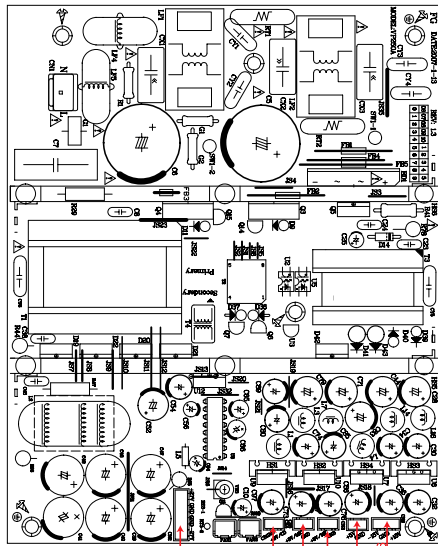
INPUT Board



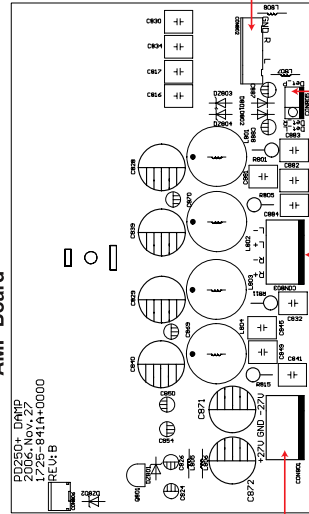
MIXER Board



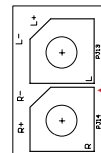
SMPS Board



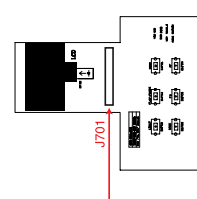
AMP Board



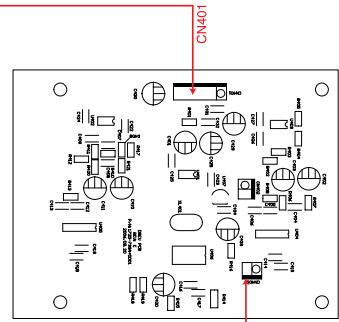
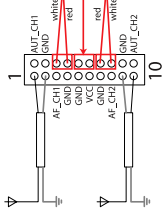
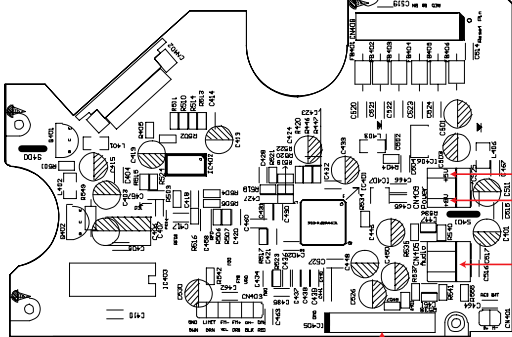
OUTPUT Board



LCD DISPLAY Board



SERVO Board



Fender **PASSPORT**
Wiring Diagram

The following shows the legend of the mating connections

SVC-PD15011+CD			SVC-PD15011+LCD		
CN408	1	MCU RESET	J701	1	MCU RESET
	2	3.3V		2	3.3V
	3	3.3V		3	3.3V
	4	GND		4	GND
	5	GND		5	GND
	6	LOAD+		6	LOAD+
	7	8V		7	8V
	8	LOAD-		8	LOAD-
	9	LOADER SW3		9	LOADER SW3
	10	GND		10	GND
	11	LOADER SW2		11	LOADER SW2
	12	STBY		12	STBY
	13	LOADER SW1		13	LOADER SW1
	14	DATA		14	DATA
	15	GND		15	GND
	16	STBY		16	STBY
	17	GND		17	GND
	18	ACK		18	ACK
	19	GND		19	GND
	20	GND		20	GND
SVC-PD25011+CD			SVC-PD25011+MIX		
CN405	1	R	CN11	1	R
	2	GND		2	GND
	3	GND		3	GND
	4	L			L
SVC-PD25011+DAMP			SVC-PD25011+SMPS		
CON801	1	27V	CN2	1	27V
	2	GND		2	GND
	3	GND		3	GND
	4	-27V			-27V
SVC-PD25011+CD			SVC-PD25011+SMPS		
CN409	1	5V	CN3	1	5V
	2	GND		2	GND
	3	GND	CN4	3	GND
	4	8V		4	8V
SVC-PD25011-MIXER			SVC-PD25011+SMPS		
CN5	1	15V	CN6	1	15V
	2	GND		2	GND
	3	GND		3	GND
	4	-15V		4	-15V
SVC-PD25011+DAMP			SVC-PD25011+MIXER		
CON802	1	GND	CN10	1	GND
	2	R+		2	R+
	3	R-		3	R-
	4	L+		4	L+
	5	L-		5	L-

Fender

PASSPORT

Wiring Diagram

	6	GND		6	GND
SVC-PD25011+DAMP			SVC-PD25011+MIXER		
CON805	1	DET-L	CN8	1	DET-L
	2	DET-R		2	DET-R
	3	DET-P		3	DET-P
SVC-PD25011+MIXER			SVC-PD25011+DREV		
CN9	1	15V	CN401	1	15V
	2	GND		2	GND
	3	-15V		3	-15V
	4	INPUT		4	INPUT
	5	GND		5	GND
	6	OUTPUT		6	OUTPUT
SVC-PD25011+DREV			SVC-PD25011+SMPS		
CN403	1	GND	CN7	1	GND
	2	8V		2	8V
SVC-PD25011+MIXER			SVC-PD25011+INPUT		
CN4	1	15V	CN101	1	15V
	2	-15V		2	-15V
	3	LINE1		3	LINE1
	4	LINE2		4	LINE2
	5	LINE3		5	LINE3
	6	LINE4		6	LINE4
	7	GND		7	GND
SVC-PD25011+MIXER			SVC-PD25011+INPUT		
CN7	1	GND	CN102	1	GND
	2	GND		2	GND
	3	L		3	L
	4	R		4	R
	5	MAIN-L		5	MAIN-L
	6	MAIN-R		6	MAIN-R
	7	OUTPUT		7	OUTPUT
	8	L		8	L
	9	R		9	R
	10	FOOT SW		10	FOOT SW
SVC-PD25011+MIXER			SVC-PD25011+INPUT		
CN6	1	RTN-R	CN103	1	RTN-R
	2	GND		2	GND
	3	RTN-L		3	RTN-L
	4	R OUT		4	R OUT
	5	L OUT		5	L OUT
	6	DET		6	DET

Fender

PASSPORT

Wiring Diagram