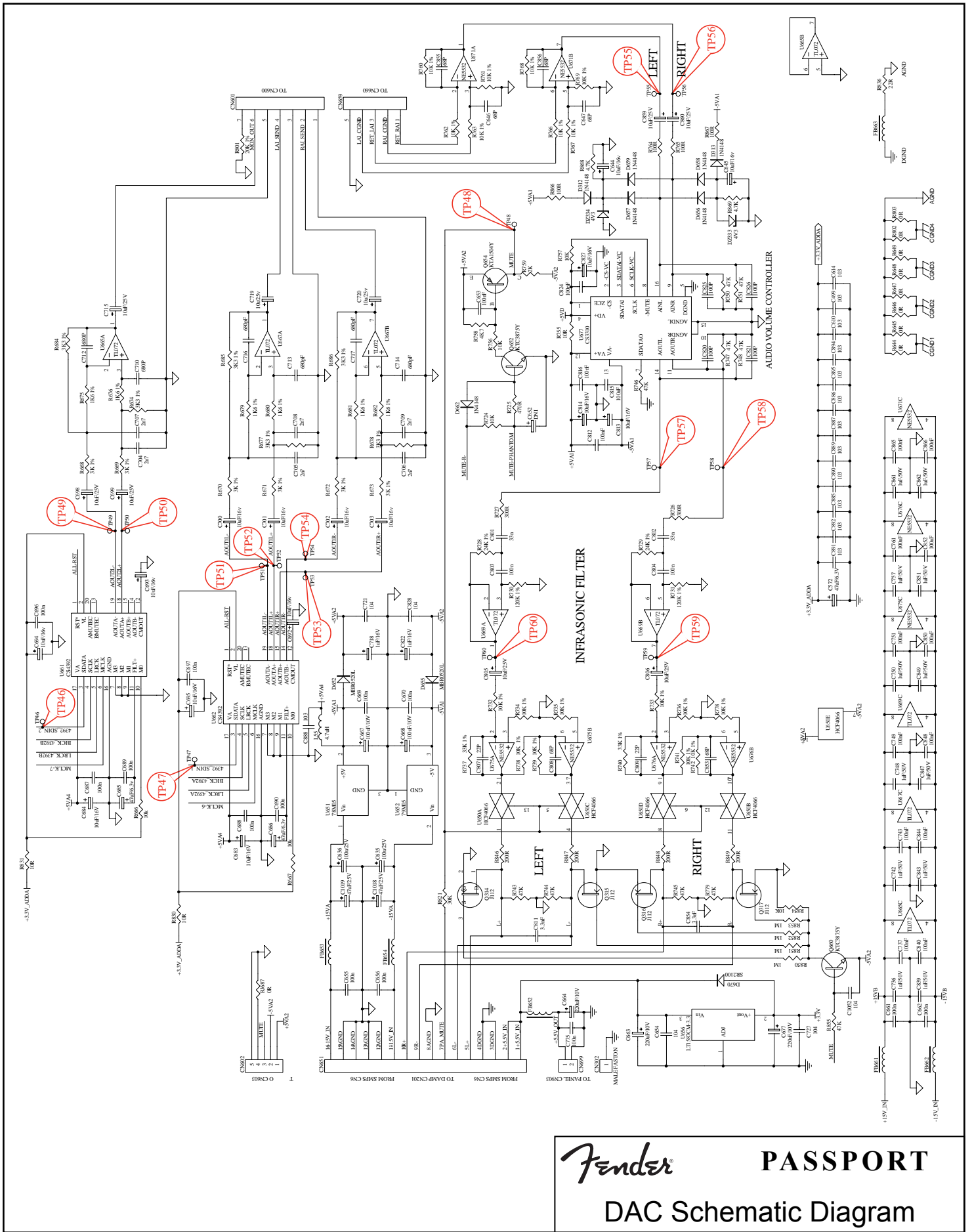
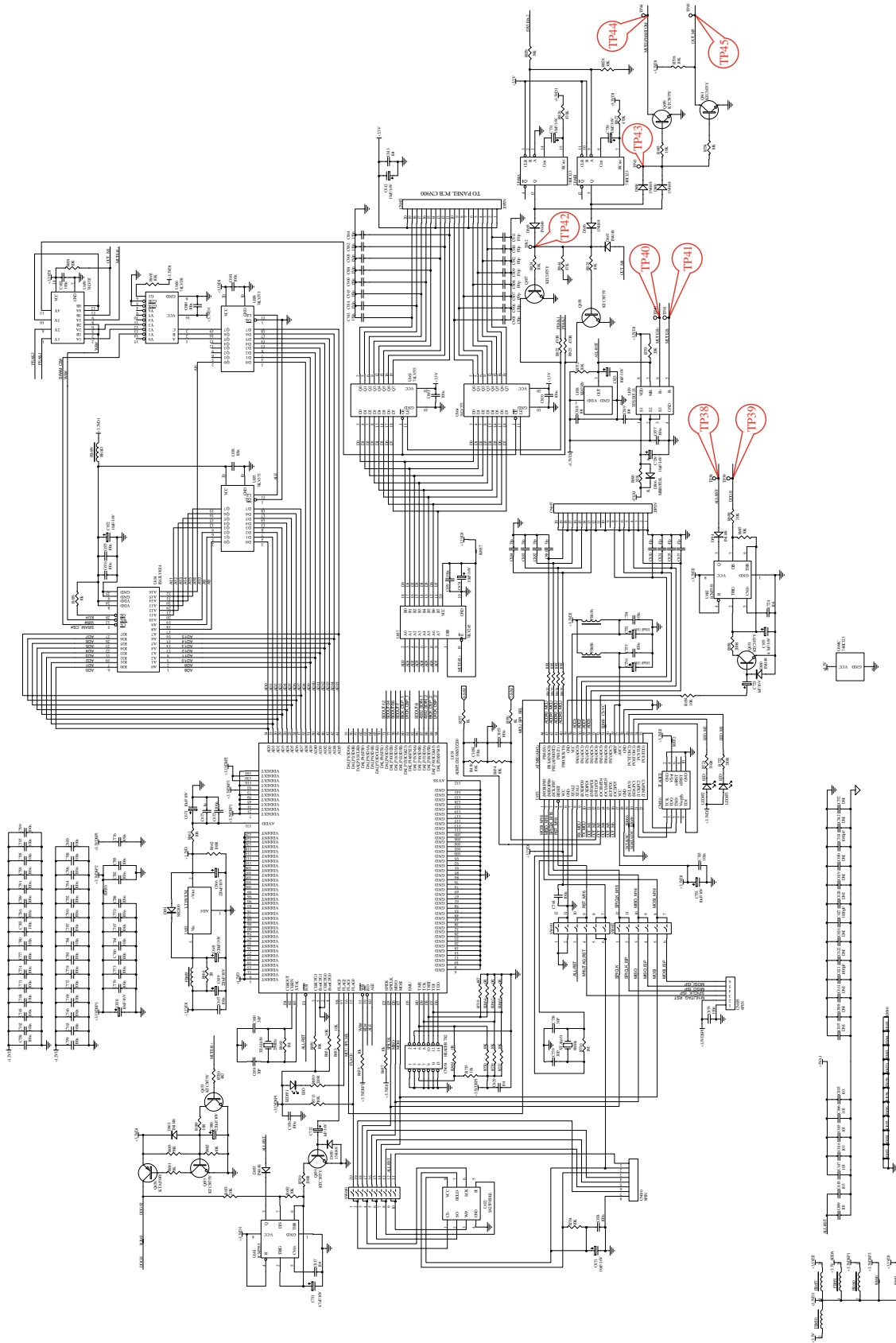


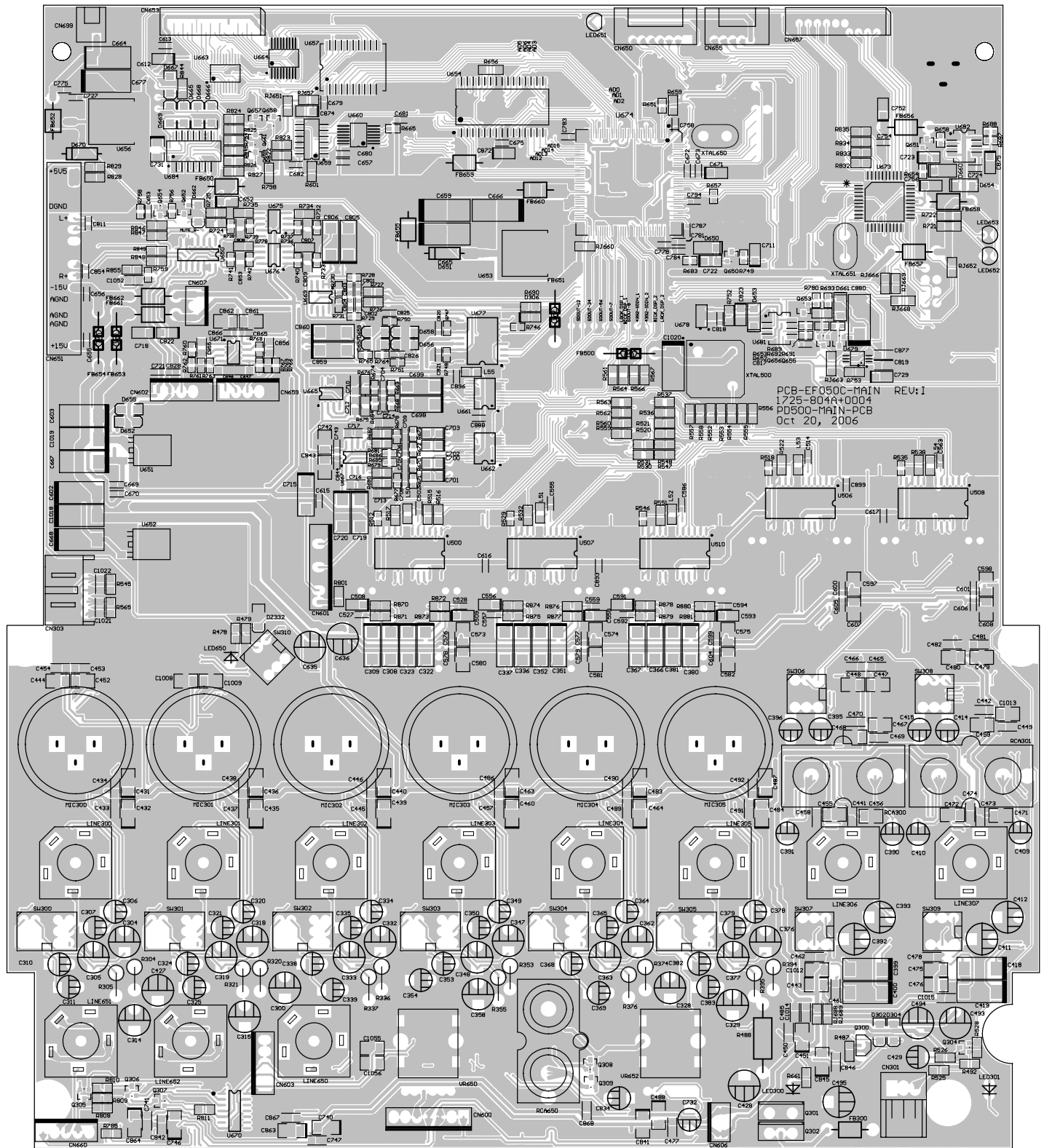
Fender PASSPORT
ADC Schematic Diagram



Fender **PASSPORT**
DAC Schematic Diagram

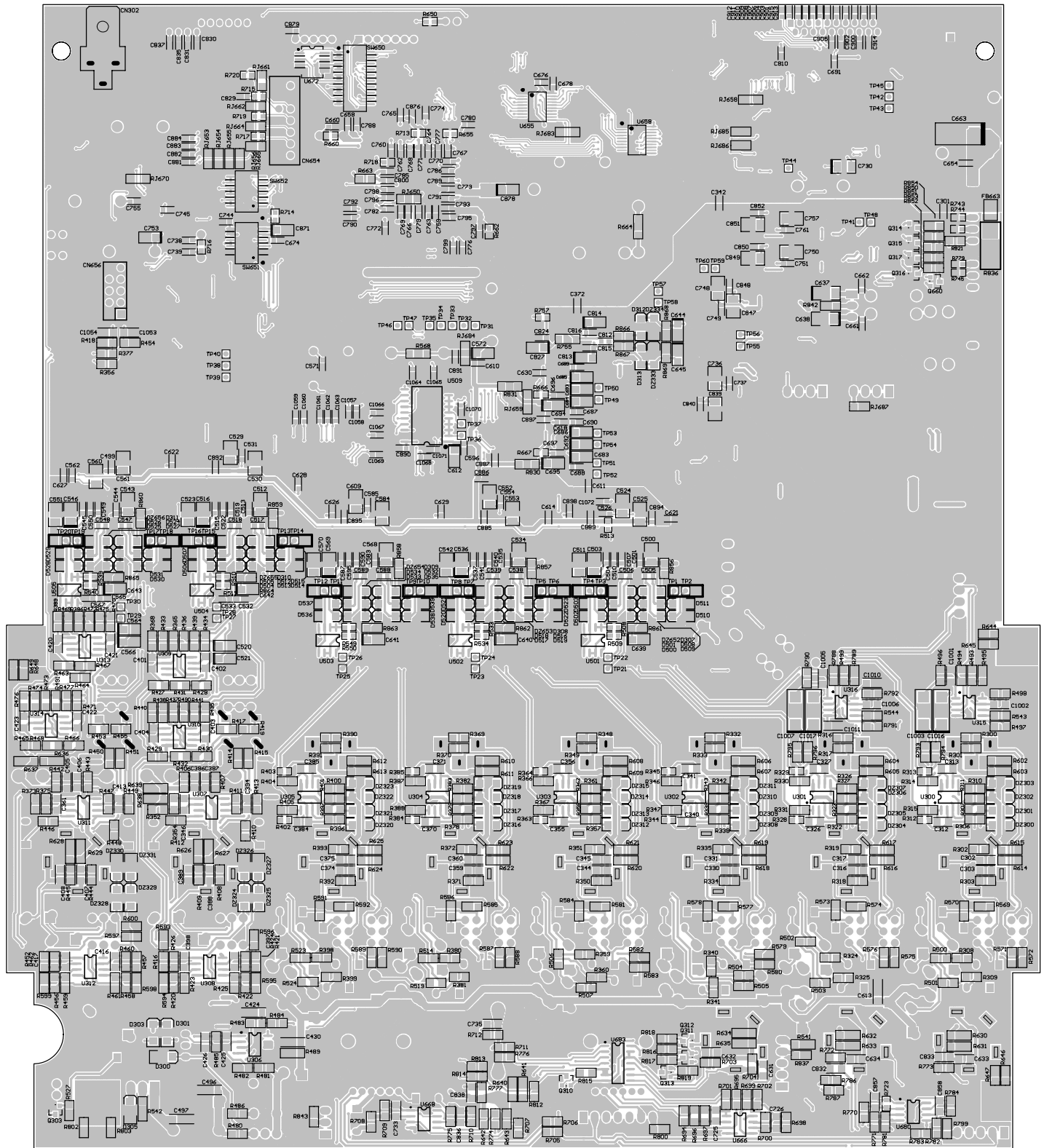


Fender **PASSPORT**
 DSP Schematic Diagram



Main PCB Component Side

Fender **PASSPORT**
MAIN PCB

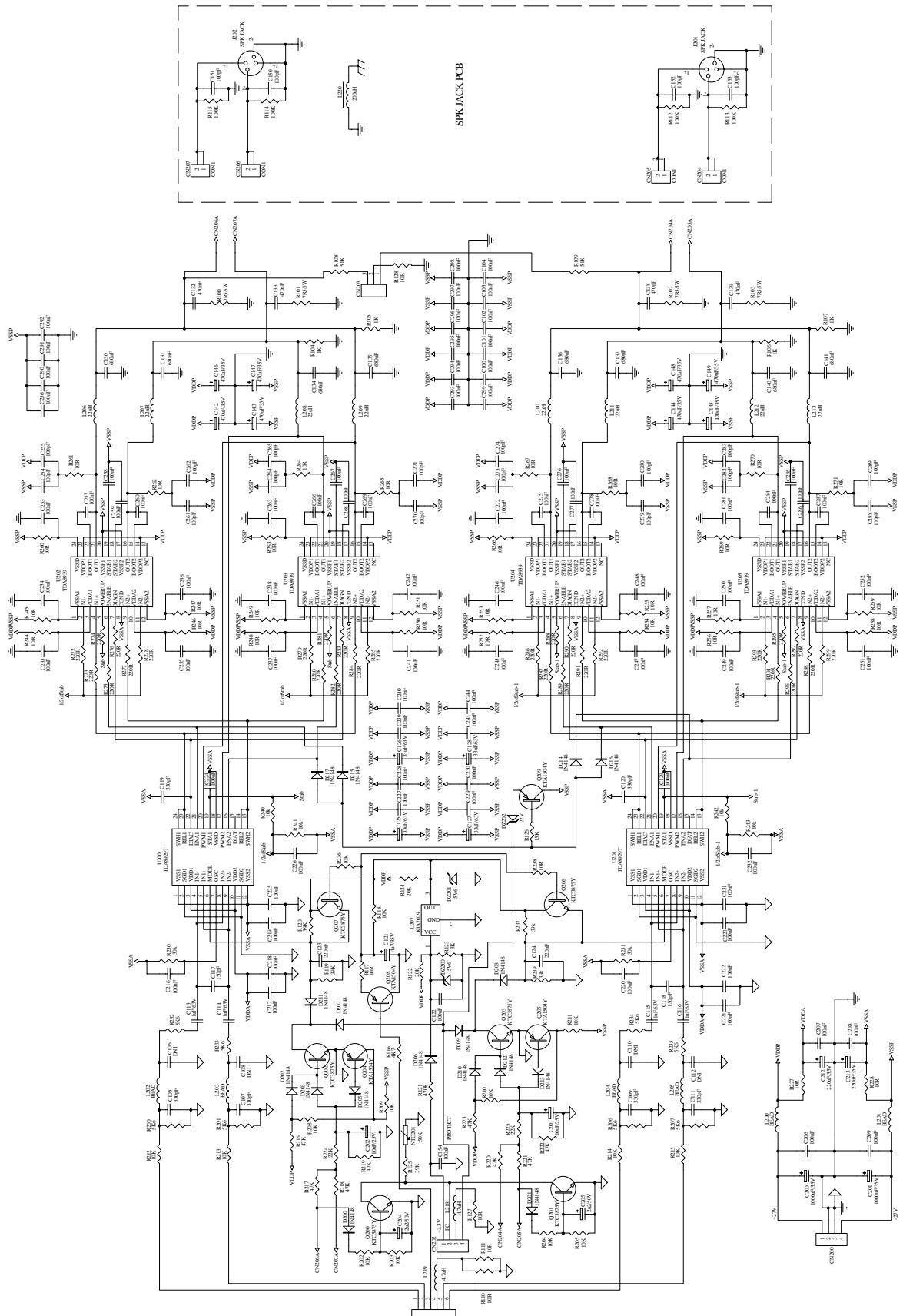


Main PCB Copper Side

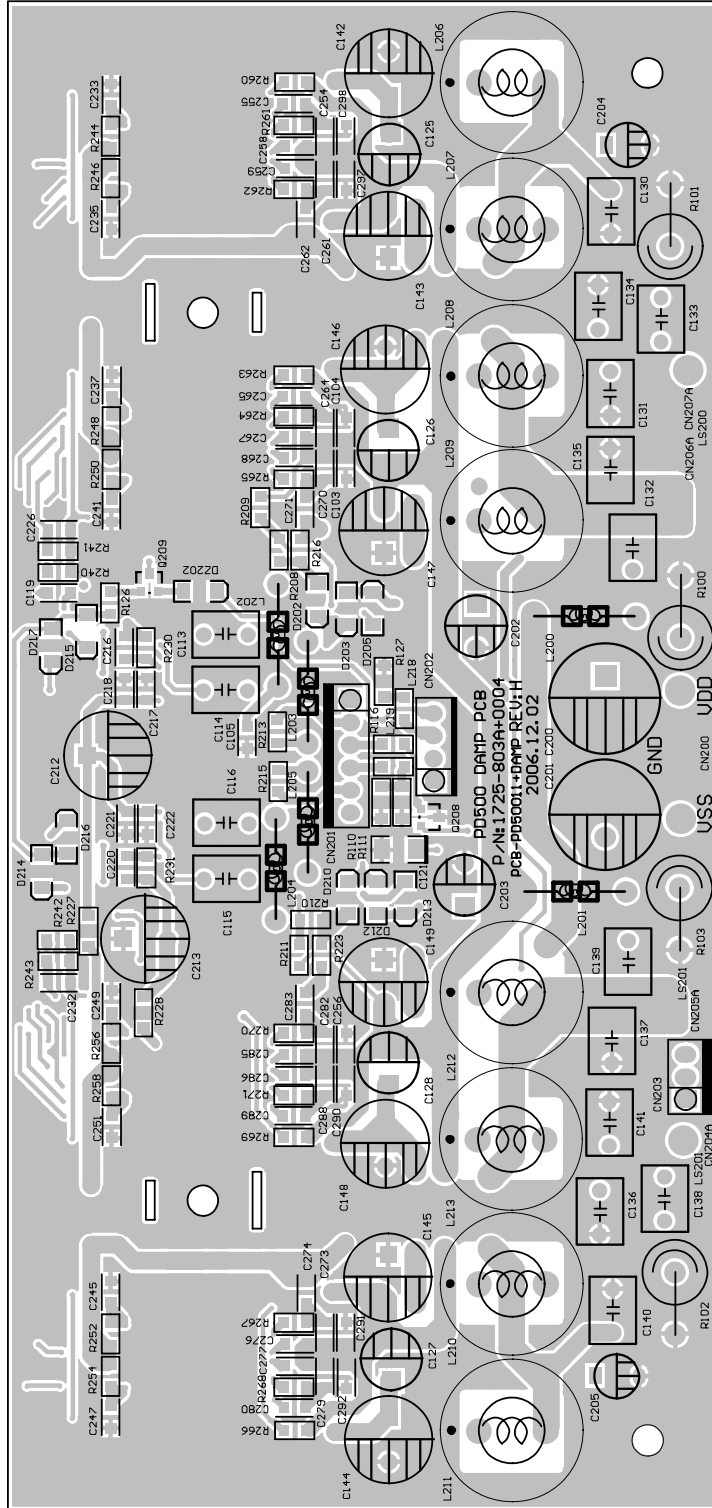
Fender

PASSPORT

MAIN PCB

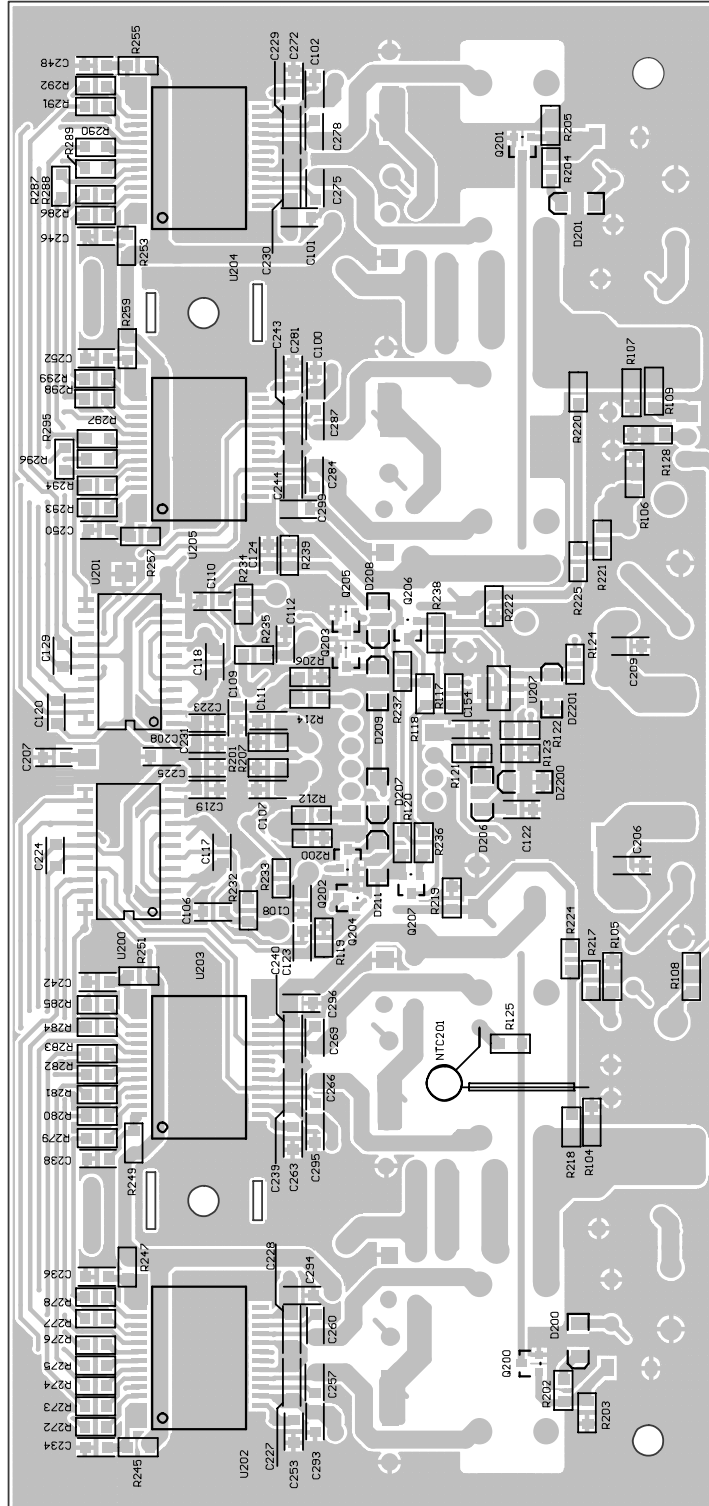


Fender **PASSPORT**
D-AMP Schematic Diagram



D-Amp PCB Component Side

Fender **PASSPORT**
D-AMP PCB

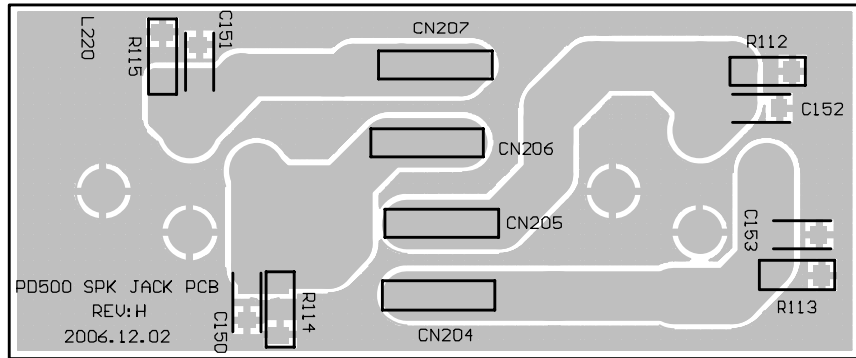


D-Amp PCB Copper Side

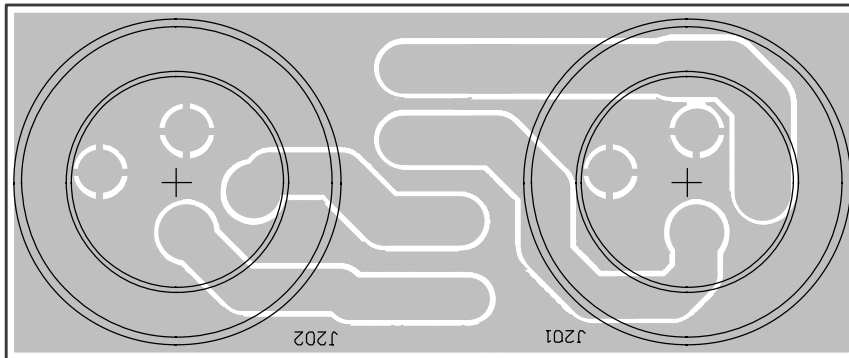
Fender

PASSPORT

D-AMP PCB

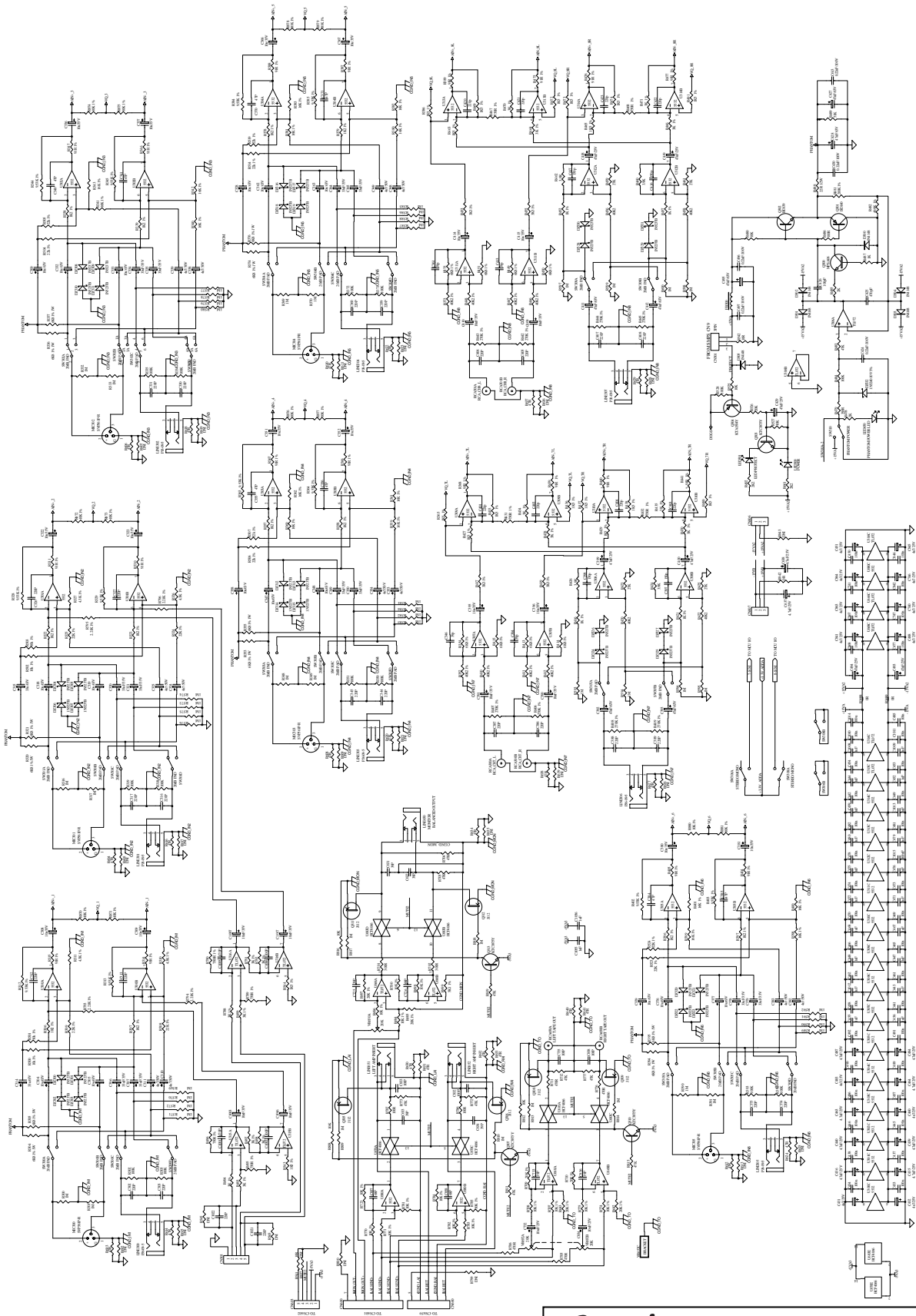


Speaker Jack PCB Component Side

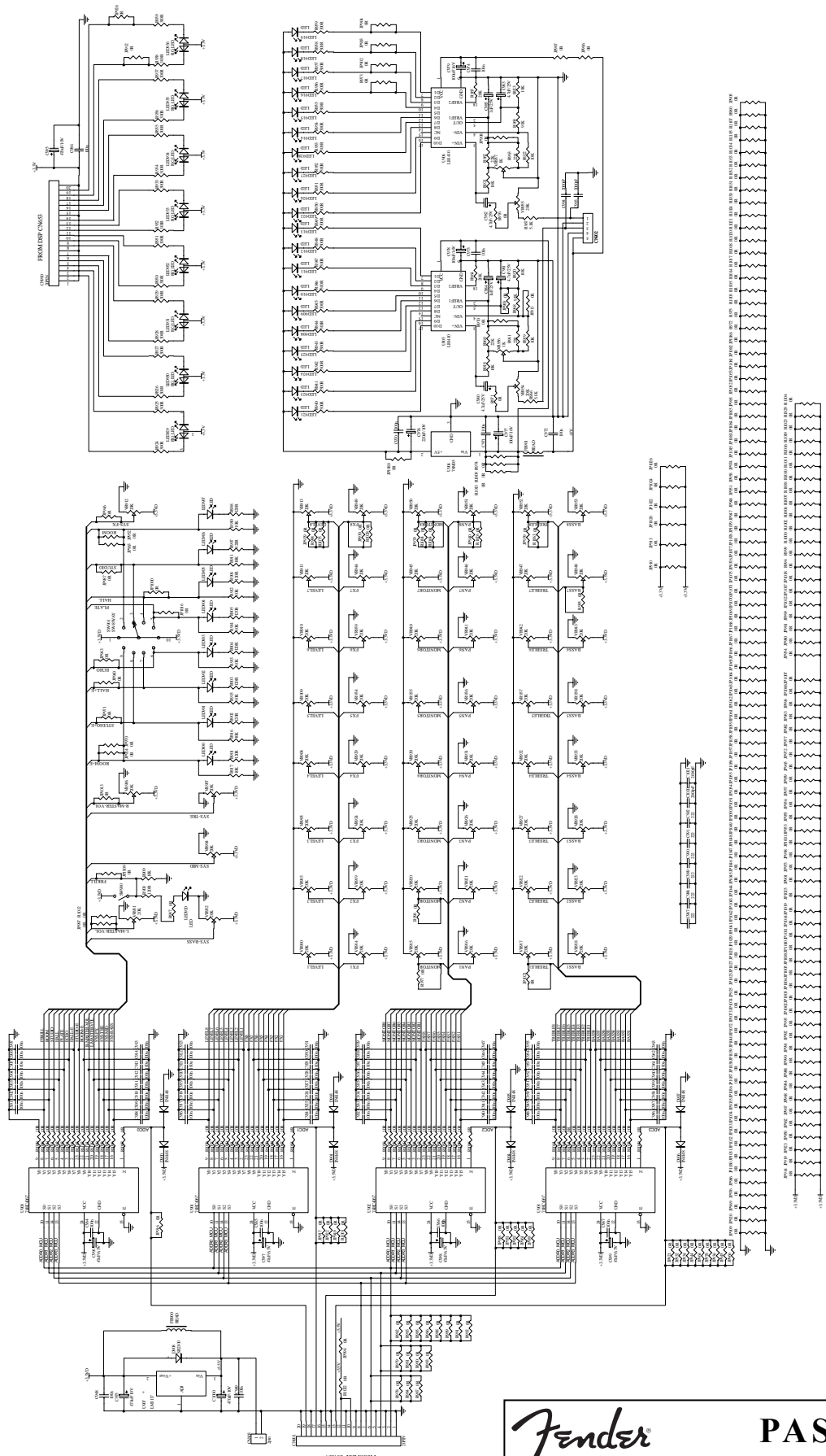


Speaker Jack PCB Copper Side

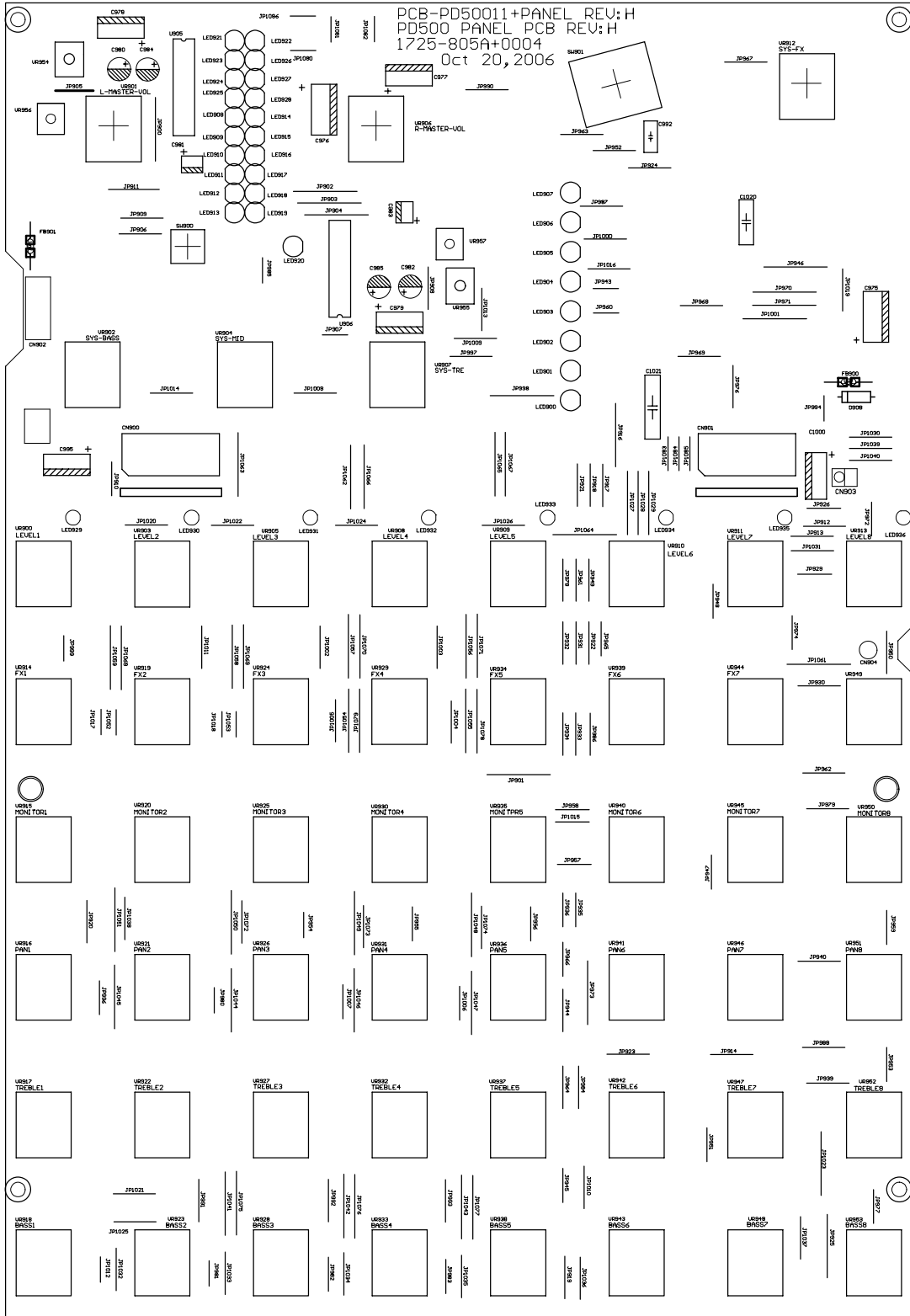
Fender **PASSPORT**
SPEAKER JACK PCB



Fender **PASSPORT**
INPUT Schematic Diagram

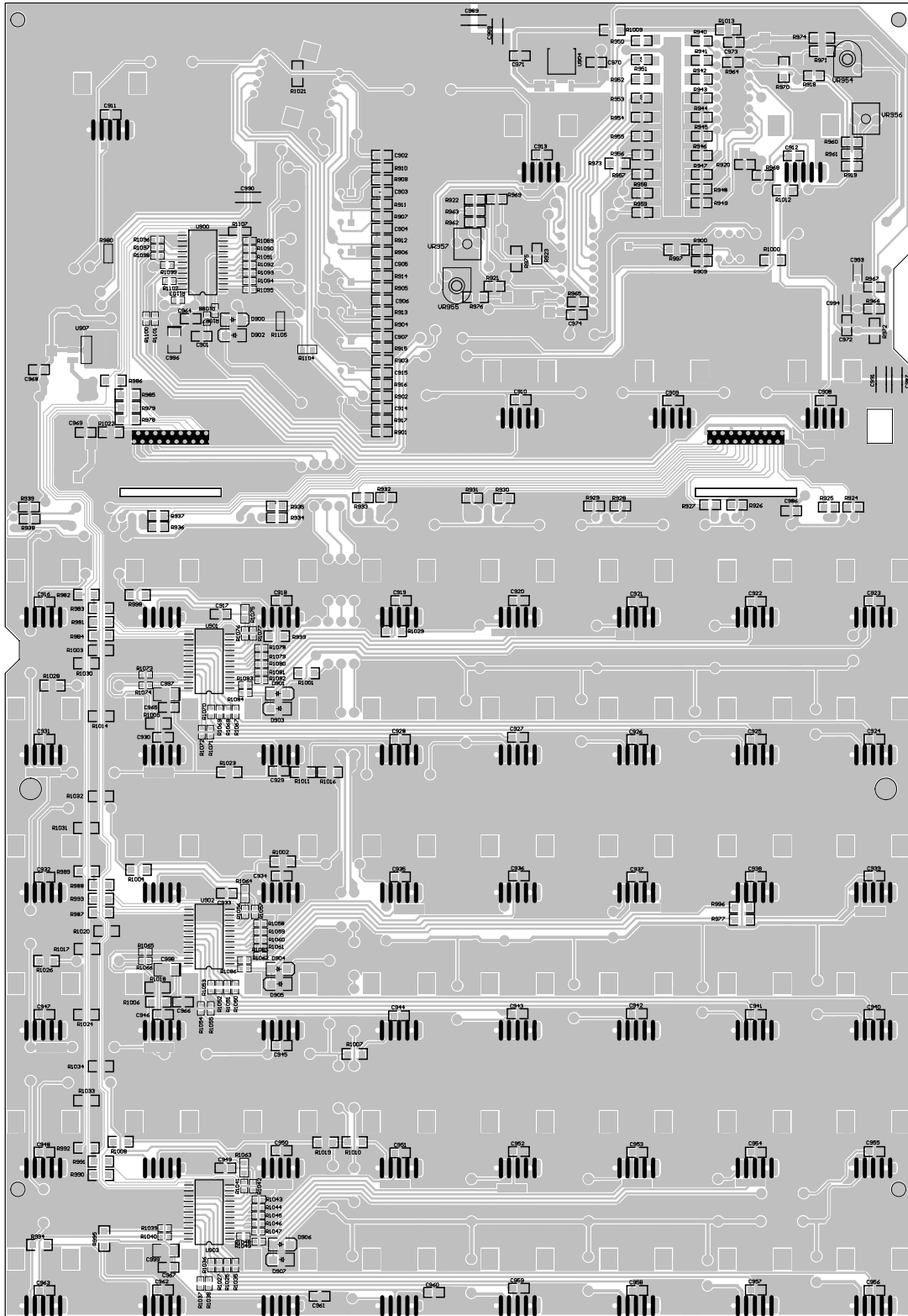


Fender **PASSPORT**
PANEL Schematic Diagram



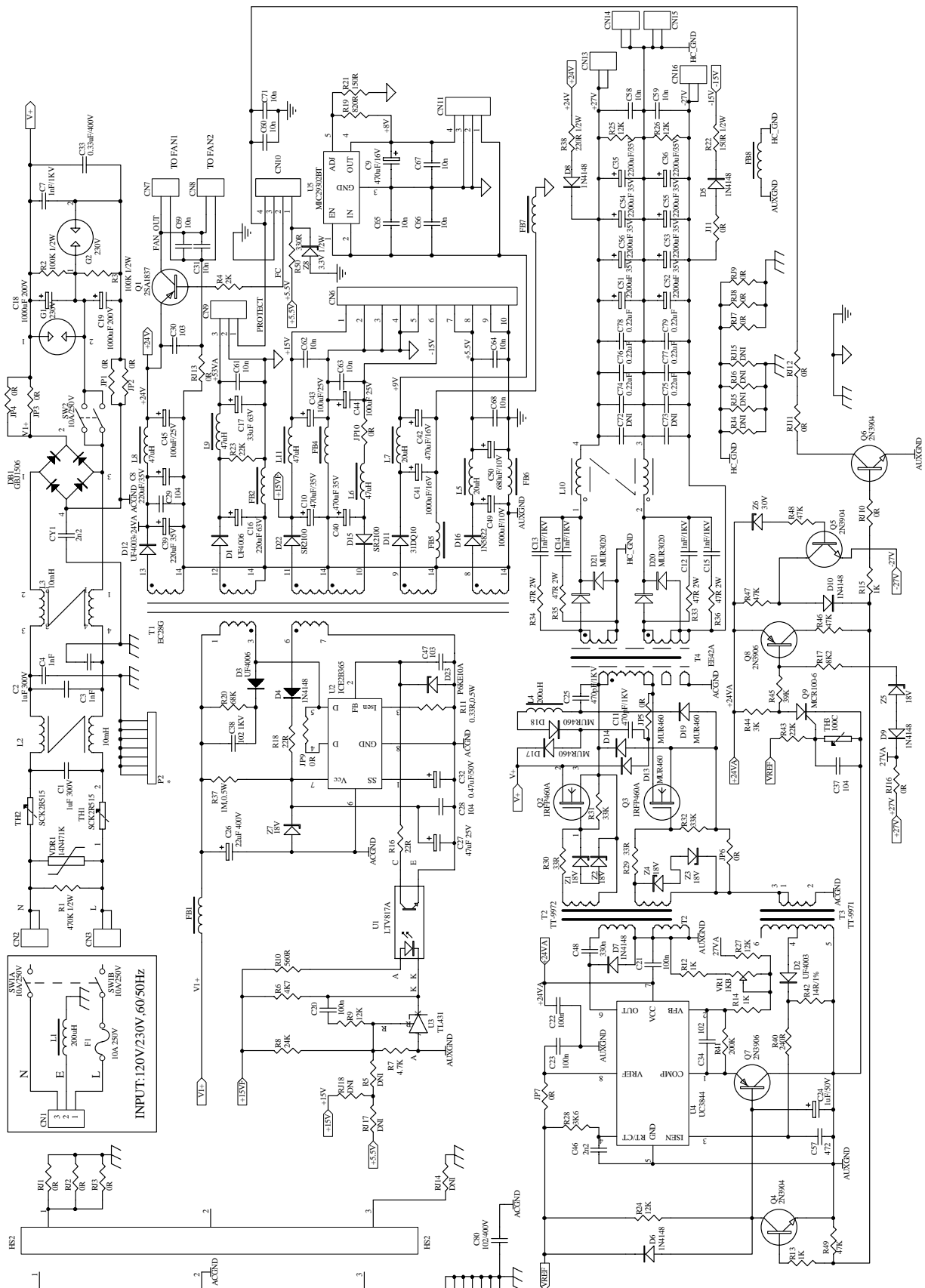
Panel PCB Component Side

Fender **PASSPORT**
PANEL PCB

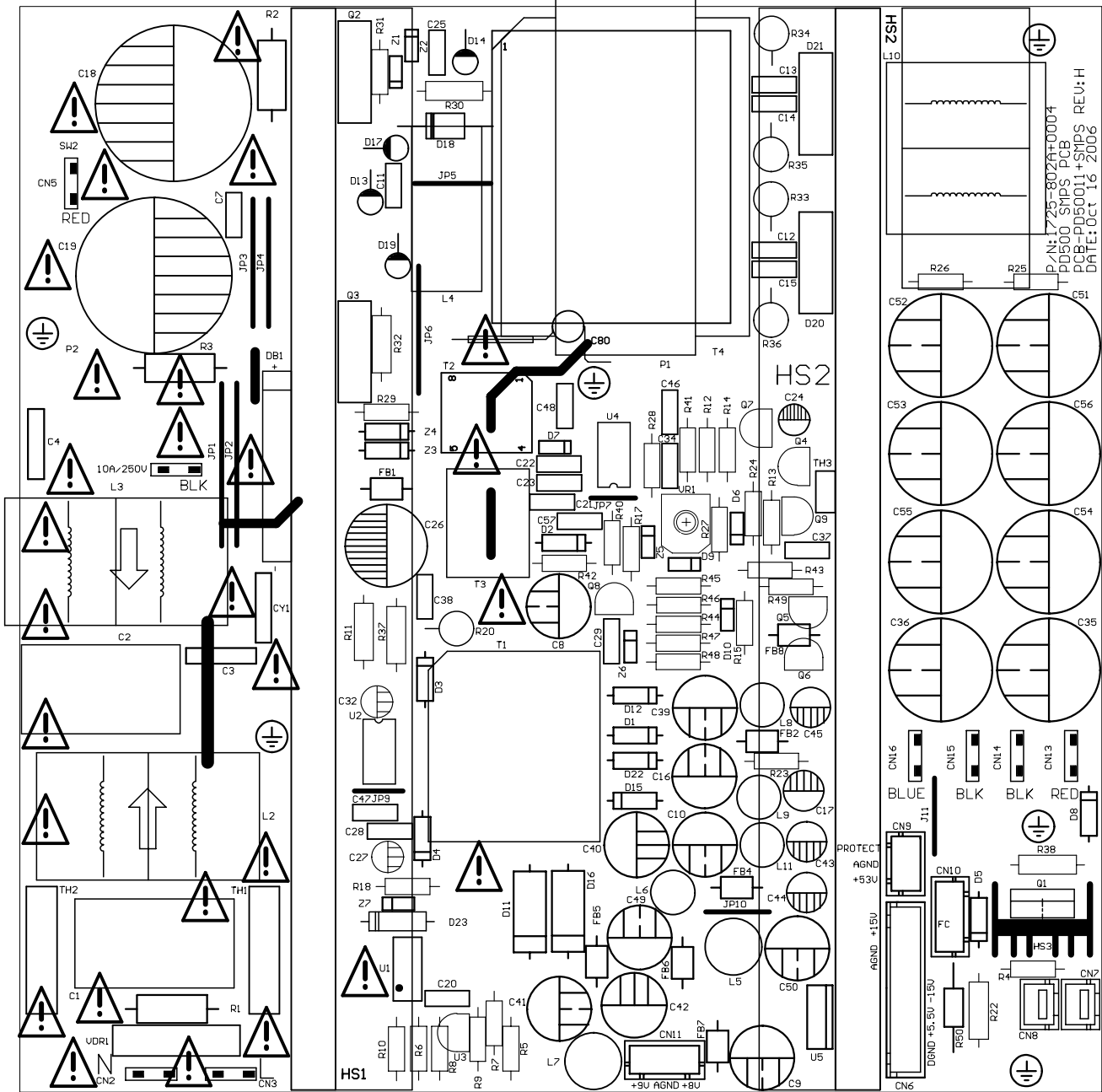


Panel PCB Copper Side

Fender **PASSPORT**
PANEL PCB

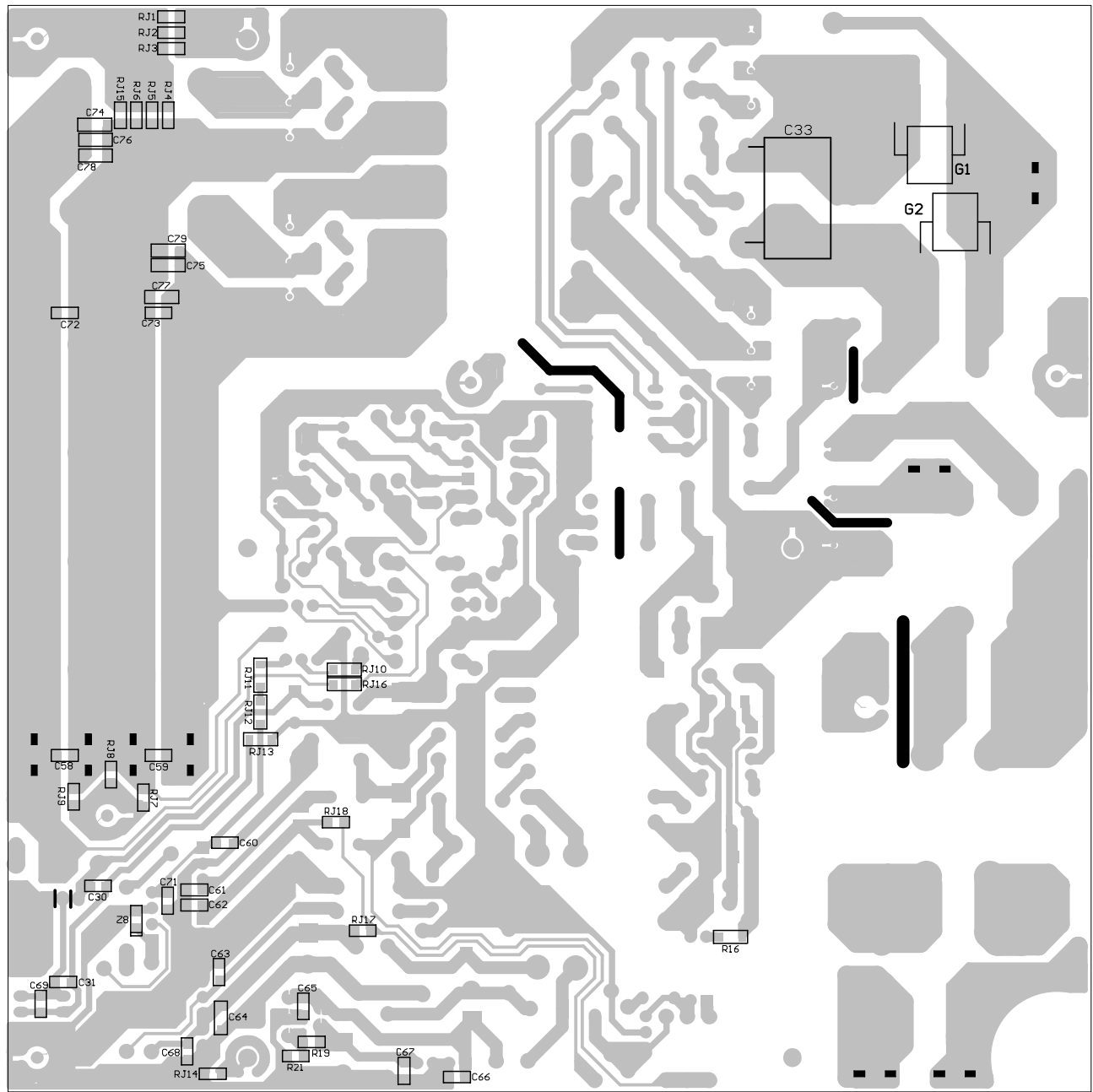


Fender **PASSPORT**
SMPS Schematic Diagram



SMPS PCB Component Side

Fender **PASSPORT**
SMPS PCB



SMPS PCB Copper Side

Fender **PASSPORT**
SMPS PCB