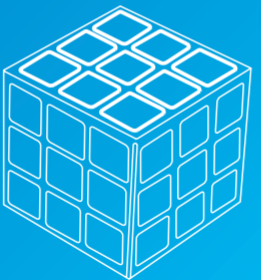




Accessories For Daily Life
Best of the Best



CUBE

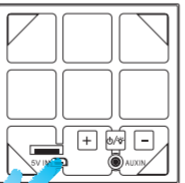


PACKING CONTENTS

- Cube Speaker system
- USB Charge Cable
- User Manual

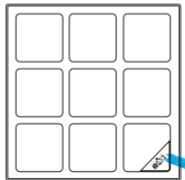
CHARGING SPEAKER

Charge speaker with the included USB charger cable. Plug the micro end into the socket(5V IN)on the bottom of the speaker and the other end into a power USB port like on a computer . You may use USB AC adapter that is available to charge your speaker .



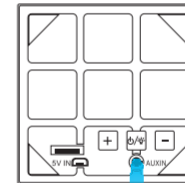
Music Play in power on

1. Make sure your speaker is fully charged.
2. To open the speaker, long press the Multifunctional button three seconds, there is power on indication and blue light flashes. And then you can start the pairing.
3. Open the bluetooth of the device needs to be paired, choose " BT-Cube "in the searching list and make the pair. The speaker will have reminding sound once pair succeeds.
4. In the pairing condition, if there is call, short press the Multifunctional button to start it. If you want to end it, short press the Multifunctional button two times can dial the last call automatically.
5. To close the speaker, long press the Multifunctional button three seconds, there is power off indication and blue light is off.



Music Play in AUXIN

1. Make sure your speaker is fully charged.
2. Open the speaker, Connect the music play device with speaker by AUXIN cable, and start the playing.
3. Press Led mode Button, choose different LED effect by short pressing the Led mode Button.



Troubleshooting

1. Auto pair failed (after the first pair succeed)
Delete " BT-Cube "in your bluetooth device list, close the speaker and restart it, pair again using the formal method.
2. System crashed
Reset the speaker in the charging condition and restart it on problems system crashes or other problems which makes speakers can't work.

FCC Statement

This equipment has been tested and found to comply with the limits for a Class B digital device, pursuant to Part 15 of the FCC Rules. These limits are designed to provide reasonable protection against harmful interference in a residential installation. This equipment generates uses and can radiate radio frequency energy and, if not installed and used in accordance with the instructions, may cause harmful interference to radio communications. However, there is no guarantee that interference will not occur in a particular installation. If this equipment does cause harmful interference to radio or television reception, which can be determined by turning the equipment off and on, the user is encouraged to try to correct the interference by one or more of the following measures:

- Reorient or relocate the receiving antenna.
- Increase the separation between the equipment and receiver.
- Connect the equipment into an outlet on a circuit different from that to which the receiver is connected.
- Consult the dealer or an experienced radio/TV technician for help.

This device complies with part 15 of the FCC Rules. Operation is subject to the following two conditions:
(1) This device may not cause harmful interference, and (2) this device must accept any interference received, including interference that may cause undesired operation.

Changes or modifications not expressly approved by the party responsible for compliance could void the user's authority to operate the equipment.