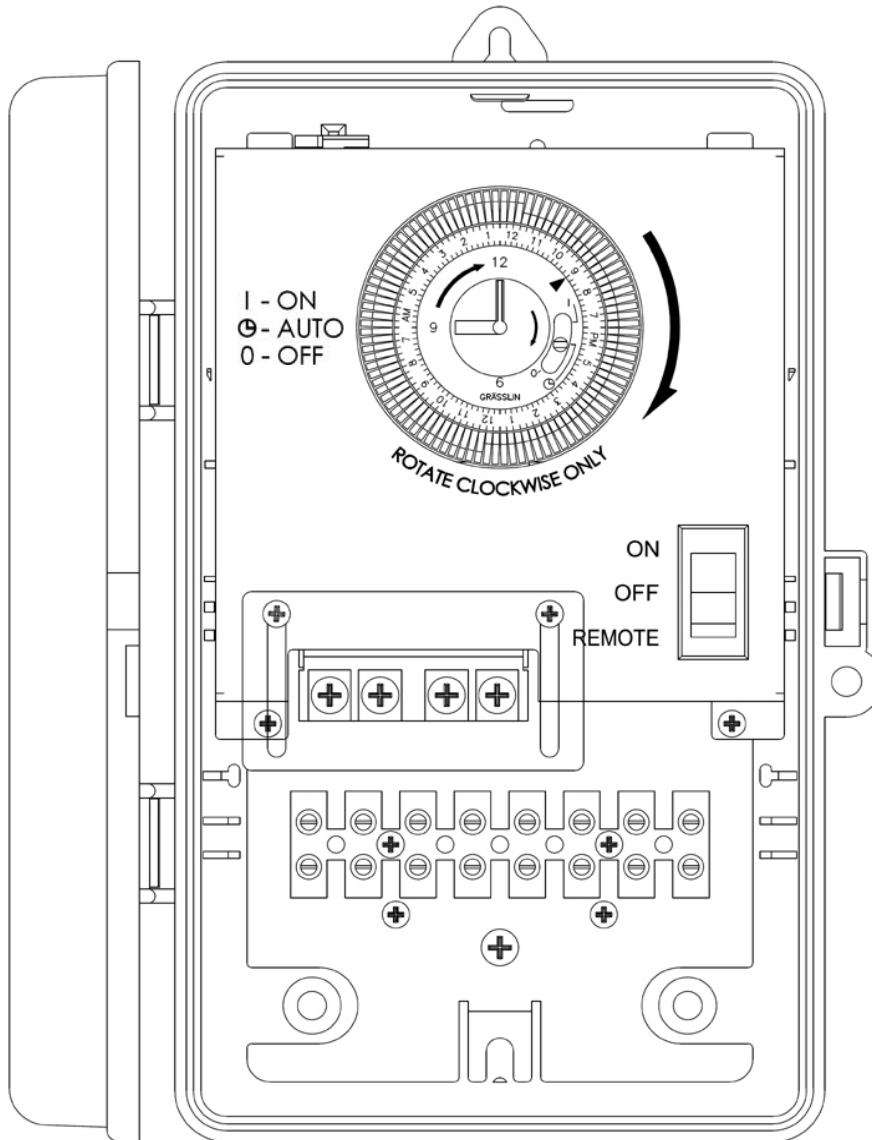


WPC-04R

Rated for use on 110/120VAC 60Hz and 220/240VAC 60Hz applications

Installation Instructions: Read these instructions in their entirety before performing any installation work.

FOR USE WITH POOL AND SPA PRODUCTS



ETL LISTED
Conforms to UL STD 508;
Certified to CSA STD
C22.2 No. 14

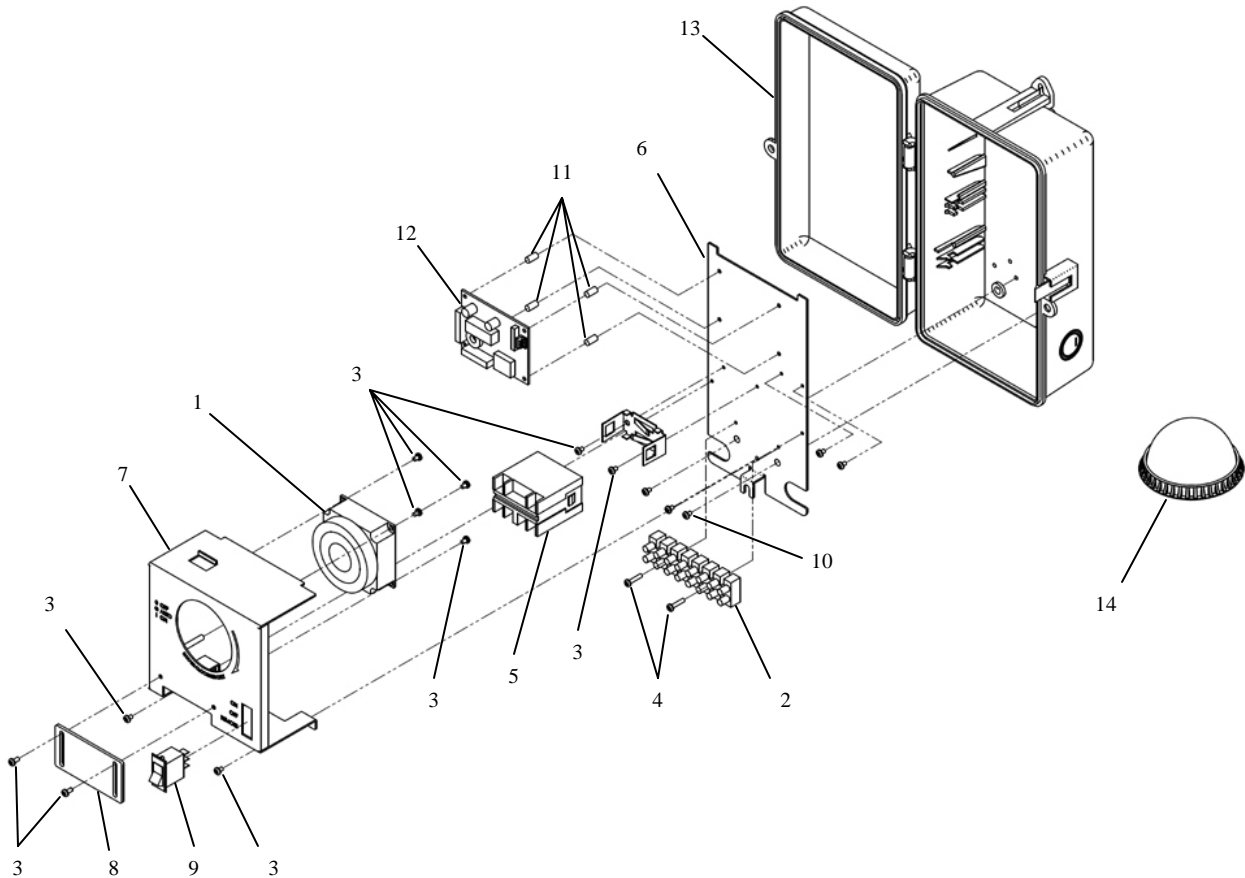


The WPC-04R consists of the following parts:

Item No.	Qty.	Component part No.	Description
1	1	42-15032-00	Timer
2	1	41-15004-08	8 Position Terminal Block
3	12	10-15089-01	M3 Screw, 4MM Length
4	2	10-15089-07	M3 Screw, 14MM Length
5	1	37-15000-00	Relay
6	1	02-15287-00	Base Plate
7	1	02-15286-00	Timer and Switch Plate
8	1	02-15285-00	Relay Cover
9	1	38-15012-00	3 Position Rocker Switch
10	3	A10670	Screw, 8-32 x .25"
11	4	14-15032-00	PCB Standoff
12	1	94-15108-01	PCB
13	1	04-15045-00	Enclosure
14	1	94-15092-00	WPC Repeater

Accessory Items:

FP 1/2	Temperature Freeze Device
WE-65	65 ft Repeater Cord Extension Kit
DL-HUB	Direct Light Hub Connection Kit





SAVE THESE INSTRUCTIONS!

IMPORTANT SAFETY INFORMATION

Basic safety precautions should be observed when operating the WPC-04R product and other associated equipment.

1. A qualified electrician must install the WPC-04R in accordance to the National and Local Electrical Codes.
2. The WPC-04R must not be less than 5 feet (3 meters in Canada) from inside edge of pool. **ONLY USE COPPER CONDUCTORS.**
3. Do not exceed the maximum ratings of individual components, wiring devices, and current carrying capacity of conductors.
4. For the bonding, grounding, installing, and wiring of underwater lights to the WPC-04R, refer to Article 680 of the National Electrical Code or Article 68 of the Canadian Electrical Code.
5. This device should never operate an equipment that could cause property damage, bodily injury, or death should it be activated unexpectedly.
6. Never allow children to operate the WPC-04R unsupervised.

FCC WARNING

1. This device complies with Part 15 of the FCC Rules. Operation is subject to the following two conditions: (1) this device may not cause harmful interference, and (2) this device must accept any interference received, including interference that may cause undesired operation.
2. Changes or modifications not expressly approved by Fiberstars Inc. could void the user's authority to operate the equipment.

ELECTRICAL RATINGS

Do not exceed the maximum electrical ratings of the WPC-04R. Install a 20Amp 120VAC Circuit Breaker in the Breaker Panel for connection to the Time Clock Input. This Circuit Breaker is also used for Light Input. Refer to pages 4 and 5 for installation instructions. Light circuit is rated for 8Amp 120VAC Max.

WARNING

- TURN OFF INCOMING POWER BEFORE SERVICING EQUIPMENT.
- ALL INSTALLATION AND MAINTENANCE WORK MUST BE PERFORMED BY QUALIFIED ELECTRICAL PERSONELL ONLY.
- VERIFY ALL ELECTRICAL RATINGS BEFORE INSTALLATION IS COMPLETE.

LOCATION

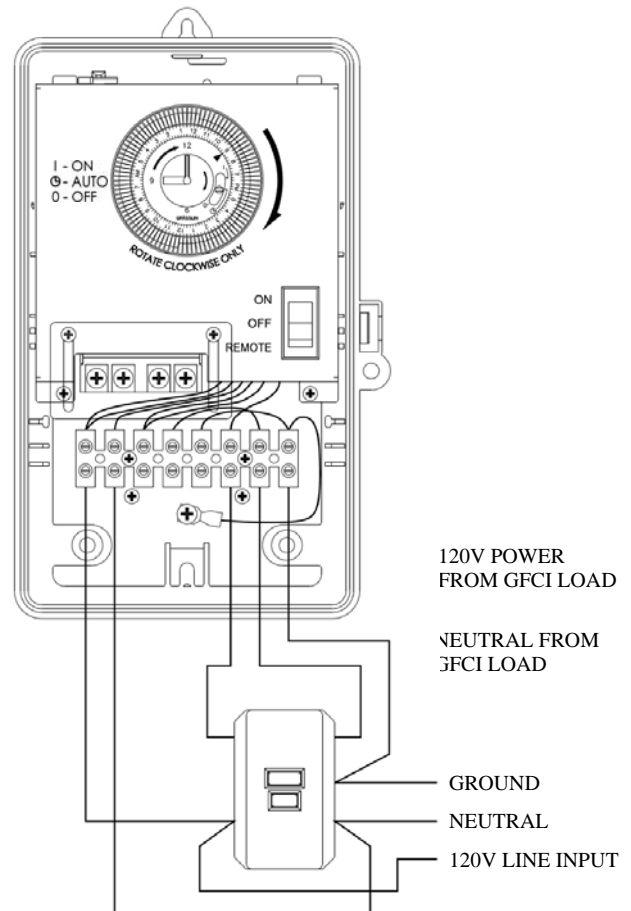
Install the WPC-04R enclosure using the mounting plates included with each enclosure. The WPC-04R is housed in a Type 3R rainproof enclosure and can be mounted anywhere between the pool equipment and the breaker panel.

WIRING INSTRUCTIONS

FOLLOW PROPER WIRING PRACTICES IN ACCORDANCE WITH ALL LOCAL REGULATORY REQUIREMENTS.

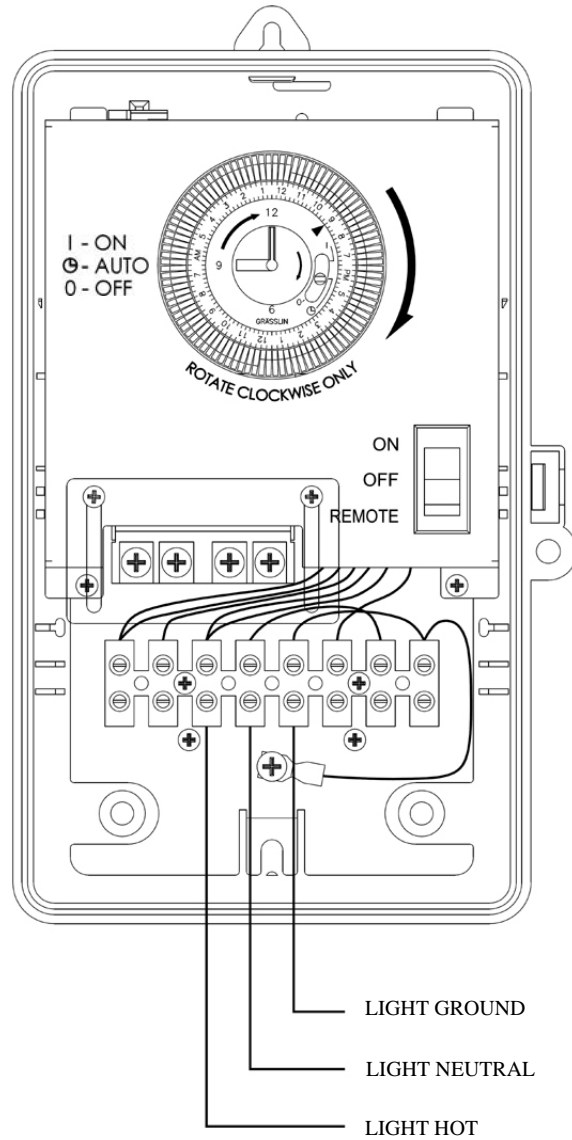
Power Connections:

To wire the WPC-04R use insulated **COPPER** wire only, 12 gauge minimum. Run a 1/2" to 3/4" conduit from the main breaker panel to the WPC-04R. Pull appropriate wires from the main breaker panel to the WPC-04R unit. To make power connections remove 3/8 inches of insulation from wire ends. Insert the bare end of wires under the pressure plate of terminals (Power Input, **HOT**). Use 1/8-in. flat head screwdriver to tighten terminal screws firmly (4.4 lb-in minimum). Connect the house common to the Power Inputs **NEUTRAL** terminal. Connect another **HOT** wire to the Timeclocks **T/C POWER** terminal. Connect a house common to the Timeclocks **T/C NEUTRAL**. Install a 20 Amp circuit breaker in the main breaker panel and connect the **HOT** wires from the WPC-04R.



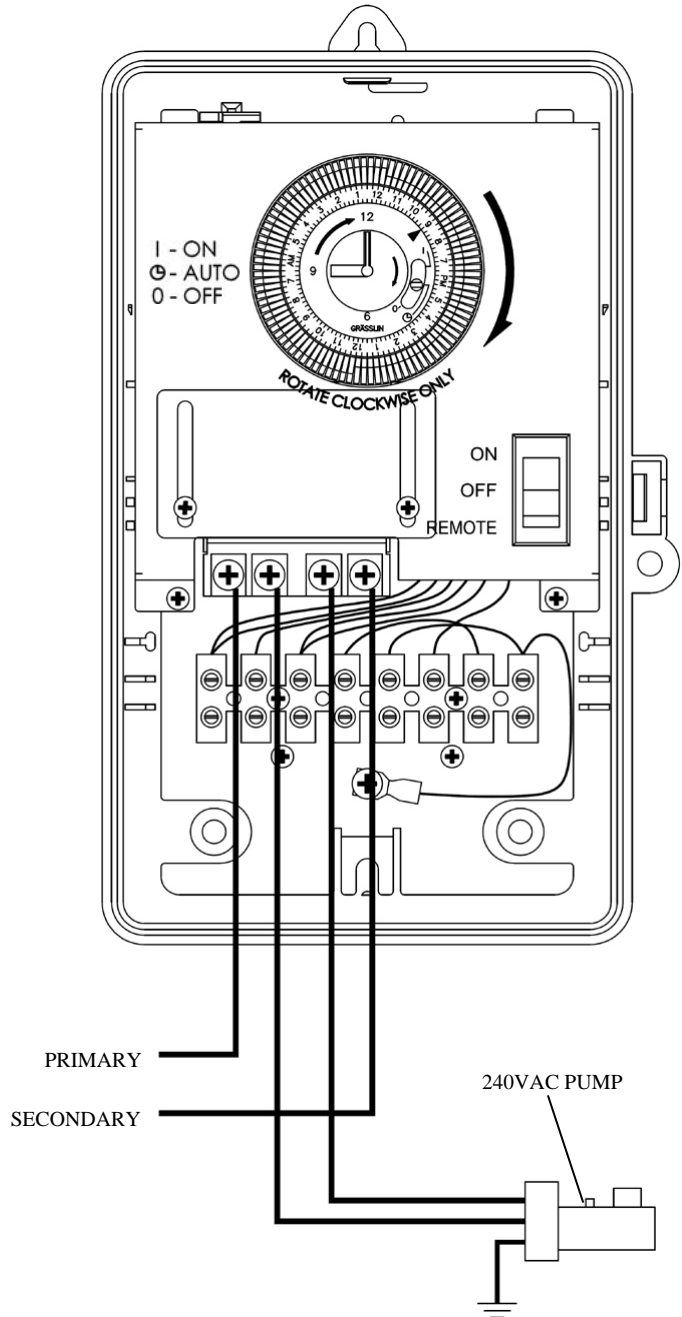
Hooking up Lights to Circuit 1

To connect a lighting product to the Circuit 1 switch, pull wires from the product to the WPC-04R through conduits connected to the bottom of the WPC-04R. As illustrated, connect the light that will be operated by the Rocker Switch to the Light Hot terminal. Connect the Neutral to the Light Neutral terminal. Connect the Ground to the Light Ground terminal. Do not exceed 8Amps per circuit.



CONNECTING A 240VAC PUMP

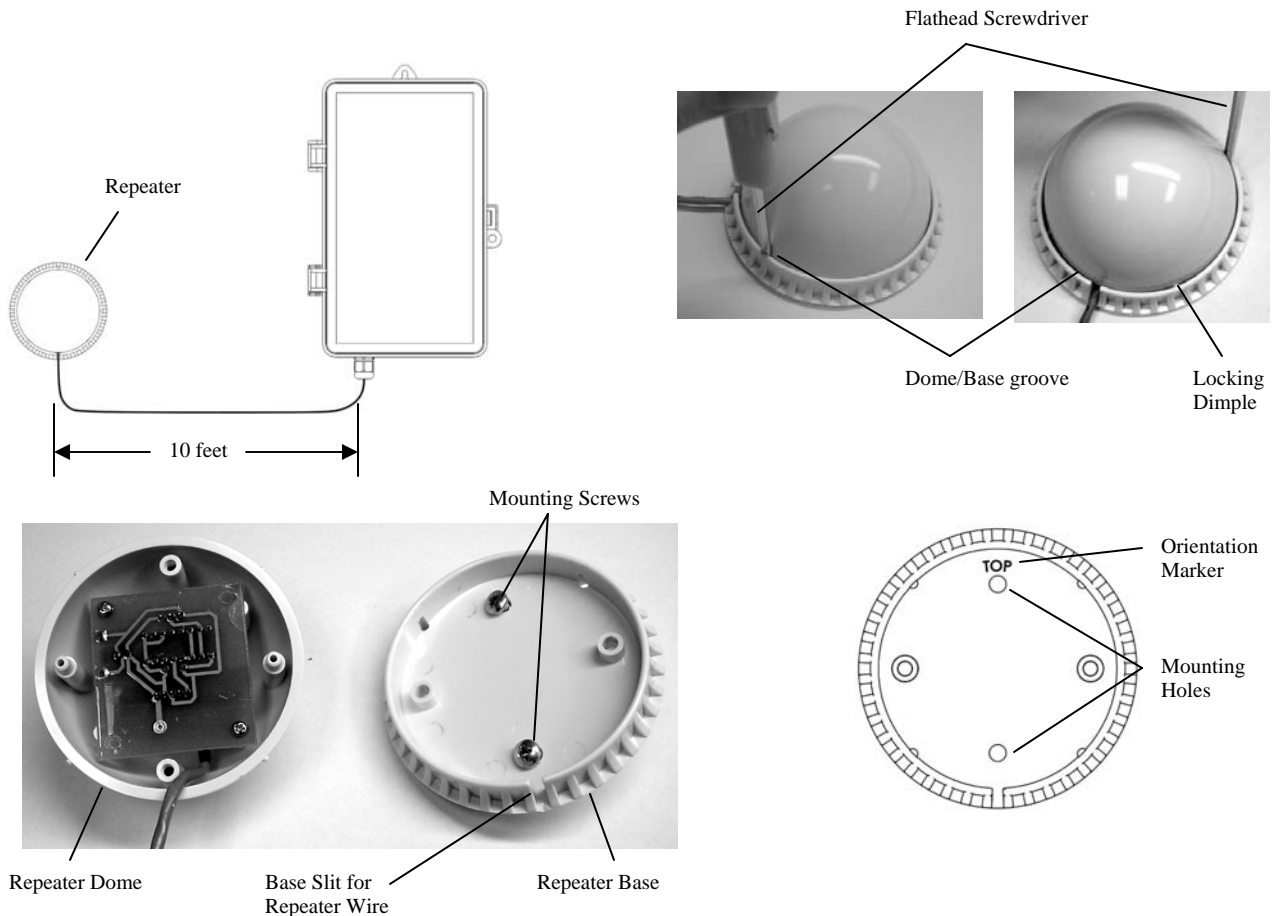
Connect the 240VAC pump to the relay as illustrated. Connect the Line Power to a 240VAC Circuit Breaker on the breaker panel. Circuit Breaker should be rated to correspond to Horsepower and Amperes rating of Pump being used. **NOT TO EXCEED 1.5HP 120V/3HP 240V – 30Amps.**



Repeater Mounting

The WPC-04R is equipped with a signal repeater that can be mounted up to 10 feet from the WPC-04R unit. This repeater receives signals from the wireless remote and sends that signal to the WPC-04R via the 10 foot cable. Establish a location for the Repeater that is in line of sight from where the wireless remote will be used most frequently and that is no more than 75 feet from furthest where the remote will be used. NOTE: If extension is needed, use Fiberstars part number 94-15098-00 and follow installation instructions supplied with the Repeater Extension.

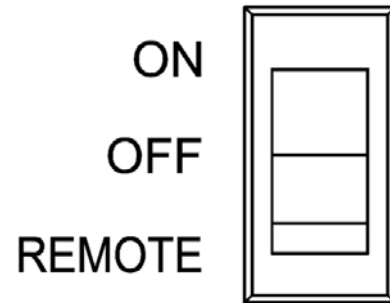
To mount the Repeater, carefully insert a small flathead screwdriver into groove between the Dome and Base approximately where the locking dimples are located. Pry the Dome out of on of the locking dimples. Then carefully insert the small flathead screwdriver into the groove between the Dome and the Base in an adjacent locking dimple and pry the Dome out. Then separate the Dome from the Base by hand. Using the supplied self-drilling screws, locate a suitable mounting surface and screw the base to this surface. Note that the marking “TOP” must be in the 12 o’clock position and the wire slit must be in the 6 o’clock position. Do not over tighten the screws as it may damage the Repeater base. Realign the Repeater Dome to the Base and ensure that the wire is exiting the base through the slit and the Locking Dimples are aligned with the



OPERATING INSTRUCTIONS

WPC-04R ROCKER SWITCH OPERATION

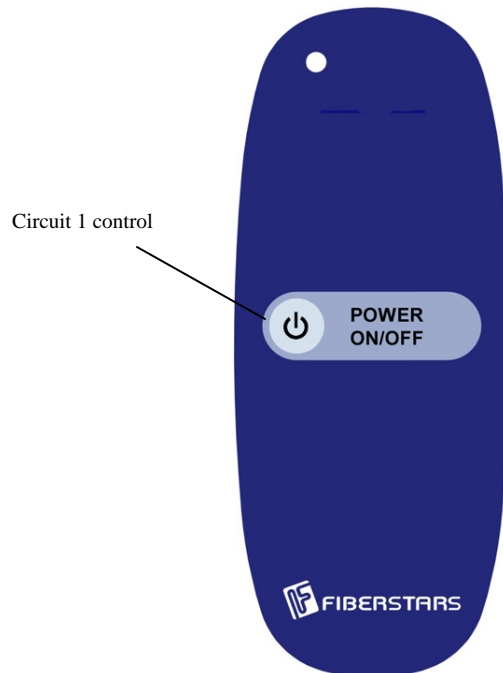
The WPC-04R receiver box houses one rocker switch. For operation with the wireless transmitter, the switch needs to be in the DOWN or REMOTE position. To manually turn ON the device connected to the Rocker Switch, flip the Rocker Switch UP or to the ON position. When the Rocker Switch is in the ON position, the Wireless Remote will not be able to turn OFF the device connected to the Rocker Switch terminal. To turn OFF the device manually, flip the Rocker Switch to the MIDDLE or OFF position. NOTE: In the OFF position, the wireless remote operation will be bypassed. To re-enable the wireless remote operation, flip the Rocker Switch back to the BOTTOM or REMOTE position. NOTE: If the unit turns ON when the switch is returned to the REMOTE position, simply use the wireless remote to turn OFF the unit if desired.



NOTE: Switch is shown in the ON position.

WIRELESS REMOTE OPERATION

NOTE: The Rocker Switch on the WPC-04R must be set to REMOTE for wireless operation. The POWER ON/OFF button controls the device connected to the Rocker Switch terminal. With each push of the button, the WPC-04R toggles the device ON and OFF.



TIMER OPERATION

Set time to current time. In the example below, the current time is set for 9:00pm. NOTE: Only turn the Timer dial clockwise or the timer will be damaged. Once the time has been set to the current time, set the hours of the Pump operation by “snapping” the timer tabs inwards towards the center. NOTE: Each tab represents 15 minutes of operation and tabs set inwards towards the center is for OFF operations and ON when the tabs are set outwards as illustrated. In the example below, the Pump will be off from 12:00pm to 11:45pm.

Once the time and time of operation has been set, ensure that the Timer function switch is set to Auto for timer control of the Pump as illustrated below. To turn off timers automatic functions, set the Timer function switch to OFF. To manually turn on the Pump, set the Timer function switch to the ON position. NOTE: When in the ON position, the Pump will continue to run until the Timer function switch is set to Auto where the tabs at the Set Point is in the OFF position or if the Timer function switch is rotated to the OFF position.

I - ON
 - AUTO
 0 - OFF

