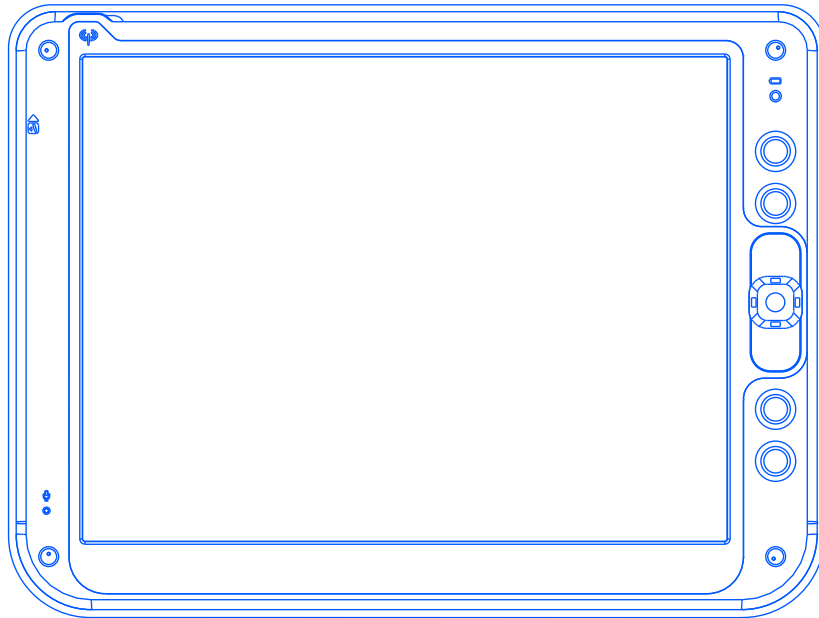


# PHILIPS

## User's Manual



# ProScribe CV

12 inch Wireless Thin Client

CE

(Rev. 0.01)

## Copyright ©

This manual is copyrighted with all rights reserved. Under the copy rights law, this manual may not be copied, in whole or part, without written consent of Philips. Under the law, copying includes translating into another language or format. The monitor described in this manual, has been certified/registered by the safety agencies/regulatory authorities as model n° : CMPD12CV

## FCC Notice

This equipment has been tested and found to comply with the limits for a class B digital device, pursuant to Part 15 of FCC Rules. These limits are designed to provide reasonable protection against harmful interference in a residential installation.

This equipment generates, uses and can radiate radio frequency energy and , if not installed and used in accordance with the instructions, may cause harmful interference to radio communications.

However, there is no guarantee that interference will not occur in a particular installation.

If this equipment does cause harmful interference to radio or television reception, while can be determined by turning the equipment Off and On, the user is encouraged to try to correct the interference by one or more of the following measures.



- Reorient or relocate the receiving antenna.
- Increase the separation between the equipment and receiver.
- Connect the equipment into an outlet on a circuit different from that to which the receiver is connected.
- Consult the dealer or an experienced radio TV technician for help.

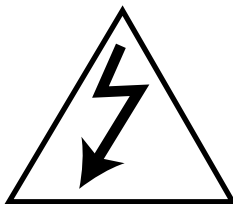
## Modification

The FCC requires the user to be notified that any changes or modifications made to this device that are not expressly approved by the manufacturer may void the user's authority to operate the equipment.

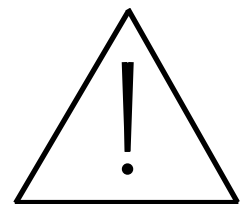
## Cables

Connections to this device must be made with shielded signals cables with metallic RFI/EMI connector hoods to maintain compliance with FCC Rules and Regulations.

-  The lightning flash with arrowhead symbol is intend to alert the user of the presence of uninsulated “dangerous voltage” within the product’s enclosure that may be sufficient magnitude to constitute a risk of electrical shock to people.
-  The exclamation mark is intended to alert the user of the presence of important operating and maintenance (servicing) instructions in literature accompanying the appliance.



**CAUTION**  
RISK OF ELECTRICAL SHOCK  
DO NOT OPEN  
**ATTENTION**  
RISQUE DE CHOC ELECTRIQUE  
NE PAS OUVRIR



**CAUTION: TO AVOID THE RISK OF ELECTRICAL SHOCK.  
DO NOT REMOVE COVER (OR BACK)  
NO USER SERVICEABLE PARTS INSIDE  
REFER SERVICING TO QUALIFIED SERVICE PERSONNEL**

### **WARNING:**

**THE ENCLOSURE HAS TO BE CHECKED UPON COLLISION DAMAGE; REFER TO QUALIFIED SERVICE PERSONNEL**

**PROSCRIBE MONITOR DO NOT HAVE APPLIED PARTS, AND ARE NOT INTENDED TO BE CONNECTED TO A PATIENT CIRCUIT.**

---

## **RF Exposure Statement**

This EUT is compliance with SAR for general population / uncontrolled exposure limits in ANSI/IEEE C95.1-1999 and had been tested in accordance with the measurement methods and procedures specified in OET bulletin 65 Supplement C.

This equipment complies with FCC radiation exposure limits set forth for an uncontrolled environment. In order to avoid the possibility of exceeding the FCC radio frequency exposure limits, human proximity to the antenna shall not be less than 1.5 cm during normal operation.

This device and its antenna (s) must not be co-located or operating in conjunction with any other antenna or transmitter.

## **INTRODUCTION**

### **A ruggedized wireless thin client display**

The Philips ProScribe is a ruggedized wireless thin client display, released with Windows XP embedded, both for ITE and medical applications.

The ProScribe is designed upon PMS CV requirements. It makes use of wireless technology and thin-client computing to allow workers to access applications stored on a central server as if they were sitting behind their desktop monitor. Its ruggedized design, compact size and touch-screen interface makes it also a perfect solution for point of information and system control applications too.

### **Main features**

With a 1GHz VIA-based x86 processor as its engine and Microsoft Windows XP embedded as operation system,

Other main features are:

- 12.1 inch TFT-LCD with Touch-screen functionality;
- 1024x768 resolution (XGA);
- display emulated keyboard;
- integrated WiFi™ 802.11b/g wireless LAN
- lightweight (2,17kg);

### **Rugged design for the toughest environments**

The ProScribe is compliant with industry standards for liquid and dust resistance (IP21) and is also physically tough, with a highly durable build capable of surviving a drop from as high as one meter onto a concrete surface.

### **Easy to integrate, deploy and maintain**

The ProScribe allows users to take full benefit of thin-client computing where data and applications are kept on a server where they can be managed centrally, more securely and at lower total cost. Nearly no downtime is incurred in case a device is lost or stolen: a new ProScribe straight from the box allows a user to resume an interrupted login session exactly as before.

Server access is provided by one of the three pre-installed thin clients, Microsoft Remote Desktop Protocol (RDP), Internet Explorer or Citrix Independent Computer Architecture (ICA).

### **Flexible to fit any vertical application**

The ProScribe offers a full suite of utilities and multiple plug-and-play interfaces for easy integration into any type of IT environment, and specifically:

- Full-size XGA resolution: 1024 x 768
- Basic version with 512MB RAM and 1GB flash memory
- Two USB ports
- An 100Mbps RJ-45 Ethernet interface

### **Approved for medical applications**

The ProScribe meets the medical safety and electromagnetic requirements of IEC 60601-1 and IEC 60601-1-2, if used with power supply unit certified according to the same standard (Medical Grade PSU; check the d.c. supply connector pin-configuration of the PSU before connecting it to the unit).

***Unit shall be used, with power supply.***

#### **NOTES:**

1 - WiFi and the WiFi logo are the registered trademarks of the Wi-Fi Alliance.

2 - Microsoft and Windows, Windows XP and Windows RDP are registered trademarks of Microsoft Corporation

3 - All other trademarks and registered trademarks are property of their respective owners.

# CONTENTS

<b>TECHNICAL INFORMATION</b> .....	6
<b>INSTALLATION</b> .....	7
<b>DIMENSIONS</b> .....	8
<b>WEIGHT</b> .....	8
<b>INPUT INSTRUCTION</b> .....	9
right view .....	9
left view .....	9
back view .....	10
<b>CONTROL PANEL DESCRIPTION</b> .....	11
<b>BEFORE YOU BEGIN</b> .....	12
<b>GETTING STARTED</b> .....	12
stylus re-calibration .....	12
power saving mode .....	13
set data and time .....	13
WLAN setup .....	13
ethernet LAN setup .....	14
screen brightness .....	14
<b>DATA INPUT TO THE TOUCH SCREEN</b> .....	15
touch the screen .....	15
left or right click emulation .....	15
<b>TOUCH-PANEL CALIBRATION</b> .....	16
<b>CONNECTING TO A NETWORK</b> .....	20
WLAN .....	20
start a connection .....	21
LAN .....	22
<b>FEATURED SOFTWARE APPLICATION</b> .....	23
control panel .....	23
microsoft internet explorer .....	23
CITRIX ica client .....	23
microsoft RDP .....	23
windows media player .....	23
hot key utility .....	24
wordpad .....	24
connecting external peripherals .....	24
ruggedized design .....	24
<b>TROUBLESHOOTING</b> .....	25
the ProScribe will not turn ON .....	25
my system does not run smoothly .....	25
how do i turn off my ProScribe .....	25
when I use the stylus pen .....	25
<b>SAFETY AND PRODUCT CARE INSTRUCTIONS</b> .....	26
to clean the screen .....	26
to clean the case .....	26
<b>PRECAUTIONS</b> .....	27
installation .....	27
handling .....	27
maintenance .....	27
transportation .....	27
disposal of the LCD monitor .....	28
<b>IDENTIFICATION LABEL</b> .....	29
<b>INDEX</b> .....	30

## 1.1.0 TECHNICAL INFORMATION

<b>Processor</b>	VIA Low Voltage VIA Eden running at 1GHz (BGA, 133MHz FSB, 64KB L2 cache, 0.13 micron process with 7 watt-Thermal-Design-Power)
<b>Chipset</b>	VIA CN400 + VT8237R
<b>Graphic processor</b>	VIA/S3G Unichrome Pro 1GP
<b>Bios</b>	Inside version VP20, with the kernel-code-base V4.31
<b>Operating System</b>	Microsoft Windows XP Embedded with SP2
<b>Networking</b>	Built-in 802.11 B/G USB WLAN module with integral antenna
<b>Remote Protocol</b>	Microsoft RDP / Citrix ICA
<b>Memory</b>	512 MB SDRAM on board
<b>Flash ROM</b>	1GB flash memory module
<b>LCD Panel Characteristic</b>	12.1 “ TFT LCD panel (Mini required : XGA 1024 x 768 resolution for 12.1” ) , LVDS I/F
<b>Audio System</b>	AC97 internal microphone and speaker; stereo (supported via earphone jack)
<b>Durability</b>	Rugged anti-shock design with standing 1 meter drop / IP21 water and dust resistant construction (front side)
<b>PAD I/O</b>	<ul style="list-style-type: none"><li>•2 x USB</li><li>•1 x D-SUB 9 pins which supports Ethernet signals and power DC in</li><li>•1 x Speaker</li><li>•1 x Internal microphone</li></ul>
<b>LED indicator</b>	<ul style="list-style-type: none"><li>•1 x WLAN LED</li><li>•1 x Power green LED (ON / OFF status)</li></ul>
<b>Button AND Controls</b>	<ul style="list-style-type: none"><li>• 4 x hot keys (three customized)</li><li>• 1 x Reset button</li><li>• 1 x Four-way direction key with Enter</li></ul>
<b>Power Supply requirement</b>	<ul style="list-style-type: none"><li>• DC_In 24V (3.42A)</li></ul>

---

## 2.1.0 INSTALLATION

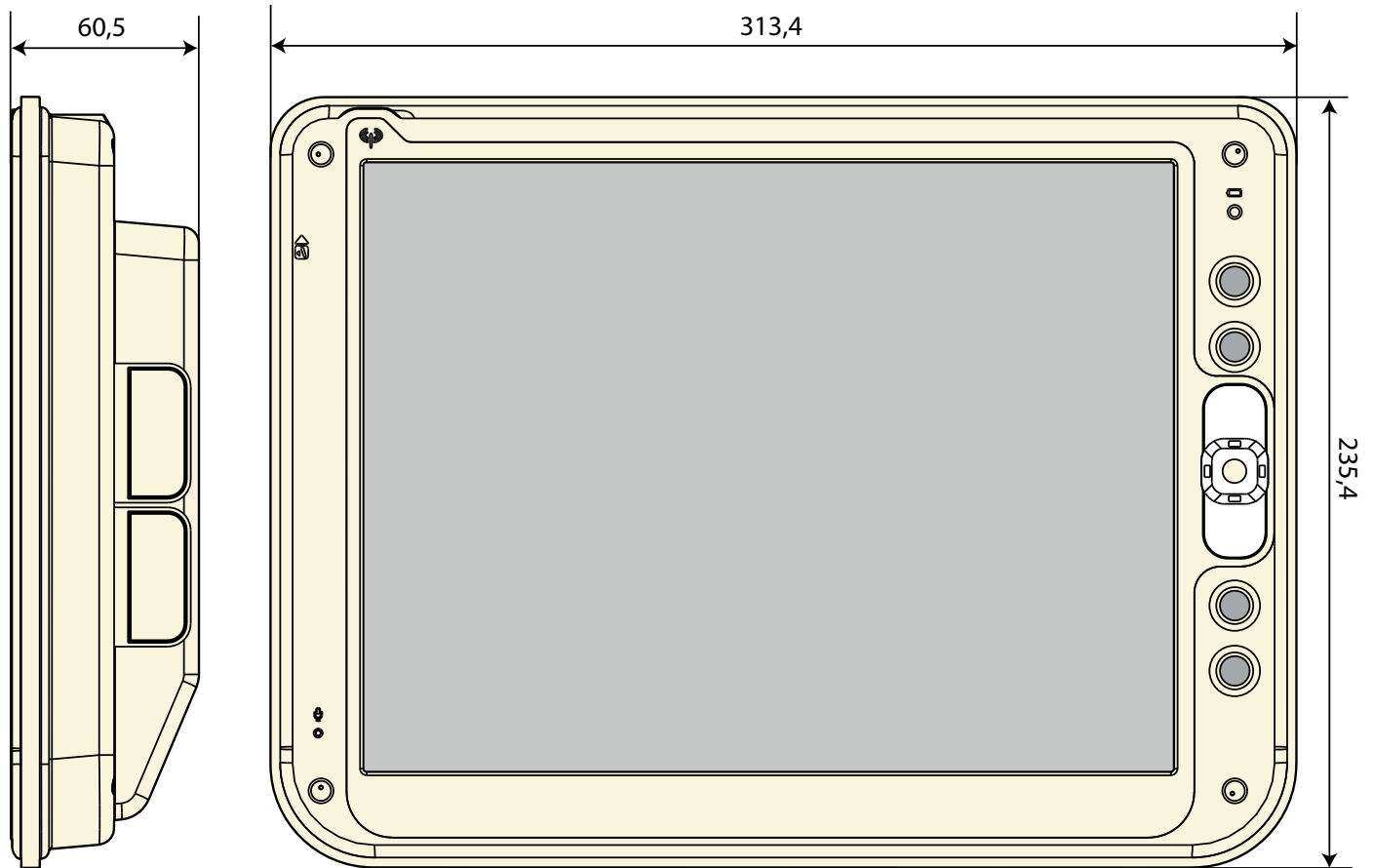
See BBRS ver. 0.1 PMS CV customer spec. paragraph. 5.1.3 cod. 4522 901 05890

While unpacking the ProScribe, inspect it and other package contents for shipping damage that could cause a fire or shock hazard. Immediately report any shipping damage to the carrier or transportation company and contact customer service for assistance. Keep all packing material in case you need to ship, store or return the monitor.

***NOTE:***

*This user's manual is available in electronic format only, installed on the PAD and accessible by double click up on the relevant icon on the desktop*

### 3.1.0 DIMENSIONS



(fig. 8a)

### 3.2.0 WEIGHT

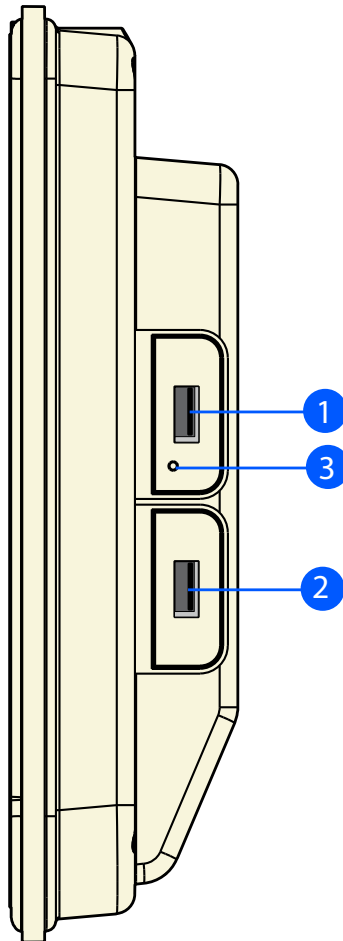
Weight without packaging : 2,17 Kg.



## 4.1.0 INPUT INSTRUCTION

### 4.1.1 RIGHT VIEW

1. USB 2.0 port type A
2. USB 2.0 port type B
3. Switch reset



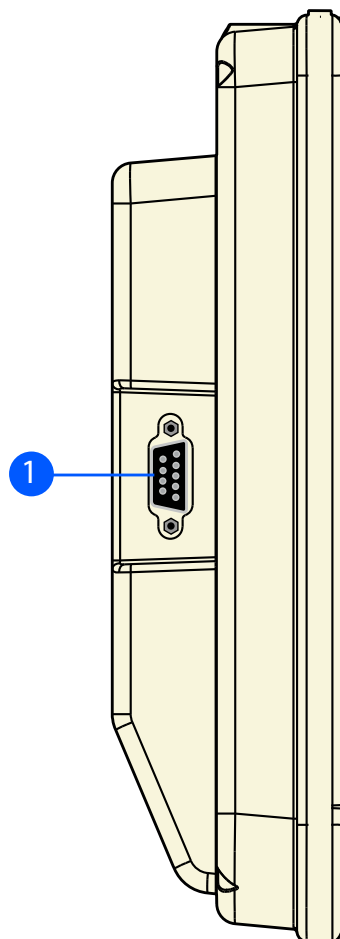
(fig. 9a)

### 4.1.2 LEFT VIEW

1. D-SUB 9 pins male

Pinning configuration:

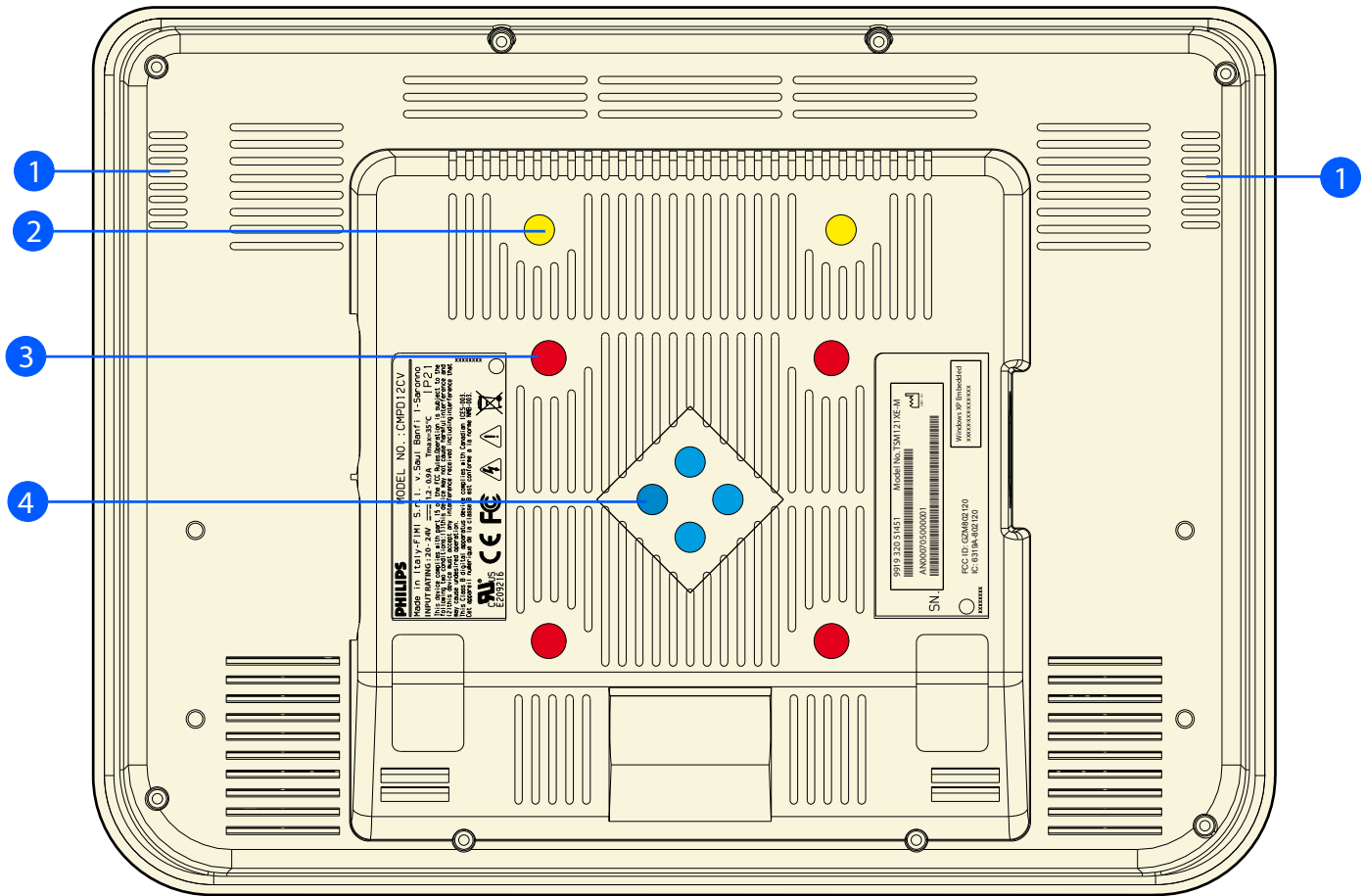
- 1 Screen (PE)
- 2 TX+
- 3 RX+
- 4 24V
- 5 24V
- 6 TX-
- 7 RX-
- 8 0V
- 9 0V



(fig. 9b)

#### 4.1.4 BACK VIEW

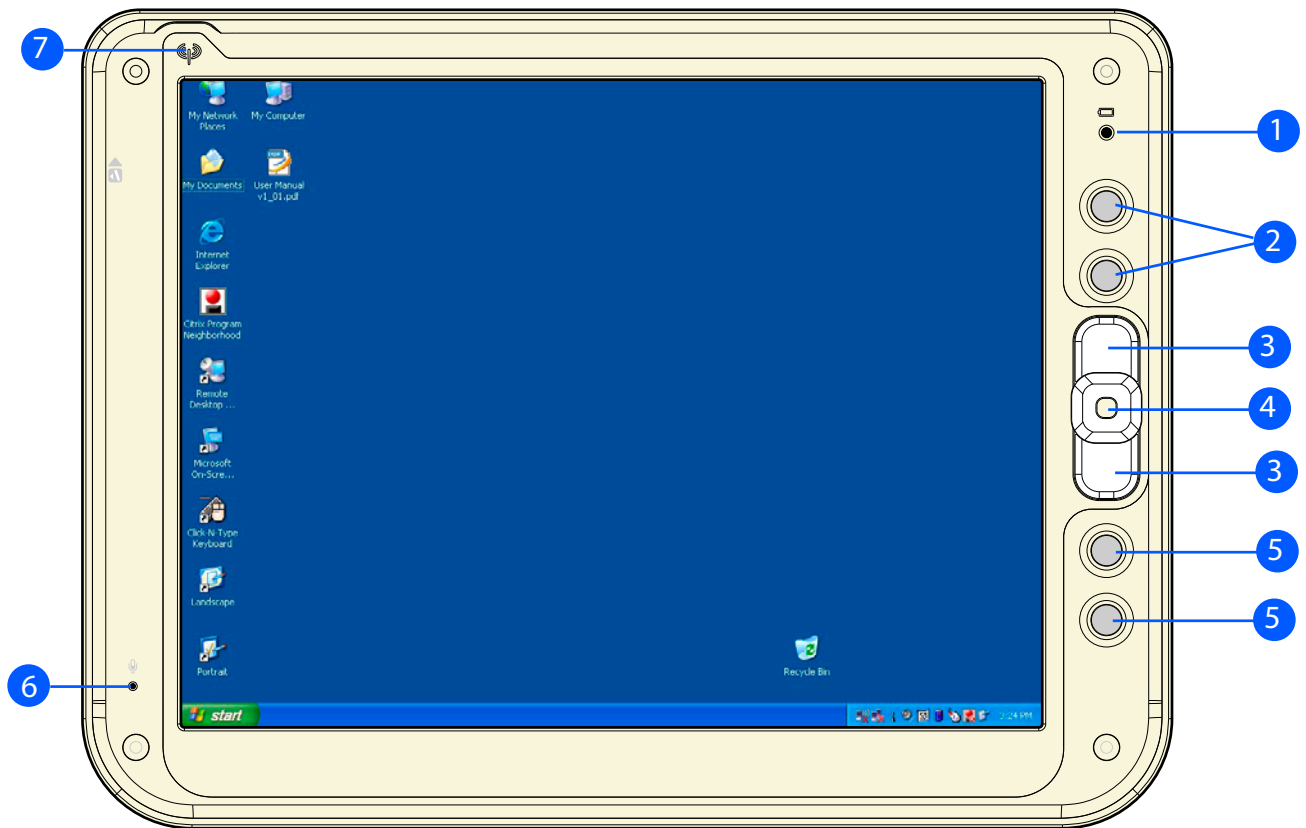
1. Speakers
2. Desktop feet support mounting screw holes (2 x M3)
3. VESA MIS-D mounting screw holes (4 x M4)
4. TSM swing-arm and pedestal mounting screw holes (4 x M3)



(fig. 10a)

## 5.1.0 CONTROL PANEL DESCRIPTION

1. Battery LED
2. Programmable buttons
3. Track stick buttons
4. Track stick
5. Programmable buttons
6. Microphone
7. WLAN status LED



(fig. 11a)

## 6.1.0 **BEFORE YOU BEGIN**

The ProScribe is intended for use as Windows XP embedded powered wireless thin client touch-screen device.

To use your ProScribe you must have the following:

- a AC / DC power supply (24Vdc output voltage - 3,42 Adc output current)
- a wireless access point to access the corporate network or
- an Ethernet connection in case you plan to use the ProScribe on a fixed location

## 6.2.0 **GETTING STARTED**

The Windows XP embedded operating system provides you all the convenience to set-up any type of thin-client session with centrally located applications or web-based services. Before doing so, please make sure to apply the following instructions.

### ***IMPORTANT NOTICE :***

#### **Write protect**

The ProScribe is pre-configured with a Windows XPe feature called Enhanced Write Filter (EWF) to prevent writing on the CF card. When write protection is activated, all recently installed software products and changed user settings are not stored into the CF and hence are removed after a reboot. The procedure to save such data in the CF card is described hereunder. It is strongly advised to re-enable EWF after disabling it for storing user data. EWF protects the OS but also the CF card itself.

#### **Procedure to disable EWF**

*(valid only for software release  $\leq$  0LBMXNF5107, 0LBMXN1F206)*

- press “start” button then “Run...” and type “cmd”
- on the console window type : “ewfmg c: - commitanddisable -live”
- wait for the command execution
- now the CF is write enable, so the modification are really stored into the CF card, meaning that modifications will be retained on reboot also if the CF is sets again to read only mode.
- after applying the desired modifications, enable the EWF (reboot is required for re-enable EWF).

*(valid only for software release  $\geq$  0LBMXNF5108, 0LBMXN1F207)*

- press “start” button then “Run...” and type “ewfd”
- the ProScribe will logout and reboot automatically
- now the CF is write enable, so the modification are really stored into the CF card, meaning that modifications will be retained on reboot.
- after applying the desired modifications, enable the EWF.

#### **Procedure to enable EWF**

*(valid only for software release  $\leq$  0LBMXNF5107, 0LBMXN1F206)*

- press “start” button then “Run...” and type “cmd”
- on the console window type: ewfmg c: -enable”
- wait for the command execution
- reboot (it is required for EWF to be really enabled)

*(valid only for software release  $\geq$  0LBMXNF5108, 0LBMXN1F207)*

- press “start” button then “Run...” and type “ewfe”
- the ProScribe will logout and reboot automatically
- now the CF is write disable, so modification are not stored into the CF card, meaning that modifications will be lost on reboot.

***CAUTION:*** *(valid only for software release  $\leq$  0LBMXNF5107, 0LBMXN1F206)*

*Reboot the ProScribe first and disable EWF before installing any new software. Installing software and disabling EWF afterwards is not supported by Windows XPe and results in some cases in a software crash.*

### 6.2.1 **STYLUS RE-CALIBRATION**

When the pad is powered on for the first time, the pad need to be calibrated.

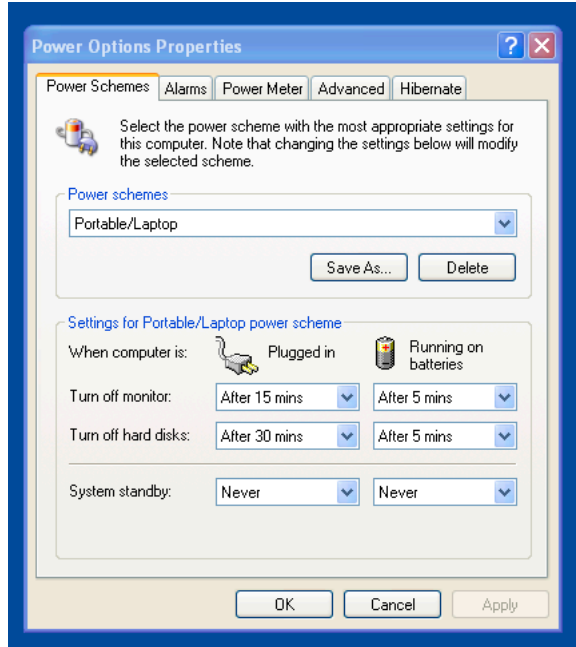
See par. 8.1.0 for instructions.

### 6.2.2 POWER SAVING MODE

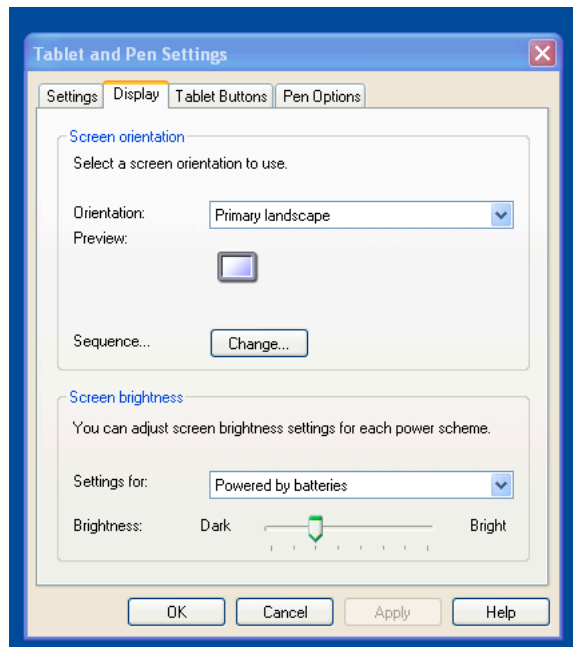
To make changes to power saving setup,

- Navigate through: “START -> Settings -> Control panel -> Power Options” and select the Power Schemes that best meets your needs.
- Navigate through: “START -> Settings -> Control panel -> Tablet and Pen Settings”.
- Select the “display” TAB
- Choose the desired Brightness level

#### Power Schemes



#### Display



### 6.2.3 SET DATA AND TIME

Double click on the screen display window on the task bar (in low to the right) set new data or time clock.

### 6.2.4 WLAN SETUP

The WLAN setup is strictly dependent on the existing wireless network infrastructure.

A example of WLAN setup is depicted:

- From the Winbond Wireless Utility icon on the Windows Taskbar select: “Start Windows Zero Configuration”

- Navigate through : **“START -> Settings -> Control Panel -> Network Connections -> Wireless Network Connection”** and select one of the available networks.
- If required, insert a network key or password.
- To further configure the WLAN parameters on the **“Wireless Network Connection” “Related Tasks”** panel, select **“Change advanced settings”**.
- The **“Wireless Network Connection Properties”** dialog pops up, select **“Wireless Networks”** tab
- Select the preferred network and press **“Properties”** to adjust the authentication / encryption parameters.

### **6.2.5 ETHERNET LAN SETUP**

Setting up an Ethernet connection is just a matter of plugging the Ethernet cable in the RJ45 jack. It is advised to switch off the WLAN connection in order to save battery power.

### **6.2.6 SCREEN BRIGHTNESS**

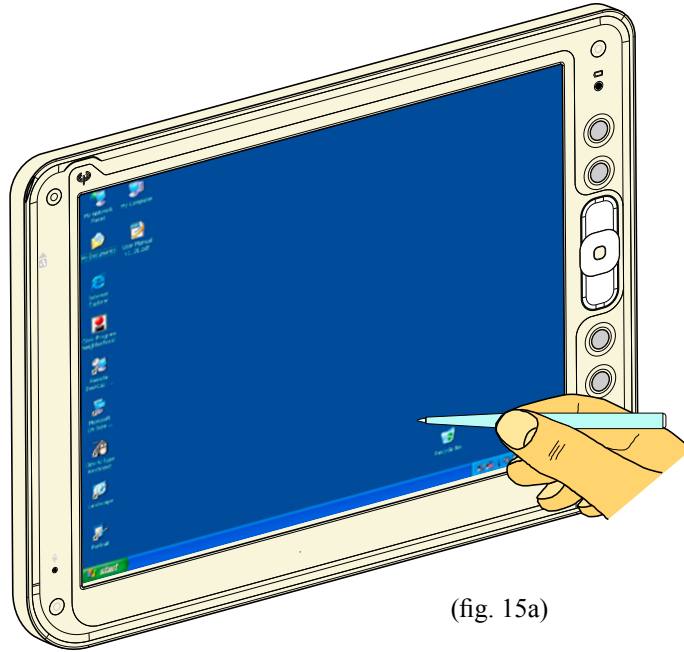
The brightness level can be adjusted by going to:

**“Control Panel > Tablet and Pen Settings > Display > Screen Brightness > Powered by Batteries”** and by moving the slide bar to **“Bright”**.

## 7.1.0 DATA INPUT TO THE TOUCH SCREEN

### 7.1.1 TOUCH THE SCREEN

Use a stylus pen to move the mouse cursor or select the desired desktop icon or menu.



(fig. 15a)

**NOTE:**

*The stylus pen is designed for your screen. The stylus pen can be provided upon customer request. Use of fingertip or other pointers could damage your screen.*

### 7.2.1 LEFT OR RIGHT CLICK EMULATION

Users accustomed to a mouse device often right click for quick access to command options for an icon. The stylus pen offers a similar command function.

Click on taskbar mouse icon to select “left” or “right” click emulation.

**NOTE:**

*default “left”*



(fig. 15b)



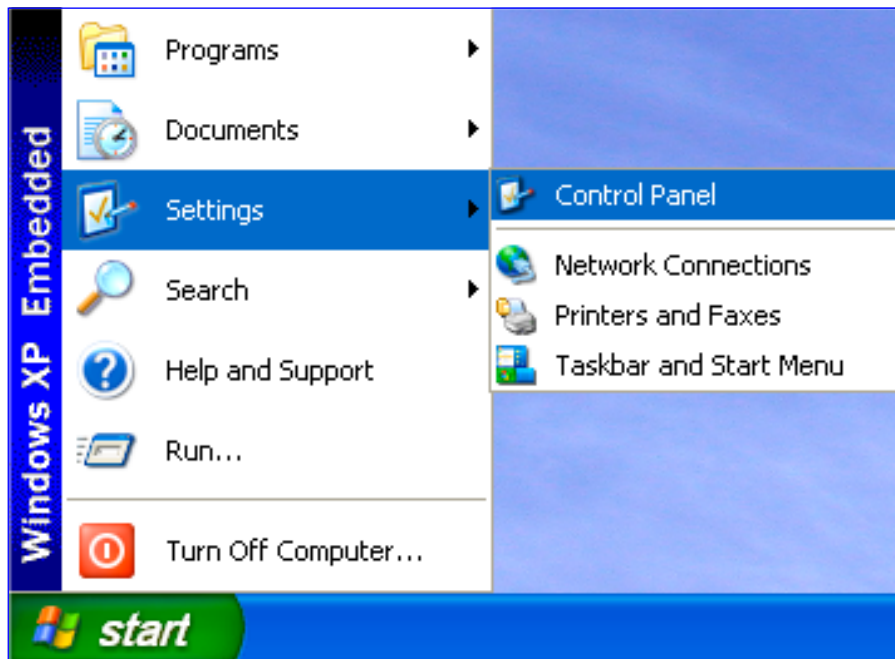
(fig. 15c)

## 8.1.0 TOUCH-PANEL CALIBRATION

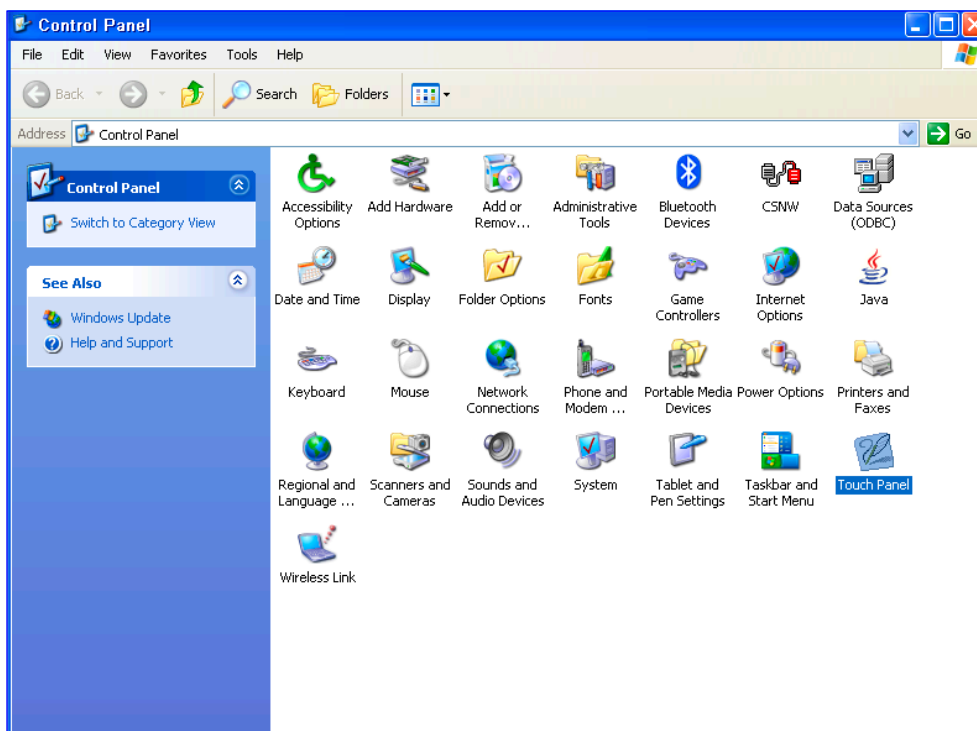
To calibrate the stylus tapping pattern:

- Tap Start -> Settings -> Control Panel
- Double click “Touch Panel” Button
- Select “Calibration” tab
- Enable the Check-Box -> Press “Apply” Button
- Disable the Check-Box -> Press “Apply” Button -> Press “Calibrate Now”
- Calibrate Touch-Panel
- Press “Update” Button
- Press “OK” button

Tap Start -> Settings -> Control Panel

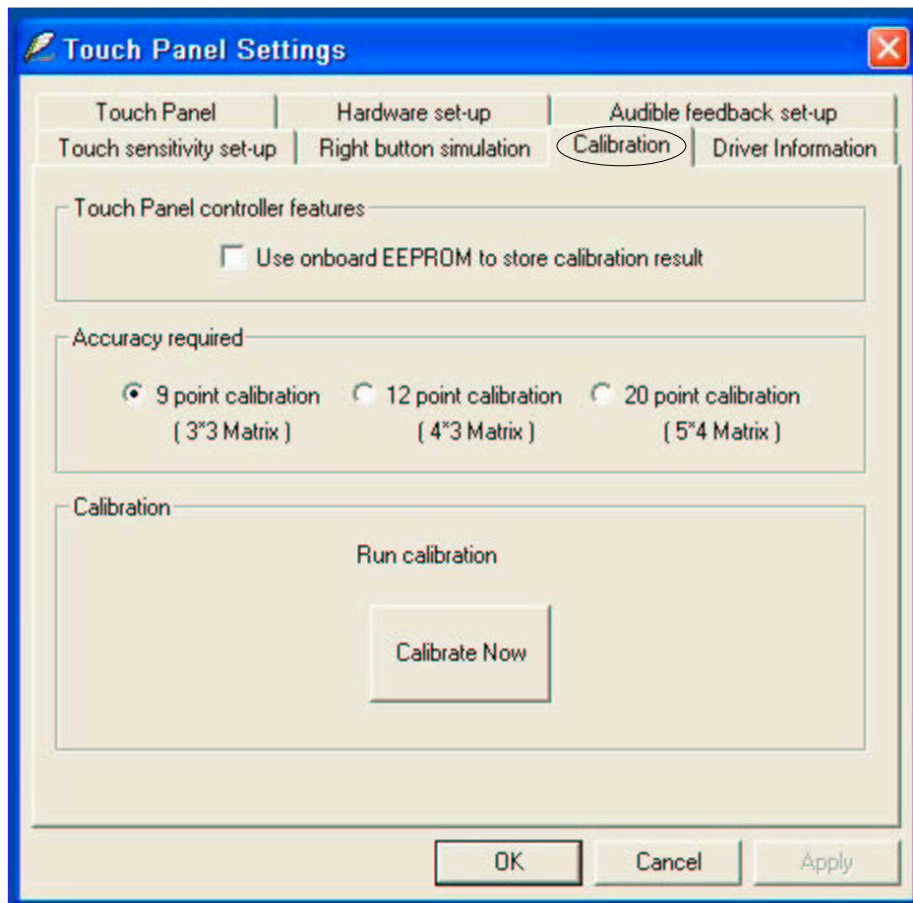


Double click “Touch Panel” Button

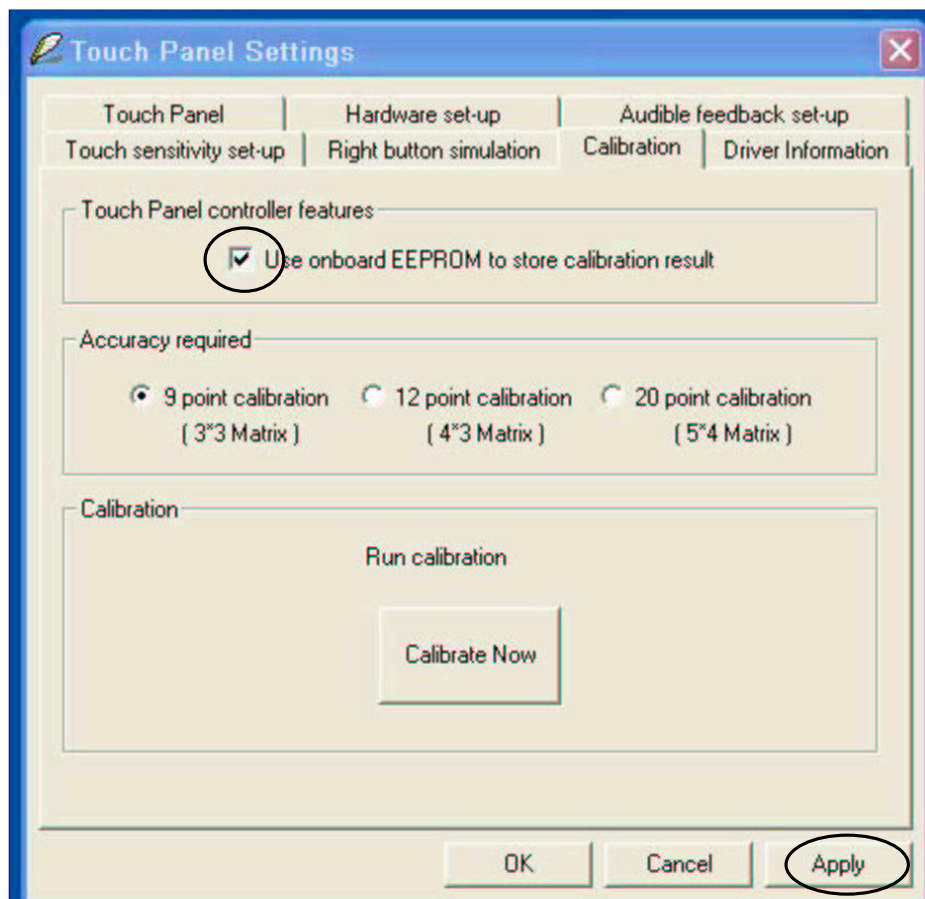




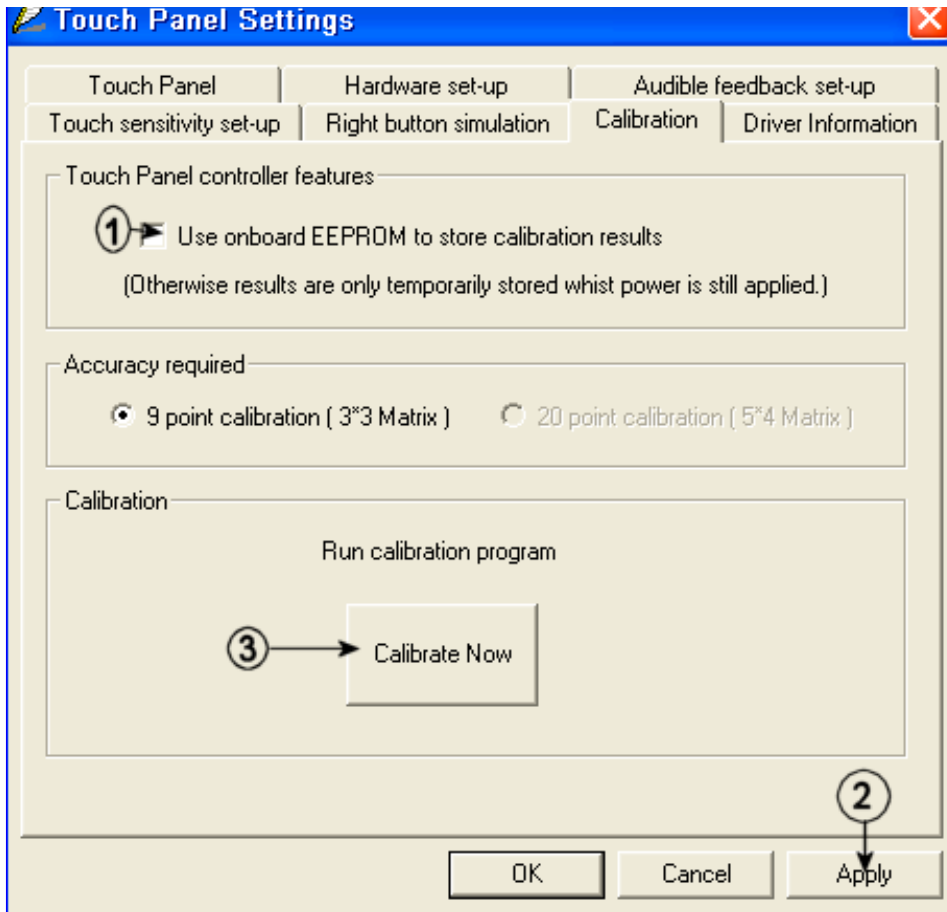
Select “Calibration” tab



Enable the Check-Box -> Press “Apply” Button



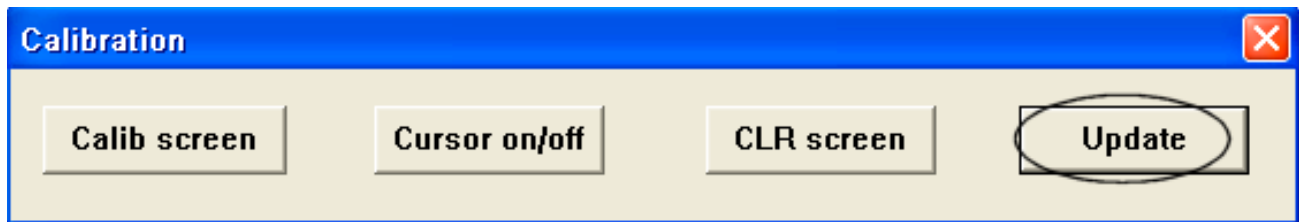
Disable the Check-Box -> Press “Apply” Button -> Press “Calibrate Now”



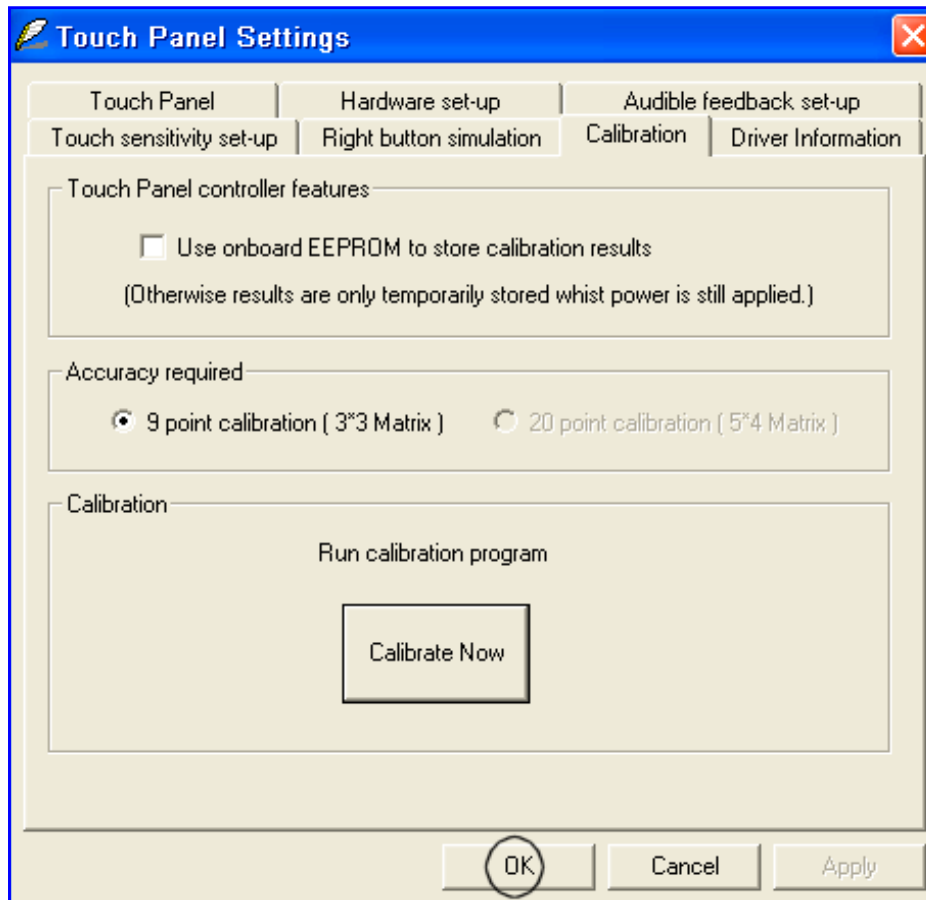
Calibrate Touch-Panel



Press “Update” Button



Press “OK” button



## 10.0.0 CONNECTING TO A NETWORK

You can setup a connection to a wireless network (WLAN) or a wired network (LAN).

### 10.1.0 WLAN

Your ProScribe includes a wireless LAN module.

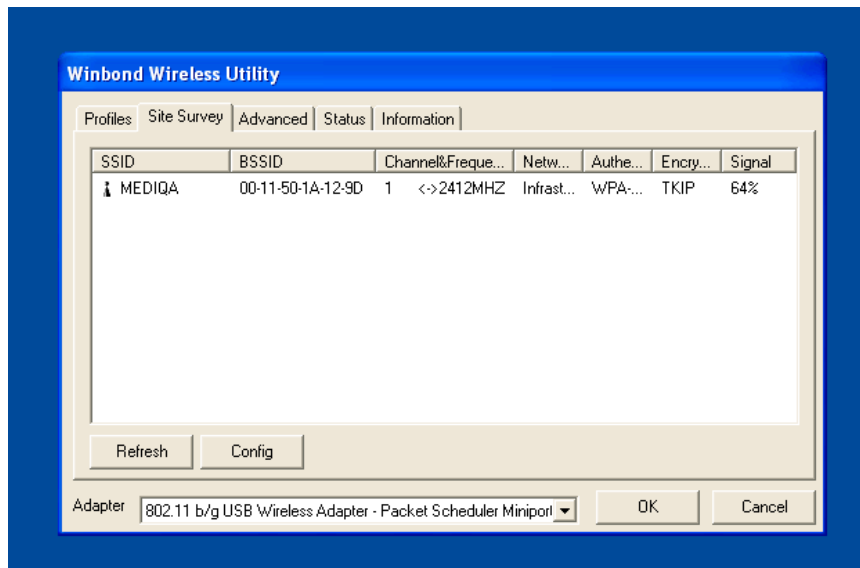
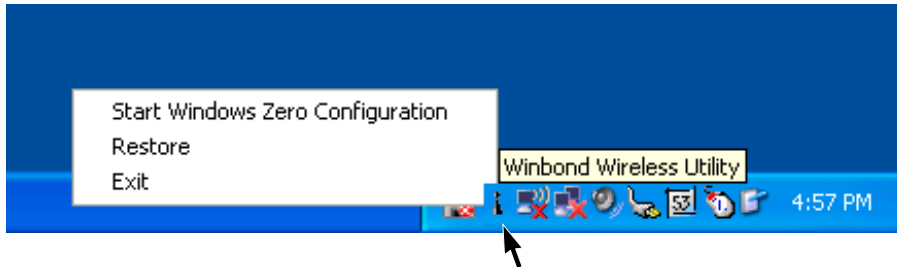
#### 10.1.1 START A CONNECTION

##### Method One

Tap (right click) on the WinBond network icon that resides in the taskbar at the bottom of your screen.

- Select “Restore”
- The “winbond wireless utility” pops-up
- Select the “Site Survey” tab
- Select one of the available networks

Press the “config” button to adjust the wireless network properties

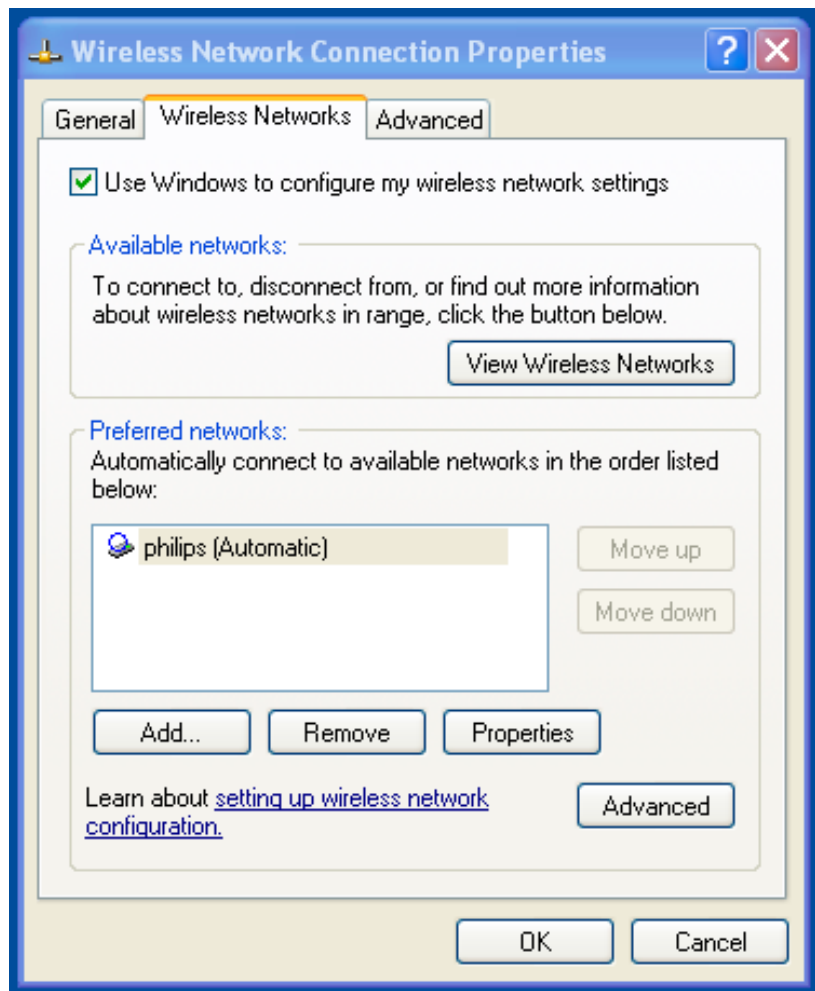
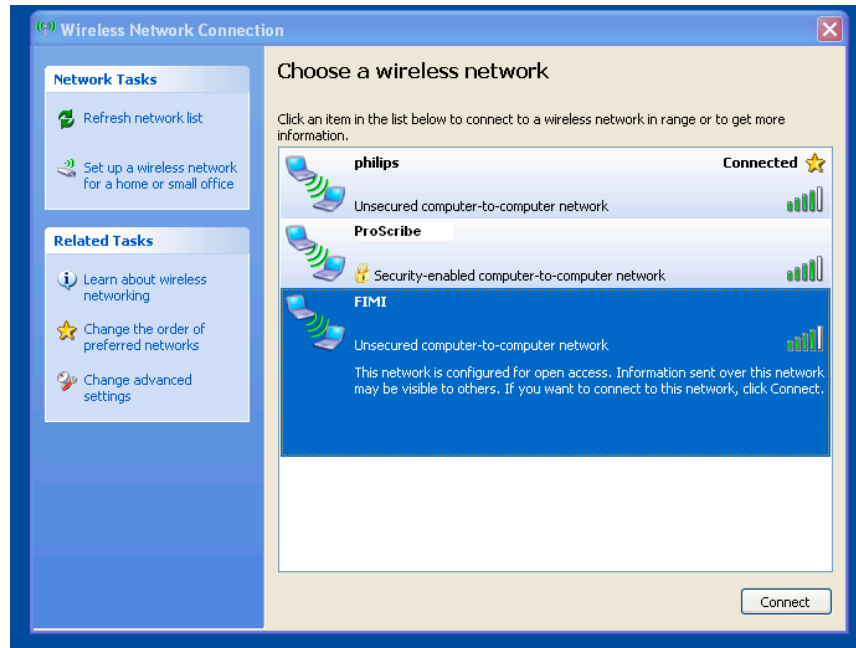


##### Method Two

The WLAN setup is strictly dependent on the existing wireless network infrastructure.

A example of WLAN setup is depicted:

- From the Winbond Wireless Utility icon on the Windows Taskbar select: “**Start Windows Zero Configuration**”
- Navigate through : “**START -> Settings -> Control Panel -> Network Connections -> Wireless Network Connction**” and select one of the available networks.
- If required, insert a network key or password.
- To further configure the WLAN parameters on the “**Wireless Network Connection**” “**Related Tasks**” panel, select “**Change advanced settings**”.
- The “**Wireless Network Connection Properties**” dialog pops up, select “**Wireless Networks**” tab
- Select the preferred network and press “**Properties**” to adjust the authentication / encryption parameters.



### 10.1.2

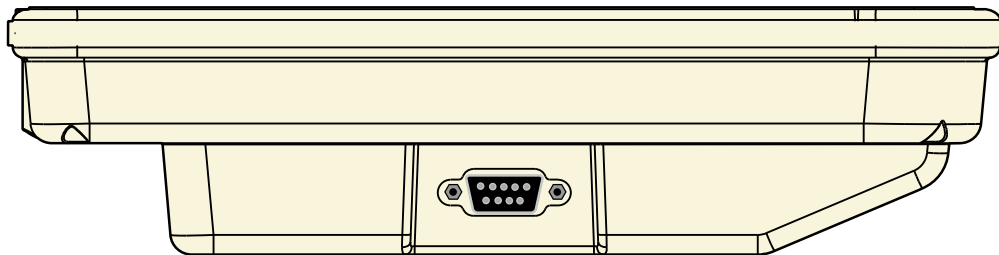
When the connection is ready, you may be required to launch a remote control application to communicate between your ProScribe and the host computer. The ProScribe ships with two applications to do this:

- Remote Desktop Connection connects to a Window server
- Citrix ICA Manager connects to a Citrix server.

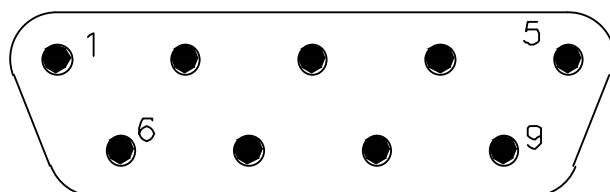
To complete the connections with Remote Desktop Connection or ICA Manager, you will need information including user name, password and network IP. Ask your network administrator to provide the required setup information.

### 10.2.1 LAN

The D-SUB 9 pins is used to connect your ProScribe to a LAN network.



Pinning definition for sub-D (male)



Pinning configuration

Pin	Signal	Pin	Signal
1	Screen (PE)	6	TX-
2	TX+	7	RX-
3	RX+	8	0 V
4	24 V	9	0 V
5	24 V		

(fig. 22a)

## **11.0.0 FEATURED SOFTWARE APPLICATIONS**

Your ProScribe has a suite of applications designed to create, share, and manage your information.

### **11.1.1 CONTROL PANEL**

The Control Panel provides access to system settings allowing you to manage the properties of your ProScribe such as:

- **Touch Panel**

Configures and calibrates your touch screen.

- **Display**

Sets your Background, Appearance, and Backlight Time Out preferences.

- **Tablet and Pen Settings**

Changes the screen brightness Power scheme

Changes ProScribe programmable buttons

- **Network Connections**

Selects and sets network properties.

- **System**

Displays your ProScribe system information.

### **11.2.1 MICROSOFT INTERNET EXPLORER**

Microsoft Internet Explorer is designed to provide a rich Internet experience while using a Windows powered device.

To launch:

- Tap on START
- Tap on PROGRAMS
- Tap on INTERNET EXPLORER

### **11.3.1 CITRIX ICA CLIENT**

The Citrix ICA (Independent Computing Architecture) permits server-based computing. The ICA protocol enables your ProScribe to function as a terminal when connected to a server running Citrix MetaFrame Software.

The Citrix ICA Client for Windows lets you make an ICA connection to a Citrix server. When the ICA connection is established, you can access applications and work with files as if you were working at the Citrix server itself.

- To launch Tap the “**Citrix Program Neighbourhood**” icon on the desktop

### **11.4.1 MICROSOFT RDP**

This is a terminal services client that allows you to connect your ProScribe to a Microsoft Windows terminal server.

- To launch Tap the “**remote desktop connection**” icon on the desktop

### **11.5.1 WINDOWS MEDIA PLAYER**

This is a multimedia application that plays audio and video files. For example, you can enjoy MP3 format music in or play a MPEG-4 format video clip from a file located on the pad or from the network.

- Tap on START
- Tap on PROGRAMS
- Tap on WINDOWS MEDIA PLAYER

## 11.6.1 HOT KEY UTILITY

There are 4 hot keys buttons to quick launch software applications. You can customize three of these hot keys functions with the tablet and pen settings applet:

- Navigate through: “**START -> Settings -> Control panel -> Tablet and Pen Settings**”
- Choose tablet buttons tab
- Select the tablet button
- Tap on the change button
- Tap OK to complete

### *NOTE:*

*Button “2” is not programmable*

*Default action:*

- *Button “1” -> None*
- *Button “3” -> None*
- *Button “4” -> None*

## 11.7.1 WORDPAD

Create, open and update WordPad files

## 11.8.1 CONNECTING EXTERNAL PERIPHERALS

The ProScribe is ready to go and does not need any additional peripheral to operate. The ProScribe can in case required be extended with virtually any type of external peripheral thanks to the built-in support of two USB ports

### *NOTE:*

*The Windows XP version of the ProScribe might not contain all the required components and drivers required to operate your peripherals. Please visit the website of the supplier to download the missing software items.*

## 11.9.0 RUGGEDIZED DESIGN

Your ProScribe is specially designed to withstand such as a physical impact or a liquid spill.

- Drop resistant  
It has the anti-shock design to resistant to 3 feet drop test (without the hand-carry set mounted: kickstand, hand strip left/right stand adapter).
- Liquid spill  
ProScribe meets IP21 requirement for water and dust resistance.



## 12.0.0 TROUBLESHOOTING

### 12.1.1 THE ProScribe WILL NOT TURN ON...

- When power is on, you will see:  
On the pad: Power indicator light above the screen on the right will turn green
- If power is on, but you still don't see anything on the screen, wake up the pad by tapping on the screen or by pressing control buttons located on the right hand side of the screen.
- If pad does not power on attach the AC adapter to the unit by either ;  
Plugging the AC adapter into the DC in that is the D-SUB 9 input, making sure that the Adapter is also plugged into the wall socket.
- If the preceding steps do not turn the pad on, try restarting the machine:  
As a last resort remove the power cord , wait ten seconds then insert again the power cord, to switch on the ProScribe or try to push the reset switch button located between the 2 USB ports.

### 12.2.1 MY SYSTEM DOES NOT RUN SMOOTHLY

Poor wireless signal quality or the simultaneous opening of too many applications will cause deterioration in application performance.

To free up memory, close applications that are not in use.

Check wireless signal quality:

- WLAN LED indicator. When the WLAN LED indicator is blue, a wireless signal is available. A blinking LED indicates a weak or unstable signal. When no signal is available, the LED is OFF. If signal is weak, try moving closer to your Access Point, or try repositioning the antenna of the access point.
- Network icon. Double tap the Network icon on the bar at the bottom of the screen. Choose the Wireless Information tab to show the current connection.

### 12.3.1 HOW DO I TURN OFF MY ProScribe

To end operation: Press the power switch on the upper right side.

Or tap the “START Menu” and then choose “Shut Down” to turn off the pad.

#### **NOTE:**

*Pressing the Power switch of the device for more than five seconds will make an hard turn Off preventing the Operating System to perform the correct shutdown procedure.*

### 12.4.1 WHEN I USE THE STYLUS PEN...

- System does not respond to taps...
  - a. Try tapping the center of an icon.
  - b. Re-calibrate the tapping pattern.

#### **NOTE:**

*You might need to practice a couple of time in to operate your screen with taps.*

- The mouse arrow is out of alignment...  
The mouse arrow does not point to the center of icon as you intend. It might be due to the viewing angle or the stylus may require calibration.
- Users accustomed to a mouse device use a right click for quick access to command options of an object.  
The stylus pen offers a similar command function. Here's how: See parag. 7.2.1

---

## **13.0.0 SAFETY AND PRODUCT CARE INSTRUCTIONS**

### **13.1.1 TO CLEAN THE SCREEN:**

1. To remove dust and other particles, wipe the screen with a clean, soft, lint-free cloth.
2. For heavy duty cleaning, wipe the screen with a soft, clean cloth lightly sprayed with a commercial window cleaner that does not contain wax or abrasives. Always apply the cleaner to the cloth, not the screen.  
If the display contains has become greasy, substitute use isopropyl alcohol.

#### ***NOTE:***

*Paper towels and other paper products are abrasive. Be sure to use a clean cloth when wiping the screen.*

### **13.2.1 TO CLEAN THE CASE:**

1. For normal cleaning, use a soft, dry cloth.
2. For heavy duty cleaning, apply a small amount of a mild non-abrasive, ammonia-free, alcohol-free detergent onto a clean, soft, lint-free cloth and wipe the case surface.

## **13.0.0 PRECAUTIONS**

### **13.1.0 Installation**

The equipment should be installed near an easily accessible outlet.

Do not install or leave the monitor:

In places subject to extreme temperatures, for example near a radiator, heating vent, or in direct sunlight. Subjecting the LCD monitor to extreme temperatures, could cause deformations of the casing or malfunctions.

In places subject to mechanical vibration or shock.

Near any equipment that generates a strong magnetic field, such as a TV or various other medical appliances.

In places subject to inordinate amounts of dust, dirt, or sand, for example near an open window or an outdoor exit.

If setting up temporarily in an outdoor environment, be sure to take adequate precautions against airborne dust and dirt.

Otherwise irreparable malfunctions could occur.

### **13.2.0 Handling**

Do not press on or scratch the LCD screen. Do not place a heavy object on the LCD screen. This may cause the screen to lose uniformity or cause LCD panel malfunctions.

If the monitor is used in a cold place, a residual image may appear in the screen. This is not a malfunction.

The screen returns to normal as the temperature rises to a normal operating level.

If a still picture is displayed for a long time, a residual image may appear for a while. The residual image will eventually disappear.

The LCD panel becomes warm during operation. This is not a malfunction.

Allow adequate air circulation to reduce the LCD panel temperature (eg. on the desk keep it in the base station)

### **13.3.0 Maintenance**

Be sure to unplug the power cord from the mains when cleaning your device.

The front polarizer can be easily damaged. Take care not to scratch the front surface with any hard or abrasive material. Dust, finger marks, grease etc. can be removed with a soft damp cloth (a small amount of mild detergent can be used on the damp cloth). Do not apply water or detergent directly to the front surface as this may cause staining or damage the electronic components. Never use any solvent on the front polarizer or module as this may cause permanent damage. Wipe off water drop immediately. Long contact with water may cause discoloration spots. When the panel surface is soiled, wipe it with absorbent cotton or other soft cloth.”

### **13.4.0 Transportation**

Disconnect all cables from the monitor when transporting.

When you transport this device, hold the base sections of the display stand firmly in both hands. If you drop the device, you may be injured or the monitor may be damaged.

When you transport this device for repair or shipment, use the original cardboard box and packing materials.

## 14.1.0 DISPOSAL OF THE LCD ProScribe

*Do not dispose of this monitor with general household waste.*

*The fluorescent tube used in this LCD monitor contains mercury. Disposal of this monitor must be carried out in accordance with the regulations of your local sanitation authority.*

- *For countries in the European Union*



This symbol indicates that this product (including the cables, plugs and accessory) must not be disposed of with the other household waste. Instead, it is your responsibility to dispose of your waste equipment by handing it over to a designated collection point for the collection of waste electrical and electronic equipment. The separate collection and recycling of your waste equipment at the time of disposal will help to conserve natural resources and ensure that it is recycled in a manner that protects human health and the environment. For more information about where you can drop off your waste equipment for recycling, please contact your local city office, or your supplier's office.

- *For countries outside the European Union*

Disposal of electrical products in countries outside the European Union should be done in line with local regulations.

### 14.1.1 Dispose of coin battery inside of the ProScribe (Mounted on main board):

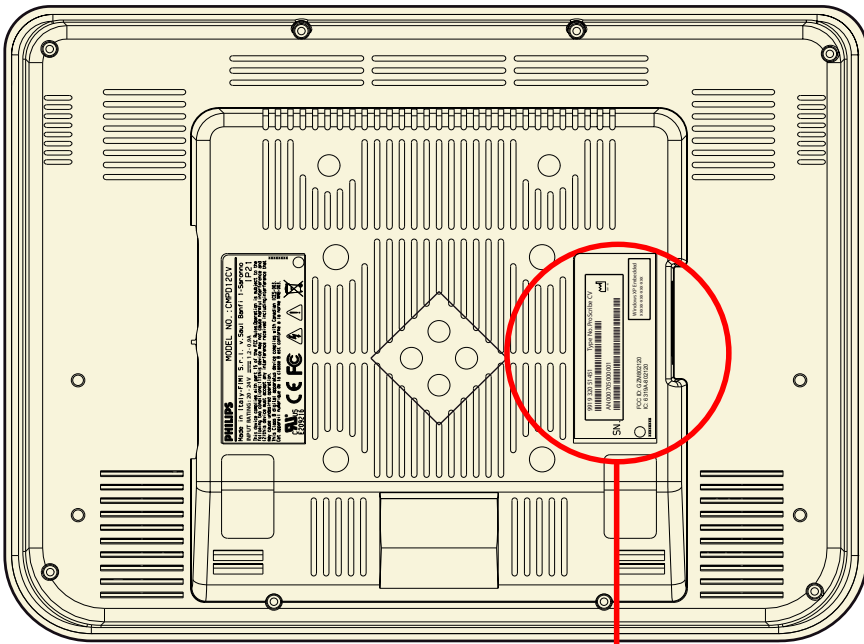
The coin battery contain Perchlorate Material-special handling may apply,

See [www.dtsc.ca.gov/hazardouswaste/perchlorate](http://www.dtsc.ca.gov/hazardouswaste/perchlorate).



## 15.0.0 IDENTIFICATION LABEL

The identification label is visible on the back monitor side.



Code number (12NC)	9919 320 51451	ProScribe CV		Type number
				
	AN00yyww001001		2007 - 02	Date of Manufactured
				

Serial number:  
**AN**=Origin code (FIMI)  
**00** = Technical level  
**yy**= Year (07=2007)  
**ww**= Week (01 to 52)  
**001001**= progressive number

# INDEX

## B

BEFORE YOU BEGIN 12

## C

CONNECTING TO A NETWORK LAN 22

START A CONNECTION 20

WLAN 20

CONNECTING TO A NETWORK 20

CONTROL PANEL DESCRIPTION 11

## D

DATA INPUT TO THE TOUCH SCREEN 15

LEFT OR RIGHT CLICK EMULATION 15

TOUCH THE SCREEN 15

DIMENSIONS 8

DISPOSAL OF THE LCD ProScribe 28

## F

FEATURED SOFTWARE APPLICATIONS

CITRIX ICA CLIENT 23

CONNECTING EXTERNAL PERIPHERALS 24

CONTROL PANEL 23

HOT KEY UTILITY 24

MICROSOFT INTERNET EXPLORER 23

MICROSOFT RDP 23

RUGGEDIZED DESIGN 24

WINDOWS MEDIA PLAYER 23

WORDPAD 24

FEATURED SOFTWARE APPLICATIONS 23

## G

GETTING STARTED 12

ETHERNET LAN SETUP 14

POWER SAVING MODE 13

SCREEN BRIGHTNESS 14

SET DATA AND TIME 13

STYLUS RE-CALIBRATION 12

WLAN SETUP 13

## I

IDENTIFICATION LABEL 29

INPUT INSTRUCTION 9

BACK VIEW 10

LEFT VIEW 9

RIGHT VIEW 9

INSTALLATION 7

INTRODUCTION 4

Approved for medical applications 4

Easy to integrate, deploy and maintain 4

Flexible to fit any vertical application 4

Main features 4

## P

POWER SAVING MODE 13

PRECAUTIONS 27

Handling 27

Installation 27

Maintenance 27

Transportation 27

## S

SAFETY AND PRODUCT CARE INSTRUCTIONS 26

TO CLEAN THE CASE 26

TO CLEAN THE SCREEN 26

STYLUS RE-CALIBRATION 12

## T

TECHNICAL INFORMATION 6

TOUCH-PANEL CALIBRATION 16

TROUBLESHOOTING 25

HOW DO I TURN OFF MY ProScribe 25

MY SYSTEM DOES NOT RUN SMOOTHLY 25

THE ProScribe WILL NOT TURN ON... 25

WHEN I USE THE STYLUS PEN... 25

## W

WEIGHT 8

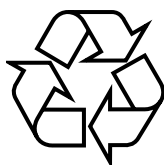


Specifications subject to change without notice.  
All dimensions shown are approximate.

Copyright © 2007 FIMI S.r.l. Saronno - Italy

All rights are reserved. Reproduction in whole or in part is prohibited without the written consent of the copyright owner

Printed in Italy



**4519 206 1019.1**

