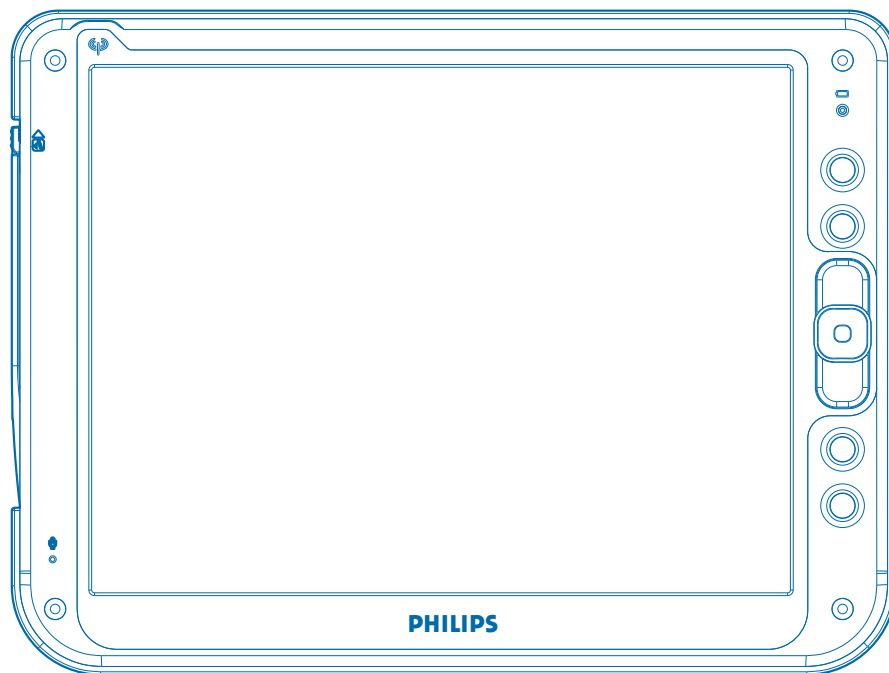


PHILIPS

User Manual



WI121 series

12 inch Wireless Thin Client

ProScribe

CE

Copyright ©

This manual is copyrighted with all rights reserved. Under the copyright law, this manual may not be copied, in whole or part, without written consent of Philips. Under the law, copying includes translating into another language or format. The monitor described in this manual, has been certified/registered by the safety agencies/regulatory authorities as model n° : CMPD12-I

FCC Notice

This equipment has been tested and found to comply with the limits for a class B digital device, pursuant to Part 15 of FCC Rules. These limits are designed to provide reasonable protection against harmful interference in a residential installation.

This equipment generates, uses and can radiate radio frequency energy and , if not installed and used in accordance with the instructions, may cause harmful interference to radio communications.

However, there is no guarantee that interference will not occur in a particular installation.

If this equipment does cause harmful interference to radio or television reception, while can be determined by turning the equipment Off and On, the user is encouraged to try to correct the interference by one or more of the following measures.



- Reorient or relocate the receiving antenna.
- Increase the separation between the equipment and receiver.
- Connect the equipment into an outlet on a circuit different from that to which the receiver is connected.
- Consult the dealer or an experienced radio TV technician for help.

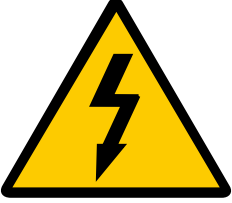
Modification

The FCC requires the user to be notified that any changes or modifications made to this device that are not expressly approved by the manufacturer may void the user's authority to operate the equipment.


Cables

Connections to this device must be made with shielded signals cables with metallic RFI/EMI connector hoods to maintain compliance with FCC Rules and Regulations.

-  The lightning flash with arrowhead symbol is intend to alert the user of the presence of uninsulated “dangerous voltage” within the product’s enclosure that may be sufficient magnitude to constitute a risk of electrical shock to people.
-  The exclamation mark is intended to alert the user of the presence of important operating and maintenance (servicing) instructions in literature accompanying the appliance.



CAUTION
RISK OF ELECTRICAL SHOCK
DO NOT OPEN
ATTENTION
RISQUE DE CHOC ELECTRIQUE
NE PAS OUVRIR



**CAUTION: TO AVOID THE RISK OF ELECTRICAL SHOCK.
DO NOT REMOVE COVER (OR BACK)
NO USER SERVICEABLE PARTS INSIDE
REFER SERVICING TO QUALIFIED SERVICE PERSONNEL**

WARNING:

THE ENCLOSURE HAS TO BE CHECKED UPON COLLISION DAMAGE; REFER TO QUALIFIED SERVICE PERSONNEL

PROSCRIBE MONITOR, ACCESSORY DOCKING STATION AND AC/DC POWER ADAPTER DO NOT HAVE APPLIED PARTS, AND ARE NOT INTENDED TO BE CONNECTED TO A PATIENT CIRCUIT.

RF Exposure Statement

This EUT is compliance with SAR for general population / uncontrolled exposure limits in ANSI/IEEE C95.1-1999 and had been tested in accordance with the measurement methods and procedures specified in OET bulletin 65 Supplement C.

This equipment complies with FCC radiation exposure limits set forth for an uncontrolled environment. In order to avoid the possibility of exceeding the FCC radio frequency exposure limits, human proximity to the antenna shall not be less than 1.5 cm during normal operation.

This device and its antenna (s) must not be collocated or operating in conjunction with any other antenna or transmitter.

INTRODUCTION

A ruggedized wireless thin client display for the on-the-go computing

The Philips ProScribe is a ruggedized wireless thin client display, released with Windows XP embedded for the on-the-go computing, for ITE application.

The ProScribe suits all applications in to vertical markets where users meet to take it with them, while away from their desk. It's a "cordless display" which makes use of wireless technology and thin-client computing to allow mobile workers to access applications stored on a central server as if they were sitting behind their desktop monitor. Its ruggedized design, compact size and touch-screen interface makes it also a perfect solution for point of information and system control applications too.

Designed for any organization with highly mobile employees

The ProScribe can be of benefit for any organization employing mobile work forces like factory supervisors, field service engineers and retail sales employees to name but a few. The ProScribe gives such employees instant and hand-held access to accurate data any time anywhere.

Made to be mobile

With a 1GHz Intel Celeron M-based x86 processor as its engine and Microsoft Windows XP embedded as operation system, the ProScribe offers a technologically powerful platform for mobile computing in enterprise applications. Other main features are:

- 12.1 inch TFT-LCD with Touch-screen functionality;
- 1024x768 resolution (XGA);
- display emulated keyboard;
- integrated WiFi™ 802.11b/g/n wireless LAN
- lightweight (1,75kg);
- replaceable battery
- upright stand and hand-carrying-strap.

Rugged design for the toughest environments

The ProScribe is compliant with industry standards for liquid and dust resistance (IP53) and is also physically tough, with a highly durable build capable of surviving a drop from as high as one meter onto a concrete surface.

Easy to integrate, deploy and maintain

The ProScribe allows users to take full benefit of thin-client computing where data and applications are kept on a server where they can be managed centrally, more securely and at lower total cost. Nearly no downtime is incurred in case a device is lost or stolen: a new ProScribe straight from the box allows a user to resume an interrupted login session exactly as before.

Server access is provided by one of the two pre-installed thin clients, Microsoft Remote Desktop Protocol (RDP), or Internet Explorer.

Flexible to fit any vertical application

The ProScribe offers a full suite of utilities and multiple plug-and-play interfaces for easy integration into any type of IT environment, and specifically:

- Full-size XGA resolution
- Basic version with 512MB RAM and 2GB flash memory
- Extended version with 512MB RAM and 40GB Hard Disk
- Two USB ports
- One 32 bits PCMCIA expansion slot
- An 100Mbps RJ-45 Ethernet interface

Docking station for easy charging and desktop use

The ProScribe optional docking station enables simple recharging of the device's smart Li-ion battery pack. In typical usage a full charge will enable up to 3 hours operation. The docking station includes two USB sockets enabling convenient use of keyboard and mouse, while the portable device is docked. An additional Ethernet port makes the docking station perfectly suited to desktop usage.

Unit shall be used, in all modes of power supply (battery , ac/dc adapter or docking station modes), only if battery-pack is in place.

NOTES:

- 1 - WiFi and the WiFi logo are the registered trademarks of the Wi-Fi Alliance.
- 2 - Microsoft and Windows, Windows XP and Windows RDP are registered trademarks of Microsoft Corporation
- 3 - All other trademarks and registered trademarks are property of their respective owners.

TECHNICAL INFORMATION7
INSTALLATION8
KICKSTAND AND HAND STRIP9
DIMENSIONS10
WEIGHT10
INPUT INSTRUCTION11
 right view11
 left view11
 bottom view12
 back view12
CONTROL PANEL DESCRIPTION13
BEFORE YOU BEGIN14
GETTING STARTED14
 load battery14
 stylus re-calibration15
 power saving mode15
 set data and time15
 WLAN setup16
 ethernet LAN setup16
 screen brightness16
DATA INPUT TO THE TOUCH SCREEN17
 touch the screen17
 left or right click emulation17
 on-screen keyboard17
 sizeable keyboard18
 screen rotation18
TOUCH-PANEL CALIBRATION19
POWER SUPPLY23
 AC23
 battery23
CONNECTING TO A NETWORK24
 WLAN24
 start a connection24
 LAN26
FEATURED SOFTWARE APPLICATION27
 control panel27
 microsoft internet explorer27
 microsoft RDP27
 windows media player27
 hot key utility28
 wordpad28
 connecting external peripherals28
 VGA port28
 ruggedized design28
TROUBLESHOOTING29
 the ProScribe will not turn ON29
 my system does not run smoothly29
 how do i turn off my ProScribe29
 when I use the stylus pen29
 how do I use the on-screen keyboard29
 how do I use a password to protect my data30
SAFETY AND PRODUCT CARE INSTRUCTIONS30
 to clean the screen30
 to clean the case30
PRECAUTIONS31
 installation31
 handling31
 maintenance31
 transportation31
 disposal of the LCD monitor32
ACCESSORY (Optional)33
IDENTIFICATION LABEL34
INDEX35

1.1.0 TECHNICAL INFORMATION

Processor	INTEL Celeron M 1GHz
Chipset	INTEL 852GM+ ICH4-M
Graphic processor	INTEL 852GM
Bios	Insyde software
Operating System	Microsoft Windows XP Embedded with SP2
Networking	Built-in 802.3 network card (Intel PRO/100 VE) Built-in 802.11 b/g/n WLAN module with double integral antenna Built-in Bluetooth 2.1 (Optional)
Remote Protocol	Microsoft RDP
Memory	512 MB SDRAM on board
Flash ROM	2 GB flash memory module (WI121XB version) ≥ 40 GB Hard Disk memory module (WI121XH version)
LCD Panel Characteristic	12.1 “ TFT LCD panel (XGA 1024 x 768 resolution) , LVDS I/F
Audio System	VIA VT1612A AC’97 Codec. Internal mono microphone (stereo supported via microphone jack) Internal stereo speaker
Durability	Rugged anti-shock design with standing 1 meter drop / IP53 water and dust resistant construction (front side)
Mounting	Four standard VESA 75 mount holes on the rear cover.
PAD I/O	<ul style="list-style-type: none">● 1 x VGA out● 2 x USB ports● 1 x Network connector (RJ45)● 1 x Audio jack for external earphone● 1 x PCMCIA slot● 1 x Docking connector● 1 x DC-in connector● 1 x Audio jack for external microphone
Docking device I/O	<ul style="list-style-type: none">● 1 x DC-in connector● 1 x PAD connector● 3 x USB ports● 1 x Network connector (RJ45)
LED indicator	<ul style="list-style-type: none">● 1 x WLAN LED● 1 x Power LED
Button AND Controls	<ul style="list-style-type: none">● 4 x Customized hot key● 1 x Input panel (touch screen)● 1 x Track pointer● 1 x Power switch
Battery Pack	<ul style="list-style-type: none">● Swappable smart Li-ion battery 14,8V (2400mAh)
Power Supply	<ul style="list-style-type: none">● AC_IN 100 ~ 240V (1,5A) 50/60Hz - DC_Out 19V (3.42A)
Included Accessory	<ul style="list-style-type: none">● Battery● AC adapter and power cords● 1 x Stylus● Hand strap● Kickstand
Optional accessories	<ul style="list-style-type: none">● Docking station

2.1.0 INSTALLATION

Before unpacking the ProScribe, prepare a suitable workspace. You need a stable and level surface near a grounded wall outlet in an area that is relatively free of glare from sunlight or other sources of bright light.

While unpacking the ProScribe, inspect it and other package contents for shipping damage that could cause a fire or shock hazard. Immediately report any shipping damage to the carrier or transportation company and contact customer service for assistance. Keep all packing material in case you need to ship, store or return the monitor.

After unpacking the ProScribe, make sure the following items are included:

WI121XB

- PAD (512 / 2GB)
- IT-grade AC adapter
- Power Cord set (EU and US cords)
- Battery pack
- Stylus pen
- Hand-carry set

WI121XH

- PAD (512 / \geq 40GB)
- IT-grade AC adapter
- Power Cord set (EU and US cords)
- Battery pack
- Stylus pen
- Hand-carry set

NOTE:

This user's manual is available in electronic format only, installed on the PAD and accessible by double click up on the relevant icon on the desktop

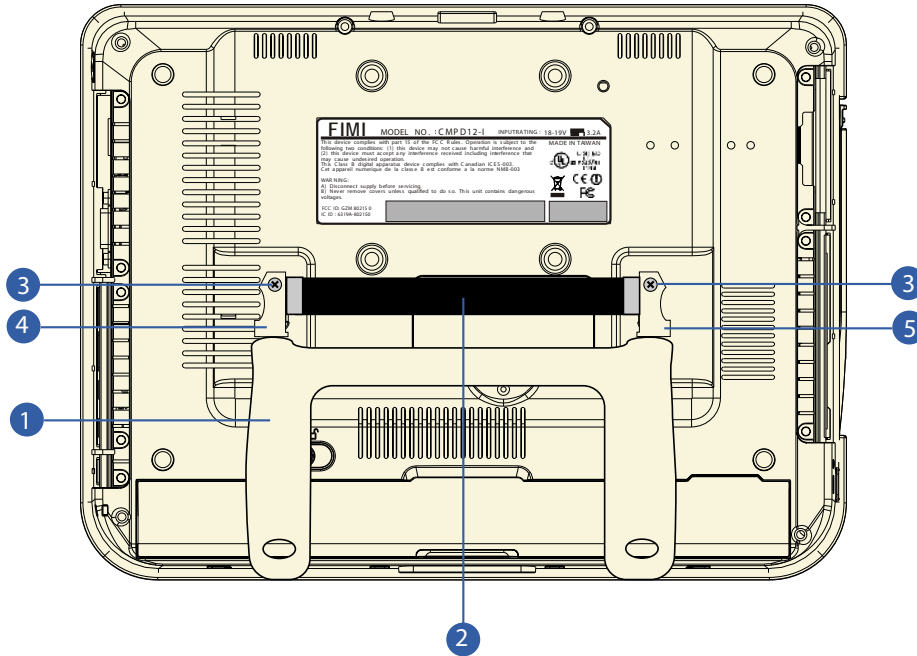
CAUTION:

When moving the PAD from a cold place to a warm one, or vice versa, moisture may condense inside of the PAD or Cradle. Should this occur, the devices may not operate properly. In such a case an adequate recovery time is necessary to allow the moisture evaporate (about 1hr).

2.2.0 INSTALLATION KICKSTAND AND HAND STRIP

The ProScribe is provided of a hand-carry set (Hand strip and Kickstand) for the assembling see fig. 9a

1. Kickstand
2. Hand strip
3. Screw M2,5x8 (q.ty 2)
4. Left stand adapter
5. Right stand adapter



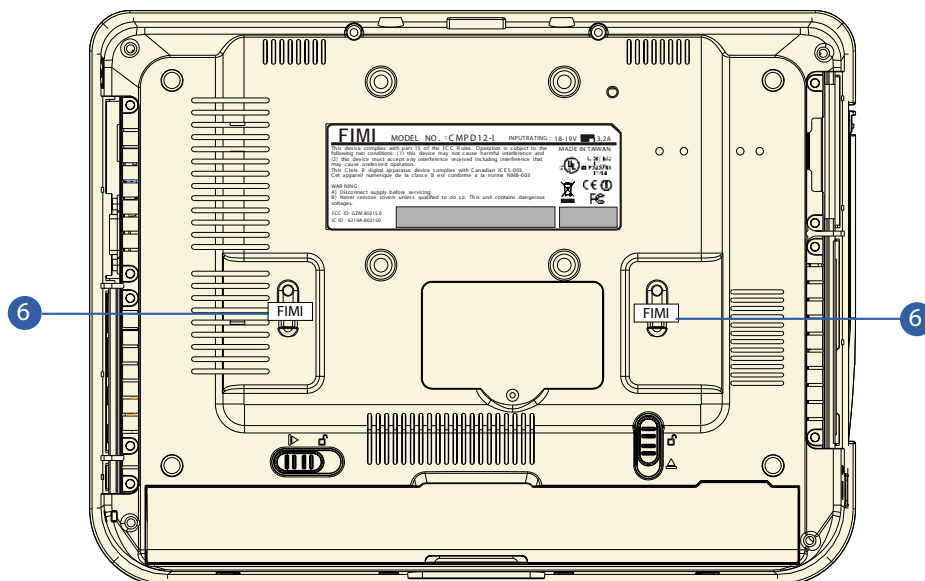
(fig. 9a)

NOTE:

Mounting the hand-carry set, you will break the FIMI security label (fig. 9b) posted on the relevant fixing points. Please note that the device cannot with stand drop test when the hand-carry set is mounted.

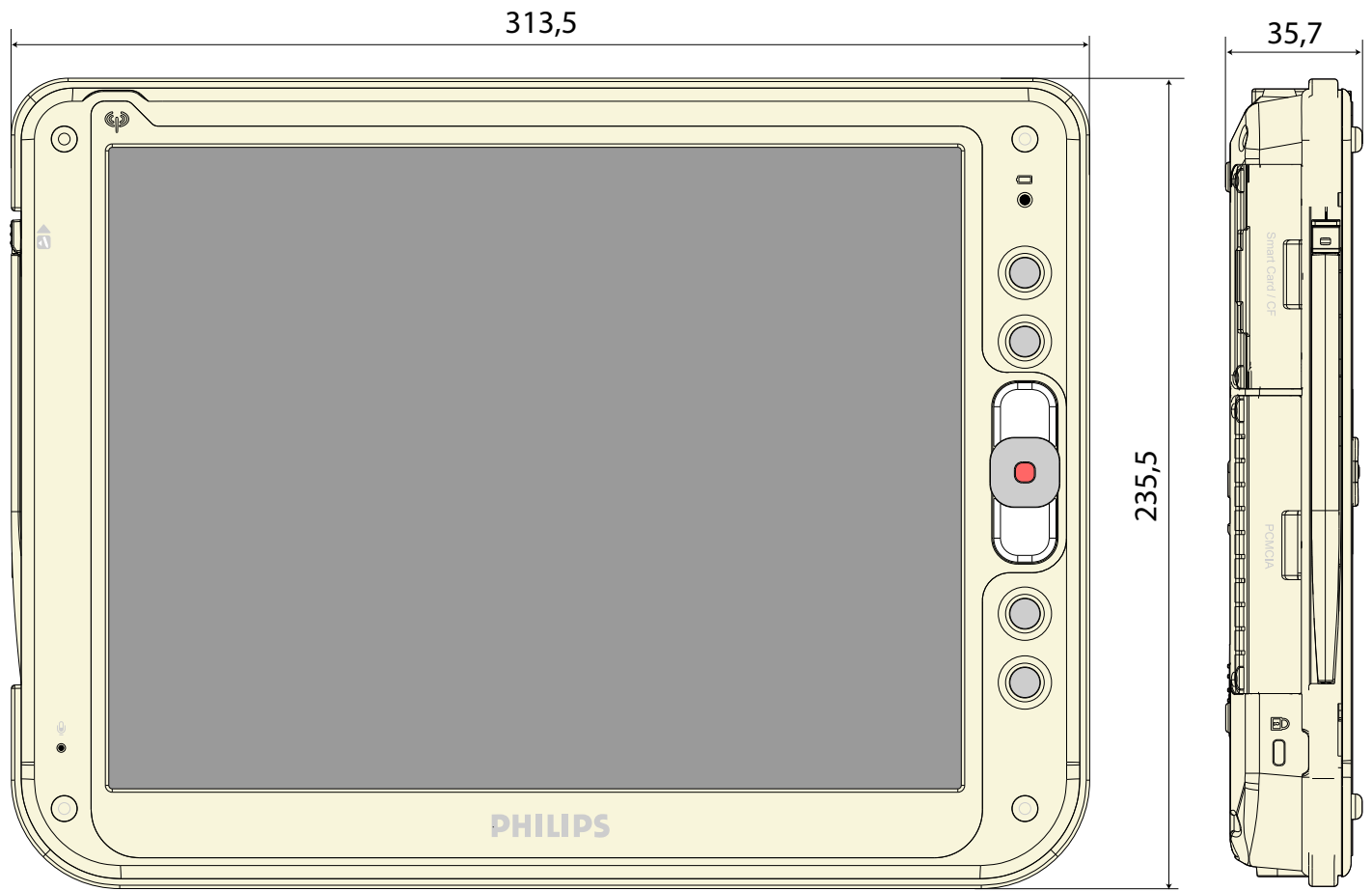
In such a situation, user has to take maximum care while handling the PAD, in order to prevent it from dropping and consequently being damaged.

6. Security label



(fig. 9b)

3.1.0 DIMENSIONS



(fig. 10a)

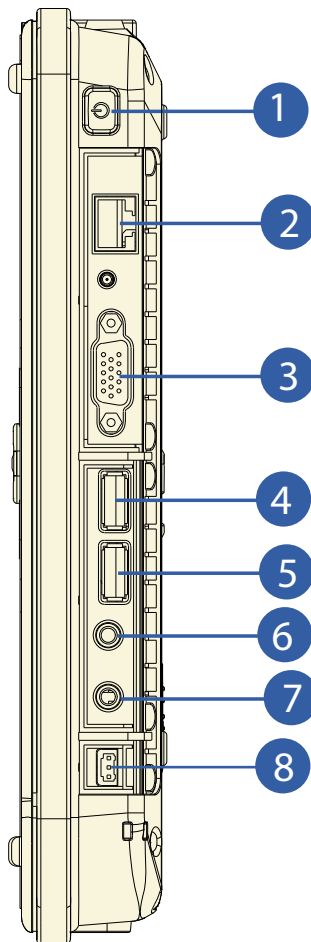
3.2.0 WEIGHT

Weight with battery enclosed : 1,75 Kg.

4.1.0 INPUT INSTRUCTION

4.1.1 RIGHT VIEW

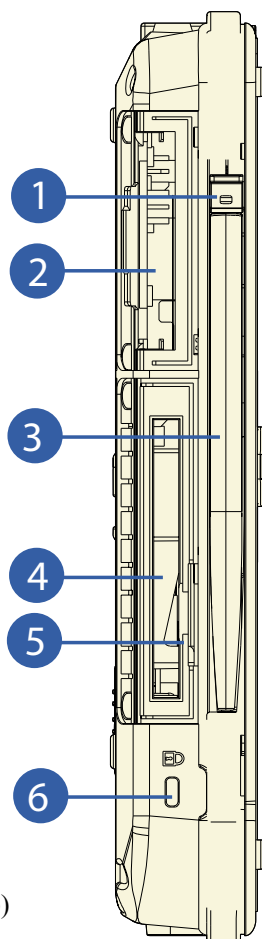
1. Power button
2. Network connector (RJ45)
3. VGA video connector
4. USB 2.0 port type A
5. USB 2.0 port type A
6. External ear set jack
7. External microphone jack
8. AC/DC adapter connector



(fig. 11a)

4.1.2 LEFT VIEW

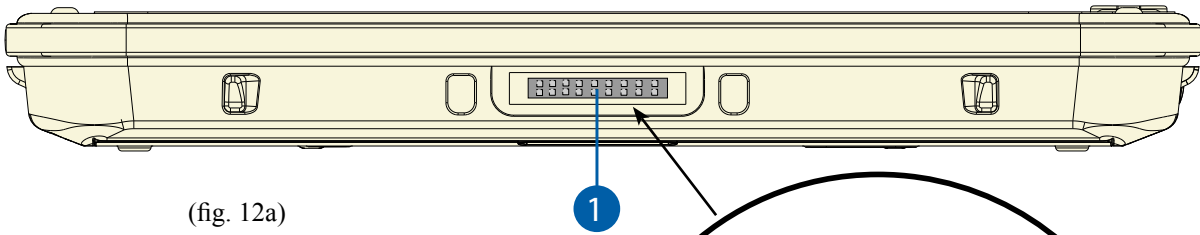
1. Stylus pen latch release
2. Flash card slot / Hard Disk
3. Stylus pen
4. PCMCIA slot
5. SD card slot (Optional)
6. Security cable slot



(fig. 11b)

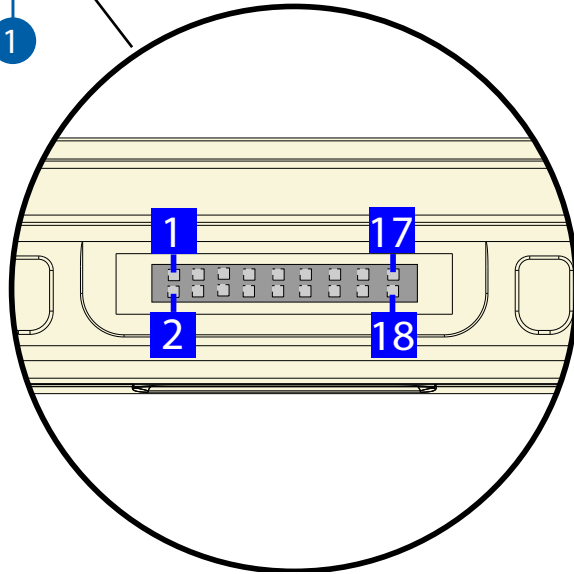
4.1.3 BOTTOM VIEW

1. Docking device connector



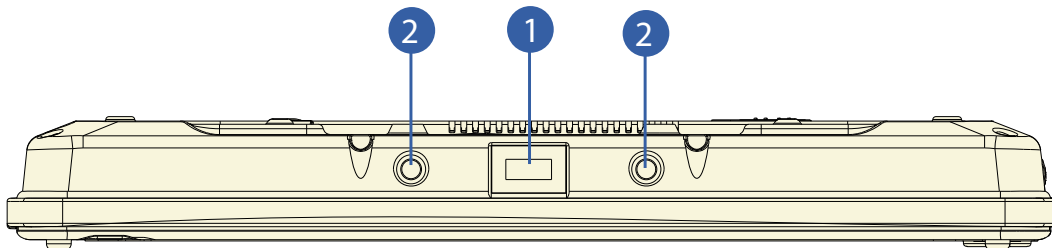
Connector layout:

- Pin 1 : MAIN_IN
- Pin 2 : GND
- Pin 3 : USB20P2-
- Pin 4 : CRADLE_AV (+19V)
- Pin 5 : USB20P2+
- Pin 6 : CRADLE_AV (+19V)
- Pin 7 : TXD2
- Pin 8 : CRADLE_AV (+19V)
- Pin 9 : RDX2
- Pin 10 : CRTHSYNK01
- Pin 11 : DSR2-
- Pin 12 : CRTVSYNK01
- Pin 13 : DTR2-
- Pin 14 : CRT-R01
- Pin 15 : GND
- Pin 16 : CRT-G01
- Pin 17 : GND
- Pin 18 : CRT-B01



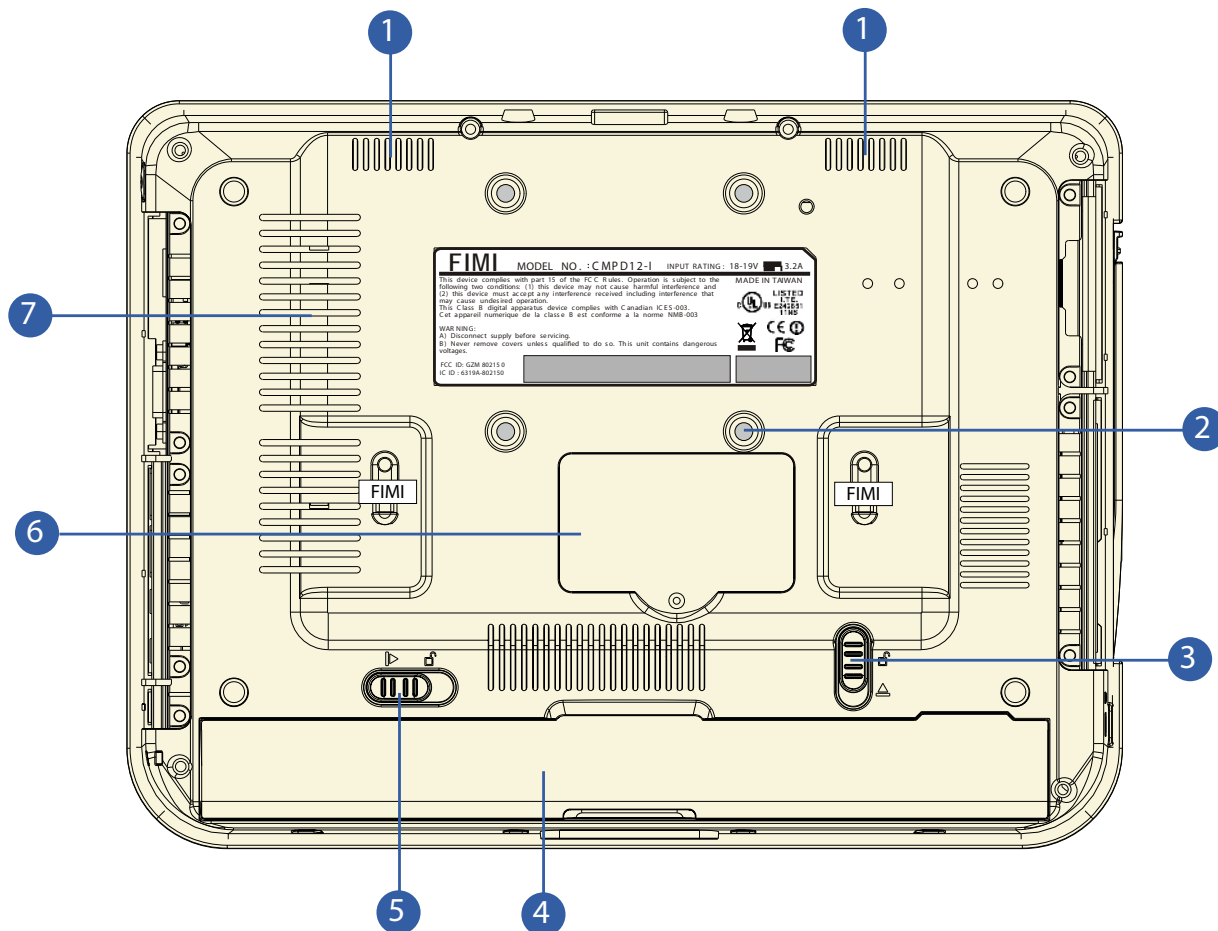
4.1.4 TOP VIEW

1. USB 2.0 Port (Optional)
2. For Upper USB device fixation (2x) M4



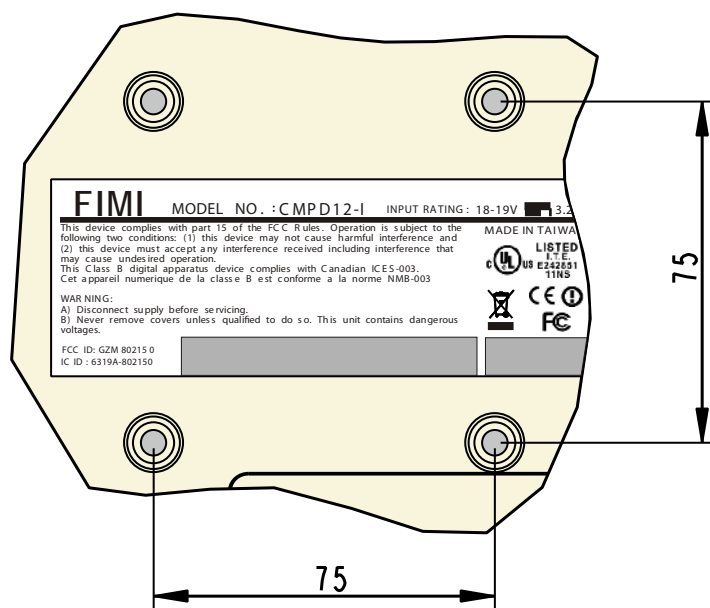
4.1.5 BACK VIEW

1. Speakers
2. VESA 75 mounting screw holes (x4) M4
3. Battery latch 1 (lock)
4. Battery
5. Battery latch 2
6. Memory module cover
7. Processor fanless heatsink air vent



(fig. 13a)

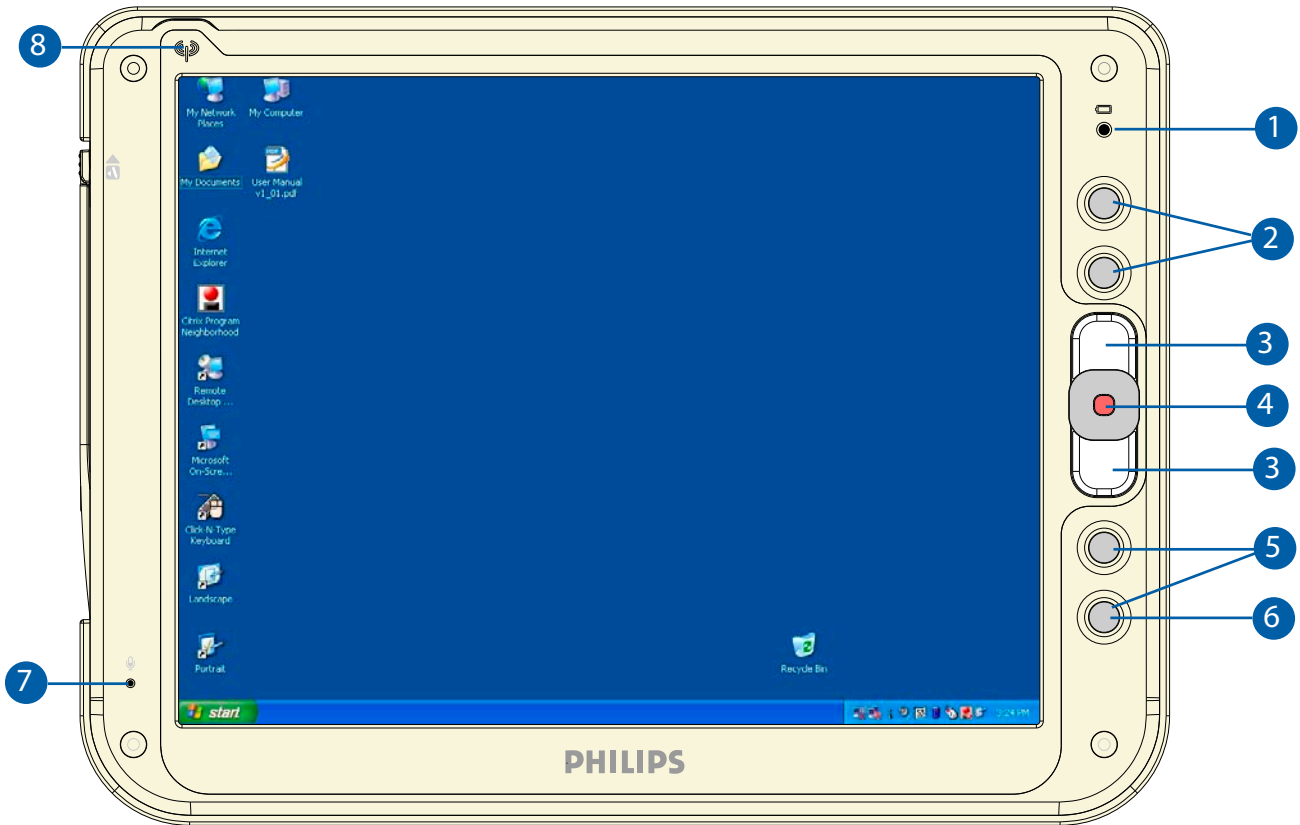
4.1.6 DIMENSIONS OF VESA MOUNTING



(fig. 13b)

5.1.0 CONTROL PANEL DESCRIPTION

1. Battery LED
2. Programmable buttons
3. Track pointer buttons
4. Track pointer stick
5. Programmable buttons
6. On-Screen Keyboard (default)
7. Microphone
8. WLAN status LED



(fig. 14a)

6.1.0 **BEFORE YOU BEGIN**

The ProScribe is intended for use as Windows XP embedded powered wireless thin client touch-screen device. To use your ProScribe you must have the following;

- a mains plugs to charge the battery for using it as portable device
- a wireless access point to access the corporate network or
- an Ethernet connection in case you plan to use the ProScribe on a fixed location

6.2.0 **GETTING STARTED**

The Windows XP embedded operating system provides you all the convenience to set-up any type of thin-client session with centrally located applications or web-based services. Before doing so, please make sure to apply the following instructions.

IMPORTANT NOTICE :

Write protect

The ProScribe is pre-configured with a Windows XPe feature called Enhanced Write Filter (EWF) to prevent writing on the CF card. When write protection is activated, all recently installed software products and changed user settings are not stored into the CF and hence are removed after a reboot. The procedure to save such data in the CF card is described hereunder. It is strongly advised to re-enable EWF after disabling it for storing user data. EWF protects the OS but also the CF card itself.

Procedure to disable EWF

- press “start” button then “Run...” and type “ewfd”
- the ProScribe will logout and reboot automatically
- now the CF is write enable, so the modification are really stored into the CF card, meaning that modifications will be retained on reboot.
- after applying the desired modifications, enable the EWF.

Procedure to enable EWF

- press “start” button then “Run...” and type “ewfe”
- the ProScribe will logout and reboot automatically
- now the CF is write disable, so modification are not stored into the CF card, meaning that modifications will be lost on reboot.

6.2.1 **LOAD BATTERY**

Make sure the ProScribe is switched OFF.

Install the battery.

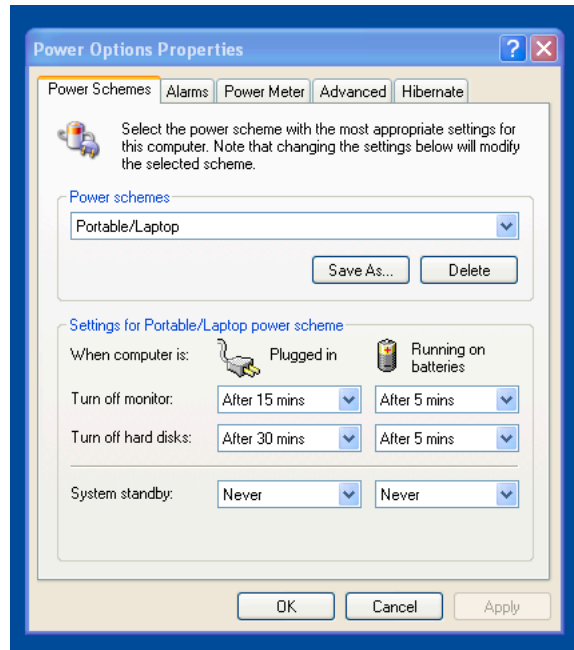
- Place ProScribe on your desk with its face down.
- Place the battery in the battery slot then press it down to fit in.
- Push battery latch 1 (ref. fig. 12b) into the locked position.
- For first time use, the battery requires five hours to become fully charged.
- Check that the power led is orange lighted (pos.1 photo n°14a). It indicates that the battery is charging.

6.2.2 **POWER SAVING MODE**

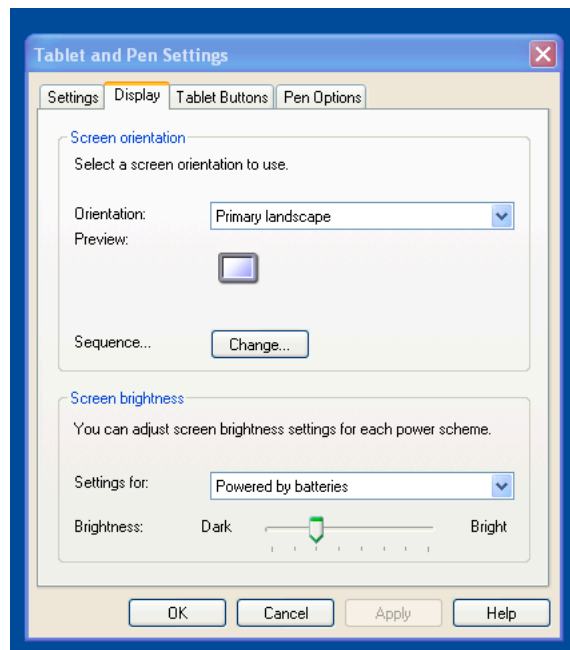
To make changes to power saving setup,

- Navigate through: “**START** -> **Settings** -> **Control panel** -> **Power Options**” and select the **Power Schemes** that best meets your needs.
- Navigate through: “**START** -> **Settings** -> **Control panel** -> **Tablet and Pen Settings**”.
- Select the “**display**” TAB
- Choose the desired Brightness level

Power Schemes



Display



6.2.3 SET DATA AND TIME

Double click on the screen display window on the task bar (in low to the right) set new data or time clock.

6.2.4 WLAN SETUP

The WLAN setup is strictly dependent on the existing wireless network infrastructure.

A example of WLAN setup is depicted:

- From the Ralink Wireless Utility icon on the Windows Taskbar select: **“Use Zero Configuration as Configuration Utility”**
- Navigate through : **“START -> Settings -> Control Panel -> Network Connections -> Wireless Network Connection”** and select one of the available networks.
- If required, insert a network key or password.
- To further configure the WLAN parameters on the **“Wireless Network Connection” “Related Tasks”** panel, select **“Change advanced settings”**.
- The **“Wireless Network Connection Properties”** dialog pops up, select **“Wireless Networks”** tab
- Select the preferred network and press **“Properties”** to adjust the authentication / encryption parameters.

6.2.5 ETHERNET LAN SETUP

Setting up an Ethernet connection is just a matter of plugging the Ethernet cable in the RJ45 connector. It is advised to switch off the WLAN connection in order to save battery power.

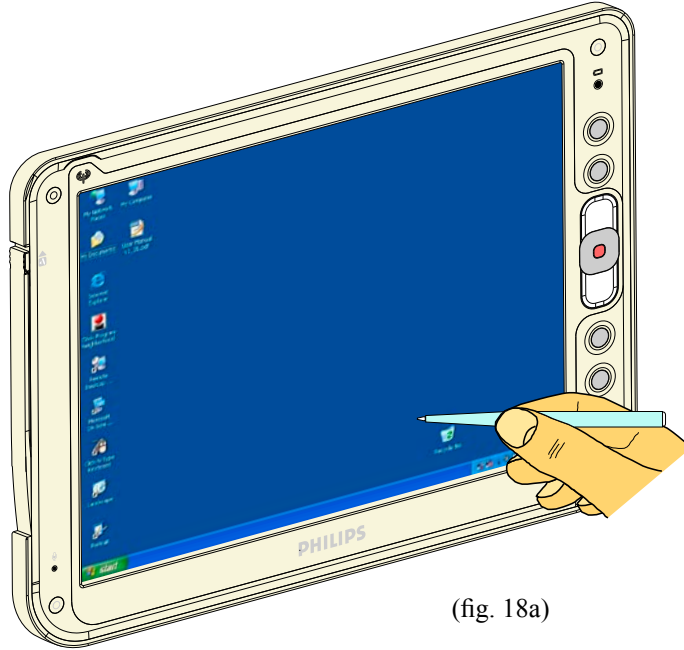
6.2.6 SCREEN BRIGHTNESS

The ProScribe is pre-configured to save battery power by switching the LCD brightness to a lower level when the power plug is removed. Normal brightness is restored by going to: “Control Panel > Tablet and Pen Settings > Display > Screen Brightness > Powered by Batteries” and by moving the slide bar to “Bright”.

7.1.0 DATA INPUT TO THE TOUCH SCREEN

7.1.1 TOUCH THE SCREEN

Use the stylus pen to move the mouse cursor or select the desired desktop icon or menu.



(fig. 18a)

NOTE:

The two stylus that are supplied with WI121 are designed for your screen. Use of fingertip or other pointers could damage your screen.

7.1.2 LEFT OR RIGHT CLICK EMULATION

Users accustomed to a mouse device often right click for quick access to command options for an icon. The stylus pen offers a similar command function.

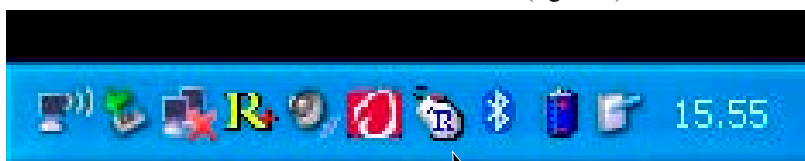
Click on taskbar mouse icon to select “left” or “right” click emulation.

NOTE:

default “left”



(fig. 18b)

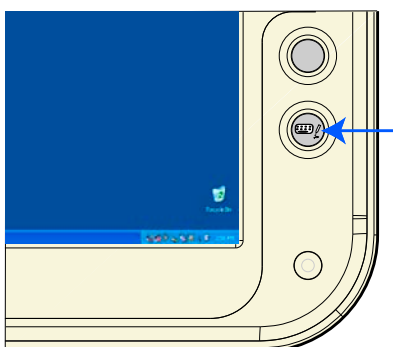


(fig. 18c)

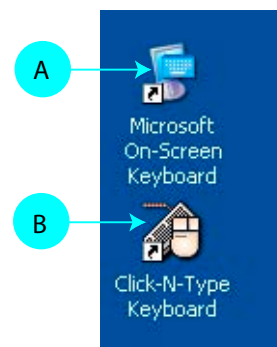
7.1.3 ON-SCREEN KEYBOARD

Users can ‘type’ message with the on screen keyboard.

- To display, press the Input keyboard button on your ProScribe (fig.18d).
- The on screen display keyboard can also be activated by double clicking on the relevant icon on the desktop (fig.18e-ref. A).
- The desktop contains an additional on-screen-keyboard that can be configured in multiple ways (fig. 18e-ref. B).



(fig. 18d)



(fig. 18e)

7.1.4 SIZEABLE KEYBOARD

The “Click-N-Type” keyboard is re-sizeable. Once started, point the mouse at one of the edges to make it larger or smaller. It can also be programmed as standard keyboard under the corresponding hotkey by going to:

Control Panel > Tablet and Pen Settings > Tablet Buttons > Button 4 > Change > Browse > (go to desktop and select shortcut).

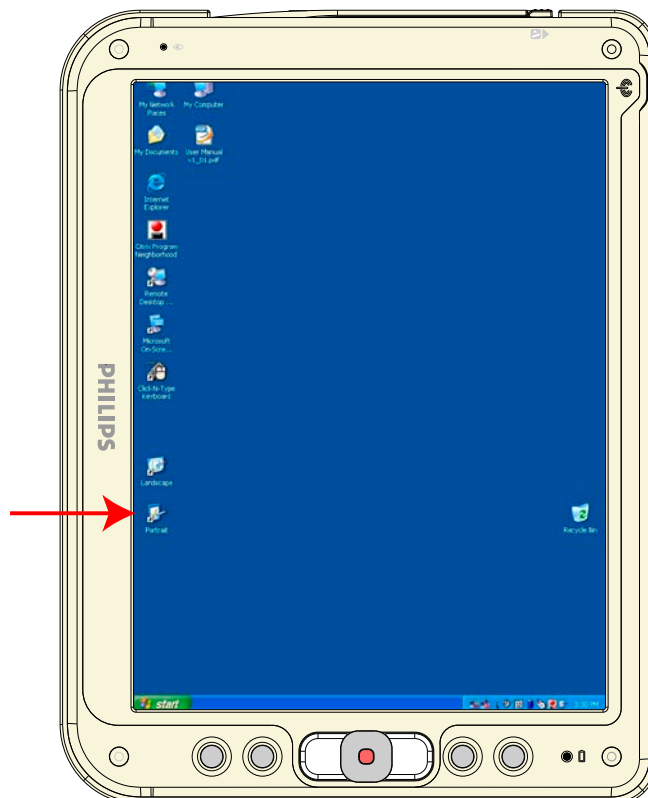


(fig. 19a)

7.1.5 SCREEN ROTATION (Landscape to Portrait)

Click the **portrait** icon on the desktop, to rotate the screen as the fig. 17b.

Viceversa, click the **Landscape** icon on the desktop to return the screen at the original orientation.



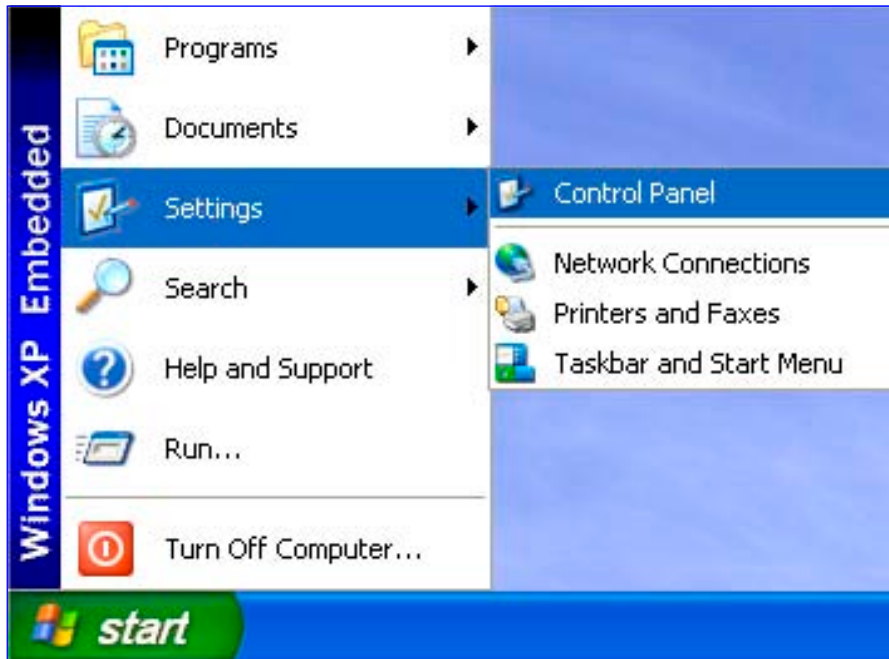
(fig. 19b)

8.1.0 TOUCH-PANEL CALIBRATION

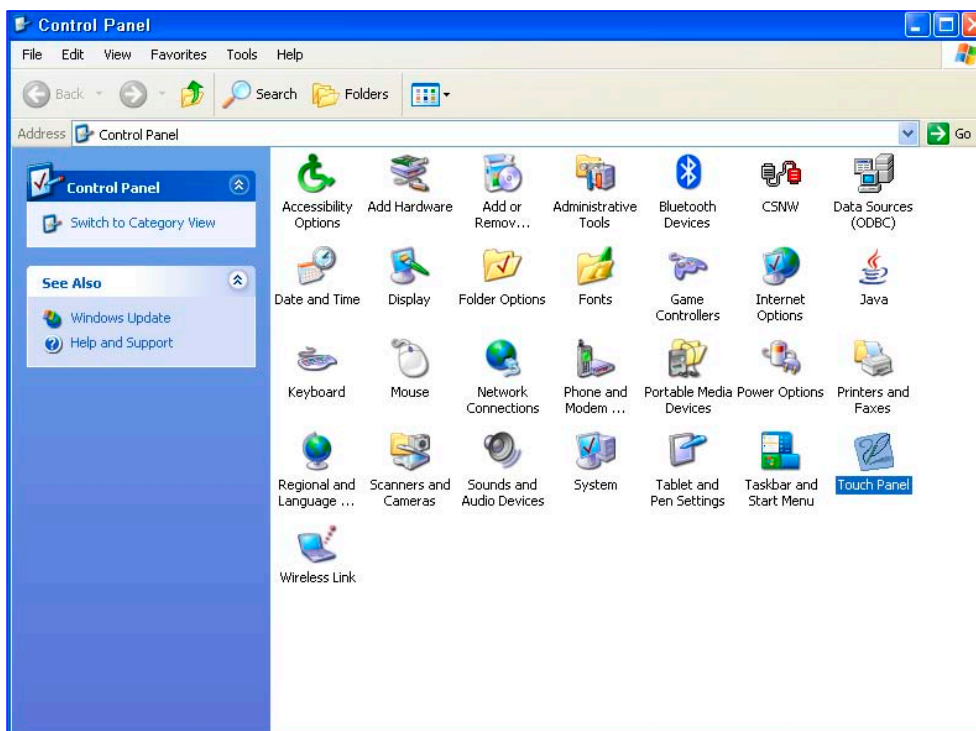
To calibrate the stylus tapping pattern:

- Tap Start -> Settings -> Control Panel
- Double click “Touch Panel” Button
- Select “Calibration” tab
- Enable the Check-Box -> Press “Apply” Button
- Disable the Check-Box -> Press “Apply” Button -> Press “Calibrate Now”
- Calibrate Touch-Panel
- Press “Update” Button
- Press “OK” button

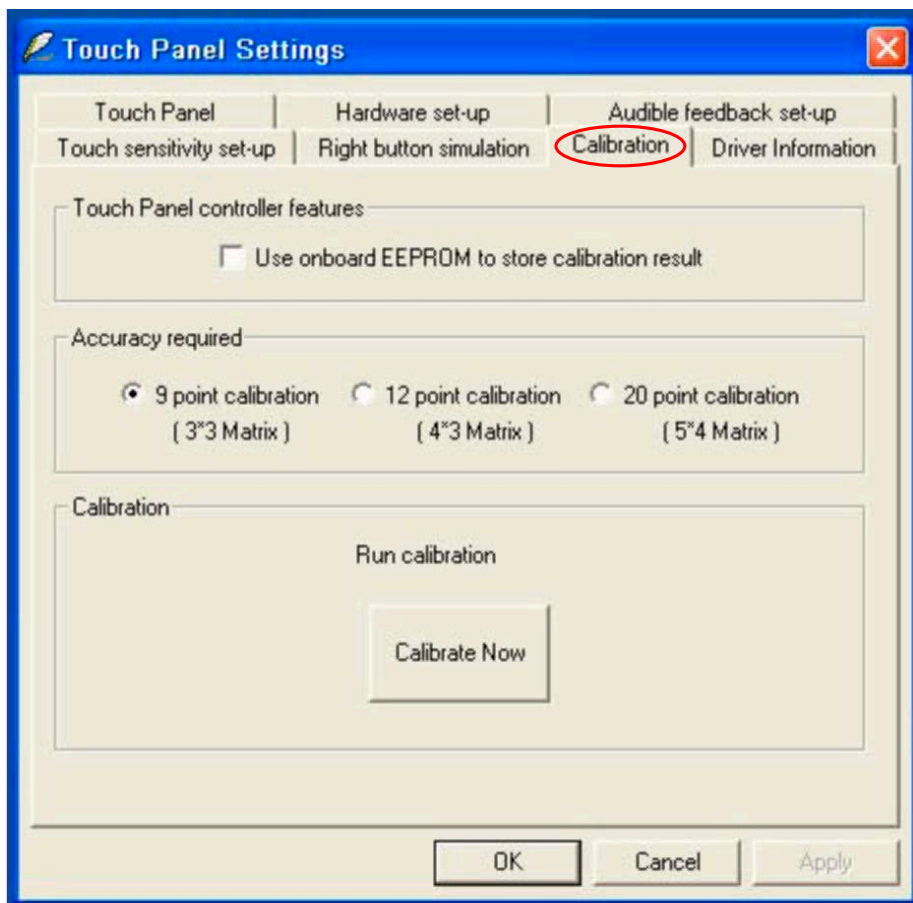
Tap Start -> Settings -> Control Panel



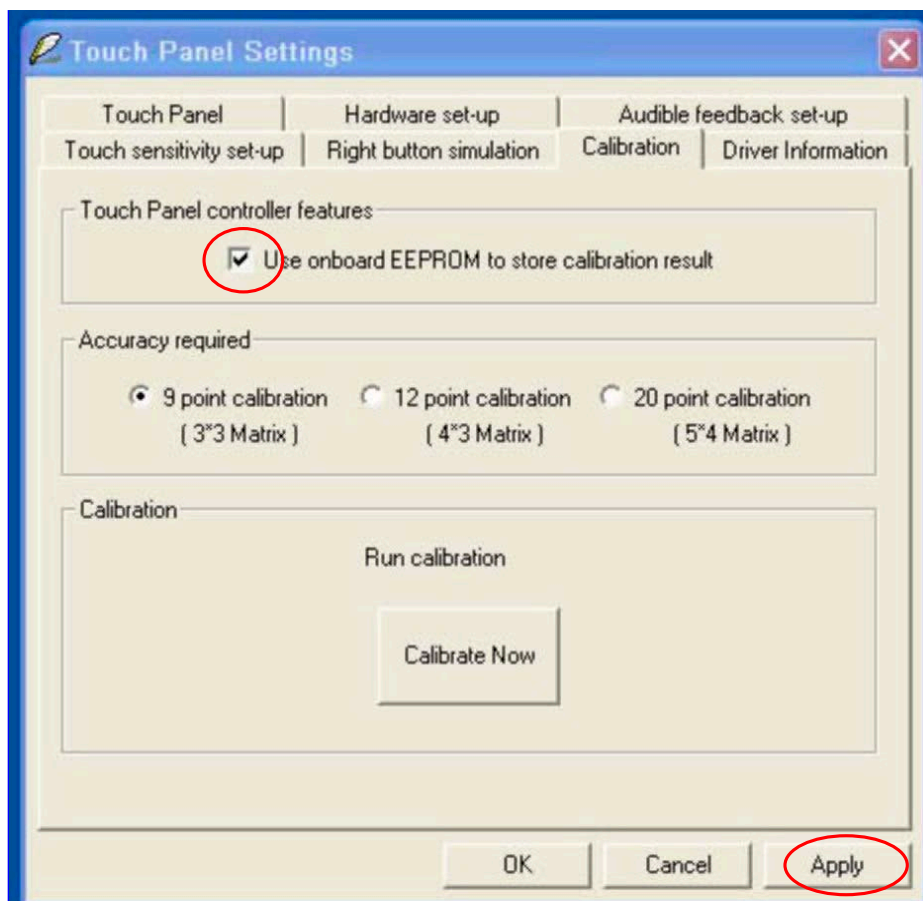
Double click “Touch Panel” Button



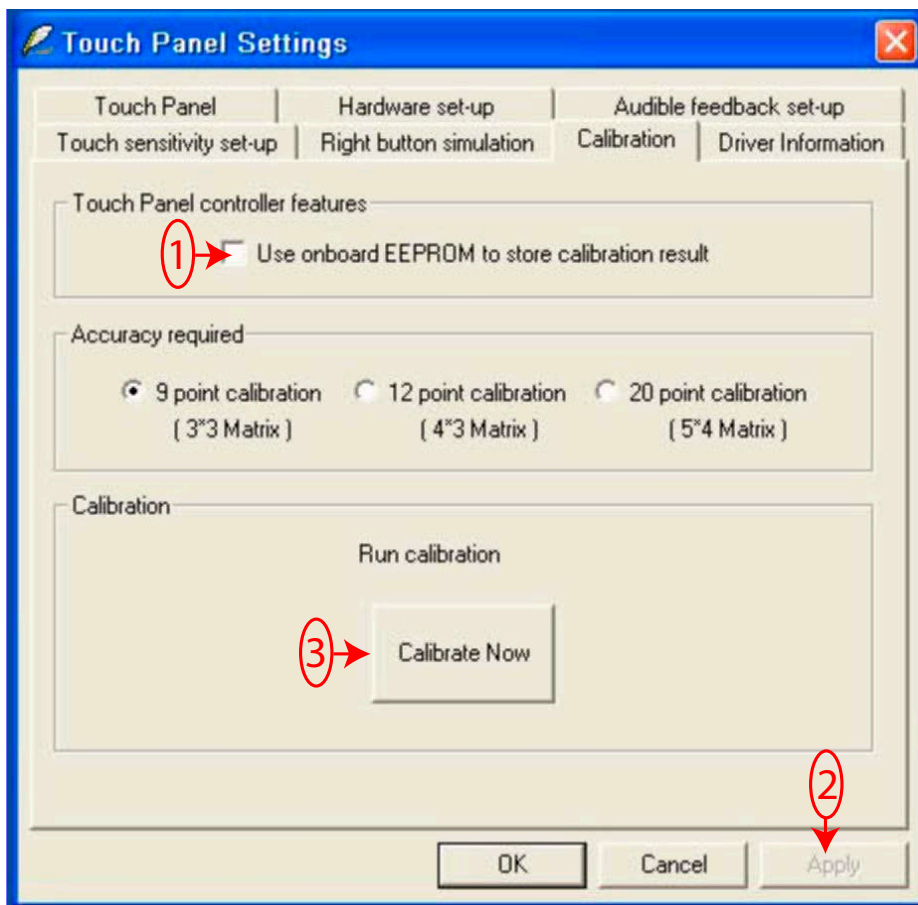
Select “Calibration” tab



Enable the Check-Box -> Press “Apply” Button



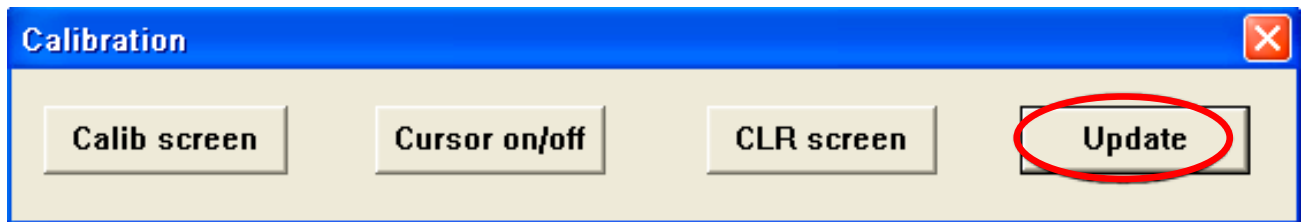
Disable the Check-Box -> Press “Apply” Button -> Press “Calibrate Now”



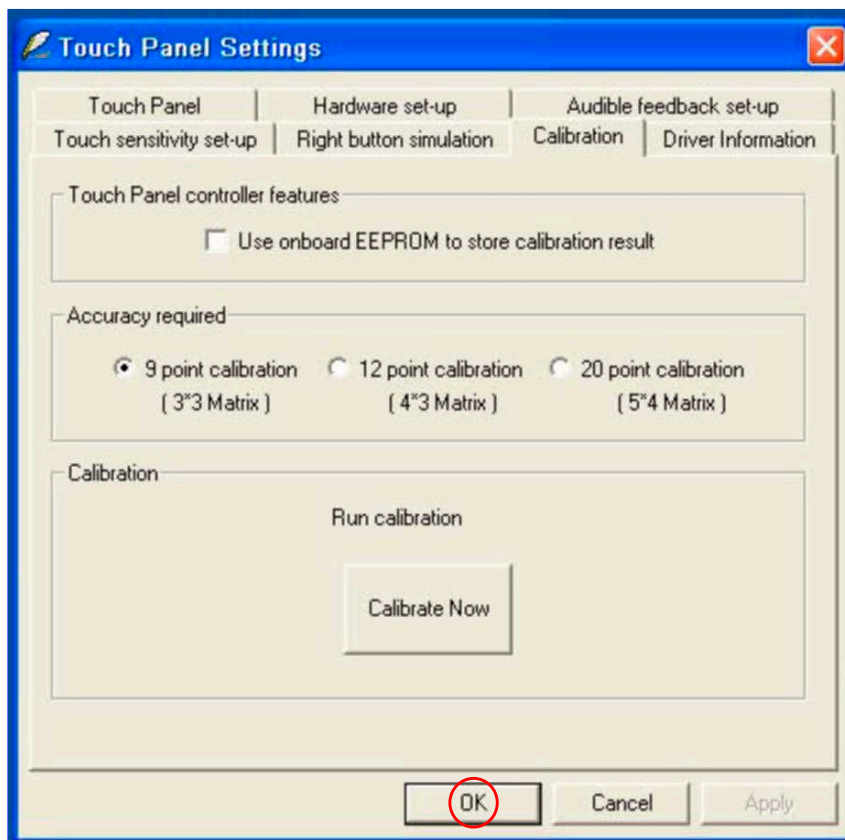
Calibrate Touch-Panel



Press “Update” Button



Press “OK” button

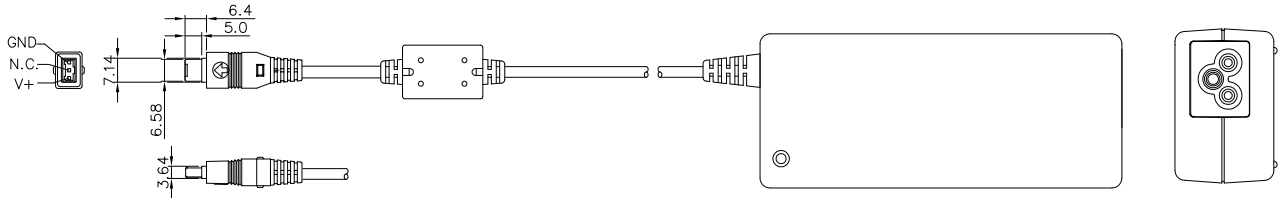


9.1.0 POWER SUPPLY

There are two sources of power for ProScribe operation: the battery and the AC adapter.

9.1.1 AC

You may operate your ProScribe with AC power in two different ways. Mounted in the Docking station **WD121**.., or connected directly to the AC adapter (fig. 24a). To run your ProScribe on the base station, connect the AC adapter to the jack at the rear of the base station and place the pad into. To plug the product directly to the AC adapter, locate and plug into the DC adapter at the lower right corner of the product.



(fig. 24a)

CAUTION:

The ProScribe should not be docked if both devices (ProScribe and Docking Station) are powered through the AC adapter. Also, it is not advisable to dock the ProScribe if the Docking Station is not powered through the AC adapter.

9.1.2 BATTERY

When using the ProScribe for the first time, it is advisable to charge the battery for at least 2 hours.

After the initial charging, when not in use, the ProScribe takes approximately three hours to fully charged; it takes 4 hours to fully charged while in use. Battery duration depends on the actual use of the device and may be affected by heavy-duty application.

In most applications it is between two and three hours.

The power light on the top right indicates the level of battery charge.

Turn on the power to see the power light.

- **Full charge** The power light is solid green.
- **Low charge** The power light is blinking green when the battery's remaining charged falls to less than 6 percent.
- **Critical low charge** The power light blinks amber when the charge falls under 3 percent.

If your ProScribe is powered up and immediately enters the suspend mode, it means the battery is uncharged.

In order to optimize battery operation, open only the applications you are actually using.

To conserve battery power, disable WLAN when it's not in use.

To change battery

- Switch OFF your ProScribe.
- Unlock I the battery latch 1 (ref. fig. 11b)
- While one hand holds the battery latch two in the unlocked position, use the other hand to pull the battery out of the slot.
- Replace with another battery

NOTE:

When fully charged and not in use, your ProScribe has a life of one week.

CAUTION:

Switch OFF your ProScribe before removing or changing the battery pack.

10.0.0 CONNECTING TO A NETWORK

You can setup a connection to a wireless network (WLAN) or a wired network (LAN).

10.0.1 WLAN

Your ProScribe includes a wireless LAN module.

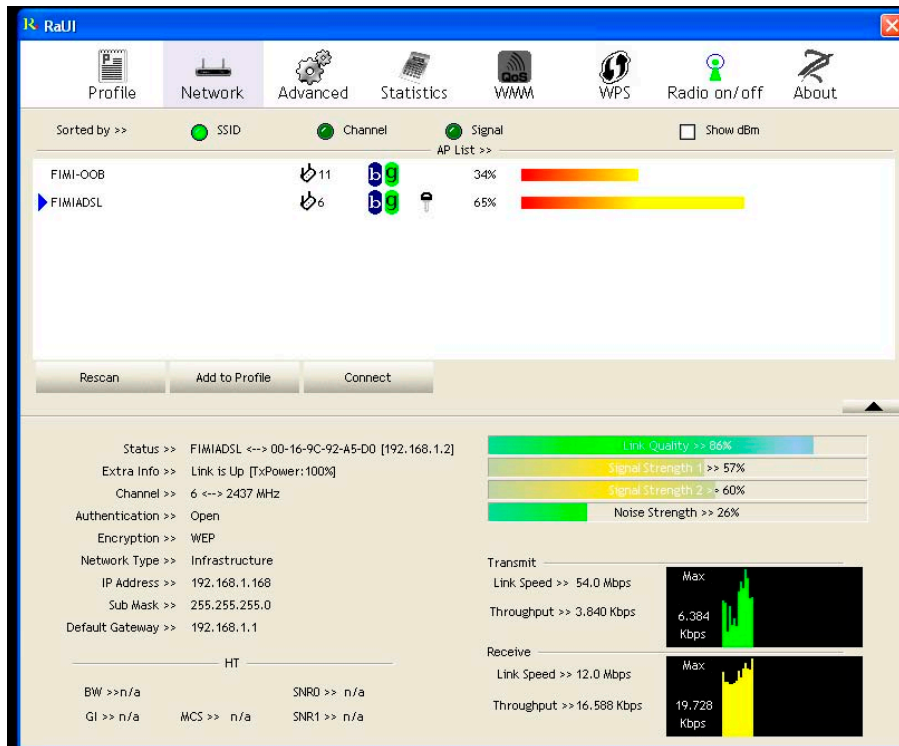
10.0.2 START A CONNECTION

Method One

Tap (right click) on the Ralink network icon that resides in the taskbar at the bottom of your screen.

- Select “Restore”
- The “Ralink wireless utility” pops-up
- Select the “Network” tab
- Select one of the available networks

Press the “connect” button to connect to the wireless network.

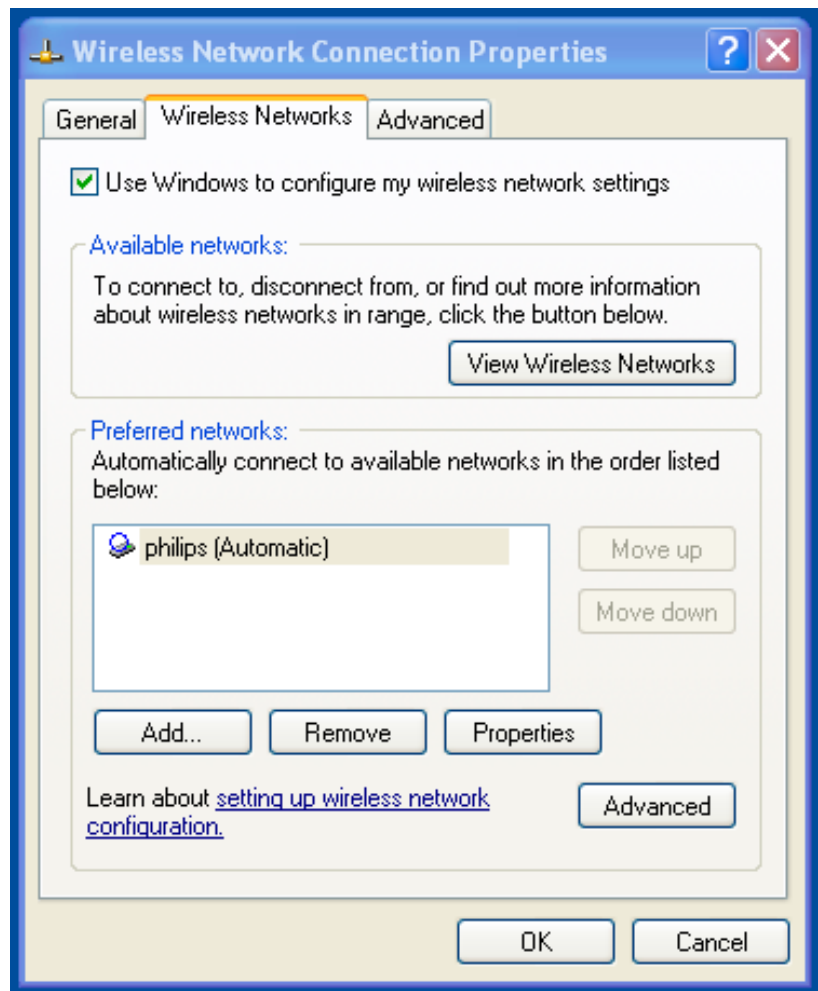
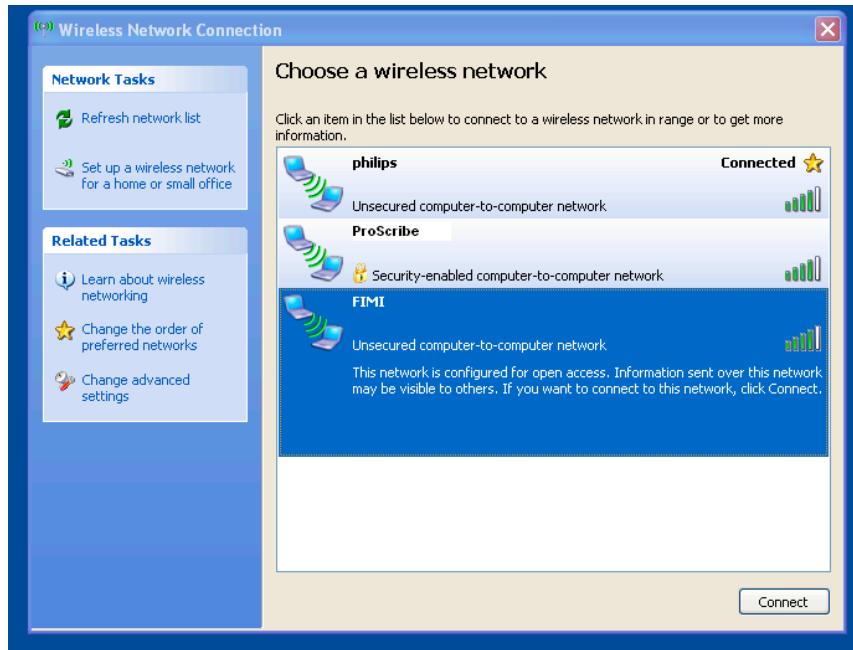


Method Two

The WLAN setup is strictly dependent on the existing wireless network infrastructure.

A example of WLAN setup is depicted:

- From the Ralink Wireless Utility icon on the Windows Taskbar select: “Use Zero Configuration as Configuration Utility”
- Navigate through : “START -> Settings -> Control Panel -> Network Connections -> Wireless Network Connection” and select one of the available networks.
- If required, insert a network key or password.
- To further configure the WLAN parameters on the “Wireless Network Connection” “Related Tasks” panel, select “Change advanced settings”.
- The “Wireless Network Connection Properties” dialog pops up, select “Wireless Networks” tab
- Select the preferred network and press “Properties” to adjust the authentication / encryption parameters.



10.1.2

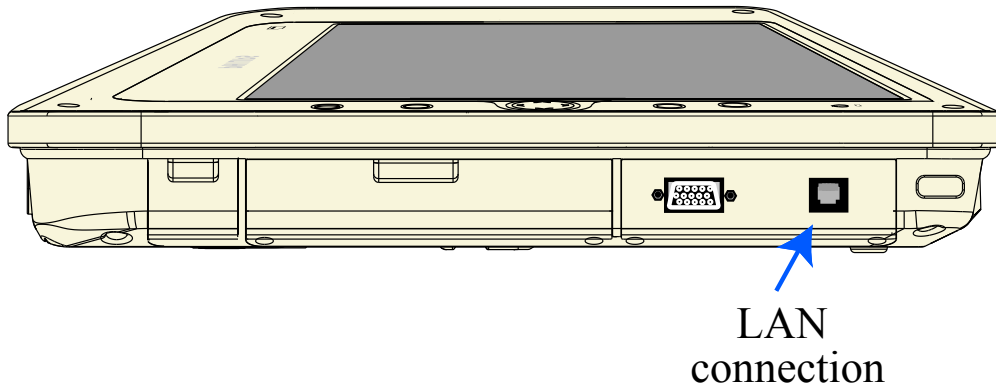
When the connection is ready, you may be required to launch a remote control application to communicate between your ProScribe and the host computer. The ProScribe ships with two applications to do this:

- Remote Desktop Connection connects to a Window server.

To complete the connections with Remote Desktop Connection, you will need information including user name, password and network IP. Ask your network administrator to provide the required setup information.

10.0.3 LAN

You can use the RS 45 plug to connect your ProScribe to a LAN



(fig. 27a)

11.0.0 FEATURED SOFTWARE APPLICATIONS

Your ProScribe has a suite of applications designed to create, share, and manage your information.

11.0.1 CONTROL PANEL

The Control Panel provides access to system settings allowing you to manage the properties of your ProScribe such as:

- **Touch Panel**

Configures and calibrates your touch screen.

- **Display**

Sets your Background, Appearance, and Backlight Time Out preferences.

- **Tablet and Pen Settings**

Changes the screen brightness Power scheme

Changes ProScribe programmable buttons

- **Network Connections**

Selects and sets network properties.

- **System**

Displays your ProScribe system information.

11.0.2 MICROSOFT INTERNET EXPLORER

Microsoft Internet Explorer is designed to provide a rich Internet experience while using a Windows powered device.

To launch:

- Tap on START
- Tap on PROGRAMS
- Tap on INTERNET EXPLORER

11.0.3 MICROSOFT RDP

This is a terminal services client that allows you to connect your ProScribe to a Microsoft Windows terminal server.

- To launch Tap the “**remote desktop connection**” icon on the desktop

11.0.4 WINDOWS MEDIA PLAYER

This is a multimedia application that plays audio and video files. For example, you can enjoy MP3 format music in or play a MPEG-4 format video clip from a file located on the pad or from the network.

- Tap on START
- Tap on PROGRAMS
- Tap on WINDOWS MEDIA PLAYER

11.0.6 HOT KEY UTILITY

There are 4 hot keys buttons to quick launch software applications. You can customize three of these hot keys functions with the tablet and pen settings applet:

- Navigate through: “**START -> Settings -> Control panel -> Tablet and Pen Settings**”
- Choose tablet buttons tab
- Select the tablet button
- Tap on the change button
- Tap OK to complete

NOTE:

Button “2” is not programmable

Default action:

- *Button “1” -> Esc*
- *Button “2” -> Windows task manager*
- *Button “3” -> Enter*
- *Button “4” -> OSK*

11.0.7 WORDPAD

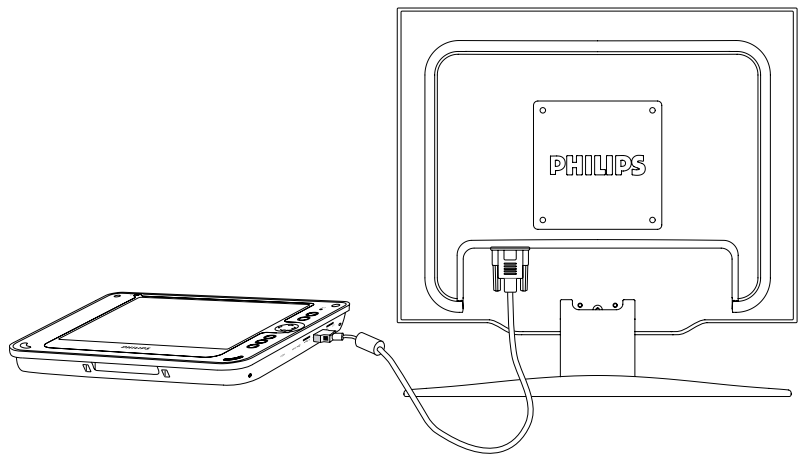
Create, open and update WordPad files

11.1.1 CONNECTING EXTERNAL PERIPHERALS

The ProScribe is ready to go and does not need any additional peripheral to operate. The ProScribe can in case required be extended with virtually any type of external peripheral thanks to the built-in support of two USB ports and 32 bits PCMCIA slot.

11.1.2 VGA PORT

The ProScribe can be connected to a projector or monitor by using a standard VGA cable.



NOTE:

The Windows XPe version of the ProScribe might not contain all the required components and drivers required to operate your peripherals. Please visit the website of the supplier to download the missing software items.

11.2.1 RUGGEDIZED DESIGN

Your ProScribe is specially designed to withstand such as a physical impact or a liquid spill.

- Drop resistant
It has the anti-shock design to resistant to 3 feet drop test (without the hand-carry set mounted: kickstand, hand strip left/right stand adapter).
- Liquid spill
the front face of ProScribe meets IP53 requirement for water and dust resistance; The back cover is regular IP20.

12.0.0 **TROUBLESHOOTING**

12.0.1 **THE ProScribe WILL NOT TURN ON...**

- Make sure that both the battery latches on the back of the unit are set to the lock position.
- When power is on, you will see:
On the pad: Power indicator light above the screen on the right will turn green
- If power is on, but you still don't see anything on the screen, wake up the pad by tapping on the screen or by pressing control buttons located on the right hand side of the screen.
- If pad does not power on attach the AC adapter to the unit by either ;
Plugging the AC adapter into the DC in jack located under the protective flap on the right hand side of the unit, making sure that the Adapter is also plugged into the wall socket.
- If the preceding steps do not turn the pad on, try restarting the machine:
As a last resort remove the power cord and the battery, wait ten seconds then insert again the battery and power cord, try to switch ON the ProScribe

12.0.2 **MY SYSTEM DOES NOT RUN SMOOTHLY**

Poor wireless signal quality or the simultaneous opening of too many applications will cause deterioration in application performance.

To free up memory, close applications that are not in use.

Check wireless signal quality:

- WLAN LED indicator. When the WLAN LED indicator is blue, the Proscribe wireless card is active. If signal is weak, try moving closer to your Access Point, or try repositioning the antenna of the access point.
- Network icon. Double tap the Network icon on the bar at the bottom of the screen. Choose the Wireless Information tab to show the current connection.

12.0.3 **HOW DO I TURN OFF MY ProScribe**

To end operation: Press the power switch on the upper right side.

Or tap the “**START Menu**” and then choose “**Shut Down**” to turn off the pad.

NOTE:

Pressing the Power switch of the device for more than five seconds will make an hard turn Off preventing the Operating System to perform the correct shutdown procedure.

12.0.4 **WHEN I USE THE STYLUS PEN...**

- System does not respond to taps...
 - a. Try tapping the center of an icon.
 - b. Re-calibrate the tapping pattern.

NOTE:

You might need to practice a couple of time in to operate your screen with taps.

- The mouse arrow is out of alignment...
The mouse arrow does not point to the center of icon as you intend. It might be due to the viewing angle or the stylus may require calibration.
- Users accustomed to a mouse device use a right click for quick access to command options of an object.
The stylus pen offers a similar command function. Here's how: See par. 7.1.1

12.0.5 **HOW DO I USE THE ON-SCREEN KEYBOARD?**

- Open the on-screen keyboard. You can use the Input Panel button to open up the on-screen keyboard. This button is located at the lower right side of the pad.

12.0.7 HOW DO I USE A PASSWORD TO PROTECT MY DATA ON ProScribe?

You can use a password to protect your data.

Here's how:

1. To setup, tap the PASSWORD icon on the Control Panel
2. Enter the password you have selected
3. Enter the password again to confirm your password.

You can enable password protection at Power On or Screen Saver.

CAUTION:

If you forget your password, you must restore the OS image. All custom data will be lost.

13.0.0 SAFETY AND PRODUCT CARE INSTRUCTIONS

13.0.1 TO CLEAN THE SCREEN:

1. To remove dust and other particles, wipe the screen with a clean, soft, lint-free cloth.
2. For heavy duty cleaning, wipe the screen with a soft, clean cloth lightly sprayed with a commercial window cleaner that does not contain wax or abrasives. Always apply the cleaner to the cloth, not the screen.
If the display contains has become greasy, substitute use isopropyl alcohol.

NOTE:

Paper towels and other paper products are abrasive. Be sure to use a clean cloth when wiping the screen.

13.0.2 TO CLEAN THE CASE:

1. For normal cleaning, use a soft, dry cloth.
2. For heavy duty cleaning, apply a small amount of a mild non-abrasive, ammonia-free, alcohol-free detergent onto a clean, soft, lint-free cloth and wipe the case surface.

14.0.0 PRECAUTIONS

14.0.1 Installation

The equipment should be installed near an easily accessible outlet.

Do not install or leave the monitor:

In places subject to extreme temperatures, for example near a radiator, heating vent, or in direct sunlight. Subjecting the LCD monitor to extreme temperatures, could cause deformations of the casing or malfunctions.

In places subject to mechanical vibration or shock.

Near any equipment that generates a strong magnetic field, such as a TV or various other medical appliances.

In places subject to inordinate amounts of dust, dirt, or sand, for example near an open window or an outdoor exit.

If setting up temporarily in an outdoor environment, be sure to take adequate precautions against airborne dust and dirt.

Otherwise irreparable malfunctions could occur.

14.0.2 Handling

Do not press on or scratch the LCD screen. Do not place a heavy object on the LCD screen. This may cause the screen to lose uniformity or cause LCD panel malfunctions.

If the monitor is used in a cold place, a residual image may appear in the screen. This is not a malfunction.

The screen returns to normal as the temperature rises to a normal operating level.

If a still picture is displayed for a long time, a residual image may appear for a while. The residual image will eventually disappear.

The LCD panel becomes warm during operation. This is not a malfunction.

Allow adequate air circulation to reduce the LCD panel temperature (eg. on the desk keep it in the base station)

14.0.3 Maintenance

Be sure to unplug the power cord from the mains when cleaning your device.

The front polarizer can be easily damaged. Take care not to scratch the front surface with any hard or abrasive material. Dust, finger marks, grease etc. can be removed with a soft damp cloth (a small amount of mild detergent can be used on the damp cloth). Do not apply water or detergent directly to the front surface as this may cause staining or damage the electronic components. Never use any solvent on the front polarizer or module as this may cause permanent damage. Wipe off water drop immediately. Long contact with water may cause discoloration spots. When the panel surface is soiled, wipe it with absorbent cotton or other soft cloth.”

14.0.4 Transportation

Disconnect all cables from the monitor when transporting.

When you transport this device, hold the base sections of the display stand firmly in both hands. If you drop the device, you may be injured or the monitor may be damaged.

When you transport this device for repair or shipment, use the original cardboard box and packing materials.

14.1.0 DISPOSAL OF THE LCD ProScribe

Do not dispose of this monitor with general household waste.

The fluorescent tube used in this LCD monitor contains mercury. Disposal of this monitor must be carried out in accordance with the regulations of your local sanitation authority.

- **For countries in the European Union**



This symbol indicates that this product (including the cables, plugs and accessory) must not be disposed of with the other household waste. Instead, it is your responsibility to dispose of your waste equipment by handing it over to a designated collection point for the collection of waste electrical and electronic equipment. The separate collection and recycling of your waste equipment at the time of disposal will help to conserve natural resources and ensure that it is recycled in a manner that protects human health and the environment. For more information about where you can drop off your waste equipment for recycling, please contact your local city office, or your supplier's office.

- **For countries outside the European Union**

Disposal of electrical products in countries outside the European Union should be done in line with local regulations.

14.1.1 Safety note Battery-pack (Li-ion)

CAUTION:

- Danger of explosion if battery is incorrectly replaced. Replace only with the same or equivalent type recommended the manufacturer.
- Li-ion batteries include special circuitry to protect the battery from damage due to overcharging or undercharging.
- Lithium-ion batteries also require sophisticated chargers that can carefully monitor the charge process; put them in a charger not designed for Lithium-ion batteries create a potentially dangerous situation.
- To charge the battery follow the instruction in this User's Manual.

14.1.2 Dispose of Lithium ion battery (Li-ion)

- Lithium-ion battery should never be incinerated since it might explode.
- Special precautions must be taken to avoid Li-ion battery fire up or explosion that can cause serious injuries. Never try to extinguish such a fire with water! But only with suitable extinguisher.
- Contact your local waste disposal agency for the address of the nearest battery deposit site.



14.1.3 Dispose of coin battery inside of the ProScribe (Mounted on main board):

The coin battery contain Perchlorate Material-special handling may apply,
See www.dtsc.ca.gov/hazardouswaste/perchlorate.



15.0.0 ACCESSORY (Optional)

15.0.1 Docking Station WD121 series

15.0.2 Product configurations:

WD121

- Docking Station.

WD121P

- Docking Station.
- AC Power Adapter (ITE grade).
- Power Cord set (EU and US cords).

WD1212

- 2 x Docking Station.

15.0.3 Hardware Installation

To use the Docking Station, connect it to power through its AC adapter.

The ProScribe can be docked and undocked both in OFF and ON status.

To dock the ProScribe, keep it in vertical position and align the PHILIPS logos in such a way the one on the ProScribe is aligned around 1 cm on the left of the Docking Station one.

Gently release the ProScribe in the Docking Station; 2 plastic frames will drive the ProScribe in the correct position.

When the ProScribe is docked, the green led on the front of the Docking Station will light on.

The ProScribe front led will turn to yellow, indicating the battery is charging; when full charge is reached, the led will turn to green.

15.0.4 Software Installation

The ProScribe (Xpe version), comes with the Docking Station driver devices (10/100 Ethernet RJ45 port and USB 2.0 ports) already installed; the relevant drivers will be activated when you dock the ProScribe and deactivated when you undock it.

Docking Station (Front view)



Fig. 34a

Docking Station (Back view)

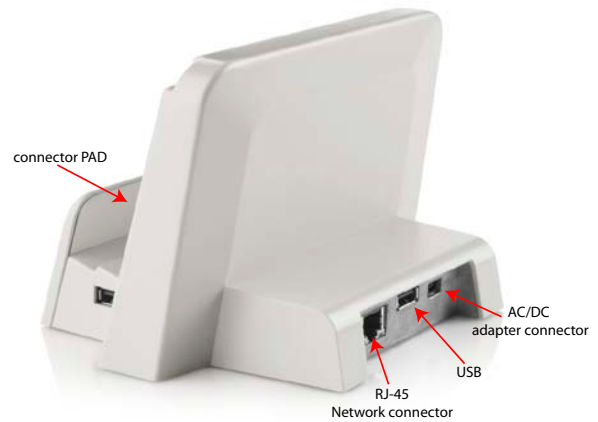


Fig. 34b

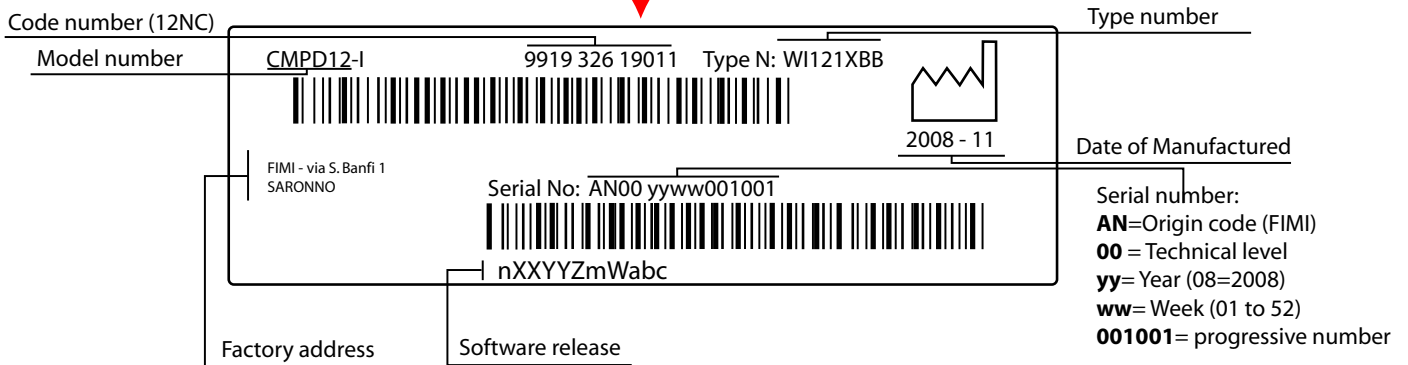
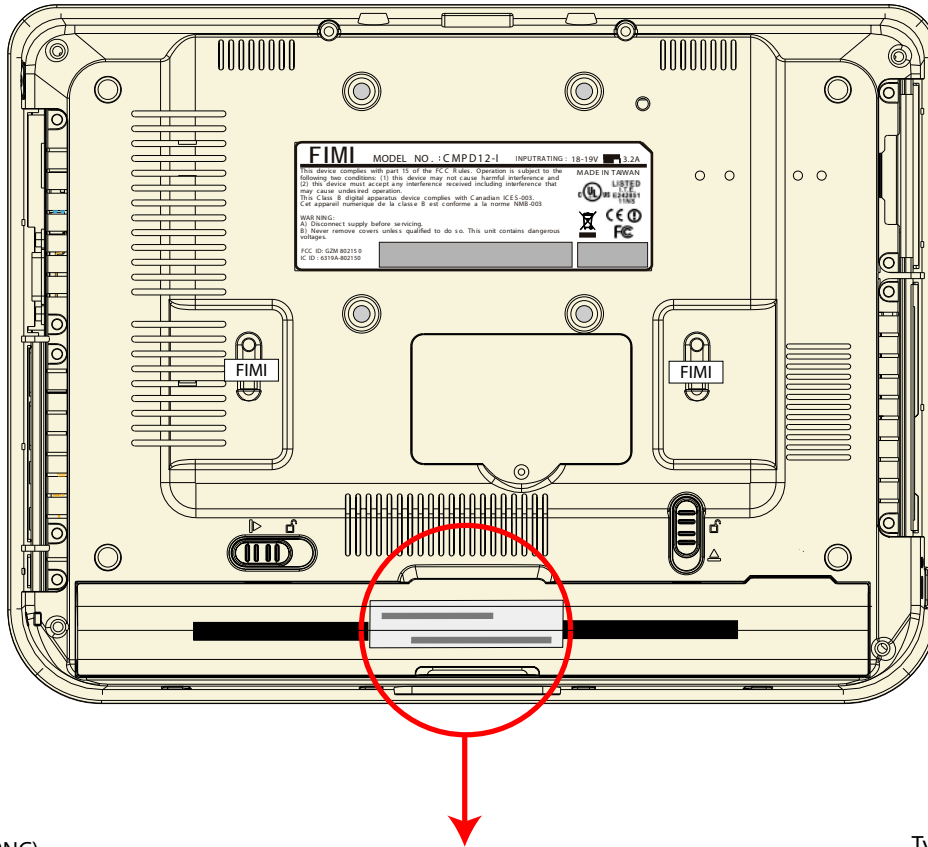
Docking Station with ProScribe



Fig. 34c

16.0.0 IDENTIFICATION LABEL

The identification label is visible by removing the battery



SOFTWARE RELEASE

nXXYYZmWabc or nXXYYZWmabc










Capital letter are characters A ÷ Z
Small letter are digits 0 ÷ 9

NOTE:

Please always communicate SW release when asking for technical support.

17.0.0 SYMBOL DESCRIPTION

The following symbols may appear on the ProScribe

	WARNING: This symbol alerts you to important operating considerations or a potential operating condition that can be a risk for damaging equipment.
	Dangerous voltage
	Product complies with 2002/96/EC
	Federal Communications Commission notice (USA)
	Wireless symbol
	Canada Interference-Causing Equipment Standard #3 Class B device
	Conformité Européenne; compliance to EMC Directive and Low Voltage Directive of the European Union
	Compliance with R&TTE Directive 1999/5/EC for radio frequency devices
	Compliance with Underwriters Laboratories for general product safety in accordance with UL 60950-1 (ITE) and CAN/CSA C22.2 No. 60950-1 (ITE)

INDEX

A

AC 24
ACCESSORY 34

B

BACK VIEW 13
BATTERY 24
BEFORE YOU BEGIN 15
BOTTOM VIEW 12

C

CAUTION 2
CONNECTING EXTERNAL PERIPHERALS 29
CONNECTING TO A NETWORK 25
CONTENTS 6
CONTROL PANEL 28
CONTROL PANEL DESCRIPTION 14

D

DATA INPUT TO THE TOUCH SCREEN 18
DIMENSIONS 10
DIMENSIONS OF VESA MOUNTING 13
DISPOSAL OF THE LCD ProScribe 32
Dispose of Lithium ion battery (Li-ion) 33

E

ETHERNET LAN SETUP 17

F

FCC Notice 2
FEATURED SOFTWARE APPLICATIONS 28

G

GETTING STARTED 15

H

Handling 32
HOT KEY UTILITY 29

I

IDENTIFICATION LABEL 35
INPUT INSTRUCTION 11
INSTALLATION 8
Installation 32
INSTALLATION KICKSTAND AND HAND STRIP 9
INTRODUCTION 4

L

LAN 27
LEFT OR RIGHT CLICK EMULATION 18
LEFT VIEW 11
LOAD BATTERY 15

M

Maintenance 32
MICROSOFT INTERNET EXPLORER 28
MICROSOFT RDP 28

O

ON-SCREEN KEYBOARD 18

P

POWER SAVING MODE 16
POWER SUPPLY 24
PRECAUTIONS 32

R

RF Exposure Statement 3
RIGHT VIEW 11
RUGGEDIZED DESIGN 29

S

SAFETY AND PRODUCT CARE INSTRUCTIONS 31
Safety note Battery-pack (Li-ion) 33
SCREEN BRIGHTNESS 17
SCREEN ROTATION 19
SET DATA AND TIME 16
SIZEABLE KEYBOARD 19
START A CONNECTION 25
SYMBOL DESCRIPTION 36

T

TECHNICAL INFORMATION 7
TO CLEAN THE CASE 31
TO CLEAN THE SCREEN 31
TOP VIEW 12
TOUCH-PANEL CALIBRATION 20
Transportation 32
TROUBLESHOOTING 30

V

VGA PORT 29

W

WARNING 2
WEIGHT 10
WINDOWS MEDIA PLAYER 28
WLAN 25
WLAN SETUP 17
WORDPAD 29

INTENTIONALLY LEFT BLANK

INTENTIONALLY LEFT BLANK

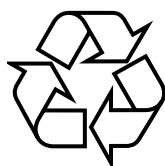
Specifications subject to change without notice.
All dimensions shown are approximate.

FIMI S.r.l. Saronno - Italy

All rights are reserved. Reproduction in whole or in part is prohibited without the written consent of the copyright owner

Printed in Italy

(Rev. 1.00)



4519 206 1041.1