



DHS40-HG-SCH - Signal Amplifier
User & Installation Manual

Document History

Description	Revision	Date Issued
Original	1.0	June 1 st , 2015
Update SAR values	2.0	July 20th, 2017

About this manual

This manual describes installation, commissioning, operation and maintenance of Fiplex **DHS40-HG-SCH Signal Amplifier**, and **Fiplex Control Software (FCS)**. The first part of the manual describes the Signal Amplifier hardware and the second part describes the software.

Hardware and software mentioned in this manual are subjected to continuous development and improvement. Consequently, there may be minor discrepancies between the information in the manual and the performance and design of the hardware and software. Specifications, dimensions and other statements mentioned in this manual are subject to change without notice.

This manual or parts of it may not be reproduced without the written permission of Fiplex
Communications Inc.

Infringements will be prosecuted. All rights reserved.
Copyright © Fiplex Communications Inc, Miami, 2017.

Exposure Statement



ATTENTION: This unit has a maximum output power of +40dBm +/- 2dBm, therefore the gain of the antenna should be of 0dBi or less and maintain a minimum separation of 40 cm from all persons to comply with SAR and/or RF field strength limits.

Part 1 HARDWARE

1. Safety

Caution!

This manual lists a set of rules and warnings to be accomplished when installing, commissioning and operating a DHS40-HG-SCH Signal Amplifier from FIPLEX. Any omission may result in damage and/or injuries to the Amplifier and/or the Amplifier Operators or Users.

If an instruction is not clear or you consider is missing, please contact immediately to Fiplex. See www.fiplex.com for contact information.

Dangerous Voltage Warning

Any personnel involved in installation, operation or service of this equipment must understand and obey the following:



The power supply unit supplied from the main power contains dangerous voltage level, which can cause electric shock. Switch the main power off prior to any work in such equipment. Any local regulations are to be followed when servicing Signal Amplifiers. Authorized service personnel only are allowed to service Signal Amplifiers while the main is switched on.



R&TTE Compliance Statement

This equipment complies with the appropriate essential requirements of Article 3 of the R&TTE Directive 1999/5/EC.



Station Ground

Signal Amplifiers, feeders, donor antenna, service antenna/s and auxiliary equipment (splitters, tabs, etc.) are required to be bonded to protective grounding using the bonding stud or screw provided with each unit.



Electrostatic Discharge

Static electricity means no risk of personal injury but it can severely damage essential parts of the Signal Amplifier, if not handled carefully.

Parts on the printed circuit boards as well as other parts in the Signal Amplifier are sensitive to electrostatic discharge.

Never touch printed circuit boards or uninsulated conductor surfaces unless absolutely necessary.

If you must handle printed circuit boards or uninsulated conductor surfaces, use ESD protective equipment, or first touch the Signal Amplifier chassis with your hand and then do not move your feet on the floor.

Never let your clothes touch printed circuit boards or uninsulated conductor surfaces.



Disposal of Electric and Electronic Waste

Pursuant to the WEEE EU Directive electronic and electrical waste must not be disposed of with unsorted waste. Please contact your local recycling authority for disposal of this product.

2. Product Description.

The DHS40-HG-SCH Signal Amplifier are single channel amplifiers that operates in the frequency range of 806-824MHz for United States.

This Signal Amplifiers amplifies the RF signal of a Base Station or Transmitter equipment without the need of a previous amplification (driver, power amplifier).

The system receives the BTS or Transmitter signal to be amplified, filters, amplifies and re-radiates through the connected antenna/s.

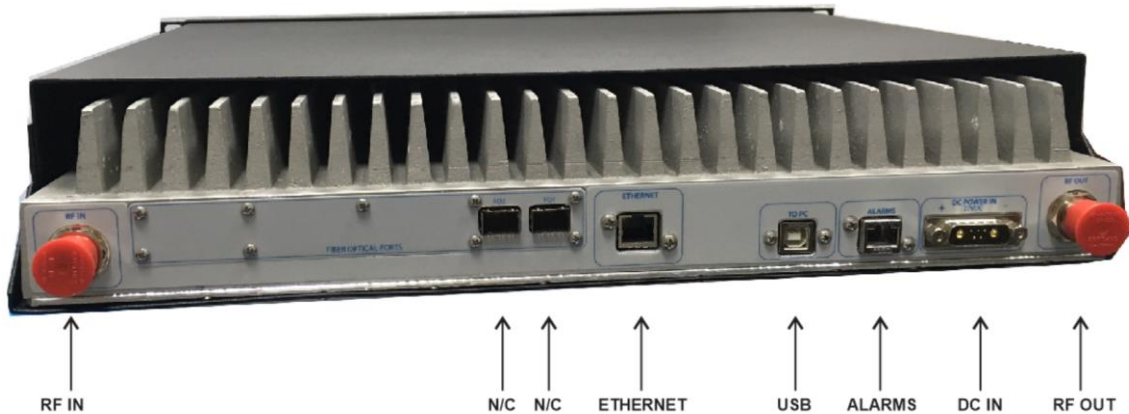
This signal amplifier is capable of handling one single channel, narrow band. It is not intended to be used as a multiple carrier signal amplification. The channel BW and frequency position can be tuned via a software interface.

The intermediate filtering of this equipment is performed using FPGA filtering technology and, among many, it has the following features:

- High Selectivity.
- Channel filter BW selection.

This Signal Amplifier has a compact heavy duty 2 RU cabinet for indoor usage.

3. Ports



4. Commissioning

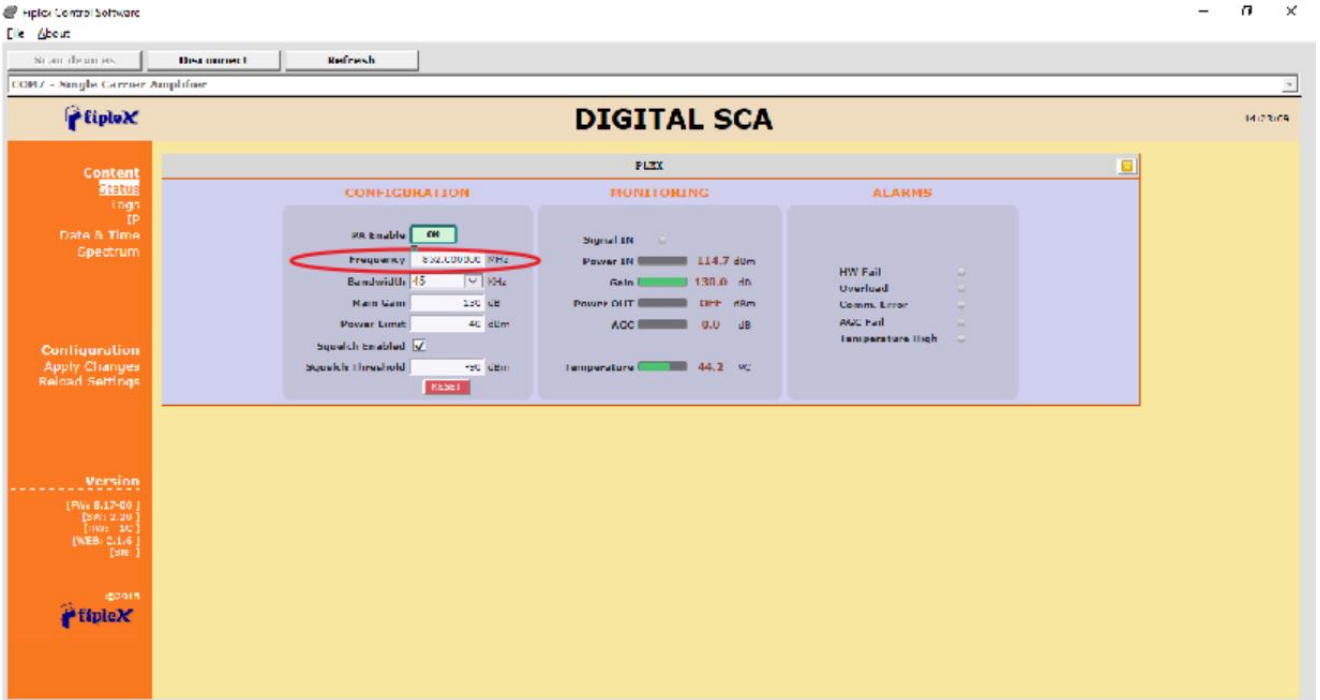
1. Connect RF IN and RF OUT. N type female connectors are used in the Signal Amplifier.
2. Once RF ports of the Signal Amplifier are properly loaded connect the DC port. Electrical installation must provide differential and termo-magnetic breaker elements according to electric safety international regulations.
3. Signal Amplifier chassis must be properly DC grounded.
4. Turn ON DC power.
5. Once the Signal Amplifier has been powered, it takes about 20 seconds to run a booting routine. After that time Signal Amplifier is ready to be connected via USB cable to a computer running FCS Software in order to be properly configured. See **Part 2 Software** of this manual to install FCS.

5. Starting Operation

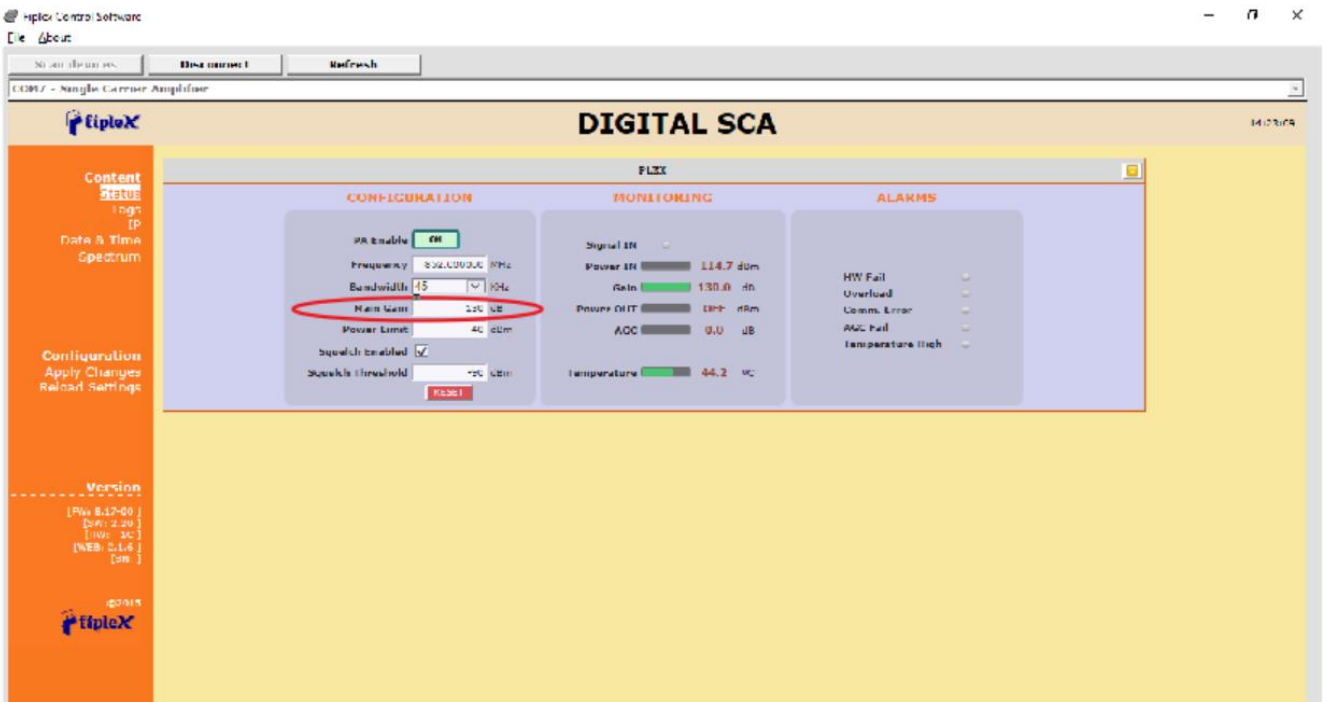


BE SURE THAT BOTH RF PORTS ARE PROPERLY LOADED EITHER WITH 50 OHMS DUMMY LOADS, OR RADIATING SYSTEMS.

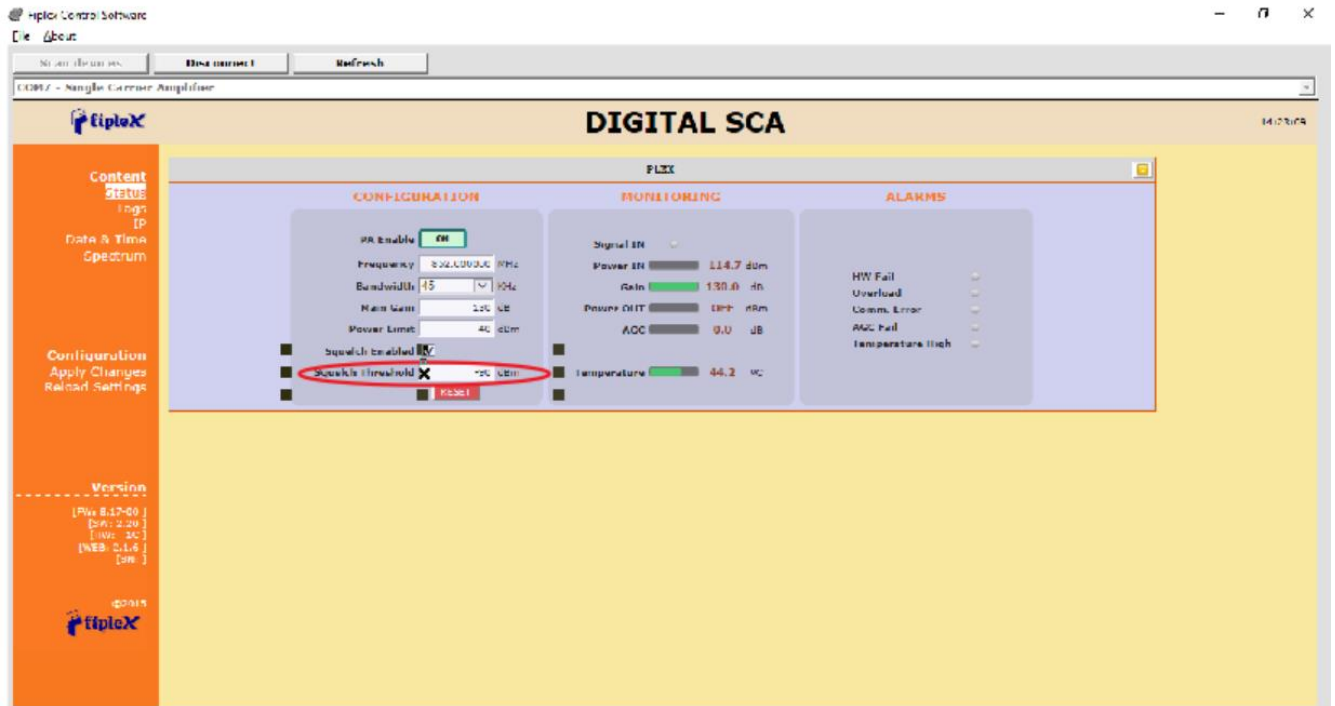
1. Turn on the Signal Amplifier, connect computer to Signal Amplifier through USB cable, and run Fiplex Control Software.
2. Setup desired channel frequency. Since Signal Amplifier is a single channel device, user has to know what frequency is used in Base Station or Transmitter.



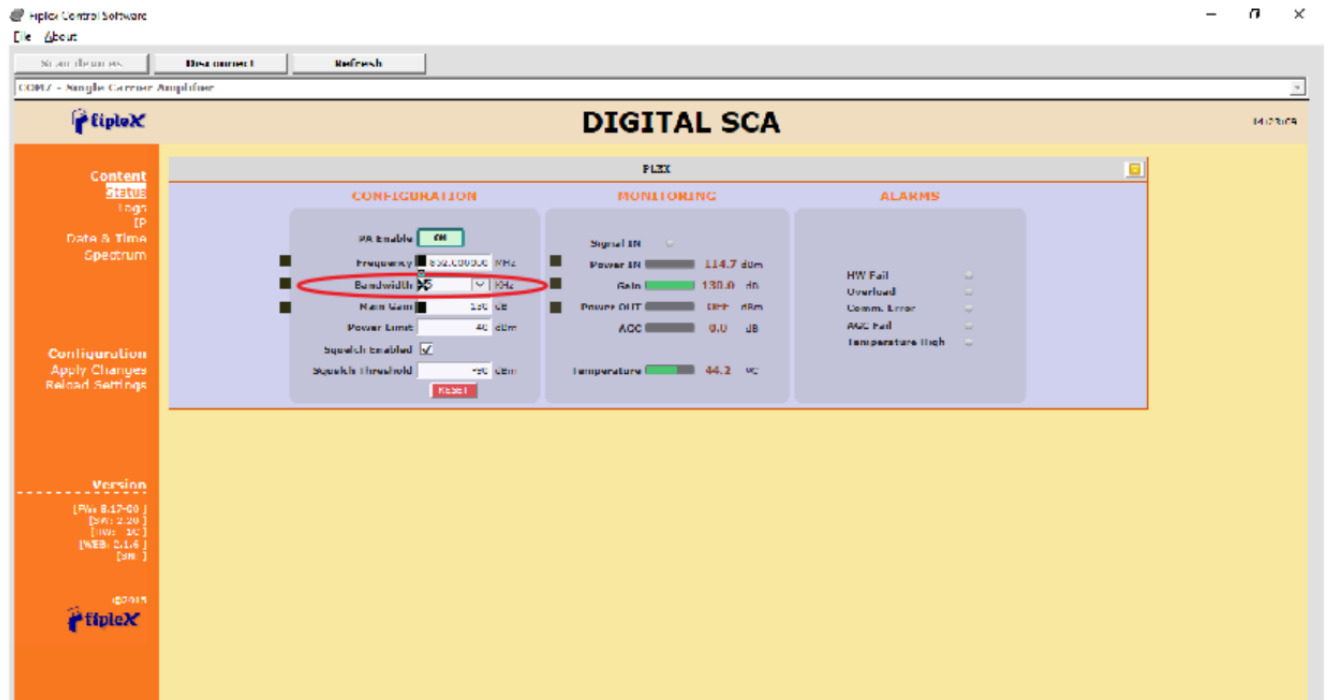
3. Setup desired operating gain using FCS.



4. Set up squelch settings.



5. Setup desired filter bandwidth



Part 2 SOFTWARE

1. Introduction

Fiplex Signal Amplifier can be fully configured and monitored in local and remote mode.

- Local mode:
 - USB port with Windows desktop application
- Remote mode:
 - Remote Web server

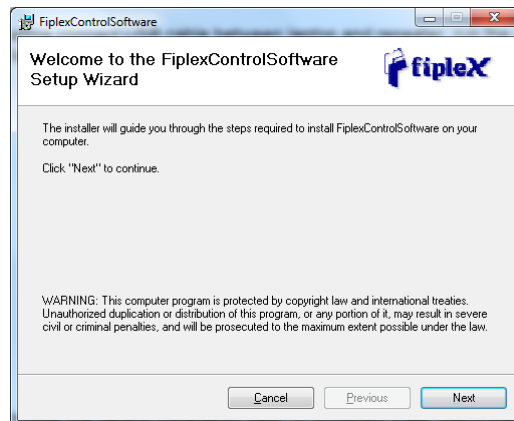
In following section, each control mode (configuration / monitoring) are described.

2. Local Software. Desktop application through USB port

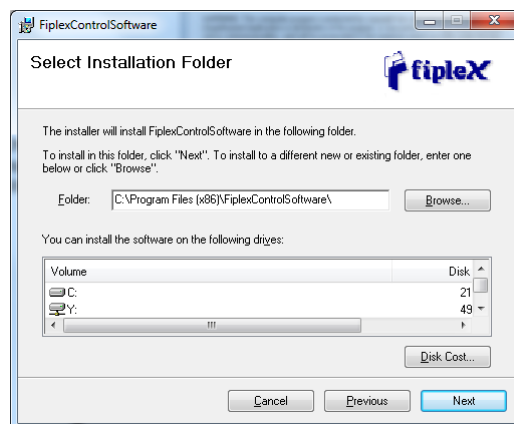
2.1. Installation

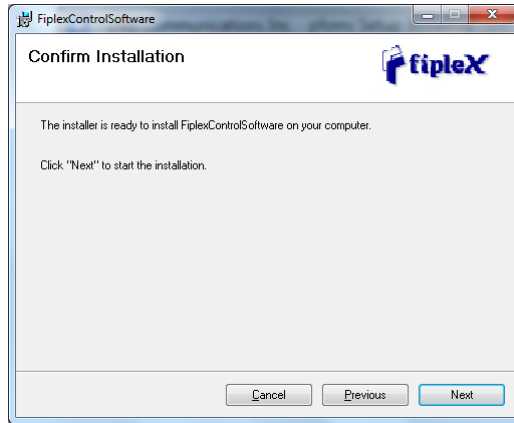
The following section will describe the steps to be followed in order to install and use the Fiplex Control software with your Fiplex Signal Amplifier.

1. Before connect USB cable between computer and Signal Amplifier, run the FiplexControlSoftware.msi File. Next screen will appear...

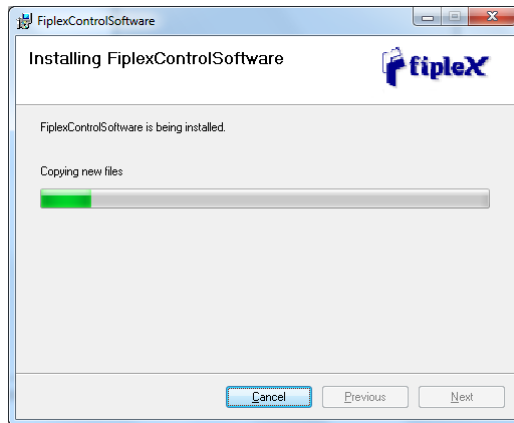


2. Choose the default installation path "C:\Program Files (x86)\FiplexControlSoftware". Note that this can change according to your system configuration (32bits or 64bits), language and Windows Version.

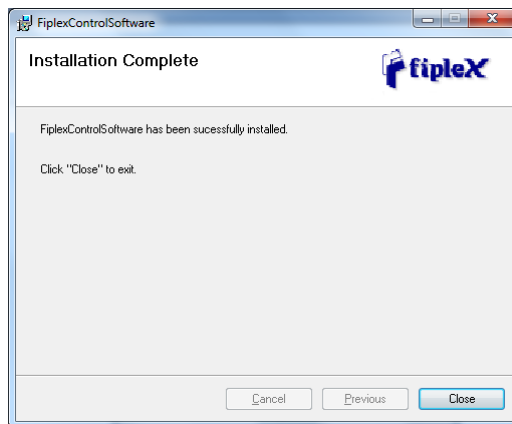




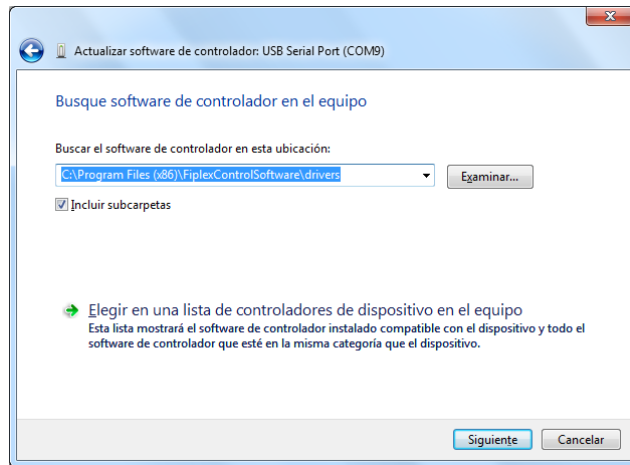
3. The installer will start to copy the necessary files.



4. After installation has completed, a shortcut in user desktop will appear.



5. Connect USB cable between computer and Signal Amplifier, keeping the Signal Amplifier powered off. Usually, drivers will be automatically installed, but depending on Windows version, screen asking for drivers of new device can appear. Drivers can be found in application folder: C:\Program Files (x86)\FiplexControlSoftware\drivers”.



6. Turn on the Signal Amplifier



BE SURE THAT RF PORTS ARE PROPERLY LOADED EITHER WITH 50 OHMS DUMMY LOADS, OR RADIATING SYSTEM.

7. Execute the Fiplex Control Software. Next window will appear:



User interface controls:

- Scan Devices Button: refresh the available COM ports and identify Fiplex devices
- Connection Button: connect / disconnect software from Signal Amplifier
- List of available devices: below two buttons, is placed a dropdown list that shows all available COM ports. Available COM ports not related to Fiplex Signal Amplifier will be shown with its number and "Unknown device" label. COM ports related to Fiplex Signal Amplifier will show a device description.
- Embedded Web browser: graphical area where configuration and monitoring parameters will be shown.

- File menu: contains menus to save Signal Amplifier configuration to a file and load configuration from file to Signal Amplifier.

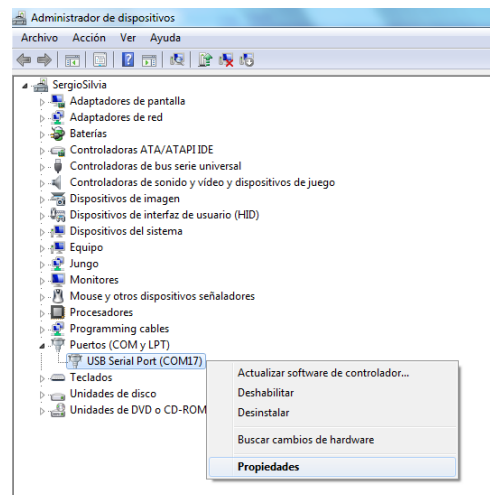
NOTE: if Fiplex Signal Amplifier is not turned on, related COM port will appear as “Unknown device”

8. Click “Scan Devices”

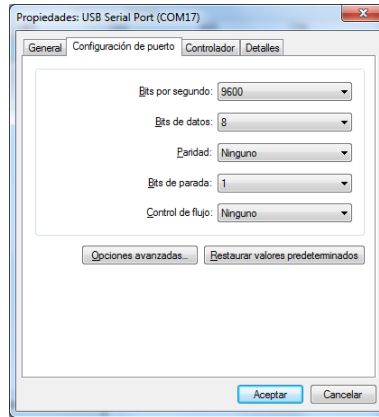


Now, the Fiplex Digital Signal Amplifier is shown in the list of available devices, and connection button is enabled.

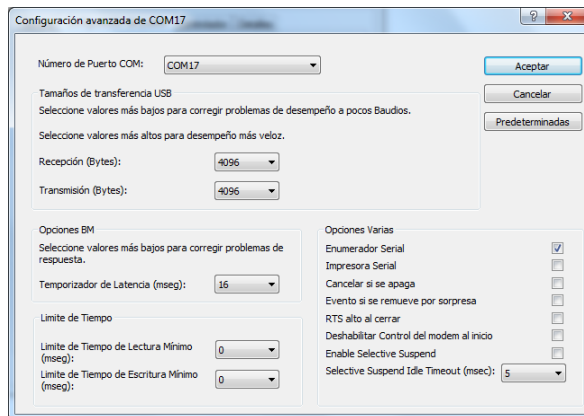
NOTE: Fiplex Signal Amplifier could not appear in list, if COM port number is higher than COM16, depending on Windows version. COM port number can be forced to arbitrary number (below COM16) through Device Administrator. In order to change COM number, click “Properties” pop-up menu:



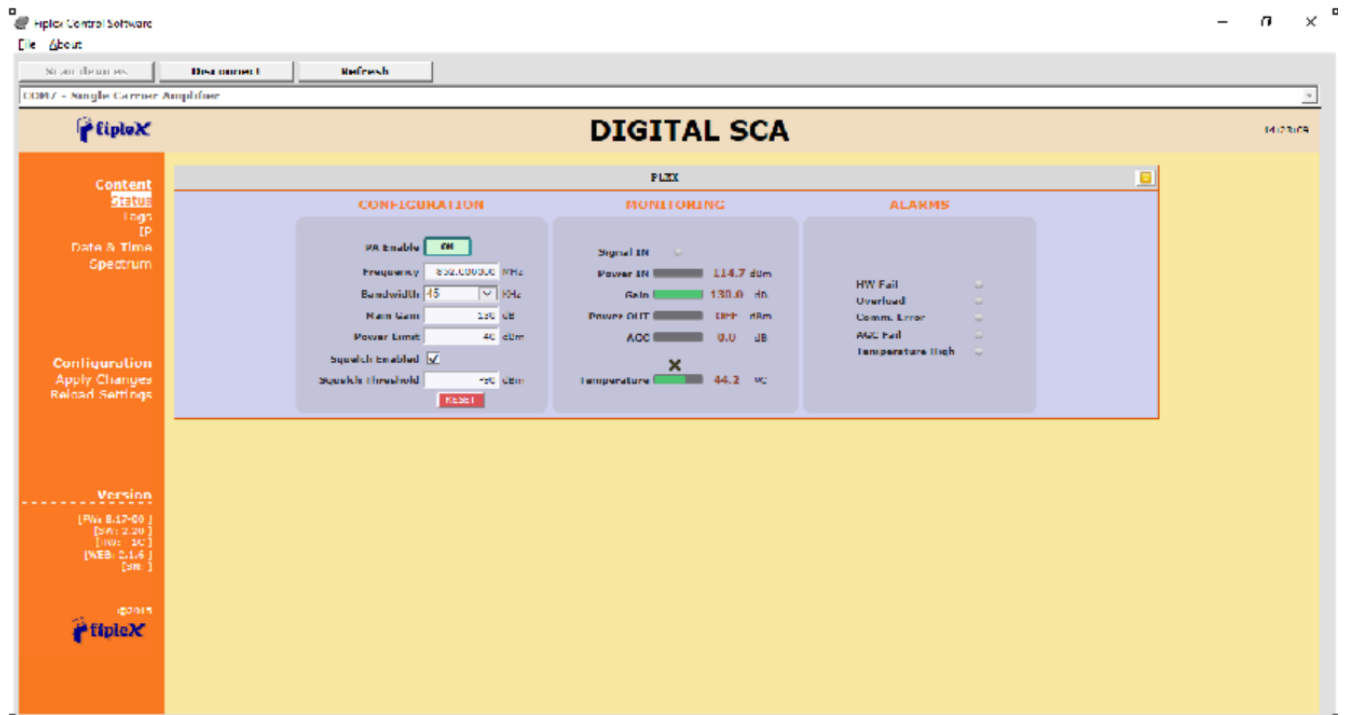
Click “Advanced Options”



Change COM port number



9. Click "Connect". Fiplex Control Software window will be automatically maximized, and web browser will show the configuration screen. Application screens are described in the next section due to these application screens and web pages (in webserver remote mode) are the same.



- Once Signal Amplifier is configured, user can disconnect software using connection button, now labelled "Disconnect". Initial window will be shown.

If Signal Amplifier is disconnected or turned off, while Fiplex Control Software is connected to device, software will go back to initial window. Moreover, if some communication problem occurs while device is monitored, the software will go back to initial state as well.