

# Web Pad

## USERS MANUAL

*Model*

# AquaPAD+

**First International Computer, Inc.**



---

---

---

---

## Copyright

Copyright © FIC (First International Computer) Corporation 2005. All rights reserved.

Disclaimer: FIC Corporation shall not be liable for technical or editorial errors or omissions contained herein; nor for incidental or consequential damages resulting from furnishing this material, or the performance or use of this product. FIC Corporation reserves the right to change product specification without notice. Information in/of this document may change without notice.

No part of this document may be copied, reproduced, or transmitted by any means, for any purpose without prior written permission from FIC Corporation.

## Information to User

### USA - Federal Communications Commission (FCC)

This device complies with Part 15 of FCC Rules. Operation of the devices in a Wireless LAN System is subject to the following two conditions:

- This device may not cause harmful interference.
- This device must accept any interference that may cause undesired operation.

### Exposure to Radio Frequency Radiation

The radiated output power of the Wireless module is far below the FCC radio frequency exposure limits. Nevertheless, the Wireless module shall be used in such a manner that the potential for human contact during normal operation is minimized.

The transmitter and the antenna are permanently installed inside the Web Pad, and are specific for this model (not for generic device). For compliance with FCC radiation exposure limits.

This equipment has been tested and found to comply with the limits for a Class B digital device, pursuant to Part 15 of the FCC Rules. These limits are designed to provide reasonable protection against harmful interference in a residential installation. This equipment generates, uses and can radiate radio frequency energy and, if not installed and used in accordance with the instructions, may cause harmful interference to radio communications. However, there is no guarantee that interference will not occur in a particular installation. If this equipment does cause harmful interference to radio or television reception, which can be determined by turning the equipment off and on, the user is encouraged to try to correct the interference by one of the following measures:

- Reorient or relocate the receiving antenna.
- Increase the separation between the equipment and receiver.
- Connect the equipment into an outlet on a circuit different from that to which the receiver is connected.
- Consult the dealer or an experienced radio/TV technician for help.

**FCC Caution:** To assure continued compliance, any changes or modifications not expressly approved by the party responsible for compliance could void the user's authority to operate this equipment (example - use only shielded interface cables when connecting to computer or peripheral devices).

This device complies with Part 15 of the FCC Rules. Operation is subject to the following two conditions: (1) This device may not cause harmful interference, and (2) this device must accept any interference received, including interference that may cause undesired operation.

### IMPORTANT NOTE:

This equipment complies with FCC radiation exposure limits set forth for an uncontrolled environment.

End users must follow the specific operation instruction for satisfying RF exposure compliance.

### Canada - Industry Canada (IC)

- This device complies with RSS 210 of Industry Canada.



## Safety Instructions

The AQUAPAD+ has been tested for conformance to international safety regulations. Like any electronic device, however, the AQUAPAD+ should be used with care. To protect yourself from possible injury and to minimize the risk of damage to the AQUAPAD+, read and follow the safety instructions in this preface.

## General Guidelines

- ?? Read all of these instructions.
- ?? Save these instructions for future use.
- ?? Follow all warnings and instructions marked on the AQUAPAD+.
- ?? Except as explained elsewhere in this manual, do not attempt to service the AQUAPAD+ yourself. Opening or removing covers that are marked "Do Not Remove" might expose you to dangerous voltage points or other risks. Refer all servicing of marked components to qualified personnel.

## Installation Restrictions

1. Follow all warnings and instructions marked on the product.
2. Unplug this product from the wall outlet before cleaning. Do not use liquid cleaners or aerosol cleaners. Use a damp cloth for cleaning.
3. Do not use this product near water, for example, near a bathtub, washbowl, kitchen sink or laundry tub, in a wet basement or near a swimming pool.
4. Do not place this product on an unstable cart, stand, or table. The product may fall, causing serious damage to the product or harm to individuals.
5. Avoid using a telephone (other than a cordless type) during an electrical storm. There may be remote risk of electric shock from lightning.
6. Do not use the telephone to report a gas leak in the vicinity of the leak.
7. Slots and openings in the cabinet and the back or bottom are provided for ventilation; to ensure reliable operation of the product and to protect it from overheating, these openings must not be blocked or covered. The product should never be placed near or over a radiator or heat register, or in a built-in installation unless proper ventilation is provided.
8. This product should be operated from the type of power indicated on the marking label. If you are not sure of the type of power available, consult your dealer or local power company.
9. Do not allow anything to rest on the power cord. Do not locate this product where persons will tread on the cord.
10. If an extension cord is used with this product, make sure that the total ampere rating of the equipment plugged into the extension cord does not exceed the extension cord ampere rating. Also, make sure that the total rating of all products plugged into the wall outlet does not exceed the fuse rating.
11. Never push objects of any kind into this product through cabinet slots as they may touch dangerous voltage points or short out parts that could result in a fire or electronic shocks. Never spill liquid of any kind on the product.
12. To reduce the risk of fire, use at least No. 26 AWG wire for the telecommunication line cord.
13. Always disconnect all telephone lines & all power cords from the wall outlet before servicing or disassembling this product. And, refer it for servicing to qualified service personal under the following conditions:
  - a. When the power cord or plug is damaged or frayed.
  - b. If liquid has been spilled into the product.
  - c. If the product has been exposed to rain or water.
  - d. If the product does not operate normally when the operating instructions are followed. Adjust only those controls that are covered by the operating instructions, since improper adjustment of other controls may result in damage and will often require extensive work by a qualified technician to restore the product to normal condition.
  - e. If the product has been dropped or the cabinet has been damaged.
  - f. If the product exhibits a distinct change in performance, indicating a need for service.

## Electrical Restrictions

**WARNING:** This equipment is designed for connection to a grounded (earthed) outlet. The grounding type plug is an important safety feature. To reduce the risk of electrical shock, damage to your equipment, or loss of data, do not disable this feature.

## Power Cord Set Requirements

The power cord set (appliance coupler, flexible cord, and wall plug) you received with the AQUAPAD+ meets the requirements for use in the country where you purchased the equipment.

Power cord sets for use in other countries must meet the requirements of the country where you use the AQUAPAD+. For more information on power cord set requirement, contact your local authorized dealer, reseller, or service provider.

## General Requirements

The requirements listed below are applicable to all countries:

1. The length of the power cord set must be at least 6.0 feet (1.8 m) and a maximum of 14.76 feet (4.5 m).
2. All power cord sets must be approved by an acceptable accredited agency responsible for evaluation in the country where the power cord set will be used.
3. The power cord set must have a minimum current capacity of 10A and a normal voltage rating of 125 or 250 volts AC, as required by each country's power system.
4. The appliance coupler must meet the mechanical configuration of an EN 60320. / IEC 320 Standard Sheet C13 connector, for mating the appliance inlet on the AQUAPAD+.

## Country-Specific Requirements

Power Cord Set Requirement		
Country	Accredited Agency	Applicable Note Numbers
Australia	EANSW	1
Austria	OVE	1
Belgium	CEBC	1
Canada	CSA	2
Denmark	DEMKO	1
Finland	FIMKO	1
France	UTE	1
Germany	VDE	1
Italy	IMQ	1
Japan	JIS	3
The Netherlands	KEMA	1
Norway	NEMKO	1
Sweden	SEMKO	1
Switzerland	SEV	1
United Kingdom	BSI	1
United States	UL	2

### Note:

1. Flexible cord must be <HAR> Type HO5VV-F, 3-conductor. 1.0 mm<sup>2</sup> conductor size. Power cord set fittings (appliance coupler and wall plug) must bear the certification mark of the agency responsible for evaluation in the country where it will be used.
2. Flexible cord must be Type SVT or equivalent. No. 18 AWG, 3-conductor. Wall plug must be a two-pole grounding type with a NEMA 5-15P (10A, 125V) or NEMA 6-15P (15A 250V) configuration.
3. Appliance coupler, flexible cord, and wall plug must bear a "T" mark and registration number in accordance with the Japanese Dentori Law. Flexible cord must be Type VCT or VCTF, 3-conductor, 0.75mm<sup>2</sup> conductor size. Wall plug must be a two-pole grounding type with a Japanese Industrial Standard C8303 (15A, 125V) configuration.

## Battery (Lithium)

**NOTE:** The following caution statement is located in the service and operating manual or on the label adjacent to the battery.

### 1. English

CAUTION: DANGER OF EXPLOSION IF BATTERY IS INCORRECTLY REPLACED. REPLACE ONLY WITH SAME OR EQUIVALENT TYPE RECOMMENDED BY THE MANUFACTURER. DISPOSE OF USED BATTERIES ACCORDING TO THE MANUFACTURER'S INSTRUCTIONS.

### 2. French

IL Y A DANGER D'EXPLOSION S'IL Y A REMPLACEMENT INCORRECT DE LA BATTERIE. REMPLACER UNIQUEMENT AVEC UNE BATTERIE DU MÊME TYPE OU D'UN TYPE RECOMMANDÉ PAR LE CONSTRUCTEUR. METTRE AU RÉBUT LES BATTERIES USAGÉES CONFORMÉMENT AUX INSTRUCTIONS DU FABRICANT.

### 3. German

VORSICHT ! Explosionsgefahr bei unsachgemäßen Austausch der Batterie.  
Ersatz nur durch denselben oder einem vom Hersteller empfohlenem ähnlichen Typ.  
Entsorgung gebrauchter Batterien nach Angaben des Herstellers.

### 4. Swedish

Explosionsfara vid felaktigt batteribyte.  
Använd samma batterityp eller en ekvivalent typ som rekommenderas av apparattillverkaren. Kassera använt batteri enligt fabrikantens instruktion.

### 5. Danish

Lithiumbatteri- Eksplosionsfare ved fejlagtig håndtering.  
Udskiftning må kun ske med batteri af samme fabrikat og type.  
Lever det brugte batteri tilbage til leverandoren.

### 6. Norwegian

Eksplosjonsfare ved feilaktig skifte av batteri.  
Benytt samme batteritype eller en tilsvarende type anbefalt av apparatfabriknten.  
Brukte batterier kasseres i henhold til fabrikantens instruksjoner.

### 7. Finnish

Paristo voi räjähtää, jos se on virheellisesti asennettu.  
Vaihda paristo ainostaan laitevalmistajan suosittelemaan tyyppiin.  
Hävitä käytetät paristo valmistajan ohjeiden mukaisesti.



## Table of Contents

<b>Chapter 1</b>	<b>1</b>
<b>Welcome to AQUAPAD+!</b>	<b>1</b>
Safe use of your AQUAPAD+ .....	2
<b>Chapter 2</b>	<b>5</b>
<b>Getting Started</b>	<b>5</b>
Unpacking System .....	5
Package Contents.....	5
AQUAPAD+ Internet Connection.....	6
Powering Up .....	7
<b>Chapter 3</b>	<b>9</b>
<b>Identifying the Parts</b>	<b>9</b>
Front View.....	9
Right Side View .....	12
Top View .....	13
Rear View .....	14
Rapid Charging Cradle (Optional).....	14
Setting up the charging cradle .....	16
<b>Appendix I</b>	<b>17</b>
<b>Specifications</b>	<b>17</b>
Hardware Specifications.....	17
Software Specifications.....	18
<b>Appendix II</b>	<b>21</b>
<b>AC-DC Adapter Guidelines</b>	<b>21</b>
<b>Appendix III</b>	<b>22</b>
<b>Troubleshooting</b>	<b>22</b>



## Chapter 1

# Welcome to AQUAPAD+!

### **Congratulations on your purchase of AQUAPAD+!**

You have purchased a high quality, highly scalable basis for your computing needs.

The AQUAPAD+ has the following advantages:

?? **Sleek Design and Smart Organization:** The design of the AQUAPAD+ encompasses both functionality and elegance. The touch panel and stylus replace a mouse and keyboard, allowing effortless input and Internet access.

?? **Compact Size:** Ultra-slim and light, the AQUAPAD+ weighs less than 1.2 Kg and is smaller than B5 paper. The wide 8.4" TFT LCD with sharp 800 x 600 resolution makes the AQUAPAD+ ideal for Internet browsing on the go.

?? **Well-rounded Performance:** The Transmeta Crusoe TM5900 (800 MHz) low power consumption CPU and Code Morphing Software (CMS) technology minimize power consumption, giving a battery life of 3~3.5 hours.

?? **All-in-one Solution:** The all-in-one design of the AQUAPAD+ lets you get connected anywhere, any time, with efficiency superior to ordinary PDAs. Besides using an embedded Windows CE.net OS, it can also come loaded with Windows@XPe which is compatible with many devices and has a full suite of utilities.

?? **Wireless Internet Access:** The support for the 802.11g wireless standard allows you to browse, email, download multimedia, play games, shop, and chat online. Via its access point, the AQUAPAD+ can expand wireless networks to spaces such as meeting rooms, offices, hotel rooms, hospitals, or kiosks (from 160 feet (50m) indoors up to 1000 feet (300m) outdoors). Mobility and wireless Internet access are now at your fingertips.

?? **Flexible Expansion:** The AQUAPAD+ is upgradable and includes one built-in type II PCMCIA/ CardBus slot and two USB ports. The optional charging cradle station comes with four additional USB ports and one battery connector for a second battery backup. With compact flash or hard drive module flexibility on the main system, users can run various applications with the most cost-effective storage solution.

Read this User's Manual carefully before unpacking and setting up your AQUAPAD+. Refer to this User's Manual first if you encounter any problems. Keep this manual on hand for future reference.

### **Safe use of your AQUAPAD+**

Your AQUAPAD+ is designed to be as safe as possible. The guidelines that follow ensure correct usage.

#### **Routine Care**

To keep your AQUAPAD+ working properly:

- /// Do not attempt to disassemble or modify your AQUAPAD+.
- /// Do not place anything on the display.
- /// Avoid using or storing the AQUAPAD+ in places where static electricity or electrical interference is likely to occur.
- /// Avoid using or storing the AQUAPAD+ in places where there are sudden temperature variations or condensation.
- /// Avoid using or storing the AQUAPAD+ in direct sunlight.
- /// Keep your AQUAPAD+ away from excessive moisture and temperature extremes. Do not expose the device to liquids or precipitation.
- /// Operate your AQUAPAD+ with the main battery pack installed, even when using external power. This ensures the system has the necessary power to operate when disconnected from external power.
- /// Store your AQUAPAD+ in its cradle when not in use.
- /// To clean the device, wipe the display and the exterior with a soft, damp cloth moistened only with water. Do not use soap or other cleaning products, as they will discolor the finish and damage the display.

#### **Battery Care**

- /// Do not heat or attempt to disassemble the battery. Do not place the battery in water or expose it to flames.
- /// Do not subject the battery to strong impact, such as hitting it with a hammer, stepping on it or dropping it.
- /// Do not puncture the battery.
- /// Do not attempt to service the battery.
- /// Replace only with batteries designed for this product.
- /// If the battery has not been used for three months, charge and discharge it for two full cycles before recommencing normal use.

### **AC-DC Adapter Care**

- /// Use only the supplied AC-DC adapter or as specified by the manufacturer. Other adapters may cause damage to the AQUAPAD+; such damage is not covered under the warranty.
- /// Grasp the plug, not the cord, when unplugging the adapter from a wall socket.
- /// If the power cord or adapter becomes damaged (has exposed or severed wires, etc.), replace with a new AC-DC adapter. Use of damaged adapters may cause fire or electrical shock.
- /// Power off and disconnect the AQUAPAD+ from the AC-DC adapter before unplugging the adapter from the wall socket.

### **TFT LCD Display Care**

- /// Do not spray liquid directly on the display or allow excess liquid to drip inside the device.
- /// Do not place anything on the display.
- /// Do not scratch the surface of the display with hard objects.
- /// Do not expose the display to direct sunlight or strong ultraviolet light for extended periods of time.

### **Travel Care**

- /// Take the AQUAPAD+ AC-DC adapter with you.
- /// Pack your AQUAPAD+ in the Carrying Bag or a protective case and carry it as cabin baggage. Do not check it with your luggage.
- /// Do not use your AQUAPAD+ on an airplane. The radio may function even though you are working off-line, and interfere with aircraft navigation.
- /// Be aware of the possible effect of airport security devices on your device. There are three types of airport security devices: X-ray machines, magnetic detectors (the device you walk through), and security magnetic wands. It is recommended that you prevent exposure of your device to magnetic detectors and security magnetic wands.

### **Shipping Care**

- /// Safeguard your data by making a backup copy.
- /// Turn off your AQUAPAD+ and disconnect all external devices.
- /// Pack your AQUAPAD+ and all external devices (e.g. power cords and AC-DC adapter) in the original packing boxes or in similar packaging with sufficient protective packing material.



## Chapter 2

---

# Getting Started

### Unpacking System

Before unpacking your AQUAPAD+ System, prepare a suitable workspace for your AQUAPAD+. You need a steady, level, and clean surface near a wall outlet.

When opening the box of the AQUAPAD+, make sure not to damage the box. Keep it and all packing material for future shipping needs.

Check the following components are included in the box and are not damaged. If any of these components are missing or appear damaged, contact your system dealer immediately.

### Package Contents

- 
- ✍ **AQUAPAD+ System Unit (OS and Applications)**
  - ✍ **Stylus Pen**
  - ✍ **User's Manual**
  - ✍ **AC-DC Adapter**
  - ✍ **AC Power Cord**
  - ✍ **Battery (in Accessory Box)**
  - ✍ **Carrying Bag (Optional)**
  - ✍ **Rapid Charging Cradle (Optional)**
  - ✍ **Mini USB Conversion Cable (Optional)**
  - ✍ **Mini VGA Conversion Cable (Optional)**

### AQUAPAD+ Internet Connection

AQUAPAD+ is designed to offer convenient Web browsing. The wireless local area networking feature lets you experience real "anytime, anywhere" mobility. Information that you or your business need is available wherever you are. With 802.11g wireless LAN support, your AQUAPAD+ can connect to wireless networks, or wired networks and modems using the Type II PCMCIA card slot or USB ports. The AQUAPAD+ wireless Internet connection diagram is shown in [Figure 2.1] below.

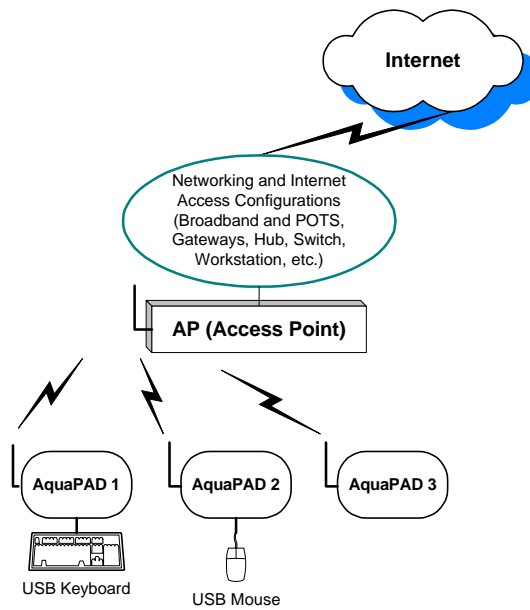


Figure 2.1 AQUAPAD+ Internet Connection

---

## Powering Up

AQUAPAD+ features a two-way power supply that lets you use either the battery or household AC current.

### Using the Battery

The primary source of power for the AQUAPAD+ is the battery. The 2400mAh, 14.8V, 35.5 W, 4-cell Lithium battery combined with the Code Morphing Software technology of the Crusoe processor provides up to 3 hours of battery life at full operation (with Internet access).

The battery is accessible from the rear of the AQUAPAD+. Recharging is possible using the AC-DC adapter supplied with the AQUAPAD+. It is not necessary to remove the battery pack except to replace it with a fresh battery pack.

#### To remove the battery pack:

1. Turn off the AQUAPAD+.
2. Open the battery cover.
3. Slide the latch in the direction of the arrow shown in [Figure. 2.2].
4. Remove the discharged battery and replace with a new battery.
5. Replace the battery cover.
6. Turn on the AQUAPAD+.

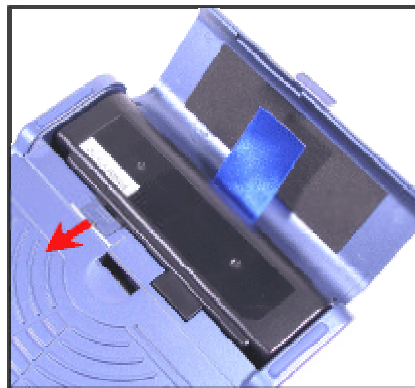


Figure 2.2 Removing the battery pack



#### CAUTION

##### Battery charging requirement:

To lengthen battery life and maximize performance, we recommend you completely charge then discharge the battery at least three times before commencing normal use.

**To charge/discharge battery:**

1. Use the battery as the main power supply. When the power meter icon on the toolbar shows low power, or the Battery Life LED Indicator starts blinking, plug the AC-DC adapter in and charge until the battery is full.
2. Repeat this cycle three times.

**Using the AC-DC Adapter**

1. If you prefer to operate the AQUAPAD+ on AC power, use the supplied AC-DC adapter. Connect the power adapter into the DC-in jack on the AQUAPAD+. Alternatively, you can plug the AC-DC adapter to the optional charging cradle. Connect the AQUAPAD+ to the cradle.
2. Plug the power adapter to a wall socket.



**Figure 2.3 The AC-DC adapter of the AQUAPAD+**



## Chapter 3

### Identifying the Parts

#### Front View

Refer to [Figure 3.1] below to familiarize yourself with the features of the AQUAPAD+.

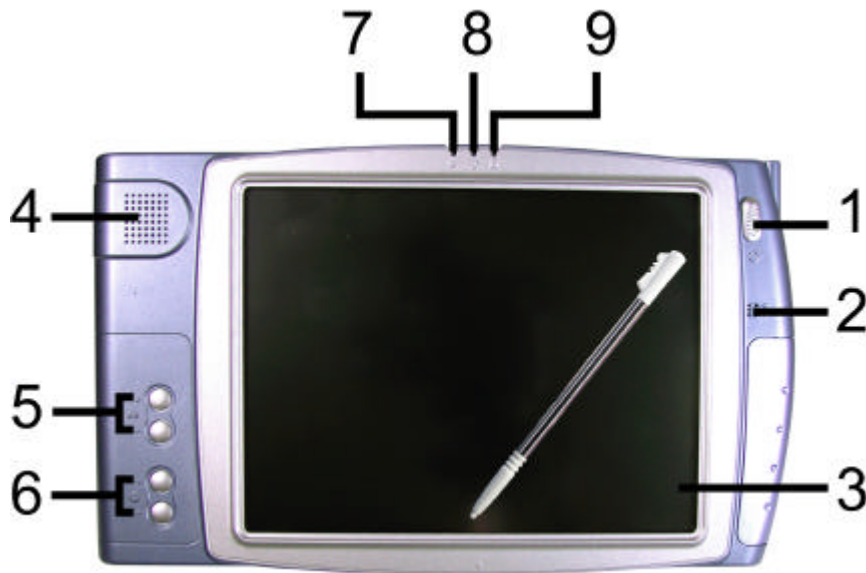


Figure 3.1 Front View of the AQUAPAD+

- 1. Power Button:**  
Press this button to turn power on; press this button for more than 4 seconds to turn power off. Press the button for less than 4 seconds to enter the AQUAPAD+ into suspend mode.
- 2. Built-in Microphone**
- 3. TFT LCD Display:**  
The wide 8.4" TFT LCD integrates a touch panel that provides 800 × 600 resolution in 16-bit high color and makes AQUAPAD+ ideal for Internet browsing on the go. Data can be entered from the touch screen using the stylus and soft keyboard. The soft keyboard is displayed by clicking the bottom right area on the screen. You can also use a USB keyboard plugged into the USB ports of the AQUAPAD+. The AQUAPAD+ supports most USB keyboards and pointing devices.



**Figure 3.2 Enlarged picture of the Power Button and Internal Microphone**

- 4. Built-in Speaker:**  
The built-in speaker is located on the upper left front corner. You can set the volume through the operating system or applications or by using the Volume Control Buttons. Sound from the speaker is muted when headphones are used.
- 5. Volume Control Buttons:**  
To increase or decrease the sound volume, press the upper or lower volume control button.
- 6. Brightness Control Buttons:**  
To adjust the brightness of the screen, press the upper or lower brightness control button.

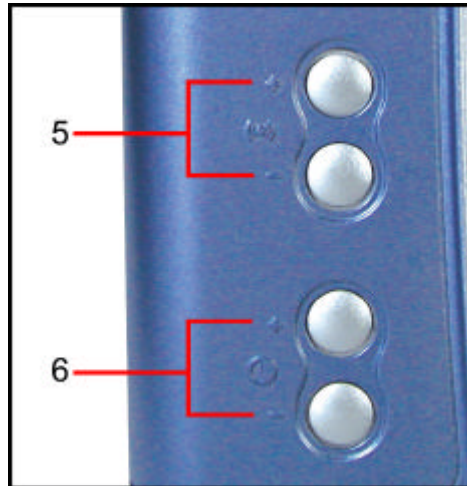


Figure 3.3 Enlarged picture of the Volume/Brightness Control Buttons

- 7. **Suspend Indicator (Left):**  
The yellow LED blinks when the system is in suspend mode.
- 8. **Power Indicator (Middle):**  
The green LED lights up when the system is powered on.
- 9. **Battery charge/Low Indicator (Right):**  
The amber LED lights when the battery is charging. The LED is off when the battery is fully charged. The LED blinks amber rapidly when battery level is low.

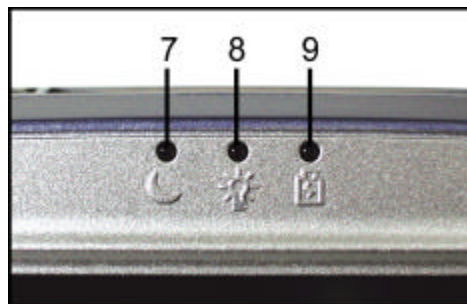


Figure 3.4 Enlarged picture of LED Indicators

### Right Side View

Features on the right side of the AQUAPAD+ are shown in [Figure 3.5].

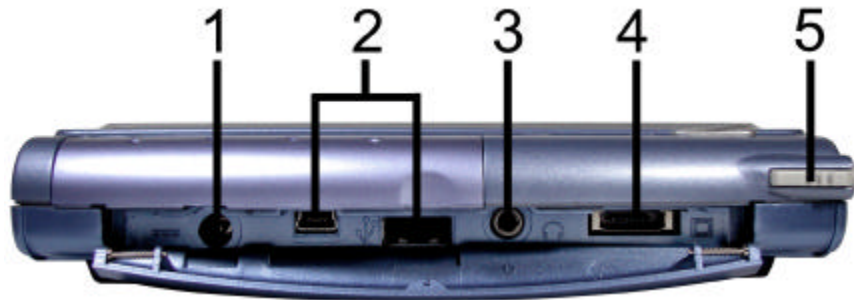


Figure 3.5 Right Side View of the AQUAPAD+

- 1. DC-in Jack:**

The AQUAPAD+ is normally a battery-operated device. The battery operating capacity is three hours at full power with Internet access, and up to 48 hours in STR mode. When not in use, it is recommended that the AQUAPAD+ battery be recharged. The recharging mechanism is built into the AQUAPAD+. Insert the supplied AC-DC adapter into the DC-in jack. Recharging time may take up to two hours for a fully discharged battery pack.
- 2. Mini USB Port and Standard USB Port:**

AQUAPAD+ has two USB ports. The USB ports support most USB keyboard and pointing devices. The mini USB can be connected to a standard USB port with the USB convert cable (optional). It is recommended you store the AQUAPAD+ in the cradle when using a USB keyboard or USB pointing device.
- 3. Audio Out Jack:**

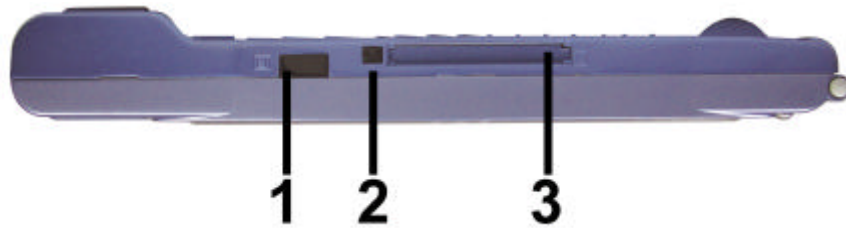
The Audio Out Jack is located next to the USB ports of the AQUAPAD+. You can connect it to standard audio headsets to provide a private stereo audio experience. When a headset is inserted, the speaker is muted.
- 4. Mini VGA-out port:**

The mini VGA-out port allows you to use the AQUAPAD+ with a VGA monitor or projector. Connect the AQUAPAD+ to the monitor or projector using a cable with a mini-VGA plug (optional).
- 5. Stylus Pen:**

The stylus included with the AQUAPAD+ is used to activate the touch screen. It is partially visible on the top right front corner. Do not use anything other than the tip of the stylus to interact with the display or you may damage the display surface.

**Top View**

Features at the top of the AQUAPAD+ are shown in [Figure 3.6].

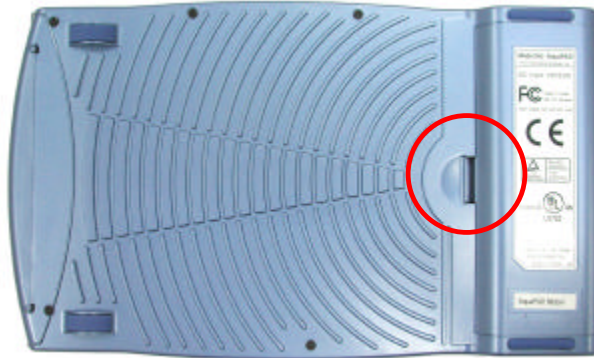


**Figure 3.6 Top View of the AQUAPAD+**

1. **Infrared Transceiver:**  
The FIR (IrDA) provides active synchronization and a wireless data transfer interface.
2. **Expansion PC Card Socket (PCMCIA Type II):**  
PCMCIA cards can be inserted in this slot for added functionality.
3. **Expansion PC Card Eject Button.**  
To remove the inserted PC card, push this eject button.

### Rear View

Features at the back of the AQUAPAD+ are shown in [Figure 3.7].



**Figure 3.7 Rear View of the AQUAPAD+**

#### **Battery Cover:**

The 2400 mAh, 14.8 V, 35.5 W, 4-cell Lithium battery combined with the Code Morphing Software advantage of the Crusoe processor provides up to three hours of battery life at full power with Internet access.

#### **Rapid Charging Cradle (Optional)**

The AQUAPAD+ includes a cradle into which the AQUAPAD+ can be attached to keep it upright and stable during use. The cradle has the following features:

- /// Power charging function
- /// Less than 2 hrs charging time
- /// Battery charging set for additional battery charging at the same time
- /// Auto priority circuit for system recharging
- /// Smart identification of charge indicator
- /// Four USB ports for additional device functionality

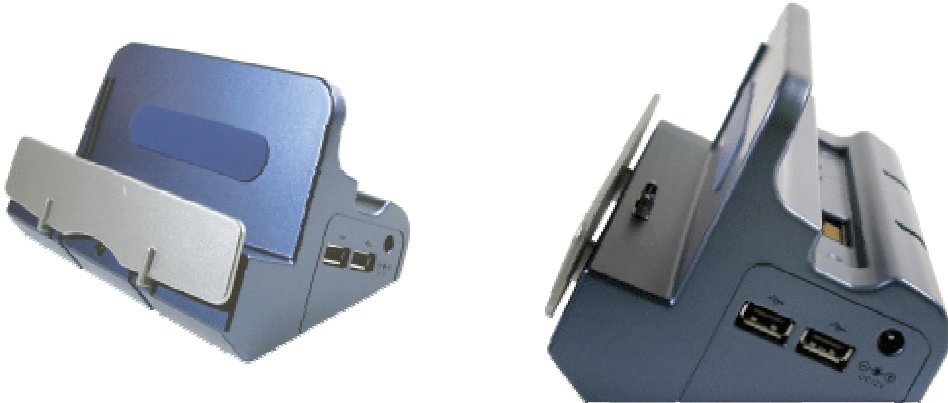


Figure 3.8 Rapid Charging Cradle



Figure 3.9 The Rapid Charging Cradle with battery

### Setting up the charging cradle

To place the AQUAPAD+ in the cradle for charging:

- /// Locate the connector on the bottom of the AQUAPAD+. A rubberized cover protects this connector.
- /// Remove the rubberized cover to display the connector as shown in **[Figure. 3.10]**.
- /// Place the AQUAPAD+ in the cradle with the connectors properly aligned as shown in **[Figure. 3.11]**.



Figure 3.10 Rubberized connector cover



Figure 3.11 AQUAPAD+ with the cradle



## Appendix I

# Specifications

### Hardware Specifications

Item	Feature
Dimensions	268.5 mm (L) x 160.0 mm (W) x 26.0 mm (H)
Weight	1.20 kg (2.65lbs.)
Processor	Transmeta Crusoe TM5900 (800 MHz)
Southbridge	ALi M1535+
Memory	/// Default 128/256MB DDR SO-DIMM /// Max system memory support: 512MB
Storage	/// Factory configurable 20GB HDD or 64 MB Compact Flash /// Microdrive support (CF type, by customer request)
Display	/// TFT-LCD 8.4", 800 x 600 color TFT LVDS. /// Touch screen
Battery/Life	/// 2400 mAH, 14.8V, 35.5 W, 4-cell Lithium battery. /// Battery Life: 3 hours at full power with Internet access. /// Battery charge time: 2 hours
Power Adapter	/// 65W Max. 100 ~ 240V /// Output Voltage: 20 V, 3.25 A /// Dimension: 107 mm (L) x 47 mm (W) x 30 mm (H)
Expansions	One CardBus PCMCIA Type II Slot
Input/Output & Connectors	/// One DC in power jack /// Two USB 2.0 ports (one standard, one mini-type) /// One mini-VGA out port /// One audio out jack (3D Audio) /// One built-in speaker (1 Watt) /// One built-in microphone /// One IrDA 1.1 FIR /// One cradle connector
Switches	/// Power switch (slide) x 1 /// Brightness button x 2 (up and down) /// Volume button x 2 (up and down)
LED	/// 1 (left) Suspend: blinking and off (yellow) /// 1 (middle) for power: On and Off (green) /// 1 (right) for charger: blinking for battery low. On for DC-in charging, and Off for others (amber)
Case Material	Magnesium alloy

Item	Feature
Wireless LAN	<p>Built-in 802.11g WLAN</p> <p><b>Antenna</b></p> <ul style="list-style-type: none"> <li>☞ Chip antenna</li> </ul> <p><b>Frequency Range</b></p> <ul style="list-style-type: none"> <li>☞ 2.400GHz ~ 2.4835GHz (subject to local regulations)</li> </ul> <p><b>Number of Selectable Channels</b></p> <ul style="list-style-type: none"> <li>☞ USA, Canada: 11 channels</li> <li>☞ Europe: 13 channels</li> <li>☞ Japan: 14 channels</li> </ul> <p><b>Modulation Technique</b></p> <ul style="list-style-type: none"> <li>☞ Direct Sequence Spread Spectrum (CCK, DQPSK, DBPSK)</li> <li>☞ Orthogonal frequency division multiplexing(OFDM)</li> </ul> <p><b>Security</b></p> <ul style="list-style-type: none"> <li>☞ 64/128/256-bit WEP Encryption and Wi-Fi Protected Access</li> </ul> <p><b>Media Access Protocol</b></p> <ul style="list-style-type: none"> <li>☞ CSMA/CA (Collision Avoidance) with ACK</li> </ul> <p><b>Max. Transmit Power</b></p> <ul style="list-style-type: none"> <li>☞ 802.11b:19.45dBm</li> <li>☞ 802.11g:19.66dBm</li> </ul> <p><b>Max. SAR (1g)</b></p> <ul style="list-style-type: none"> <li>☞ 802.11b:0.1090 W/kg</li> <li>☞ 802.11g:0.1350 W/kg</li> </ul> <p><b>Supported Bit Rate</b></p> <ul style="list-style-type: none"> <li>☞ 1, 2, 5.5, 6, 9, 11, 12, 18, 24, 36, 48 and 54Mbps</li> </ul> <p><b>Operation Power</b></p> <ul style="list-style-type: none"> <li>☞ DC 5V</li> </ul> <p><b>Throughput</b></p> <ul style="list-style-type: none"> <li>☞ 20.5Mbps @ 54Mbps</li> <li>☞ 5.7Mbps @ 11Mbps</li> </ul> <p><b>Sensitivity</b></p> <ul style="list-style-type: none"> <li>☞ -68dBm@54Mbps</li> <li>☞ -80dBm@11Mbps</li> </ul>
O/S options	<ul style="list-style-type: none"> <li>☞ Windows CE .NET</li> <li>☞ XP embedded</li> <li>☞ Midori (by request)</li> <li>☞ XP Home (by request)</li> </ul>
Accessories	<ul style="list-style-type: none"> <li>☞ AC-DC adapter</li> </ul> <p><b>Optional Items:</b></p> <ul style="list-style-type: none"> <li>☞ Mini USB cable</li> </ul>

Item	Feature
	<ul style="list-style-type: none"> <li>/// Mini VGA cable</li> <li>/// Charging cradle</li> <li>/// Carry bag</li> </ul>

**Software Specifications****Windows XP Embedded Platform Specification**

Item	Feature
Windows XPE	<ul style="list-style-type: none"> <li>/// Media player 9.0 embedded</li> <li>/// Office for XP</li> <li>/// Internet Explorer 6.0</li> <li>/// Outlook Express</li> </ul>
Applications	<ul style="list-style-type: none"> <li>/// Remote Desktop</li> <li>/// Handwriting recognition (optional)</li> <li>/// Screen keyboard</li> <li>/// Windows Update</li> <li>/// Gauge indicator (for battery)</li> <li>/// Adobe Acrobat Reader</li> <li>/// Image Viewer</li> <li>/// Windows Messenger</li> <li>/// Voice over IP Phone Application</li> <li>/// FreeCell</li> <li>/// Solitaire</li> <li>/// GPS Navigator</li> </ul>
Utilities	<ul style="list-style-type: none"> <li>/// Pointer Calibration</li> <li>/// Printing (Local and Remote) (optional)</li> <li>/// File transfer via IrDA</li> </ul>
Wireless Interface & Communication	<ul style="list-style-type: none"> <li>/// WLAN 802.11g</li> <li>/// WAN solution compatible, supports PHS, GSM/GPRS, CDMA module (optional)</li> <li>/// Bluetooth, WCDMA in further development</li> </ul>

**WinCE Platform Specification**

Item	Feature
Microsoft Windows CE .NET 4.2	<ul style="list-style-type: none"> <li>/// Media player 7.0 embedded</li> <li>/// Pocket word (embedded)</li> <li>/// Office Viewer (Excel, Power Point)</li> <li>/// Internet Explorer 6.0</li> <li>/// Inbox</li> </ul>
Applications	<ul style="list-style-type: none"> <li>/// RDP 5.1</li> <li>/// ICA 6.0 (optional)</li> <li>/// Handwriting recognition (optional)</li> <li>/// Virtual K/B</li> <li>/// Remote update (optional)</li> <li>/// Gauge indicator (for battery)</li> <li>/// PDF Viewer</li> <li>/// Image Viewer</li> <li>/// Windows Messenger</li> <li>/// Voice over IP Phone (optional)</li> </ul>

Item	Feature
	<ul style="list-style-type: none"> <li>/// FreeCell</li> <li>/// Solitaire</li> <li>/// GPS Navigator (optional)</li> </ul>
Utilities	<ul style="list-style-type: none"> <li>/// Pointer Calibration</li> <li>/// Printing (Local and Remote) (optional)</li> <li>/// File transfer via IrDA</li> </ul>
Wireless Interface & Communication	<ul style="list-style-type: none"> <li>/// WLAN 802.11g</li> <li>/// WAN solution compatible, supports PHS, GSM/GPRS, CDMA module (optional)</li> <li>/// Bluetooth, WCDMA in further development</li> </ul>

### Midori Platform Specification

Item	Feature
Linux Kernel 2.4.20	X window V 4.0.3
Applications	<ul style="list-style-type: none"> <li>/// Office viewer (optional)</li> <li>/// Ice Window manager v1.2.0</li> <li>/// Mozilla 0.9</li> <li>/// MPEG player---Real player v10.0</li> <li>/// MP3 Player---xmms1.2.7</li> <li>/// Virtual K/B (xkeyboard 0.2)</li> <li>/// Games (optional)</li> <li>/// GPS Navigator</li> </ul>
PIM	<ul style="list-style-type: none"> <li>/// Calculator</li> <li>/// Calendar (support sync. via IrDA)</li> <li>/// Address Book (support sync. via IrDA)</li> <li>/// Note (support sync. via IrDA)</li> <li>/// Alarm Clock</li> <li>/// To Do List</li> </ul>
Utilities	<ul style="list-style-type: none"> <li>/// Xtouch0.2</li> <li>/// Printing (Local and Remote) (optional)</li> <li>/// File transfer via IrDA</li> <li>/// System Configuration Program</li> </ul>
Wireless Interface & Communication	<ul style="list-style-type: none"> <li>/// WLAN 802.11g</li> <li>/// WAN solution compatible, supports PHS, GSM/GPRS, CDMA module (optional)</li> <li>/// Bluetooth, WCDMA in further development</li> </ul>

The specification and appearance are subject to change without notice.

## Appendix II

# AC-DC Adapter Guidelines

This AC-DC adaptor is a dedicated accessory to be used exclusively with the AQUAPAD+. Read these guidelines before use.



### WARNING

- ⚡ Do not use the product at voltages other than the specified voltage. Failure to observe this may cause fire or electrical shock.
- ⚡ Do not use the AC-DC adapter if it emits smoke or a strange odor. Failure to observe this may cause fire or electrical shock.
- ⚡ Do not attempt to disassemble or modify the product. Failure to observe this may cause fire or electrical shock.
- ⚡ If water gets inside the product, immediately unplug the power cord. Continuing to use the product may cause fire or electrical shock.
- ⚡ Wipe off the plug of the power cord if it becomes covered with dust. Failure to do so can cause a fire or electrical shock.



### CAUTION

- ⚡ Do not place heavy objects on the power cord, or allow heavy objects to drop onto it. Do not allow the power cord to become damaged by excessive bending.
- ⚡ Do not short or touch the output terminals of the product while it is plugged in.
- ⚡ Do not touch the power cord with wet hands. This may cause an electrical shock.
- ⚡ Do not subject the product to strong impact or allow it to drop onto hard surfaces. This can cause a malfunction.
- ⚡ Use and appropriate AC-DC Adapter according to the country of use.

## Appendix III

# Troubleshooting

**Problem:** The AQUAPAD+ does not turn on when not connected to AC power.

**Solution:** If the battery charge is too low to run your AQUAPAD+, the Power LED Indicator blinks. Turn off the AQUAPAD+ and replace the battery with a fresh one or connect to AC power.

**Problem:** Battery runs out of power quickly.

**Solution:** High loads on the CPU cause power to run out quickly. The Power LED Indicator starts blinking when power is low. Plug the AC-DC adapter in and recharge the battery until full.

**Problem:** The AQUAPAD+ turns off automatically.

**Solution:** Battery charge is too low or has run out. Tap the screen with the stylus pen to see if the display activates. Replace the battery with a fresh one or plug the AC-DC adapter in to charge the AQUAPAD+. You may lose unsaved data; so save your data regularly.

**Problem:** The AQUAPAD+ locks up when running applications or runs slowly.

**Solution:** The CPU may be overloaded or the AQUAPAD+ is locked up. Close applications that are not in use. If this doesn't work, restart the AQUAPAD+ by turning the power off and on. Be sure to save your data before you restart the system.

**Problem:** The AQUAPAD+ does not turn on or the TFT LCD display appears to be off, even though the power is on.

**Solutions:** ~~///~~The display brightness and contrast are too low. Use the Brightness Control Button to adjust the brightness level of screen image.  
~~///~~The AQUAPAD+ is in Suspend mode. Press the power button to resume full power mode.  
~~///~~The AQUAPAD+ has run out of power. Plug the AC-DC adapter in to charge the AQUAPAD+.

**Problem:** The display is blank.

**Solution:** ~~///~~Adjust the LCD display brightness and contrast by using the Brightness Control Buttons.  
~~///~~Restart the AQUAPAD+.  
~~///~~Plug the AC-DC adapter in to charge the AQUAPAD+.

**Problem:** Screen is dark.

**Solution:** Prolonged exposure to direct sunlight may cause your AQUAPAD+ LCD screen to temporarily darken. This is normal for LCD SCREENS and IS NOT PERMANENT.

**Problem:** Display is difficult to see in sunlight or in dark rooms.

**Solution:** Use the Brightness Control Button to adjust contrast and brightness level for optimal viewing.