



# **P810 Wireless USB Phone User Manual**

- English.....1
- Chinese.....18

## **Federal Communication Commission Interference Statement**

This equipment has been tested and found to comply with the limits for a Class B digital device, pursuant to Part 15 of the FCC Rules. These limits are designed to provide reasonable protection against harmful interference in a residential installation. This equipment generates, uses and can radiate radio frequency energy and, if not installed and used in accordance with the instructions, may cause harmful interference to radio communications. However, there is no guarantee that interference will not occur in a particular installation. If this equipment does cause harmful interference to radio or television reception, which can be determined by turning the equipment off and on, the user is encouraged to try to correct the interference by one of the following measures:

- Reorient or relocate the receiving antenna.
- Increase the separation between the equipment and receiver.
- Connect the equipment into an outlet on a circuit different from that to which the receiver is connected.
  
- Consult the dealer or an experienced radio/TV technician for help.

FCC Caution: Any changes or modifications not expressly approved by the party responsible for compliance could void the user's authority to operate this equipment.

This device complies with Part 15 of the FCC Rules. Operation is subject to the following two conditions: (1) This device may not cause harmful interference, and (2) this device must accept any interference received, including interference that may cause undesired operation.

This transmitter must not be co-located or operating in conjunction with any other antenna or transmitter.

# Contents

## **1. Getting Started**

- 1.1 Charging battery with USB cord charger
- 1.2 Switch the wireless handset On / Off
- 1.3 Handset operation
- 1.4 Pairing up
- 1.5 Icon indications (PC side)
- 1.6 LED light indication for the wireless handset
- 1.7 LED light indication for the USB Dongle

## **2. Using the wireless Handset**

- 2.1 Description of keypads
  - 2.1.1 Skype Call Button
  - 2.1.2. Answer/Call Button
  - 2.1.3 Numeric Buttons
  - 2.1.4 Up/Down Button + Speaker Volume control
  - 2.1.5 Utility Button
    - 2.1.5.1 Website Hotkey
    - 2.1.5.2 Device Setup
    - 2.1.5.3 Pre-Set Website
  - 2.1.6 Call Ending Button + Power On / Off Button

## **3. Making / receiving Skype calls**

- 3.1 Answering phone calls
- 3.2 Making Phone Calls--Calling Stored Contact
- 3.3 Making Phone Calls—Using Skype speed dial
- 3.4 Making Phone Calls—Using Skype out service

## **4. Assigning PC Audio to PC Speakers**

## **5. System Requirement**

## **6. Package**

## **7. Technical Specification**

**Safety Instruction:**

Please read this section carefully before start using wireless USB handset for Skype.

**Battery Safety Instructions**

- Do not burn, disassemble, strike or mutilate the battery. The battery contains toxic materials that could release, resulting in injury.
- There is a risk of explosion if you replace the battery with an incorrect battery type. Use only the battery that came with your phone.
- Remove batteries if storing over 30 days.
- Do not short circuit battery.
- Do not dispose the battery in fire that could result in explosion.
- Use specified chargers only.
- Keep out of the reach of children.

The rechargeable battery must be disposed of properly and may need to be recycled. Refer to your battery's label for battery type. Contact your local recycling center for proper disposal methods.

**Disposal of the device**

Some of the product material can be reuse if you bring them to a recycling point. Please contact your local authorities in case you need more information on the collection points in your area.

**Cleaning**

Clean the headsets with a slightly damp cloth or with an anti-static cloth. Please do not use abrasive solvent for cleaning purpose.

## 1. Getting Started

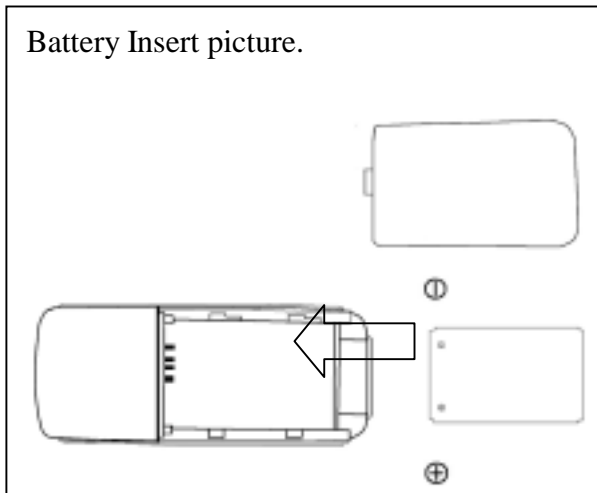
This section provides the Step-By-Step instructions you will need for using Wireless Skype headset.

### 1.1 Charging battery with USB cord charger

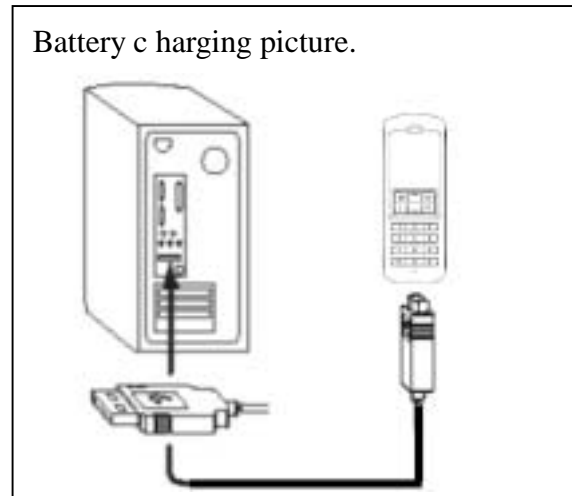
Before you use the wireless Skype handset for the first time, you must make sure that the battery is fully charged. For battery charging, do the following:.

- a) Open the battery compartment.
- b) Insert the battery as indicated. (See below)
- c) Your PC or notebook must be in "Power on" status.
- d) Plug the USB cord charger into the Wireless Skype phone and connect to the USB jack of your PC or notebook.

Battery Insert picture.



Battery c harging picture.



While charging, the LED light is indicated as below:

- a) The Red LED light on the phone will flash when the phone is recharging.
- b) The RED LED light will extinguish when the battery is fully recharged.



## 1.2 Switch the wireless handset On / Off:

It is recommend switching off the handset when the PC is shut down for power saving purpose of the handset battery in order to achieve longer talking/standby hours. To switch the handset On/Off the handset:

- a) Press the call ending button on the handset for 3~5 consecutive seconds.
- b) You will hear a ring tone for on/off status indication once the handset is power on / off.

## 1.3 Handset operation

For wireless handset operation, see the followings:

- a) Please follow the "DRIVER INSTALLATION" in this CD to complete the driver installation.
- b) Plug in the USB dongle to USB jack of your PC or Notebook PC.
- c) Pressing and hold the  key to power on the phone.
- d) Once the  appear in the tool bar, the phone is now ready to use.

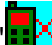
## 1.4 Paring up

As factory default, the Wireless handset and the USB Dongle have already been paired up. Once the driver is properly installed, the wireless handset and the USB Dongle should be in ready to use status.

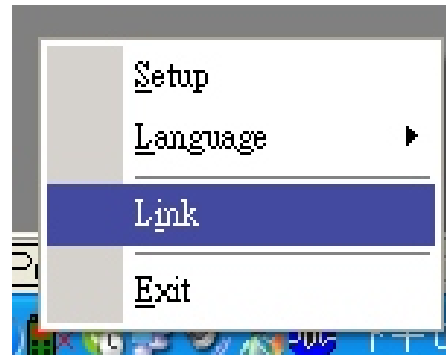
However, If you find the  indicate in the tool bar, check the following:

- i) The wireless handset is power "ON".
- ii) The Dongle is properly installed in the USB jack.

If above i) and ii) are properly installed but the icon still shows , please conduct manual paring procedures as below:

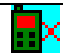
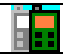







- a) For manual paring, use mouse to point " " and click right hand key on the mouse. You will find this tool bar. (See below)
- b) Use the left key of the mouse and click the "Link" in the tool bar.

c) At the mean time, press and hold the “?” keypad on the wireless handset until the icon  change to . The handset is now ready for use.



### 1.5 Icon indications (PC side)

You will find an icon appear in the tool bar of your PC or notebook. Each icon indicates different status of the wireless handset:

ICON	Phone status indication
	Failure to establish connection between handset and the Dongle. Please check if the handset is power “ON” and the Dongle is properly installed in the USB jack.
	2 or more Dongle are found. Please remove the excess Dongle.
	Unable to find Dongle.
	No driver is installed.
	User choice the “Utility Section”. (See section 2.1.5 for detail)
	Phone is in STAND BY Mode.
	Phone is in SKYPE contact list section. (See section 2.1.1for detail)
	Recharging battery.
	Low in battery. Please recharge the battery. (See section 1.1 for detail)

## 1.6 LED light indication for the wireless handset

There are 2 LED lights on the wireless handset. The flashing of the BLUE and RED LED light indicates:

BLUE	RED	Flashing style	Status Indication
X		Rapidly	Establishing connection with Dongle.
X		Flash every 1 second	Connection established. Handset is ready to use.
X	X	Flash simultaneously	Searching for Dongle. (Unit pairing up in progress)
X	X	Flash and hold	Power On / Off in progress.
	X	Rapidly	Out of reception range / Low in battery
	X	Light up	Battery charging in progress.
-	-	No flash	Handset is power off.

## 1.7 LED light indication for the USB Dongle

There is a BLUE LED light on the USB Dongle. The flashing of the LED light indicates:

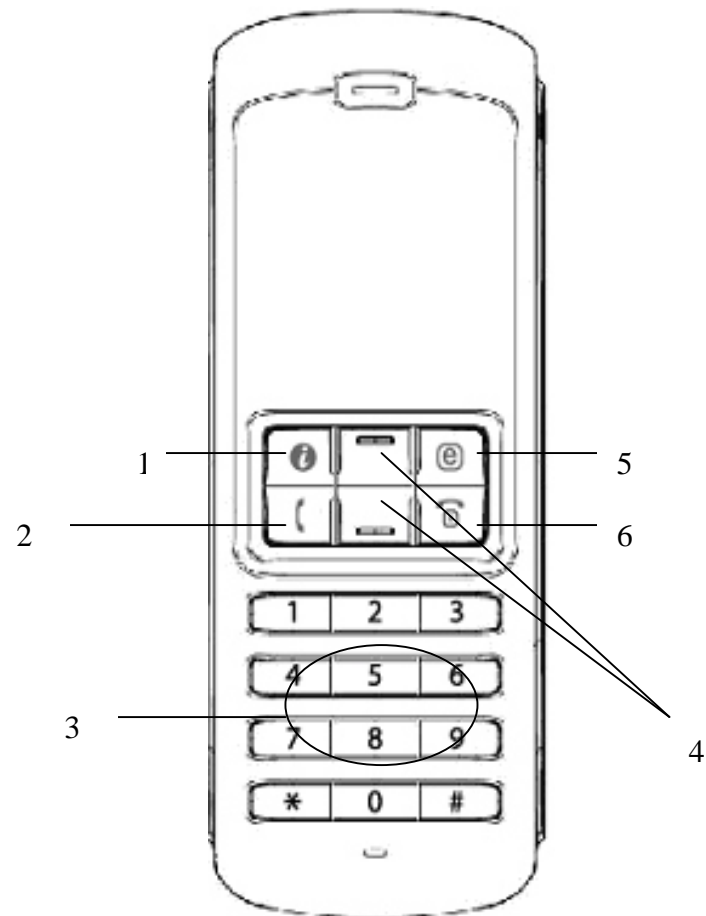
BLUE	Flashing style	Status Indication
X	Rapidly	Connection has just been established.
X	Flash in every 1.5 sec.	Connection established and the handset is ready to use.
X	Short flash in every 3 sec.	Searching for handset. (Unit pairing up in progress)
-	No flash	PC or Notebook is power off. No connection established.



## 2.Using the wireless Handset

This section provides you the basic functions of the wireless handset.

### 2.1 Description of keypads



1. Skype Call Button:

2. Answer/Call Button:

3. Numeric Keys:

4. ▲ Up / ▼ Down+ Speaker Volume Control :

5. Utility Key Selection:

6. Power On / Off + Call Ending Button:

### 2.1.1 Skype Call Button:

When the Skype icon is hidden, press once to activate the Skype program. Press again after Skype Program is opened to make selection from Skype tab screen.



### 2.1.2. Answer/Call Button:

When a call comes in, press this button to answer the call. When you have selected a contact or completed dialing, press this button to call out.



### 2.1.3 Numeric Buttons:

You may use these keys for dialing by inputting the phone number for Skype out service. Also, you may program the speed dialing code for speed dial service in Skype program. (see section 3.3 for detail)

### 2.1.4 Up/Down Button + Speaker Volume control:

Use these buttons to move upward or downward in your contact list and to highlight a contact. You may also use this button to make your selection in other screens. Also, you may adjust the volume by using this bottom while you are on the phone.





### 2.1.5 Utility Button:

Use this button to active the utility user interface. When press the "e" key, the Utility Icon will appear:



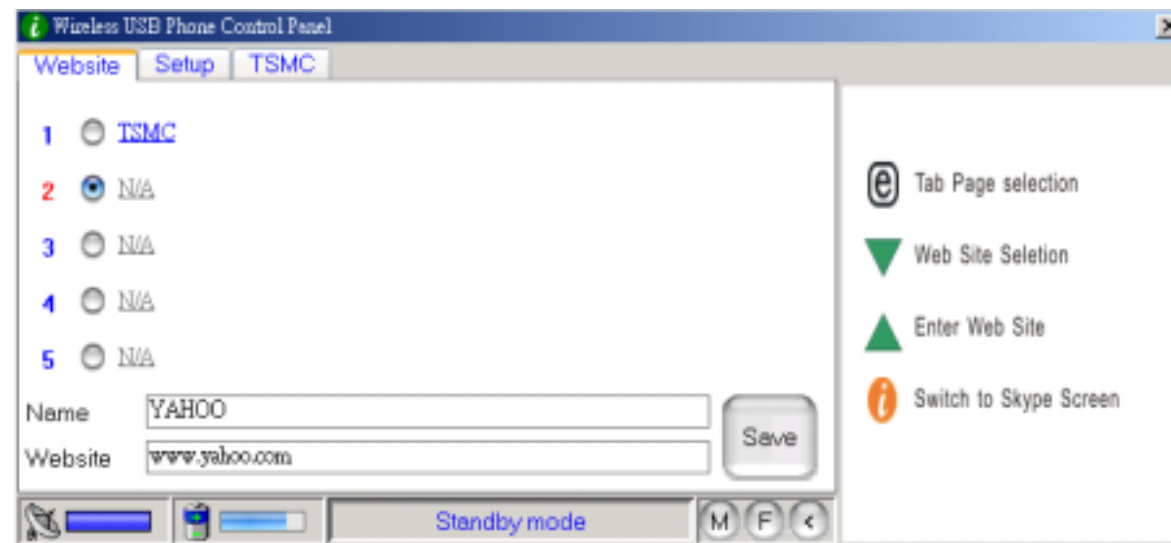
**Remake:**

You will see some icons in this page.

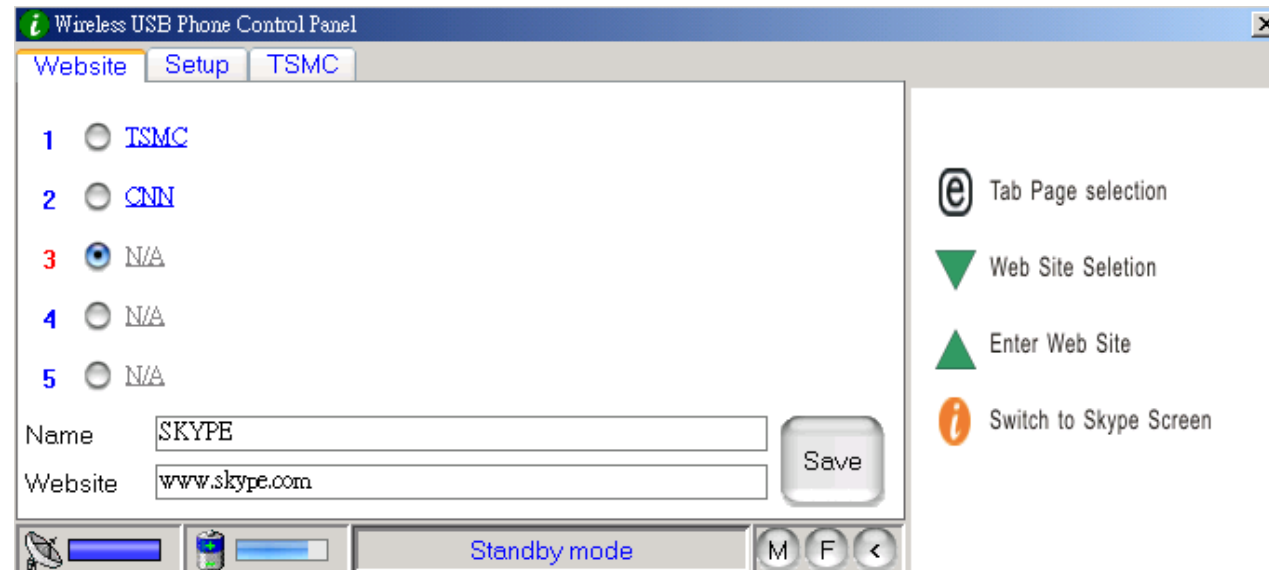
ICON	Indication
	Indicates the reception status.
	Indicates the battery status.
	Quick key for on-line User's Manual.
	Quick key for on-line FAQ and answers.

**2.1.5.1 Website Hotkey**

You may set your favorite website address here to have easy and quick access into the designate website. Follow the simple steps of programming your favorite websites as below.



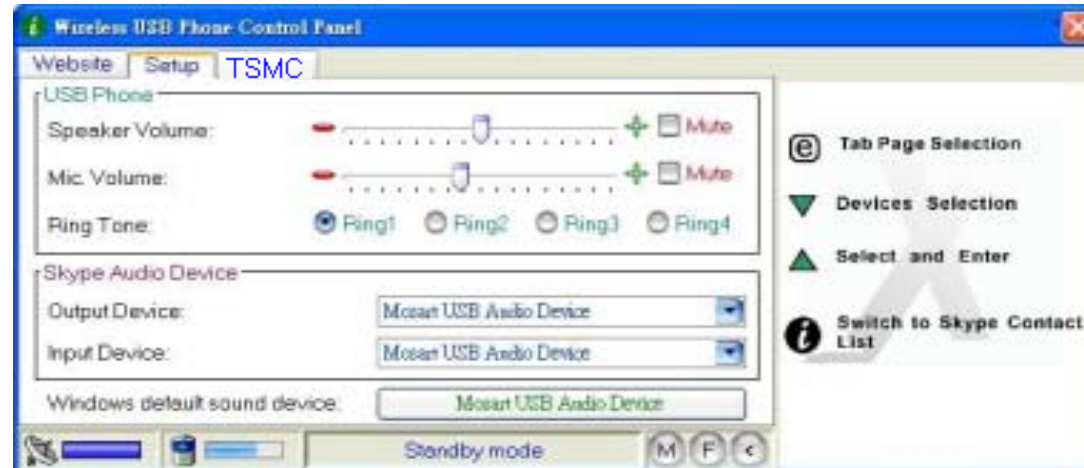
a) Set your favorite website by entering the “Name” and “Website” address in the designated column and click “Save”.



- b) Using the “▼” “ to move to the pre-set website column..
- c) Press the “▲” to enter the selected website.
- d) OR, press the number key listed. (eg. Press “3” for CNN)
- e) The designated website will open on other window.

### 2.1.5.2 Device Setup

You may change your phone set up in this section. Follow the Hint on the right hand site to complete the setups.



#### USB Phone Volume Adjustment

- Using the “▼” to select the sound device you wish to modify.
- Press the “▲” to volume up the speaker and Microphone volume.

#### Ring Tone selection:

- There are 4 tones for you to choose from. Using the “▼” to move to the Ring tone section.
- Press the “▲” to select the desire ring tone type.
- OR, using the numeric key to select the desire ring tone. (eg. Press “1” for Ring 1)

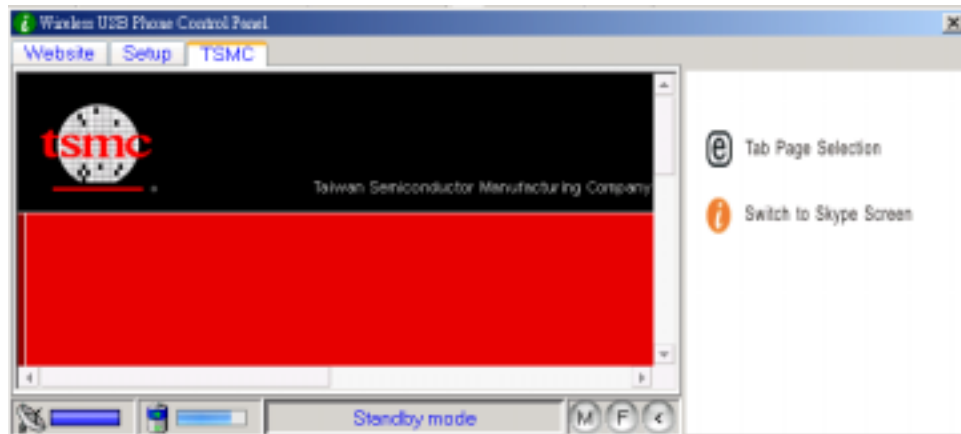
#### Skype Audio Devices:

Please set both output and input device in the Skype Audio Device section to "USB Phone" to get the proper USB Phone function.

If you connect your speaker with your computer units, please change the "Windows default sound device" to your system sound card.

### 2.1.5.3 Pre-Set Website

You may see a pre-set website in this page.



### 2.1.6 Call Ending Button + Power On / Off Button:



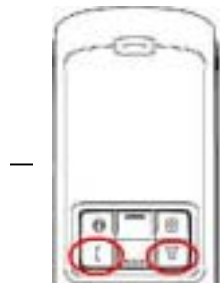
At the end of conversation, press this button to hang up.  
Also, press this key to delete the number dialed when the wrong digit of number is entered in Skype out service.

The phone can also switch the power ON/ OFF for this handset .  
(See section 1.2 for detail)

### 3. Making phone calls:

To make/receive a skype call from the wireless handset, please read this section.

#### 3.1 Answering phone calls



When a call is coming in, the Skype Phone begins to ring and the Skype indicator begins to flash. Press the Answer/Call button to answer the call and begin conversation. When the conversation ends, press the Off/Cancel button to hang up. Then the Skype indicator is extinguished, it indicates that the phone call is ended.

#### 3.2 Making Phone Calls--Calling Stored Contact

If you have stored contact information in the Skype contact list, you may use this list for calling friends as using contact list in your cell phone.

1. Press Skype call button to activate Skype program and contact list.
2. Press Up/down and contact selection button to select desire contact person.
3. Press call button to make phone calls.



### 3.3 Making Phone Calls—Using Skype speed dial

This function is the most convenient and the most useful dialing method offered by the Skype. Just like pressing on a pre-set key on your cell phone to call a friend or relative, you may enjoy the same function in Skype Program and the wireless handset. By assigning a 1- or 2-digit speed dialing code in the Skype Program, you may press the pre-set 1- or 2-digit codes on the USB phone set to call your contacts directly. Even longer numbers for SkypeOut such as local numbers, cell phone numbers, or international numbers can be simplified to a 1- or 2-digit speed dialing code for easy calling.



1. Open Skype window, select “Contact” tab with your mouse. Move the cursor to the contact or SkypeOut number that is to be programmed for speed-dial, then right-click and select “Assign Speed-Dial”.



2. When the setup dialog box pops up, enter one set of numeric code; maximum length is 2 digits. After setup is completed, whenever such contact is highlighted in the future, the speed dialing code will appear. Remember this code; when calling this contact in the future, just dial this 1- or 2-digit code on the wireless handset and press “Call” the call will be made that easy!

### 3.4 Making Phone Calls—Using Skype out service

Skype is a free Internet phone service, and is very convenient when both parties are using the software for conversation on the Internet. You can still enjoy low cost phone services with SkypeOut to make local calls, mobile phone calls, long distance calls, and international long distance calls. To use Skype Out, please apply for an account and purchase credits online at Skype Out website first. With purchased credits for Skype out, you may use your wireless handset to call any phone number in the world.

To make a SkypeOut call, you must enter the number in the following way (even for local calls) : "+" + "country code" + "number". You can also use "00" or "011" before the country code.

Examples for dialing methods (using the country code "1" for calling USA):

1) Press + 1 555 555 1234 (Remark: Press the "0" and hold for 2 sec. It will change to "+")

or

2) Press 00 1 555 555 1234

or


3) Press 011 1 555 555 1234

#### **WARNING:**

Skype software does not support calls to any emergency number nor emergency service (e.g. 211, 911, 999 etc). To perform calls of this type please make sure to use a landline telephone or a cellular/mobile phone.

### 4. Assigning PC Audio to PC Speakers

Skype handset has a built-in audio chip, which is equivalent to an external sound card device. Therefore, when the handset is connected to a PC, the Windows operation system will recognize it as default audio output device and replace the original audio output device. This facilitates plug-and-play of the USB handset, but it may interfere with the music or video files used to be played through your speakers or stereo headset that are connected to the original sound card in your PC once the USB handset is plugged in. To allow music and sound effect be played through the original speakers, you must reset audio output device of your PC.

1. Please click utility key  to call out "SET UP" function
2. To adjust the Skype Audio Device, select the desire device under the "Input Device and "Output device".
3. To check the Windows default sound device, press the button "Setup" to call out windows "Sounds and Audio Devices Properties" (See below Picture A)

4. After the “Sounds and Audio Devices Properties” window is opened, select “Audio” tab, and you will see that the default device for sound playback is “USB Audio Device”.
5. If you wish to have proper sound out from your original speaker, select your system’s build in sound card. (See below Picture B)



Picture A



Picture B

## 5. System Requirement

System Requirement for Wireless Skype handset:

- Win 2000 / Win XP operation system
- 400MHz CPU or above.
- 128MB RAM or above.
- Minimum 15 MB Hard Disk Drive Space.
- Internet connection. (Any broadband connection or 56Kbps dial up modem)

## 6. Package

You will find the package contains:

- Wireless Skype handset x 1 pc
- USB Dongle x 1 pc
- Driver CD x 1 pc
- Rechargeable Battery x 1 pc
- USB recharge cord x 1 pc

## 7. Technical Specification

2.4GHz Wireless Skype Phone Specification	
Operation Frequency	2.4GHZ unlicensed ISM Band(2.400~2.4835GHz)
RF Modulation Method	FSK
USB Spec	USB 2.0 Full Speed Operation Compliant
USB Audio	Compliant with USB Audio Specification V1.0
	Plug&Play with standard (build-in) USB Audio Device Driver.
Battery Capacity	600mAh Li-Ion Battery
Standby Time	> 300 Hours
Talking Time	> 5 Hours
Recharge Supply	4.5V to 7V, can use USB Port as recharging power source
Recharge Current	300mA (TYP.)
Recharge Time	<3Hours

# P810 USB 無線網路話機

## 使用手冊

### 產品內容

- P810無線話機 \*1
- USB接收器 \*1
- USB充電線 \*1
- 電池 \*1
- 安裝光碟CD \*1
- 使用說明書\*1

### 安裝說明

- 請先上網( [www.skype.com](http://www.skype.com) )下載安裝最新版Skype軟體並完成註冊登入
- 執行安裝光碟CD中: P810話機驅動程式 .
- 將USB接收器插入PC or NB的USB埠，並將話機開機，即可開始使用囉!!

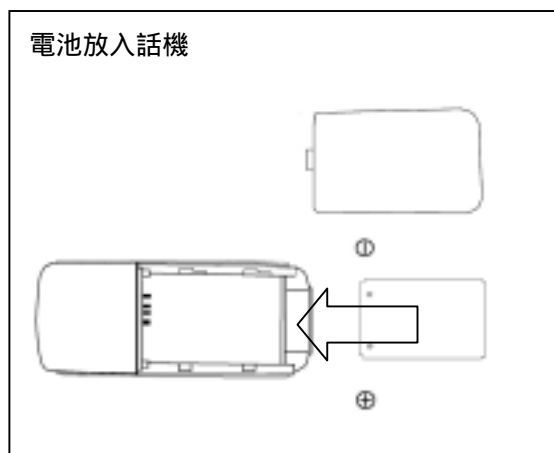
## 一. 開始使用

此節主要是教導使用者快速的使用 P810 話機.

### 1.7 電池充電

當您第一次使用 P810 話機時，請先將電池充滿，充電方法如下：

- 請將電池放入話機，並將 USB 線二頭分別插上 P810 話機及電腦 USB 埠(如下圖)
- 當充電時，P810 話機的面板 LED 燈會呈紅色閃爍；充電完成後 LED 燈會自動熄滅.





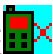

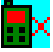

### 1.8 話機 開 / 關 機:

建議當電腦關機或長時間不使用話機時，請將 P810 話機關機，以延長通話及待機時間，開關機方法如下:

- 請按  3~5 秒鐘，即會聽到一長嗶嗶聲，LED 燈會自動 開啟 / 熄滅，即 開 / 關 機完成.

### 1.9 手機操作

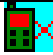








- 請將 USB 接收器插入 PC 的 USB 埠，並將手機開機，此時您會看到電腦螢幕下方工具列出現 ，即表示話機已連線成功，此時即可開始使用 P810 話機；倘若工具列出現的是 ，即表示您並未開機或未連線成功，請確認是否已開機或重新連線.

- b) 重新連線方法如下：請將滑鼠移至 並按滑鼠右鍵出現下圖，此時用滑鼠左鍵點選**對碼(Y)**同時並按住話機的 約 2 秒鐘，直到電腦螢幕下方工具列的 改變為，即表示話機已連線成功。

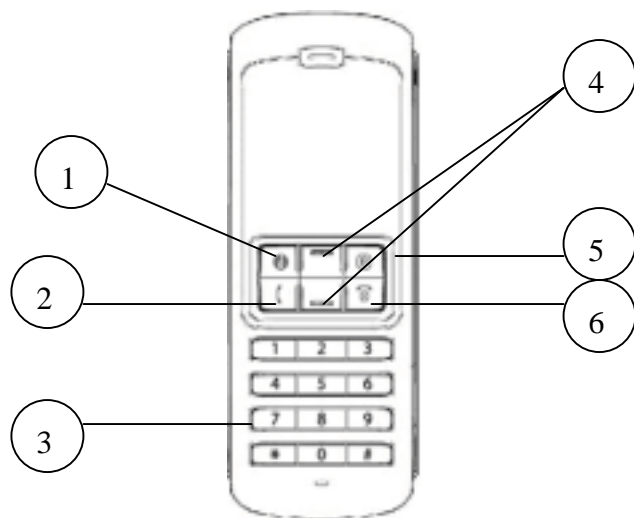


### 1.5 電腦小圖標意義

當您在使用話機時，在電腦螢幕下方工具列的圖標會有不同的改變，其意義如下：

圖標	話機狀態指示
	表示您並未開機或未連線成功，請確認是否已開機或重新連線
	電腦找到 2 個 USB 接收器，請確認只能插 1 個 USB 接收器於 USB 埠上
	電腦找不到 USB 接收器
	驅動程式未安裝
	話機正常使用當中，並處於控制系統定義的狀態下(狀態操作詳四 )
	話機處於待機狀態
	話機正常使用當中，並處於控制 skype 軟體的狀態下(狀態操作詳三 )
	電池充電中
	電池弱電中，請將電池充電

## 二. 話機功能使用簡介




1. **Skype 呼叫鍵**：按一下就可以呼叫 Skype 程式。開啟 Skype 後，再按此鍵，則可以選擇 Skype 的標籤頁面。
2. **接聽 / 撥號鍵**：當對方打電話找你時，可以按此鍵接聽。另外當選定聯絡人或輸完電話號碼後，按此鍵可以直接撥打給對方。
3. **數字鍵**：可以直接輸入對方的電話號碼來撥號，或輸入快速撥號碼，數字會直接呈現在 Skype 的程式上。
4. **(▲)上下(▼)選擇鍵 / 音量大小控制鍵**：在聯絡人名單上可以上下移動反光棒，選擇任一個聯絡人。在其他標籤頁面則可以上下移動反光棒以選取不同項目，亦可在通話中直接調整音量大小。
5. **系統定義鍵**：詳細內容如後所述
6. **開關機 / 掛斷鍵**：通話完畢時按此鍵可以掛斷電話。撥錯號碼時，可按此鍵消除按錯的號碼。長按此鍵可直接關機。







### 三. 話機使用說明

1. 如何接聽電話: 當有人用 Skype 撥號給你時, 話機會發出鈴聲, 同時 LED 燈號會開始閃爍, 此時只要按下「接聽/撥號鍵」, 就可以立刻把電話接起來, 開始通話。當通話結束後, 按下「掛斷鍵」, 就可以把電話切斷。
2. 如何打電話: 當你的 Skype 程式中已有內建聯絡人名單時, 你可以利用這個名單來撥電話給你的親朋好友, 方法如下:
  - Skype 呼叫鍵叫出 Skype 程式。
  - 再按「Skype 呼叫鍵」, 直到頁面跳到「聯絡人」標籤。
  - 按「上下鍵」選擇要撥號的聯絡人。
  - 按「撥號鍵」即可。
3. 如何用 SkypeOut 撥打電話: 如果要撥市話、手機或長途、國際電話, 就可以利用 SkypeOut 這項服務。使用前可以先申請帳號購買點數。方法為按一下「Skype 呼叫鍵」叫出「Skype」, 接著用話機的數字鍵輸入對方的完整電話號碼。輸入方法如下:
  - 要打市話 (02)2959-0000 用話機按 00-886-2-29590000
  - 要打手機 0930-1234XX 用 USB 話機按 00-886-930-1234XX
  - 要打美國 +1-614-60320XX 用 USB 話機按 00-1-614-60320XX
  - 要打大陸市話 +86-020-12345678 用 USB 話機按 00-86-20-12345678
4. 如何使用快速撥號: 請要在 Skype 軟體裡為一些經常聯絡的特定對象, 預先設定 1 至 2 位數快速撥號代碼, 以後再直接用 USB 話機按下預先設定的 1 至 2 位數代碼, 即可「撥號」給聯絡人。方法為: 先打開 Skype 視窗, 用滑鼠點選「聯絡人」頁面標籤, 移到要設定快速撥號的聯絡人或 SkypeOut 號碼上, 按一下滑鼠右鍵, 點選「設定快速撥號」, 出現設定視窗後, 輸入一組數字, 最多兩位數。設定完成後, 以後每當亮棒移到這個聯絡人時, 右方就會出現快速撥號代碼。記住這個代碼, 日後要打給這位聯絡人時, 只要用 USB 話機撥打這個 1 至 2 位數代碼, 再按「撥號」鍵, 輕輕鬆鬆就可以跟朋友聯絡了!

## 四. 系統定義鍵 代表的意義

當你按下系統定義鍵  時電腦會出現如下的畫面，當您重覆按此定義鍵，會有不同的頁面出現，其操作及意義如下：

圖標	表示意義
	話機與接收器的連線狀況
	電池電量狀況
	線上使用手冊
	線上 FAQ

### 4.1 網址設定頁

您可設定您所喜歡的網站，並快速流覽它。設定方法如下：

- 您可按上下選擇鍵選擇您所要加入的網址順序，並在”名稱”及”網址”欄位分別輸入您想要的網站資料，輸入完成後按”儲存”儲存。
- 例如您可將上下鍵移至 2 這個位置，並在”名稱”欄位輸入”Google”，並在”Website”欄位輸入”www.google.com.tw”，並按”儲存”儲存。如果你想把 Google 這個網站快速叫出，則只需移至”網址”此頁面並按數字 2，即可叫出此網站。



## 4.2 音訊設定頁

您可在此頁進行您的音訊設定：您可按上下選擇鍵或滑鼠點選您要修改的項目。



## 4.3 預設網頁

您會在此頁看見您預設網頁的相關訊息哦!!



## 五. 系統需求

- Win 2000 / Win XP operation system
- 400MHz CPU or above.
- 128MB RAM or above.
- Minimum 15 MB Hard Disk Drive Space.
- Internet connection. (Any broadband connection or 56Kbps dial up modem)

## 六.技資規格

2.4GHz Wireless Skype Phone Specification	
Operation Frequency	2.4GHZ unlicensed ISM Band(2.400~2.4835GHz)
RF Modulation Method	FSK
USB Spec	USB 2.0 Full Speed Operation Compliant
USB Audio	Compliant with USB Audio Specification V1.0
	Plug&Play with standard (build-in) USB Audio Device Driver.
Battery Capacity	600mAh Li-Ion Battery
Standby Time	> 300 Hours
Talking Time	> 5 Hours
Recharge Supply	4.5V to 7V, can use USB Port as recharging power source
Recharge Current	300mA (TYP.)
Recharge Time	<3Hours