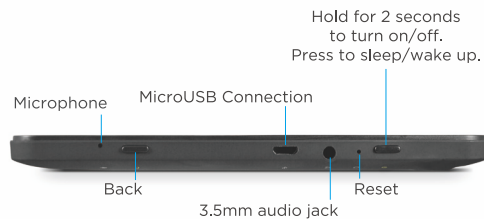
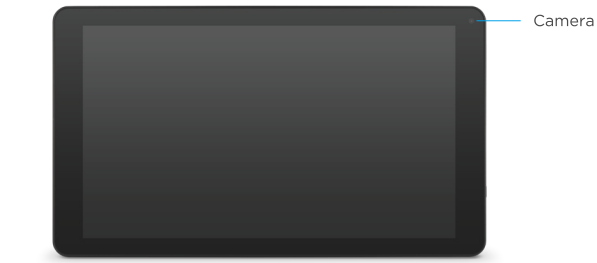


Quick Start Guide



Hold for 2 seconds to turn on/off. Press to sleep/wake up.

Charging

Fully charge your tablet for 6 hours before the first use.



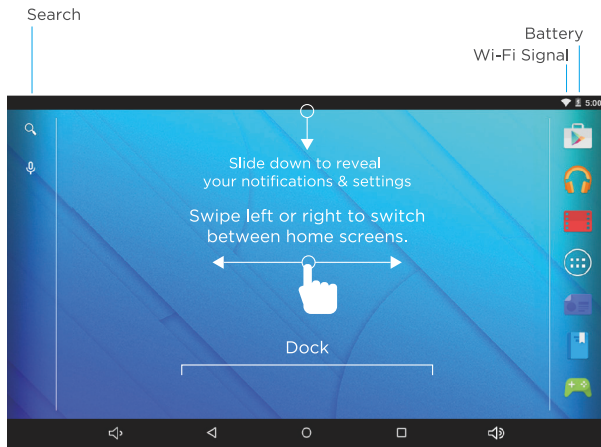
Use the included wall charger.



The battery indicator will show that your device is charging.



Screen Basics



Decrease Volume

Back

Home

Recent Apps

Increase Volume

Hold Home and slide up to access Google Now™.

Connecting to Wi-Fi®



Enter the settings app located in the apps menu. Tap Wi-Fi.



Be sure Wi-Fi is turned on.



Choose your network and enter your password.

Google™ Account

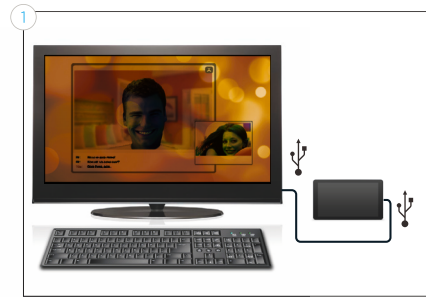
The first time you use the Google Play™ Store app you will be prompted to create a Google account. If you already have a Gmail™ account, you have the option to use your Gmail address and password to sign in. If you do not have a Gmail account, follow the prompts to create an account.

At the end of the setup you will be asked to setup a credit card with Google Wallet™. You can skip this step and enter your information when you want to make a purchase.

Adding Other Accounts

If your primary email account is not gmail you can add your email account to receive. You can also add accounts from other social networking and messaging apps you have installed. Go to Settings and tap Accounts.

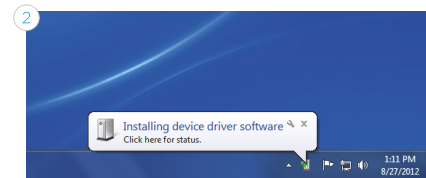
Connecting to a Computer



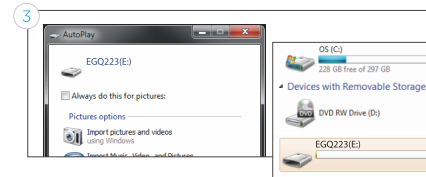
Connect to your computer by USB.



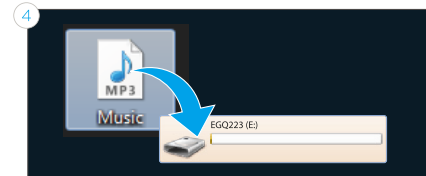
Windows™



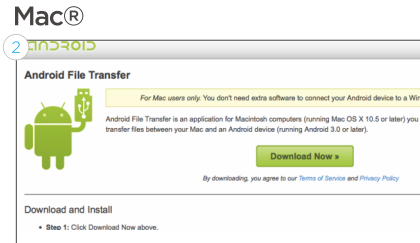
The device driver will install.



Choose open folder to view files or select the removable disk.

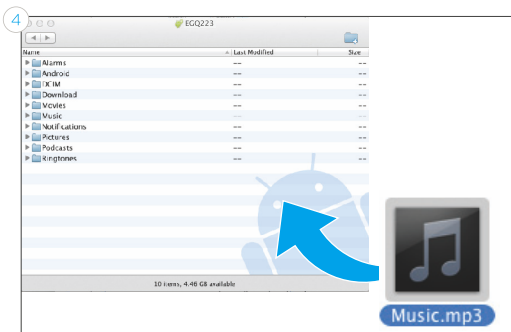


You will now be able to drag and drop files from your computer onto your tablet just as you would with a USB flash drive.



First, install the Android File Transfer application for Mac. Go to android.com/filetransfer on your Mac and choose download now.

3 Install the application.

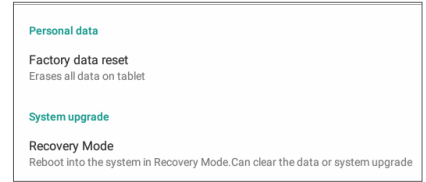


The Android File Transfer application will launch automatically when you connect your tablet. Drag & drop files to transfer.

Reset/Restore



Reset Device
Reset the Device by pressing the reset button with a small object such as a paperclip.



Factory Reset
Select Backup & reset in the settings app to restore factory settings. This will erase all data on the tablet.

Customer Support

Visit ematic.us/support for customer support regarding your device.

To submit a request, fill out the required information online. You will be provided a ticket number regarding your issue, which you can refer to when contacting us further.

FCC Caution:
Any Changes or modifications not expressly approved by the party responsible for compliance could void the user's authority to operate the equipment.

This device complies with part 15 of the FCC Rules. Operation is subject to the following two conditions: (1) This device may not cause harmful interference, and (2) this device must accept any interference received, including interference that may cause undesired operation.
Note: This equipment has been tested and found to comply with the limits for a Class B digital device, pursuant to part 15 of the FCC Rules. These limits are designed to provide reasonable protection against harmful interference in a residential installation. This equipment generates, uses and can radiate radio frequency energy and, if not installed and used in accordance with the instructions, may cause harmful interference to radio communications. However, there is no guarantee that interference will not occur in a particular installation. If this equipment does cause harmful interference to radio or television reception, which can be determined by turning the equipment off and on, the user is encouraged to try to correct the interference by one or more of the following measures:

- Reorient or relocate the receiving antenna.
- Increase the separation between the equipment and receiver.
- Connect the equipment into an outlet on a circuit different from that to which the receiver is connected.
- Consult the dealer or an experienced radio/TV technician for help.

RF Exposure Statement: The equipment complies with FCC radiation exposure limits set forth for an uncontrolled environment. The transmitter must not be co-located or operating in conjunction with any other antenna or transmitter.

IC RSS warning

This device complies with Industry Canada licence-exempt RSS standard (s). Operation is subject to the following two conditions: (1) this device may not cause interference, and (2) this device must accept any interference,including interference that may cause undesired operation of the device.
Le présent areil est conforme aux CNR d'Industrie Canada licables aux areils radio exempts de licence.

L'exploitation est autorisée aux deux conditions suivantes:
(1) l'areil ne doit pas produire de brouillage, et
(2) l'utilisateur de l'appareil doit accepter tout brouillage radioélectrique subi, même si le brouillage est susceptible d'en compromettre le fonctionnement.

Cet appareil est conforme aux limitesd'exposition de rayonnement RF IC établiespour un environnement non contrôlé. Cetémetteur ne doit pas être co-implanté oufonctionner en conjonction avec toute autreantenne ou transmetteur

Any Changes or modifications not expressly approved by the party responsible for compliance could void the user's authority to operate the equipment.