

Fisher-Price®

Bright Expressions™

Car Seat Dashboard

with Remote Control

Model Number 71924



Please save these instructions for future reference.

Batteries must be installed by an adult.

Requires one 9 volt (6LR61) and three "AA" (LR6) alkaline batteries (not included).

Tool required for battery installation: Phillips Screwdriver (not included).

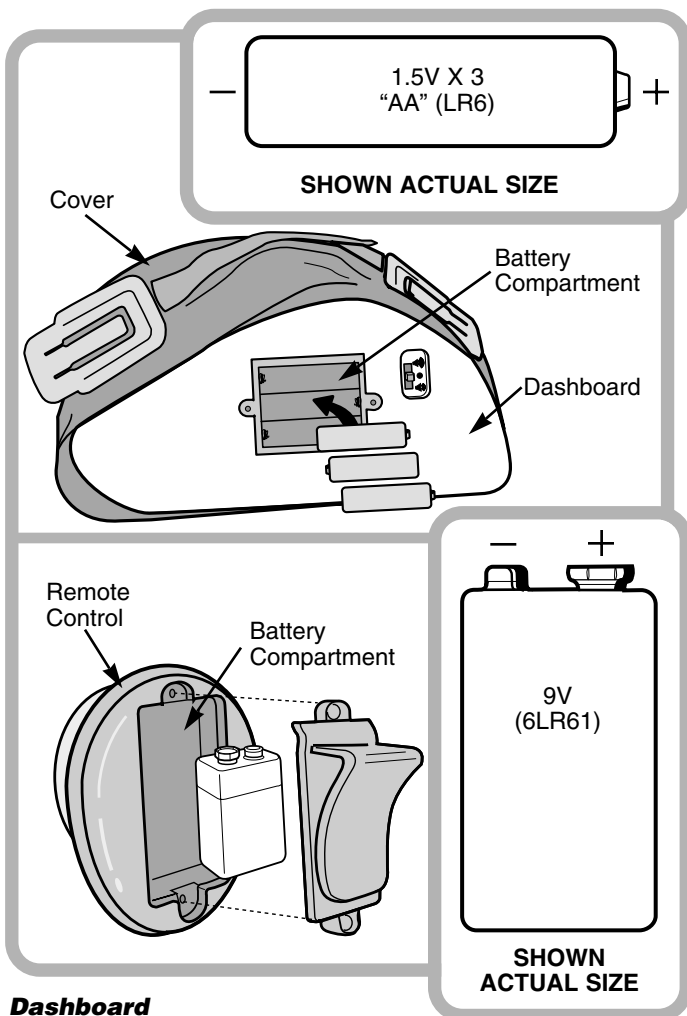
www.fisher-price.com

⚠ WARNING

To prevent strangulation, never place product in a crib or playpen where baby could become entangled. NEVER add strings or ties to the product.

Battery Installation

Hint: We recommend the use of alkaline batteries for longer battery life.



Dashboard

- Turn the dashboard face down. Open the fasteners on the cover to locate the battery compartment on the dashboard.
- Loosen the screws in the battery compartment door with a Phillips screwdriver. Remove the battery compartment door.
- Insert three "AA" (LR6) alkaline batteries as indicated inside the battery compartment.
- Replace the battery compartment door and tighten the screws with a Phillips screwdriver. Do not over-tighten.

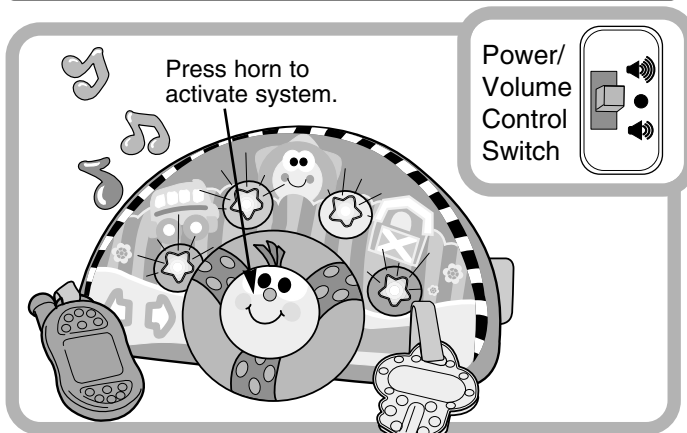
Remote Control

- Loosen the screws in the battery compartment door with a Phillips screwdriver. Remove the battery compartment door.
- Snap the contacts of a 9V (6LR61) alkaline battery to the contacts inside the battery compartment.
- Replace the battery compartment door and tighten the screws with a Phillips screwdriver. Do not over-tighten.

Battery Tips

- Do not mix old and new batteries.
- Do not mix different types of batteries: alkaline, standard (carbon-zinc) or rechargeable (nickel-cadmium).
- Remove the batteries during long periods of non-use. Always remove exhausted batteries from the toy and remote. Battery leakage and corrosion can damage this toy. Dispose of batteries safely.
- Never short circuit the battery terminals.
- Non-rechargeable batteries are not to be recharged.
- Only batteries of the same or equivalent type as recommended in the Battery Installation instructions are to be used.
- If removable rechargeable batteries are used, they are only to be charged under adult supervision.
- Rechargeable batteries are to be removed from the toy before they are charged.
- If you use a battery charger, it should be examined regularly for damage to the cord, plug, enclosure and other parts. Do not use a damaged battery charger until it has been properly repaired.

Set-Up



- Slide the power/volume control switch on to low volume 🔊.
- Press the horn on the dashboard to activate the system. The lights will twinkle. The system will be on for approximately two hours.
- Press the horn again to hear a soothing lullaby or entertaining song. Adjust the volume to a comfortable listening level for your child by either:
 - keeping the switch on low volume 🔊.
 - sliding the switch to high volume 🔊.

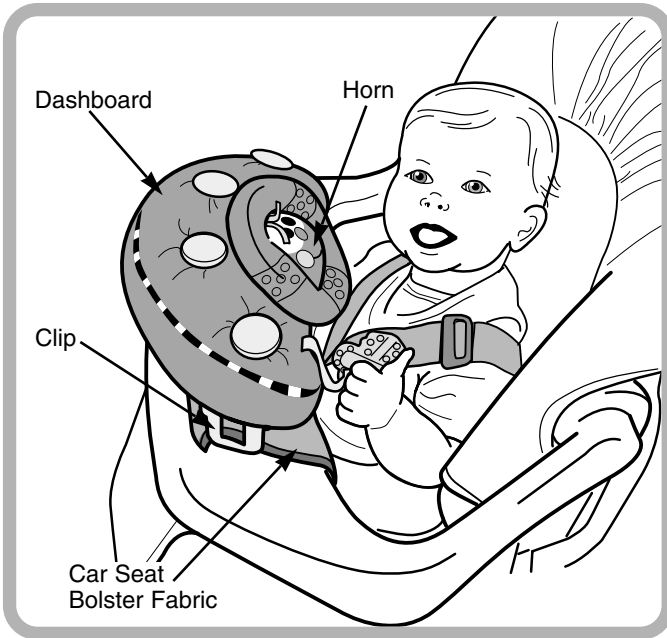
Hint: Although the system is on, unless the toy is playing music or sound effects and lights are twinkling, only a very small amount of power is being used from the batteries.

- Re-fasten the fasteners on the cover.

Attaching the Dashboard to a Car Seat

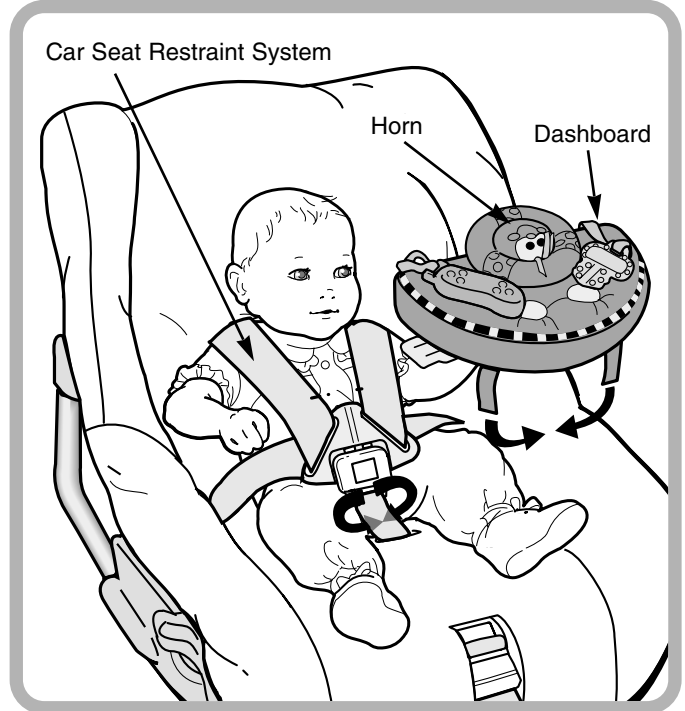
IMPORTANT! This product is designed to attach to most car seats. If, after attaching this product to your car seat you find that you cannot properly tighten your car seat's restraint system (as described in the car seat manufacturer's instructions), **DO NOT** use this product on the car seat.

Car Seat with Bolster



- Position the dashboard upright with the horn facing baby.
- Fasten the clips on the underside of the dashboard to the car seat bolster fabric, as shown.

Car Seat with 3-Point or 5-Point Restraint

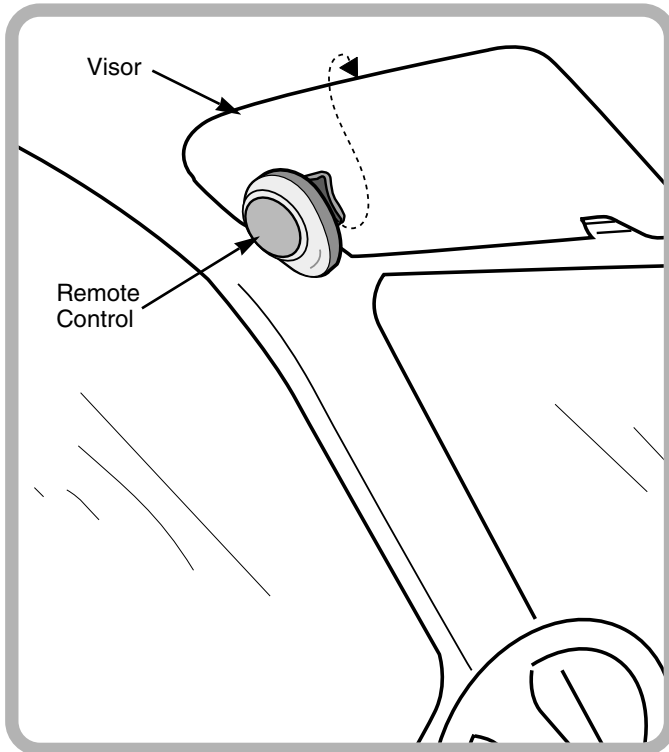


Before attaching the dashboard to your car seat's restraint system, **check to be sure the car seat restraint system is securing your child properly. Check all restraint system belts (shoulder, lap, crotch, etc.) by pulling on them. The straps should not pull more than one inch (two fingers) away from your child.**

- Position the dashboard so that the horn is upright and facing away from baby.
- Wrap the dashboard straps around the crotch strap (of the car seat restraint system) and fasten.



Attaching the Remote Control To a Vehicle Visor



- Attach the remote control clip to the top of the vehicle visor, as shown.

Hint: The remote control does not need to be in direct line with dashboard.

Adult Use with Remote Control



- Press the horn on the dashboard to activate the system. The lights will twinkle.
- Press the remote control button once for soothing lullabies and a light display. Music and lights plays for approximately three minutes.
- To pause lullabies, press the remote control control button again.
- To switch to entertaining songs, press the remote control button a third time. A musical selection and light display plays for approximately three minutes.
- To pause songs, press the remote control button again.
- To replay lullabies, press the remote control button again.

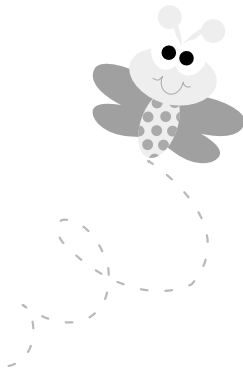
Hint: Each time the remote control button is pressed, the toy will cycle between lullabies - pause - songs - pause, etc.



Child Use with Dashboard Only

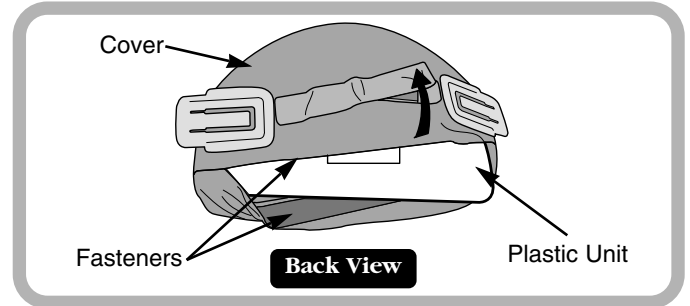


- Press the horn on the dashboard to activate the system. The lights will twinkle.
- When your child presses the horn, you'll hear a sound effect. Then, your child will enjoy one soothing lullaby or entertaining song along with twinkling lights and a sound effect.



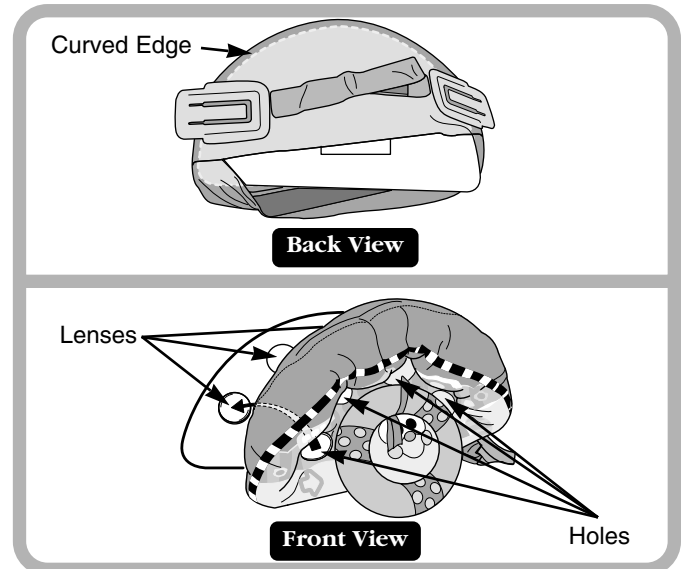
Care

Remove the Plastic Unit for Washing



- Remove the plastic unit before washing the fabric dashboard cover.
 - Unfasten the fasteners on the back of the cover.
 - Remove the plastic unit from the cover.
- Re-fasten the fasteners on the cover before washing. The cover is machine washable. Wash the cover separately in cold water on the gentle cycle. Do not use bleach. Tumble dry on low heat.
- Do not immerse the plastic unit.

Replace the Plastic Unit for Use



- Once cleaned and dried, unfasten the fasteners on the underside of the cover.
- Position the plastic unit so that the curved edge is toward the curved edge of the cover.
- Fit the plastic unit into the cover. Re-fasten the cover fasteners closed.
- Turn the dashboard upright. Fit the four lenses on the plastic unit through the four holes in the cover.

Hints

- If you will not use this toy for an extended period of time, we recommend turning power completely off. Simply slide the power/volume control switch on the back of the dashboard to off ● . Be sure to follow the set-up instructions, and turn power back on for future use.
- If sound or lights become faint or stop, it's time for an adult to replace the batteries!

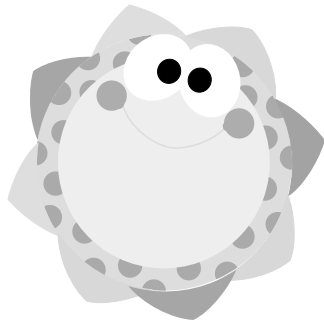
One (1) Year Limited Warranty

Fisher-Price, Inc., 636 Girard Avenue, East Aurora, New York 14052 warrants that Car Seat Dashboard with Remote Control is free from all defects in material and workmanship when used under normal conditions for a period of one (1) year from the date of purchase.

Should the product fail to perform properly, we will repair or replace it at our option, free of charge. Purchaser is responsible for shipping the product to Consumer Affairs at the address indicated above and for all associated freight and insurance cost. Fisher-Price, Inc. will bear the cost of shipping the repaired or replaced item to you. This warranty is void if the owner repairs or modifies the product. This warranty excludes any liability other than that expressly stated above including but not limited to any incidental or consequential damages.

SOME STATES DO NOT ALLOW THE EXCLUSION OR LIMITATION OF INCIDENTAL OR CONSEQUENTIAL DAMAGES, SO THE ABOVE LIMITATION OR EXCLUSION MAY NOT APPLY TO YOU.

THIS WARRANTY GIVES YOU SPECIFIC LEGAL RIGHTS, AND YOU MAY ALSO HAVE OTHER RIGHTS WHICH MAY VARY FROM STATE TO STATE.



If you have any questions about this product:

In Canada, call 1-800-567-7724, or write to: Mattel Canada Inc., 6155 Freemont Blvd., Mississauga, Ontario L5R 3W2.

In Great Britain, telephone 01628 500303.

In Australia, Mattel Australia Pty. Ltd., 658 Church Street, Locked Bag #870, Richmond, Victoria 3121 Australia. Consumer Advisory Service 1-800-800-812 (valid only in Australia).

Fisher-Price Fisher-Price, Inc., a subsidiary of Mattel, Inc.
East Aurora, New York 14052, U.S.A.
©2000 Mattel, Inc. All Rights Reserved.
® and ™ designate U.S. trademarks of Mattel, Inc.

FCC Note (United States Only)

Car Seat Dashboard
Model Number: 71924

This device complies with Part 15 of the FCC Rules. Operation is subject to the following two conditions: (1) This device may not cause harmful interference and (2) this device must accept any interference received, including interference that may cause undesired operation.

Car Seat Dashboard
Consumer Affairs Department
636 Girard Avenue
East Aurora, New York 14052

Note: This equipment has been tested and found to comply with the limits for a Class B digital device, pursuant to Part 15 of the FCC Rules. These limits are designed to provide reasonable protection against harmful interference in a residential installation. This equipment generates, uses and can radiate radio frequency energy and, if not installed and used in accordance with the instructions, may cause harmful interference to radio communications. However, there is no guarantee that interference will not occur in a particular installation. If this equipment does cause harmful interference to radio or television reception, which can be determined by turning the equipment off and on, the user is encouraged to try to correct the interference by one or more of the following measures:

- Reorient or relocate the receiving antenna.
- Increase the separation between the equipment and receiver.
- Consult the dealer or an experienced radio/TV technician for help.

Consumer Information



Questions? We'd like to hear from you!

Call Fisher-Price® Consumer Affairs, toll-free at 1-800-432-KIDS, 8 AM - 5 PM EST Monday through Friday. Hearing-impaired consumers using TTY/TDD equipment, please call 1-800-382-7470. Or, write to: Fisher-Price® Consumer Affairs, 636 Girard Avenue, East Aurora, New York 14052.