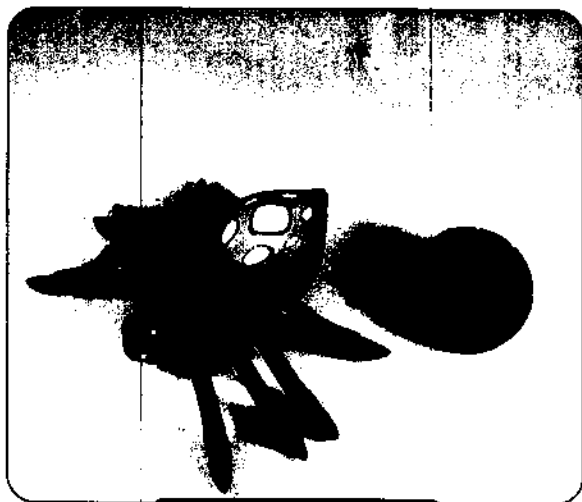


# Fisher-Price®

## Snyder the Spider



Model 78359

## Stryker the Scorpion



Model 78360

Each toy sold separately.

Please keep this instruction sheet for future reference,  
as it contains important information.

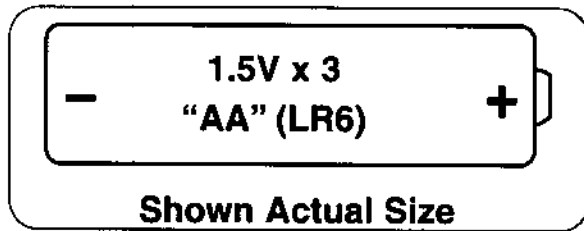
Requires three "AA" (LR6) alkaline batteries in the toy and one 9V  
(6LR61) in the remote for operation.  
(Batteries not included.)

Adult assembly required for battery installation.

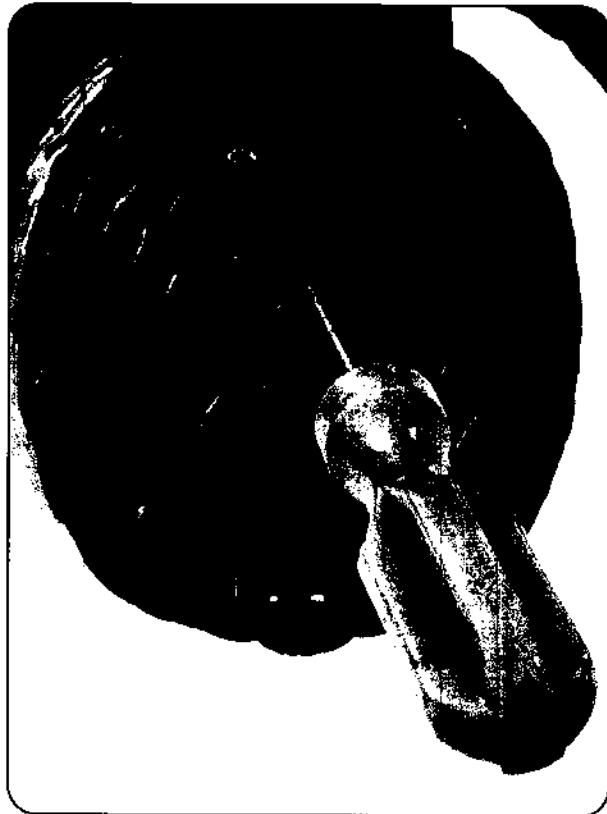
Tool needed for battery installation:  
Phillips screwdriver (not included).

Discover what's possible™...[www.fisher-price.com](http://www.fisher-price.com)

## Toy Battery Installation



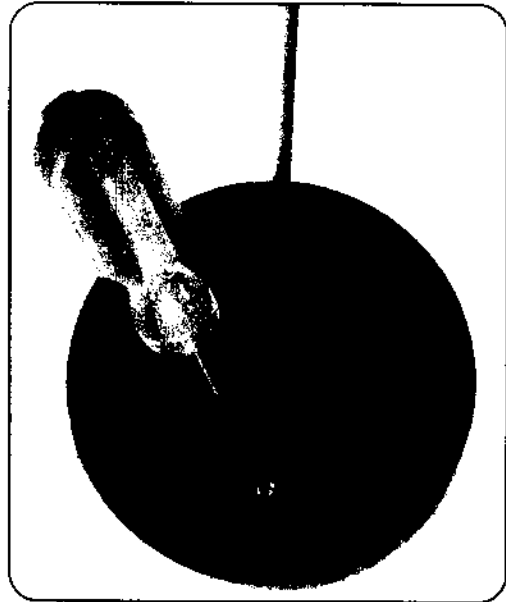
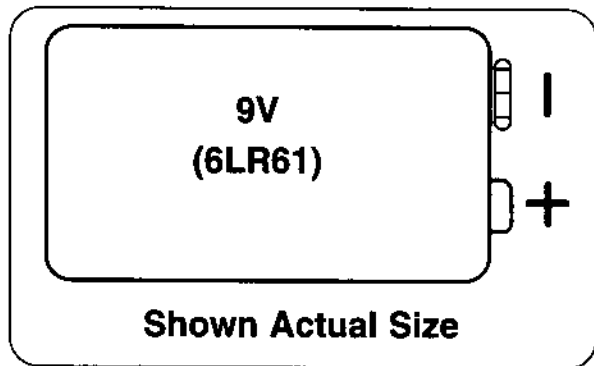
- Locate the battery compartment on the bottom of the toy.
- Loosen the screw in the battery compartment cover using a Phillips screwdriver and lift to remove.
- Insert three "AA" (LR6) **alkaline** batteries as indicated inside the battery compartment.
- Replace the battery compartment cover and tighten the screw using a Phillips screwdriver. Do not over-tighten.



### **Hints:**

- For longer life, use only **alkaline** batteries.
- When this toy stops working, it's time to replace the batteries! Under normal use conditions, the batteries in the toy will require replacement more often than the battery in the remote. When you notice that the toy does not respond to the remote, try replacing the batteries in the toy before replacing the battery in the remote.

## Remote Battery Installation



- Locate the battery compartment on the underside of the remote.
- Loosen the screw in the battery compartment cover using a Phillips screwdriver and lift to remove.
- Insert two "AA" (LR6) **alkaline** batteries as indicated inside the battery compartment.
- Replace the battery compartment cover and tighten the screw using a Phillips screwdriver. Do not over-tighten.

## Battery Tips

- Do not mix old and new batteries.
- Do not mix different types of batteries: alkaline, standard (carbon-zinc) or rechargeable (nickel-cadmium).
- Remove the batteries during long periods of non-use. Always remove exhausted batteries from this toy. Battery leakage and corrosion can cause damage. Dispose of batteries safely.
- Do not dispose of batteries in a fire. The batteries may explode or leak.
- Never short circuit the battery terminals.
- Non-rechargeable batteries are not to be recharged.
- Only batteries of the same or equivalent type as recommended in the "Battery Installation" instructions are to be used.
- If removable rechargeable batteries are used, they are only to be charged under adult supervision.
- Rechargeable batteries are to be removed from the toy before they are charged.
- If you use a battery charger, it should be examined regularly for damage to the cord, plug, enclosure and other parts. Do not use a damaged battery charger until it has been properly repaired.

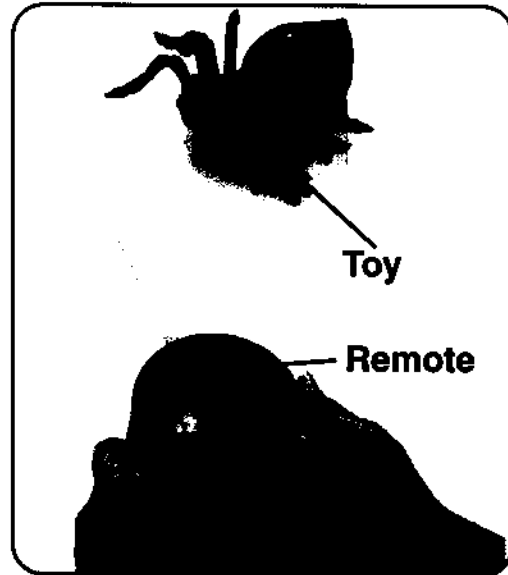
## Let's Go !

### ⚠ CAUTION

To prevent entanglement, keep hair away from wheels.

- Press the power button on the bottom of the toy to turn it on.
- Press the forward or reverse buttons on the remote and the toy moves in that direction.
- Remember to press the power button on the bottom of the toy to turn it off.

*Hint: The toy will automatically turn off (sleep mode) if it is not receive a signal from the remote within a few minutes. To turn the toy back on, simply press the power switch on the bottom of the toy.*



#### Important Notes

- This toy works best on smooth, hard surfaces and operates by infra-red technology. For best performance between the remote and toy, make sure the remote and the toy are in direct line of sight, free of obstacles.
- For best performance, keep the toy within approximately 15 feet of the remote.
- In the unlikely event that use of the remote interferes with normal use of other remote controlled equipment, such as televisions and stereos, or use of other electric or battery powered appliances interfere with operation of the toy, do not use both appliances at the same time.

## Care

- To clean, wipe all parts with a damp cloth. Never immerse the remote or toy.
- Keep water, sand and dirt off of this toy.
- Keep this toy away from direct sunlight and excessive heat.
- Do not drop this toy on a hard surface.
- This product contains no consumer replaceable parts. Do not take this toy apart.

## FCC Note (United States Only)

Note: This equipment has been tested and found to comply with the limits for a Class B digital device, pursuant to Part 15 of the FCC Rules. These limits are designed to provide reasonable protection against harmful interference in a residential installation. This equipment generates, uses and can radiate radio frequency energy and, if not installed and used in accordance with the instructions, may cause harmful interference to radio communications. However, there is no guarantee that interference will not occur in a particular installation. If this equipment does cause harmful interference to radio or television reception, which can be determined by turning the equipment off and on, the user is encouraged to try to correct the interference by one or more of the following measures:

- Reorient or relocate the receiving antenna.
- Increase the separation between the equipment and receiver.
- Consult the dealer or an experienced radio/TV technician for help.

**CAUTION:** Changes or modifications not expressly approved by the manufacturer responsible for compliance could void the user's authority to operate this equipment.

Snyder the Spider

Stryker the Scorpion

Model Numbers: 78359, 78360

This device complies with Part 15 of the FCC Rules. Operation is subject to the following two conditions: (1) This device may not cause harmful interference and (2) this device must accept any interference received, including interference that may cause undesired operation.

Consumer Relations Department  
636 Girard Avenue  
East Aurora, New York 14052

Fisher-Price, Inc., a subsidiary of Mattel, Inc., East Aurora, NY 14052 U.S.A.

©2002 Mattel, Inc. All Rights Reserved. ® and ™ designate

U.S. trademarks of Mattel, Inc.

Printed in China

78359pr-0920