

Fisher-Price®

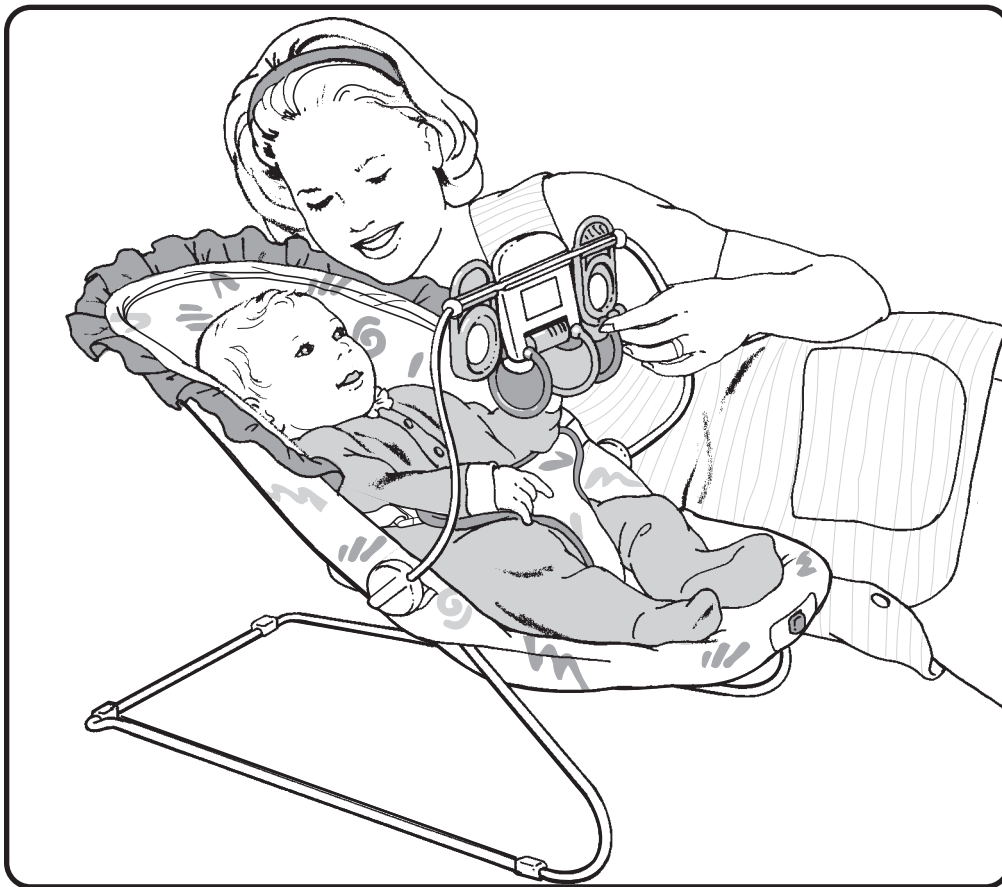
Deluxe Soothing Bouncer Seat

Model Numbers: 79339, 79346, 79380

Please save these instructions for future reference.

Adult assembly is required.

Requires one size "D" (LR20) alkaline battery (not included).

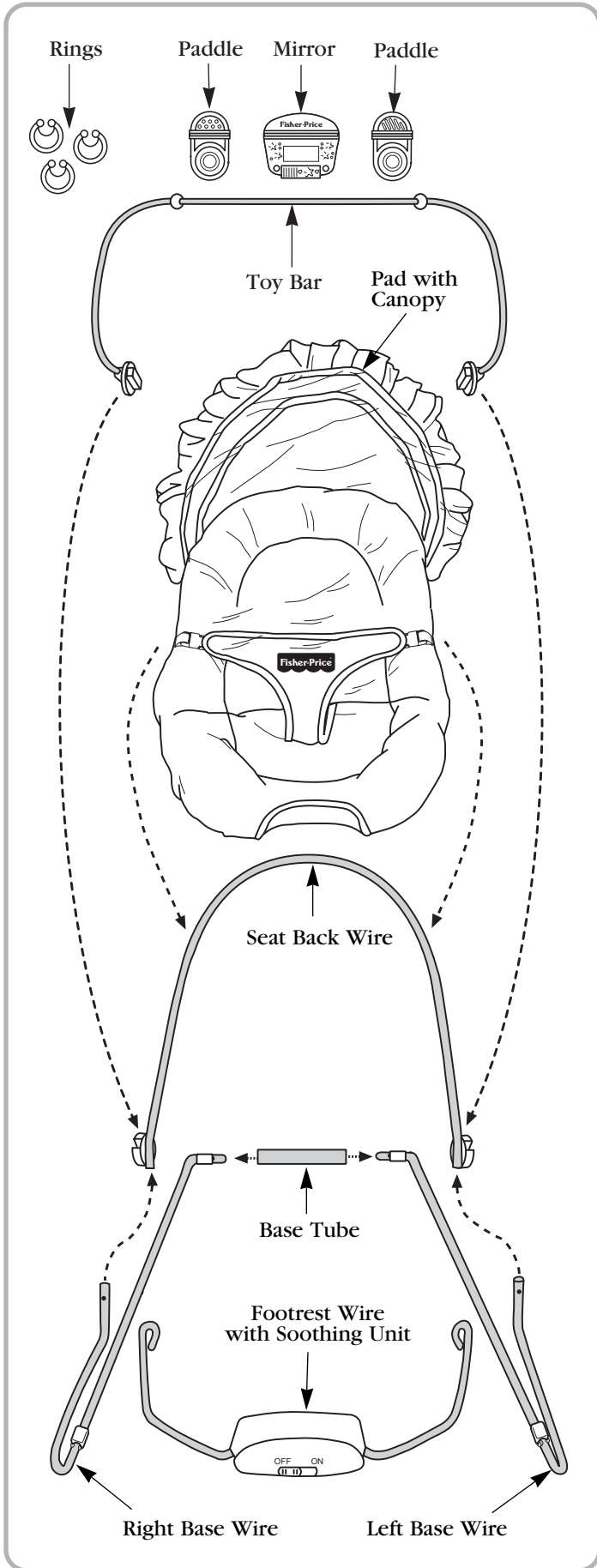


⚠ WARNING

To prevent serious injury and/or falls:

- Never use on any elevated surface.
- Never use as a carrier or lift while child is seated.
- Always use the restraint system.
- Never leave child unattended.
- Never use as a car seat.
- Never use with a child able to sit upright, unassisted.

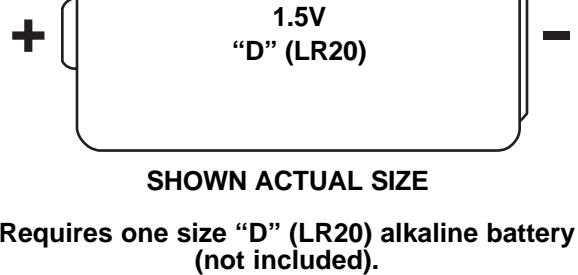
Parts



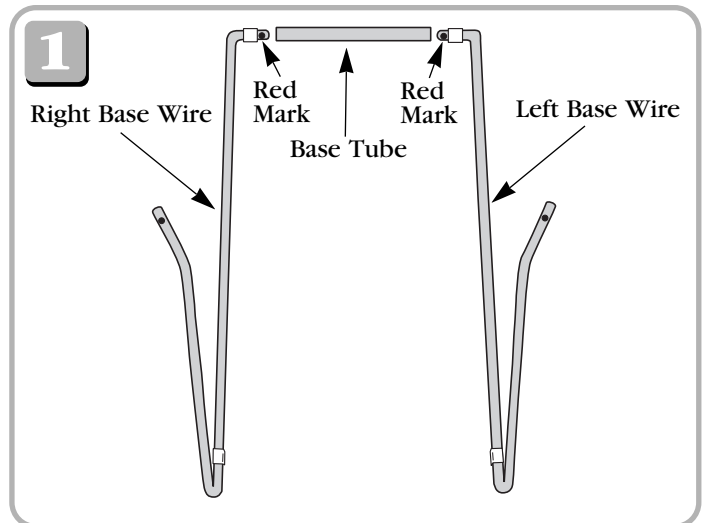
Message to Parents

Thank you for purchasing the Fisher-Price® Deluxe Soothing Bouncer Seat. The Deluxe Soothing Bouncer Seat requires adult assembly. Please read these instructions thoroughly and identify all parts before assembly.

Occasionally a consumer may experience a problem with one of our products. If this should happen please call us, toll-free, rather than return this product to the store. Usually, we can solve the problem over the telephone or send you replacement parts. Please call Fisher-Price® Consumer Affairs, toll-free at **1-800-432-KIDS**, between 8 AM - 5 PM EST, Monday through Friday. Hearing-impaired consumers using TTY/TDD equipment, please call 1-800-382-7470. Or write to: Fisher-Price® Consumer Affairs, 636 Girard Avenue, East Aurora, New York 14052.

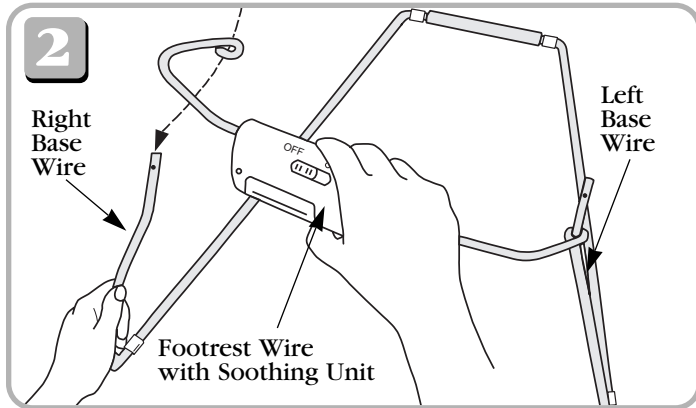


Assembly

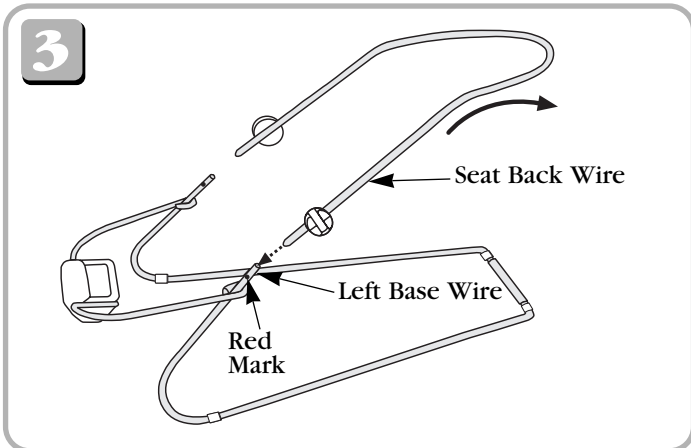


- Place the base tube on a flat surface as shown.
 - Position the left and right base wires as shown.
 - Insert the left base wire into the base tube, until the red mark on the left base wire is covered by the base tube.
 - Insert the right base wire into the base tube, until the red mark on the right base wire is covered by the base tube.

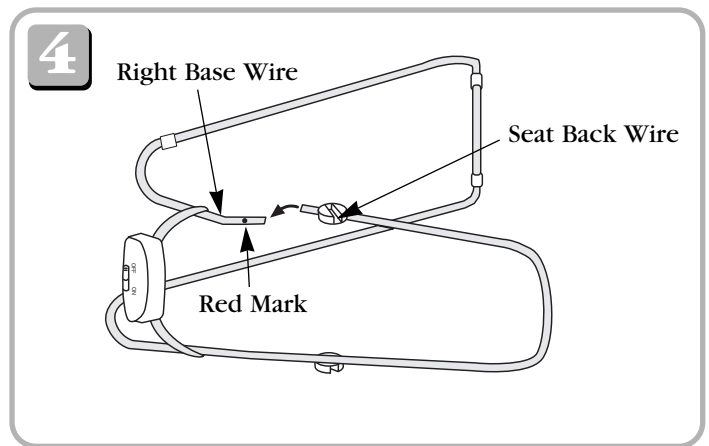
Assembly



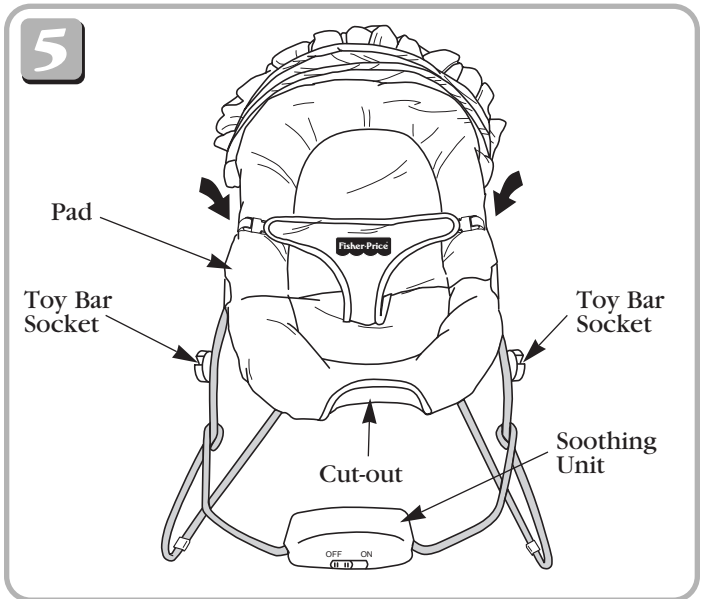
- Position the footrest wire with soothing unit upright.
- Hook the footrest wire with soothing unit onto the ends of the left and right base wires.



- Position the seat back wire above the ends of the left and right base wires as shown. **Make sure the seat back wire bends backward.**
- Fit one end of the seat back wire onto the left base wire, until the red mark on the left base wire is covered by the seat back wire.



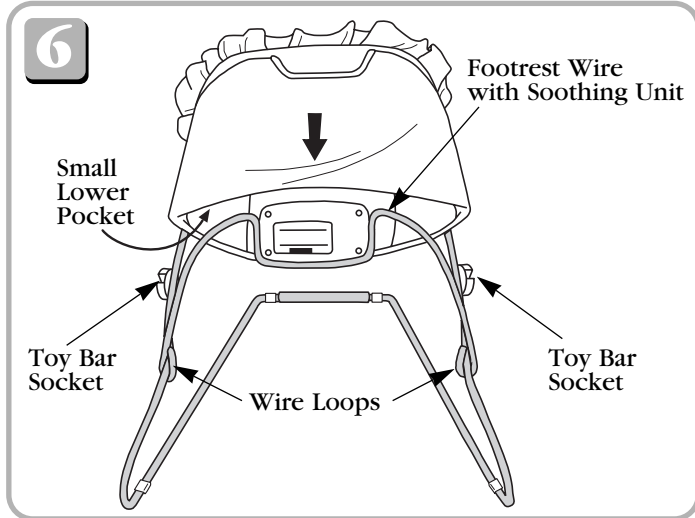
- Turn the Deluxe Soothing Bouncer Seat frame **on its side** with the unconnected seat back and right base wires up, as shown.
- Push down on the unconnected seat back wire and fit it onto the right base wire, until the red mark on the right base wire is covered by the seat back wire.
- Turn the Deluxe Soothing Bouncer Seat frame upright. **Make sure the seat back wire is securely attached to the left and right base wires.**



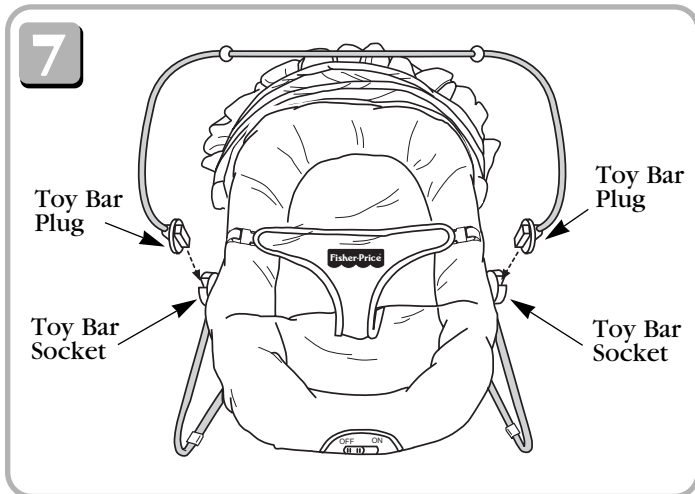
- Position the pad so that the cut-out is toward the soothing unit.
- Locate the large upper pocket on the back of the pad.
- Slide the pad pocket over the seat back wire. **Do not fit the pad over the toy bar sockets.**

Helpful Hint: Before assembling the lower portion of the pad to the footrest wire with soothing unit, you may want to install the battery in the soothing unit. Please see the next section (page 5, Battery Installation) for instructions.

Assembly

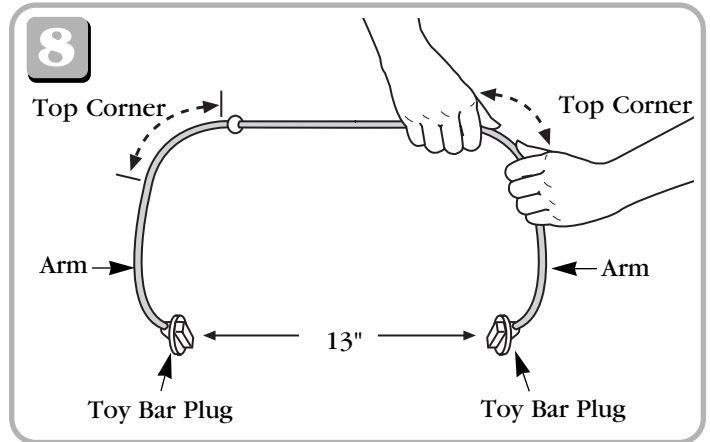


- Lift the front of the pad to locate the small lower pocket.
- Lift the footrest wire with soothing unit.
- Fit the pad pocket over the footrest wire with soothing unit.
- Fit the small openings on each side of the pad over the toy bar sockets.
- Lower the footrest wire with soothing unit.

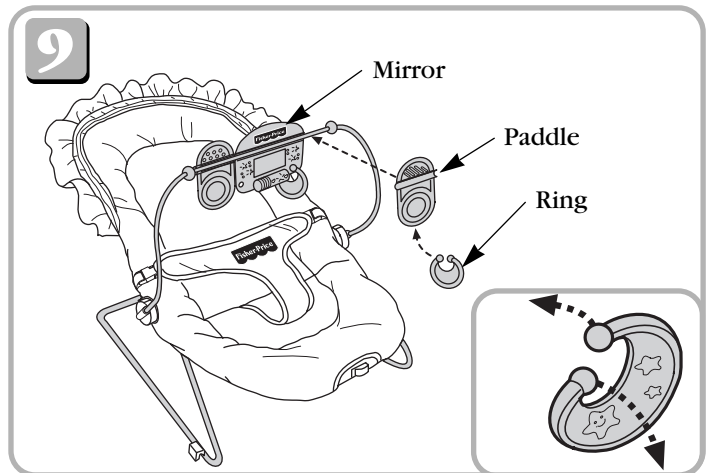


- Spread the toy bar ends outward to fit the plugs into the toy bar sockets.

Helpful Hint: The toy bar plugs are different sizes and must be inserted into the proper toy bar socket. If the toy bar plugs do not fit, turn the toy bar around.



- Periodically check to be sure the toy bar plugs are approximately 13 inches apart. After several attachments the toy bar plugs may spread further apart.
- If the toy bar plugs spread apart more than 13 inches, grasp the toy bar with both hands near one of the top corners. Bend the arm inward slightly.
- Grasp the toy bar with both hands near the other top corner. Bend the arm inward slightly.
- Measure the distance between the toy bar plugs to see if it is approximately 13 inches. If it is shorter or longer, adjust the toy bar until the toy bar plugs are approximately 13 inches apart.



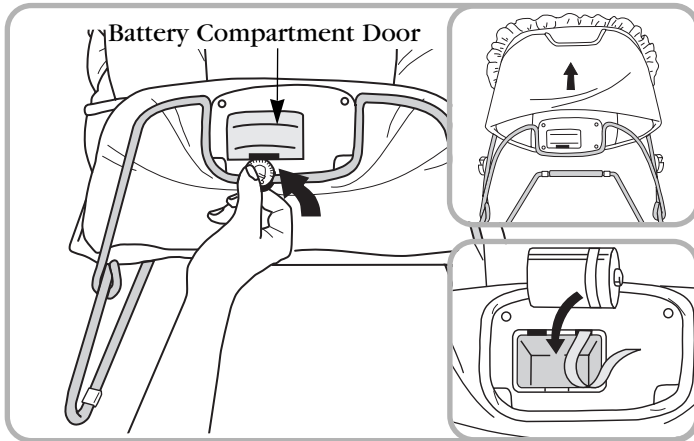
- Snap the mirror and the paddles to the toy bar.
- The rings can be attached to the mirror and one of the paddles, as shown.

Helpful Hint: Twist the ends of the rings apart to attach them to the mirror or paddle.

- The toy bar is removable. Simply pull out near each toy bar plug to remove the toy bar.

Assembly is now complete.

Battery Installation



- Lift the footrest wire. Remove the pad from the footrest wire with soothing unit.
- Insert a coin into the the battery compartment door and pry the battery compartment door open.
- Insert one size “D” (LR20) alkaline battery, as indicated inside the battery compartment. Be sure to place the battery on top of the ribbon.

Hint: For easy battery removal, simply lift the ribbon.

- Replace the battery compartment door and be sure it snaps securely closed.
- Fit the pad onto the footrest wire with soothing unit.
- Lower the footrest wire with soothing unit.

Please Note:

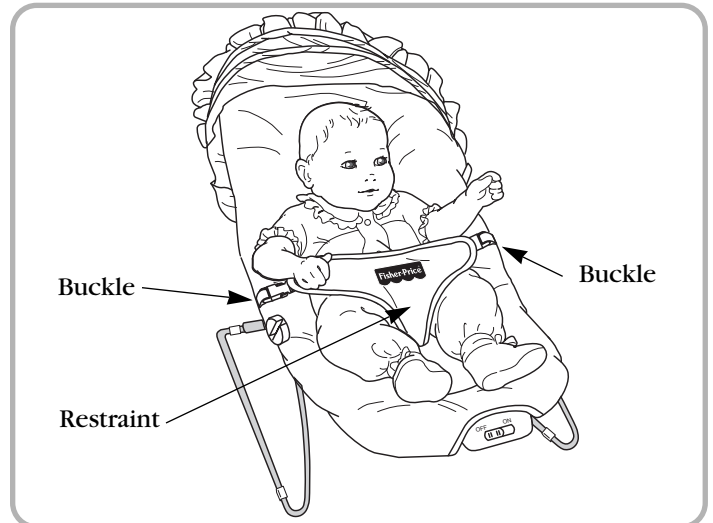
- Remove the battery during long periods of non-use. Never leave a worn out battery in the Deluxe Soothing Bouncer Seat. Battery leakage and corrosion can damage this product. Dispose of the battery safely.
- Do not attempt to recharge a non-rechargeable battery.
- Remove a rechargeable battery from the Deluxe Soothing Bouncer Seat before recharging.
- Charging of a rechargeable battery should only be done under adult supervision.
- Avoid short-circuiting the terminals of the battery.
- Remove the exhausted battery from the Deluxe Soothing Bouncer Seat.

Securing Your Child

⚠ WARNING

To prevent serious injury and/or falls:

- Always use the restraint system.
- Never use with a child able to sit upright, unassisted.



- If the toy bar is attached, remove it before placing your child in the Deluxe Soothing Bouncer Seat.
- Place your child in the Deluxe Soothing Bouncer Seat. Position the restraint between your child's legs.
- Fasten both belts to the buckles on each side of the restraint. **Make sure you hear a “click” on both sides.**
- Make sure the restraint is securely attached by pulling it away from your child. The restraint should remain attached.
- Attach the toy bar, if desired (see steps **7** - **9**).

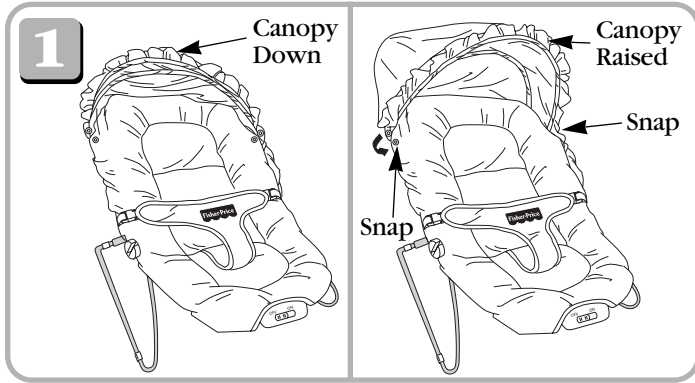
Use

⚠ WARNING

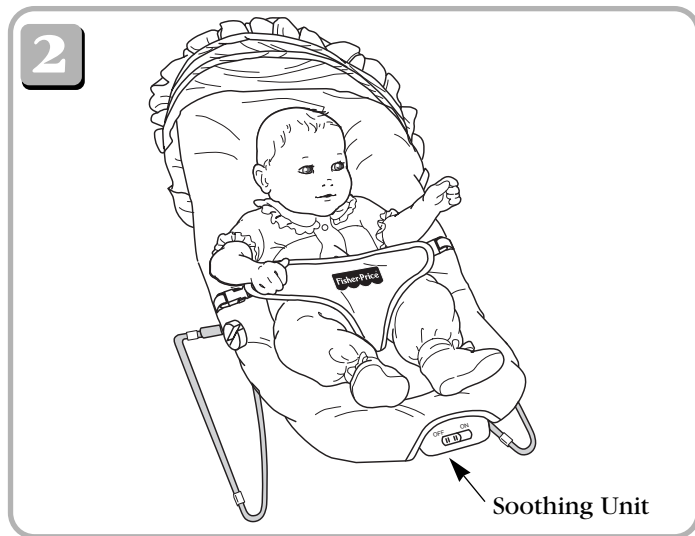
To prevent serious injury and/or falls:

- Never use on any elevated surface.
- Never use as a carrier or lift while child is seated.
- Never leave a child unattended.
- Never use as a car seat.

Use



- The canopy can be adjusted down or up.
- Fasten the snap on each side of the canopy when using the canopy in the raised position.



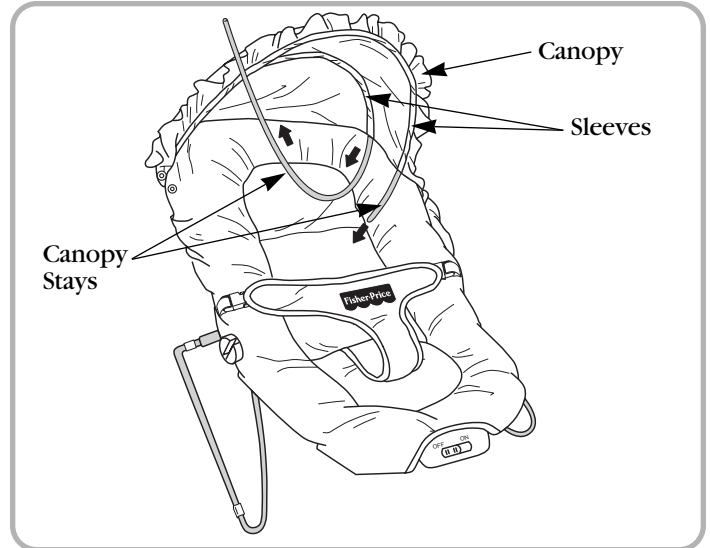
- Make sure your child is properly secured in the Deluxe Soothing Bouncer Seat.
- Slide the ON/OFF switch on the soothing unit to the "ON" position. The seat will vibrate.
- Slide the ON/OFF switch on the soothing unit to the "OFF" position. The seat will not vibrate.

Storage

- Remove the toy bar from the seat back wire.
- Lift the footrest wire with soothing unit and remove the pad lower pocket.
- Slide the pad upper pocket off the seat back frame.
- Remove the seat back wire from the left and right base wires.
- Remove the footrest wire with soothing unit from the left and right base wires.
- Remove the battery from the soothing unit.
- Remove the left and right base wires from the base tube.
- Store all parts in a safe place for future use.

Care

The pad is machine washable. Wash the pad separately in cold water on the gentle cycle. Do not use bleach. Tumble dry separately on low heat and remove promptly. The wire frame, toy bar, mirror, paddles and rings may be wiped clean using a mild cleaning solution and a damp cloth.



To remove the pad:

- Lift the footrest wire with soothing unit and remove the pad lower pocket.
- Slide the pad upper pocket off of the seat back frame.
- Remove both canopy stays from the canopy sleeves.

To re-assemble the pad:

- Refer to assembly steps **5** and **6**.

One Year Limited Warranty

Fisher-Price, Inc., 636 Girard Avenue, East Aurora, New York 14052, warrants that the Deluxe Soothing Bouncer Seat is free from all defects in material and workmanship when used under normal conditions for a period of one (1) year from the date of purchase.

Should the product fail to perform properly, we will repair or replace it at our option, free of charge. Purchaser is responsible for shipping the product to Fisher-Price Consumer Affairs at the address indicated above and for all associated freight and insurance cost. Fisher-Price, Inc. will bear the cost of shipping the repaired or replaced item to you. This warranty is void if the owner repairs or modifies the product. This warranty excludes any liability other than that expressly stated above including but not limited to any incidental or consequential damages.

SOME STATES DO NOT ALLOW THE EXCLUSION OR LIMITATION OF INCIDENTAL OR CONSEQUENTIAL DAMAGES, SO THE ABOVE LIMITATION OR EXCLUSION MAY NOT APPLY TO YOU.

THIS WARRANTY GIVES YOU SPECIFIC LEGAL RIGHTS, AND YOU MAY ALSO HAVE OTHER RIGHTS WHICH MAY VARY FROM STATE TO STATE.

If you have any questions about this product:

In Canada, call 1-800-567-7724, or write to: Mattel Canada Inc., 6155 Freemont Blvd., Mississauga, Ontario L5R 3W2. In Great Britain, telephone 01628 500303. In Australia, call the Australian Consumer Advisory Service toll-free at 1-800-800-812, or write to: Mattel Pty. Ltd., 658 Church Street, Locked Bag #870, Richmond, Victoria, 3121 Australia.