

Learn Through Music Plus!

INSTRUCTION SHEET

Please keep these instructions for future reference as they contain important information.

Thank you for purchasing the **Learn Through Music Plus!** system. The **Learn Through Music Plus!** interactive early learning system helps teach preschoolers fundamental lessons through the magic of music. The rhythm, rhyme and repetition of musical sounds and lyrics are time-honored and time-tested tools that capture children's attention and imagination and help them to absorb and remember basic concepts. Because music engages a child's entire self - mind, body and soul - putting lessons to music makes it fun and easy for children to retain new information.

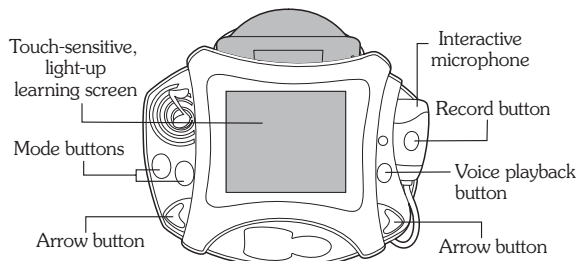
Each **Learn Through Music Plus!** cartridge features:

- Specific, age-appropriate learning lessons
- A wide range of lyrical & rhythmic activities
- A variety of visual & audio content
- Diverse curriculums based on beloved characters

WHAT'S INCLUDED

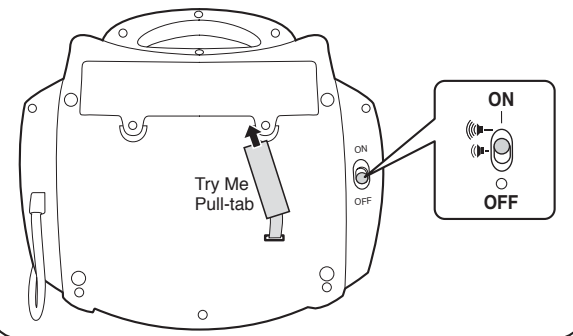
Your **Learn Through Music Plus!** system consists of two main components:

1. The main learning unit, which includes:
 - Touch-sensitive, light-up learning screen
 - Voice playback button
 - 2 arrow buttons
 - 2 mode buttons (music note and question mark)
 - Interactive microphone
2. 1 **Learn Through Music Plus!** cartridge



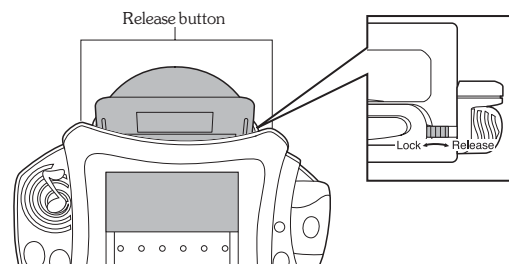
BEFORE YOU BEGIN

- Please remove and discard the "Try Me" pull-tab from the back of the main learning unit.
- An **ON/OFF/VOLUME** switch is located on the back of the main learning unit. Be sure the switch is in either the **LOW VOLUME** or **HIGH VOLUME** position.



HOW TO PLAY

- Insert the cartridge into the main unit as shown. Be sure you hear the cartridge "click" into place before you begin play.
- Press any button or touch the screen to begin play.
- Each software cartridge consists of several different play screens.
- Each play-screen has two modes of play:
 - Music/Identify Mode** - press the **MUSIC NOTE** button to replay the music that you heard when you arrived at the first play screen. Touch the images on the screen to identify what they are.
 - Question Mode** - press the **QUESTION MARK** button to hear and repeat questions.
- Press the arrow buttons to advance to the next screen or rewind to the previous screen.
- At any time you can press the button on the microphone to sing along and record your voice. **Press and hold the voice playback button to hear what you've recorded.**
- To remove or replace the learning cartridge, simply push the two slide buttons located on the sides of the cartridge outward to release the cartridge.



H7732

Fisher-Price

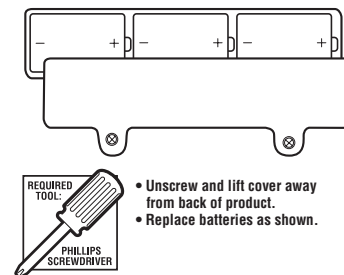
TO PLAY AGAIN

To play again, press the right arrow button while on the last screen and the cartridge will rewind back to the beginning. Then press the screen or any button to start a new game. If you rewind to the first screen at any time during play, the game will reset. Look for other cartridges also available for use with the **Learn Through Music Plus!** system.

TOY SLEEP MODE

- If the toy is not played with for more than 10 seconds it will prompt the child to continue playing.
- If after another 10 seconds the child does not play with the toy, it will automatically shut-off to preserve battery life.
- Press any button or touch the screen to resume play.

BATTERY REPLACEMENT



BATTERY SAFETY INFORMATION

In exceptional circumstances batteries may leak fluids that can cause a chemical burn injury or ruin your toy (product). To avoid battery leakage:

- Non-rechargeable batteries are not to be recharged.
- Rechargeable batteries are to be removed from the product before being charged (if designed to be removable).
- Rechargeable batteries are only to be charged under adult supervision (if designed to be removable).
- Do not mix alkaline, standard (carbon-zinc), or rechargeable (nickel-cadmium) batteries.
- Do not mix old and new batteries.

- Only batteries of the same or equivalent type as recommended are to be used.
- Batteries are to be inserted with the correct polarity.
- Exhausted batteries are to be removed from the product.
- The supply terminals are not to be short-circuited.
- Dispose of battery(ies) safely.
- Do not dispose of this product in a fire. The batteries inside may explode or leak.

Batteries included are for demonstration purposes only. For longer life use only alkaline batteries. Requires 3 "C" (LR14) batteries.

This equipment has been tested and found to comply with the limits for a Class B digital device, pursuant to part 15 of the FCC rules. These limits are designed to provide reasonable protection against harmful interference in a residential installation. This equipment generates, uses and can radiate radio frequency energy and, if not installed and used in accordance with the instructions, may cause harmful interference to radio communications. However, there is no guarantee that interference will not occur in a particular installation. If this equipment does cause harmful interference to radio or television reception, which can be determined by turning the equipment off and on, the user is encouraged to try to correct the interference by one or more of the following measures:

Reorient or relocate the receiving antenna.

Increase the separation between the equipment and receiver.

Connect the equipment into an outlet on a circuit different from that to which the receiver is connected.

Consult the dealer or an experienced radio/TV technician for help.

Mattel Inc. 333 Continental Blvd. El Segundo, CA (310) 252-2400

NOTE: Changes or modifications not expressly approved by the manufacturer responsible for compliance could void the user's authority to operate the equipment.

Fisher-Price, Inc., a subsidiary of Mattel, Inc., East Aurora, NY 14052 U.S.A.

PRINTED IN CHINA.

Manufactured for Fisher-Price. ©2005 Mattel, Inc. All Rights Reserved.

Fisher-Price and the Fisher-Price logo are U.S. trademarks of Mattel, Inc.

Packaging and address should be retained for future reference.

Mattel Canada Inc., Mississauga, Ontario L5R 3W2. You may call us free at 1-800-432-5437.

Mattel U.K. Ltd., Vanwall Business Park, Maidenhead SL6 4UB. Helpline 01628500303.

Mattel Australia Pty., Ltd., Richmond, Victoria. 3121. Consumer Advisory Service - 1300 135 312.

Mattel East Asia Ltd., Room 1106, South Tower, World Finance Centre, Harbour City, Tsimshatsui, HK, China.

Diimport & Diedarkan Oleh: Mattel SEA Ptd Ltd.(993532-P) Lot 13.5, 13th Floor, Menara Lien Hoe,

Persiaran Tropicana Golf Country Resort, 47410 P.J. Tel:03-78803817, Fax:03-78803867.

Mattel, Inc., 333 Continental Blvd., El Segundo, CA 90245 U.S.A. Consumer Affairs 1 (800) 524-Toys.

Questions?
service.fisher-price.com
In US and Canada
1-800-432-5437

H7732
Fisher-Price

Item No : H7732-G1
Version : English
Size : 8.5 x 11" double face
Paper : Woodfree paper 80 gsm
Color : Black
Date : June, 3 2005

H7732-0920