

NIGHT PATROL™

ELECTRONIC

RESCUE
HEROES

Model Number L5111



Please keep this instruction sheet for future reference,
as it contains important information.

Requires three (LR44) **alkaline** button cell batteries (included).

Adult assembly is required.

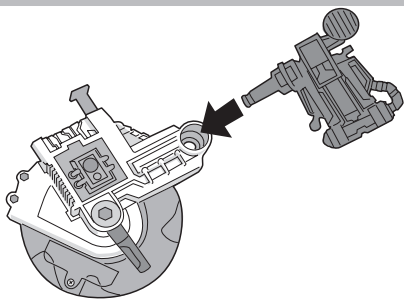
Tool needed for battery replacement:

Phillips screwdriver (not included).

Fisher-Price®

www.rescueheroes.com

ASSEMBLY



- **"Snap"** the peg on the backpack into the socket in the tool arm.

LIGHTING THE WAY TO RESCUE!



- Press the plunger on tool arm to see the saw spin and glow!

NOTES

- The glow-in-the-dark feature will last longer if you do not expose this toy to intense heat or direct sunlight for prolonged periods of time.
- Place the figure approximately five feet (1.5 m) away from a light source for 30 seconds. Placing the figure closer will not intensify the glow-in-the-dark feature.

CARE

- Wipe the toy with a clean cloth dampened with a mild soap and water solution.
- Do not immerse the toy.

CONSUMER INFORMATION

Visit us on line at www.service.fisher-price.com

Call Fisher-Price® Consumer Relations, toll-free at **1-800-432-5437**,
9 AM - 7 PM EST Monday through Friday and 11 AM - 5 PM EST
Saturday. Hearing-impaired consumers using TTY/TDD equipment,
please call 1-800-382-7470.

Write to us at: Fisher-Price® Consumer Relations, 636 Girard Avenue,
East Aurora, New York 14052.

For countries outside the United States:

CANADA: Questions? 1-800-432-5437. Mattel Canada Inc., 6155 Freemont Blvd., Mississauga,
Ontario L5R 3W2; www.service.mattel.com.

GREAT BRITAIN: Mattel UK Ltd, Vanwall Business Park, Maidenhead SL6 4UB. Helpline: 01628 500302.
www.service.mattel.com

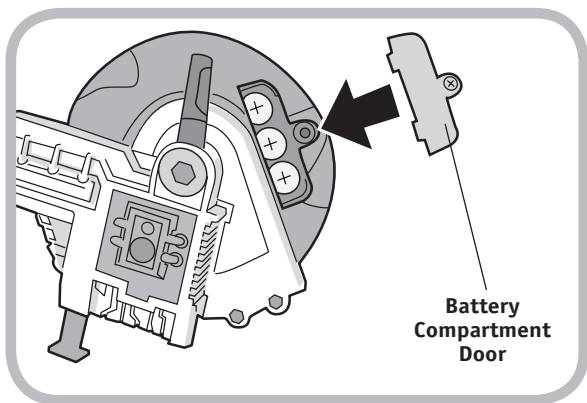
AUSTRALIA: Mattel Australia Pty. Ltd., 658 Church Street, Locked Bag #870, Richmond,
Victoria 3121 Australia. Consumer Advisory Service 1300 135 312.

NEW ZEALAND: 16-18 William Pickering Drive, Albany 1331, Auckland.

ASIA: Mattel East Asia Ltd, Room 1106, South Tower, World Finance Centre, Harbour City, Tsimshatsui,
HK, China.

©2006 Mattel, Inc. All Rights Reserved. ® and ™ designate U.S. trademarks of Mattel, Inc.
Fisher-Price, Inc., a subsidiary of Mattel, Inc. East Aurora, New York 14052, U.S.A.

BATTERY REPLACEMENT



- Locate the battery compartment door on the tool arm.
- Loosen the screw in the battery compartment door with a Phillips screwdriver. Remove the battery compartment door. Remove and throw away the exhausted batteries.
- Insert three, new, button cell (LR44) **alkaline** batteries.

Hint: We recommend using **alkaline** batteries for longer battery life.

- Replace the battery compartment door and tighten the screw with a Phillips screwdriver. Do not over-tighten.
- When lights or motions become faint or stop, it's time for an adult to change the batteries!



- Protect the environment by not disposing of this product with household waste (2002/96/EC). Check your local authority for recycling advice and facilities (Europe only).

BATTERY SAFETY INFORMATION

For best results, use only alkaline batteries.



1.5V x 3
LR44 or Equivalent

In exceptional circumstances, batteries may leak fluids that can cause a chemical burn injury or ruin your toy. To avoid battery leakage:

- Do not mix old and new batteries or batteries of different types: alkaline, standard (carbon-zinc) or rechargeable (nickel-cadmium).
- Insert batteries as indicated on the battery compartment door.
- Remove batteries during long periods of non-use. Always remove exhausted batteries from the toy. Dispose of batteries safely. Do not dispose of the toy in a fire. The batteries inside may explode or leak.
- Never short-circuit the battery terminals.
- Use only batteries of the same or equivalent type as recommended.
- Do not charge non-rechargeable batteries.
- Remove rechargeable batteries from the toy before charging.
- If removeable, rechargeable batteries are used, they are only to be charged under adult supervision.

RECYCLE INFORMATION (U.S.A. ONLY)

- If your product contains replaceable button cell batteries, please remove and recycle the battery(ies). If the batteries in your product are not replaceable, please recycle your product.
- Visit your nearest recycling center. For the location of the nearest recycling center, visit us online at **www.service.mattel.com**.
- If a recycling center is not available in your area, contact us for a pre-paid mailing label. Visit us online at **www.service.mattel.com** or call us toll-free, **1-800-432-5437**.

FCC STATEMENT

United States Only

This equipment has been tested and found to comply with the limits for a Class B digital device, pursuant to Part 15 of the FCC Rules. These limits are designed to provide reasonable protection against harmful interference in a residential installation. This equipment generates, uses and can radiate radio frequency energy and, if not installed and used in accordance with the instructions, may cause harmful interference to radio communications. However, there is no guarantee that interference will not occur in a particular installation. If this equipment does cause harmful interference to radio or television reception, which can be determined by turning the equipment off and on, the user is encouraged to try to correct the interference by one or more of the following measures:

- Reorient or relocate the receiving antenna.
- Increase the separation between the equipment and receiver.
- Consult the dealer or an experienced radio/TV technician for help.

Note: Changes or modifications not expressly approved by the manufacturer responsible for compliance could void the user's authority to operate the equipment.