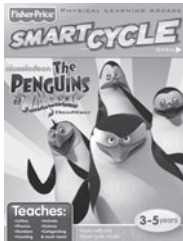
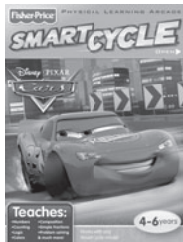



Stretch your mind with
other software titles for your Smart Cycle®!

Each sold separately and subject to availability.



© 2010 Viacom International Inc. All Rights Reserved. Nickelodeon, SpongeBob SquarePants and all related titles, logos and characters are trademarks of Viacom International Inc. Created by Stephen Hillenburg.

© 2010 Viacom International Inc. Madagascar® DWA L.L.C. All Rights Reserved.

 DC SUPER FRIENDS and all related characters and elements are trademarks of and © DC Comics.

 WB SHIELD: TM & © Warner Bros. Entertainment Inc. (S10)

Disney • Pixar elements © 2010 Disney • Pixar

Shrek Forever After™ & © 2010 DreamWorks Animation L.L.C.

Fisher-Price, Inc., a subsidiary of Mattel, Inc., East Aurora, NY 14052 U.S.A. ©2010 Mattel, Inc. All Rights Reserved. ® and™ designate U.S. trademarks of Mattel, Inc., unless otherwise indicated.

www.fisher-price.com

Fisher-Price®

T6356

SMART CYCLE
RACER

PHYSICAL LEARNING ARCADE SYSTEM



NOTICE ABOUT EPILEPSY AND SEIZURES

PLEASE READ THIS NOTICE BEFORE YOU OR YOUR CHILD USE ANY VIDEO GAME.

A very small portion of the population have a condition which may cause a momentary loss of consciousness when viewing certain kinds of flashing lights or patterns that are commonly present in our daily environment. This condition may cause seizures while watching some kinds of television pictures or playing certain video games. Players who have not had any previous seizures may nonetheless have an undetected epileptic condition.

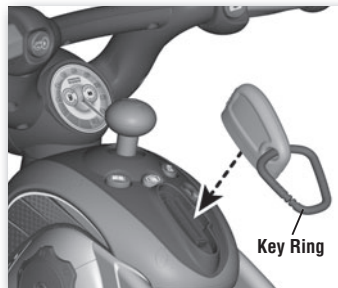
If you or anyone in your family has experienced symptoms linked to an epileptic condition (e.g. a seizure or loss of awareness), consult your physician before playing video games. We recommend that parents observe their children while they play video games. If you or your child experience any of the following symptoms such as dizziness, altered vision, eye or muscle twitching, involuntary movements, loss of awareness, disorientation or convulsions, **DISCONTINUE USE IMMEDIATELY** and consult your physician.

Additionally, please follow these precautions whenever playing a video game:

- Do not sit or stand too close to the television screen. Play as far back from the screen as possible.
- Do not play if you are tired or need sleep.
- Always play in a well lit room.
- Be sure to take a 10-15 minute break every hour while playing.

GETTING STARTED

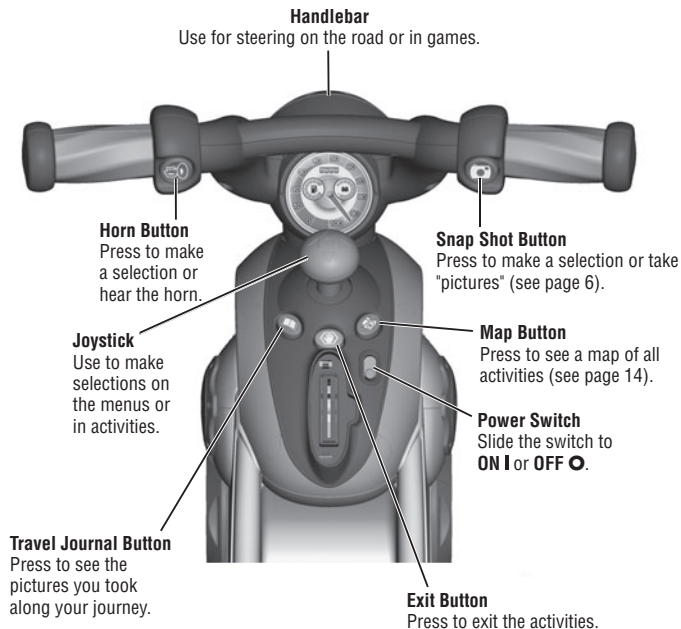
- Please keep this instruction sheet for future reference, as it contains important information.



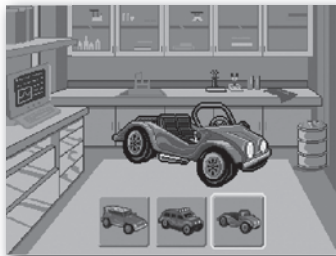
- Insert the game cartridge into the socket on top of the cycle. Push to be sure it's fully inserted.
- Turn your TV or VCR/DVD player power **ON**.
- Slide the power switch on the cycle to **ON I**.
- To find the picture on your TV screen, set your TV's or VCR/DVD player's mode selector to INPUT or VIDEO IN.

Note: You can use this Smart Cycle® software with any Smart Cycle® model.

CYCLE CONTROLS



CUSTOMIZE YOUR VEHICLE



- Use the joystick to choose the type of vehicle you'd like to "drive."
- Press either handlebar button to make your selection.
- Repeat this process to choose the color and horn sound for your vehicle.



DISCOVER THE DINOSAURS



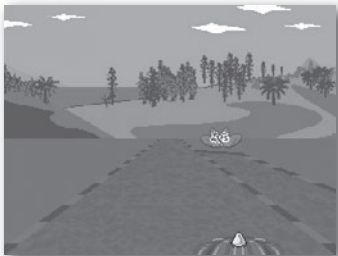
Find the objects

- Pedal the cycle to move down the road. *The faster you pedal the faster you go!*
- Use the handlebar to steer.
- Find all the objects shown in the upper left of the screen. Simply drive into them. Don't bump into the other items.
- Travel around the road, through different time periods where you'll see different kinds of dinosaurs: Triassic, Jurassic and Cretaceous.



Taking snap shots

- Press the right handlebar button  to take snap shots in any activity.



Off ramps

- Keep traveling down the road or head onto an off-ramp for other fun games and activities. Simply bear to the side of the road as you see one approaching.

Hint: If you miss your ramp, you can pedal in reverse to back up.



TRIASSIC TRAILS



Learn about Triassic Dinosaurs

- Use the joystick to choose one of the dinosaurs of the Triassic Period. Press a handlebar button to make your selection. Now, see page 8 for more instructions!



JURASSIC JUNGLE



Learn about Jurassic Dinosaurs

- Use the joystick to choose one of the dinosaurs of the Jurassic Period. Press a handlebar button to make your selection. Now, see page 8 for more instructions!

CRETACEOUS CRATERS



Learn about Cretaceous Dinosaurs

- Use the joystick to choose one of the dinosaurs of the Cretaceous Period. Press a handlebar button to make your selection. Now, see the next section for more instructions!



- Use the joystick and handlebar buttons to select a tool at the bottom of the screen.



Learn what the dinosaur ate.



Learn the size of the dinosaur.



Learn fun facts about the dinosaur.



See the dinosaur's skeleton.



Return to the main screen.

- When you're finished with this activity, press the exit button (🖱️) to return to the road. Pedal to the next activity.



BREAKFAST FOR BABY



Timer

Move the baby dinosaur through the maze to its breakfast.

- Use the joystick to move the baby dinosaur through the maze.

Hint: Some dinosaurs eat meat and others eat plants. Be sure to head for the right breakfast so you don't lose time!

- Try to get there as fast as you can. Look at the timer in the lower right corner of the screen.
- Choose the right food and your dino is happy. Choose the wrong food and your dino lets you know!
- When you're finished with this activity, press the exit button (🖱️) to return to the road. Pedal to the next activity.



CREATURE SORT



Creatures to Catch

Nets

Score

Use the net to catch creatures and score points.


- Look at the creatures in the lower left of the screen to see what type and number of creatures you need to catch.
- Use the joystick to move the net and catch the creatures. Score points for every creature you catch!
- If you catch the wrong creature, you lose a net. If you lose all three nets, the game is over.
- When you're finished with this activity, press the exit button (🖱️) to return to the road. Pedal to the next activity.



FOSSIL FRENZY



Match the pictures on the cards as fast as you can.

- Use the joystick to choose a card. Press a handlebar button to turn it over and see what's on the other side.
- Turn over another card to find its match.
- Try to find all of the matches as fast as you can. Look at the timer to see how fast you were!
- When you're finished with this activity, press the exit button  to return to the road. Pedal to the next activity.

RAPTOR RACEWAY GAME



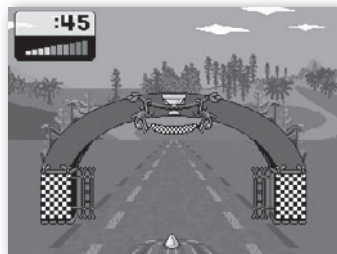
Pedal as fast as you can to the finish line!

- Use the joystick to choose a *1 Player* or *2 Player* game. Press either handlebar button to select the game.




1 Player

- Pedal down the road as fast as you can to the finish line. Try to speed past the dinosaurs racing against you. Get to the finish line first and you win!

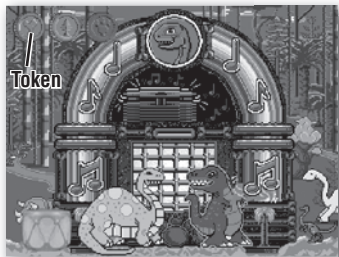


2 Player

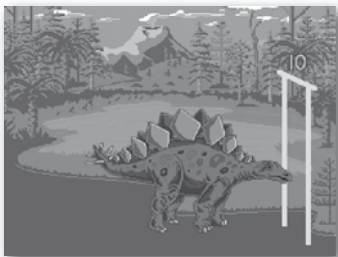
- Each player takes a turn. Pedal down the road as fast as you can to the finish line. Look at your time.
- Now, it's time for *Player 2* to beat your time.
- The player with the fastest time wins.
- When you're finished with this activity, press the exit button  to return to the road. Pedal to the next activity.




BONUS ACTIVITY



- To visit the bonus activity, you need to visit all of the activities around the road and complete the first level of each game.
- Use the joystick to choose a colored token.
- Press a handlebar button to “drop” it in the jukebox.
- Watch the dinos dance and do the limbo!



- See which types of dinosaurs fit under the limbo stick and which are too tall. How low can they go?
- When you're finished with this activity, press the exit button  to return to the road. Pedal to the next activity.




TRAVEL JOURNAL





See previous
snap shot

See next
snap shot

- Press the travel journal button . Then use the joystick and handlebar buttons to review and select a snap shot.

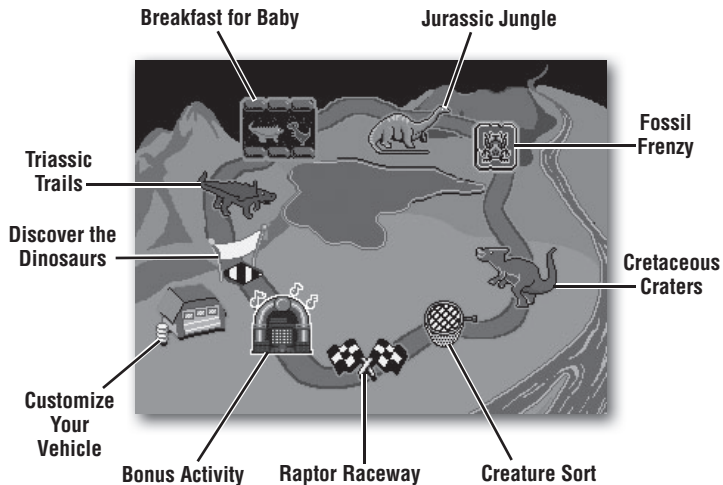



Stamp Tool Erase

- Next, use the joystick and handlebar buttons to select the stamp tool  to decorate your picture.
- Choose a stamp with the joystick and handlebar buttons and place it on the snap shot.
- Select the erase button  to clear the screen and decorate another picture.



THE MAP



- You can travel down the road and head onto an off-ramp to access activities or simply press the map button  to visit any of the activities around the course.

CONSUMER INFORMATION



CONSUMER ASSISTANCE

1-800-432-5437 (US & Canada)
1300 135 312 (Australia)

service.fisher-price.com

Fisher-Price, Inc., 636 Girard Avenue, East Aurora, NY 14052.
Hearing-impaired consumers: 1-800-382-7470.

Outside the United States:

Canada: Mattel Canada Inc., 6155 Freemont Blvd.,
Mississauga, Ontario L5R 3W2; www.service.mattel.com.

Great Britain: Mattel UK Ltd, Vanwall Business Park,
Maidenhead SL6 4UB. Helpline: 01628 500303.
www.service.mattel.com/uk

Mattel Europa, B.V., Gondel 1, 1186 MJ Amstelveen, Nederland.

Australia: Mattel Australia Pty. Ltd., 658 Church Street,
Locked Bag #870, Richmond, Victoria 3121 Australia.

New Zealand: 16-18 William Pickering Drive,
Albany 1331, Auckland.

- Wipe with a clean cloth dampened with a mild soap and water solution. Do not immerse.
- This product has no consumer serviceable parts. Do not take this product apart.



- Protect the environment by not disposing of this product with household waste (2002/96/EC). Check your local authority for recycling advice and facilities (Europe only).