



Product Manual

TABLE OF CONTENTS

- Getting Started 1**
 - What’s included..... 1
 - How to put your Force on..... 1
- Setting up Fitbit Force on a computer 3**
 - Mac & PC Requirements 3
 - Installing Fitbit Connect on a computer 3
 - Mac installation..... 3
 - PC Installation..... 3
 - Pairing to a computer..... 4
 - Mac pairing..... 4
 - PC pairing..... 5
 - Wireless sync to a computer..... 6
- Setting up Fitbit Force on a mobile device 7**
 - Mobile device requirements 7
 - Installing the Fitbit App..... 7
 - iOS pairing 7
 - iOS syncing 8
 - Manual sync..... 8
 - Real-time dashboard 8
 - Background sync..... 8
 - Android pairing..... 10
 - Android syncing 10
 - Tap to sync using Near-Field Communication (NFC)..... 11

Manual sync.....	11
Background sync.....	11
Using your Force	12
Wearing your Force	12
Wearing on your dominant vs. non-dominant wrist.....	12
Using your Force in wet conditions.....	12
Battery life and power	12
Battery life	12
Charging your Force.....	13
Memory.....	13
Tracking with Fitbit Force.....	14
Tracking goals with Force	14
Tracking sleep with Force.....	15
Tracking sleep on your mobile device	15
Tracking activities with Force	16
Silent Alarms.....	17
Setting silent alarms from a computer.....	17
Setting silent alarms from an iOS device.....	17
Setting silent alarms from an Android device.....	18
Dismissing silent alarms	18
Your Fitbit.com Dashboard.....	19
Browser Requirements.....	19
Using your Dashboard.....	19
Logging food, activities, and sleep	19
Device info.....	19

Managing your Force from Fitbit.com	20
Updating Fitbit Force.....	21
Updating Force on a computer	21
Updating Force on an iOS device	21
Updating Force on an Android device	22
Fitbit Force General Info & Specifications.....	23
Sensors and motors	23
Size and weight.....	23
Environmental conditions	23
Help.....	24
Return policy and warranty.....	24
Regulatory and Safety Notices	25
USA: Federal Communications Commission (FCC) Statement	25
Canada: Industry Canada (IC) Statement	26
EU (European Union):.....	27
Other	27
Safety Statement	27
Important Safety Instructions	27
Built-in Battery Precautions	28
Disposal and Recycling Information.....	28

GETTING STARTED

WHAT'S INCLUDED

Your Fitbit Force Wireless Activity + Sleep Wristband box includes:

- Force tracker
- Charging cable
- Wireless sync dongle



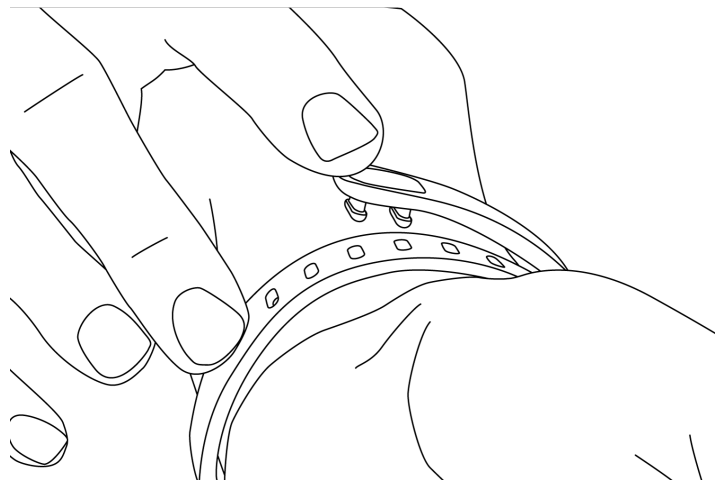
Force tracker

Charging cable

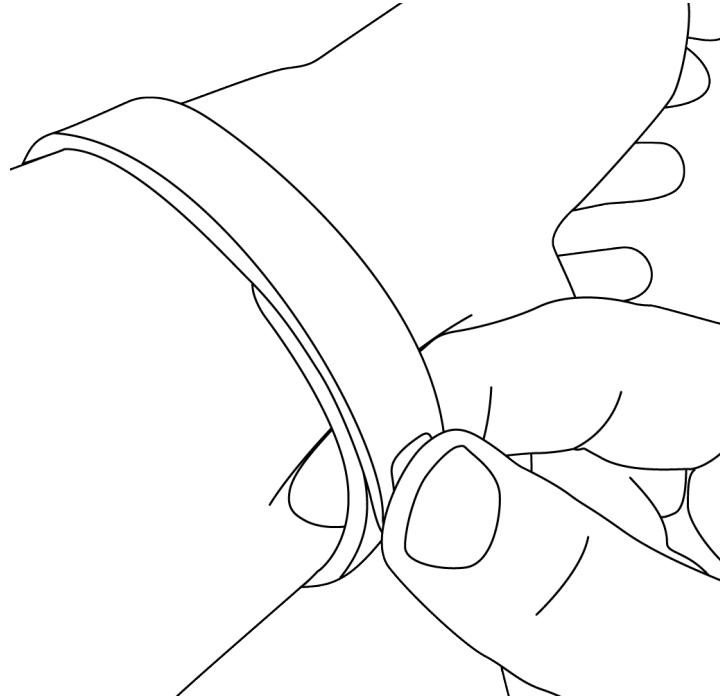
Wireless sync
dongle

HOW TO PUT YOUR FORCE ON

1. Put on the wristband so the screen is closest to the outside of your wrist and facing you.
2. Align both ends of the wristband so they are directly overlapping each other with the clasp over the two holes that best fit your wrist.



3. Squeeze both the clasp and the wristband between your thumb and forefinger until you hear a click.



You'll know your Force wristband is securely fastened if both ends of the wristband are fully inserted.



NOTE: If you're having trouble, try securing the wristband off your wrist to get a feel for how it securely clasps and then try again on your wrist.

SETTING UP FITBIT FORCE ON A COMPUTER

MAC & PC REQUIREMENTS



Software
Mac OS 10.5 or later
Internet Connection

Hardware
USB port



Software
Windows XP, Vista, 7, 8
Internet Connection

Hardware
USB port

INSTALLING FITBIT CONNECT ON A COMPUTER

Fitbit Connect is the software application that connects your Force tracker to your Fitbit.com Dashboard. It is available to download at no cost from Fitbit.com.

NOTE: If you already have Fitbit Connect installed on your computer, you will need to download the latest version to set up your Force.

MAC INSTALLATION

1. Go to <http://www.fitbit.com/setup>.
2. Verify that Mac is highlighted and click the **Download Here** button below Force.
3. Double-click the .dmg file in your Downloads folder.

NOTE: If the file does not appear on your desktop, search for “Fitbit Connect” using the Spotlight search feature.

4. Run the Fitbit Connect installation package by double-clicking **Install Fitbit Connect.pkg**.
5. Follow the onscreen instructions to complete setup.

PC INSTALLATION

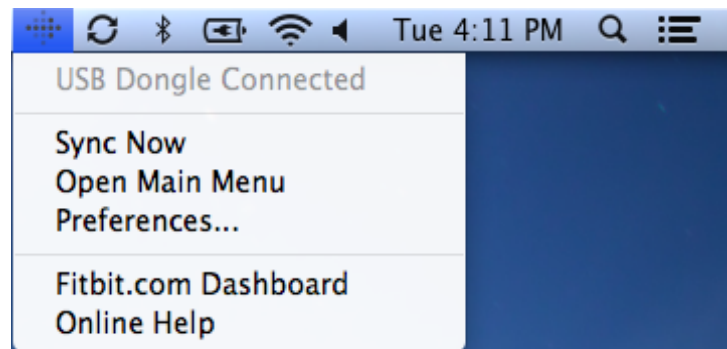
1. Go to <http://www.fitbit.com/setup>.
2. Verify that PC is highlighted and click the **Download Here** button below Force.
3. Go to your Downloads folder and double-click the **FitbitConnect_Win.exe** file.
4. Choose your language and follow the onscreen instructions.

PAIRING TO A COMPUTER

Once Fitbit Connect is installed on your computer, you can pair your Force to your account. This will sync your data and allow you to manage device settings.

MAC PAIRING

1. On the Menu Bar of your Mac, click the Fitbit Connect icon and choose **Open Main Menu**.



2. From the Main Menu, select **Set Up a New Fitbit Device**.
3. Account Setup:
 - a. Select **New to Fitbit** to set up your device if you don't already have a Fitbit.com account.
 - b. Select **Existing User** to log into your existing Fitbit.com account and replace an existing device with your Force.

NOTE: Only one Fitbit tracker can be paired to an account.

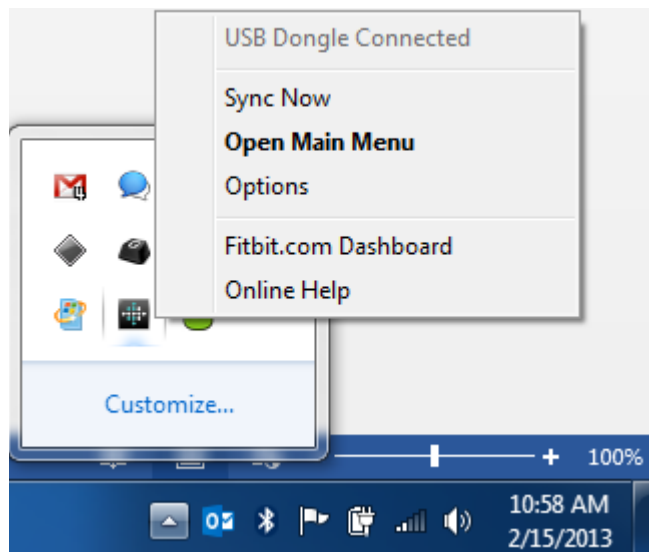
4. Enter or confirm your personal information and click **Next**. This information personalizes your Fitbit experience and improves the accuracy of your calorie burn and distance data. By default this personal information is visible only to your friends, but you can adjust your privacy settings from your Fitbit.com account to control what information is shared with others.
5. Choose **Force** as the device you're setting up and follow the onscreen instructions to power on your Force and put on the wristband.
6. Once you've inserted the wireless sync dongle, click **Continue**.
7. Fitbit Connect will search for your Force. Once found, a four-digit number will appear on your Force screen. Enter this number where prompted and click **Next**. If Fitbit Connect can't find your Force, click **Try Again** and follow the onscreen instructions for further help.

NOTE: If you experience trouble setting up your Force, you can get support at <http://help.fitbit.com>.

8. Enter your Force greeting and click **Next**. The greeting can be a maximum of 8 characters, including letters, numbers, and symbols.
9. You're all set. Follow the onscreen instructions to see an introduction to your Force.

PC PAIRING

1. In the Windows System Tray, right-click the Fitbit Connect icon and choose **Open Main Menu**.



2. From the Main Menu, select **Set Up a New Fitbit Device**.
3. Account Setup:
 - a. Select **New to Fitbit** to set up your device if you don't already have a Fitbit.com account.
 - b. Select **Existing User** to log into your existing Fitbit.com account and replace an existing device with your Force.

NOTE: Only one Fitbit tracker can be paired to an account.

4. Enter or confirm your personal information and click **Next**. This information personalizes your Fitbit experience and improves the accuracy of your calorie burn and distance data. By default this personal information is visible only to your friends, but you can adjust your privacy settings from your Fitbit.com account to control what information is shared with others.

5. Choose **Force** as the device you're setting up and follow the onscreen instructions to power on your Force and put on the wristband.
6. Once you've inserted the wireless sync dongle, click **Continue**.
7. Fitbit Connect will search for your Force. Once found, a four-digit number will appear on your Force screen. Enter this number where prompted and click **Next**. If Fitbit Connect can't find your Force, click **Try Again** and follow the onscreen instructions for further help.

NOTE: If you experience trouble setting up your Force, you can get support at <http://help.fitbit.com>.

8. Enter your Force greeting and click **Next**. The greeting can be a maximum of 8 characters, including letters, numbers, and symbols.
9. You're all set. Follow the onscreen instructions to see an introduction to your Force.

WIRELESS SYNC TO A COMPUTER

Wireless syncing to Fitbit.com is automatic, as long as:

- Your computer is powered on, awake, and connected to the internet
- The wireless sync dongle is plugged in
- Fitbit Connect is installed and running

Your Force tracker will sync whenever it is within 20 feet of your computer.

You can manually sync your Force by clicking on the Fitbit Connect icon, which is located near the time and date on your computer. Select **Sync Now** to start the manual sync.

NOTE: If you experience any trouble syncing your Force with your computer, you can visit <http://help.fitbit.com> for further help.

SETTING UP FITBIT FORCE ON A MOBILE DEVICE

MOBILE DEVICE REQUIREMENTS

The Fitbit Force is capable of setting up and syncing with select mobile devices that support Bluetooth 4.0 technology. To see if your mobile device is compatible with your Force, visit <http://www.fitbit.com/devices>.

NOTE: If your mobile device is not compatible to sync via Bluetooth, you can still use the Fitbit App to view your data and track your progress, however you will need to complete setup using a Mac or PC.

INSTALLING THE FITBIT APP

You can find the Fitbit App on the iOS App store or Google Play store by searching for “Fitbit”. If you already have the Fitbit App installed, check for available updates to make sure you have the latest version.

IOS PAIRING

Unlike most Bluetooth accessories, like headsets, your Force must be paired directly through the Fitbit App, not through the Settings app on your iOS device.

1. Open the Fitbit App.
2. Account Setup:
 - a. Select **Set up** if you don't already have a Fitbit.com account.
 - b. Select **Log in** to log into your existing Fitbit.com account.

NOTE: Are you an existing Fitbit App user?

Only one Fitbit tracker can be paired to an account.

If you're replacing an existing tracker, log in to your account and **More > Devices > Set up a new Fitbit device**.

3. If you're setting up a device, tap Force and then **New to Fitbit**.
4. Enter the email address and password for your Fitbit account.
5. Enter your personal details, then select **Save**. This information personalizes your Fitbit experience and improves the accuracy of your calorie burn and distance

data. By default this personal information is visible only to your friends, but you can adjust your privacy settings on the Fitbit website to control what information is shared with others.

6. Follow the onscreen prompts to power on your Force and put on the wristband.
7. Tap **I'm Ready** to start pairing your Force.
8. Once the Force is found, enter the four digits that appear on its screen and click **Next**.
9. Once the Fitbit App shows the message "Your Force is linked to Fitbit" you can tap **Next** to complete setup.

NOTE: If you experience trouble pairing your Force, you can get support at <http://help.fitbit.com>.

IOS SYNCING

Your Force can sync directly to supported iOS devices via Bluetooth. To see if your iOS device is compatible with your Force, go to <http://www.fitbit.com/devices>.

Syncing occurs automatically every time you open the Fitbit App, as long as Bluetooth is enabled in the iOS device Settings app.

MANUAL SYNC

To initiate a manual sync while the app is already open:

1. Tap **More**.
2. Tap **Devices**.
3. Tap **Force**.
4. Tap the **Sync Now** icon.

REAL-TIME DASHBOARD

You can use the Fitbit App to see your stats update in real time. Open the Fitbit App. Once your Force syncs, the message "Connected to your Force" will appear at the top of the screen. Take a few steps to see your stats update instantly.

BACKGROUND SYNC

The Fitbit App also supports Background Sync. This setting allows your Force to sync with your iOS device while the Fitbit app is running in the background.

To turn on Background Sync, tap **More** > **Devices** > choose your **Force** > switch Background Sync to **On**.

ANDROID PAIRING

Unlike most Bluetooth accessories, your Force must be paired directly through the Fitbit App, and not through your Android device's Bluetooth preferences.

1. Open the Fitbit App.
2. Account Setup:
 - a. Select **Set up** if you don't already have a Fitbit.com account.
 - b. Select **Log in** to log into your existing Fitbit.com account.

NOTE: Are you an existing Fitbit App user?

Only one Fitbit tracker can be paired to an account.

If you're replacing an existing tracker, log into your account and tap the **Menu button** > **Devices** > **Set up new device**.

3. If you're setting up a device, tap Force and then enter the email address and password for your Fitbit account.
4. Enter your personal details, then tap **Save**. This information personalizes your Fitbit experience and improves the accuracy of your calorie burn and distance data. By default this personal information is only visible to your friends, but you can adjust your privacy settings on the Fitbit website to control what information is shared with others.
5. Tap **Set up Now**.
6. Follow the onscreen prompts to power on your Force and put on the wristband.
7. Tap **I'm Ready** to start pairing your Force.
8. Once the Force is found, enter the four digits that appear on its screen and click **Next**.
9. Once the Fitbit App shows the message "Your Force is linked to Fitbit" you can tap **Next** to complete setup.

NOTE: If you experience trouble pairing your Force, you can get support for this and other questions at <http://help.fitbit.com>.

ANDROID SYNCING

Your Force can sync directly to supported Android devices via Bluetooth. To check if your Android device is compatible with your Force, see <http://www.fitbit.com/devices>.

Syncing will occur automatically when you open the Fitbit App, as long as Bluetooth is enabled in both the Android device settings and the Fitbit App. To turn on Bluetooth in the Fitbit App, tap the **Menu button** > **Devices** > check **Use Bluetooth**.

TAP TO SYNC USING NEAR-FIELD COMMUNICATION (NFC)

Your Force is equipped with Near-Field Communication (NFC) technology, allowing it to interact with Android devices that support this feature.

With the screen on and unlocked, tap your Android device to the top of your Force. You may need to adjust the location based on where your Android device's NFC chip is located.

After a moment, the Fitbit App will automatically open. If you haven't opened the Fitbit App recently, launching will automatically sync via Bluetooth.

MANUAL SYNC

To initiate a manual sync with your Force and Fitbit.com:

1. Open the Fitbit App.
2. Tap the **Menu** button.
3. Tap **Devices**.

NOTE: Make sure Use Bluetooth is checked.

4. Tap **Force**.
5. Tap the **Sync Now** icon.

BACKGROUND SYNC

The Fitbit App also supports Background Sync. This setting allows your Force to sync with your Android device while the Fitbit app is in the background or minimized.

To turn on Background Sync, tap the **menu** button > **Devices** > choose your **Force** > tap **Background Sync**.

USING YOUR FORCE

WEARING YOUR FORCE

Your Force is designed to be most accurate when worn on your wrist. If you need help securing your wristband, see [How to put your Force on](#).

WEARING ON YOUR DOMINANT VS. NON-DOMINANT WRIST

To get the most accurate reading from your Force, you can configure whether you are wearing the wristband on your dominant or non-dominant wrist.

NOTE: Your dominant wrist is that which you use for most day-to-day activities, e.g., writing, washing dishes, or throwing a ball.

To configure this setting:

1. Log in to Fitbit.com.
2. Click the **gear** in the top-right corner of the Dashboard.
3. Click **Settings**.
4. Click **Devices** on the left sidebar.
5. Under Dominant Hand choose the correct setting.

NOTE: Changes to this setting will not appear until you sync your Force.

USING YOUR FORCE IN WET CONDITIONS

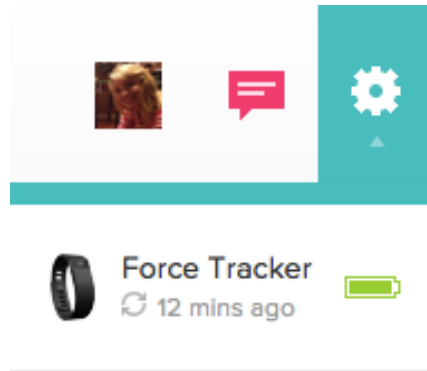
Your Force can be worn while you are in the shower, or working out. It is sweat-proof, rain-proof, water resistant, and can be submerged in water up to one meter.

BATTERY LIFE AND POWER

BATTERY LIFE

Your Force comes equipped with a rechargeable lithium-polymer battery.

With normal use, your Force should last about 7 to 10 days before needing a charge. You can check the level of your battery by logging in to Fitbit.com and clicking on the gear icon on the top-right corner of the page.



You can also view the battery level using the iOS or Android app on the Devices screen.

CHARGING YOUR FORCE

To charge your Force, plug the charging cable into the USB port on your computer and plug the other end into the port on the back of the Force.

FPO

Charging completely can take up to three hours.

MEMORY

When you sync your Force, your activity data is uploaded to your Fitbit.com Dashboard. Your Force holds detailed minute-by-minute information for the most recent 7 days, and up to 30 days of daily activity summaries.

Your recorded data consists of steps taken, calories burned, floors climbed, distance traveled and Very Active Minutes.

Sync your Force regularly to have the most detailed data available to view on your Fitbit.com Dashboard.

NOTE: Your Force starts tracking your goal for the next day at 12:00AM for the time zone selected in your personal settings on your Fitbit.com account. You can adjust your time zone at <http://www.fitbit.com/user/profile/edit>.

This does not delete the previous day's data; that data will be uploaded to your Fitbit.com Dashboard the next time you sync your Force.

TRACKING WITH FITBIT FORCE

Your Force tracks:

- Steps taken
- Floors climbed
- Calories burned
- Distance traveled
- Very Active Minutes
- Hours slept
- Quality of sleep

TRACKING GOALS WITH FORCE

Your Force is designed to track your progress towards one specific goal that you define on your Fitbit.com Dashboard. Goals can be set for steps taken, floors climbed, calories burned, distance traveled, and Very Active Minutes. When you reach your goal, your Force will vibrate and flash to celebrate.

To choose the specific goal you want to track:

1. Log in to your Fitbit.com Dashboard.
2. Click the **gear** icon in the top-right corner of the page.
3. Click **Settings**.
4. Click **Devices**.
5. Under Main Goal, **choose** the goal you would like to track.
6. **Sync** your Force to send the new goal to your tracker.

NOTE: You can only select one goal to track at a time, but you can change this goal or its value at any time on your Fitbit.com Dashboard.

Once you've chosen which goal you want to track, you can set a specific value for that goal on the Fitbit.com [Dashboard page](#) or using the Fitbit App for mobile.

TRACKING SLEEP WITH FORCE

Your Force can track the hours you sleep and your activity during sleep to help you understand your sleep quality.

To enter sleep mode, hold the button on the side of your Force for 1 to 2 seconds. Your Force will display a stopwatch to indicate that sleep mode has begun.

When you wake up, press and hold the button on your Force to exit sleep mode.

If you forget to put your Force into sleep mode, you can always enter your sleep time at <http://www.fitbit.com/sleep>. After creating a record, you will be able to view your sleep efficiency.

TRACKING SLEEP ON YOUR MOBILE DEVICE

You can track your sleep using the Fitbit App on your mobile device. If you use your device as an alarm, the sleep-tracking feature will still operate if the Fitbit App is not on your screen.

To track sleep on your iOS device:

1. Open the Fitbit App.
2. Tap **More**.
3. Tap **Sleep**.
4. Tap the **+ button** in the top-right corner.
5. Tap **Begin Sleep Now**.

To track sleep on your Android device:

1. Open the Fitbit App.
2. Tap the **menu** next in the top-left corner of the app.
3. Tap **Sleep**.
4. Tap the **+ button** in the top-right corner.
5. Tap **Begin Sleep Now**.

If you minimize the Fitbit App by pressing the home button, your sleep will continue to be tracked. When you wake up, just open the Fitbit App again, and tap **I'm Awake**, then **View Summary** to see a summary of your sleep.

TRACKING ACTIVITIES WITH FORCE

Your Force automatically tracks your steps, distance, floors climbed, calories burned, and Very Active Minutes. Using the stopwatch feature you can track non-step activities, such as weight lifting or swimming, or activities that require more than just steps, such as tennis and yoga. To place the stopwatch in activity mode, press and hold the button on the side of your Force for 2 to 3 seconds until you see the stopwatch appear. When the activity is completed, press and hold the button again. The activity will appear on your dashboard under Activities > Activity History.

SILENT ALARMS

Your Force gently vibrates to wake or alert you with its silent alarm feature. You can set alarms using your computer or a compatible mobile device.

Silent alarms can be configured to recur every day, or on particular days of the week.

You can set up to eight alarms on your Force.

NOTE: Setting multiple alarms may diminish the battery life of your Force.

SETTING SILENT ALARMS FROM A COMPUTER

You can set silent alarms from your computer by using the Fitbit.com Dashboard.

1. Log in to your Fitbit.com Dashboard.
2. Click the **gear** icon in the top-right corner of the page.
3. Click **Settings**.
4. Click **Silent Alarms**.
5. Click the **Add Alarm** button.
6. Enter the time you want the alarm to alert you.
7. Choose how often you want the alarm to occur:
 - a. Once - Your alarm will alert you at the specified time, and not repeat.
 - b. Repeats - Choose which days you want this alarm to repeat every week.
8. Click **Save**.

Your new alarm will be synced to your Force the next time you sync your tracker.

NOTE: If you want to sync the alarm immediately, open Fitbit Connect and select **Sync Now**.

SETTING SILENT ALARMS FROM AN IOS DEVICE

To set silent alarms using the Fitbit App for iOS, Bluetooth must be enabled in your iOS Settings app.

Your iOS device also must support Wireless Sync. To see if your device is supported, go to <http://www.fitbit.com/devices>.

1. Open the Fitbit App.
2. Tap **More**.
3. Tap **Silent Alarm**.
4. Tap **Add a new alarm**.

5. Set the time by adjusting the click-wheel.
6. If you prefer, tap the days of the week you want this alarm to repeat.
7. Tap **Save**.

Your iOS device will now sync the alarm to your Force.

NOTE: Make sure your Force is nearby in order to sync your alarm. To manually sync the alarm to it, tap **More** > **Devices** > choose **Force** > tap the **Sync Now** icon.

SETTING SILENT ALARMS FROM AN ANDROID DEVICE

To set silent alarms using the Fitbit App for Android, Bluetooth must be enabled in your Android device settings, as well as the Fitbit App Devices screen.

Your mobile device also must support Wireless Sync. To check if your device is supported, see <http://www.fitbit.com/devices>.

1. Open the Fitbit App.
2. Tap the **menu** button.
3. Tap **Device Settings**.
4. Choose **Force**.
5. Tap **Silent Alarm**.
6. Tap **Add a new alarm**.
7. Tap **Next**.
8. Tap **Add a new alarm**.
9. Tap the **time** to enter a time.
10. If you prefer, tap the **Repeats** checkbox and tap the days of the week you want this alarm to repeat.
11. Tap **Done**.
12. Tap the **Sync tracker to save alarms** button.





NOTE: Make sure your Force is nearby in order to sync your alarm. To manually sync the alarm, tap the **Menu button** > **Device Settings** > choose **Force** > tap the **Sync Now** icon.

DISMISSING SILENT ALARMS

Your Force will vibrate when your silent alarm goes off and the screen will flash. This notification will repeat several times until dismissed. You can dismiss the alarm by pressing the button on the side of the Force. If you do not dismiss the alarm, it will repeat in nine minutes.

YOUR FITBIT.COM DASHBOARD

BROWSER REQUIREMENTS

BROWSER	MAC VERSION	WINDOWS VERSION
 Apple Safari	5.0.5 and higher	Not Supported
 Google Chrome	12 and higher	12 and higher
 Microsoft Internet Explorer	Not Supported	8 and higher
 Mozilla Firefox	3.6.18 and higher	3.6.18 and higher

USING YOUR DASHBOARD

Fitbit provides you with a free online tool to help track, manage, and evaluate your fitness progress.

When you log into Fitbit.com, you will automatically be taken to your Dashboard. Your Dashboard shows an overview of your progress towards your goals, as well as graphs with historical data.

LOGGING FOOD, ACTIVITIES, AND SLEEP

From your Dashboard, you can launch individual log pages to keep track of your food, activities, sleep, and other custom trackers. Custom trackers are available to log anything we have not already provided a tracker for. Examples might be how many grams of sugar you eat in a day or how many caffeinated beverages you consumed.

DEVICE INFO

You can see a quick preview of your tracker's last sync, battery level, and upcoming alarms if you click on the **gear** icon in the top-right corner of the page.

MANAGING YOUR FORCE FROM FITBIT.COM

Manage your tracker from Fitbit.com by clicking the **gear** icon in the top-right corner of the page, clicking **Settings**, and choosing **Devices** from the left sidebar.

The Devices screen allows you to change:

- **Display Settings**: Hide and show items to customize what you see on your Force display. You can also drag items up and down to change the order in which they appear.
- **Main Goal**: Choose which goal you want your Force to celebrate. You can edit the value of this goal from the Fitbit.com Dashboard or your mobile device using the Fitbit App.
- **Dominant Hand**: Choose which wrist you wear your Force on to get the most accurate data readings. More information on this topic is located [here](#).
- **Clock Display**: Choose from four different clock styles.
- **Sleep Tracking**: Set the sensitivity of your sleep tracking by changing this setting. The Normal setting is sufficient for most people. If you are a sound sleeper, you can choose Sensitive to capture the smallest movements of your body.

You can manage silent alarms by clicking **Silent Alarms** from the left sidebar.

NOTE: You must sync your Force in order to apply any changed settings to your tracker.

UPDATING FITBIT FORCE

Fitbit may release free updates for your Force. You can update your Force using Fitbit Connect on your computer, or the Fitbit App on your mobile device.

We recommend that you keep your Force updated. The latest feature enhancements and product improvements are made through updates.

NOTE: Updating your Force takes about 5 to 7 minutes and requires a minimum battery level. It is recommended that you charge your Force prior to updating or while the update is in progress.

UPDATING FORCE ON A COMPUTER

To update your Force on a Mac or PC.

1. Click the **Fitbit Connect icon** near the time and date.
2. From the **Main Menu**, choose **Check for device update**.
3. **Log in** to your account using your Fitbit.com credentials.
4. Fitbit Connect will now look for your Force.

NOTE: Make sure your wireless sync dongle is plugged in.

5. If an update has been found for your Force, Fitbit Connect will display a progress bar indicating that the update is in progress. Keep your Force close to your computer while you perform the update.
6. When the update completes, Fitbit Connect will say “You’re all set!”

If you have trouble updating your Force on a computer, see <http://help.fitbit.com>.

UPDATING FORCE ON AN IOS DEVICE

Your Force can be updated using the Fitbit App for iOS, if your iOS device is compatible with the Wireless Sync feature. To see if it is compatible, go to <http://www.fitbit.com/devices>.

1. Open the Fitbit App.
2. Tap **More**.
3. Tap **Devices**.
4. Choose **Force** from the menu.
5. If an update is available, the option **Update your Fitbit Force** will appear at the bottom of this screen.

NOTE: Make sure your Force remains near your iOS device while finding and updating it.

6. When the update completes, the Fitbit App will say “You’re all set!”

If you have trouble updating your Force with the Fitbit App for iOS, see <http://help.fitbit.com> for more information.

UPDATING FORCE ON AN ANDROID DEVICE

Your Force can be updated using the Fitbit App for Android if your Android device is compatible with the Wireless Sync feature. To see if it is compatible, go to <http://www.fitbit.com/devices>.

1. Open the Fitbit App.
2. Tap the **Menu** button.
3. Tap **Device Settings**.

NOTE: Make sure Use Bluetooth is checked.

4. Choose **Force** from the menu.
5. If there is an update available, tap the **Update Available** button at the top of this screen.

NOTE: Make sure your Force remains near your Android device while finding and updating it.

6. When the update completes, the Fitbit App will say “You’re all set!”

If you have trouble updating your Force with the Fitbit App for Android, see <http://help.fitbit.com> for more information.

FITBIT FORCE GENERAL INFO & SPECIFICATIONS

SENSORS AND MOTORS

Your Force uses a MEMS 3-axis accelerometer that measures your motion patterns to determine your calories burned, distance traveled, steps taken, and sleep quality. Its altimeter also measures floors climbed. Force also contains a vibration motor, which allows it to vibrate when alarms go off.

SIZE AND WEIGHT

	Length	Width	Weight
Small wristband	5.5 – 6.9 in 140 – 176 mm	0.6 in 13.99 mm	13.4 grams
Large wristband	6.3 – 8.2 in 161 – 209 mm	0.76 in 19.2 mm	14.6 grams

ENVIRONMENTAL CONDITIONS

Operating Temperature	-4° to 113° F (-20° to 45° C)
Non-operating Temperature	-22° to 140° F (-30° to 60° C)
Water Resistant	Device is water-resistant but should not be submerged more than one meter.
Maximum Operating Altitude	30,000 feet (9,144 m)

HELP

Troubleshooting and assistance for your Fitbit Force tracker can be found at <http://help.fitbit.com>.

RETURN POLICY AND WARRANTY

Warranty information and the Fitbit.com Store Return Policy can be found online at <http://www.fitbit.com/returns>.

REGULATORY AND SAFETY NOTICES

Model Name: FB402

USA: FEDERAL COMMUNICATIONS COMMISSION (FCC) STATEMENT

This device complies with FCC part 15 FCC Rules.

Operation is subject to the following two conditions:

1. This device may not cause harmful interference and
2. This device must accept any interference, including interference that may cause undesired operation of the device.

FCC Warning

Changes or modifications not expressly approved by Fitbit, Inc. could void the user's authority to operate the equipment.

Note: This equipment has been tested and found to comply with the limits for a Class B digital device, pursuant to part 15 of the FCC Rules. These limits are designed to provide reasonable protection against harmful interference in a residential installation. This equipment generates, uses and can radiate radio frequency energy and, if not installed and used in accordance with the instructions, may cause harmful interference to radio communications. However, there is no guarantee that interference will not occur in a particular installation. If this equipment does cause harmful interference to radio or television reception, which can be determined by turning the equipment off and on, the user is encouraged to try to correct the interference by one or more of the following measures:

- Reorient or relocate the receiving antenna.
- Increase the separation between the equipment and receiver.
- Connect the equipment into an outlet on a circuit different from that to which the receiver is connected.
- Consult the dealer or an experienced radio/TV technician for help.

This device meets the FCC and IC requirements for RF exposure in public or uncontrolled environments.

Cet appareil est conforme aux conditions de la FCC et IC pour l'exposition aux RF dans des environnements publics ou incontrôlée

CANADA: INDUSTRY CANADA (IC) STATEMENT

IC Notice to Users English/French in accordance with RSS GEN Issue 3:

This device complies with Industry Canada license exempt RSS standard(s).
Operation is subject to the following two conditions:

1. this device may not cause interference, and
2. this device must accept any interference, including interference that may cause undesired operation of the device.

Cet appareil est conforme avec Industrie Canada RSS standard exempts de licence (s).
Son utilisation est soumise à Les deux conditions suivantes:

1. cet appareil ne peut pas provoquer d'interférences et
2. cet appareil doit accepter Toute interférence, y compris les interférences qui peuvent causer un mauvais fonctionnement du dispositif

CAN ICES-3 (B)/NMB-3(B)

FCC ID XRAFB402

IC ID 8542A-FB402

EU (EUROPEAN UNION):

Declaration of Conformity with Regard to the EU Directive 1999/5/EC

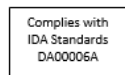
Fitbit Inc. is authorized to apply the CE Mark on Force, Model FB402, thereby declaring conformity to the essential requirements and other relevant provisions of Directive 1999/5/EC.



Compliant with the standard R&TTE 99/CE/05

Conforme à la norme R&TTE 99/CE/05

OTHER



SAFETY STATEMENT

This equipment has been tested to comply with safety certification in accordance with the specifications of EN Standard: EN60950-1:2006 + A12: 2011.

The complete Declaration of Conformity can be found at www.fitbit.com/force/specs

IMPORTANT SAFETY INSTRUCTIONS

- Read these instructions.
- Keep these instructions.
- Heed all warnings
- Follow all instructions
- Do not attempt to open the tracker. Substances contained in this product and/or its battery may damage the environment and/or human health if handled and disposed of improperly.
- Do not tamper with your Force.
- Do not use abrasive cleaners to clean your Force.
- Do not place your Force in a Dishwasher, Washing Machine or Dryer.
- Do not expose your Force to extremely high or low temperatures.

- Do not use your Force in a sauna or steam room.
- Do not leave your Force in direct sunlight for an extended period of time.
- Do not leave your Force near open flames.
- Do not dispose of your Force in a fire. The battery could explode.
- Do not attempt to disassemble your Force, it does not contain serviceable components.
- Never allow children to play with the Force; the small components may be a choking hazard!

BUILT-IN BATTERY PRECAUTIONS

- Do not attempt to replace your Force's battery. It is built-in and not changeable.
- Charge your Force using a certified computer, powered hub or power supply
- Charge the battery in accordance with the instructions supplied with this guide.
- Use only the charger cable that shipped with your product to charge the battery.
- Do not attempt to force open the built-in battery

For the most up-to-date Safety and Regulatory Information, please visit the product specific section at <http://help.fitbit.com>

DISPOSAL AND RECYCLING INFORMATION



The symbol on the product or its packaging signifies that this product has to be disposed separately from ordinary household wastes at its end of life. Please kindly be aware that this is your responsibility to dispose electronic equipment at recycling centers so as to help conserve natural resources. Each country in the European Union should have its collection centers for electrical and electronic equipment recycling. For information about your recycling drop off point, please contact your local electrical and electronic equipment waste management authority or the retailer where you bought the product.

Le symbole sur le produit ou sur son emballage signifie que ce produit à la fin de sa vie doit être recyclé séparément des déchets ménagers ordinaires. Notez que ceci est votre responsabilité d'éliminer les équipements électroniques à des centres de

recyclage afin d'aider à préserver les ressources naturelles. Chaque pays de l'Union européenne a ses centres de collecte et de recyclage pour le recyclage des équipements électriques et électroniques. Pour plus d'informations ou trouver un centre de recyclage, contactez votre commune ou le magasin où vous avez acheté le produit.

- Do not dispose of the Force with household waste.
- Batteries are not to be disposed of in municipal waste stream and require separate collection.
- Disposal of the packaging and your Force should be done in accordance with local regulations.

For additional information on disposal and recycling, including contact details of a distributor in your region, please visit <http://help.fitbit.com>

Pour plus amples renseignements sur le recyclage, y compris les coordonnées d'un distributeur dans votre région, visitez <http://help.fitbit.com>





 fitbit force™
Wireless Activity + Sleep Wristband