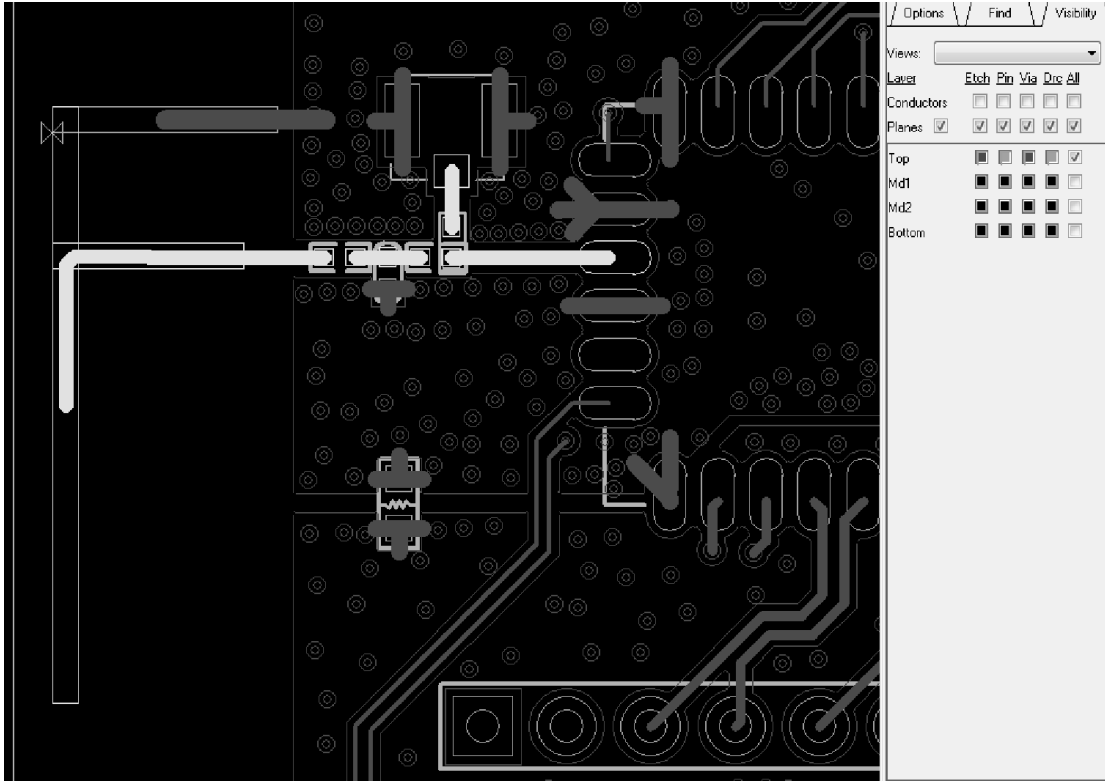
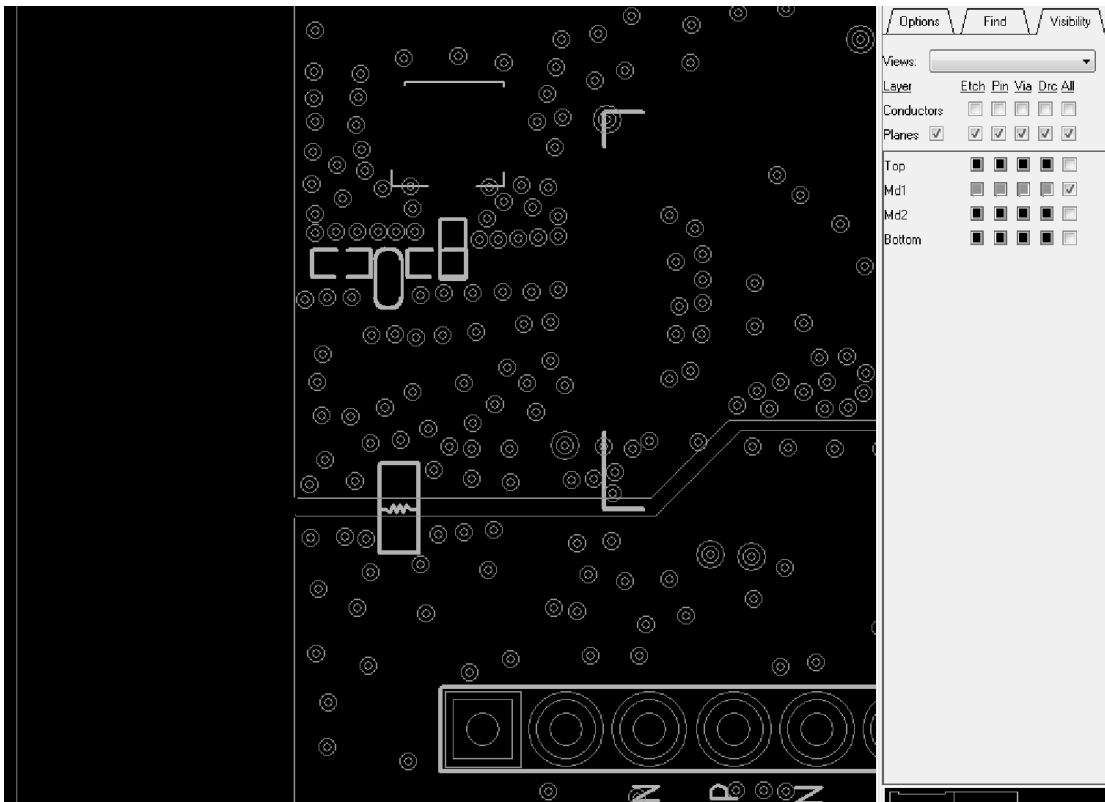


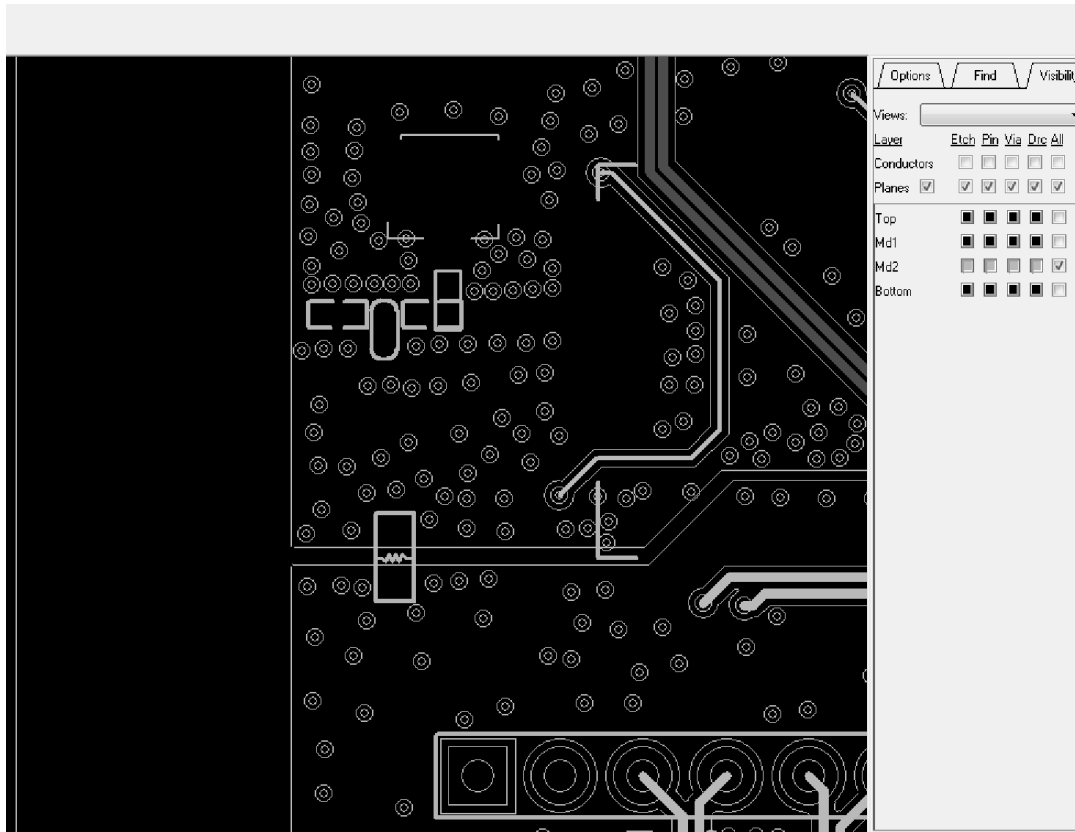
PCB
TOP 层



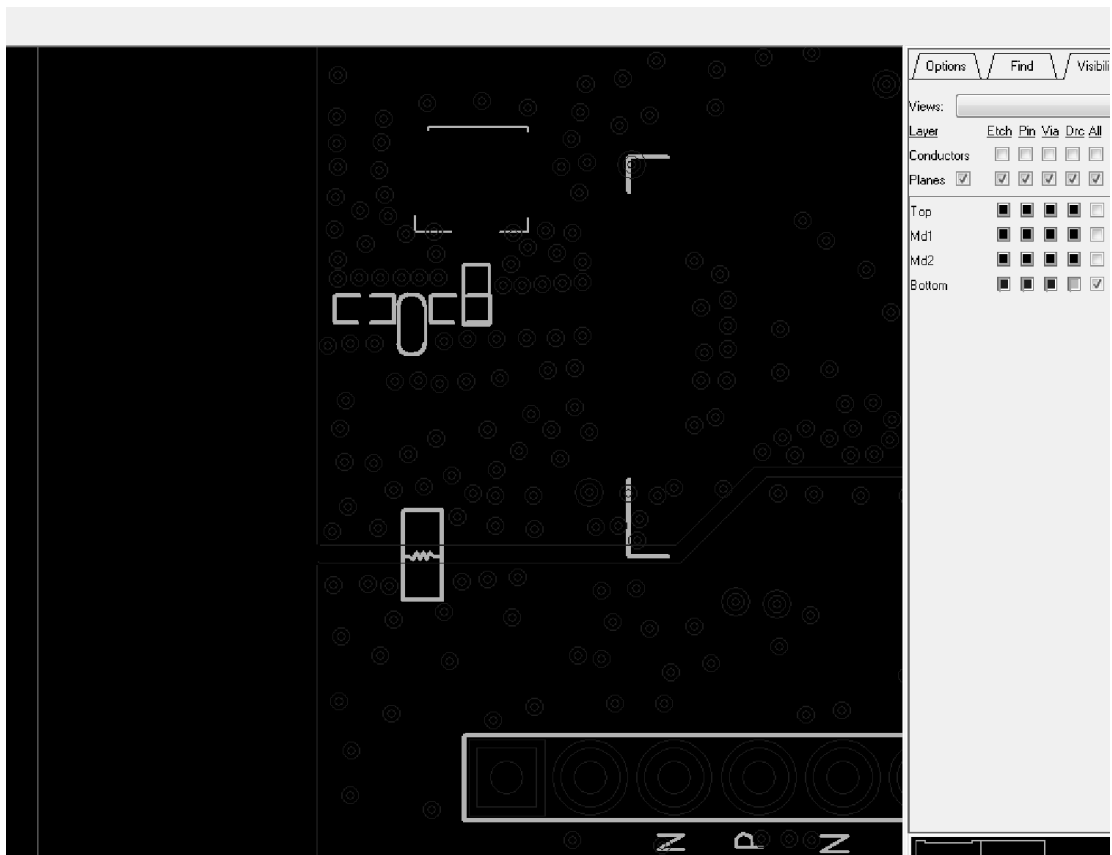
LAYER2



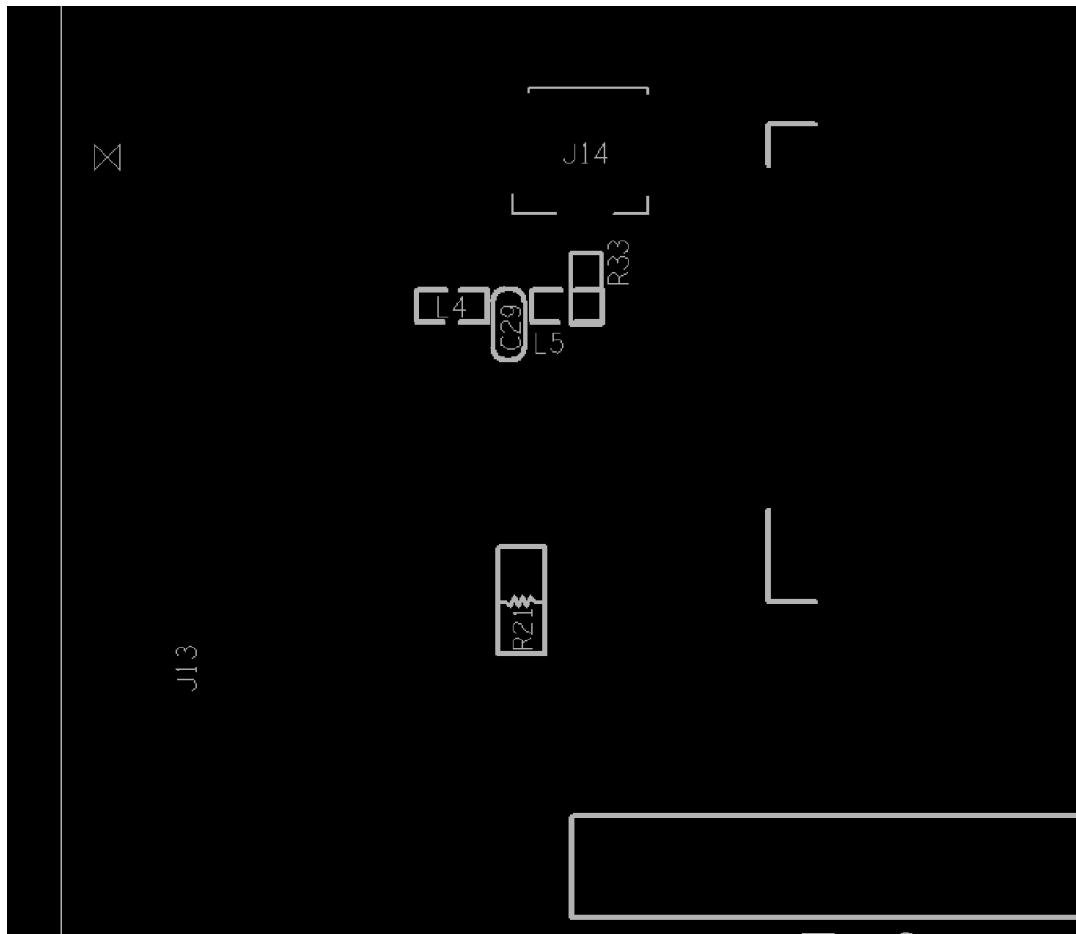
LAYER3



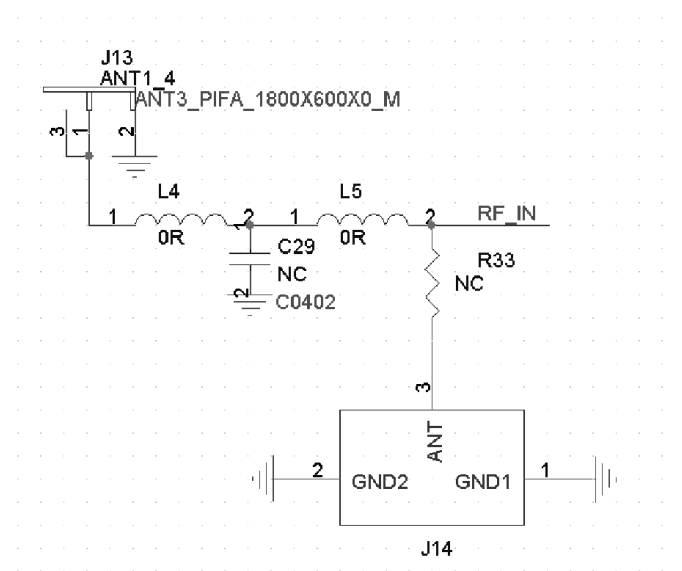
BOTTOM 层

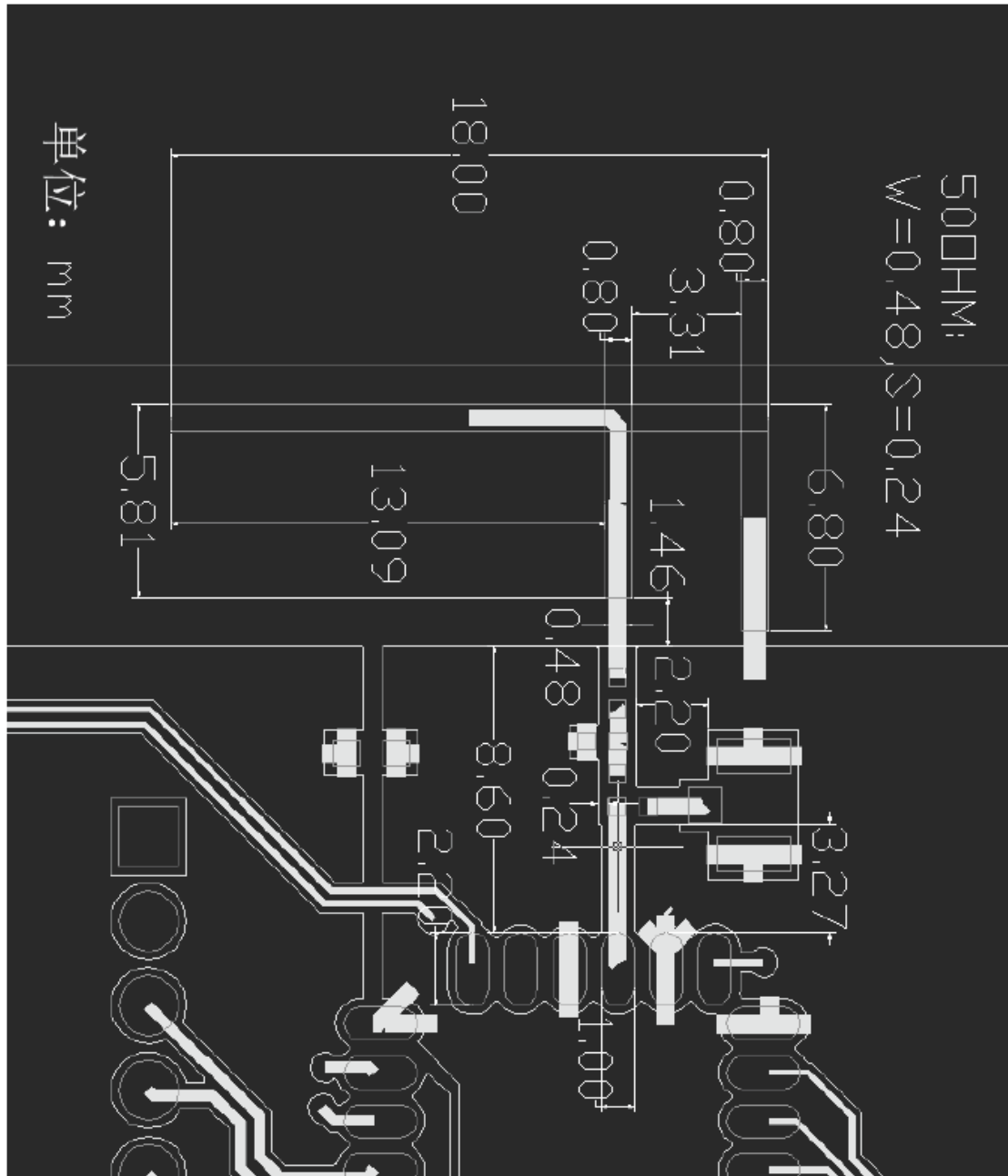


丝印层



原理图:





PCB description is as follows:

Lamination, dielectric constant, and related dimensions are as follows:

----- L1 Outer layer copper 0.3 oz thick (finished copper 1 oz thick)

≈≈≈≈≈ PP 2116+7628H

■■■■■■ L2/L3 DG 0.8mm (The inner finished copper is 1 oz thick)

≈≈≈≈≈ PP 2116+7628H

----- L4 Outer layer copper 0.3 oz thick (finished copper 1 oz thick)

Complete the thickness: 1.6+/-0.16mm

dielectric constant 4.2