

# Raymarine®

## RCU-3 Remote Control Unit — Installation and operation



### Warning: Maintain a permanent watch

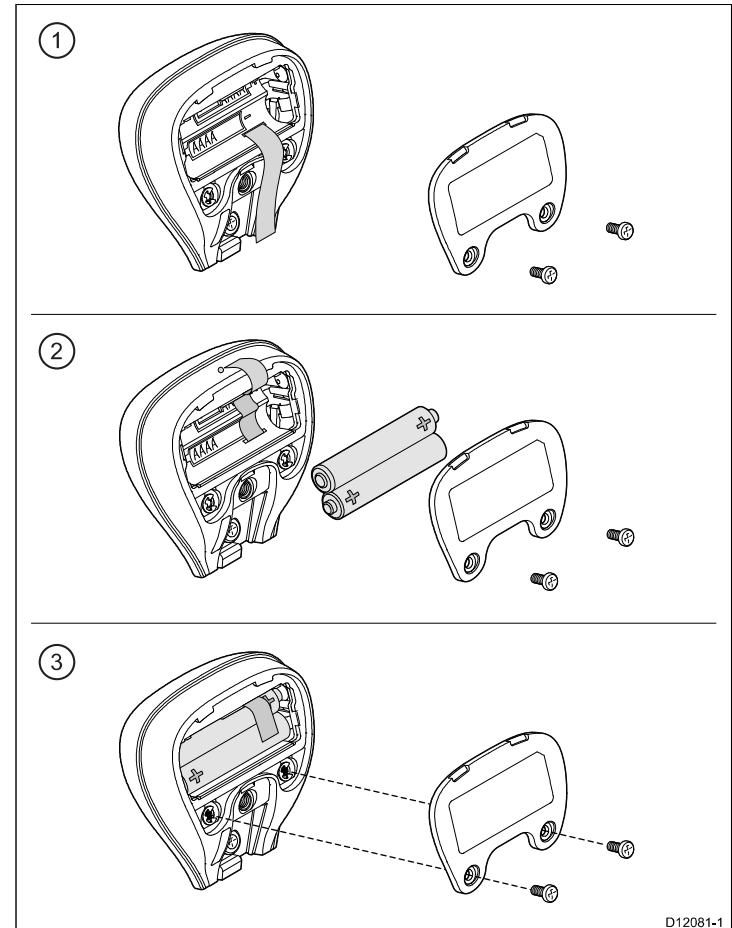
Always maintain a permanent watch, this will allow you to respond to situations as they develop. Failure to maintain a permanent watch puts yourself, your vessel and others at serious risk of harm.

## Installation and set-up

Installation and set-up of the remote control unit involves the following:

- Inserting the batteries.
- Pairing the remote control unit with a compatible multifunction display.
- Configuring the **UP** and **DOWN** buttons.
- Mounting the remote control unit to a steering wheel (if required). Alternatively a lanyard is supplied for wearing the remote control unit around your neck.
- Customizing the **SHORTCUT** button (optional).

## Inserting and replacing batteries



1. Remove the screws on the back panel to reveal the battery compartment.
2. Ensure the ribbon is positioned flush against the bottom of the battery compartment, as shown in the diagram above. Gently insert 2x AAAA batteries into the compartment. Ensure that you observe the correct polarity, as indicated in the battery compartment.
3. Ensure the ribbon is accessible once the batteries are in place. Replace the back cover and tighten screws.

**Note:** A warning message is displayed on the multifunction display when the remote control unit batteries are running low. If the remote will not be used for a prolonged period, remove the batteries to avoid leakage or unnecessary power drain.

## Pairing the remote and configuring the UP and DOWN buttons

The remote control unit must be “paired” with the multifunction display that you want to control. On your multifunction display:

1. Press **MENU**.
2. Select **System Setup**.
3. Select **Connections**.
4. Select **Bluetooth**.
5. Select **ON**.
6. Press Back to return to the Connections menu.
7. Select **New Connection**.
8. On your **remote control unit**, hold down the UP and DOWN buttons for 5 seconds.

A list of discovered devices is displayed.

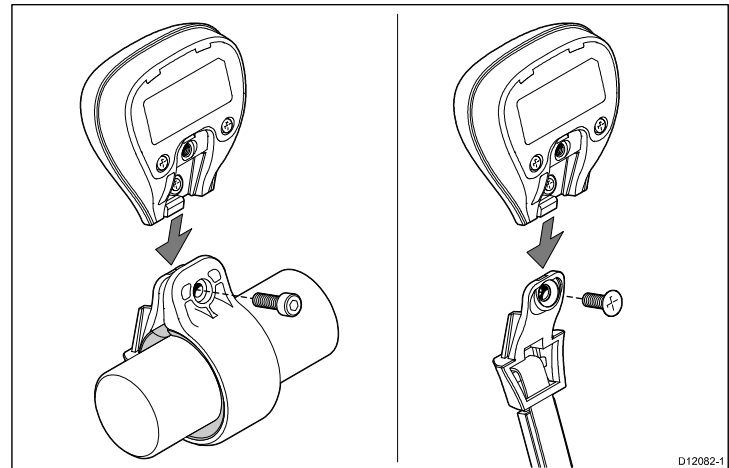
9. Select the remote control unit in the list of devices.

10. When prompted, press the arrow button on your remote that you wish to be configured as the UP button. The other arrow button will automatically be configured as the DOWN button.

If the pairing was successful a “Pairing Success” message will be displayed. If a “Pairing Failure” or “Pairing Timeout” message is displayed, repeat steps 1 to 10.

## Mounting the remote control unit

The remote control unit can be worn around your neck or mounted to a steering wheel. Adaptors are provided for both methods.



1. **For lanyard use:** attach the supplied lanyard to the unit and secure it with the supplied screw.
2. **For steering wheel use:** Choose a suitable location for the unit that is within reach and within 5 meters of the multifunction display that you want to control.

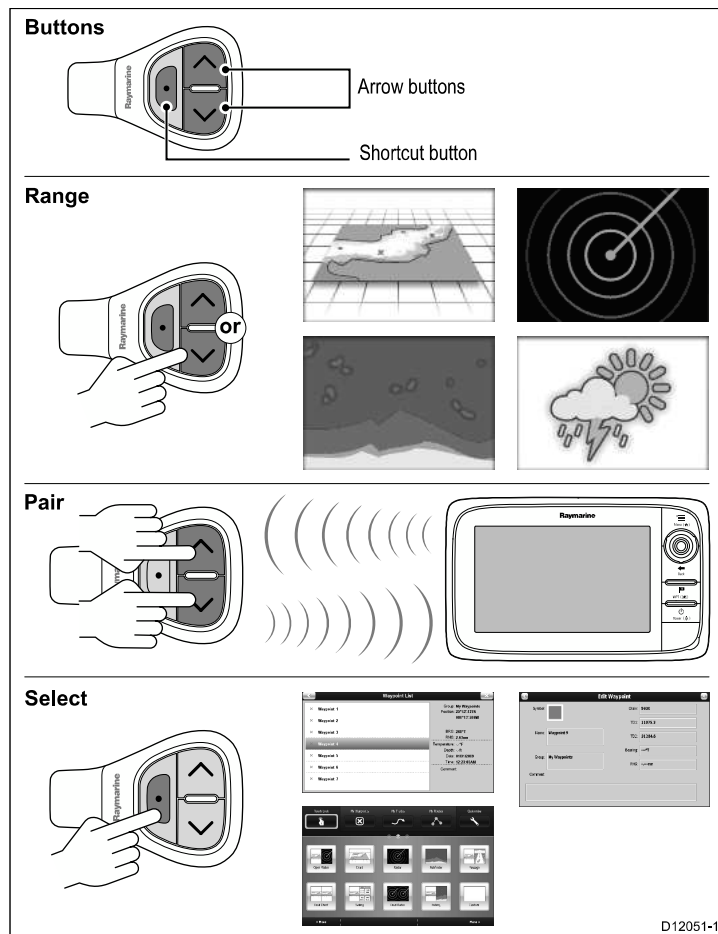
3. Choose a suitable orientation for the unit. It can be used with the buttons facing towards or away from the steering wheel.
4. A range of steering wheel adaptors is supplied. Select the adaptor that best suits the thickness of your steering wheel.
5. Wrap the adaptor around the wheel at the mounting position.
6. Gently pull apart the supplied clasp and wrap it around the adaptor and the steering wheel.
7. Push the remote on to the clasp, ensuring a good fit.
8. Tighten the screw until the clasp is tight around the wheel.

## Operating principles

Remote control operating principles.

- Only 1 multifunction display may be operated by a remote control unit at any one time. You cannot pair a multifunction display to more than 1 remote control at the same time.
- The 3 buttons on the remote control unit have different functions depending on the CONTEXT in which you are using it. For example, in the chart application the buttons control different functions than they do in the HOME screen.
- All functions are accessed using a combination of the 3 buttons. For some functions you must press a button **MOMENTARILY**. You can also **HOLD** a button for continuous response (for example, continuous ranging in the chart application).
- The main methods of operation involve the use of the **UP** and **DOWN** “arrow” buttons to highlight different on-screen options. The **SHORTCUT** button is used to select (execute) them.
- During the pairing process you must define which of the arrow buttons you want to be the “UP” button.
- The **SHORTCUT** button is customizable and can be configured to operate one of a number of functions, using the System Setup menu on your multifunction display.

## Remote control functions



	Button	Application where function available:				
		Chart	Radar	Fishfinder	Weather	Home screen
<b>Default functions:</b>						
Range / zoom	<ul style="list-style-type: none"> <li>Press UP or DOWN arrow for momentary response.</li> <li><b>Hold</b> UP or DOWN arrow for continuous response.</li> </ul>	✓	✓	✓	✓	✗
Open home screen	Shortcut: <b>Hold</b>	✓	✓	✓	✓	✗
Select application in home screen (in left-to-right, top-to-bottom order)	<ul style="list-style-type: none"> <li>Press UP or DOWN arrow for momentary response.</li> <li><b>Hold</b> UP or DOWN arrow for continuous response.</li> </ul>	✗	✗	✗	✗	✓
Toggle menu items and options in dialogs and prompts (in left-to-right, top-to-bottom order)	<ul style="list-style-type: none"> <li>Press UP or DOWN arrow for momentary response.</li> <li><b>Hold</b> UP or DOWN arrow for continuous response.</li> </ul>	✓	✓	✓	✓	✓
Place waypoint at vessel position	Shortcut	✓	✓	✓	✓	✗
<b>Customizable functions:</b>						
Open home screen	Shortcut	✓	✓	✓	✓	✗
Switch active application (only available when multiple applications are displayed)	Shortcut	✓	✓	✓	✓	✗

## Customizing the SHORTCUT button

On your multifunction display:

1. Press **MENU**.
2. Select **System Setup**.

3. Select **Remote Control**.
4. Select **Customize shortcut key**.
5. Select the function that you want to assign to the **SHORTCUT** key.

## Technical specification

Power requirement	3 V dc (1.5 V dc from each of 2 x AAAA batteries). Alkaline batteries are recommended.
Typical Operating range	5 meters (line of sight)
Environmental	<p><b>Operating environment</b></p> <ul style="list-style-type: none"> <li>• Operating temperature: -20°C to +55°C (0 °F to 131 °F)</li> <li>• Non-operating temperature: -30°C to +70°C (-8 °F to 158 °F)</li> <li>• Relative humidity limit: 93%</li> <li>• Water protection: waterproof to IPX7 standard.</li> </ul>

Data protocol	Bluetooth v2.1, HID v1.0
Conformance	<p>Europe:</p> <ul style="list-style-type: none"> <li>• 2004/108/EC</li> </ul> <p>Australia and New Zealand:</p> <ul style="list-style-type: none"> <li>• C-Tick, Compliance Level 2</li> </ul> <p>USA:</p> <ul style="list-style-type: none"> <li>• FCC certification</li> </ul> <p>Japan:</p> <ul style="list-style-type: none"> <li>• VCCI Certification</li> </ul> <p>China:</p> <ul style="list-style-type: none"> <li>• CCS Certification</li> </ul>

## FCC NOTICE:

THIS DEVICE COMPLIES WITH PART 15 OF THE FCC RULES. OPERATION IS SUBJECT TO THE FOLLOWING TWO CONDITIONS: (1) THIS DEVICE MAY NOT CAUSE HARMFUL INTERFERENCE, AND (2) THIS DEVICE MUST ACCEPT ANY INTERFERENCE RECEIVED, INCLUDING INTERFERENCE THAT MAY CAUSE UNDESIRE OPERATION.

NOTE: THE MANUFACTURER IS NOT RESPONSIBLE FOR ANY RADIO OR TV INTERFERENCE CAUSED BY UNAUTHORIZED MODIFICATIONS TO THIS EQUIPMENT. SUCH MODIFICATIONS COULD VOID THE USER'S AUTHORITY TO OPERATE THE EQUIPMENT.

**Raymarine**<sup>®</sup>  
A FLIR COMPANY

[www.raymarine.com](http://www.raymarine.com)

