



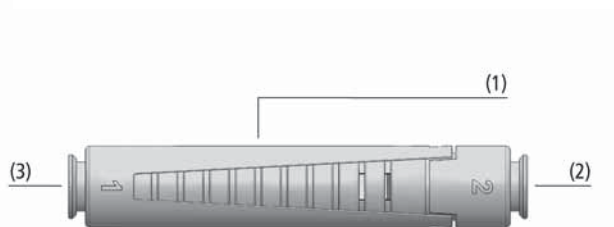
In-Line Ejectors - NSLPX Series

Suction Rate from 0.28 to 0.56 SCFM

The Numatics NSLPX series of in-line ejectors is designed for easy installation directly in the vacuum hose by means of push-in fittings. This product works extremely well in applications where the space is restricted. Applications include separation systems for plastic and sheet metal machining.



Decentralized vacuum generation by means of inline ejectors NtSLP for handling plastic injection molded parts



Design

- Two-piece housing made of light, impact-resistant plastic (1)
- Axial connection of compressed air (3) and vacuum (2) with quick-action push-in couplings for hose diameter 4 mm
- Vacuum generator with single nozzle in two power ratings, 0.5 and 0.7 mm diameter
- Air outlet with good flow characteristics
- Compact low profile design; only 10 mm thick

Technical Data NSLPX Series

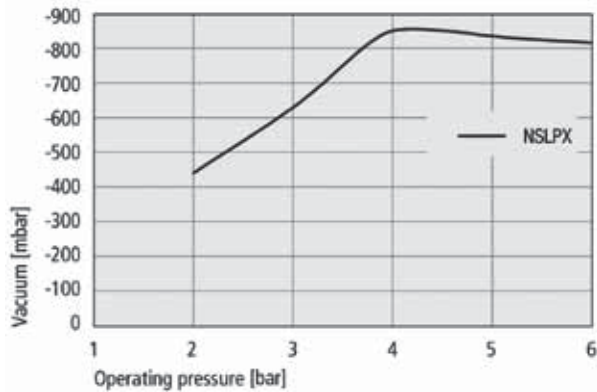
| Type | Nozzle-Ø (mm) | Degree of evacuation (%) | Max. suction rate (l/min) | Max. suction rate (m³/h) | Air consumpt. during evac. (l/min)* | Air consumpt. during evac. (m3/h)* |
|----------|---------------|--------------------------|---------------------------|--------------------------|-------------------------------------|------------------------------------|
| NSLPX 05 | 0.5 | 85 | 8 | 0.5 | 13 | 0.8 |
| NSLPX 07 | 0.7 | 85 | 16 | 1.0 | 25 | 1.5 |

| Type | Noise level workp. gripped (dB) | Noise level free (dB) | Operating pressure (bar) | Recomm. int. hose diameter compr. air/ vacuum (mm)** | Weight (g) | Operating temperature (°C) |
|----------|---------------------------------|-----------------------|--------------------------|--|------------|----------------------------|
| NSLPX 05 | 52 | 60 | 4.5 | 2 | 5 | 0...60 |
| NSLPX 07 | 63 | 63 | 4.5 | 2 | 5 | 0...60 |

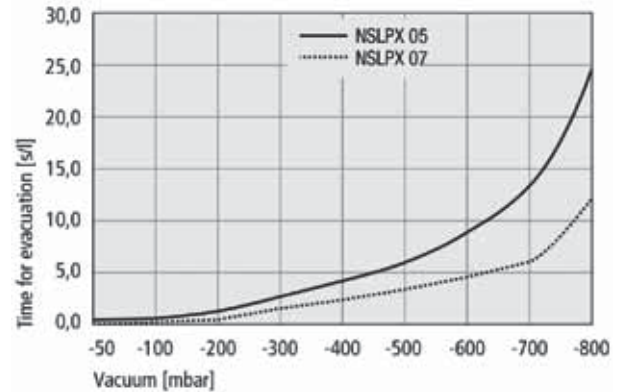
*At optimal operating pressure

**Up to a length of 2 m

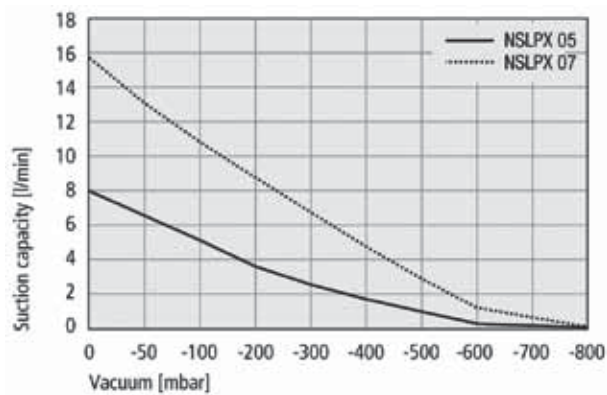
Performance Data Basic Ejectors NSLPX Series



Achievable vacuum at various operating pressures



Evacuation times for various vacuum ranges



Suction capacity at various degrees of evacuation

Suction Capacity in l/min at Various Degrees of Evacuation

| Type | Degree of evacuation in mbar | | | | | | | | | |
|-----------------|------------------------------|-------|-------|------|------|------|------|------|------|------|
| | 0 | -50 | -100 | -200 | -300 | -400 | -500 | -600 | -700 | -800 |
| NSLPX005XXXXXS1 | 8.00 | 6.42 | 4.97 | 3.76 | 2.65 | 1.79 | 1.06 | 0.32 | 0.10 | 0.05 |
| NSLPX007XXXXXS1 | 15.90 | 13.30 | 10.89 | 8.70 | 6.67 | 4.65 | 2.88 | 1.29 | 0.55 | 0.06 |

Evacuation Time in s/l for Various Vacuum Ranges

| Type | Degree of evacuation in mbar | | | | | | | | | |
|-----------------|------------------------------|------|------|------|------|------|------|------|------|--|
| | -50 | -100 | -200 | -300 | -400 | -500 | -600 | -700 | -800 | |
| NSLPX005XXXXXS1 | 0.4 | 0.7 | 1.6 | 2.7 | 4.0 | 5.8 | 8.5 | 13.1 | 24.5 | |
| NSLPX007XXXXXS1 | 0.2 | 0.4 | 0.8 | 1.4 | 2.2 | 3.2 | 4.6 | 6.7 | 12.7 | |

How to Order

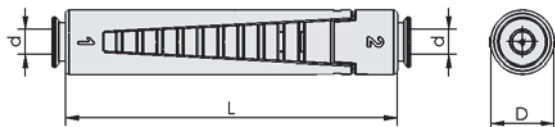
NSLPX Series

| Product Family Name | Part Number | Nozzle Size (mm) | Thread Type / Port Size | | Description - Features |
|---------------------|-----------------|------------------|-------------------------|---------------|---|
| | | | Pressure | Vacuum | |
| NSLPX | NSLPX005XXXXXS1 | 0.5 | Quick Connect | Quick Connect | Quick Connect Coupling fits 4mm OD Tube |
| | NSLPX007XXXXXS1 | 0.7 | Quick Connect | Quick Connect | Quick Connect Coupling fits 4mm OD Tube |

Vacuum Generators

Dimensions: mm

NSLPX Series



| Type | d | D | L |
|-----------------|---|----|----|
| NSLPX005XXXXXS1 | 4 | 10 | 57 |
| NSLPX007XXXXXS1 | 4 | 10 | 57 |

Generators-Ejectors: NSLPX Series

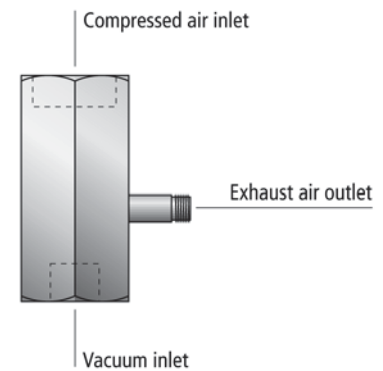
In-Line Ejectors - NVRXX Series

Suction Rate from 0.28 to 0.56 SCFM

No costly hose installation necessary; vacuum is generated directly at the point of use



Decentralized vacuum generation by means of inline ejector NVRXX for handling plastic parts



Design

- Body made of anodized aluminum
- Nozzle system made of brass
- Vacuum generator with single nozzle

Technical Data NSLPX Series

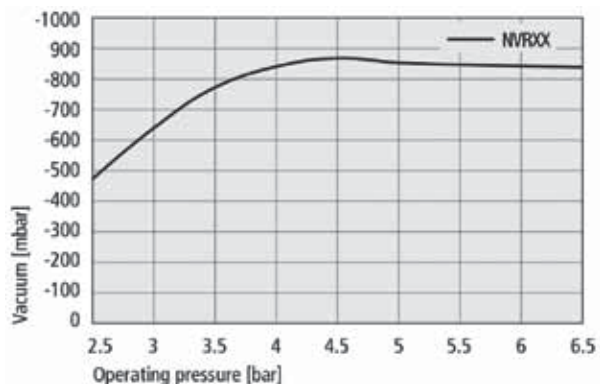
| Type | Nozzle-Ø (mm) | Degree of evacuation (%) | Max. suction rate (l/min) | Max. suction rate (m³/h) | Air consumpt. during evac. (l/min)* | Air consumpt. during evac. (m3/h)* | Operating pressure (bar) | Weight (g) | Operating temperature (°C) |
|--------|---------------|--------------------------|---------------------------|--------------------------|-------------------------------------|------------------------------------|--------------------------|------------|----------------------------|
| NVR 05 | 0.5 | 87 | 7 | 0.4 | 12 | 0.7 | 5 | 15 | 0..60 |
| NVR 07 | 0.7 | 90 | 14 | 0.8 | 21 | 1.3 | 5 | 15 | 0..60 |
| NVR 09 | 0.9 | 89 | 21 | 1.3 | 36 | 2.2 | 5 | 15 | 0..60 |

*At optimal operating pressure

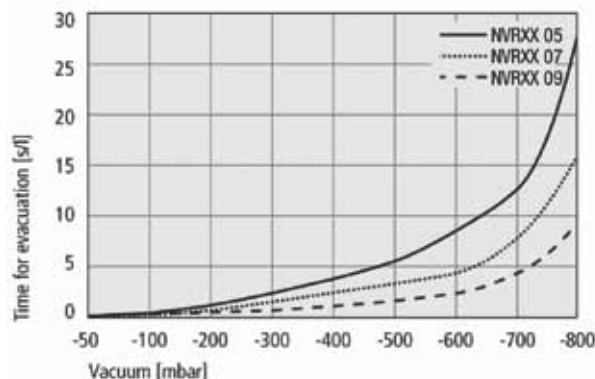
Vacuum Generators

Generators-Ejectors: NVRXX Series

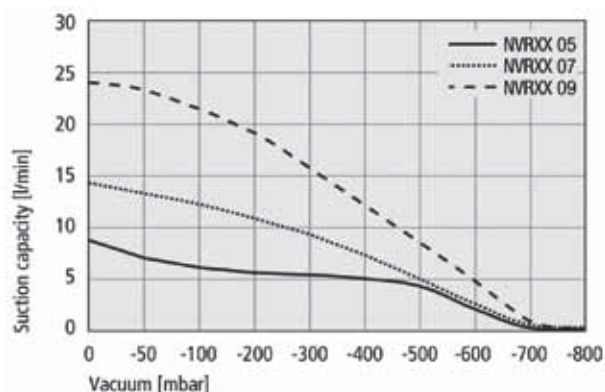
Performance Data Basic Ejectors NVRXX Series



Achievable vacuum at various operating pressures



Evacuation times for various vacuum ranges



Suction capacity at various degrees of evacuation

Suction Capacity in l/min at Various Degrees of Evacuation

| Type | Degree of evacuation in mbar | | | | | | | | | |
|--------|------------------------------|-------|-------|-------|-------|-------|------|------|------|------|
| | 0 | -50 | -100 | -200 | -300 | -400 | -500 | -600 | -700 | -800 |
| NVR 05 | 8.00 | 7.00 | 6.50 | 6.00 | 5.70 | 5.00 | 4.00 | 2.00 | 0.30 | 0.10 |
| NVR 07 | 14.00 | 13.00 | 12.50 | 11.00 | 9.50 | 7.40 | 5.00 | 3.00 | 0.45 | 0.20 |
| NVR 09 | 24.00 | 23.00 | 21.00 | 19.00 | 16.00 | 12.00 | 8.00 | 5.00 | 1.10 | 0.24 |

Evacuation Time in s/l for Various Vacuum Ranges

| Type | Degree of evacuation in mbar | | | | | | | | | |
|--------|------------------------------|------|------|------|------|------|------|-------|-------|--|
| | -50 | -100 | -200 | -300 | -400 | -500 | -600 | -700 | -800 | |
| NVR 05 | 0.37 | 0.73 | 1.53 | 2.55 | 3.83 | 5.55 | 7.84 | 12.61 | 27.25 | |
| NVR 07 | 0.21 | 0.41 | 0.84 | 1.41 | 2.17 | 3.17 | 4.77 | 7.79 | 15.65 | |
| NVR 09 | 0.10 | 0.22 | 0.49 | 0.81 | 1.25 | 1.83 | 2.75 | 4.45 | 8.62 | |

Vacuum Generators

Generators-Ejectors: NVRXX Series

How to Order

NVRXX Series

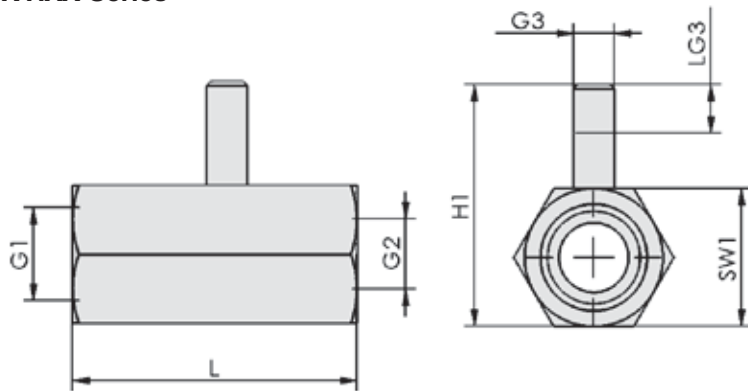
| Product Family Name | Part Number | Nozzle Size (mm) | Thread Type / Port Size | | Description - Features |
|---------------------|------------------|------------------|-------------------------|--------|-------------------------|
| | | | Pressure | Vacuum | |
| NVRXX | NVRXX005XXXXXXXX | 0.5 | G1/4-F | G1/8-F | Aluminum (Brass Nozzle) |
| | NVRXX007XXXXXXXX | 0.7 | G1/4-F | G1/8-F | Aluminum (Brass Nozzle) |
| | NVRXX009XXXXXXXX | 0.9 | G1/4-F | G1/8-F | Aluminum (Brass Nozzle) |

Vacuum Generators

Generators-Ejectors: NVRXX Series

Dimensions: mm

NVRXX Series



| Type | G1 (P) | G2 (V) | G3 (R) | H1 | L | LG3 | SW1 |
|------------------|---------|---------|--------|------|----|-----|-----|
| NVRXX005XXXXXXXX | G1/4"-F | G1/8"-F | M5-M | 29.8 | 35 | 5 | 17 |
| NVRXX007XXXXXXXX | G1/4"-F | G1/8"-F | M5-M | 29.8 | 35 | 5 | 17 |
| NVRXX009XXXXXXXX | G1/4"-F | G1/8"-F | M5-M | 29.8 | 35 | 5 | 17 |