

FLUKE.

pc3000 FC

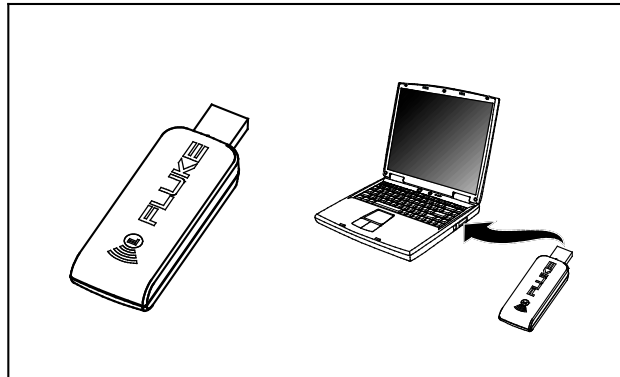
PC Adapter

Instruction Sheet

Introduction

The pc3000 FC PC Adapter is a USB device that receives and transmits a radio signal between a Fluke Connect 3000 Series Wireless Module and a computer. The Fluke Connect sw3000 application software uses the adapter to exchange data wirelessly with 3000 FC modules.

Fluke sw3000 FC is a Windows-based software application that allows real-time display measurements from up to six 3000 FC modules for each PC adapter. The software shows real-time graphs of individual module readouts. A user can download logged data and adjust the module parameters and settings, such as, module name, logging interval, and logging duration.



gxn10.eps

Software Requirements:

- Windows XP or later.
- Fluke pc3000 FC PC Adapter must be connected to the USB port to enable communication between the 3000 FC modules and the software application.
- sw3000 FC supports up to two PC adapters.

May 2014 ©2014 Fluke Corporation. All rights reserved.
Specifications are subject to change without notification.

How to Contact Fluke

To contact Fluke, call one of the following telephone numbers:

- USA: 1-800-760-4523
- Canada: 1-800-36-FLUKE (1-800-363-5853)
- Europe: +31 402-675-200
- Japan: +81-3-6714-3114
- Singapore: +65-6799-5566
- Anywhere in the world: +1-425-446-5500




Or, visit Fluke's website at www.fluke.com.

To register your product, visit <http://register.fluke.com>.

To view, print, or download the latest manual supplement, visit <http://us.fluke.com/usen/support/manuals>.

Safety Information

Symbols

| Symbol | Description |
|---|--|
|  | Conforms to European Union directives |
|  | Conforms to relevant Australian EMC requirements |
|  | This product complies with the WEEE Directive (2002/96/EC) marking requirements. The affixed label indicates that you must not discard this electrical/electronic product in domestic household waste. Product Category: With reference to the equipment types in the WEEE Directive Annex I, this product is classed as category 9 "Monitoring and Control Instrumentation" product. Do not dispose of this product as unsorted municipal waste. Go to Fluke's website for recycling information. |

Specifications

| | |
|------------------------------------|--|
| Operating Temperature | 10 °C to 30 °C |
| Storage Temperature | -40 °C to 60 °C |
| Relative Humidity | 0 % to 45 % (non-condensing) |
| Computer Interface | USB 1.1/2.0 |
| Wireless Frequency | 2.4 GHz ISM Band 20 meter range |
| Size (H x W x L) | 1.3 cm x 2.5 cm x 7.9 cm (0.5 in x 1.0 in x 3.1 in) |
| Weight | 20 g (0.7 oz) |
| Connection to PC | USB Type A |