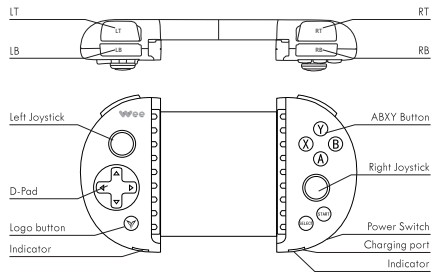


1. Product Introduction



2. Connect with Device

Power on: Slide up to turn on power switch, green power indicator will flash two times, then controller is turned on.

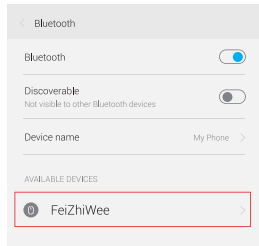
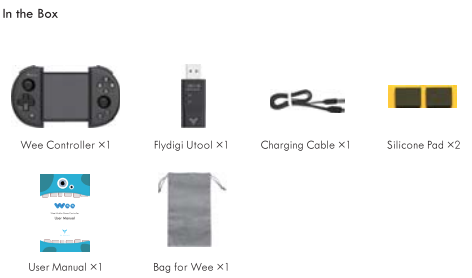
Power off: Slide down to turn off power switch, then controller is turned off.

Pairing: Press and hold Logo button for 5 seconds, blue light will flash quickly, then controller goes into pairing mode.

Standby: Controller goes to standby mode automatically after pressing and holding Logo button or not used for a period time.

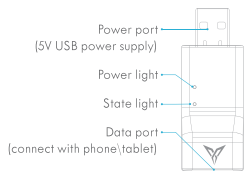
Wake up: To use the paired controller again, press Logo button to automatically reconnect. The blue indicator will slowly flash as the controller automatically connects to paired devices. After connection is successful, blue light is steadily on.

Charging: Wee controller has a built-in lithium battery. When power indicator is slowly flashing green, battery is low, please charge it as early as possible by connecting with a cable. When charging, red indicator is steadily on, and it goes out when charging is complete.



3. Activate Button Mapping

Flydigi Utool is a tool custom-designed for Android cellphones and tablets specifically to turn on button mapping services, it's root-free and no need for computer.

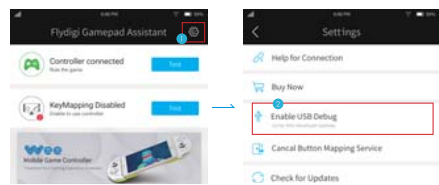


3.1 Install Flydigi Gamepad Assistant

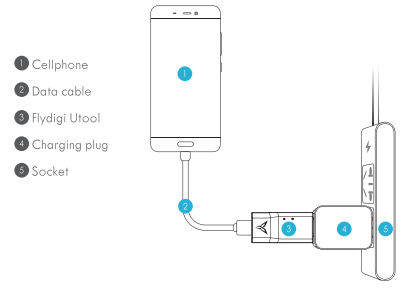
Scan QR code to download and install



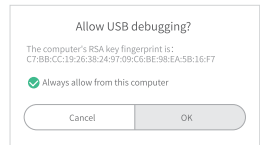
3.2 Open Flydigi Gamepad Assistant, click Settings - Enable USB Debug



Connect each part in sequence following 1-5, red light will stay steadily on.



3.4 Allow USB debugging on the phone, click OK.



3.5 After activation is completed, unplug the Flydigi Utool.



3.FAQ

1) The indicator of the controller is not on:

Check to see if the controller is switched on. If so, please charge the battery.

2) Blue light keeps flashing slowly

Slow flashing blue light indicates that the controller is searching for device which was paired before. If this continues for too long, please hold and press the Logo button for 3 seconds until the light goes off, then start pairing process again by holding the Logo key.

3) Joystick does not work properly

Joystick data calibration: Press START+SELECT simultaneously for 2 seconds until the blue light flashes twice.

4.Specifications

Supported Platform	Android	Cellphones or tablets with OS of Android 4.4 or above and Bluetooth 4.0
Wireless Frequency	2.402GHz-2.480GHz (Bluetooth 4.0 BLE)	
Power Consumption	Working Mode<4mA, Standby Mode<4uA	
Transmission Distance	>10m, disregard of any obstacle,	
Battery Capacity	300mAh lithium battery	
Working Hours	80 hours	
Rated Voltage	4.2V	
Rated Output	5V-100mA	
Charging Time	3-4 hours	

Use of silicone pads

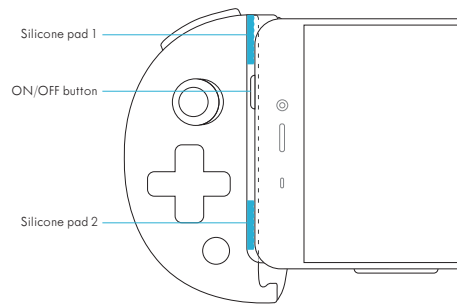
What does the silicone pads do?

Some On/Off on the cellphone is above the screen, landscape mode can cause the slot touching the ON/OFF button, which can lead to items not normally used. However, those ON/OFF button on the side will not need this pad.

How to use silicone pads to avoid the ON/OFF button getting stuck?

As shown below, it has glue on the two pads,you can tear and glue them on the corresponding area which can avoid ON/OFF button.

The thickness of the silicone pad can keep the ON/OFF button away from the slot and can play a good non-skid effect.



Shanghai Flydigi Electronics Technology Co.,Ltd.
www.flydigi.com/en

UM6009





FC

Federal Communication Commission (FCC) Radiation Exposure Statement

The device has been evaluated to meet general RF exposure requirement. The device can be used in portable exposure condition without restriction. Federal Communication Commission (FCC) Radiation Exposure Statement Power is so low that no RF exposure calculation is needed.

This device complies with part 15 of the FCC rules. Operation is subject to the following two conditions: (1) this device may not cause harmful interference, and (2) this device must accept any interference received, including interference that may cause undesired operation.

NOTE: The manufacturer is not responsible for any radio or TV interference caused by unauthorized modifications or changes to this equipment. Such modifications or changes could void the user's authority to operate the equipment.

NOTE: This equipment has been tested and found to comply with the limits for a Class B digital device, pursuant to part 15 of the FCC Rules. These limits are designed to provide reasonable protection against harmful interference in a residential installation. This equipment generates uses and can radiate radio frequency energy and, if not installed and used in accordance with the instructions, may cause harmful interference to radio communications. However, there is no guarantee that interference will not occur in a particular installation. If this equipment does cause harmful interference to radio or television reception, which can be determined by turning the equipment off and on, the user is encouraged to try to correct the interference by one or more of the following measures:

- Reorient or relocate the receiving antenna.
- Increase the separation between the equipment and receiver.
- Connect the equipment into an outlet on a circuit different from that to which the receiver is connected.
- Consult the dealer or an experienced radio/TV technician for help.