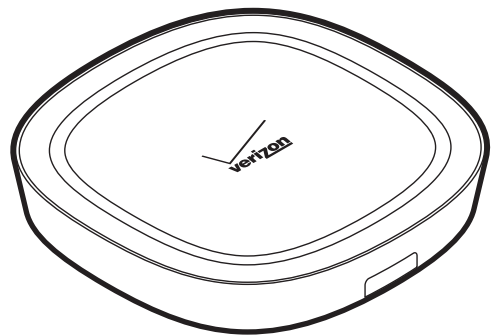




## VERIZON Qi WIRELESS CHARGING PAD



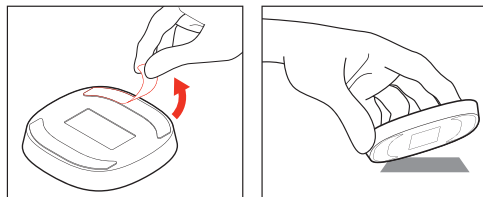
Included:  
Verizon Qi Wireless Charging Pad  
5V Power Adapter

Specifications:  
Input: 5V / 1.8A  
Output: 5V, 1A

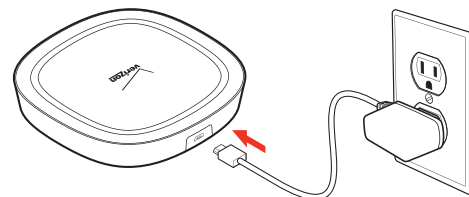
ICXXXX



- 1** Remove protective film from base. Place charger on a dry, clean, flat, smooth surface. It will adhere immediately without any pressure needed. To remove or reposition, pull up one corner slowly and gently.

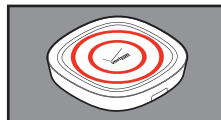
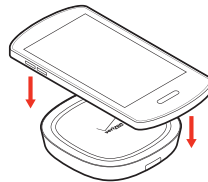


- 2** Power-up the Verizon Qi Wireless Charging Pad by inserting the included Micro-USB power cord into the power port\*.



\* Use the included power supply for fastest charging rate. Using a power supply rated under 1.8A will cause the phone to charge slower, indicated by a blinking red LED

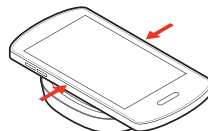
- 3** Place your Qi™ compatible device on the charging pad to begin charging.



- 4** To find your devices charging spot, keep your device centered on the pad horizontally.

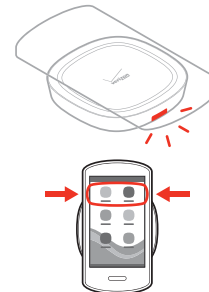
Now move your device up or down slowly until your device starts charging.

Note: If your device does not start charging, continue to move your device slowly up or down, stopping for 2 seconds every ¼ inch.

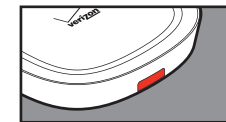


When the red light appears on the charging pad, your device should be charging.

To help achieve proper charging placement next time, make note of buttons or home screen features in relation to the charging pad surface.



- 5** While in Standby mode, the LED is OFF. Solid red LED indicates Verizon Qi Wireless Charging Pad is delivering full power.



LED indicator light

Charging  
Standby

If the red LED is on but no power is being received by the device, there may be a metal object near the coils. Pick up the device and remove foreign objects and place device back on the Verizon Qi Wireless Charging Pad. This is a safety feature and normal operation.

### CARE AND MAINTENANCE (General)

Keep Device Dry. Do NOT expose the device to liquids. If device gets wet, immediately unplug it and allow it to dry.  
Do not disassemble or attempt repair.  
Do not store the device in high or low temperatures.

### CARE AND MAINTENANCE (Sticky Suction)

To clean the charging pad base, use soft, damp cloth or scotch tape. Do NOT use solvents, alcohol or cleaners.

### ⚠CAUTIONS⚠

The Verizon Qi Wireless Charging Pad works with Qi Wireless Charging compatible smartphones and devices. The charging unit should only be used at normal indoor room conditions.  
Place charger on a hard flat surface.  
Use the supplied 5V 1.8A power adapter included with the Verizon Qi Wireless Charging Pad.  
The Verizon Qi Wireless Charging Pad and your smartphone/device may become warm during charging.  
Avoid direct contact with highly flammable materials.  
Avoid contact with delicate furniture finishes.

### FCC Information

This equipment has been tested and found to comply with the limits for a Class B digital device, pursuant to Part 15 of the FCC Rules. These limits are designed to provide reasonable protection against harmful interference in a residential installation. This equipment generates, uses and can radiate radio frequency energy and, if not installed and used in accordance with the instructions, may cause harmful interference to radio communications. However, there is no guarantee that interference will not occur in a particular installation.

If this equipment does cause harmful interference to radio or television reception, which can be determined by turning the equipment off and on, the user is encouraged to try to correct the interference by one or more of the following measures:

- Reorient or relocate the receiving antenna.
- Increase the separation between the equipment and receiver.
- Connect the equipment into an outlet on a circuit different from that to which the receiver is connected.
- Consult the dealer or an experienced radio/TV technician for help.

This device complies with Part 15 of the FCC Rules [and with RSS-210 of Industry Canada].

Operation is subject to the following two conditions:

1. This device may not cause harmful interference.
2. This device must accept any interference received, including interference that may cause undesired operation.

To comply with FCC and other RF exposure requirements, please maintain a distance of 20cm between the charger and your body when in use.

This transmitter must not be co-located or operating in conjunction with any other antenna or transmitter.

Changes or modifications made to this equipment not expressly approved by the manufacturer may void the FCC authorization to operate this equipment.

FCC ID: SZQ-T130