



beebop

WIRELESS HEADPHONES

USER GUIDE

Beebop Wireless Headphones

Wireless range up to 25 feet

What's in the box?

(1) Beebop Wireless Headphones

(1) USB Charging Cable

(1) Quick Start Guide

Basics

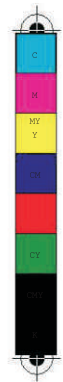
- Hold down the PHONE button to turn the device on/off
- To pair your Beebop wirelessly, look for "OrigAudio_HP"
- To charge your Beebop, connect your USB charging Cable into a wall-adaptor as if you are charging your phone

Button Features and Definitions

- Press the PHONE button to play or pause music.
 - Press the UP button to restart your current song or to return to your previous song.
 - Press the DOWN button to skip to the next song.
 - Hold the UP button to increase volume. You will hear a beeping noise when you have reached max volume.
- RETURN to the previous song
- Hold the DOWN button to decrease volume.

To Use During a Phonecall:

- Use your phone to dial a number as usual. To start a call with the last dialed number, tap the PHONE button twice.
- To answer a call with the Beebop, press the PHONE button. Use the UP or DOWN button to change volume settings.
- To end a call with the Beebop, press the PHONE button.



warn

This device complies with part 15 of the FCC Rules. Operation is subject to the following two conditions: (1) This device may not cause harmful interference, and (2) this device must accept any interference received, including interference that may cause undesired operation.

Any Changes or modifications not expressly approved by the party responsible for compliance could void the user's authority to operate the equipment.

Note: This equipment has been tested and found to comply with the limits for a Class B

digital device, pursuant to part 15 of the FCC Rules. These limits are designed to provide reasonable protection against harmful interference in a residential installation. This equipment generates uses and can radiate radio frequency energy and, if not installed and used in accordance with the instructions, may cause harmful interference to radio communications. However, there is no guarantee that interference will not occur in a particular installation. If this equipment does cause harmful interference to radio or television reception, which can be determined by turning the equipment off and

on, the user is encouraged to try to correct the interference by one or more of the following measures:

-Reorient or relocate the receiving antenna.

-Increase the separation between the equipment and receiver.

-Connect the equipment into an outlet on a circuit different from that to which the receiver is connected.

-Consult the dealer or an experienced radio/TV technician for help.