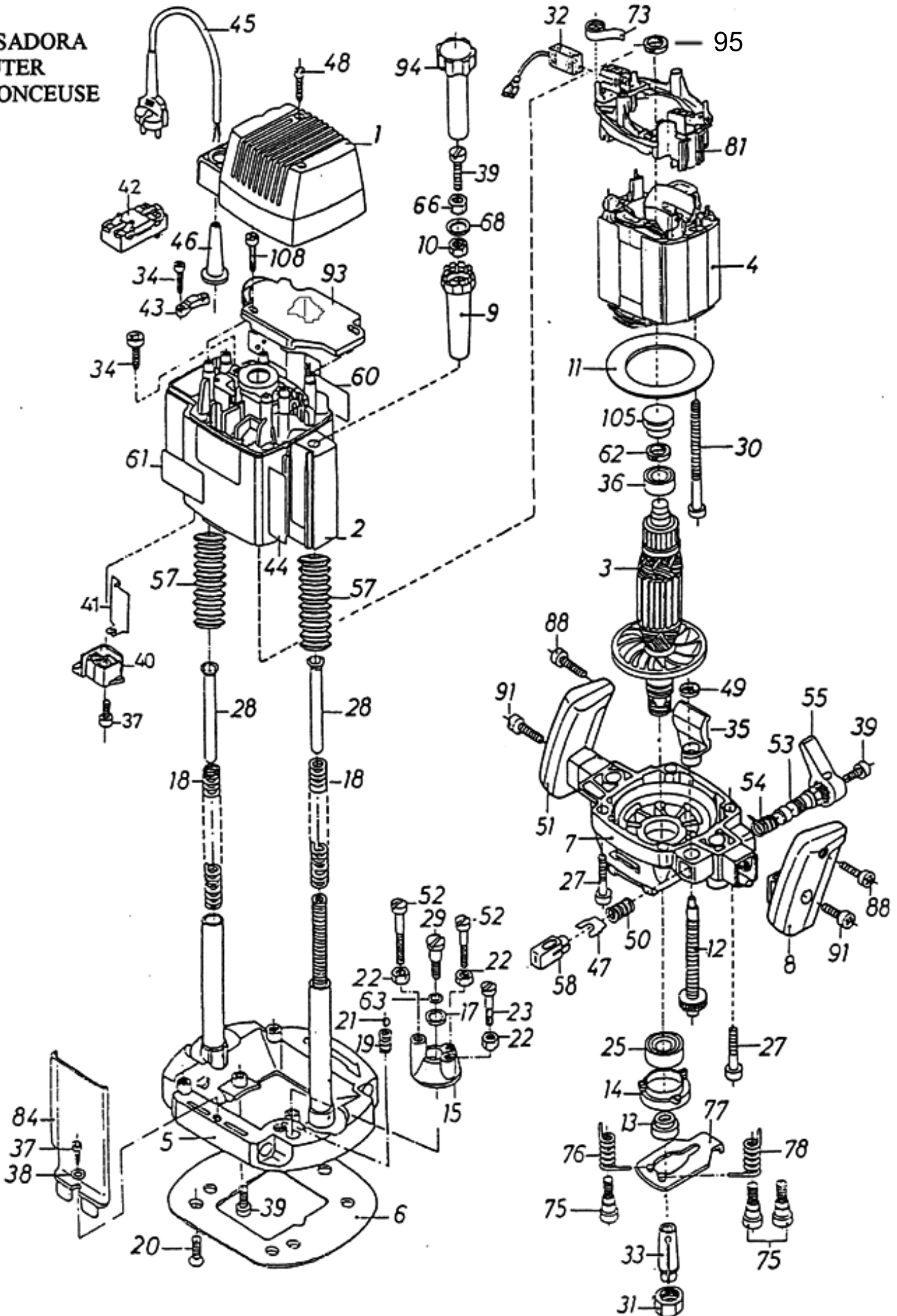


VERSION : V-3-2-1-0

FRESADORA  
ROUTER  
DEFONCEUSE



## LISTA DE RECAMBIOS / LISTE DE PIECES DETACHÉES / SPARE PART LIST

VERSION:3-2-1-0

POS.	CODIGO	VERS	DENOMINACION	DESCRIPTION	DESCRIPTION
1	13603.9163		Casquete cubierta motor negra	Couvercle carcasse noire	Black motor housing cap
2	13603.9163		Cubierta motor negro	Carcasse moteur black	Black top motor housing
3A	13603.9031	V-2-1-0	Inducido 120V	Induit 120V	Armature 120V
3B	13603.9033	V-2-1-0	Inducido 230V	Induit 230V	Armature 230V
3C	13603.9131	V-3	Inducido 120V	Induit 120V	Armature 120V
3D	13603.9132	V-3	Inducido 120V Con eje largo	Induit 120V	Armature 120V With longer shaft
3E	13603.9133	V-3	Inducido 230V	Induit 230V	Armature 230V
4A	13603.9021		Estator 120V	Stator 120V	Field 120V
4B	13603.9023		Estator 230V	Stator 230V	Field 230V
5	13603.9751		Base	Base	Base
6	13602.5531		Placa apoyo	Plaque base	Base plate
7A	13603.1081	V-3-2-1	Plato	Plateau moteur	Bottom motor housing
7B	13602.1081	V-0	Plato	Plateau moteur	Bottom motor housing
8	13602.5641		Puño mano derecha	Poignée main droite	Right hand grip
9A	13603.5631	V-3-2-1	Pomo ajuste fino	Poignée ajustage fin	Micro-adjustment Knob.
9B	13602.5631	V-0	Pomo ajuste fino	Poignée ajustage fin	Micro-adjustment Knob.
10	86020.1100		Tuerca M10 DIN 934	Ecrou M10 DIN 934	Nut M10 DIN 934
11A	13603.2611	V-3-2	Guía de aire	Guide d'air	Air guide
11B	13603.2021	V-1-0	Camisa estator	Carcasse stator	Field housing
12	13603.6131		Tornillo tope	Vis d'arrêt	Stop rod
13	13602.1521		Anillo rodamiento	Ecrou roulement	Bearing shaft nut
14	13602.1311		Tapa rodamiento	Plaque rétention roulement	Bearing retention plate
15A	13603.9291	V-3-2-1	Tope retención	Tourelle réglable	Turret
15B	13602.5651	V-0	Tope retención	Tourelle réglable	Turret
17	87080.0611		Arandela Ø6x11	Rondelle Ø6x11	Washer Ø6x11
18	75700.1051		Muelle	Ressort	Spring
19	75700.0351		Muelle	Ressort	Spring
20	84760.5248		Tornillo M4x8 DIN965	Vis M4x8 DIN965	Screw M4x8 DIN965
21	71390.0233		Bola 6 DIN5401	Bille 6 DIN5401	Steel ball 6 mm DIN5401
22	86020.1050		Tuerca M5 DIN934	Ecrou M5 DIN934	Locking nut M5 DIN934
23	84200.9291		Tornillo M5x18 DIN912	Vis M5x18 DIN912	Screw M5x18 DIN912
25	71200.0526		Rodamiento 6005-2Z-TN9	Roulement 6005-2Z-TN9	Bearing 6005-2Z-TN9
27	84481.0130		Tornillo Ø8.5 TP 5x35 PZ	Vis Ø8.5 TP 5x35 PZ	Screw Ø8.5 TP 5x35 PZ
28	88301.0541		Remache 11x0.4x75 DIN7340MS	Rivet 11x0.4x75 DIN7340MS	Rivet 11x0.4x75 DIN7340MS
29	84410.5283		Tornillo mixto	Vis mixte	Shoulder screw
30	84480.0063		Tornillo Ø8.5 TP 5x80 PZ	Vis Ø8.5 TP 5x80 PZ	Screw Ø8.5 TP 5x80 PZ
31	13603.7411		Tuerca pinza	Ecrou pince	Collet nut
32	13413.9073		Escobilla	Balai	Brush
33A	13602.7431		Pinza 1/2"	Pince 1/2"	1/2" Collet
33B	13602.7432		Pinza 12mm.	Pince 12mm.	12mm. Collet
33C	13602.7433		Pinza 8mm.	Pince 8mm.	8mm. Collet
33D	13602.7434		Pinza 6mm.	Pince 6mm.	6mm. Collet
33E	13602.7435		Pinza 1/4"	Pince 1/4"	1/4" Collet
34	84480.0050		Tornillo Ø7.5 TP 4x22 PZ	Vis Ø7.5 TP 4x22 PZ	Screw Ø7.5 TP 4x22 PZ
35	13603.5791	V-3-2-1	Visor de ajuste	Viseur d'ajustage	Adjustment finder
36	71202.0107		Rodamiento 6201-ZZ-C3	Roulement 6201-ZZ-C3	Top bearing 6201-ZZ-C3
37	84430.5248		Tornillo Ø7 M4x8 PZ	Vis Ø7 M4x8 PZ	Screw Ø7 M4x8 PZ
38	87301.1040		Arandela A4 DIN137	Rondelle A4 DIN137	Washer A4 DIN137
39	84600.1283		Tornillo M5x10 DIN85	Vis M5x10 DIN85	Screw M5x10 DIN85
40	13602.4111		Mando interruptor	Commande interrupteur	Power switch knob
41	13602.4201		Palanca	Levier	Switch plate
42	76325.7001		Interruptor 120 & 230V.	Interrupteur 120 & 230V.	120 & 230V. Switch
43	11460.4231		Brida cable	Bride cable	Cable clamp.
44	79313.0009		Escala graduada	Echelle graduée	Stop rod scale
45A	13410.4001		Cable red CEE	Cable prise courant CEE	EEC power cord set
45B	76766.0600		Cable red USA	Cable prise courant USA	USA power cord set
45C	76767.3100		Cable red UK	Cable prise courant UK	UK power cord
45D	76758.0802		Cable red Australia	Cable prise courant Austral.	Australian Power cord
46	13413.4181		Manguito	Manchon	Power cord boot
47	13602.4911	V-3-2-1	Lengüeta retención	Goujon rétention	Retaining wedge
48	84480.0054		Tornillo 4x30TP	Vis4x30TP	Screw 4x30 TP
49	87490.0040	V-3-2-1	Aranlock	Aranlock	Aranlock
50	75700.1200		Muelle	Ressort	Spring
51	13602.5632		Puño mano izquierda	Poignée main gauche	Left hand grip
52	84200.9297		Tornillo M5x30 DIN912	Vis M5x30 DIN912	Screw M5x30 DIN912
53	13602.6241		Tornillo fijación	Vis fixation	Locking screw
54	75702.1360		Muelle torsión	Ressort torsion	Torsion spring
55	13602.1231		Palanca	Levier blocage	Plunge lock lever
57	13603.1551		Fuelle protector	Soufflet protection	Flexible cover
58A	13602.4021	V-3-2-1	Botón regulador	Bouton poussoir	Stop rod button
58B	13602.5611	V-0	Botón regulador	Bouton poussoir	Stop rod button
62	74210.3225		Anillo junta OR	Joint OR	O-ring
63	74210.0620		Anillo junta OR	Joint OR	O-ring
66	86002.2100		Tuerca M10 DIN 439	Ecrou M10 DIN 439	Nut M10 DIN 439
68	74210.1035		Anillo junta OR	Joint OR	O-ring
73	13413.2251		Muelle escobilla	Ressort balai	Brush spring
75	13602.6202		Tornillo combinado	Vis combiné	Combination screw
76	75702.6500		Resorte	Ressort	Spring
77	13602.5221		Plancha bloqueo	Levier blocage arbre	Shaft lock
78	75702.6501		Resorte	Ressort	Spring
81A	13415.9112	V-3-2	Portaescobilla	Porte balai	Brush holder
81B	13410.9111	V-1-0	Portaescobilla	Porte balai	Brush holder
84	13602.1211		Protección transparente	Protection transparente	Chip guard
88	84480.0028		Tornillo TP 3.5x16 PZ	Vis TP 3.5x16 PZ	Screw TP 3.5x16 PZ
91	84430.5916		Tornillo Ø10 M6x35 PZ	Vis Ø10 M6x35 PZ	Screw Ø10 M6x35 PZ
93A	13603.9231	V-2-1-0	Regul.tacométrico 120V	Regulateur tachymétr.120V	Speed control module 120V
93B	13603.9233	V-2-1-0	Regul.tacométrico 230V	Regulateur tachymétr.230V	Speed control module 230V
93C	76348.8016	V-3	Regul.tacométrico 120V	Regulateur tachymétr.120V	Speed control module 120V
93D	76348.7116	V-3	Regul.tacométrico 230V	Regulateur tachymétr.230V	Speed control module 230V
94	13603.5632		Pomo (tapa)	Couvercle poignée	Top knob
95	87490.0060		Aranlock	Safety washer	Rondelle securite
105	76388.9161		Anillo tacométrico	Anneau tachometryque	Tachometer ring
108	84481.0085		Tornillo 4,5x20 TP	Vis 4,5x20 TP	Screw 4.5x20 TP

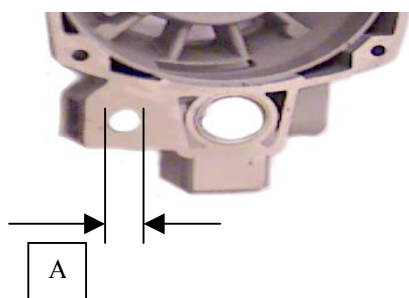
# FREUD

# FT2000VCE

VERSION 3-2-1-0

PLATO/BOTTOM MOTOR HOUSING/PLATEAU

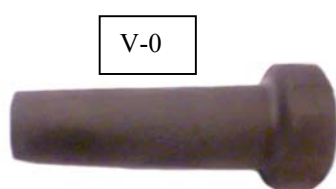
POS/ITEM 7



VER	COD.	A
V-3-2-1	13603.1081	11.2mm
V-0	13602.1081	9mm

POMO AJUSTE FINO/MICRO ADJUSTMENT KNOB/POIGNEE

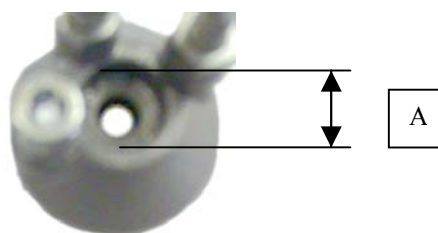
POS/ITEM 9



VER	COD.
V-3-2-1	13603.5631
V-0	13602.5631

TOPE RETENCION/TURRET/TOURELLE REGLABLE

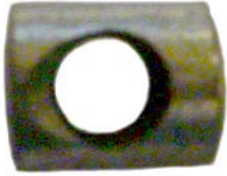
POS/ITEM 15



VERS	COD.	A
V-3-2-1	13603.9291	10.5mm
V-0	13602.5651	12.5mm

**BOTON REGULADOR/STOP ROD BUTTON/BOUTON POUSSOIR  
POS/ITEM 58**

V-0



V-3-2-1



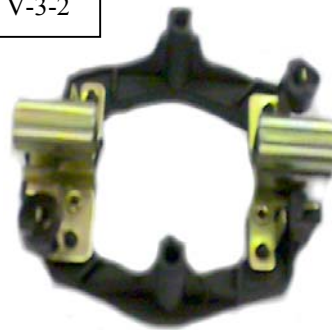
VER	COD.
V-3-2-1	13602.4021
V-0	13602.5611

**PORTAESCOBILLAS/BRUSH HOLDER/PORTEBALAIS  
POS/ITEM 81**

V-1-0



V-3-2



VER	COD.
V-3-2	13415.9112
V-1-0	13410.9111