

SETUP MODE

HOW TO ADD A REMOTE CONTROL (only available for Remote Control Electronic Deadbolt)

Steps are as follows:

1. Press and hold [SET] button for over 2 seconds. The Red LED will light up and beep twice.


You are now under setup mode.

2. Enter 123456 (or current programming code) and then press button  .

Enter [20] and press button  .

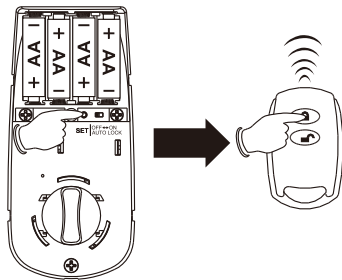
Press any button on the remote control and press button  .

The Red LED will light up for 10 seconds. The lockset will have the new remote control set.

(If a number of remote controls are to be added at the same time, press any button of the remote control that you want to add and press button  on the keypad, and repeat above step prior to the indicator light timing out 10 seconds after the last press of a keypad button.)


Note:




- 1.The lockset will go back to the standby status if no button is pressed in 10 seconds after accessing setup mode.
- 2.Please purchase a remote control (produced by our company) from an authorized retailer if you want to have more than one remote control.
- 3.Remote control capacity: 10 sets maximum.



HOW TO ADD A SINGLE-USE USER CODE / PROXIMITY CARD / REMOTE CONTROL

Steps are as follows:

1. Press and hold [SET] button for over 2 seconds. The Red LED will light up and beep twice.
You are now under setup mode.
2. Enter 123456 (or current programming code) and then press button  .
3. We recommend to turn on auto-lock mode according to [page 38](#) before following the below steps to enable single-use user code/ remote control.

single-use	Follow the below steps.				
User code	Enter [21]	Press button 	Enter user codes (4 digits)	Press button 	User codes can be stored to 5 sets
Remote control			Press any button on the remote control		Remote controls can be stored to 5 sets
Proximity card					Touch the inductive zone

Note:

1. The lockset will go back to the standby status if no button is pressed in 10 seconds after accessing setup mode.
2. Single-use user code capacity: 5 sets maximum.
3. Single-use remote control capacity: 5 sets maximum.
4. Single-use proximity card capacity: 5 sets maximum.
5. Single-entry user code/ single-entry user remote control/ single-entry proximity card is only allowed to work once and will become invalid after one-time use (entry).
6. Do not use your multiple-entry user code/ multiple-entry remote control/ multiple-entry proximity card to facilitate single-entry operation, or your user code/ remote control/ proximity card will become invalid after only one-time use (entry).

SETUP MODE

HOW TO DELETE AN INDIVIDUAL EXISTING USER CODE

Steps are as follows:

1. Press and hold [SET] button for over 2 seconds. The Red LED will light up and beep twice.


You are now under setup mode.

2. Enter 123456 (or current programming code) and then press button .

Enter [30] and press button .

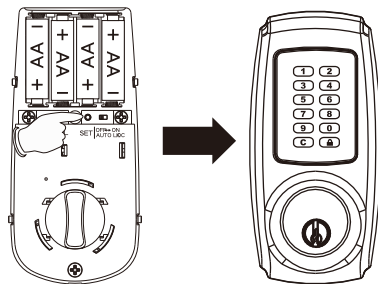
Enter existing user code (that you wish to delete) and press button .

The Red LED will light up for 10 seconds. The lockset will delete the existing user code that you do not want.

(If a number of user codes are to be deleted at the same time, enter each user code to be deleted and press  on the keypad, and repeat above step prior to the indicator light timing out 10 seconds after the last press of a keypad button.)

Note:

1. The lockset will go back to the standby status if no button is pressed in 10 seconds after accessing setup mode.



HOW TO DELETE AN INDIVIDUAL EXISTING PROXIMITY CARD

(only available for Proximity Card Electronic Deadbolt)

Steps are as follows:

1. Press and hold [SET] button for over 2 seconds. The Red LED will light up and beep twice.

You are now under setup mode.

2. Enter 123456 (or current programming code) and then press button  .

Enter [30] and press button  .

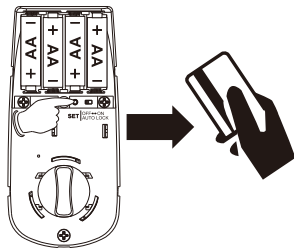
Put the card that you wish to delete to touch the inductive zone.

The Red LED will light up for 10 seconds. The lockset will delete the existing card that you do not want.

(If a number of cards are to be deleted at the same time, use every card to touch the inductive zone consecutively prior to the indicator light timing out 10 seconds after the last press of a keypad button.)

Note:

1. The lockset will go back to the standby status if no button is pressed in 10 seconds after accessing setup mode.
2. If any card is lost, for your safety, please delete all cards and re-add current cards excluding the lost one.



HOW TO DELETE AN INDIVIDUAL EXISTING REMOTE CONTROL

(only available for Remote Control Electronic Deadbolt)


Steps are as follows:

1. Press and hold [SET] button for over 2 seconds.

The Red LED will light up and beep twice. You are now under setup mode.


2. Enter 123456 (or current programming code) and then press button  .

Enter [30] and press button  .

Press any button on the remote control (that you wish to delete) and press button  .

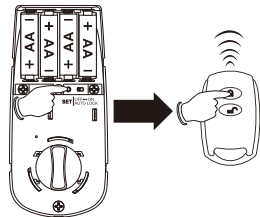
The Red LED will light up for 10 seconds.

The lockset will delete the existing remote control that you do not want.

(If a number of remote controls are to be deleted at the same time, press any button of the remote control that you want to delete and press button  on the keypad, and repeat above step prior to the indicator light timing out 10 seconds after the last press of a keypad button.)

Note:

1. The lockset will go back to the standby status if no button is pressed in 10 seconds after accessing setup mode.
2. If any remote control is lost, for your safety, please delete all remote controls and re-add current remote controls excluding the lost one.



SETUP MODE

HOW TO DELETE ALL EXISTING USER CODES AT ONCE

Steps are as follows:

1. Press and hold [SET] button for over 2 seconds.

The Red LED will light up and beep twice. You are now under setup mode.

2. Enter 123456 (or current programming code) and then press button .

Enter [40] and press button .

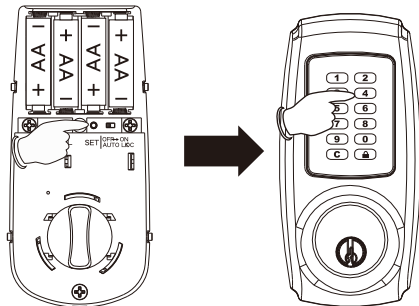
Press and hold  button until a beep is heard.

The Red LED will light up for 10 seconds.

The lockset will delete all existing user codes.

Note:

1. The lockset will go back to the standby status if no button is pressed in 10 seconds after accessing setup mode.



SETUP MODE

HOW TO DELETE ALL EXISTING PROXIMITY CARDS / REMOTE CONTROLS AT ONCE

(only available for Proximity Card Electronic Deadbolt / Remote Control Electronic Deadbolt)

Steps are as follows:

1. Press and hold [SET] button for over 2 seconds.

The Red LED will light up and beep twice. You are now under setup mode.

2. Enter 123456 (or current programming code) and then press button  .

Enter [41] and press button  .

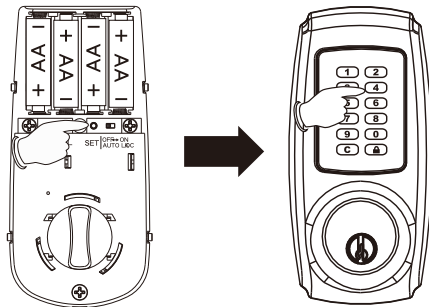
Press and hold  button until a beep is heard.

The Red LED will light up for 10 seconds.

The lockset will delete all existing cards and remote controls.

Note:

1. The lockset will go back to the standby status if no button is pressed in 10 seconds after accessing setup mode.
2. If any card / remote control is lost, for your safety, please delete all cards/ remote controls and re-add current cards / remote controls excluding the lost one.



SETUP MODE

HOW TO DISABLE ALL EXISTING CODES/ CARDS/ REMOTE CONTROLS (VACATION MODE)

Steps are as follows:

1. Press and hold [SET] button for over 2 seconds.

The Red LED will light up and beep twice.

You are now under setup mode.

2. Enter 123456 (or current programming code) and then press button  .

Enter [50] and press button  .

3. Enter [0] and press button  .

The Red LED will light up for 10 seconds. The lockset will turn on vacation mode.

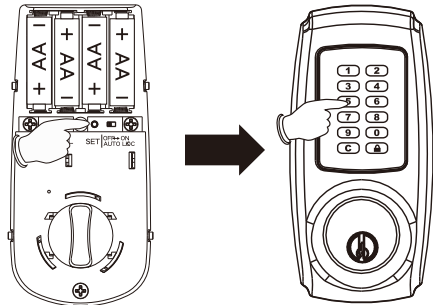
4. Enter [1] and press button  .

The Red LED will light up for 10 seconds. The lockset will turn off vacation mode.

(default vacation mode is off)

Note:

1. The lockset will go back to the standby status if no button is pressed in 10 seconds after accessing setup mode.
2. Vacation mode is used to disable all user codes at the keypad. If a valid user code is entered while the lock is in vacation mode, the lock will not be unlocked. If you will be away from your home for a period of, it is a good idea to use vacation mode to prevent repeated access attempts.



HOW TO DISABLE BUTTON SOUND (MUTE MODE)


Steps are as follows:

1. Press and hold [SET] button for over 2 seconds.

The Red LED will light up and beep twice. You are now under setup mode.

2. Enter 123456 (or current programming code) and then press button  .

Enter [60] and press button  .

3. Enter [0] and press button  .

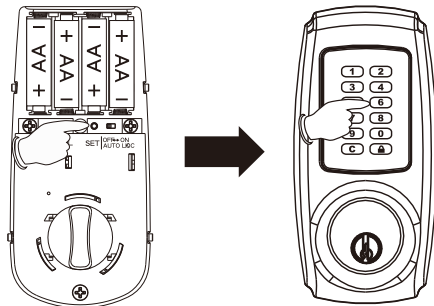
The Red LED will light up for 10 seconds. The lockset will turn on mute mode.

4. Enter [1] and press button  .

The Red LED will light up for 10 seconds. The lockset will turn off mute mode.
(default mute mode is off)

Note:

1. The lockset will go back to the standby status if no button is pressed in 10 seconds after accessing setup mode.



HOW TO ENABLE AUTO-LOCK MODE

Steps are as follows:

1. Press and hold [SET] button for over 2 seconds.

The Red LED will light up and beep twice. You are now under setup mode.

2. Enter 123456 (or current programming code) and then press button  .

Enter [80] and press button  .

3. Enter [0] and press button  .


The Red LED will light up for 10 seconds. The lockset will turn on auto-lock mode.

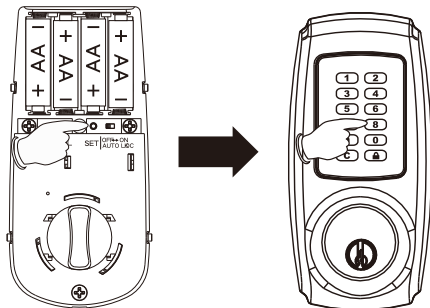
4. Enter [1] and press button  .

The Red LED will light up for 10 seconds.

The lockset will turn off auto-lock mode. (default auto-lock mode is off)

Note:

- 1.The lockset will go back to the standby status if no button is pressed in 10 seconds after accessing setup mode.
- 2.The lockset will auto-lock in 10 seconds (default value) without flashing and beeping after unlocking if you turn on auto-lock mode.
- 3.The lockset can still be locked by pressing button  manually even if you turn on auto-lock mode.



HOW TO SETUP AUTO-LOCK TIME DELAY


Steps are as follows:

1. Press and hold [SET] button for over 2 seconds.

The Red LED will light up and beep twice. You are now under setup mode.

2. Enter 123456 (or current programming code) and then press button .

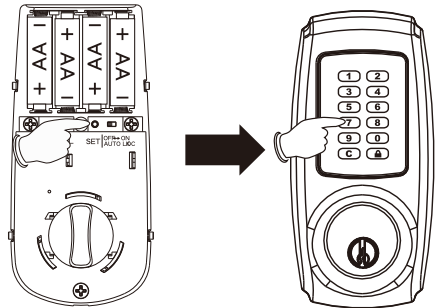
Enter [70] and press button .

Enter the seconds for delay time of auto-locking (10 to 90) and press button .

The Red LED will light up for 10 seconds. The lockset will setup auto-lock time delay.

Note:

1. The lockset will go back to the standby status if no button is pressed in 10 seconds after accessing setup mode.
2. The lockset will flash and beep three times if the seconds for delay time of auto-locking is not within 10 to 90 seconds.
3. Default auto-lock time delay is 10 seconds.



HOW TO ENABLE DOUBLE AUTHORIZATION MODE

(only available for Proximity Card Electronic Deadbolt/ Remote Control Electronic Deadbolt)

Steps are as follows:

1. Press and hold [SET] button for over 2 seconds. The Red LED will light up and beep twice.

You are now under setup mode.

2. Enter 123456 (or current programming code) and then press button .

Enter [99] and press button .

3. Enter [0] and press button .

The Red LED will light up for 10 seconds. The lockset will turn on double authorization mode.

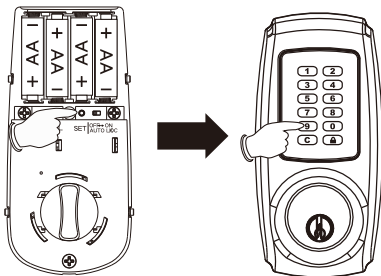
(When the double authorization mode is turned on, both user code and card, or both user code and remote control, must be authenticated to unlock the lockset)

4. Enter [1] and press button .

The Red LED will light up for 10 seconds. The lockset will turn off double authorization mode. (default double authorization mode is off)

Note:

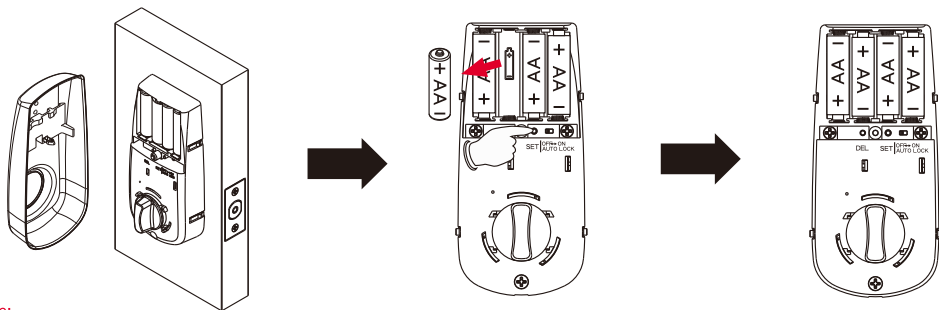
- 1.The lockset will go back to the standby status if no button is pressed in 10 seconds after accessing setup mode.
- 2.Please make sure that both user code and card, or both user code and remote control, are stored in the lockset before you turn on double authorization mode.



HOW TO RESTORE FACTORY SETTING

Steps are as follows:

1. Remove one battery from the battery pack.
2. Press and hold [SET] button and put the battery back. Keep holding [SET] button until a long beep and a short beep are heard. All functions will be restored back to factory setting.



Note:

For your safety, restore factory setting after installing the lock on the door.

All existing user codes/ cards/ remote controls will be deleted.

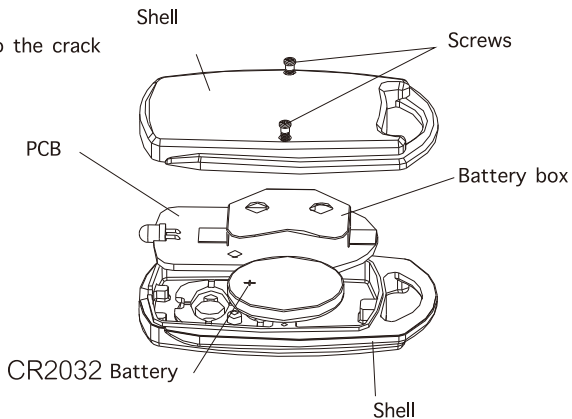
Lock will be restored to the pre-set programming code of 1-2-3-4-5-6.

Please change the programming code and add a new user code immediately before operating the lockset.

HOW TO REPLACE A BATTERY OF REMOTE CONTROL

Steps are as follows:

1. Loose two screws before opening the bottom shell.
2. Take the PCB out.
3. Push the battery out by inserting the tool into the crack between the PCB and the electrode terminal.
4. Push into the new battery.
5. Replace the PCB.
6. Place the bottom shell back and tighten the screws.



HOW TO LOCK manually

Keypad: Press button  to lock the door.

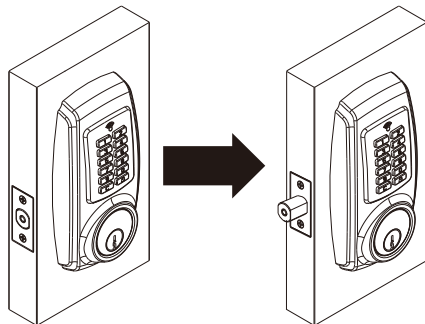
Remote control: Press lock button to lock the door as shown.

(only available for Remote Control Electronic Deadbolt)



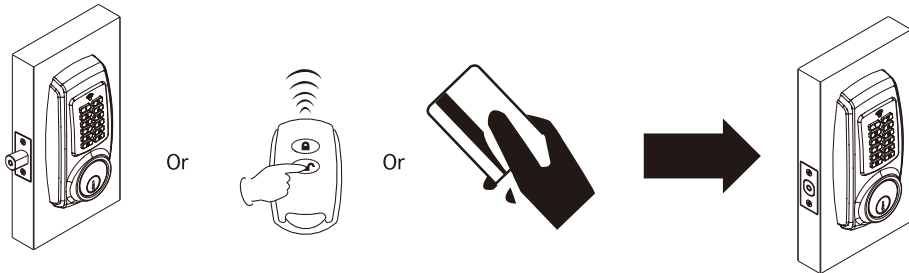
HOW TO LOCK automatically

1. Auto-lock mode should be turned on and auto-lock time delay should be also set up.
2. The lockset will be auto-locked in few seconds (default 10 seconds or the time you entered) after unlocking by using codes, card, or remote control.



HOW TO UNLOCK


1. Enter a valid code, touch the inductive zone with the card , or press unlock button on the remote control to unlock the lockset.
2. When the double authorization mode is turned on, both user code and card, or both user code and remote control, must be authenticated to unlock the lockset.

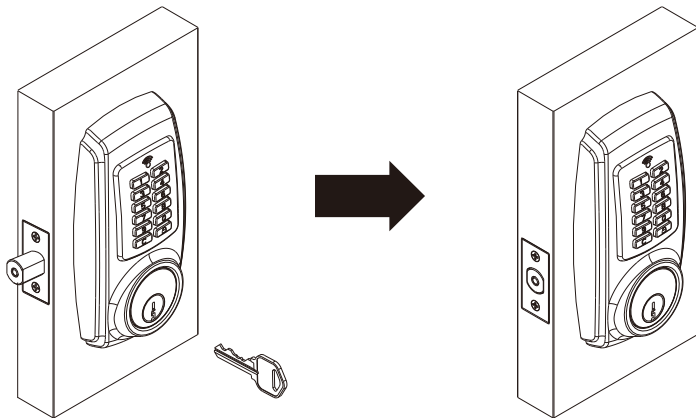


Note:


- 1.If you cannot unlock the lockset by using card, especially the lockset is mounted outside or under the sun, please wakeup the lockset by pressing button **C** on the keypad first, then unlock the lockset by using card.
- 2.When you enter codes, and the keypad backlight will also be activated automatically under low light environment.
- 3.Please press button **C** to clear previous codes and re-enter codes if the previous codes are incorrect.
- 4.If you do not press button **C** to clear previous incorrect codes, the red LED will light up and you have to wait until the red LED lights off, then the lockset is allowed to re-enter codes.

SAFE MODE


1. The keypad will be automatically deactivated for 1 minute after 4 wrong attempts.
2. Wrong attempts will not be counted when you press button  to clear previous incorrect codes before the red LED lights up.
2. The deadbolt can be locked or unlocked by a valid traditional key under security.



TROUBLESHOOTING GUIDELINE

QUESTIONS	ANSWERS
The lockset did not operate correctly after installation.	<ol style="list-style-type: none">1. Check center of strike hole for alignment with latch hole on the door to ensure free movement for the deadbolt.2. Make sure the tailpiece is properly inserted (in the horizontal position) in the latch.3. Do [AUTOMATIC -BOLT DIRECTION DETERMINATION].
Feel a bump while turning of the motor?	<ol style="list-style-type: none">1. Please rotate the thumbturn back and forth a few times.
Feel a bump while turning the thumbturn or the key?	<ol style="list-style-type: none">1. Do not lock (or unlock) the door consecutively. This will cause a bump.2. If feeling a bump, press  button while the door is unlocked to allow the motor to reposition.


TROUBLESHOOTING GUIDELINE

QUESTIONS	ANSWERS
Keypad does not respond at all.	<ol style="list-style-type: none">1. Check to see if the batteries are well-installed.2. Check to see if the Yellow LED light is flashing or not. It means "low battery" if the light keeps flashing.3. Make sure the cable is well-connected to the port.
Programming code cannot be changed ?	<ol style="list-style-type: none">1. Please complete the "HOW TO CHANGE PROGRAMMING CODE" process by inputting codes within 10 seconds.2. Please make sure you have entered the new programming code correctly or go back to the factory setting and reset the programming code again.
I cannot delete all user codes.	<ol style="list-style-type: none">1. Make sure all code inputting processes should be completed within 10 seconds.2. Make sure you have entered the correct programming code.3.  button should be held over 3 seconds.


TROUBLESHOOTING GUIDELINE

QUESTIONS	ANSWERS
I cannot add a new user code.	<ol style="list-style-type: none">1. Make sure all code inputting processes should be completed within 10 seconds.2. Make sure you have entered the correct programming code.3. The new user code will not be accepted if 10 sets of user codes are already stored in the memory.
What happens if the lockset is not able to unlock by the keypad?	<ol style="list-style-type: none">1. Make sure you have entered the correct user code.2. Check to see if the Yellow LED light is flashing or not. It means "low battery" if the light keeps flashing.3. Please make sure the position of strike plate is installed correctly if you see the latch is jammed.
I am unable to reset the lockset.	<ol style="list-style-type: none">1. Please refer to "HOW TO RESTORE FACTORY SETTING" section and make sure all steps are followed correctly.2. Check to see if the Yellow LED light is flashing or not. It means "low battery" if the light keeps flashing.

TROUBLESHOOTING GUIDELINE

QUESTIONS	ANSWERS
Red LED light is still on after setting is completed?	<ol style="list-style-type: none"> 1. Please make sure if [SET] button is jammed. 2. Please re-install the batteries.
"Auto lock" does not function.	<ol style="list-style-type: none"> 1. Please make sure turn on auto-lock mode. 2. Check to see if the Yellow LED light is flashing or not. It means "low battery" if the light keeps flashing.
Yellow LED light keeps flashing.	The battery is getting low, please reinstall all new batteries for best performance (AA size Alkaline batteries are only allowed).
What should I do if I input the wrong code?	1. Press button  once and continue to input code according to regular procedures.
How to operate this lockset under a low-light environment?	1. Press any button on the keypad to initiate LED backlight.
The card or the remote control is lost.	1. For your safety, please delete all cards/ remote controls and re-add current cards/ remote controls excluding the lost one.

TROUBLESHOOTING GUIDELINE

QUESTIONS	ANSWERS
Need more remote controls.	1.Please purchase the remote control (produced by our company) from an authorized retailer. Other remote controls maybe not compatible with this lockset.
Need more proximity cards.	1.Proximity card we offer is the latest Radio Frequency Identification (RFID) technology, compatible with standard Mifare -13.56 MHz. 2.You can use any card compatible with standard Mifare -13.56 MHz or purchase new cards from an authorized retailer.
What should I do if the lockset cannot be unlocked by using card?	1.Make sure this card is stored in the lockset. 2.Please press button  first then use card to unlock. 3. Please touch the inductive zone with the card to unlock.

If the lock appears to be damaged or does not function properly, please contact your local provider for more help.

DECLARATIONS AND SAFETY STATEMENTS

Federal Communications Commission Statement

This device complies with Part 15 of the FCC. Operation is subject to the following two conditions:

- (1) this device may not cause harmful interference, and
- (2) this device must accept any interference received, including interference that may cause undesired operation.

Changes or modifications not expressly approved by the party responsible for compliance could void the user's authority to operate the equipment.

NOTE: This equipment has been tested and found to comply with the limits for a Class B digital device, pursuant to part 15 of the FCC Rules. These limits are designed to provide reasonable protection against harmful interference in a residential installation. This equipment generates, uses and can radiate radio frequency energy and, if not installed and used in accordance with the instructions, may cause harmful interference to radio communications. However, there is no guarantee that interference will not occur in a particular installation.

If this equipment does cause harmful interference to radio or television reception, which can be determined by turning the equipment off and on, the user is encouraged to try to correct the interference by one or more of the following measures:

- Reorient or relocate the receiving antenna.
- Increase the separation between the equipment and receiver.
- Connect the equipment into an outlet on a circuit different from that to which the receiver is connected.
- Consult the dealer or an experienced radio/TV technician for help.

IC Regulations

This Class B digital apparatus complies with Canadian ICES-003 .

Cet appareil numérique de la classe B est conforme à la norme NMB-003 du Canada.

This device complies with Industry Canada licence-exempt RSS-210 standard. Operation is subject to the following two conditions:

- (1) this device may not cause harmful interference, and
- (2) this device must accept any interference received, including interference that may cause undesired operation of the device.

SECURITY INSTRUCTION

1. Do not share the programming code with anyone else.
- 2.Keep a written copy of all valid user codes in a safe place.
(You may use the table below to record your information)
3. The memory capacity for user codes is 10 sets.
4. It is **STRONGLY** recommended changing all codes if any security information in the table is lost.

Programming code

Name	User code	Name	User code

