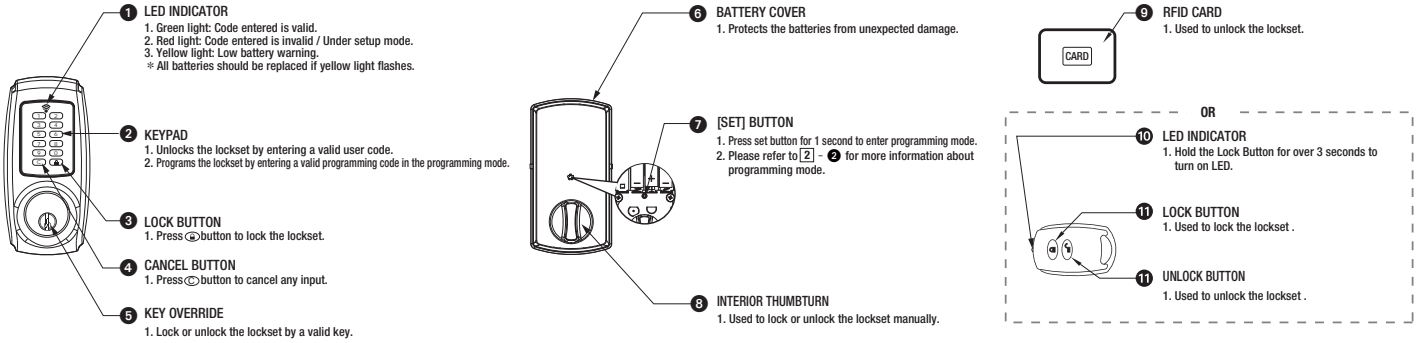


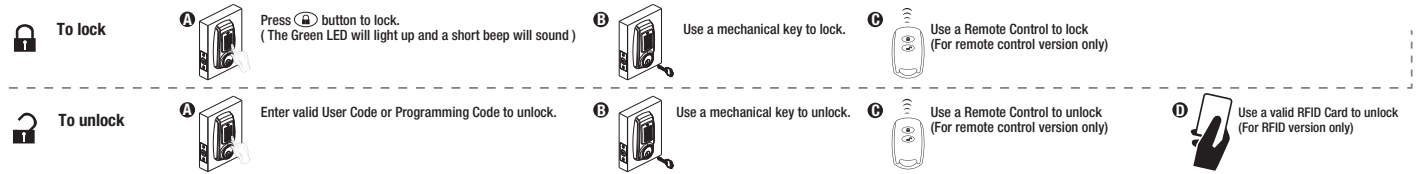
# USER GUIDE

## 1 OVERVIEW OF THE LOCKSET



## 2 HOW TO LOCK / UNLOCK / PROGRAM THE LOCKSET

### 1 HOW TO LOCK / UNLOCK THE LOCKSET



⚠ The screen is temporarily disabled after 4 consecutive incorrect entries.

### 2 HOW TO PROGRAM THE LOCKSET

#### BASIC SETTINGS

<b>Change Programming Code</b>	<ul style="list-style-type: none"> <li>Programming Code can be used to program or unlock the lockset.</li> <li>The default Programming Code is "123456".</li> </ul>	Press [SET] for 1 second. → Programming Code (6 digits) → [L] → 1 → 0 → [L] → New Programming Code (6 digits) → [L]	
<b>Add a User Code(S)</b>	<ul style="list-style-type: none"> <li>Add one or more User Codes / Card / Remote Control.</li> <li>User Code capacity: 10 sets (4-6 digits) / Card / Remote Control capacity : 10 sets.</li> </ul>	Press [SET] for 1 second. → Programming Code (6 digits) → [L] → 2 → 0 → [L] →	New User Code (4-6 digits) OR OR OR
<b>Delete Individual User / Single-use User Code(S)</b>	<ul style="list-style-type: none"> <li>Delete INDIVIDUAL User Code / Card / Remote Control.</li> </ul>	Press [SET] for 1 second. → Programming Code (6 digits) → [L] → 3 → 0 → [L] →	User Code (4-6 Digits) OR OR OR
<b>Delete ALL User Codes</b>	<ul style="list-style-type: none"> <li>Delete ALL User Codes at once.</li> </ul>	Press [SET] for 1 second. → Programming Code (6 digits) → [L] → 4 → 0 → [L] → [C]	Press and hold [C] ( for over 3 seconds )
<b>Delete All RFID Cards / Remote Controls At Once</b>	<ul style="list-style-type: none"> <li>Delete ALL RFID Cards / Remote Controls.</li> </ul>	Press [SET] for 1 second. → Programming Code (6 digits) → [L] → 4 → 1 → [L] → [C]	Press and hold [C] ( for over 3 seconds )

#### ADVANCED SETTINGS

<b>Add Single-use User Code(S) / Card / Remote Control</b>	<ul style="list-style-type: none"> <li>The Single-use User Code / Card / Remote Control can be used for only one successful entry and will be invalid when the lockset is locked again.</li> <li>The Auto-lock should be activated, so the door is locked when the single-use user leaves the building.</li> <li>Single-use User Code capacity: 5 sets (4 digits). / Card / Remote Control : 10 sets.</li> </ul>	Press [SET] for 1 second. → Programming Code (6 digits) → [L] → 2 → 1 → [L] →	Single-use User Code (4 digits) OR OR OR
<b>Vacation Mode</b>	<ul style="list-style-type: none"> <li>Enable Vacation Mode will temporarily disable ALL User Codes. Only Programming Code or mechanical key can open the lock.</li> </ul>	Press [SET] for 1 second. → Programming Code (6 digits) → [L] → 5 → 0 → [L] →	Turn On 1 → [L] Turn Off 0 → [L]
<b>Button Sound</b>	<ul style="list-style-type: none"> <li>Default Button Sound : on .</li> </ul>	Press [SET] for 1 second. → Programming Code (6 digits) → [L] → 6 → 0 → [L] →	Turn On 1 → [L] Turn Off 0 → [L]
<b>Auto-lock Mode</b>	<ul style="list-style-type: none"> <li>Default Auto-lock Mode : off .</li> </ul>	Press [SET] for 1 second. → Programming Code (6 digits) → [L] → 8 → 0 → [L] →	Turn On 1 → [L] Turn Off 0 → [L]
<b>Auto-lock Delay Timer</b>	<ul style="list-style-type: none"> <li>Default Auto-lock delay timer : 10 seconds.</li> <li>Auto-lock range : 10 – 99 seconds.</li> </ul>	Press [SET] for 1 second. → Programming Code (6 digits) → [L] → 7 → 0 → [L] →	Enter New Amount (10 - 99) → [L]
<b>Double Authorization Mode</b>	<ul style="list-style-type: none"> <li>When Double Authorization Mode is turned on, both User Code and RFID Card / Remote Control, must be authenticated to unlock the lockset.</li> </ul>	Press [SET] for 1 second. → Programming Code (6 digits) → [L] → 9 → 9 → [L] →	Turn On 1 → [L] Turn Off 0 → [L]

⚠ The lockset will exit the programming mode and resume to the stand-by status if no input is made in 10 seconds.  
 • 3 Beeps means something was entered incorrectly. Please redo the step again.

