



FUJI PHOTO FILM CO.,LTD.

26-30, NISHIAZABU 2-CHOME,

MINATO-KU, TOKYO 106, JAPAN

Telephone: (03) 3406-2934

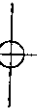
Facsimile : (03) 3406-9967

FCC ID : F5GSM-R1

Part 15 Sub.part B Class B Digital Device

Exhibit F

OWNER'S MANUAL

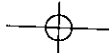


初校



IMAGE MEMORY CARD READER SM-R1

for Windows®98



FUJI PHOTO FILM CO., LTD.

28-30, Nishiazabu 2-chome, Minato-ku, Tokyo 106-8620, Japan

Printed on recycled paper.
Imprimé sur papier recyclé.
Gedruckt auf wiederverwertetem Papier.

BB00000-000(0)

FGS-00000

OWNER'S MANUAL

Thank you for purchasing this FUJIFILM product.
This manual explains how to use your FUJIFILM Image Memory Card Reader SM-R1 correctly.
Please follow the instructions carefully, and store this manual and the warranty in a safe place.

MODE D'EMPLOI

Nous vous remercions pour l'achat de notre produit FUJIFILM.
Ce manuel vous présente une description sur la manière d'utiliser correctement ce lecteur de carte de mémoire d'images FUJIFILM SM-R1. Nous vous recommandons de suivre soigneusement les instructions et de ranger ce manuel et la garantie dans un emplacement sûr.

BEDIENUNGSANLEITUNG

Vielen Dank für Ihren Ankauf dieses FUJIFILM Erzeugnisses.
Diese Anleitung erläutert wie das SM-R1 Lesegerät für Bildspeicherarten richtig verwendet wird.
Bitte lesen Sie diese Anleitung sorgfältig durch und bewahren sie anschließend gemeinsam mit der Garantie an einem sicheren Ort auf.



Warning!

To prevent fire or shock hazard, do not expose the unit to rain or moisture.

For customers in the U.S.A.

CAUTION

This equipment has been tested and found to comply with the limits for a Class B digital device, pursuant to Part 15 of the FCC Rules. These limits are designed to provide reasonable protection against harmful interference in a residential installation. This equipment generates, uses, and can radiate radio frequency energy and, if not installed and used in accordance with the instructions, may cause harmful interference to radio communications. However, there is no guarantee that interference will not occur in a particular installation. If this equipment does cause harmful interference to radio or television reception, which can be determined by turning the equipment off and on, the user is encouraged to try to correct the interference by one or more of the following measures:

- Reorient or relocate the receiving antenna.
- Increase the separation between the equipment and receiver.
- Connect the equipment into an outlet on a circuit different from that to which the receiver is connected.

— Consult the dealer or an experienced radio/TV technician for help.

You are cautioned that any changes or modifications not expressly approved in this manual could void your warranty.

For customers in Canada

CAUTION

This Class B digital apparatus complies with Canadian ICES-003.



Bij dit produkt zijn batterijen geleverd. Wanneer deze leeg zijn, moet u ze niet weggooiden maar inleveren als KCA

EC Declaration of Conformity

We
Name :
Address :

Fuji Photo Film (Europe) G.m.b.H.
Heesenstrasse 31
40549 Dusseldorf, Germany

declare that the product
Product Name :
Manufacturer's Name :
Manufacturer's Address :

IMAGE MEMORY CARD READER SM-R1
DIGITAL-CAMERA-FUJIFILM-DX-10
Fuji Photo Film Co., Ltd.
26-30, Nishiazabu 2-chome, Minato-ku, Tokyo 106-8620,
Japan

is in conformity with the following Standards

Safety : EN60065
EMC : EN55022 : 1994 + amendment 1 Classe B
EN50082-1 : 1992
EN61000-3-2 : 1995

following the provision of the EMC Directive (89/336/EEC, 92/31/EEC and 93/68/EEC) and Low Voltage Directive (73/23/EEC).



Dusseldorf, Germany

Place

April 1, 1999

Date

Signature/Managing Director

AVERTISSEMENT

Pour les utilisateurs au Canada

ATTENTION

Cet appareil numérique de la classe B est conforme à la norme NMB-003 du Canada.



Bij dit produkt zijn batterijen geleverd. Wanneer deze leeg zijn, moet u ze niet weggooiden maar inleveren als KCA

Déclaration de conformité de la cee

Nous
Nom :
Adresse :

Fuji Photo Film (Europe) G.m.b.H.
Heesenstrasse 31
40549 Dusseldorf, Germany

déclarons que ce produit
Nom du produit :

Fujifilm Image Memory Card Reader
--Fujifilm Digital Camera--

Nom du fabricant :
Adresse du fabricant :

(Appareil Photo Numérique) DX-10 SM-R1
Fuji Photo Film Co., Ltd.
26-30, Nishiazabu 2-chome, Minato-ku, Tokyo 106-8620,
Japan

est conforme aux normes suivantes

Sécurité : EN60065
EMC : EN55022 : 1994 + amendement 1 Classe B
EN50082-1 : 1992
EN61000-3-2 : 1995

selon les dispositions de la directive de la CEE (89/336/EEC, 92/31/EEC et 93/68/EEC) et de la directive Basse tension (73/23/EEC).



Dusseldorf, Germany

Lieu

Avril 1, 1999

Date

Signature/Directeur général



Bij dit product zijn batterijen geleverd. Wanneer deze leeg zijn, moet u ze niet weggooien maar inleveren als KCA



Erklärung über EG-Normengerechtheit

Wir
Name : Fuji Photo Film (Europe) G.m.b.H.
Anschrift : Heesenstrasse 31
40549 Dusseldorf, Germany

erklären hiermit, daß das folgende Produkt
Image Memory Card Reader
Produktbezeichnung : Fujifilm Digital Camera (Digitalkamera) DX-10
Name des Herstellers : Fuji Photo Film Co., Ltd.
Anschrift des Herstellers : 26-30, Nishiazabu 2-chome, Minato-ku, Tokyo 106-8620,
Japan

den nachstehend aufgeführten Normen genügt:
Sicherheit : EN60085
EMC : EN55022 : 1994 + Ergänzung 1 Klasse B
EN50082-1 : 1992
EN61000-3-2 : 1995

und zwar gemäß den Bestimmungen der EMC-Richtlinie (89/336/EEC, 92/31/EEC und 93/68/EEC) und der Niederspannungs-Richtlinie (73/23/EEC).



Dusseldorf, Germany April 1, 1999 Datum
Ort Unterschrift/Geschäftsführer

FUJIFILM
Image Memory Card Reader SM-R1

ENGLISH

IMPORTANT

▶ To customer — Please read the following before using your SM-R1.

Software and owner's manual precautions

- (1) No part of the software and owner's manual may be reproduced without prior permission.
- (2) The software and owner's manual can be used with one Image Memory Card Reader SM-R1.
- (3) Fuji Photo Film Co., Ltd. shall not be liable for any losses incurred by the customer or other parties by use of the SM-R1 according to the accessory software and owner's manual.
- (4) The SM-R1 has been stringently inspected, but products found to be defective due to faulty materials or workmanship shall be replaced. No other warranty is implied.
- (5) The contents of the software and owner's manual are subject to change without prior notice.

The SM-R1 may be unusable, depending on the personal computer used.

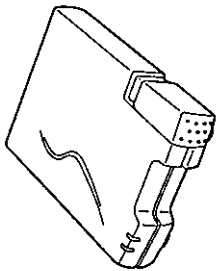
■ To open an image

To display an image fetched to the your personal computer, commercial JPEG image reading software is necessary.

ENGLISH

ACCESSORIES

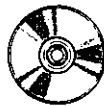
- Image memory card reader (w/four rubber feet)



- USB cable



- SM-R1 setup disk (in paper case)



- Owner's manual (this manual)



■ Trademarks

- Microsoft Windows is a trademark registered by Microsoft Corporation of USA in the USA and other countries.
The official name for Windows is "Microsoft Windows Operating System".
- Macintosh, iMac, MacOS and Kanji Talk are registered trademarks of Apple Computer, Inc. of USA.
- SmartMedia is a registered trademark of Toshiba Co., Ltd.
- Other company names, product names, etc. are trademarks or registered trademarks of the respective company.

■ Notes on Electrical Interference

- The SM-R1 is a Class 2 information processing device (information device to be used in residential and adjacent areas), and complies with the Information Processing Equipment, Etc. Radio Frequency Interference Autonomous Standard Committee (VCCI) for prevention of radio frequency interference in residential areas.
However, the SM-R1 may cause radio frequency interference if used near a radio or television receiver. Handle it properly as described in the owner's manual.
- Do not use the SM-R1 in an aircraft or hospital. It will cause erroneous operation of the aircraft and hospital control devices, etc.

CONTENTS

ENGLISH

IMPORTANT	2
ACCESSORIES	3
BEFORE USING	5
HANDLING	6
USB cable connection	6
Inserting the SmartMedia card	7
Removing the SmartMedia card	7
OPERATING ENVIRONMENT	8
USING WITH WINDOWS98	9
Set up procedure	9
How to use	13
USING WITH A MACINTOSH	14
Before set up	14
"Mac Update 1.0" installation	14
Set up procedure	14
How to use <Reading and Writing files>	15
PC Exchange* / File Exchange*	16
Removing the SmartMedia	16
TROUBLESHOOTING	17
MAIN SPECIFICATIONS	18
SAFETY NOTES (To be observed at all times)	19
DISCLAIMER	19

BEFORE USING

■ Data storage

The data stored in the SmartMedia card may be destroyed in the following cases.
Fuji Photo Film Co., Ltd. shall not be liable for destruction of the stored data.

1. When the customer, or other party, used the SmartMedia card and SM-R1 improperly.
 2. When the SmartMedia card or SM-R1 were affected by static electricity or electric noise.
 3. When the USB cable and SmartMedia card were removed and when the device power was turned off while the SM-R1 was being accessed (record, erase, initialize, or playback operation).
- We recommend that you copy your valuable data to another media (MO disk, floppy disk, hard disk, etc.).

■ Latest product information

The latest production information is available on the following home page. Access this page for more details.

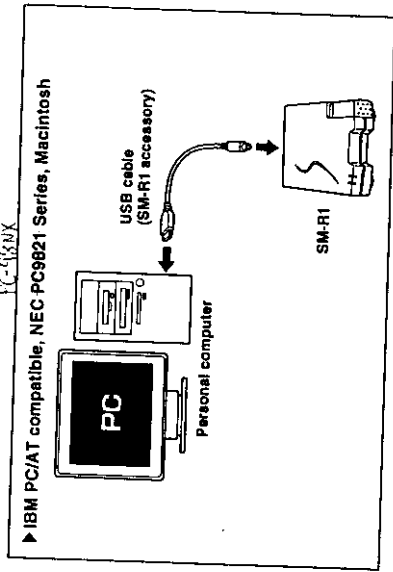
<http://www.fujifilm.co.jp>

HANDLING

The accessory rubber feet are designed to prevent slipping. Install these feet at the four corners of the SM-R1, as required.

■ USB cable connection

The SM-R1 connects to a personal computer and USB hub port as shown below.

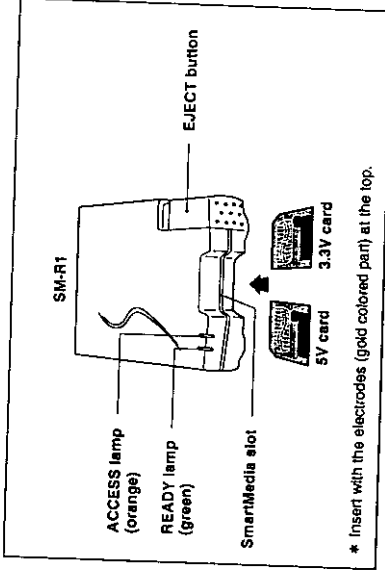


- Insert the USB connector fully and firmly. Improper connection will cause the SM-R1 to malfunction.
- The SM-R1 can be connected and disconnected even while the personal computer power is on.
- When there are two or more USB connectors, the SM-R1 can be connected to any port.
- When using a USB hub, connect the SM-R1 by referring to the USB hub owner's manual.

ENGLISH

■ Inserting the SmartMedia card

Insert the SmartMedia card into the SmartMedia slot as shown below.



【注意】 Insert the SmartMedia card fully by slowly pushing against the rear edge of the SmartMedia card with the inside of your fingers. If the SmartMedia card is inserted properly, the READY lamp will light.

■ Removing the SmartMedia card

スマートメディアを取り出す際は、必ず下記の操作を行ってください。スマートメディアを取り出す前に、「マイコンピュータ」を順番に「リムーブ/リディスク」アイコンをクリックして「取り出し」メニューを選択してください。「READYランプ」が消えていることを確認した後、「イジェクトボタン」を押し込んでください。メディアが途中で出てきますので、手で引き出してください。



【注意】 上記操作を行わずにスマートメディアを取り出すと、USB接続が切断されパソコンの動作が不安定になります。復旧するには、USBコネクタ—を接続し直すが、パソコンを再起動する必要が有ります。スマートメディアにアクセス中（ACCESSランプの点灯中）は、イジェクトボタンに押れないでください。

■ Disconnecting the USB cable

When disconnecting the USB cable, disconnect the SM-R1 end before disconnecting the personal computer end.

ENGLISH

OPERATING ENVIRONMENT

Windows

The SM-R1 can be used with IBM PC/AT compatible personal computers. Windows 98 must be installed.

- Applicable models : IBM PC/AT compatible
 - (* Models that support USB as standard)
 - OS : Windows 98
 - CPU : Pentium or higher
 - RAM : 16MB or more
 - Vacant hard disk space : 10MB or more

Macintosh

- Applicable model : iMac and models that support USB as standard
- OS : Mac OS 8.1 ~ 8.5
- CPU : PowerPC G3
- RAM : 32MB or more
- Vacant hard disk space : 10MB or more

USING WITH WINDOWS98

The following describes the set up method for using the SM-R1 on Windows 98. Use the SM-R1 properly as described below.

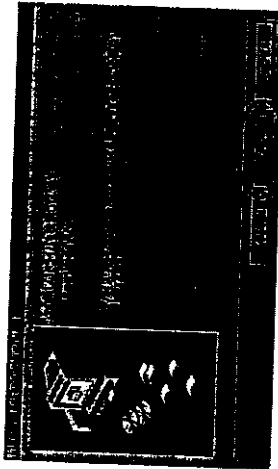
Set up procedure

- ① Turn on the personal computer and start Windows 98.
- ② Insert the set up disk (CD-ROM) into the CD-ROM drive.

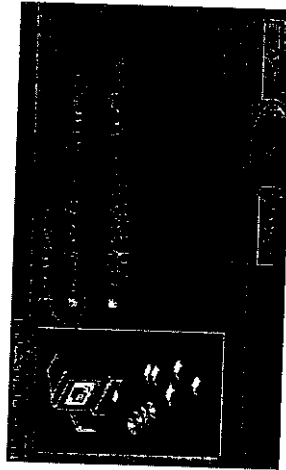
Note

- Insert the USB connector fully and firmly. Improper connection will cause the SM-R1 to malfunction.
- When using a USB hub, connect the SM-R1 by referring to the USB hub owner's manual.
- If there are two or more USB ports, the SM-R1 can be connected to any port.

- ③ Connect the SM-R1 to the personal computer and the USB port of the USB hub.
- ④ The "New hardware addition wizard" window is displayed. Click on the "Next" button.



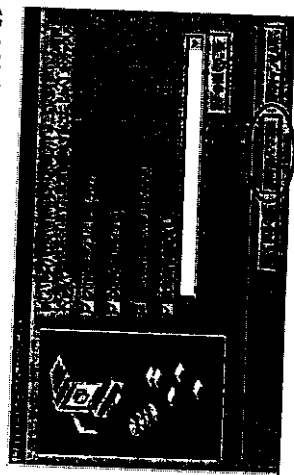
- ⑤ Select "Detect (recommended) best driver for device in use" and click on the "Next" button.



ENGLISH

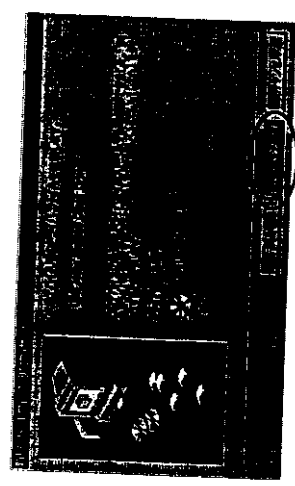
ENGLISH

⑥ 次の画面が表示されたら、「[CD-ROMドライブ]」をクリックして「次へ」ボタンをクリックします。

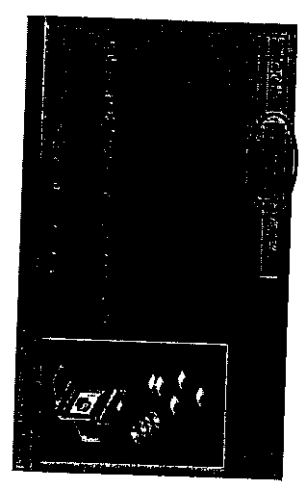


* The window displays may differ somewhat from the above, depending on the personal computer used.

⑦ When the driver is found, the window shown below is displayed. Click on the "Next" button.

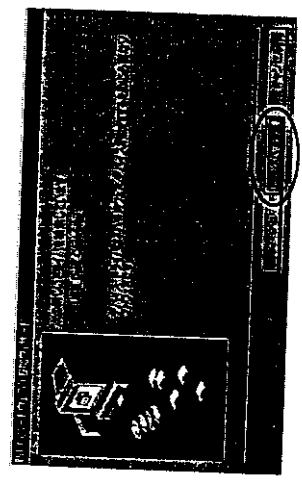


⑧ At the end of driver installation, the window shown below is displayed. Click on the "Finish" button.

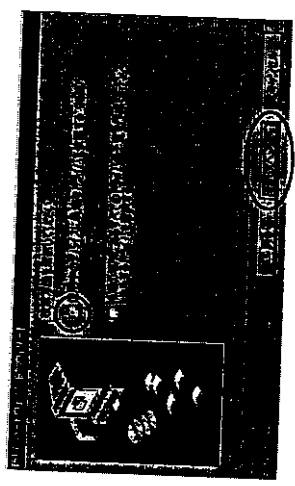


ENGLISH

⑨ The "New hardware addition wizard" window is displayed again. Click on the "Next" button.

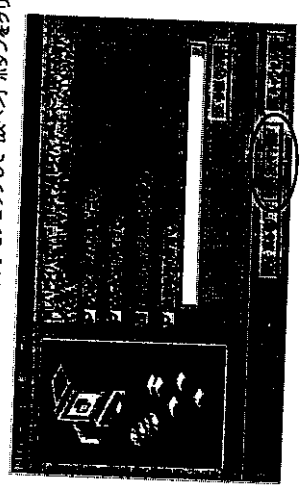


⑩ Select "Detect (recommend) best driver for device being used", and click on the "Next" button.



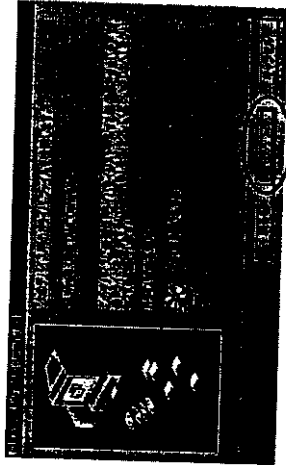
* The window displays may differ somewhat from the above, depending on the personal computer used.

⑪ 次の画面が表示されたら、「[CD-ROMドライブ]」をクリックして「次へ」ボタンをクリックします。

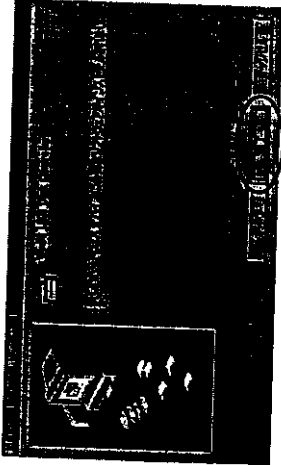


ENGLISH

- ⑫ When the driver is found, the window shown below is displayed. Click on the "Next" button.



- ⑬ At the end of driver installation, the window shown below is displayed. Click on the "Finish" button.



- * The window displays may differ somewhat from the above, depending on the personal computer used.

This completes set up. Hereafter, the personal computer automatically recognizes the SM-R1 by connection of the USB cable.

■ How to use

<Reading and Writing files>

To display the images fetched to a Windows personal computer, commercial JPEG image reading software is necessary. For example, use PICTURE SHUTTLE, etc. supplied with the Fujifilm digital camera IF-V61.

- ① Insert the SmartMedia card into the SM-R1.
- ② When "My Computer" is opened, a "Removable disk" icon not displayed before the SM-R1 was connected appears. Double-click on this icon. The folders and files in the SmartMedia card are displayed.
 - Files can be copied by dragging them from the SmartMedia to the hard disk.
 - Files can be written by dragging them from the hard disk to the SmartMedia.
 - Files can also be read and written by specifying the SmartMedia drive name from the application software.



- Do not turn off the personal computer power, or touch the EJECT button, while the SmartMedia card is being accessed. The SmartMedia card, or the data in it, may be destroyed.

- When using the SmartMedia card with a digital camera, always initialize (format/initialize) the SmartMedia card with the digital camera.

USING WITH A MACINTOSH

The following describes the set up method for using the SM-R1 with an iMac personal computer. Use the SM-R1 properly as described below.
To display images fetched to a Macintosh, commercial JPEG image reading software is necessary.

■ Before set up

Before set up, check the OS version.
When using Mac OS8.1 with an iMac, install "iMac Update 1.0" before installing the driver software. When using Mac OS8.5, install the driver software only.

■ "iMac Update 1.0" installation

"iMac Update 1.0" is software improved by Apple Computer, Inc. to allow use of USB devices on the iMac. Since this software is necessary to use the SM-R1, always install the update.
CD-ROM内の「iMac アップデート」のフォルダをダブルクリックして開きます。中にある「インストールアイコン」をダブルクリックします。メッセージに従ってインストールを進めてください。

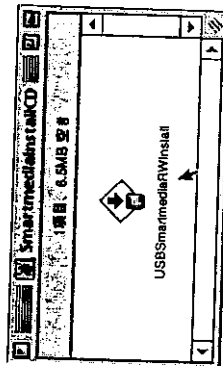
■ Set up procedure

- ① Turn on the personal computer power.
- ② Insert the set up disk (CD-ROM) into the CD-ROM drive.
- ③ Double-click on the "CD-ROM" icon on the desktop.



[SmartMediaRWInstall] (CD)

- ④ Double-click on "USB SmartMedia RW Install". Installation progresses in accordance with the messages.



- ⑤ Restart the personal computer.
- ⑥ After restarting, connect the SM-R1 to the personal computer and the USB port of the USB hub.

Notes

- * Insert the USB connector fully and firmly. Improper connection will cause the SM-R1 to malfunction.
- * When using a USB hub, connect the SM-R1 by referring to the USB hub owner's manual.
- * If there are two or more USB ports, the SM-R1 can be connected to any port.

This completes set up. Hereafter, the personal computer automatically recognizes the SM-R1 by connection of the USB cable.

■ How to use

<Reading and Writing files>

- ① Insert the SmartMedia card into the SM-R1.



名称未設定

The SmartMedia icon is displayed.

- ② デスクトップに表示されているアイコンをダブルクリックします。スマートメディア内のフォルダやファイルが表示されます。
 - Files can be written by dragging them from the hard disk to the SmartMedia folders.
 - Files can be copied by dragging them from the folders in the SmartMedia to hard disk.
 - Files can also be read and written by specifying the SmartMedia drive name from the application software.

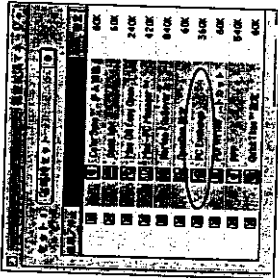
Notes

- * Do not touch the EJECT button while the SmartMedia card is being accessed (while the ACCESS lamp is on). The SmartMedia card, or the data in it, may be destroyed.
- * When using the SmartMedia card with a digital camera, always initialize (format/initialize) the SmartMedia card with the digital camera.

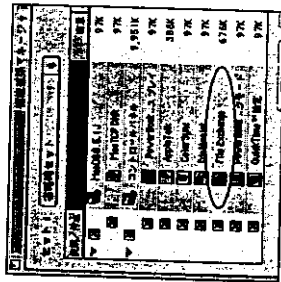
Macintosh

■ PC Exchange / File Exchange について

スマートメディアをお使いいただくにはMacOS付属の「PC Exchange」または「File Exchange」が必要です。システムフォルダの中のコントロールパネル(パネル内にインストールされているか確認してください)。
 * PC Exchange is supplied with Mac OS8.1 and File Exchange is supplied with Mac OS8.5.



MacOS 8.1



MacOS 8.5

- For Mac OS8.1, check if there is an [X] in the PC Exchange check box.
 - For Mac OS8.5, check if there is an [X] in the File Exchange check box.
- For the detail of "PC Exchange" or "File Exchange", refer to "Mac OS HELP" or "Mac OS Information Center".

■ スマートメディアを取り出す

- ① スマートメディアを取り出す場合は、デスクトップ上のアイコンを「こみほ」にドラッグ&ドロップして持てるか、画面上部のメニューバーの「特別」メニューをプルダウンして、「取り出し」を選択して「READYランプ」が消えていることを確認した後、イジェクトボタンを押してスマートメディアを取り出してください。



READY スマートメディアにアクセス中 (ACCESSランプ) の点灯中は、イジェクトボタンに押し当ててください。

ENGLISH

TROUBLESHOOTING

▶ Before deciding that there is some kind of trouble, check the SM-R1 again.

Error	Possible Cause	Remedy
Personal computer does not recognize the SM-R1.	USB connector is not properly connected to the personal computer. Device driver is not installed correctly.	Check if the USB connector is connected properly. (Page 6) Install the device driver correctly. (Page 8, 14)
SmartMedia card is not read. (The icon in the Drive is not displayed.)	Device driver is not installed correctly. SmartMedia card was inserted in the wrong direction. SmartMedia card is not inserted into the SM-R1.	Install the device driver correctly. (Page 8, 14) Insert the SmartMedia card correctly. (Page 7) Insert the SmartMedia card into the SM-R1. (Page 7)
SmartMedia card is not written.	The write protect seal was not removed from the SmartMedia card. When writing was attempted, the data exceeded the vacant space on the SmartMedia card. Device driver is not installed correctly.	Remove the write protect seal. Do not exceed the amount of vacant space on the SmartMedia card. Install the device driver correctly. (Page 8, 14)

ENGLISH

MAIN SPECIFICATIONS

Type	USB image memory card reader
Applicable PC ^{*1}	IBM PC/AT compatible, Apple iMac, and models that support USB as standard.
Applicable OS ^{*2}	Windows 98 Mac OS 8.1 ~ 8.5
Applicable SmartMedia card	5V (2MB/4MB) 3.3V (2MB/4MB/8MB/16MB/32MB)
Host interface	Universal Serial Bus (USB)
Current drain	Suspend : 500 μ A less Operating : Max 100mA or less
Operating conditions	Temperature : 0°C ~ +40°C Humidity : 20% ~ 80% or less (no condensation)
Dimensions	80 X 24 X 115mm (width X height X depth)
Weight	130g

* 1 : Limited to models that support USB interface as standard.



* 2 : Standard installation model is recommended.

* Specifications and functions are subject to change without prior notice.
Fuji Photo Film Co., Ltd. shall not be liable for any mistakes, etc. in the contents of this manual.**SAFETY NOTES (To be observed at all times)**




- Before using your SM-R1, thoroughly read this "Owner's Manual", especially the "Safety Notes".
- After reading this manual, store it where it can be easily accessed.

Icons

Various icons are displayed in this manual and by the software to ensure correct use and to protect you and other users against bodily harm and financial loss. These icons and their meaning are shown below. Read this manual based on a good understanding of their contents.

 WARNING	 CAUTION
Indicates that the subject of this warning may cause death or serious injury if it is ignored and the product is used incorrectly.	Indicates that the subject of this warning may cause personal injury or material damage if it is ignored and the product is used incorrectly.

Typical icons

	Triangular icons indicate operations that prompt a warning or caution. The specific operation that must not be performed (the icon at the left is an electric hazard warning) is shown in the icon.
	Circular icons with a diagonal bar indicate operations that must not be performed. The operation that is specifically prohibited (the icon at the left indicates that disassembly is prohibited) is shown near, or in, the icon.
	Filled circles indicate operations that always must be performed. The specific operation (the icon at the left indicates that the power plug must be unplugged from the AC outlet) is shown in the symbol. Always perform the specified operation.

DISCLAIMER

- Fuji Photo Film Co., Ltd. shall not be liable for losses due to fire, earthquake, action by a third party, other trouble, customer intent or neglect, improper use, or use under other abnormal conditions.
- Fuji Photo Film Co., Ltd. shall not be liable for supplementary losses (loss of business profit, interruption of business, change or loss of memorized contents, etc.) due to use or malfunction of this product.
- Fuji Photo Film Co., Ltd. shall not be liable for losses due to use of this product for purposes other than those described in the owner's manual.
- Fuji Photo Film Co., Ltd. shall not be liable for losses due to erroneous operation, etc. caused by combination of this product with connection devices.

ENGLISH

<p>WARNING</p> <ul style="list-style-type: none"> • Be sure that the USB cable is not touching the SM-R1 or that the SM-R1 is not connected to a personal computer or similar device during a thunderstorm. There is the danger of electrocution by lightning. • Do not play back the accessory CD-ROM on other than a CD-ROM compatible player. Excessive volume may damage your eardrums or the speaker. 	<p>CAUTION</p> <ul style="list-style-type: none"> • Do not let metal objects or liquids enter the SM-R1. The entry of metal objects or water or other liquids into the SM-R1 will cause electric shock or a fire. • Never disassemble the SM-R1. Do not disassemble the SM-R1. Storing, or using, the SM-R1 in the disassembled state will cause trouble or electric shock. • Do not touch the SM-R1 when you hands are wet. Touching the SM-R1 and personal computer with wet hands while the SM-R1 USB cable is connected to the personal computer will cause electric shock. <p>Do not touch with wet hands</p>	<p>CAUTION</p> <ul style="list-style-type: none"> • Do not connect or disconnect the USB cable when your hands are wet. Connecting or disconnecting the USB cable with wet hands while the personal computer power cable is connected to an AC outlet will cause electric shock. • Do not install the SM-R1 where it is wet, humid, hot, or dusty, or where oil, smoke, etc. are prevalent (near a kitchen table, humidifier, etc.). Installation in such places will cause electric shock or other trouble. 	<ul style="list-style-type: none"> • Do not turn off the personal computer power, or touch the EJECT button, while the ACCESS lamp is on. The SmartMedia card and internal data will be destroyed. • Do not allow dirt or foreign matter to enter through the SmartMedia slot. Dust or foreign matter will cause erroneous operation and trouble.
---	--	---	---

ENGLISH

<p>CAUTION</p> <ul style="list-style-type: none"> • Do not drop or otherwise apply strong shock or vibration to the SM-R1. Strong shock or vibration will damage the SM-R1 or cause trouble. • Do not store, or use, the SM-R1 with heavy objects atop it. Heavy objects will damage the SM-R1, or cause trouble. • Do not touch the pins of the USB connector. Touching the pins may damage the SM-R1 and the personal computer. • When disconnecting the USB interface cable, pull out the connector while pressing the end with your finger. Forcefully pulling out the cable itself will damage the SM-R1 and the cable. • Do not use cable other than the cable supplied. The use of other cable will cause erroneous operation. • When inserting the smart media card, pay particular attention to the top and bottom and front and back of the card. Inserting the SmartMedia card in reverse will cause trouble.

▶ USB is the abbreviation for Universal Serial Bus.