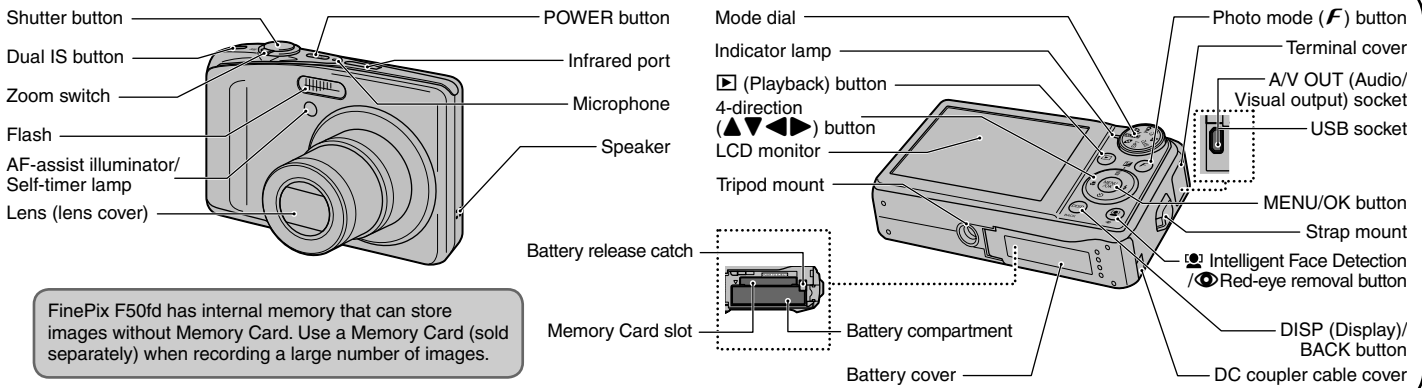


FinePix F50fd

Quickstart

Camera Controls

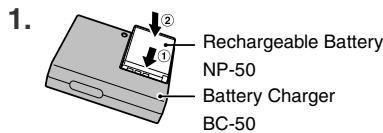


FinePix F50fd has internal memory that can store images without Memory Card. Use a Memory Card (sold separately) when recording a large number of images.

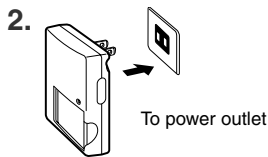
BL00631-200(1) E

Picture Taking

A. Charging the Battery

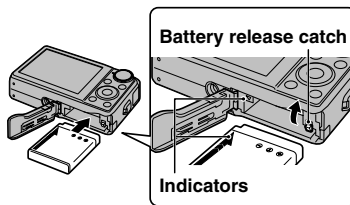


Load the battery into the battery charger BC-50. Set the battery correctly as indicated by the polarity icon.



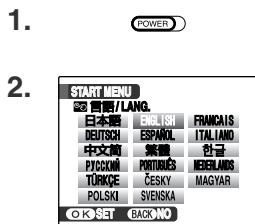
Plug the battery charger into a power outlet. The charging indicator lights red and charging begins. When charging is completed, the indicator lights green. Charging ends after about 2.3 hours.

B. Loading the Battery

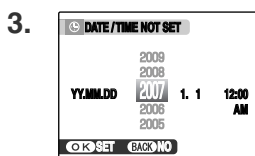


Make sure that the indicators are aligned. Push the battery release catch aside while loading the battery. Check that the battery is firmly held in place.

C. Setting up the Camera

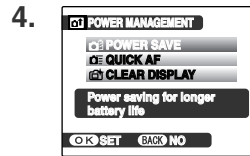


1. Press POWER down fully to turn the camera on.
2. ① 言語/LANG. screen appears on the LCD monitor.
② Press ▲, ▼, ◀, or ▶ to select the language.
③ Press MENU/OK to confirm the setting.



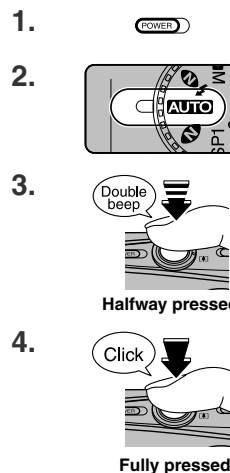
3. ① You can select your preferred date format.
② Press ◀ or ▶ to select Year, Month, Day, Hour, or Minute. Press ▲ or ▼ to correct the setting.
* Refer to the Owner's Manual for "Turning On and Off".

Refer to Owner's Manual for more detailed instructions



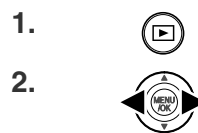
- ① Set the POWER MANAGEMENT options. Select an option from the menu.
- ② Press MENU/OK to confirm the setting.

D. Taking Pictures



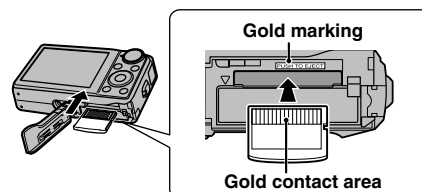
1. Press POWER down fully to turn the camera on.
2. Set the Mode dial to **AUTO**.
3. Press the shutter button down halfway to adjust the focus.
4. Press the shutter button down fully to take a picture. The camera makes a "Click" sound and takes the picture.

E. Viewing the Images



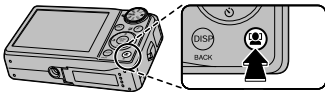
1. Press **▶**.
2. Press ◀ or ▶ to move through your images.

How to insert a Memory Card.




Align the gold marking with the gold contact area, then insert an xD-Picture Card or SD Memory Card completely.

Using Intelligent Face Detection



With Intelligent Face Detection, the subject's face(s) is detected and focused on automatically, so you can take a picture of people in most suitably lit conditions.

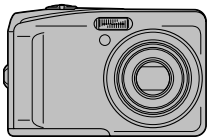
Intelligent Face Detection will even detect and focus on two faces on opposite sides of the frame, where ordinarily the background in the center of the frame would be focused. In addition, Intelligent Face Detection adjusts for the brightness of the faces.

Push  to zoom in on a face when playing back the image taken with Intelligent Face Detection.

Viewing Images on your PC

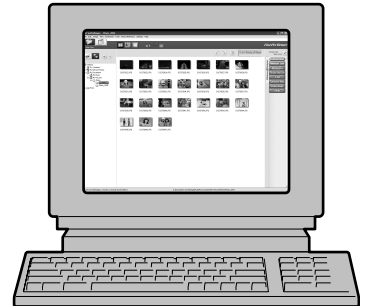


A. Installing Software



B. Connecting the Camera to your PC

C. Saving the Images



A. Installing Software

Do not connect the camera to your PC until the software installation is completed.

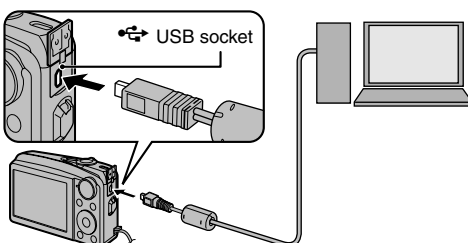
1. Turn on your PC and start up Windows.
 - Users of Windows 2000 Professional or Windows XP or Windows Vista should log in by using a system administrator account (e.g. "Administrator").
2. Quit all other active applications until no applications are shown in the taskbar.
3. Load the enclosed CD-ROM into the CD-ROM drive. The installer starts up automatically.
For Windows Vista users:
When loading the bundled CD-ROM on your PC, the "AutoPlay" window may appear. In this case, click "SETUP.exe". When "User Account Control" window appears, click "Allow".
4. The Setup screen appears. Click the [Installing FinePixViewer] button.




5. After installation completed, press [Restart] button.

B. Connecting the Camera to your PC

1. Insert the Memory Card with images into the camera.
2. Connect the camera to your PC using the USB cable (included).



3. Press  for about 1 second to turn the camera on in Playback mode.

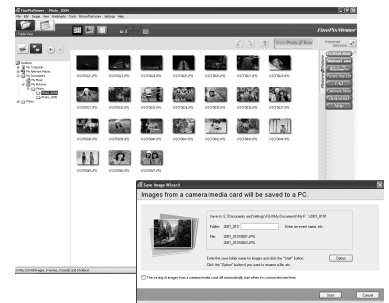
4. Windows 98 SE/Me/2000 Professional

FinePixViewer starts up automatically.

Windows XP/Vista

The "Found New Hardware" help message appears in the bottom-right corner of your screen. This message will close when the settings are completed. No action is required.

FinePixViewer starts up automatically.



C. Saving the Images

1. The Save Image Wizard starts up. Click the [Start] button.
2. Check that the files are downloaded from the camera to your PC and that a folder with the date is created.
Ex. \My Documents \ My Pictures \ 2007_0801

D. Viewing the Images

1. Click the [Show List of Images] button.



2. Select "Preview" in the View menu to display an enlarged image.

For more information

Refer to "How to use FinePixViewer" in the HELP menu, or "Software Installation" in the Owner's Manual, or visit Fujifilm "Q&A Search" in the following website.

(<http://www.fujifilm.com/products/digital/>)

For Macintosh users, refer to "Software Installation" in the Owner's Manual.