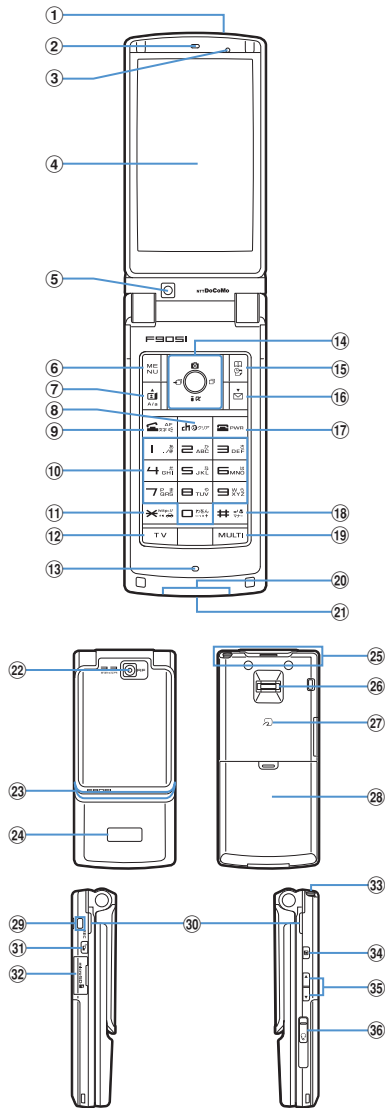


Before Using the Handset

Names and functions of parts	24
Swinging display (YOKO-MOTION)	26
Display overview	26
Sub-display overview	29
Selecting functions from menu	30
Selecting a function from menu on sub-display	34
Using UIM (FOMA card)	34
Attaching/removing battery pack	36
Charging the FOMA terminal	36
Checking remaining battery level Remaining battery level	39
Turning power ON/OFF	Power ON/OFF 40
Switching to English	Select language 41
Setting date and time	Date & time 41
Notifying your phone number to the other party Caller ID notification	42
Checking your own phone number	User information 42

Names and functions of parts



- ① **Infrared data port**→P304、308
Use for Infrared communication, Infrared remote control.
- ② **Earpiece**
Use to hear other party's voice from here.
- ③ **Light sensor**
Sense the ambient luminance (automatic adjustment of the brightness of the display).
* Blocking the light sensor may disable correct adjustment of the brightness.
- ④ **Display**→P26

⑤ **In-camera**

Use to shoot the image of yourself, send the image of yourself over a videophone call.

⑥ **MENU key**

Use to display menus, perform the operation shown in the upper left part of the guide area.

Press and hold for 1 second or more : Starting/
Canceling Side key hold

⑦ **Videophone start/▲(scroll)/A/a key**

Use to make/receive videophone calls, scroll upward by pages of the mail screen or site/website display, switch cases when entering characters, perform the operation shown in the lower-left corner of the guide area.

Press and hold for 1 second or more : Make a videophone call using the speakerphone.

⑧ **ch / α / Clear key**

Use to display i-Channel list, switch i-appli stand-by display and i-appli activation, delete characters or return to previous display.

Press and hold for 1 second or more : Start/cancel Self mode.

⑨ **Start voice call/Character/Speakerphone/AF key**

Use to make/answer voice calls, switch character entry modes, switch ordinary and speakerphone calls or activate/cancel Auto focus.

Press and hold for 1 second or more : Make a voice call using the speakerphone.

⑩ **Keypads**

Use to enter phone numbers or text, perform menu items.

Press **1 - 9** for 1 second or more : Perform the functions registered in the custom menu.

Press **0** for 1 second or more : Set auto switch of Int'l call assist when making international calls.

⑪ *** /Public mode (Drive mode) key**

Use to enter " * ", " * ", " ° ", etc., switch status display/hide of guide area in wide display.

Press and hold for 1 second or more : Start/cancel Public mode.

⑫ **TV key**

Watch 1Seg or switch Multi Window.

⑬ **Microphone**

Send your voice from here.

* Do not cover with your finger while talking or recording sound.

⑭ **Multi-cursor key**

Enter key

Use to perform the selected operation, activate Focus mode.

Press and hold for 1 second or more : Start i-appli set for one-key shortcut.

Camera/ ↑ key

Use to activate Still camera, adjust volume, move the cursor upward.

Press and hold for 1 second or more : Activate Movie camera.

i-mode/i-appli/ ↓ key

Use to display i-mode menu, adjust volume, move the cursor downward.

Press and hold for 1 second or more : Display i-appli folder list.

Received calls/← (previous) key

Use to display Received calls, switch displays, move the cursor leftward.

Press and hold for 1 second or more : Set/cancel Privacy mode.

Redial/→ (next) key

Use to display Redial, switch displays, move the cursor rightward.

Press and hold for 1 second or more : Start/cancel IC card lock.

* Representation of the icon may vary by the key operations as



15 Phonebook/Schedule key

Use to display Phonebook, perform the operation shown in the upper right part of the guide area.

Press and hold for 1 second or more : Display Scheduler

16 Mail/▼ (Scroll)/Lower-right soft key

Use to display mail menu, scroll downward the mail screen or site/website display by pages, perform the operation shown in the lower-right corner of the guide area.

Press 2 times : Check new message

Press and hold for 1 second or more : Display Compose new message screen.

17 Power/End key

Use to terminate on-hold, calling/operating function, display/hide calendar layout.

Press and hold for 2 seconds or more : Turn power ON/OFF.

18 #/Line-feed key/Macro shooting/Silent mode

Use to enter "#", start a new line when entering characters, switch Macro mode while using out-camera.

Press and hold for 1 second or more : Start/cancel Silent mode.

19 Multitask key

Use to perform another function while talking or perform an operation (Multiaccess/Multitask).

20 Charging jack

21 Jack

Connect various optional devices

22 Out-camera

Use to shoot still images or movies, send images over a videophone call.

23 Light→P62, 105, 142, 347105

Turn on or blink when activating Lock on close, shooting an image, recording a movie, operating Music&Video Channel player or Music player operate according to the settings of Indicator light or Light alert, Simple light or Light.

24 Sub-display→P29

25 FOMA Built-in antenna

* The terminal has a FOMA built-in antenna. To talk in better conditions, do not cover the antenna with your hand.

26 Fingerprint sensor→P112

Register/authenticate fingerprint

27 FeliCa mark→P232, 305

Installation of IC card

* You can use Osaifu-Keitai by placing it over IC card reader or send/receive data by iC transmission. The IC card cannot be detached.

28 Back cover

29 Strap opening

30 Speaker

Hear ring alert or voice of the caller using the speakerphone, etc. from here.

31 PushTalk/REC key

Use to display a menu on the sub-display, operate PushTalk, save still image during 1Seg watching.

Press and hold for 1 second or more : Video recording during 1Seg watching

32 microSD memory card slot→P292

33 1Seg antenna→P253

34 Music key

Use to perform menu items on the sub-display, operate Music&Video Channel player or Music player

Press and hold for 1 second or more : Start Music player

35 Side keys[▲▼]

Side keys[▲] : Stop ring tone, alarm or vibrate effect, increase the volume during a call or PushTalk call, turn on the light of the sub-display while the FOMA terminal is folded, switch display, select menu

Side key[▲](1 sec. or more) : Start Quick answer machine while a call is incoming, start/stop voice memo/movie memo during a call, starting/cancel

Cancel mode while the FOMA terminal is folded*, activate answer machines/voice memos on the stand-by display while the FOMA terminal is open

Side key[▼] : Decrease the volume during a call or PushTalk call, Turn sub-display light ON while the FOMA terminal is open, switch display, select menu item

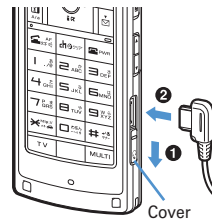
Side key [▼] (1 sec. or more) : Silence while watching 1Seg or playing video, check new message on the stand-by display*

* The setting of pressing and holding the Side keys is the operation in the default state.

36 Earphone/microphone jack→P354

Connecting the Earphone/microphone with switch

Slide cover in the direction of ①, connect an optional Flat-plug Earphone/Microphone with Switch, etc (②).



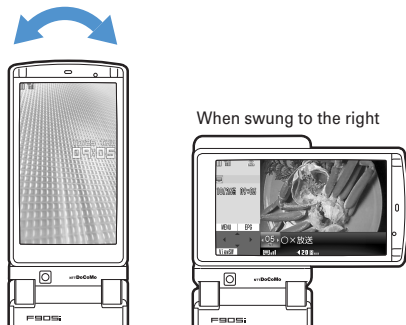
* Securely insert the plug.

* Avoid wrapping the cord around FOMA terminal or bringing it close to the antenna. Doing so may lower wave reception level or generate noise.

Swinging display (YOKO-MOTION)

With FOMA terminal open, rotate the display 90 degrees to the right or left to display Horizontal display.

- You can activate 1Seg watching or Still camera by rotating. You can also answer a call by returning the display to vertical position. You can change in Turn-display option to set functions to be activated by rotating. →P346
- On horizontal display, the display position of the guide area, etc. is different, but the same operations as those on vertical display can be performed.



✓INFORMATION

- Do not rotate the display with the FOMA terminal folded. May cause the display and around the keys to be scratched.
- While one of the Submenu, New Task start menu or Screen switching menu is being displayed, swinging the display closes the menu.

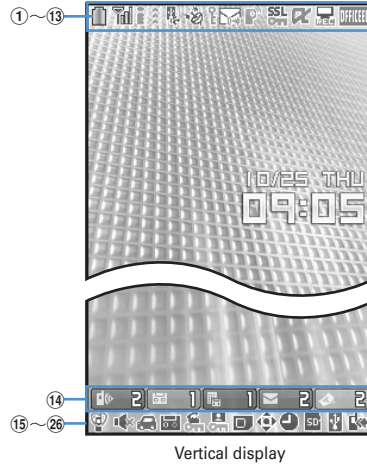
❖Using wide display

By returning the display to vertical position, the functions and/or data below can be displayed on 864 dots (horizontal) wide display.

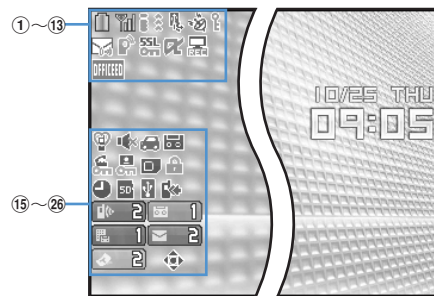
- Full Browser
- i-appli with a size exceeding 320 dots (horizontal)
- i-motion, PDF data, Word, Excel, PowerPoint file with a size of QVGA (240×320)
- One Seg (including Multi Window)

Display overview

The current status can be checked by the icon appearing on the screen.



Vertical display



Horizontal display

- ① : Battery icon →P39
- ② : Signal level icon →P40
- : Out of service area →P40
- : Self mode ON →P117
- : In data transfer mode →P122, 290, 304, 426
- ③ : In i-mode communication (connected to i-mode site)/(during packet communication) →P152
- ④ : In infrared communication →P304
- : Infrared remote control function in operation →P308
- : The total calls cost exceeds the limit. →P351
- *1 ⑤ : Communication using handsfree-compatible device in progress →P54
- : Speakerphone function in use →P45
- : Network in use →P391
- *1 ⑥ : Positioning with GPS →P242
- : FM broadcasting →P334
- / : Location request setting with GPS/ out of Permission period →P246
- ⑦ : Phonebook entry or schedule data has secret attribute →P84, 344

- ^{*1} ⑧ Unread Area Mail, unread message or MessageR&F status→P181, 202, 205, 210
 - : Unread Area Mail
 - : Unread i-mode mail and SMS storage space is full on UIM
 - : Unread i-mode mail and SMS storage space is full
 - : SMS storage space is full on UIM
 - : Unread i-mode mail and SMS exists
 - : Unread i-mode mail exists
 - : Unread SMS exists
 - (red)/ (blue) : Unread MessageR storage space is full or unread MessageR exists
 - (red)/ (green) : Unread MessageF storage space is full/unread MessageF exists
- ^{*1} ⑨ PushTalk status or storage status in i-mode Center→P68, 181, 202
 - : During PushTalk session
 - : Downloading phonebook page on the network
 - : i-mode mail and MessageR/F storage are full or one of these spaces is full and unreceived messages exist in Data Center
 - : i-mode mail or MessageR/F storage space is full in data Center
 - : Unreceived i-mode mail and MessageR/F exist in Data Center
 - : Unreceived i-mode mail or MessageR/F exist in Data Center
- ^{*1} ⑩ : Displaying SSL page/executing SSL session with i-appli or using i-appli downloaded from SSL page→P153
 - : Displaying SSL/TLS page→P268
 - : Mail failed to Auto-send exists→P180
 - : Auto-send mail exists→P180
 - : Music&Video Channel program obtaining reservation exist→P319
- ⑪ i-appli/i-appliDX status→P217, 227
 - : During i-appli operation
 - (gray) : i-appli stand-by display ON
 - (orange) : i-appli is being started from the i-appli stand-by display
 - : i-appliDX is running
 - (gray) : i-appliDX stand-by display ON
 - (orange) : i-appli is being started from the i-appliDX stand-by display
- ^{*2} ⑫ : Performing 1Seg recording reservation→P258
 - : i-appli Auto start failed→P226
- ^{*2} ⑬ : Inside OFFICEED area→P378
- ⑭ : New arrival→P33
- ⑮ : Silent mode ON→P94
 - : Personalized silent mode ON→P94
- ⑯ : Call alert volume OFF→P91
 - : Vibrator for voice call set ON→P91
 - : Call alert volume set OFF and vibrator for voice call set ON→P91
- ⑰ : In Public mode (Drive mode)→P58
- ⑱ : Answer machine set ON/recorded message full→P60

- ^{*1} ⑲ : Keypad dial lock ON→P118
 - : Side key hold ON→P123
 - ^{*1} ⑳ : Location request success/failure/end as unanswered→P246
 - : Personal data lock ON→P117
 - : Music&Video Channel obtaining failure/success→P319
 - : 1Seg recording reservation failure/success→P258
 - ^{*1} ㉑ : Reading UIM→P34, 40
 - (yellow key) : IC card lock ON→P239
 - : Individual IC card lock→P239
 - ㉒ ^{*3} : Displaying available multi-cursor key in Focus mode→P33
 - : Lock on close ON→P123
 - ㉓ : Alarm clock set ON→P338
 - : Performing 1Seg timer recording, schedule reminder set ON→P258, 341
 - : Alarm clock and Schedule reminder set ON→P338, 341
 - ㉔ USB mode settings and microSD memory card status→P292, 298
 - : microSD memory card inserted during Communication mode
 - (blue)/ (gray) : microSD memory card inserted or not during microSD mode
 - (blue)/ (gray) : microSD memory card inserted or not during MTP mode
 - ㉕ : Connected to external device using USB cable→P65, 299
 - ^{*1} ㉖ : Software update advance notice→P439
 - : Software update pre-specified→P441
 - : Update notification icon→P439
 - : Auto-update of latest pattern definition failure/success→P443
- ^{*1} The current highest-priority item is displayed. These icons are listed in descending order of the priority from the top.
- ^{*2} On vertical display without stand-by display or on some wide display, a clock appears.
- ^{*3} On horizontal display, it appears below ⑭ newly arrived information.

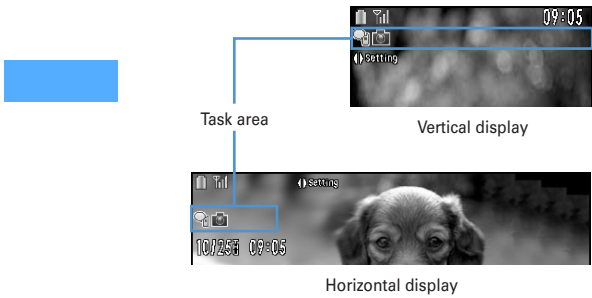
INFORMATION

- On wide display, icons appear similarly to vertical display. Note that, depending on the function displayed, some or none of the icons may not appear.

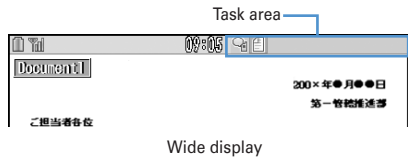
◆ Task area

The icon indicating the function (task) in progress appears in the task area. During Multiaccess or Multitasks, the icons show which functions are running.

<Example> When activating Still camera during a voice call



<Example> Displaying Word file during a voice call



* When displaying Word, Excel or PowerPoint file on wide display, a task area appears similarly to vertical display.

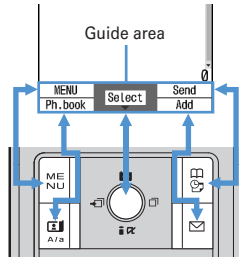
◆ Icons indicated on the task area

- : Voice call
- : Redial
- : Received calls
- : Answer machine/Voice memo
- : Videophone call
- : Videophone using an external device
- : Call (switching)
- : Call (disconnecting)
- : PushTalk
- : FOMA terminal phonebook
- : Contact setting of Privacy mode
- : Kisekai Tool
- : Still camera
- : Movie camera
- : Bar code reader
- : i-mode
- : i-mode Bookmark/Go to location/Screen memo/two-touch site
- : Message/R/F
- : Mail
- : Area Mail
- : Receiving i-mode mail
- : Inquiring for i-mode mail/SMS
- : Sent msg log/Received msg log
- : Chat mail
- : Receiving SMS

- : i-appli
- : ToruCa
- : Position location of GPS
- : Location request of GPS
- : Notify location of GPS
- : Location history (GPS)
- : Full Browser
- : One Seg
- : My Picture
- : Movie/i-motion
- : Chara-den
- : Melody
- : Accessing microSD memory card/ Standing by for accessing
- : Activating Music&Video Channel
- : Music&Video Channel program obtaining
- : Music player
- : Sound recorder
- : My Document (PDF data)
- : Other (Word, Excel, PowerPoint file)
- : Adjusting volume by Multitask
- : Countdown timer
- : Alarm clock
- : Scheduler
- : Schedule reminder ringing
- : User information
- : Calculator
- : Notepad
- : Dictionaries
- : Accessing Data Center
- : Displaying synchronization log
- : Network services set
- : Calling or communicating packets via USB/ Sending or receiving packets via USB
- : 64K data communication
- : Accessing external data
- : Updating software/Software update notified
- : Updating pattern definition/displaying version
- : Each function set or on hold

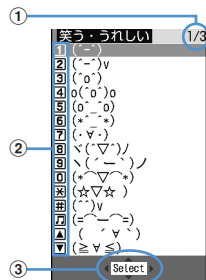
◆ Guide area

Operations that can be executed by pressing , , , and are displayed in the guide area. Displayed operations vary by the screen. Display locations and keys correspond as shown in the figure.



- on the guide area corresponds to multi-cursor keys (It may be different depending on the function you are using or how the site or website is made).
- When the display is placed in horizontal position, this is displayed at the left bottom of the display.
- In wide display, press to display a guide area; each pressing of this key switches guide area display/ hide (except during One Seg watching).

◆ List screen



- ① When a list extends to multiple pages, the currently displayed page number and the total number of pages appear.
- ② The items can be selected by pressing the keypads corresponding to the displayed number (-). On vertical display, item can be selected also by pressing the displayed next key.
 : :
 : : Side key[▲]
 : : Side key[▼]
- ③ indicates that other selectable items exist above and below the item at the cursor position. Press to move the cursor. When is pressed on the last item of the page, the next page appears, when is pressed on the first item of the page, the previous page appears.
 indicates that selectable items exist over the multiple pages. Press to change the page. Some

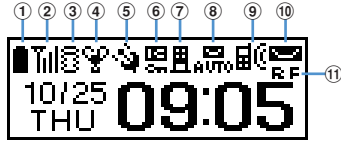
screens such as an icon selection screen cannot be switched.

Sub-display overview

Even when FOMA terminal is folded, various information can be checked on the sub-display.

- Main displayed information are as follows.
 - Status display of voice call, videophone (including Chaku-moji and Voice messages in Voice Mail service), PushTalk, recorded message
 - Inquiring or receiving i-mode mail, SMS or MessageR/F
 - Status display of Position location of GPS, Location request, Notify location function
 - While watching 1Seg, playing melody, activating Music&Video Channel player, activating Music player or using microSD memory card
 - During Alarm clock, Schedule reminder or Countdown timer sounding
 - Status display of packet communications, 64K data communication, via USB communication, infrared communication
- In All lock, Omakase Lock, Side key hold, pressing side keys [], or shows a message indicating the lock is set, and after a period of time, the display is switched to the date/time display screen.
- When the FOMA terminal is folded, the light on the sub-display turns on. When no operation is carried out for approximately 15 seconds, the light goes unlit; it goes lit again when one of side keys [], or is pressed.
- When opening the FOMA terminal with information displayed on the sub-display, display disappears. During shooting a still image, recording movie, shooting stand-by or recording stand-by with Sound recorder, the status appears only when the FOMA terminal is open. While recording with Sound recorder, the status appears regardless of the status of the FOMA terminal.
- By pressing while watching 1Seg or activating Music player , you can display date and time.

◆ Icon list displayed on the sub-display



- ① : Battery icon
- ② : Signal level icon
- : Out of service area
- : Self mode ON
- : In data transfer mode
- ③ : In i-mode communication (connected to i-mode site)/(during packet communication)
- ④ : Silent mode ON
- : Personalized silent mode ON
- : Activating Music player
- : During One Seg watching
- ⑤ : Location request setting with GPS/Out of permission period
- ⑥ : IC card lock ON
- ⑦ : i-mode mail and MessageR/F storage spaces are full in the Center
- ⑧ : Auto-send mail exists/failed auto-send mail exists
- ⑨ : Missed calls/recorded messages/Voice messages in Voice Mail service exists
- ⑩ : Unread Area mail exists/Unread i-mode mail and SMS exist/storage space is full
- ⑪ : Unread MessageR exists or unread MessageR storage space is full
- : Unread MessageF exists or unread MessageF storage space is full

◆ Switching display of sub-display

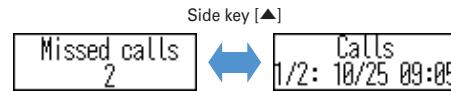
When missed calls, recorded messages, unread messages, unread MessageR/F or Voice messages in Voice Mail service in the Center exist, turn on the sub-display light and press side key [▼] to check the number of these items. While checking the number of items, if you press side key [▲], detail information appears for approx. 5 seconds (except for voice mail in the Center).

- Up to 10 detail info can be confirmed by pressing the side key [▼] .

<Example> Switching to detail information of missed calls

1 Side key [▲] while confirming the number of items

The Number of items, total number of items, receive date/time, and the caller information are scroll-displayed.



Selecting functions from menu

◆ Menu screen and switching method

◆ Menu screen

The menu screen below is available.

Kisekæ menu : A menu that you can change the design using Kisekæ tool.

In addition to menus compatible with movies, Large menu (AdvancedMode) that is easy to view with large font and Simple Menu are available. A Kisekæ menu matched with the color of the FOMA terminal is set by default.

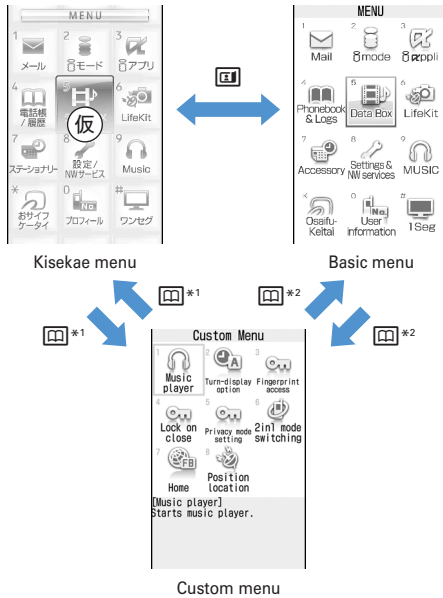
* Some Kisekæ menu changes the menu structure of its first layer according to usage frequency. In the Kisekæ tool set by default, "DoCoMo-Dake" in the "i-mode" folder is compatible with this function.

Basic menu : A basic menu that the menu numbers are fixed. Compatible with Large font.

Shortcut menu : A menu that menu items can be freely registered. →P344

◆ To switch the menu screen temporarily

In each menu screen, you can temporarily switch to a different menu screen by the operations below. You can also set which menu to display when pressing [ME] on the stand-by display. →P101



- *1 Cannot be switched when "Basic menu" is set as Select startup menu.
- *2 Cannot be switched when "Kisekai menu" or "Shortcut menu" is set as Select startup menu.

◆ Precautions on using Kisekai menu

Although [ME] ▶ [Settings & NW services] ▶ [5][7][2] is described in this manual, when using a Kisekai menu that the menu structure of the first layer is changed according to the usage frequency, [Settings & NW services] may not be displayed in the menu of the first layer. In such a case, switch to the basic menu or reset (→P104) the menu settings.

◆ Selecting a function

Press [ME] in stand-by and select and execute the functions from the menu displayed.

There are 2 ways. One method involves using the key corresponding to the menu items (Shortcut operation). In the other method, the multi-cursor key is used to select from among the menu items.

- When any function is restricted by lock functions or no UIM in slot, icon appears or characters are displayed in a different color that the function is disabled. The display does not change for Kisekai menu or Basic menu on horizontal display. When a function is selected, the reason the function is nonexecutable, etc. appears.
- On vertical display, function description about the menu item at the cursor position may appear depending on the type or level of the menu. And the setting may be displayed depending on the menu item.

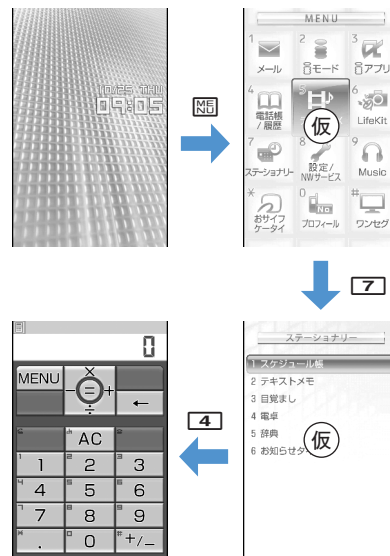
◆ Selecting menu items by key (Shortcut operations)

A number (item number) is assigned to each menu item. The menu icons can be selected by pressing the corresponding key ([0]-[9], [X], [#]).

- When the menu items or numbers of the first layer are switched in Kisekai menu, press the item number displayed with the menu item you want to select.
- Item numbers differ when Simple Menu is set in Kisekai Tool.
- Item number of the menu →P394"Menu list"

<Example> Selecting "Calculator"

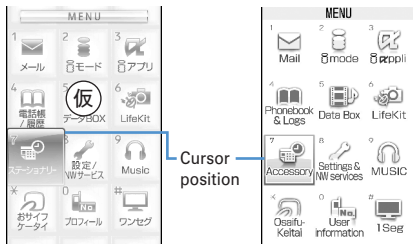
[ME] ▶ [7] ▶ [4]



◆ **Selecting menu items by multi-cursor key**

<Example> **Selecting "Calculator"**

1 **Place the cursor on "Accessory", and**



- If you press **Left Arrow** to move the cursor, the color and/or design of the cursor position change. Moving by **Right Arrow** may be unavailable depending on the menu.
- When you set Simple Menu for Kisekai menu, you can select menu also by placing the cursor and pressing **Right Arrow**.

2 **Place the cursor on "Calculator" and**

◆ **To return to stand-by display or previous menu**

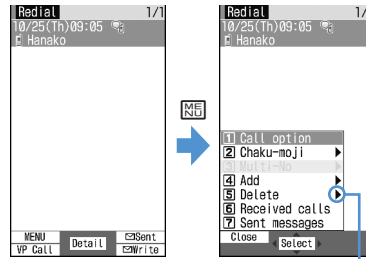
After selecting a menu item, you can return to the stand-by display or previous menu by pressing the keys below.
Left Arrow: Return to the stand-by display.
Right Arrow: Return to the previous menu. When the menu is displayed in List view or Simple display, you can return to the previous menu by pressing **Left Arrow**.

◆ **Selecting method of submenu**

When "MENU" is displayed at upper-left of the guide area, various operations can be performed with submenus.

<Example> **Selecting the redial submenu**

1 **On the redial list screen, Press a key for the submenu item number**



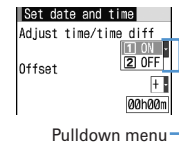
There are menu items in lower levels

- You can also select an item by placing the cursor on and pressing **Left Arrow** or **Right Arrow**.
- Item numbers of the submenu with the same functions may vary by the operating screen.
- Pressing **Left Arrow** or **Right Arrow** closes the submenu.

◆ **Operating procedure of each item**

◆ **Pull-down menu operation**

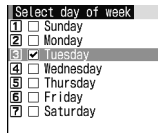
1 **Place the cursor on the item to set and Press a key for the item number**



- You can also select an item by placing the cursor on it and pressing **Left Arrow**.

❖ Check box operation

1 Press a key for the item number.



- You can also select an item by placing the cursor on it and pressing **[OK]**.
- Pressing key for the item number or pressing **[OK]** after placing the cursor, the status of check box switches between (Select) and (Cancel).
- For some functions, you can select or cancel all items by pressing **[MENU]**.

❖ Confirmation screen operation

While deleting or setting saved information, a confirmation screen may appear asking if you perform a function.

<Example> Deleting Phonebook data (1 item)

1 Place the cursor on "Yes" or "No" and **[OK]**



- For some functions, items other than "Yes" or "No" may appear.

◆ Displaying information quickly <Focus mode>

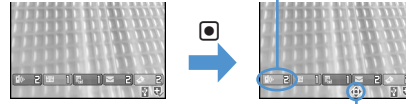
When **[OK]** is pressed on the stand-by display with newly arrived information (icon) being displayed on the stand-by display or with Info/calendar layout set and displayed, the display enters Focus mode that allows to quickly display the related information.

- You can perform the same operations when the next icon appears.
 - : Connected to external device using FOMA USB Cable with Charge Function
 - : Software update advance notice/notification
 - : Auto-update of latest pattern definition success/failure
 - : Location request success/failure/end as unanswered
 - : Music&Video Channel program obtaining success/failure
 - : 1Seg recording reservation failure/success

<Example> Displaying newly arrived information

1 **[OK]** Place the cursor on an icon and **[OK]**

An icon at the cursor position is surrounded with a red frame.



The direction is indicated that it can be moved to by using multi-cursor key.

- A screen matched for the selected icon appears.
 - (Missed calls) : Received call list appears. With 2in1 ON in Dual mode, appears when there is a missed call only to Number B and appears when there are missed calls to both Number A and B.
 - (Recorded messages) : The recorded message list appears.
 - (Voice messages in Voice Mail service) : A confirmation screen of message play appears. With 2in1 ON in Dual mode, appears when there is a voice message only to Number B and appears when there are voice messages to both Number A and B.
 - (Unread messages) : The folder list of Inbox appears.
 - (Unread ToruCa) : The ToruCa list of the folder containing the latest unread ToruCa appears.

Canceling Focus mode : or

✓INFORMATION

- When placing the cursor on the icon for newly arrived information and press and hold for 1 second or more, the icon disappears temporarily. For a voice message icon of Voice Mail service, a confirmation screen appears asking if you delete the display. Select "Yes" to delete the display. It reappears when the number of items is changed by accumulating new information or viewing existing information.
- In Focus mode, you cannot display the menu by pressing **[MENU]**.

Selecting a function from menu on sub-display

You can select 5 functions of MusicPlayer/End MusicPlayer, Lock/Unlock IC card, Silent mode ON/OFF, Check new msg, Simple light.

<Example> Performing i-mode inquiry

While sub-display light is ON, Using side key [], place the cursor on "Check new msg" and



- During menu display, press to return to date/time display.
- Authentication is required when "Unlock IC card" is selected.

Using UIM (FOMA card)

UIM (FOMA card) is a card for storing user information such as phone numbers.

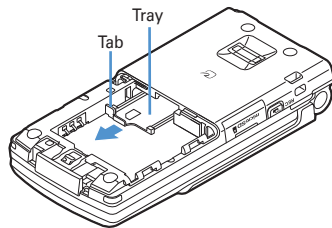
- If a UIM has been inserted incorrectly or if there is a problem with the UIM, you cannot make/receive a call or send/receive a mail.
- For details on handling UIM, see the UIM manual.

◆ Attaching/removing UIM

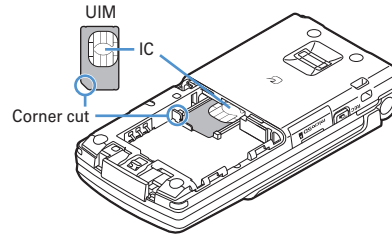
- After turning the power OFF, fold FOMA terminal and hold it with your hand.
- Take care not to touch or scratch the IC portion.
- Attaching/removing back cover and battery pack → P36

■ Attaching

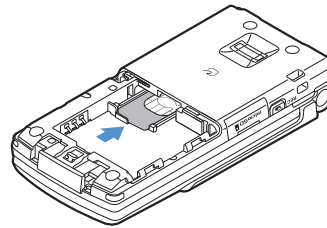
- ① Holding the tab, pull out the tray until it clicks.



- ② Put UIM with the IC side upward on the tray in the direction shown in the figure.

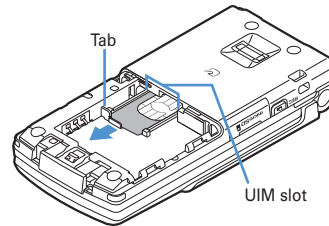


- ③ Push the tray fully until it stops.



■ Removing

- ① Holding the tab, pull out the tray until it clicks and carefully remove UIM.



✓ INFORMATION

- Forcing the UIM into or out of FOMA terminal may damage UIM or the tray.
- If the tray is removed, press it straight along the guide rail inside the UIM slot with the UIM left detached.

◆ Security code of UIM

Two security codes, "PIN code" and "PIN2 code", are set for the UIM.

You can change the security codes by yourself. → P112

◆ UIM operation restriction

FOMA terminal is provided with the UIM operation restriction for protecting your or copyright data or files.

- When files or data are downloaded from websites or data attached to mails are obtained to your FOMA terminal with the UIM card equipped, the UIM operation restriction is automatically set to these data or files.
 - With UIM replaced or no UIM inserted, data or files with the UIM operation restriction set cannot be displayed or played. For i-appli with the UIM operation restriction set, no functions except deletion are available.
 - Data or files with the UIM operation restriction set cannot be transferred over infrared communication/iC transmission or copied/moved to microSD memory card.
 - Restricted data types are as follows :
 - Videophone call message, Movie memo
 - i-mode mail attachment files (except ToruCa), images inserted to Deco-mail or signature, MessageR/F with images or melodies attached, mail template containing data subject to operation restriction
 - Screen memo
 - i-appli (including i-appli stand-by display)
 - Image of ToruCa (Details)
 - Images (including GIF animations, Flash graphics and images downloaded from Data Center), i-motion, data compatible with contents transfer, melodies, PDF data, Chara-den, Word/Excel/PowerPoint files
 - Kisekae Tool
 - Chaku-uta[®]/Chaku-uta full[®]
 - Program of Music&Video Channel
- * "Chaku-uta" is a registered trademark of Sony Music Entertainment (Japan) Inc.

✓ INFORMATION

- When data, subject to the UIM operation restriction is set as the stand-by display, incoming/outgoing image, ring alert, etc., replacing the UIM with another one or using FOMA terminal without the UIM inserted causes the sound, image and other settings to reset to the default values. In this case, the sound or image actually generated or appears may be different from those set. If the UIM used when downloading the data is inserted, the data operation restriction is canceled and the original settings are restored (When data has been used for Set random image, the settings may be canceled).
- The UIM operation restriction is not enabled for data obtained via infrared communication, iC transmission, microSD memory card or data link software or still images/movies taken with the built-in camera.
- The settings below are saved to UIM. When UIM is replaced, the set contents saved in the inserted UIM are enabled.
 - My phone number
 - SMS settings (except "SMS report request")
 - DoCoMo Cert/User Certificate of Manage certificate
 - Select language, UIM (FOMA card), PLMN setting

◆ Functional differences in UIM types

When using UIM (Blue) in FOMA terminal, note that it differs in the items listed below from UIM (Green/White).

Item	UIM (Blue)	UIM (Green/White)	Page
Number of savable digits of phone numbers in UIM phonebook	Up to 20 digits	Up to 26 digits	P78
User certificate download to use FirstPass	Unavailable	Available	P167
WORLD WING service	Unavailable	Available	P386
Service Numbers	Unavailable	Available	P373

WORLD WING

WORLD WING is DoCoMo's international roaming service that allows to make/receive calls overseas with the same mobile phone number using a FOMA terminal compatible with UIM (green/white) and services.

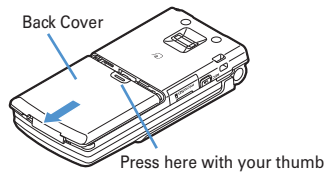
- * If you subscribed to FOMA service on or after September 1, 2005, separate subscription is not required to use WORLD WING. Note that, if you declined to use WORLD WING at subscription to FOMA service or canceled it, you need subscription.
- * If you subscribed to FOMA service on or before August 31, 2005, but not to WORLD WING, separate subscription is required to use WORLD WING.
- * There are some charging plans unavailable.
- * If UIM (Green/White) is misplaced or stolen overseas, immediately contact DoCoMo and request for suspension of usage. Please refer to the phone number for "General Inquiries" on the back of this manual for contact information. Be careful that you are charged also for calls and/or communications, if any, occurring after misplacement or stealage.

Attaching/removing battery pack

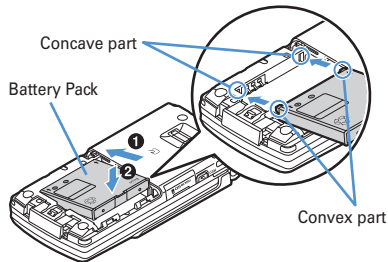
- After turning the power OFF, fold FOMA terminal and hold it with your hand.
- Removing the battery pack may cause reservation of Software update to be canceled. When the date and time is set with Adjust time/time diff set to "OFF" in Date & time, removing the battery pack may delete the date and time.

■ Attaching

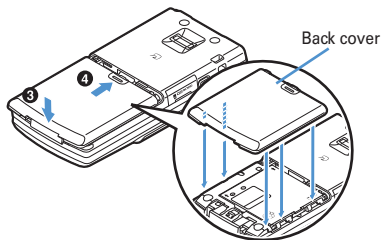
- ① Remove the back cover by sliding it about 2 mm in the direction of the arrow while pressing it with your thumb.



- ② With the label side of the battery pack face up, align the convex part of the battery pack with the concave part of FOMA terminal, insert the battery pack in the direction of ① and press it in the direction of ② until it fits.

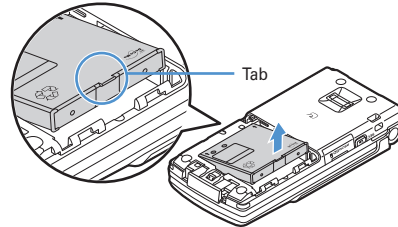


- ③ Bring the 4 tabs of the back cover to meet the cuts in FOMA terminal. Slide in the direction of ④ to fit in while pressing in the direction of ③ so that no gap is generated between FOMA terminal and the back cover.



■ Removing

- ① Perform Step ① in Attaching battery pack.
- ② Hold and raise the battery pack tab in the direction shown by the arrow to remove the battery pack.



✓ INFORMATION

- Forcing the battery pack into FOMA terminal may damage the FOMA terminal jack.
- FOMA terminal or back cover may be damaged if you attach or remove the battery pack by a method except the procedures above or if you press too hard.

❖ For better battery pack performance

- **Do not charge the battery for an extended period (several days) with the FOMA terminal turned ON.** After charging has completed with FOMA terminal turned ON, the power is supplied to the terminal from the battery pack. If FOMA terminal is left in that state for a long time, the battery pack may run out causing the low battery alert to sound after using only a short period of time. In such a case, remove FOMA terminal from the AC adapter, desktop holder or DC adapter and then reconnect it and charge the battery again.
- **To promote environmental conservation, return your used battery pack to NTT DoCoMo sales outlets, our corporate agencies or the shops that collect used battery in your community.**



Charging the FOMA terminal

The battery pack does not have a full charge at time of purchase. Use AC/DC adapter for FOMA terminal to charge the battery before using FOMA terminal.

- To get the maximum performance from F905i, use battery pack F10.
- For handling the battery pack F10, see the battery pack manual.

❖ Charging times (approximate)

The times below are the times for charging an empty battery pack with F905i's power switched OFF. Charging with the terminal ON or under low temperature requires longer time.

AC adapter	Approx. 150 min.
DC adapter	Approx. 150 min.

❖ Operation times on full charge (approximate)

The times below vary by the charging method and operating environment.

Continuous stand-by time (stationary)	Approx. 550 H
Continuous call time (during a voice call)	Approx. 190 min
Continuous stand-by time (moving)	Approx. 400 H
Continuous call time (during a videophone call)	Approx. 100 min.
One Seg watching time	Approx. 300 min.

- Continuous call time indicates the approximate time that the phone can send or receive radio waves normally.
- Continuous stand-by time indicates the approximate time that the phone can receive radio waves normally with F905i closed. Call, communication or stand-by times may be about half depending on factors such as the battery pack charging condition, function settings, operating environment such as ambient temperature, and signal condition in the area of use (whether the signal is weak or absent). Call, communication or stand-by times are reduced by performing i-mode communication. And, even with no voice calls or i-mode communications made, the continuous call and continuous stand-by times are reduced by making PushTalk session, creating i-mode mail, activating downloaded i-appli, using i-appli stand-by display, performing data communication or multiaccess, using camera, playing movie/i-motion, obtaining or playing Music&Video Channel program, playing music with Music player, activating or video recording of 1Seg, or doing other operations.

❖ Battery pack life

- The battery pack is a consumable part. Each time it is charged, time available with each charging reduces.
- When a time available with each charging is reduced to about a half from that of a new battery, replacement of the battery is recommended because it is near the end of life. The battery pack may swell out as it comes to near the end of its lifetime depending on the usage conditions, but it is not a problem.
- The battery pack's life may be reduced by using i-appli or videophone or watching One Seg while charging.

❖ Battery charge

- For details, see the operation manuals for FOMA AC Adapter 01/02 (optional), FOMA AC Adapter 01 for Global use (optional) or FOMA DC Adapter01/02 (optional).
- FOMA AC Adapter 01 is applicable only to 100V AC.
- Though FOMA AC Adapter 02/FOMA AC Adapter 01 for Global use is applicable to 100-240V AC, AC Adaptor has a plug dedicated to 100V AC (for domestic use). When using the adapter overseas, a conversion plug adapter applicable to a country you are going to stay is necessary. Do not charge the battery using a transformer for overseas travel.

✓ INFORMATION

- Some i-appli remains operating even when FOMA terminal is folded, consuming power. In that case, the call, communication or stand-by time may be reduced.
- During talking or communications, charging may not finish. Charging may not complete if you start battery charging while playing movie/i-motion, obtaining Music&Video Channel program, activating Music &Video Channel player or Music player, running i-appli. In such a case, it is recommended to end the operation, and then charge the battery.
- The charging may not be completed depending on the settings of Display light or charging method, such as charging the battery with the FOMA terminal open when Normal use is set to "Always" in Display light time of Display light. In such a case, it is recommended to charge the battery with the FOMA terminal folded.
- It is normal for FOMA terminal, battery pack, desktop holder and AC adapter, DC adapter to become warm while charging. If you use the videophone or if you transmit/receive packets or 64K data while charging the battery, the charging may not finish normally because of temperature rise in FOMA terminal. In that case, wait until the temperature falls down and try again.

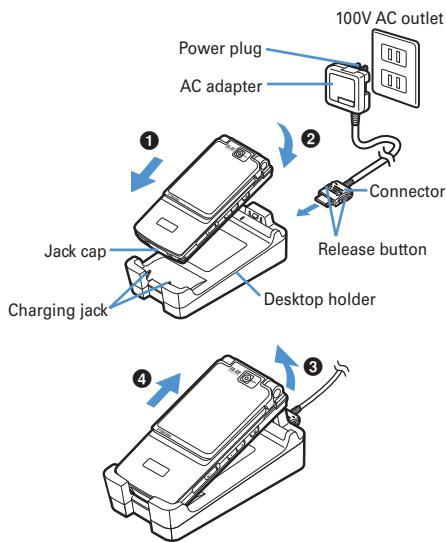
◆ Charging

When using optional FOMA AC Adapter, FOMA DC Adapter, Desktop Holder, read the related operation manuals beforehand.

- The battery pack cannot be charged without an adapter. When charging the battery pack, attach it to FOMA terminal.

■ Using desktop holder and AC adapter for charging

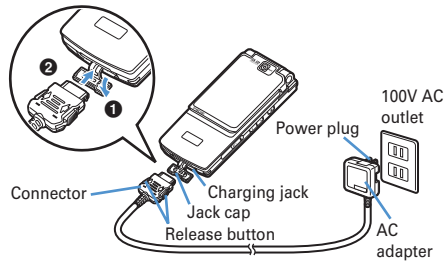
- ① Insert the AC adapter to the desktop holder, with the arrow on the AC adapter's connector facing upward.
- ② Unfold the AC adapter's power plug and insert it into a 100V AC outlet.
- ③ Align FOMA terminal with the desktop holder's charging terminal (1), and insert FOMA terminal in the direction of the arrow (2) until it clicks.
 - Before mounting FOMA terminal onto the desktop holder, fold it and close the terminal cap.
- ④ When charging is over, lift FOMA terminal (3) while holding the desktop holder and remove the terminal by pulling it in the direction shown by arrow (4).



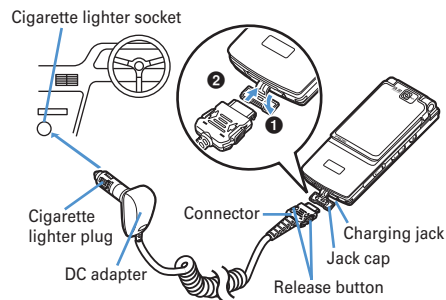
■ Charging with AC adapter or DC adapter

- ① Open terminal cap (1) of FOMA terminal, hold the connector horizontally with the arrow facing upward and insert it to terminal. (2)
 - If the terminal cap is hard to open, open FOMA terminal and retry.
- ② Unfold the AC adapter's power plug and insert it into a 100V AC outlet.
 - Insert the DC adapter cigarette lighter plug into the vehicle's cigarette lighter socket.
- ③ After charging has completed, disconnect the AC adapter from the outlet or the cigarette lighter plug from the cigarette lighter socket, and press the release buttons on both sides of the connector and remove the connector horizontally from FOMA terminal.

<AC adapter>



<DC adapter>



✓ INFORMATION

- Insertion or removal of the AC and DC adapter connectors should be done slowly and carefully so that they are not given excessive force. When disconnecting the connector, pull it straight while pressing the release button. Applying an excessive force to disconnect the connector may give damage to it.
- When FOMA terminal is not used or you are leaving the car, disconnect the cigarette lighter plug of the DC adapter from the cigarette lighter socket and disconnect the DC adapter connector from FOMA terminal.
- The fuse (2A) of the DC adapter is a consumable part. Contact your nearest automotive supply store for a replacement.

❖ Operations and precautions for charging

When charging starts, a charge start alert sounds, light turns ON and the battery icon (the default battery icon) on the display or sub-display blinks. When charging is over, a charge completion alert sounds, the light turns off and the battery icon stops blinking.

- When resuming the battery charging, the light turns on in red. In some environments, the light may not light immediately when charging starts; this is normal and not a malfunction. However, if the light fails to light after a while, disconnect FOMA terminal from the AC adapter, desktop holder or DC adapter then connect it again to start charging. Contact the sales outlet such as DoCoMo Shop if the light fails to light for a while after charging starts.

- If the light is used for mail reception, camera shooting, etc. during charging, the light turns to a different color, but it is lit in red soon.

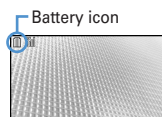
When the light blinks while charging in cases except these reasons → P428 "Troubleshooting"

- When attaching the fully charged battery pack to the FOMA terminal and connecting it to the AC adapter, desktop holder or DC adapter, the light may turn on for a moment and turn off. This is normal and not a malfunction.
- During a call, communication or PushTalk session, in Silent mode or Public mode or with Charge alert "OFF", the charge alert does not sound at start or completion of charge.

Remaining battery level

Checking remaining battery level

A battery icon appearing on the top of the display shows an approximate remaining battery level.



- ▢ (Battery level 3) : Ample charge
- ▢ (Battery level 2) : Low charge.
- ▢ (Battery level 1) : Battery level very low. Charging required

- The battery icon set by default varies by the color of the FOMA terminal.
- When FOMA terminal is folded, the remaining battery level can be checked on the sub-display.

❖ When battery is almost exhausted

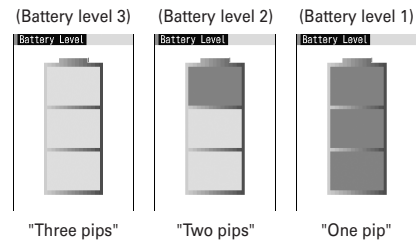
A message indicating low battery appears on the display. Pressing any one of [M], [P], [E] keys deletes the message temporarily. After a period of time, a battery alarm sounds from the speaker and all icons on the top of the display start blinking. The power is turned off after approximately 1 minute. These operations stop when charging starts; press [E] to immediately stop the battery alarm.

- During a call, the message remains displayed and the battery alarm keeps sounding from the earpiece. After approximately 20 seconds, the call is terminated, the battery alarm sounds from the speaker and all icons on the top of the display blink.
- With the FOMA terminal folded, the sub-display shows "Low battery".

◆ Checking remaining battery level by sound and display <Battery level>

[M] ▶ [Settings & NW services] ▶ [7] [7] [5]

The battery level appears and the keypad sound (→ P92) is emitted depending on the battery level. After a while, the screen returns to the menu list.



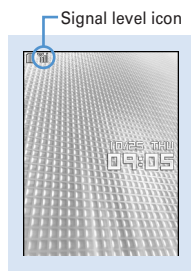
Power ON/OFF
Turning power ON/OFF

Turning power ON

1 [Power] (2 sec. or more)

The wake-up screen appears and the stand-by display appears. [Power] appears at the bottom of the display while reading UIM.

- A signal level icon appearing in the top of the display shows the approximate received signal level.



Icon		
Received signal level	Strong \longleftrightarrow Weak	Outside the service area and where radio waves are hard to reach

- The battery icon set by default varies by the color of the FOMA terminal.
- With the FOMA terminal folded, the reception level can be confirmed on the sub-display.

Turning power OFF

1 [Power] (2 sec. or more)

Operations to perform after turning the power ON for the first time

When turning the power ON for the first time, operate in the order of "AdvancedMode setting" → "Initial setting". The settings made can be changed later.

- When initialization is finished, a confirmation screen of software update function appears. Press [Power] to display the stand-by screen.

AdvancedMode setting

1 "Yes" or "No" on the confirmation screen.

- When selecting "Yes", "AdvancedMode" of Kisekai Tool is set. →P406
If you cancel the confirmation screen by pressing [Cancel] or [Power], the confirmation screen reappears when the power is turned ON the next time.

Default setting

MENU [Settings & NW services] 779

- Set Password and Request permit/deny. When [Yes] or [Cancel], [Power] is pressed before setting terminal security code or Request permit/deny, a confirmation screen appears asking if you exit. If you exit by selecting "Yes", this confirmation screen reappears when the power is turned ON the next time.

1 Set the required items on the initial setting screen ▶ [Power]

Date & time : Set the date and time. →P41

Password : Change the terminal security code, after performing authentication. →P111

Fingerprint : After performing authentication, register a fingerprint to be used for authentication. →P113

Keypad sound : Set a confirmation sound to be generated when a key is pressed. →P92

Font size setting : Specify size of characters for Phonebook or mail. →P106


Request permit/deny : Set if you provide location information after performing authentication. To permit Location request only in a specified period of time, make settings to Permission period of Request permit/deny. →P246

INFORMATION

- When turning FOMA terminal ON, do not touch the fingerprint sensor with fingers before the stand-by display appears.
- When the UIM is replaced, authentication is required after turning on the FOMA terminal. When authentication has succeeded, the stand-by display appears. If an incorrect terminal security code is entered 5 times consecutively or if authentication has failed 5 times consecutively when Fingerprint access is "ON", the power is automatically turned OFF (the power can be turned ON again).
- If no operations are carried out for approximately 5 minutes with the FOMA terminal open, the display is automatically deactivated (power saving mode). The same situation occurs during voice call. The display light is turned on again if there is any operation or incoming call.

Select language

Switching to English

1  ► [Settings & NW services] ► **2** **7** **3** ► **1** or **2**



✓INFORMATION

- The setting of Select language are saved to UIM. When a UIM is replaced, the setting switches to that saved in the inserted UIM.

Date & time

Setting date and time

You can set so that the time or time difference is automatically corrected or directly enter the date and time. With automatic correction set, the time is corrected when receiving the time information from the DoCoMo's network in Japan or the time difference correction information from the telecommunications carrier used overseas.

1  ► [Settings & NW services] ► **7** **2** **1** ► Set the required items ► 



Adjust time adjust : Set if you automatically correct time.

- When "ON", Offset can be set.
- When "OFF", set the date and time. Time zone and Summer time may also be set.

Offset : When "+", the displayed time is always set forward the specified period of time from the corrected time. When "-", the displayed time is always set back the specified period of time from the corrected time.

Date : The date can be entered up between January 1, 2000 and December 31, 2050.

Time : Enter the time in the 24-hour format.

Time zone : When moving to a place with time difference, set the time zone without changing the date and time settings.

- Time difference from the previously set time zone is calculated and displayed.
- Set "GMT+09:00" in Japan.

Summer time : When "ON", the displayed time is set forward one hour from the specified time.

✓INFORMATION

- With Adjust time/time diff set to "ON", the time or time difference is corrected when FOMA terminal is turned ON or at other timings. With no UIM inserted or for some signal conditions, the time is not corrected. During execution of certain i-appli, time correction may be disabled.
- Even when Adjust time/time diff is set to "ON", the corrected time may have an error of several seconds. Time difference correction may not be performed for some network of the telecommunications carrier used overseas.
- When time correction is made overseas with Auto time adjust set to "ON", a message to that effect appears. After time is corrected with Auto time adjust, times displayed for call histories and sent messages are local times.
- With Auto time adjust and Two time zone clocks set to "ON", two time zone clocks appear in 24 hour when time correction information is received from a network of the telecommunications carrier used overseas.
- After setting the date and time with Auto time adjust set to "OFF", removing the battery pack or leaving it exhausted for a long time may cause the date and time to be deleted. In this case, set the date and time again after charging the battery.
- If correction has never been performed and date and time are displayed with "--" or "?", clocks or Flash graphics using the date and time information do not appear correctly. The functions below are not available :
 - SSL session (authentication)
 - Certificate download
 - Message search (With calendar)
 - Downloading Chaku-uta full[®] with replay restriction set for copyright protection or downloading and playing i-motion.
 - i-appliDX, i-appli Auto start
 - Playing the program that program setting, obtaining or playing restrictions of Music&Video Channel is set.
 - Playing WMA files with replay restriction under copyright protection
 - Request permit/deny (GPS)
 - Alarm clock, Scheduler (including data transmission of schedule and displaying schedule data)
 - Timed theme, Programed activation, Update, Auto power ON, Auto power OFF, Software update
 - Watching/recording reservation of 1Seg, playing Uta-hodai, updating replay expiration, setting ring tone
- If automatic correction of date and time has never been performed and date and time are displayed with "--" or "?", the functions below do not record the date and time, in stead display them as "----/--/--" or "-----". A segmental number furthermore (number to segmentalize) may be appended.
 - Date and time of sent message, unsent message, and mail logs, date and time of saving created message template
 - Date and time of saving downloaded data or file
 - Date and time of i-appli download
 - Received calls, Redial, Recorded messages/Voice memo
 - Date and time in the file name of still images, movies, sound files or data read with Bar code reader
 - Reception date and time of ToruCa, Location history (GPS)
 - Replay expiration of detail information of Uta-hodai

Caller ID notification**Notifying your phone number to the other party**

You can set FOMA terminal to display your number (Caller ID) on the other party's terminal when making a voice call, videophone call or PushTalk call.

- For details, see "Mobile Phone User's Guide [Network Services]".
- Caller ID is your important information. Carefully consider whether you want to include caller ID information when making a call.
- The caller ID is displayed only when the phone of the other party is a digital mobile phone, etc. enabled to display the caller ID.

1 **[Settings & NW services]**

- Press [Settings & NW services] and select "Yes" to check the current settings.

2 or

Priority of caller ID notification

There are multiple methods to notify your phone number to the other party. If you set or perform these methods simultaneously, the caller ID operations are performed with the priorities below. The displayed setting and actual Notify/Not notify may differ.

- ① When whether to notify a caller ID in Call option for the dialing is set → P52, 68
- ② When "186"/"184" is prefixed to a phone number → P50
- ③ Caller ID settings for the Phonebook entry → P84
- ④ Activate/Deactivate of Caller ID notification

INFORMATION

- If an announcement of requesting caller ID is heard when making a call, make a call again after setting your caller ID to be notified.

User information**Checking your own phone number**

MENU [Phonebook & Logs] 9

You can check your phone number (My phone number), Name, Mail address, etc.

1 **[User information]**

Check during a call, etc. :

INFORMATION

- For details of how to check i-mode mail address, see "Mobile Phone Users Guide [i-mode]".
- When 2in1 is ON in Dual mode, you can press to switch User information between Number A and B.
- With 2in1 ON, when replacing the UIM (2in1 subscriber to 2in1 subscriber), set 2in1 to OFF then set it to ON again to obtain a correct Number B. Also, when replacing the UIM (2in1 subscriber to 2in1 non-subscriber), set 2in1 to OFF to update to the new user information. → P376

*3 International Commission on Non-Ionizing Radiation Protection.

◆ Declaration of Conformity

The product "FOMA F905i" is declared to conform with the essential requirements of European Union Directive 1999/5/EC Radio and Telecommunications Terminal Equipment Directive 3.1(a), 3.1(b) and 3.2. The Declaration of Conformity can be found on <http://www.fmworld.net/product/phone/doc/>.

This mobile phone complies with the EU requirements for exposure to radio waves.

Your mobile phone is a radio transceiver, designed and manufactured not to exceed the SAR* limits** for exposure to radio-frequency (RF) energy, which SAR* value, when tested for compliance against the standard was ●●●●W/Kg. While there may be differences between the SAR* levels of various phones and at various positions, they all meet*** the EU requirements for RF exposure.

* The exposure standard for mobile phones employs a unit of measurement known as the Specific Absorption Rate, or SAR.

** The SAR limit for mobile phones used by the public is 2.0 watts/kilogram (W/Kg) averaged over ten grams of tissue, recommended by The Council of the European Union. The limit incorporates a substantial margin of safety to give additional protection for the public and to account for any variations in measurements.

*** Tests for SAR have been conducted using standard operation positions with the phone transmitting at its highest certified power level in all tested frequency bands. Although the SAR is determined at the highest certified power level, the actual SAR level of the phone while operating can be well below the maximum value. This is because the phone is designed to operate at multiple power levels so as to use only the power required to reach the network. In general, the closer you are to a base station antenna, the lower the power output.

◆ Federal Communications Commission (FCC) Notice

- This device complies with part 15 of the FCC rules. Operation is subject to the following two conditions :
 - ① this device may not cause harmful interference, and
 - ② this device must accept any interference received, including interference that may cause undesired operation.
- Changes or modifications made in or to the radio phone, not expressly approved by the manufacturer, will void the user's authority to operate the equipment.

◆ Industry Canada (IC) Notice

- Operation is subject to the following two conditions :
 - ① this device may not cause interference, and
 - ② this device must accept any interference, including interference that may cause undesired operation of the device.

◆ FCC and IC RF Exposure Information

This model phone meets the U.S. Government's and Canadian Government's requirements for exposure to radio waves.

This model phone contains a radio transmitter and receiver. This model phone is designed and manufactured not to exceed the emission limits for exposure to radio frequency (RF) energy as set by the FCC of the U.S. Government and IC of the Canadian Government. These limits are part of comprehensive guidelines and establish permitted levels of RF energy for the general population. The guidelines are based on standards that were developed by independent scientific organizations through periodic and thorough evaluation of scientific studies.

The exposure standard for wireless mobile phones employs a unit of measurement known as the Specific Absorption Rate (SAR). The SAR limit set by the FCC and IC is 1.6 W/kg. Tests for SAR are conducted using standard operating positions as accepted by the FCC and IC with the phone transmitting at its highest certified power level in all tested frequency bands. Although the SAR is determined at the highest certified power level, the actual SAR level of the phone while operating can be well below the maximum value. This is because the phone is designed to operate at multiple power levels so as to use only the power required to reach the network. In general, the closer you are to a wireless base station antenna, the lower the power output level of the phone.

Before a phone model is available for sale to the public, it must be tested and certified to prove to the FCC and IC that it does not exceed the limit established by the U.S. and Canadian government-adopted requirement for safe exposure. The tests are performed on position and locations (for example, at the ear and worn on the body) as required by FCC and IC for each model. The highest SAR value for this model phone as reported to the FCC and IC, when tested for use at the ear, is 0.163 W/kg, and when worn on the body, is 0.150 W/kg. (Body-worn measurements differ among phone models, depending upon available accessories and FCC and IC requirements). While there may be differences between the SAR levels of various phones and at various positions, they all meet the U.S. and Canadian government requirements.

The FCC and IC has granted an Equipment Authorization for this model phone with all reported SAR levels evaluated as in compliance with the FCC and IC RF exposure guidelines. SAR information on this model phone is on file with the FCC and can be found under the Equipment Authorization Search section at <http://>

www.fcc.gov/oet/ (please search on FCC ID EJE-FOMA-F905I).

For body worn operation, this phone has been tested and meets the FCC and IC RF exposure guidelines when used with an accessory designated for this product or when used with an accessory that contains no metal and which positions the handset at a minimum distance of 1.5 cm from the body.

* In the United States and Canada, the SAR limit for wireless mobile phones used by the general public is 1.6 Watts/kg (W/kg), averaged over one gram of tissue. SAR values may vary depending upon national reporting requirements and the network band.

◆ Important Safety Information

AIRCRAFT

Switch off your wireless device when boarding an aircraft or whenever you are instructed to do so by airline staff. If your device offers flight mode or similar feature consult airline staff as to whether it can be used on board.

DRIVING

Full attention should be given to driving at all times and local laws and regulations restricting the use of wireless devices while driving must be observed.

HOSPITALS

Mobile phones should be switched off wherever you are requested to do so in hospitals, clinics or health care facilities. These requests are designed to prevent possible interference with sensitive medical equipment.

PETROL STATIONS

Obey all posted signs with respect to the use of wireless devices or other radio equipment in locations with flammable material and chemicals. Switch off your wireless device whenever you are instructed to do so by authorized staff.

INTERFERENCE

Care must be taken when using the phone in close proximity to personal medical devices, such as pacemakers and hearing aids.

Pacemakers

Pacemaker manufacturers recommend that a minimum separation of 15 cm be maintained between a mobile phone and a pace maker to avoid potential interference with the pacemaker. To achieve this use the phone on the opposite ear to your pacemaker and does not carry it in a breast pocket.

Hearing Aids

Some digital wireless phones may interfere with some hearing aids. In the event of such interference, you may want to consult your hearing aid manufacturer to discuss alternatives.

For other Medical Devices :

Please consult your physician and the device manufacturer to determine if operation of your phone may interfere with the operation of your medical device.

Export Administration Regulations of Japan and the U.S.

This product and its accessories may be under coverage of the Export Administration Regulations of Japan ("Foreign Exchange and Foreign Trade Control Laws" and the related laws and regulations). Also, this product and its accessories are under coverage of Export Administration Regulation. When exporting this product and its accessories, take necessary procedures on your responsibility and expense. For details, contact Ministry of Economy, Trade and Industry of Japan or US Department of Commerce.