

## Copyright

Fujitsu Limited has made every effort to ensure the accuracy and completeness of this document. However, as ongoing development efforts are continually improving the capabilities of our products, we cannot guarantee the accuracy of the contents of this document. We disclaim liability for errors, omissions or future changes.

LifeBook is a trademark of Fujitsu Limited.

Microsoft, Windows, MS, Windows XP, Windows 7 and Windows 8 are registered trademarks of the Microsoft Corporation of the United States in the United States and other countries.

Phoenix is a registered trademark of Phoenix Technologies Corporation of the United States.

ExpressCard™ module technology is a registered trademark of Personal Computer Memory Card International Association.

Copyright© Microsoft Corporation 2013, All rights reserved.

Copyright© Phoenix Technologies 2013, Ltd., All rights reserved.

Other product names are trademarks or registered trademarks of their respective companies.

Copyright © Fujitsu Limited 2013. All rights reserved. No part of this publication may be copied, reproduced or translated, without the prior written consent of Fujitsu Limited. No part of this publication may be stored or transmitted in any electronic form without the written consent of Fujitsu Limited.

This device complies with Part 15 of the FCC rules. Operations are subject to the following two conditions:

- (1) This device may not be allowed to cause harmful interference.
- (2) This device must accept any interference received, including interference that may cause undesired operation.



Manufactured under license from DTS Licensing Limited. DTS, the Symbol, & DTS and the Symbol

together are registered trademarks, and DTS Boost is a trademark of DTS (BVI) Limited (in Hong Kong and China) and DTS, Inc. (outside of Hong Kong and China).  
© DTS, Inc. All Rights Reserved.

Website: [hk.fujitsu.com/pc](http://hk.fujitsu.com/pc)



**DECLARATION OF CONFORMITY**  
according to FCC Part 15

---



## IMPORTANT SAFETY INSTRUCTIONS

1. Read these instructions carefully. Save these instructions for future reference.
2. Follow all warnings and instructions marked on the product.
3. Unplug this product from the wall outlet before cleaning. Do not use liquid cleaners or aerosol cleaners. Use a damp cloth for cleaning.
4. Do not use this product near water.
5. Do not place this product on an unstable cart, stand or table. The product may drop, causing serious damage to the product.
6. Slots and openings in the cabinet and the back or bottom are provided for ventilation; to ensure reliable operation of the product and to protect it from overheating, these openings must not be blocked or covered. The openings should never be blocked by placing the product on a bed, sofa, rug or other similar surface. This product should never be placed near or over a radiator or heat register or in a built-in installation unless proper ventilation is provided.
7. This product should be operated from the type of power indicated on the marking label. If you are not sure of the type of power available, consult your dealer or local power company.
8. Do not allow anything to rest on the power cord. Do not locate this product where persons will walk on the cord.
9. If an extension cord is used with this product, make sure that the total ampere rating of the equipment plugged into the extension cord does not exceed the extension cord ampere rating. Also, make sure that the total rating of all products plugged into the wall outlet does not exceed 15 amperes.
10. Never push objects of any kind into this product through cabinet slots as they may touch dangerous voltage points that could result in a fire or electric shock. Never spill liquid of any kind on the product.
11. Do not attempt to service this product yourself, as opening or removing covers may expose you to dangerous voltage points or other risks. Refer all servicing to qualified service personnel.
12. Unplug this product from the wall outlet and refer servicing to qualified service personnel under the following conditions:
  - a. When the power cord or plug is damaged or frayed.
  - b. If liquid has been spilled into the product.
  - c. If the product has been exposed to rain or water.
  - d. If the product does not operate normally when the operating instructions are followed. Adjust only those controls that are covered by the operating instructions since improper adjustment of other controls may result in damage and will often require extensive work by a qualified technician to restore the product to normal condition.
  - e. If the product has been dropped or the cabinet has been damaged.
  - f. If the product exhibits a distinct change in performance, indicating a need for service.

13. **CAUTION: When replacing the battery, be sure to install it with the polarities in the correct position. There is a danger of explosion if the battery is replaced with an incorrect type or is mistreated. Do not recharge, disassemble or dispose of in fire. Replace only with the same or equivalent type recommended by the manufacturer. Dispose of the used battery according to the manufacturer's instructions.**
  
14. Use only the proper type of power cord set (provided in the accessories box) for this unit. It should be detachable type and with respective certification.

 **CAUTION**

- Changes or modifications not expressly approved by Fujitsu could void this user's authority to operate the equipment.

## FCC NOTICES

### Notice to Users of Radios and Television

These limits are designed to provide reasonable protection against harmful interference in a residential installation. This equipment generates, uses, and can radiate radio frequency energy and, if not installed and used in accordance with the instructions, may cause harmful interference to radio communications. However, there is no guarantee that interference will not occur in a particular installation. If this equipment does cause harmful interference to radio or television reception, which can be determined by turning the equipment off and on, the user is encouraged to try to correct the interference by one or more of the following measures:

- Reorient or relocate the receiving antenna.
- Increase the separation between the equipment and receiver.
- Connect the equipment into an outlet that is on a different circuit than the receiver.
- Consult the dealer or an experienced radio/TV technician for help.

Shielded interconnect cables must be employed with this equipment to ensure compliance with the pertinent RF emission limits governing this device.

### Notice to Users of the US Telephone Network\*

Your LifeBook notebook may be supplied with an internal modem which complies with Part 68 of the FCC rules. On this notebook is a label that contains the FCC Registration Number and the Ringer Equivalence Number (REN) for this

equipment among other information. If requested, the user must provide their telephone company with the following information:

1. The telephone number to which the notebook is connected.
2. The Ringer Equivalence Number (REN) for this equipment.
3. That the equipment requires a standard modular jack type USOC RJ-11C which is FCC Part 68 compliant.
4. The FCC Registration Number.

This equipment is designed to be connected to the telephone network or premises wiring using a standard modular jack type USOC RJ-11C which is FCC Part 68 compliant and a line cord between the modem and the telephone network with a minimum of 26AWG.

The REN is used to determine the number of devices that you may connect to your telephone line and still have all of those devices ring when your number is called. Too many devices on one line may result in failure to ring in response to an incoming call. In most, but not all, areas the sum of the RENs of all of the devices should not exceed five (5). To be certain of the number of devices you may connect to your line, as determined by the RENs, contact your local telephone company.

If this equipment causes harm to the telephone network, your telephone company may discontinue your service temporarily. If possible, they will notify you in advance. If advance notice is not practical they will notify you as soon as possible. You will also be advised of your right to file a complaint with the FCC.

This fax modem also complies with fax branding requirements per FCC Part 68.

Your telephone company will probably ask you to disconnect this equipment from the telephone network until the problem is corrected and you are sure that the equipment is not malfunctioning.

\* For model with modem only.

This equipment may not be used on coinoperated telephones provided by your telephone company. Connection to party lines is subject to state tariffs. Contact your state's public utility commission, public service commission or corporation commission for more information.

This equipment includes automatic dialing capability. When programming and/or making test calls to emergency numbers:

- Remain on the line and briefly explain to the dispatcher the reason for the call.
- Perform such activities in off-peak hours, such as early morning or late evening.

FCC rules prohibit the use of non-hearing aid compatible telephones in the following locations or applications:

- All public or semipublic coin-operated or credit card telephones.
- Elevators, highways, tunnels (automobile, subway, railroad or pedestrian) where a person with impaired hearing might be isolated in an emergency.
- Places where telephones are specifically installed to alert emergency authorities such as fire, police or medical assistance personnel.
- Hospital rooms, residential health care facilities, convalescent homes and prisons.
- Workstations for the hearing impaired.
- Hotel, motel or apartment lobbies.
- Stores where telephones are used by patrons to order merchandise.
- Public transportation terminals where telephones are used to call taxis or to reserve lodging or rental cars.
- In hotel and motel rooms as at least ten percent of the rooms must contain hearing aid compatible telephones or jacks for plug-in hearing aid compatible telephones which will be provided to hearing impaired customers on request.

## DOC (INDUSTRY CANADA) NOTICES

### Notice to Users of Radios and Television

This Class B digital apparatus meets all requirements of the Canadian Interference Causing Equipment Regulations.

### Notice to Users of the Canadian Telephone Network\*

The Canadian Industry Canada label identifies certified equipment. This certification means that the equipment meets certain telecommunications network protective, operational, and safety requirements. The Department does not guarantee the equipment will operate to the user's satisfaction.

LifeBook notebooks are supplied with an internal modem which complies with the Industry Canada certification standards for telecommunication network protection and safety requirements. Before connecting this equipment to a telephone line the user should ensure that it is permissible to connect this equipment to the local telecommunication facilities. The user should be aware that compliance with the certification standards does not prevent service degradation in some situations.

Repairs to telecommunication equipment should be made by a Canadian authorized maintenance facility. Any repairs or alterations not expressly approved by Fujitsu or any equipment failures may give the telecommunication company cause to request the user to disconnect the equipment from the telephone line.

The connecting arrangement code for this equipment is CA11A.

The Load Number assigned to each telephone terminal device denotes the percentage of the total load to be connected to a telephone loop or circuit which is used by the device to prevent overloading. The termination on a loop may consist of any combination of devices such that the total of the load numbers of all devices does not exceed 100.

\* For model with modem only



## **ENERGY STAR® Compliance Notice to Users of Radios and Television**

(The following is pending certification at time of publication). Your Fujitsu system is an ENERGY STAR® qualified mobile PC. By choosing a computer with the latest energy saving technology, you're helping to preserve our environment for future generations. ENERGY STAR is a joint program of the U.S. Environmental Protection Agency, U.S. Department of Energy, Natural Resources Canada, and other governments around the world helping us save money while protecting the environment through energy efficient products and practices. With energy costs and global warming top-of-mind for consumers, Fujitsu is committed to offering solutions that help consumers conserve energy and improve the quality of our environment.

### **Sleep Mode:**

You will notice that your computer is initially set so that the display turns off after 15 minutes of user inactivity, and the computer goes into Sleep mode after 20 minutes of user inactivity. When going into Sleep mode, the computer also reduces the speed of any active Ethernet network links. To "wake" the computer from Sleep mode, press the Suspend/ Resume Button.

### **Energy saving benefits:**

Fujitsu ENERGY STAR qualified mobile PCs use about half as much electricity as standard equipment – saving half in utility costs. But more than that, ENERGY STAR also makes a difference for the environment. Did you know that the average house can be responsible for twice the greenhouse gas emissions as the average car? That's because every time you flip on a light switch, run your dishwasher, or turn on your PC, you use energy, which means more greenhouse gas emissions from power plants. So the more energy we can save through energy efficiency, the more we help to reduce greenhouse gases and the risks of global warming.

To learn more about the important ENERGY STAR program, visit: [www.energystar.gov](http://www.energystar.gov).

**CAUTION**

- For safety, users should ensure that the electrical ground of the power utility, the telephone lines and the metallic water pipes are connected together. Users should NOT attempt to make such connections themselves but should contact the appropriate electric inspection authority or electrician. This may be particularly important in rural areas.

**UL Notice**

This unit requires an AC adapter to operate. Use only UL Listed adapter, output rating 19VDC 3.42A\* and 4.74A\*. Refer to the illustration below for the correct AC Adapter output polarity:

\* Please check with local distributor for actual

**CAUTION**

- To reduce the risk of fire, use only #26 AWG or larger telecommunications line cord.

**For Authorized Repair Technicians Only****CAUTION**

- For continued protection against risk of fire, replace only with the same type and rating fuse.

**WARNING**

- Danger of explosion if Lithium (CMOS) battery is incorrectly replaced. Replace only with the same or equivalent type recommended by the manufacturer. Dispose of used batteries according to the manufacturer's instruction.

**Proper Disposal of Battery**

Under federal, state or local law, it may be illegal to dispose of batteries by putting them in the rubbish bins or trash cans. Please take care of our environment and dispose of batteries properly. Check with your local government authority for details regarding recycling or disposing of unwanted batteries.

---



## **NOTE ON USE REQUIRED HIGH SAFETY**

This product is designed and manufactured for general use, including general office use, personal use, household use and ordinary industrial use.

This product is not designed for or intended for use under dangerous (fatal) conditions, unless extreme safety precautions are implemented.

Do not use this product without implementing high-level safety precautions.

Failure to follow this warning may result in death, personal injury, severe physical damage or other loss, if used in or near any or more of the following:

- nuclear reaction control system in a nuclear facility
- automatic flight control system in an airplane or other flight control system
- mass transport control system
- medical instruments for life support system
- missile launching control for weapon system

## **NOTE ON BACKUP DATA**

Please make a backup of the Operating System, any software programs, and created files (and update regularly).

If you send this product to Fujitsu, or any of its affiliates, suppliers, service providers or resellers for repair, Fujitsu does not guarantee the data integrity. It is your responsibility to back data up beforehand.

Fujitsu does not assume any obligation for compensation for damages, data integrity, or restoration, etc., if your data is lost for any reason, except as written in the warranty.



## AUSTRALIAN REGULATIONS

### Important Health and Safety Information

This notebook complies with the relevant safety regulations for data processing equipment. If you have questions about using your notebook in a particular area, please contact your sales outlet or our Hotline/Help Desk.

### Additional safety notes for devices with modem

## WARNING

FOR SAFETY REASONS, ONLY CONNECT EQUIPMENT WITH A TELECOMMUNICATIONS COMPLIANCE LABEL. THIS INCLUDES CUSTOMER EQUIPMENT PREVIOUSLY LABELLED PERMITTED OR CERTIFIED.

### Connection of Non Certified / Approved peripherals may result in the equipment operating outside the Australian EMI Standards.

Modems connected to the Australian telecommunications network must be operated in accordance with the Labelling Notice. This modem has been specifically configured to ensure compliance with the ACMA Standards. Do not adjust your modem or software outside the values indicated below. To do so would result in your modem being operated in a non-compliant manner.

The unit shall be connected to Telecommunication Network through a line cord, which meets the requirements of ACMA AS / ACIF S008:2006.

The equipment shall be powered through an Australian Approved mains cord set. When the Secondary Landscape Orientation of the tablet is held close to the body, the antenna must be in closed condition to avoid physical damage to the Antenna.

### Call Attempts / Retries:

Applications software shall be configured so that no more than 3 attempts are made to establish a connection to a given number (Note: if the modem can detect service tones, up to 10 attempts can be made). If the call sequence is unsuccessful, there shall be a delay of at least 30 minutes before attempting to call the number again.

Failure to set the modem and any application software used with the modem, to the values shown above will result in the modem being operated in a non-compliant manner. Consequently, this would be in violation of the Labelling Notice for this equipment and the Telecommunications Act 1997 prescribes penalties for the connection of non-compliant equipment.

## NEW ZEALAND WARNINGS

The grant of a Telepermit for any item of terminal equipment indicates only that Telecom has accepted that the item complies with minimum conditions for connection to its network. It indicates no endorsement of the product by Telecom, nor does it provide any sort of warranty. Above all, it provides no assurance that any item will work correctly in all respects with another item of Telepermitted equipment of a different make or model, nor does it imply that any product is compatible with all of Telecom's network services.

This equipment is not capable under all operating conditions of correct operation at the higher speeds for which it is designed. 56 KBPS connections are likely to be restricted to lower bit rates when connected to some PSTN implementations. Telecom will accept no responsibility should difficulties arise in such circumstances.

Immediately disconnect this equipment should it become physically damaged, and arrange for its disposal or repair.

This equipment shall not be used in any manner, which could constitute a nuisance to other Telecom customers.

This equipment shall not be set to make automatic calls to the Telecom "111" Emergency Service.

This device is equipped with pulse dialing while the New Zealand standard is DTMF tone dialing. There is no guarantee that Telecom lines will always continue to support pulse dialing. It is strongly recommended that pulse dialing is not used.

Some parameters required for compliance with Telecom's Telepermit requirements are dependent on the equipment (PC) associated with this device. The associated equipment shall be set to operate within the following limits for compliance with Telecom's Specifications:

### **For repeat calls to the same number.**

There shall be no more than 10 call attempts to the same number within any 30 minute period for any single manual call initiation and the equipment shall go on-hook for a period of not less than 30 seconds between the end of one attempt and the beginning of the next attempt.

### **For Automatic calls to different numbers.**

The equipment shall go on-hook for a period of not less than 5 seconds between the end of one attempt and the beginning of the next attempt.

### **For Automatically answered Incoming Calls.**

Incoming calls shall be answered between 3 and 30 seconds from the start of the ringing.

For correct operation, the total of the RNs of all devices connected to a single line at anytime should not exceed 5. The RN of this Equipment is 0.5.

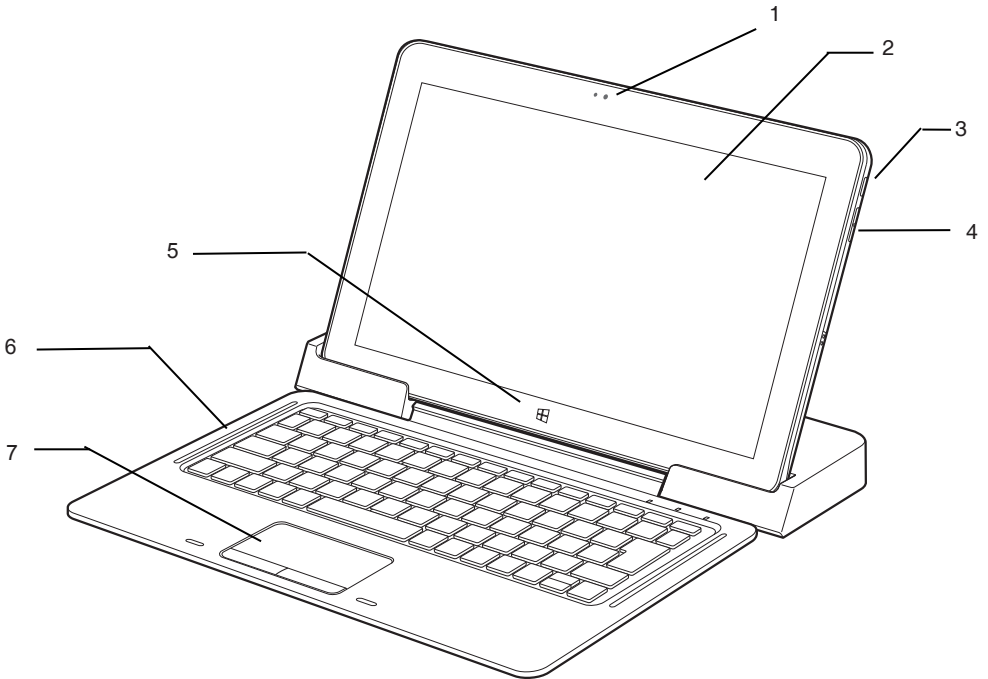
## **WARNING:**

CONNECTION OF NON CERTIFIED/  
APPROVED PERIPHERALS MAY RESULT IN  
THE EQUIPMENT OPERATING OUTSIDE THE  
NEW ZEALAND EMI STANDARDS.

# Table of Contents

<b>NAMES OF THE PARTS AND THEIR FUNCTIONS</b> .....	<b>1</b>	<b>TROUBLESHOOTING</b> .....	<b>21</b>
Front features of the notebook .....	1	Identifying the Problem .....	21
Exterior features: Side view .....	3	Specific Problems .....	21
Exterior features: Bottom view of the notebook .....	5	Troubleshooting Table .....	22
<b>STATUS INDICATOR LED</b> .....	<b>6</b>	<b>NOTE:</b>	
Wireless LAN / Bluetooth Indicator .....	6	A copy of LifeBook User's Manual is located in your Microsoft Windows OS or you can find it in Fujitsu's website at <a href="http://hk.fujitsu.com/pc">http://hk.fujitsu.com/pc</a> . You can use this LifeBook User's Manual to find out more information about the functions and features of your notebook.	
Power Indicator .....	6		
Battery Charging Indicator .....	6		
Disk Drive Access Indicator .....	6		
Num Lock Indicator .....	6		
Caps Lock Indicator .....	6		
<b>RUNNING THE Tablet PC ON ITS BATTERY</b> .....	<b>7</b>		
Recharging the battery .....	7		
Running the notebook on its battery .....	8		
Checking the power level of the battery .....	8		
<b>POWER MANAGEMEN</b> .....	<b>10</b>		
Power/Suspend/Resume Button .....	10		
Suspend Mode .....	10		
Hibernation (Save-To-Disk) Feature .....	11		
Windows Power Management .....	12		
Power Off .....	12		
<b>POWER SOURCES</b> .....	<b>13</b>		
Connecting the Power Adapter .....	13		
Power On .....	14		
Power Off .....	14		
<b>GETTING TO START DVD SHARING APPLICATION</b> .....	<b>15</b>		





(This picture is for illustration purpose only and may look different from the actual unit)

## NAMES OF THE PARTS AND THEIR FUNCTIONS

### Front and right features of the Tablet, Docking-Keyboard, and Docking-Station

#### 1. HD Camera

The location of the high definition camera.

#### 2. Display Panel

The display screen of the notebook.

#### 3. Power and Suspend/Resume Button

This button allows you to power on or off the notebook. You can use also this button to suspend notebook activity without turning off the power to it and to resume the notebook from suspend mode.

### POINT

- The phenomena described below are characteristics of LCD panels and do not indicate that LCD panels are defective.
  - The TFT color LCD screen of your notebook, composes of more than 2,350,000 picture elements (number of dots when the screen resolution is set at 1920 by 1080 pixels). It was manufactured using advanced technologies. For technical reasons, LCD screen may have pixels that do not light and pixels that are always lit.
  - LCD panels may display slight varying colors and uneven density.

---



#### 4. Volume up/down buttons

The built-in dual speakers provide stereo sound.

#### 5. Windows button

A button on glass for executing windows button function

#### 6. Keyboard

A full-function keyboard with dedicated Windows keys.

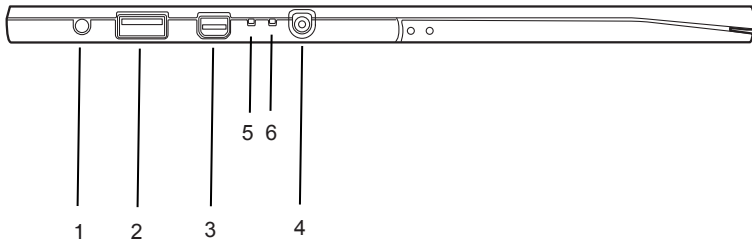
#### 7. Touch Pad

It allows you to control the display cursor (mouse pointer).



#### **WARNING**

Spill resistant keyboard does not imply the keyboard is water-proof. If liquid is spilled onto the keyboard, power off your notebook immediately and turn the notebook upside down to drain off the liquid.



(This picture is for illustration purpose only and may look different from the actual unit)

## Exterior features: Side view

### ■ Left view of the Tablet PC

#### 1. HDA Jack

It allows jack sensing of the following audio input/output devices.

- **Headphone**

It allows you to connect a Ø3.5mm headphone to it. There are commercially available headphones with different types of connector. Please check the compatibility of these headphones before purchase.

- **Microphone Jack**

Connect an external microphone. The internal microphone is disabled when you plug in an external microphone.

#### 2. USB 3.0 Port

The USB 3.0 port allows you to connect Universal Serial Bus devices. USB 3.0 devices transfer data at up to 5Gbps and is backward compatible with USB 2.0 devices. With USB charging function.

#### 3. Video/audio terminal (miniDisplayPort)

You can use this port connect to a Monitor via optional miniDisplayPort to HDMI cable or miniDisplayPort to VGA cable.

#### 4. DC Power Jack

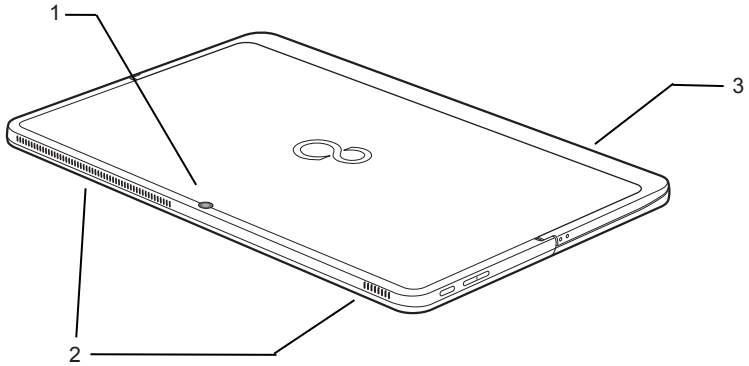
#### 5. Power Indicator (Ⓢ)

This indicator turns on when there is power to the notebook.

It turns off when the notebook is powered off. This indicator will blink if the notebook is put in suspend mode.

#### 6. Battery Charging Indicator (➔🔋)

This indicator turns on when internal battery is being charged.



(This picture is for illustration purpose only and may look different from the actual unit)

## ■ Bottom view of the Tablet PC

### 1. 5M pixels Camera

### 2. Air Vents

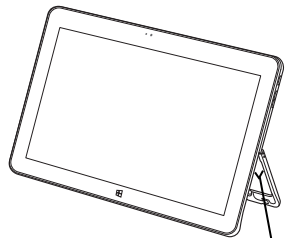
The air vents are used to cool the system to prevent overheating.

### 3. Stand for tablet

You can open stand by hand like as below, for keep tablet standing with it. Angle between tablet and stand is adjustable, and the maximum angle is 90degree.

## 🔥 CAUTION

- Do not obstruct the air vents while the system is running; doing so could cause your system to overheat.
- Surface temperature may be high during and after operation. Do not touch the surface.

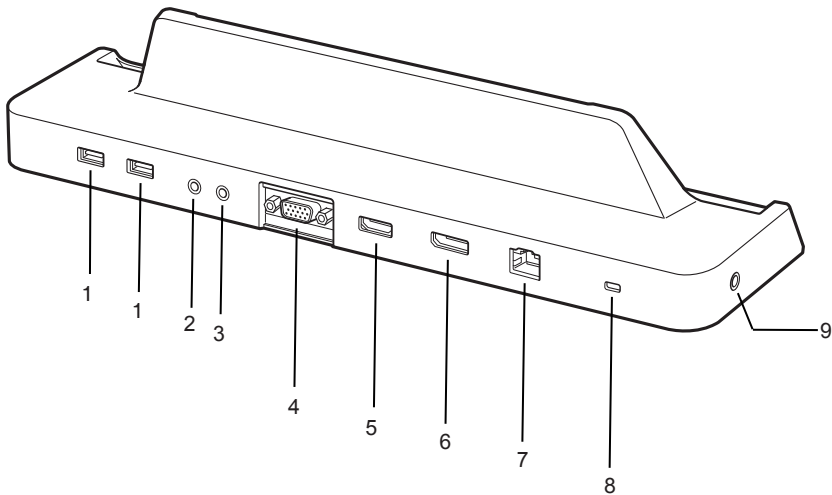


Up to 90 degree



## Exterior features: Back-side view of Docking-Station

(This picture is for illustration purpose only and may look different from the actual unit)



### 1. USB 3.0 Port

The USB 3.0 port allows you to connect Universal Serial Bus devices. USB 3.0 devices transfer data at up to 5Gbps and is backward compatible with USB 2.0 devices.

### 2 Headphone Jack

It allows you to connect a Ø3.5mm headphone to it. There are commercially available headphones with different types of connector. Please check the compatibility of these headphones before purchase.

### 3 Microphone Jack

Connect an external microphone. The internal microphone is disabled, when you plug in an external microphone.

### 4. Video output (Analog RGB)

Analog RGB output for external monitor

### 5. Video/audio terminal (HDMI)

Digital Video/audio terminal for external monitor, supporting HDMI 1.4 specification.

### 6. Video/audio terminal (Displayport)

Digital Video/audio terminal for external monitor, supporting Displayport 1.2a specification.

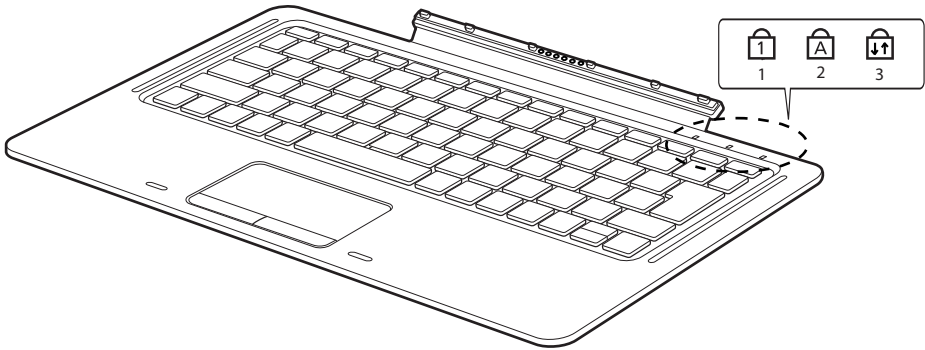
### 7. LAN Port

This Port allows you to connect to a LAN (local area network) using an optional LAN cable.

### 8. A hole for Security wire

### 9. DC Power Jack

## Exterior features: Front view of Docking-Keyboard



(This picture is for illustration purpose only and may look different from the actual unit)

### STATUS INDICATOR Docking-Keyboard LED

#### 1. Num Lock Indicator (🔒)

This indicator lights up when the keyboard is locked in Num Lock mode. (You can use the keyboard as a ten-digit keyboard when the Num Lock mode is turned on).

You can toggle the Num Lock mode by using the [Num Lk] key.

#### 2. Caps Lock Indicator (🔒)

You can toggle the Caps Lock mode by using the [Caps oc] key.

#### 3. Scroll Lock Indicator (🔒)

You can toggle the Scroll Lock mode by using the [Caps oc] key.

## RUNNING THE Tablet PC ON ITS BATTERY

### Recharging the battery

#### 1. Connect the AC adapter to your notebook.

The moment you connect an AC adapter to your notebook, the notebook begins to charge the internal standard battery pack.

#### 2. When the battery level indicator turns off after the battery is completely charged, (while the notebook is in off mode) disconnect the AC adapter from the notebook.

#### POINT

- Before using the supplied battery pack for the very first time after purchase, remember to charge it fully. If a charged battery has not been recharged for more than a month, charge it fully before using it.
- When the battery is fully charged while the notebook is in power off mode, the Battery Level LED indicator turns off.

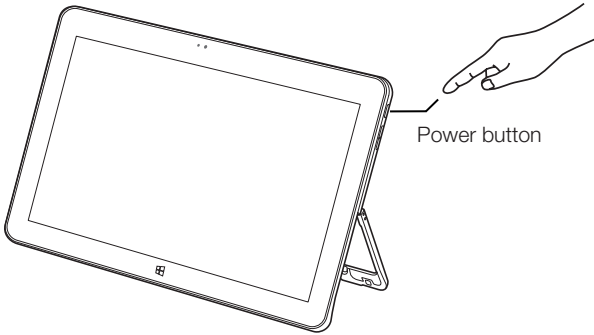
#### POINT

- When the battery is 90% or more charged, it cannot be recharged even if the AC adapter is connected. The battery can be recharged when its power level (i.e. remaining battery life) is 89% or less.
- When a notebook is turned off, the Battery Level LED indicator goes off immediately if the battery is completely charged.
- The chargeability of the battery degrades when it is used in an extremely hot or cold place.
- When the battery is very hot, for example, immediately after long usage of the notebook, the battery protection feature may be activated to prevent the battery from being recharged. When the temperature decreases, the notebook automatically begins to charge the battery.
- When an optional modular bay battery is installed, it is charged along with the internal standard battery. (Optional modular bay battery is applicable to selected models only.)

## Running the Tablet PC on its battery

This section describes the steps to run the notebook on its internal standard battery.

1. Disconnect the AC adapter from your notebook and press the power button.



This picture is for illustration purpose only and may look different from the actual unit)

## Checking the power level of the battery

### ■ Checking the power level of the battery

#### POINT

- When the power is turned off, the status display LEDs are all OFF except for during battery charging.

#### 1. Built-in Battery Pack Charging Lamp ( )

This lamp indicates charging status of builtin battery when AC adaptor is connected to PC.

- Blue lamp is lit  
Charging completed.
- Amber lamp is lit  
Charging
- Blue and Amber lamp flashes  
Charging stopped (due to battery temperature alarm, etc. [Note 1])
- OFF  
No charging due to disconnected AC adaptor.

#### POINT

- The power level of the battery decreases faster when it is used in a cold place.
- The chargeability of the battery decreases after it has been used over a long period of time. If the battery runs down very fast, replace it with a new battery.

 **POINT**

- The use of a weak battery may result in lost of data you are currently working on. When the battery runs low, connect the AC adapter to your notebook as soon as an external power source is available or immediately save the data you are working on, exit all applications and turn off the notebook.
- Accessing data on the hard disk consumes a lot of power. Therefore when the battery is weak, connect an AC adapter to the notebook before accessing data on the hard disk.
- If a battery is weak and there is no system activity, the notebook may go into standby (i.e. suspend) mode. However, if there is system activity, the notebook will go into standby mode only after the system activity has completed its processing.
- The notebook will go into standby mode when the indicator reaches 3%. This is the default setting of the notebook.

**NOTE 1:**

Battery temperature alarm is to stop charging with battery protection function when temperature of built-in battery pack or extended built-in battery unit becomes too high or too low due to battery heat or cooling down of the battery.

## POWER MANAGEMENT

Your Fujitsu LifeBook notebook has many options and features for conserving battery power. Some of these features are automatic and need no user intervention, such as those for the internal modem. However, others depend on the parameters you set to best suit your operating conditions, such as those for the display brightness. Internal power management for your notebook may be controlled from settings made in your operating system, pre-bundled power management application, or from settings made in BIOS setup utility.

Besides the options available for conserving battery power, there are also some things that you can do to prevent your battery from running down as quickly. For example, you can create an appropriate power saving profile, put your notebook into Suspend mode when it is not performing an operation, and you can limit the use of high power devices. As with all mobile, battery powered computers, there is a trade-off between performance and power savings.

### Power/Suspend/Resume Button

When your LifeBook notebook is active, the Power/Suspend/Resume button can be used to manually put your notebook into Suspend mode. Push the Power/Suspend/Resume button when your notebook is active, but not actively accessing anything, and immediately release the button. You will hear two short beeps\* and your system will enter Suspend mode.

If your LifeBook is suspended, pushing the Power/Suspend/Resume button returns your notebook to active operation. You can tell whether the system is Suspended by looking at the Power indicator. If the indicator is visible and not flashing, your notebook is fully operational. If the indicator is visible and flashing, your notebook is in Suspend mode. If the indicator is not visible, the power is off or your notebook is in Hibernation mode. (See Hibernation Feature)

\* Only applicable for some models

## Suspend Mode

Suspend or Standby mode in Windows saves the contents of your LifeBook notebook's system memory during periods of inactivity by maintaining power to critical parts. This mode will turn off the CPU, the display, the hard drive, and all of the other internal components except those necessary to maintain system memory and allow for restarting. Your notebook can be put in Suspend mode by:

- Pressing the Power/Suspend/Resume button when your system is turned on.
- Selecting Standby from the Windows Shut Down menu.
- Timing out from lack of activity.
- Allowing the battery to reach the Dead Battery Warning condition.

Your notebook's system memory typically stores the file on which you are working, open application information, and any other data required to support operations in progress. When you resume operation from Suspend mode, your notebook will return to the point where it left off. You must use the Power/Suspend/Resume button to resume operation, and there must be an adequate power source available, or your notebook will not resume.

 **POINT**

- If you are running your LifeBook notebook on battery power, be aware that the battery continues to discharge while your notebook is in Suspend mode, though not as fast as when fully operational. Disabling the Power/Suspend/Resume button prevents it from being used to put your LifeBook notebook in Suspend or Hibernation (Save-to-Disk) mode. The resume function of the button cannot be disabled. The Suspend or Hibernation (Save-to-Disk) mode should not be used with certain PC Cards. Check your PC Card documentation for more information. When PC Cards or external devices are in use, Hibernation (Save-to-Disk) mode cannot return to the exact state prior to suspension, because all of the peripheral devices will be re-initialized when the system restarts. If your LifeBook notebook is actively
- accessing information when you enter the Suspend or Hibernation (Save-to-Disk) mode, changes to open files are not lost. The files are left open and memory is kept active during Suspend mode or the memory is transferred to the internal hard drive during Hibernation mode. The main advantage of using the Hibernation (Save-to-Disk) function is
- that power is not required to maintain your data. This is particularly important if you will be leaving your LifeBook notebook in a suspended state for a prolonged period of time. The drawback of using Hibernation mode is that it lengthens the power down and power up sequences and resets peripheral devices.

## Hibernation (Save-To-Disk) Feature

The Hibernation feature saves the contents of your LifeBook notebook's system memory to the hard drive as a part of the Suspend/Resume mode. You can enable or disable this feature.

### Enable or Disable the Hibernation Feature

1. Visit **Control Panel**.
2. Select "**System and Security**" and then select "**Power Options**".
3. Select "Choose what the power button does" and click "Change settings that are currently unavailable".
4. Under "Shutdown settings", Select the Hibernate tab. Select the box to enable or disable this feature and click "Save changes" to apply.

## Windows Power Management

The Power Options icon located in the Windows Control Panel allows you to configure some of the power management settings. For example, you can use the Power Options to set the timeout values for turning off the display and hard disks whether you are running the notebook on battery power or one of the adapters.

### Restarting The System

If your system is on and you need to restart it, be sure that you use the following procedure.

#### Windows 10

If your system is on and you need to restart it, be sure that you use the following procedure.

1. Click the **Start** button, and then move the mouse over the right arrow.
2. Select the desired action from the list.

#### Windows 8

1. Swipe in from the right edge of the screen, and then tap Settings. (If you're using a mouse, point to the upper-right corner of the screen, move the mouse pointer down, and then click Settings.)
2. Click Power, and select Restart from the list.

### IMPORTANT

When the power is turned off, the status display LEDs are all OFF except for during battery charging.

## Power Off

Before turning off the power, check that the hard drive/ optical drive access indicator is off. If you turn off the power while accessing a disk there is a risk of data loss. To ensure that your notebook shuts down without error, use the Windows shut down procedure.



### CAUTION

Be sure to close all files, exit all applications, and shut down your operating system prior to turning off the power. If files are open when you turn the power off, you will lose any changes that have not been saved, and may cause disk errors.

Using the correct procedure to shut down from Windows allows your notebook to complete its operations and turn off power in the proper sequence to avoid errors. The proper sequence

#### Windows 10

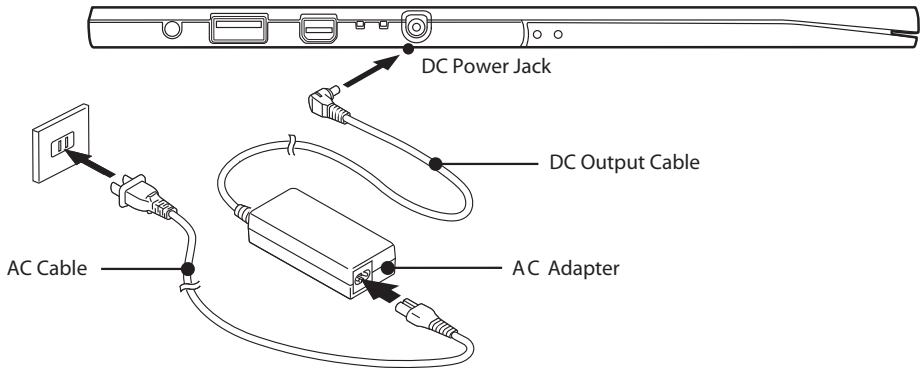
1. Click the **Start** button, and then click **Shut Down**.
2. Select the **Shut Down** option from within the Windows Shut Down dialog box.
3. Click **OK** to shut down your notebook.

#### Windows 8

1. Swipe in from the right edge of the screen, and then tap **Settings**.
2. Click **Power**, and select **Shut down** from the list.

If you are going to store your notebook for a month or more see Care and Maintenance Section.





(This picture is for illustration purpose only and may look different from the actual unit)

## POWER SOURCES

### Connecting the Power Adapter

The AC adapter provides power for operating your notebook and charging the batteries.

#### Connecting the AC Adapter

1. Plug the DC output cable into the DC power jack on your notebook.
2. Plug the AC adapter into an AC electrical outlet.

#### POINT

The Li-ion battery is not charged at the point of purchase. Remember to connect an AC adapter to your notebook to charge it when you use it for the first time.

## Power On

### Power/Suspend/Resume button

You can use the Power/Suspend/Resume button to turn on your notebook. Once you have connected an AC adapter to the notebook or charged the internal Lithium ion battery, you can power on your notebook.



### POINT

When you turn on your notebook, be sure you have a power source connected to it. This means that at least one battery is installed and charged or that the AC adapter is connected and has power.

You can press the Power/Suspend/Resume button to turn off the notebook. After you have finished working on the notebook, you can either leave it in Standby (i.e. suspend) mode or turn it off.



### CAUTION

Do not carry the notebook around when it is still power on. Do not subject the notebook to shocks and vibrations. Failure to do so may damage the notebook.

When you power on your notebook, it will perform a Power On Self Test (POST) to check the internal parts and configuration for normal functionality. If an error is found, your notebook will emit an audio warning and/or show an error message.

After satisfactory completion of the Power On Self Test (POST), your notebook will load your operating system.

## Power Off

Before turning off the power, check that the Hard Disk Drive Access and Optical Disk Drive Access indicators are off. If you power off the notebook when it is accessing the disk drives, data may be lost or corrupted. To power off the notebook, always shut down the notebook properly using the Windows shutdown procedure.



### CAUTION

Remember to close all files, exit all applications and shut down the operating system prior to turning off the power using the power button. If documents are opened when the notebook is turned off, data may be lost and this may result in disk errors.

Remember to use the correct procedure to shut down the notebook. The proper procedure is:

### Windows 10

1. Click the **Start** button, and then click **Shut Down**.
2. Select the **Shut Down** option from within the Windows Shut Down dialog box.
3. Click **OK** to shut down your notebook.

### Windows 8

1. Swipe in from the right edge of the screen, and then tap **Settings**.
2. Click **Power**, and select **Shut down** from the list.

## GETTING TO START DVD SHARING APPLICATION

To enjoy this feature, you should have 2 PC (Host PC and Client PC) on hand.

- “Host PC”, it refers to a PC which shares information in CD/DVD drive.
- “Client PC”, it refers to a PC which access shared CD/DVD drive through a network.

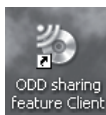
### Not supported by DVD Sharing Application

- Play music CDs or movie DVDs which saved in shared drive on Host PC.
- Overwrite in shared drive on Host PC.

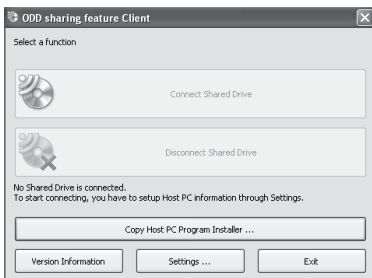
### For user's PC share the same Internet Network:

Steps to install “ODD sharing feature Client”, those steps must be carried out on Client PC:

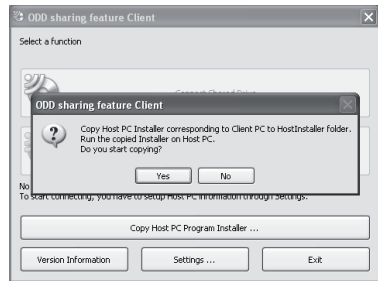
1. Click “ODD sharing feature Client” icon on Desktop, then menu screen appears.



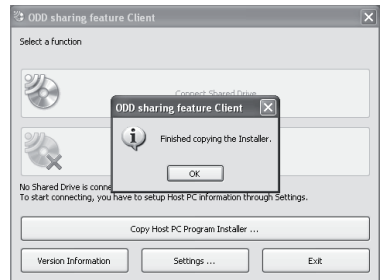
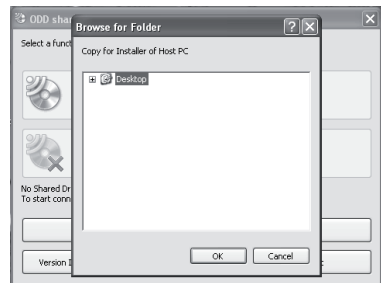
2. On the menu screen, to set up connection with “Host PC”, you have to click “Copy Host PC Program Installer” button.



3. Click “Yes” to start copying.



4. Select the location to save the “HostInstaller”, and follow the instructions to proceed.



5. Below folder “HostInstaller” appears on selected location. Copy the folder, and transfer it to the Host PC through USB storage disk etc.



## Steps to install “ODD sharing feature Host”, those steps must be carried out on Host PC:

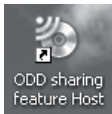
1. Open the folder HostInstaller copied from Client PC.



2. Click “Setup” to start the installation on Host PC and follow the instructions on the screen.



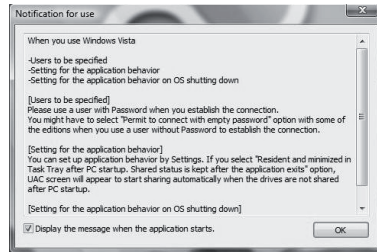
3. After installation, click “ODD sharing feature Host” icon on Desktop.



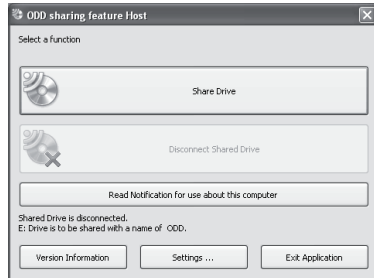
4. To share Drives, you have to click “Yes” to change the Firewall setting and make the security level lower, this may make your PC more vulnerable to viruses and intruders. Fujitsu is not liable for any data and personal loss as a result of this change.



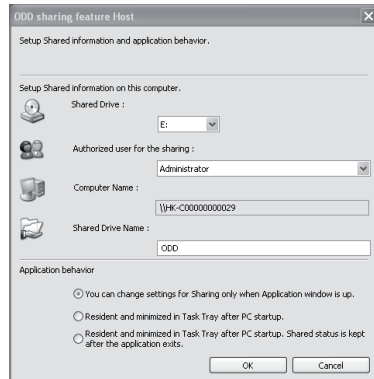
5. Menu screen appears, click the icon, “Notification for use” pop-up menu appears, then click “OK” to continue.



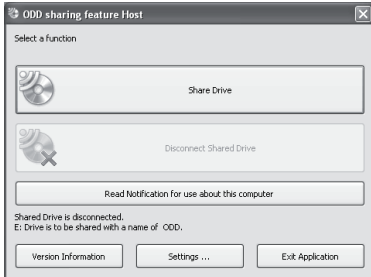
6. On the menu, click “Settings”.



7. Choose “Share Drive” and “Authorized user for the sharing”, type in “Sharing Drive Name”, e.g. “ODD”. You can also select the desired “Application Behavior”. After that, click “OK” and back to “ODD sharing feature Host” menu.

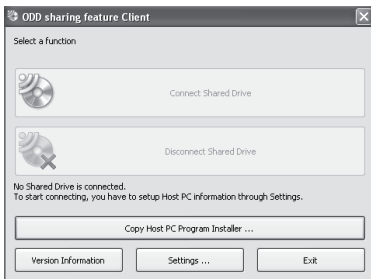
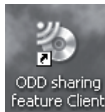


- Click "Share Drive" button. "User Account Control Menu" appears. Click "Continue" to proceed.

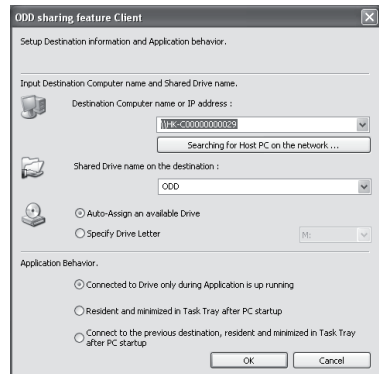
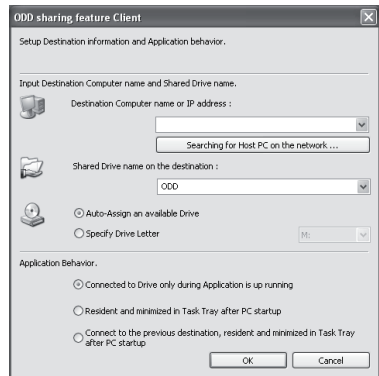


## Access shared CD/DVD Drive from Client PC to Host PC, below steps must be carried out on Client PC.

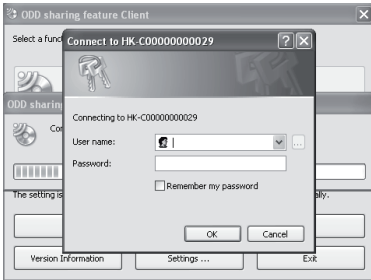
- Click "ODD sharing feature Client" icon, and set up window appears.



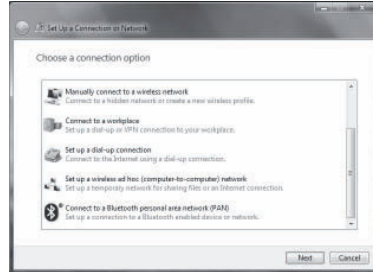
- Click "Settings" button, then click "Searching for Host PC on the network" to auto search Host PC on the network and type in "Shared Drive name on the destination" which appears on setting screen of "ODD sharing feature Client". After select the desired Application Behavior, Click "OK" to confirm.



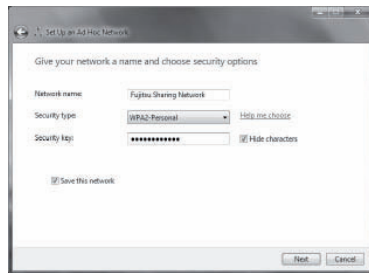
3. Enter "User Name" and "Password" of Host PC user, then click "OK" to connect Host and Client PC. Client PC user can access Host PC CD/DVD Drive now.



2. Choose "Set up a wireless ad hoc (computer-to-computer) network", then click "Next".



3. Please fill in the "Network name" and "Security key", click "Next" to proceed.



**For user's PC cannot access Internet Network/location or at places without wireless network connected, user can establish ODD sharing network by set up a wireless ad hoc network, please ensure you have switched on the wireless LAN function of both Client and Host PC.**

Below steps must be carried out on Host PC:

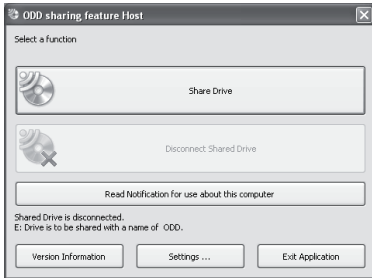
1. Go to "Control Panel" → "Network and Internet" → "Network and Sharing Center", then choose "Set up a new connection or network".



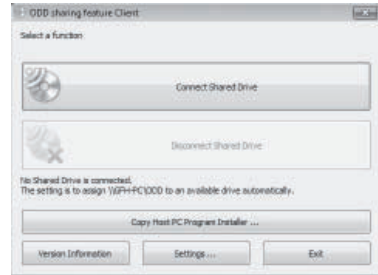
4. Click the network status icon in Windows Tool Bar to review network status, you should find the network created by you and reveal "Waiting for users".




5. Run “ODD sharing feature Host” and click “Share Drive” button in the menu.



3. Run “ODD sharing feature Client”, and click “Settings”.

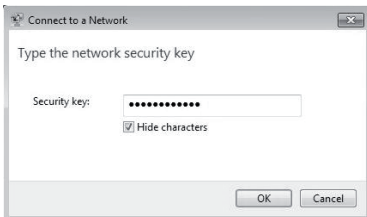


**Below steps must be carried out on Client PC:**

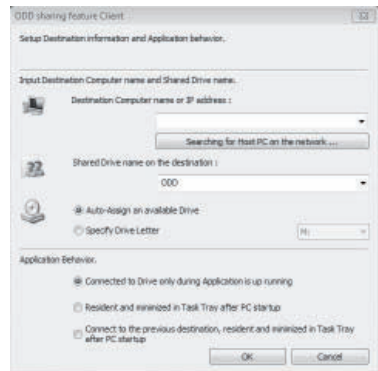
1. Click the  in Windows Tool Bar to review all available network, user should find the network created by Host PC, then click “Connect” button.



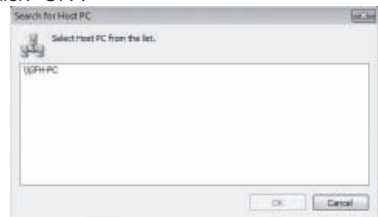
2. Type in the “Security key” preset in Host PC and click “OK” to establish connection.



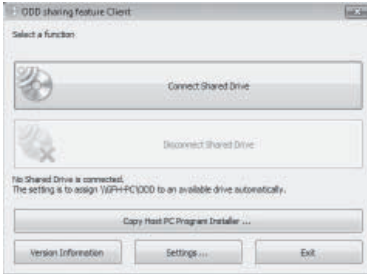
4. Click “Searching for Host PC on the network”.



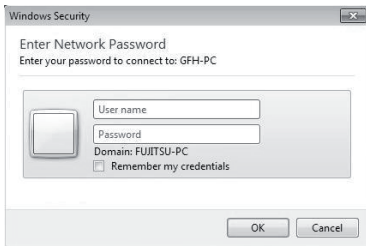
5. Select name of the Host PC from the list and click “OK”.



6. Go back to the menu, click "Connect Shared Drive".



7. Fill in the "User name" and "Password" of the Host PC, click "OK". Now, Client PC user can share the ODD drive of the Host PC.





## TROUBLESHOOTING

Your Fujitsu LifeBook notebook is sturdy and undergoes stringent reliability tests. However, you may encounter simple setup or operating problems that you can solve on the spot or problems with peripheral devices, that you can solve by replacing the device. The information in this section helps you isolate and resolve some of these straightforward problems and identify failures that require service.

### Identifying the Problem

If you encounter a problem, go through the following procedure before pursuing complex troubleshooting:

1. Turn off your LifeBook notebook.
2. Make sure the AC adapter is plugged into your notebook and to an active AC power source.
3. Make sure that any card installed in the PC Card slot is seated properly. You can also remove the card from the slot, thus eliminating it as a possible cause of failure.
4. Make sure that any devices connected to the external connectors are plugged in properly. You can also disconnect such devices, thus eliminating them as possible causes of failure.
5. Turn on your notebook. Make sure it has been off at least 10 seconds before you turn it back on.
6. Go through the boot sequence.
7. If the problem has not been resolved, refer to the Troubleshooting Table that follows for more detailed troubleshooting information.

8. If you have tried the solutions suggested in the Troubleshooting Table without success, contact your support representative.

Before you place the call, you should have the following information ready so that the customer support representative can provide you with the fastest possible solution:

- Product name
- Product configuration number
- Product serial number
- Purchase date
- Conditions under which the problem occurred
- Any error messages that have occurred
- Hardware configuration
- Type of device connected, if any

See the Configuration Label on the bottom of your notebook for configuration and serial numbers.

## Specific Problems

### Using the Troubleshooting Table

When you have problems with your LifeBook notebook, try to find the symptoms under the Problem column of the troubleshooting table. You will find a description of common causes for that symptom under the column Possible Cause. Follow the instructions on the Possible Solution column to resolve the problem. All possible causes or solutions may not apply to your notebook.

### POINT

If you keep notes about what you have tried, your support representative may be able to help you more quickly by giving additional suggestions over the phone.

## Troubleshooting Table

Problem	Possible Cause	Possible Solution
<b>Audio Problem</b>		
There is no sound coming from the built-in speakers.	The software volume control is set too low.	Adjust the sound volume control settings in your software, operating system and applications.
	Headphones are plugged into your notebook.	Plugging in headphones disables the built-in speakers, remove the headphones.
	BIOS audio settings are incorrect.	Set the BIOS setup utility to the default values within the Multimedia Device Configuration menu.
	Software driver is not configured correctly.	Refer to your application and operating system documentation for help.
	The speakers have been muted using the Volume icon in the system tray.	Click on the Volume icon in the tool tray on the bottom right of the screen. (It looks like a speaker). If the Mute box is checked, click on it to uncheck it.
<b>DVD/CD-RW/CD-ROM Drive Problems</b>		
LifeBook notebook fails to recognize DVD/CD-RW/CDROM's.  (continued)	Protective sheet is still in the DVD/CD-RW/CD-ROM drive tray.	Remove the protective sheet from the DVD/CD-RW/CDROM drive tray.
	DVD/CD-RW/CD-ROM is not pushed down onto raised center circle of the drive.	Open DVD/CD-RW/CD-ROM tray and reinstall DVD/CD-RW/CD-ROM properly.
	DVD/CD-RW/CD-ROM tray is not latched shut.	Push on the front of the DVD/CD-RW/CDROM tray until it latches.
	Incorrect DVD Player or no DVD Player software is installed.	Install DVD Player software.

Problem	Possible Cause	Possible Solution
<b>DVD/CD-RW/CD-ROM Drive Problems</b>		
LifeBook notebook fails to recognize DVD/CD-RW/CDROM's.	Wrong drive designator was used for DVD/CDRW/CD-ROM in the application.	Verify the drive designator used by the application is the same as the one used by the operating system. When the operating system is booted from a DVD/ CD, drive designations are automatically adjusted.
	Windows DVD/CD-RW/CD-ROM auto insertion function is disabled.	Start the DVD/CD-RW/CD-ROM from the desktop or application software or re-enable the Windows DVD/CD-RW/CD-ROM auto insertion function.
	DVD/CD-RW/CD-ROM is dirty or defective.	Wipe DVD/CD-RW/CD-ROM with a nonabrasive CD cleaning cloth and reinsert. If it still does not work, replace a new DVD/CDRW/CD-ROM in the drive.
The DVD/CD-RW/CD-ROM Access indicator on the Status Indicator Panel blinks at regular intervals when no DVD/CD-RW/CD-ROM is in the tray or the optical drive is not installed.	The Windows DVD/CD-RW/CD-ROM auto insertion function is active and is checking to see if a DVD/CD-RW/CD-ROM is ready to run.	This is normal. However, you may disable this feature.

Problem	Possible Cause	Possible Solution
<b>Floppy Disk Drive Problems</b>		
You cannot access your floppy disk.	You tried to write to a write protected floppy disk.	Eject the floppy disk and set it to write enable.
	Floppy disk is not loaded correctly.	Eject floppy disk, check orientation and reinsert.
	The floppy disk drive may not be properly installed.	Remove and re-install your floppy disk drive.
	Security is set to protect access to floppy disk data.	Verify your password and security settings.
<b>Hard Drive Problems</b>		
You cannot access your hard drive.	The setup utility is incorrectly set for your internal (Primary Master) or optional second hard drive (Primary Slave).	Revise BIOS settings to set both Primary Master and Primary Slave correctly.
	The wrong drive designator was used by an application when a bootable CD-ROM was used to start the notebook.	Verify drive designator used by application is in use by the operating system. When the operating system is booted from a CD, drive designations are automatically adjusted.
	Security is set so your operating system cannot be started without a password.	Verify your password and security settings.
<b>Keyboard or Mouse Problems</b>		
The built-in keyboard does not seem to work.	The notebook has gone into Suspend mode.	Push the Power/Suspend/Resume button.
	Your application has locked out your keyboard.	Try to use your integrated pointing device to restart your system.

Problem	Possible Cause	Possible Solution
<b>Keyboard or Mouse Problems</b>		
You have installed an external keyboard or mouse, and it does not seem to work.	Your external device is not properly installed.	Re-install your device.
	Your operating system software is not setup with the correct software driver for that device.	Check your device and operating system documentation and activate the proper driver.
	Your mouse or keyboard is connected to the wrong PS/2 port on the optional Port Replicator.	Plug the mouse into the PS/2 Mouse port and the external keyboard or numeric key pad into the PS/2 Keyboard port.
You have connected an external keyboard or a mouse and it seems to be locking up the system.	Your operating system software is not setup with the correct software driver for that device.	Check your device and operating system documentation and activate the proper driver.
	Your system has crashed.	Try to restart your notebook.
<b>Memory Problems</b>		
Your Power On screen, or Main menu of the BIOS setup utility information, does not show the correct amount of installed memory.	Your memory upgrade module is not properly installed.	Remove and re-install your memory upgrade module.
	You have a memory failure.	Check for Power On Self Test (POST) messages.
<b>Modem Problems</b>		
Messages about modem operation.	Messages about modem operation are generated by whichever modem application is in use.	See your application software documentation for additional information.

Problem	Possible Cause	Possible Solution
<b>PC Card Problems</b>		
A card inserted in the PC Card slot does not work or is locking up the system.	The card is not properly installed.	Remove and re-install the card.
	The card may have been installed while an application was running, so your notebook is not aware of its installation.	Close the application and restart your notebook.
	Your software may not have the correct software driver active.	See your software documentation and activate the correct driver.
	You may have the wrong I/O address selected for the activated PC Card.	See your PC Card documentation to determine the required I/O address. Change the settings in the BIOS.
	Your PC Card device and another device are assigned the same I/O address.	Check all I/O addresses located within the BIOS setup utility and any other installed hardware or software to make sure there are no duplications.
<b>Power Failures</b>		
You turn on your LifeBook notebook and nothing seems to happen. (continued)	The installed primary battery is completely discharged, there is no optional second battery installed or there is no Power adapter (AC adapter) installed.	Check the Status Indicator Panel to determine the presence and condition of the batteries. Install a charged battery or a Power adapter.
	The primary battery is installed but is faulty.	Use the Status Indicator panel to verify the presence and condition of the batteries. If a battery is indicating a short, remove that battery and operate from another power source or replace that battery.
	The battery or batteries are low.	Check the Status Indicator Panel to determine the presence and condition of the batteries. Use a Power adapter to operate until a battery is charged or install a charged battery.
	The power adapter (AC adapter) is not plugged in properly.	Verify that your adapter is connected correctly.

Problem	Possible Cause	Possible Solution
<b>Power Failures</b>		
You turn on your LifeBook notebook and nothing seems to happen.	The power adapter (AC adapter) has no power from the AC outlet.	Move the AC cord to a different outlet, check for a line switch or tripped circuit breaker for the AC outlet.
	The power adapter (AC adapter) is faulty.	Try a different power adapter or install a charged optional second battery.
Your LifeBook notebook turns off all by itself.	The power management parameters are set for auto timeouts which are too short for your operating needs.	Press any button on the keyboard, or move the mouse to restore operation. If that fails, push the Power/Suspend/Resume button. Check your power management settings, or close your applications and go to the Power Options menu to adjust the timeout values to better suit your needs.
	You are operating on battery power only and have ignored a low battery alarm until the batteries are all power drained empty and your machine has gone into Dead Battery Suspend mode.	Install a power adapter or a charged battery and then push the Power/Suspend/Resume button.
	You have a battery failure.	Verify the condition of the batteries using the Status Indicator Panel, and replace or remove battery that is shorted
	Your power adapter has failed or lost its power source.	Make sure the adapter is plugged in and the outlet has power.

Problem	Possible Cause	Possible Solution
<b>Power Failures</b>		
Your LifeBook notebook will not work on battery alone.	The installed batteries are dead.	Replace the battery with a charged one or install a Power adapter.
	No batteries are installed.	Install a charged battery.
	The batteries are improperly installed.	Verify that the batteries are properly connected by re-installing them.
	Your installed batteries are faulty.	Verify the condition of the batteries using the Status Indicator panel and replace or remove any batteries that are shorted.
The batteries seem to discharge too quickly.	You are running an application that uses a great deal of power due to frequent hard drive access or DVD/CD-ROM access, use of a modem card or a LAN PC card.	Use both the primary battery and an optional second battery and/or use a power adapter for this application when at all possible.
	The power savings features may be disabled.	Check the power management and/or setup utility settings in the Power Savings menu and adjust according to your operating needs.
	The brightness is turned all the way up.	Turn down the brightness adjustment. The higher the brightness the more power your display uses.
	The batteries are very old.	Replace the batteries.
	The batteries have been exposed to high temperatures.	Replace the batteries.
	The batteries are too hot or too cold.	Restore the notebook to normal operating temperature. The Charging icon on the Status Indicator panel will flash when the battery is outside its operating range.



Problem	Possible Cause	Possible Solution
<b>Shutdown and Startup Problems</b>		
The Suspend/Resume button does not work.	The Suspend/Resume button is disabled from the Advanced submenu of the Power menu of the setup utility.	Enable the button from the setup utility.
	You did not hold the button in long enough.	Hold the button longer. This may need to be a few seconds if your application is preventing the CPU from checking for button pushes.
	There may be a conflict with the application software.	Close all applications and try the button again.
The system powers up, and displays power on information, but fails to load the operating system.	The boot sequence settings of the setup utility are not compatible with your configuration.	Set the operating source by pressing the [ESC] key while the Fujitsu logo is on screen or use the [F2] key and enter the setup utility and adjust the source settings from the Boot menu.
	You have a secured system requiring a password to load your operating system.	Make sure you have the right password. Enter the setup utility and verify the Security settings and modify them as accordingly.
	Internal hard drive was not detected.	Use the BIOS setup utility or Primary Master submenu, located within the Main menu, to try to auto detect the internal hard drive.
An error message is displayed on the screen during the notebook (boot) sequence.	Power On Self Test (POST) has detected a problem.	See the Power On Self Test (POST) messages to determine the meaning and severity of the problem. Not all messages are errors; some are simply status indicators.

Problem	Possible Cause	Possible Solution
<b>Shutdown and Startup Problems</b>		
Your notebook appears to change setup parameters when you start it.	BIOS setup changes were not saved when you made them and exited the BIOS setup utility returning it to previous settings.	Make sure you select Save Changes And Exit when exiting the BIOS setup utility.
	The BIOS CMOS hold-up battery has failed.	Contact your support representative for repairs. This is not a user serviceable part but has a normal life of 3 to 5 years.
Your system display won't turn on when the system is turned on or when the system has resumed.	The system may be password-protected.	Check the status indicator panel to verify that the Security icon is blinking. If it is blinking, enter your password.
<b>Video Problems</b>		
The built-in display is blank when you turn on your LifeBook notebook.  (continued)	Something is pushing on the Closed Cover switch.	Clear the Closed Cover switch.

Problem	Possible Cause	Possible Solution
<b>Video Problems</b>		
<p>The built-in display is blank when you turn on your LifeBook notebook.</p>	<p>The notebook is set for an external monitor only.</p>	<p>Pressing [F10] while holding down the [Fn] key allows you to change your selection of where to send your display video. Each time you press the combination of keys you will step to the next choice. The choices, in order are: built-in display only, external monitor only, both built-in display and external monitor.</p>
	<p>The angle of the display and the brightness settings are not adequate for your lighting conditions.</p>	<p>Move the display and the brightness control until you have adequate visibility.</p>
	<p>The power management time-outs may be set for very short intervals and you failed to notice the display come on and go off again.</p>	<p>Press any button the keyboard, or move the mouse to restore operation. If that fails, push the Power/Suspend/Resume button. (The display may be shut off by Standby mode, Auto Suspend or Video Timeout)</p>
<p>The LifeBook notebook turned on with a series of beeps and your built-in display is blank.</p>	<p>Power On Self Test (POST) has detected a failure which does not allow the display to operate.</p>	<p>Contact your support representative.</p>
<p>The display goes blank by itself after you have been using it.</p>	<p>The notebook has gone into Video Timeout, Standby mode, Suspend mode or Save-to-Disk mode because you have not used it for a period of time.</p>	<p>Press any button on the keyboard, or move the mouse to restore operation. If that fails, push the Power/Suspend/Resume button. Check your power management settings, or close your applications and go to the Power Savings menu of the setup utility to adjust the timeout values to better suit your operation needs.</p>
	<p>The power management time-outs may be set for very short intervals and you failed to notice the display come on and go off again.</p>	<p>Press any button on the keyboard, or move the mouse to restore operation. If that fails, push the Power/Suspend/Resume button. (The display may be shut off by Standby Mode, Auto Suspend or Video Timeout)</p>
	<p>Something is pushing on the Closed Cover switch.</p>	<p>Check the Closed Cover switch.</p>

Problem	Possible Cause	Possible Solution
<b>Video Problems</b>		
The application display uses only a portion of your screen and is surrounded by a dark frame.	You are running an application that does not support 800 x 600/1024 x 768 pixel resolution display and display compression is enabled.	Display compression gives a clearer but smaller display for applications that do not support 800 x 600/1024 x 768 pixel resolution. You can fill the screen but have less resolution by changing your display compression setting, (See the Video Features submenu, located within the Advanced menu of the BIOS.)
The Display is dark when on battery power.	The Power Management utility default is set on low brightness to conserve power.	Press [Fn] + [F7] to increase brightness or double-click on the battery gauge and adjust Power Control under battery settings.
You have connected an external monitor and it does not display any information.	Your BIOS setup is not set to enable your external monitor.	Try toggling the video destination by pressing [Fn] and [F10] together, or check your BIOS setup and enable your external monitor. (See the Video Features submenu, located within the Advanced Menu of the BIOS.)
	Your external monitor is not properly installed.	Reinstall your device.
	Your operating system software is not setup with the correct software driver for that device.	Check your device and operating system documentation and activate the proper driver.
You have connected an external monitor and it does not come on.	Your external monitor is not compatible with your LifeBook notebook.	See your monitor documentation and the External Monitor Support portions of the Specifications section.
<b>Miscellaneous Problems</b>		
An error message is displayed on the screen during the operation of an application.	Application software often has its own set of error message displays.	See your application manual and help display screens for more information. Not all messages are errors. Some may simply be status messages.

## データ通信端末の比吸収率(SAR)

この機種 ARROWS TabLIFEBOOK R726/Mは、国が定めた電波の人体吸収に関する技術基準および電波防護の国際ガイドラインに適合しています。

このデータ通信端末は、国が定めた電波の人体吸収に関する技術基準<sup>\*1</sup>ならびに、これと同等な国際ガイドラインが推奨する電波防護の許容値を遵守するよう設計されています。この国際ガイドラインは世界保健機関(WHO)と協力関係にある国際非電離放射線防護委員会(ICNIRP)が定めたものであり、その許容値は使用者の年齢や健康状況に関係なく十分な安全率を含んでいます。

国の技術基準および国際ガイドラインは電波防護の許容値を人体に吸収される電波の平均エネルギー量を表す比吸収率(SAR: Specific Absorption Rate)で定めており、本データ通信端末に対するSARの許容値は2.0W/kgです。取扱説明書に記述する通常使用の場合、このデータ通信端末のSARの最大値0.701W/kg<sup>\*\*2</sup>です。個々の製品によってSARに多少の差異が生じることもありますが、いずれも許容値を満足しています。

データ通信端末は、携帯電話など基地局との通信に必要な最低限の送信電力になるよう設計されているため、実際に通信している状態では、通常SARはより小さい値となります。一般的には、基地局からの距離が近いほど、データ通信端末の出力は小さくなります。

通信中は、身体から1.5センチ以上離し、かつその間に金属(部分)が含まれないようにしてください。このことにより、本データ通信端末が国の技術基準および電波防護の国際ガイドラインに適合していることを確認しています。

世界保健機関は、『携帯電話が潜在的な健康リスクをもたらすかどうかを評価するために、これまで20年以上にわたって多数の研究が行われてきました。今日まで、携帯電話使用によって生じるとされる、いかなる健康影響も確立されていません。』と表明しています。

さらに詳しい情報をお知りになりたい場合には世界保健機関のホームページをご参照ください。

[http://www.who.int/docstore/peh-emf/publications/facts\\_press/fact\\_japanese.htm](http://www.who.int/docstore/peh-emf/publications/facts_press/fact_japanese.htm)

SARについて、さらに詳しい情報をお知りになりたい方は、次のホームページをご参照ください。

総務省のホームページ <http://www.tele.soumu.go.jp/j/sys/ele/index.htm>

一般社団法人電波産業会のホームページ <http://www.arib-emf.org/index02.html>

※1技術基準については、電波法関連省令(無線設備規則第14条の2)で規定されています。

※2 Xi/FOMAと同時に使用可能な無線機能を含みます。

「FOMA」「Xi」はNTTドコモの商標または登録商標です。  
その他の各製品名は、各社の商標、または登録商標です。  
その他の各製品は、各社の著作物です。

Copyright FUJITSU LIMITED 20165

